

# CORNER FILE TRACKING

H:\Survey\Corners\Misc\Filetrac.doc

11/23/98

**CORNER NUMBER**

**105847020**

<b>STEP</b>	<b>HISTORY()</b>	<b>RESTORATION()</b>
<b>Form Prepared, DB</b>	6/14/99	6/14/99
<b>Field Inspection, DB</b>	—	—
<b>Form Checked, DB</b>	6/29/99	6/29/99
<b>Form Edited, DB</b>	7/2/99	7/2/99
<b>Form Signed, DB</b>	—	7/2/99
<b>Authorize Payment, DB</b>	—	—
<b>Archive Digital Files</b>	7/8/99	7/8/99
<b>Collect Documents</b>	7/15/99	7/15/99
<b>Scanned</b>		
<b>Copy For Filming</b>		
<b>Filed, DB</b>		
<b>Finish index (count unit)</b>		
<b>Filmed (Archived), DB</b>		

(DB) = Entry needed in database (Access).

## COMMENTS:

6/14/99 THIS NEEDS A HISTORY & REST.

CORNER HISTORY		T 10 S, R 5 W		SECTION 34 D.L.C. ALFRED WRIGHTSMAN NO. 47		CORNER CORNER E-SE		# 847020
NO.	DATE	SOURCE	SURVEYOR	MONUMENTS AND ACCESSORIES		COMMENTS		
1	9/13/1956	ORIG. GLO	DENNIS HATHORN	SET STONE POST S 1/4 25 0 2 0 2 0 2 0		MEAS. BT. TO FACE		1
2	7/4/70	CS# 137885	J. A. GANDONG	ORIGINAL STONE		FR 7/17 #25		2 3
3	NONE GIVEN	CS# 33 WAF				BOOK OF PLATS #3 PG. 84		4 5
4								6 7
5		MAP NO. 10-5-00010	BENTON COUNTY					8 9
6	8/21/1947	CS# 9218	HARVEY CHRISTENSEN	FND. FORD. STONE + 1 BT NEAR FENCE				10 11
								12 13 14 15 16 17 18 19 20 21 22 23 24 25 26 27 28 29 30 31

**DATE 05/27/1999**

**TOWNSHIP 10 SOUTH, RANGE 5 WEST, WILLAMETTE MERIDIAN; SECTION 34 CORNER**  
**DONATION LAND CLAIM ALFRED WRITSMAN NO. 47 CORNER EAST-SOUTHEAST**

**COMMON CORNER(S):**

NONE

**CORNER RECORDS (PREVIOUS RENEWALS, SURVEYS, ETC.)**

- [01] ORIGINAL GLO SURVEY BY DENNIS HATHORN, D.S., DATED SEPTEMBER 16, 1856. *SET STONE POST 8"x8"x15" WITH 2 OAK BEARING TREES.*
- [02] COUNTY SURVEY NO. 189 FIELD NOTES (FIELD BOOK 7, PAGE 17, #25) BY J. A. GANONG, D.C.S., DATED OCTOBER 24, 1910. *ORIGINAL STONE.*
- [03] COUNTY SURVEY NO. 189 MAP BY J. A. GANONG, D.C.S., NO DATE GIVEN. *ORIGINAL STONE.*
- [04] COUNTY SURVEY NO. 189 (SECOND COPY) MAP BY J. A. GANONG, D.C.S., NO DATE GIVEN. *ORIGINAL STONE WITH 2 OAK BEARING TREES.*
- [05] MAP NO. 10-5-00010 BY BENTON COUNTY, NO DATE GIVEN. *ORIGINAL STONE WITH 2 OAK BEARING TREES.*
- [06] COUNTY SURVEY NO. 9218 BY HARVEY CHRISTENSEN, P.L.S., DATED JUNE 21, 1997.

**COMMENTS/LOCATION/ETC:**

**HORIZONTAL AND VERTICAL INFORMATION:**

**HORIZONTAL DATUM:**

LATITUDE:  
LONGITUDE:

**VERTICAL DATUM:**

ELLIPSOID ELEVATION:  
ORTHOMETRIC ELEVATION:  
GEOID SEPERATION:

**STATE PLANE COORDINATE SYSTEM:**

N (Y):  
E (X):

SCALE FACTOR  
COMBINED FACTOR:  
CONVERGENCE:

**NOTES:**

THIS IS A MICROSOFT WORD 97 DOCUMENT NAMED "05847020" CREATED FROM A BOILER PLATE DOCUMENT NAMED "HISTORY", WHICH HAS A STYLESHEET NAMED "CORNER" ATTACHED TO IT. INFORMATION IN ***BOLD ITALICS*** IS COUNTY STAFFS' INTERPRETATION OF THE RECORD.

**FIRM/AGENCY:** BENTON COUNTY SURVEYOR'S OFFICE  
**ADDRESS:** 360 S.W. AVERY AVE. CORVALLIS OR 97333; PH. 757-6821  
**RESEARCH BY:** CURTIS J. LIESENFELT, P.L.S.  
**DATA ENTRY BY:** DAVID M. DEAN, P.L.S.

**SEE CORNER HISTORY FORM FOR RECORDS ETC.**

**CORNER RESTORATION FIELD BOOK NUMBER** 17 PAGE(S) 33 **DATE** 05/27/1999  
**TOWNSHIP** 10 SOUTH, RANGE 5 WEST, WILLAMETTE MERIDIAN; SECTION 34 CORNER  
**DONATION LAND CLAIM** ALFERD WRITSMAN NO. 47 **CORNER** EAST-SOUTHEAST  
**CONDITION REPORT** ; **REFERENCED OUT** ; **RENEWED** XX; **SURVEYED IN**

**LOCATION AND COMMENTS:**

CORNER IS LOCATED ON A LEVEL LOGGED OVER AREA ABOUT 55' EAST-NORTHEASTERLY FROM A DIRT ROAD, 73' WEST OF A POSTED AND BLAZED LINE, NEAR DOWNED EAST-WEST BARBED WIRE FENCE AND ABOUT 5' EAST OF A DOWNED NORTH SOUTH BARBED WIRE FENCE. FROM THE INTERSECTION OF SOAP CREEK ROAD AND THE DRIVEWAY TO #37461, FOLLOW DRIVEWAY FOR 0.15 MILES TO RIGHT FORK, GO UP DIRT ROAD FOR 0.1 MILES TO MEADOW. CORNER IS ABOUT 250' NORTH NORTHWESTERLY OF THE WESTERLY END OF MEADOW. CORNER IS GOOD FOR PREPARING AND GPS CONTROL.

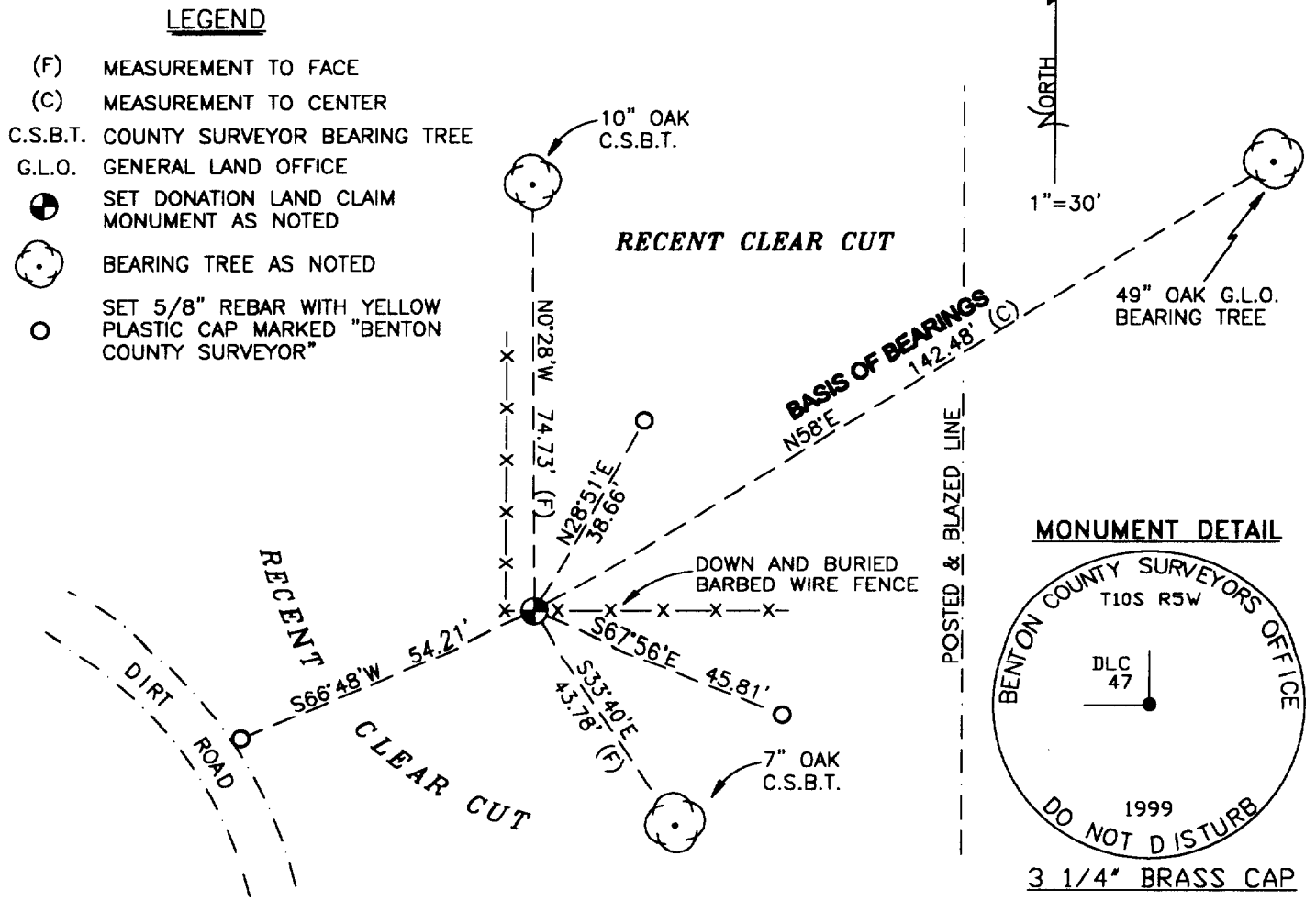
**MONUMENTS AND ACCESSORIES FOUND (CONDITION AND SOURCE):**

- FOUND: ORIGINAL GLO MONUMENT PER RECORD [01], AN UNDISTURBED 8"x8"x17" STONE WITH THE EASTERLY CORNER CHIPPED OFF, 1" DEEP AND MARKED "C47" ON THE NORTH FACE.
- FOUND: ORIGINAL GLO BEARING TREE PER RECORD [01], A 49" OAK WITH HEALED FACE BEARING N58°E, (BASIS OF BEARINGS) 142.48 FEET TO CENTER (24" OAK N58°E, 141.9 FEET PER RECORD [01], 33.99 FEET PER RECORD [05], 50" OAK 142.9 FEET PER RECORD [06]. SET ALUMINUM NAIL AND PLASTIC WASHER IN NORTHWESTERLY BASE.

**MONUMENT SET (PROCEDURES AND DESCRIPTION):**

SET 2" INSIDE DIAMETER X 36" GALVANIZED IRON PIPE WITH A 3 1/4" BENTON COUNTY BRASS DISK CONCRETED IN THE TOP, STAMPED AS SHOWN, IN THE SAME X,Y POSITION AS THE UPPER SOUTHWESTERLY CORNER OF SAID FOUND STONE. THIS POINT IS ABOUT 0.2' NORTH-NORTHEASTERLY FROM THE PHYSICAL CENTER OF THE STONE. BURIED SAID ORIGINAL STONE ON THE SOUTHERLY SIDE OF NEW MONUMENT.

**SKETCH**



**BENTON COUNTY CORNER RESTORATION FORM, PAGE 2 OF 2, 105847020R1  
SEE CORNER HISTORY FORM FOR RECORDS ETC.**

**NEW ACCESSORIES:**

A 10" OAK, FACE SCRIBED "DLC 47 BT" BEARS N0°28'W, 74.73 FEET TO FACE (75.2 FEET TO SIDE CENTER).  
A 7" OAK, FACE SCRIBED "X" BEARS S33°40'E, 43.78 FEET TO FACE (44.1 FEET TO SIDE CENTER).  
SET: REBAR (SEE NOTES) 7" BELOW GROUND SURFACE, (BGS), S67°56'E, 45.81 FEET.  
SET: REBAR (SEE NOTES) 6" BGS, S66°48'W, 54.21 FEET.  
SET: REBAR (SEE NOTES) 7" BGS, N28°51'E, 38.66 FEET.  
SET: 6" ORANGE FIBERGLASS "SURVEY MARKER" POST, 1 FOOT NORTHERLY OF MONUMENT.

**NOTES:**

COMPASS DECLINATION IS 20° EAST. ALL MEASURED DISTANCES AND BEARINGS ARE TO THE CENTER OF THE OBJECT, UNLESS OTHERWISE NOTED. ALL BEARING TREES ARE PAINTED AND HAVE A B.T. TAG ATTACHED, FACING THE CORNER UNLESS OTHERWISE NOTED. ALL NEW BEARING TREES HAVE A PLASTIC WASHER (STAMPED "BENTON COUNTY SURVEYOR CORNER RESTORATION") ATTACHED (BY ALUMINUM NAIL) TO THE FACE, BELOW THE "BT" FOR DISTANCE AND ANGLE MEASUREMENT UNLESS OTHERWISE NOTED. ALL SET REBAR ARE 5/8" X 30" AND HAVE A YELLOW PLASTIC CAP (STAMPED "BENTON COUNTY SURVEYOR") ATTACHED TO THE TOP.

THIS DOCUMENT WAS NAMED AND CREATED IN A MANNER SIMILAR TO THE HISTORY FORM.  
THE NAME OF THE BOILER PLATE IS "MONUMENT". THE BORDER, STAMP AND SKETCH  
ARE FROM AUTOCAD RELEASE 14.

THIS RESTORATION WAS PERFORMED AT THE DIRECTION AND APPROVAL OF  
THE BENTON COUNTY/DEPUTY COUNTY SURVEYOR. CJL

**FIRM/AGENCY:** BENTON COUNTY SURVEYOR'S OFFICE  
**ADDRESS:** 360 S.W. AVERY AVE. CORVALLIS OR 97333; PH. 757-6821  
**SURVEYOR:** CURTIS J. LIESENFELT, P.L.S.  
**SURVEY CREW:** DAVID M. DEAN, P.L.S.

REGISTERED  
PROFESSIONAL  
LAND SURVEYOR

*Curtis J. Liesenfelt*

OREGON  
JULY 17, 1986  
CURTIS J. LIESENFELT  
2213

LICENSE RENEWAL 12/31/2000