

105852020

CORNER FILE TRACKING

S:\Survey Corners\CORNERS\Templates\Filetrac2.doc
10/04/2010

CORNER NUMBER
105852020

STEP	HISTORY	RESTORATION
Form Prepared, DB	10/13/14	11/06/14
Field Inspection, DB	11/04/14	11/04/14
Finish index (count unit)	10/13/14	11/04/14
Counter Index	11/04/14	11/04/14
GIS Index Form	11/06/14	11/06/14
Checked, DB	11/07/14	11/07/14
Form Edited, DB	11/20/14	11/20/14
Form Signed, DB	11/21/14	11/21/14
Authorize Payment, DB	—	—
Archive Digital Files	11/20/14	11/20/14
Collect Documents	11/20/14	11/20/14
PDF File	11/21/14	11/21/14
Copy For Filming	11/21/14	11/21/14
Scanned (pdf to laserfiche)	11/21/14	11/21/14
Filmed (Archived), DB		
Filed, DB		

(DB) = Entry needed in database (Access).

COMMENTS:

DATE 10/13/2014TOWNSHIP 10 SOUTH, RANGE 5 WEST, WILLAMETTE MERIDIAN; SECTION 10 CORNER N/A
DONATION LAND CLAIM THOMAS W. BERRY NO. 52 CORNER SOUTHWEST**COMMON CORNER(S):**SOUTHEAST CORNER OF THE WILLIAM J. BERRY DONATION LAND CLAIM NO. 53
POINT ON A NORTHERLY INTERIOR LINE OF THE MORGAN R. SAVAGE DONATION LAND CLAIM NO. 55**RECORDS (INFORMATION IN *BOLD ITALICS* IS COUNTY STAFFS' INTERPRETATION OF THE RECORD)**

BASED ON EXTENSIVE RESEARCH AND RECOVERY OF EVIDENCE, THIS OFFICE HAS DETERMINED THAT MOST GENERAL LAND OFFICE SURVEYORS IN BENTON COUNTY MEASURED TO THE FACE OF BEARING TREES.

- [01] GENERAL LAND OFFICE (GLO) NOTES OF THE THOMAS W. BERRY DONATION LAND CLAIM (DLC) NO. 52 BY DENNIS HATHORN, D.S., DATED AUGUST 22, 1854. *SET POST FOR SOUTHWEST CORNER, DEPOSITED 2 STONES 3" X 5" AND 4" X 10" AND DUG TRENCH. 1/4 SECTION POST BETWEEN SECTIONS 9 AND 10 BEARS N37°30'W, 1.35 CHAINS (89.10 FEET).*
- [02] GENERAL LAND OFFICE NOTES OF THE WILLIAM J. BERRY DLC NO. 53 BY DENNIS HATHORN, D.S., DATED AUGUST 23, 1854. *SET POST, DEPOSITED 2 STONES 3" X 5" AND 4" X 10" AND DUG TRENCH. 1/4 SECTION POST BETWEEN SECTIONS 9 AND 10 BEARS N37°30'W, 1.35 CHAINS (89.10 FEET).*
- [03] GENERAL LAND OFFICE NOTES OF THE MORGAN R. SAVAGE DLC NO. 55 BY DENNIS HATHORN, D.S., DATED AUGUST 25, 1854. *T. W. BERRY'S SOUTHWEST AND W. J. BERRY'S SOUTHEAST CORNER.*
- [04] BENTON COUNTY SURVEY NO. 587 (OLD NO. 134) FIELD NOTES (FIELD BOOK 22, PAGE 58) BY W. C. GALLOWAY, C.S., NO DATE GIVEN. *SET WAGON THIMBLE 12" UNDER SURFACE. ASH 12" DIA BEARS S52°53'E, 8.146 CHAINS SLOPE (537.64 FEET). EAST CORNER SCHOOL HOUSE BEARS S6°27'W.*
- [05] BENTON COUNTY CORNER RESTORATION BOOK NO. 1, PAGE 121, BY W. C. GALLOWAY, C.S., DATED APRIL, 1917. *SET WAGON THIMBLE 12" UNDER SURFACE. SET ON LINE PROPORTIONAL DISTANCE. ASH 12" DIA (CSBT) BEARS S52°53'E, 8.146 CHAINS SLOPE (537.64 FEET). EAST CORNER OF SCHOOL HOUSE BEARS S6°27'W.*
- [06] BENTON COUNTY CORNER RESTORATION NO. 302. *TRANSCRIBED FROM RECORD [05] AND MAY CONTAIN ERRORS AND/OR OMISSIONS.*
- [07] POLK COUNTY CORNER RESTORATION BOOK C, PAGE 121, BY W. W. LARSEN, D.C.S., NO DATE GIVEN. *CORNER NOT DESCRIBED.*
- [08] POLK COUNTY CORNER RESTORATION BOOK E, PAGE 62. *TRANSCRIBED FROM RECORD [05] AND MAY CONTAIN ERRORS AND/OR OMISSIONS.*
- [09] BENTON COUNTY SURVEY NO. 587 (OLD NO. 134) MAP BY F. MARION WILKES, C.S., DATED DECEMBER 19, 1912, AND BY W. C. GALLOWAY, C.S., DATED MARCH 8, 1920. *WAGON THIMBLE 12" UNDER SURFACE. ASH 12" DIA (CSBT) BEARS S52°53'E, 8.146 CHAINS SLOPE (537.64 FEET). EAST CORNER OF SCHOOL HOUSE BEARS S6°27'W. QUART BOTTLE 14" UNDER SURFACE BEARS NORTHWESTERLY, 1.35 CHAINS (89.10 FEET).*
- [10] BENTON COUNTY SURVEY NO. 387 (OLD NO. 134) MAP BY UNKNOWN DRAFTSMAN, NO DATE GIVEN. *WAGON THIMBLE 12" UNDER SURFACE. ASH 12" DIA (CSBT) BEARS S52°53'E, 8.146 CHAINS SLOPE (537.64 FEET). EAST CORNER OF SCHOOL HOUSE BEARS S6°27'W. QUART BOTTLE 10" UNDER SURFACE AT 1/4 CORNER BEARS N38°02'W, 1.35 CHAINS (89.10 FEET).*
- [11] BENTON COUNTY MAP NO. 10-5-00002 BY UNKNOWN DRAFTSMAN, NO DATE GIVEN. ALSO RECORDED AS POLK COUNTY SURVEY NO. 14322. *WAGON THIMBLE 12" UNDER SURFACE. ASH 12" DIA (CSBT) BEARS S52°53'E, 8.146 CHAINS SLOPE (537.64 FEET). EAST CORNER OF SCHOOL HOUSE BEARS S6°27'W. QUART BOTTLE 10" UNDER SURFACE AT 1/4 CORNER BEARS N38°02'W, 1.35 CHAINS (89.10 FEET).*
- [12] BENTON COUNTY MAP NO. 10-5-00004 BY UNKNOWN DRAFTSMAN, NO DATE GIVEN. *WAGON THIMBLE 12" UNDER SURFACE. ASH 12" DIA (CSBT) BEARS S52°53'E, 8.146 CHAINS SLOPE (537.64 FEET). EAST CORNER OF SCHOOL HOUSE BEARS S6°27'W.*
- [13] BENTON COUNTY SURVEY NO. 2110 (OLD NO. 134) FIELD NOTES (FIELD BOOK 58, PAGE 110) BY W. C. GALLOWAY, C.S., DATED APRIL 30, 1949. *WAGON THIMBLE 12" UNDER SURFACE. ASH 12" DIA (CSBT) BEARS S52°53'E, 8.146 CHAINS SLOPE (537.64 FEET). EAST CORNER OF SCHOOL BEARS S6°27'W. QUART BOTTLE 10" UNDER SURFACE AT 1/4 CORNER BEARS N38°02'W, 1.35 CHAINS (89.10 FEET).*

FIRM/AGENCY: BENTON COUNTY SURVEYOR'S OFFICE
ADDRESS: 360 S.W. AVERY AVE., CORVALLIS, OR 97333; PH. 541-766-6821
RESEARCH BY: DAVID L. MALONE, P.L.S.
DATA ENTRY BY: SAME

BENTON COUNTY CORNER RESTORATION FORM, PAGE 1 OF 2, 105852020R2

SEE CORNER HISTORY FORM FOR RECORDS ETC.

CORNER RESTORATION FIELD BOOK NUMBER 30 PAGE(S) 14

DATE 11/04/2014

TOWNSHIP 10 SOUTH, RANGE 5 WEST, WILLAMETTE MERIDIAN; SECTION 10 CORNER N/A

DONATION LAND CLAIM THOMAS W. BERRY NO. 52 CORNER SOUTHWEST

CONDITION REPORT ; REFERENCED OUT ; RENEWED X; SURVEYED IN

LOCATION AND COMMENTS:

CORNER IS LOCATED IN A FARM FIELD EAST OF TAMPICO ROAD. TO REACH CORNER, PARK AT THE INTERSECTION OF DUNN FOREST ROAD 100 WITH TAMPICO ROAD AND WALK APPROXIMATELY 860 FEET N51°E. CORNER IS GOOD FOR PREMARKING AND GPS CONTROL.

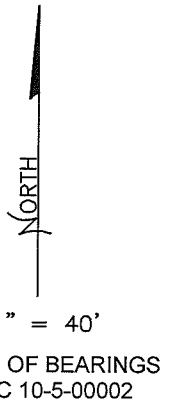
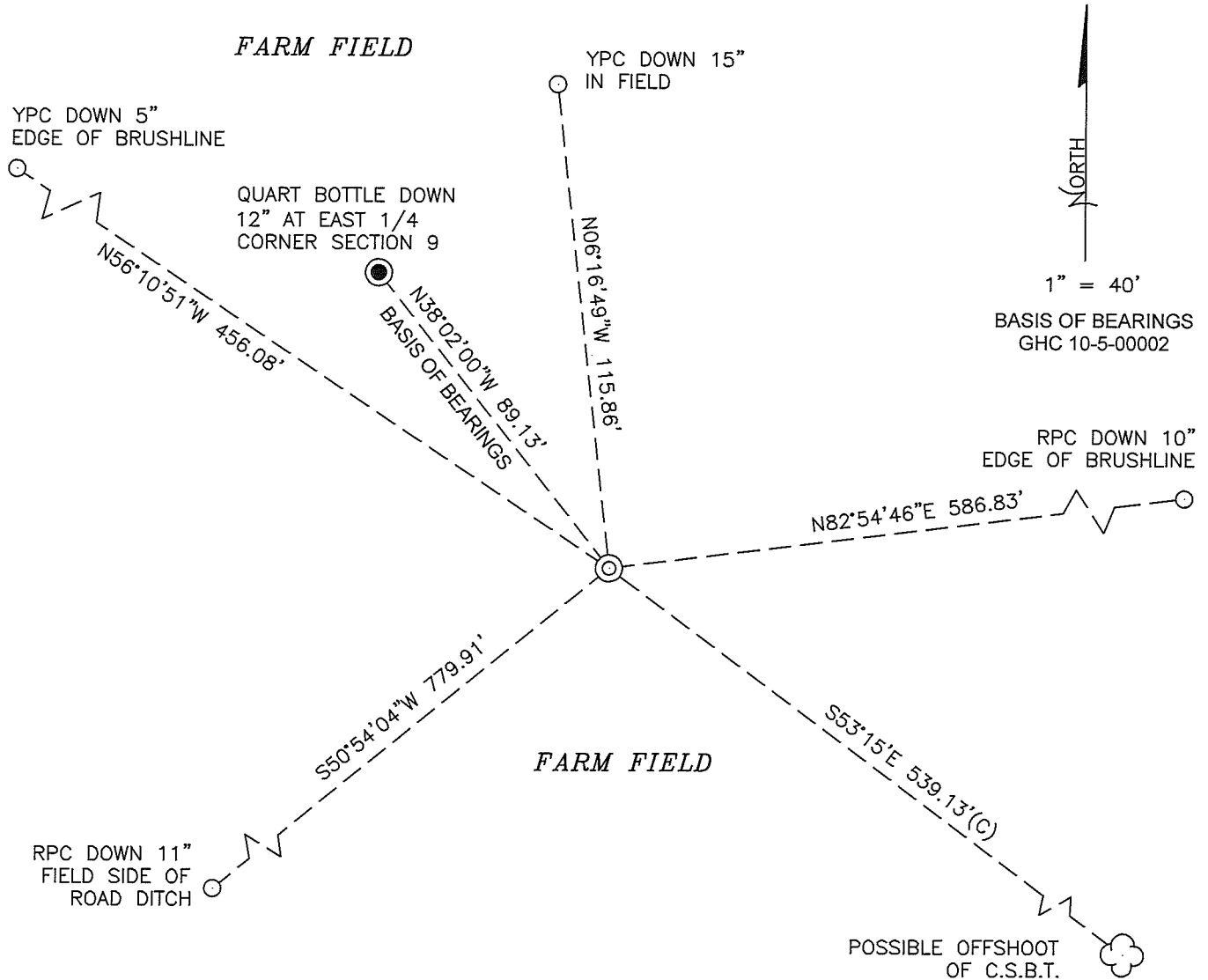
MONUMENTS AND ACCESSORIES FOUND (CONDITION AND SOURCE):

1. FOUND 14" LONG WAGON THIMBLE SKEIN, 12" BELOW GROUND SURFACE AND UNDISTURBED FOR THE CORNER.
(SET POST, DEPOSITED 2 STONES 3" X 5" AND 4" X 10" AND DUG TRENCH AS PER RECORDS [01] AND [02]).
(SET WAGON THIMBLE 12" UNDER SURFACE AS PER RECORD [04]).
(SET WAGON THIMBLE 12" UNDER SURFACE, SET ON LINE PROPORTIONAL DISTANCE AS PER RECORD [05]).
(WAGON THIMBLE 12" UNDER SURFACE AS PER RECORDS [09] – [13]).
2. FOUND QUART BOTTLE BURIED NECK DOWN, 12" BELOW GROUND SURFACE AND UNDISTURBED FOR THE EAST 1/4 CORNER OF SECTION 9, BEARS N38°02'00"W, 89.13 FEET. BASIS OF BEARINGS FOR THIS RESTORATION.
(1/4 SECTION POST BEARS N37°30'W, 1.35 CHAINS [89.10 FEET] AS PER RECORDS [01] AND [02]).
(QUART BOTTLE 14" UNDER SURFACE BEARS NORTHWESTERLY, 1.35 CHAINS [89.10 FEET] AS PER RECORD [09]).
(QUART BOTTLE 10" UNDER SURFACE BEARS N38°02'W, 1.35 CHAINS [89.10 FEET] AS PER RECORDS [10], [11] AND [13]).
3. FOUND ASH 20" DIA BEARS S53°15'E, 539.13 FEET TO CENTER. THIS IS PROBABLY AN OFFSHOOT FROM THE ORIGINAL COUNTY SURVEYOR'S BEARING TREE. SET ALUMINUM NAIL AND PLASTIC WASHER IN SOUTHWESTERLY BASE FOR DISTANCE MEASUREMENT.
(ASH 12" DIA BEARS S52°53'E, 8.146 CHAINS SLOPE [537.64 FEET] AS PER RECORDS [04], [05], AND [09] – [13]).

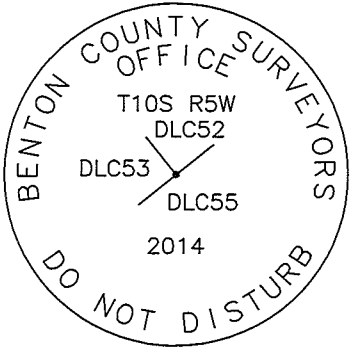
MONUMENT SET (PROCEDURES AND DESCRIPTION):

FOUND 14" LONG WAGON THIMBLE SKEIN, 12" BELOW GROUND SURFACE AND UNDISTURBED FOR THE CORNER. W. C. GALLOWAY, C.S., SET THE WAGON THIMBLE FOR THE DONATION LAND CLAIM CORNER BY PROPORTIONAL DISTANCE IN 1917. NO OTHER EVIDENCE WAS DISCOVERED OF THE ORIGINAL POSITION OF THE CORNER. I HAVE ACCEPTED THE WAGON THIMBLE AS A PERPETUATION OF THE CORNER.

I REMOVED THE WAGON THIMBLE AND IN THE SAME HORIZONTAL POSITION AS THE TOP OF THE WAGON THIMBLE I SET A 2" X 31-1/2" GALVANIZED IRON PIPE WITH A 3-1/4" BRASS DISK CEMENTED IN THE TOP, 15" BELOW GROUND SURFACE AND MARKED AS SHOWN ON PAGE 2 OF 2. SET FOUR NEW IRON ROD ACCESSORIES AS SHOWN ON PAGE 2 OF 2. SET A 6 FOOT ORANGE CARSONITE "SURVEY MARKER" POST 1 FOOT S51°W OF THE SOUTHWEST IRON ROD ACCESSORY, NEAR THE BANK OF THE ROAD SIDE DITCH.



MONUMENT DETAIL



3-1/4" BRASS DISK

POSSIBLE OFFSHOOT OF C.S.B.T. 20" ASH LEANING SOUTHERLY WITH NO VISIBLE MARKS

LEGEND

- SET 5/8" X 30" REBAR WITH PLASTIC CAP
- YPC YELLOW PLASTIC CAP MARKED "BENTON COUNTY SURVEYOR"
- RPC RED PLASTIC CAP MARKED "BENTON COUNTY SURVEYOR'S OFFICE"
- (C) MEASUREMENT TO CENTER
- ⊙ GOVERNMENT MONUMENT SET AS SHOWN
- GOVERNMENT MONUMENT FOUND AS SHOWN
- C.S.B.T. COUNTY SURVEYOR'S BEARING TREE
- ☼ BEARING TREE AS NOTED

NEW ACCESSORIES:

1. SET REBAR (SEE LEGEND) N82°54'46"E, 586.83 FEET AND 10 INCHES BELOW GROUND LEVEL.
2. SET REBAR (SEE LEGEND) S50°54'04"W, 779.91 FEET AND 11 INCHES BELOW GROUND LEVEL.
3. SET REBAR (SEE LEGEND) N56°10'51"W, 456.08 FEET AND 5 INCHES BELOW GROUND LEVEL.
4. SET REBAR (SEE LEGEND) N6°16'49"W, 115.86 FEET AND 15 INCHES BELOW GROUND LEVEL.

NOTES:

COMPASS DECLINATION IS 16° EAST. ALL MEASURED DISTANCES AND BEARINGS ARE TO THE CENTER OF THE OBJECT, UNLESS OTHERWISE NOTED. ALL BEARING TREES ARE PAINTED AND HAVE A B.T. TAG ATTACHED, FACING THE CORNER UNLESS OTHERWISE NOTED. ALL NEW BEARING TREES HAVE A PLASTIC WASHER (STAMPED "SURVEY MARKER DO NOT REMOVE") ATTACHED BY AN ALUMINUM NAIL TO THE SIDE CENTER OF THE TREE FOR DISTANCE MEASUREMENT, UNLESS OTHERWISE NOTED.

THIS RESTORATION WAS PERFORMED AT THE DIRECTION AND APPROVAL OF THE BENTON COUNTY SURVEYOR *JLm*

REGISTERED
PROFESSIONAL
LAND SURVEYOR

FIRM/AGENCY: BENTON COUNTY SURVEYOR'S OFFICE
 ADDRESS: 360 S.W. AVERY AVE., CORVALLIS, OR 97333; PH. 541-766-6821
 PRESENT: DAVID L. MALONE, P.L.S. AND BERNARD ALTENBACH, SURVEY TECH.
 EQUIPMENT: NIKON NIV03.C WITH SURVEY PRO ONBOARD.

11/20/14 David L. Malone

OREGON
JANUARY 12, 1999
DAVID L. MALONE
51523

RENEWAL DATE: 12/31/14

30/14

COOL, CLOUDY

11/04/14
D. MALONE
B. AUTENBACH

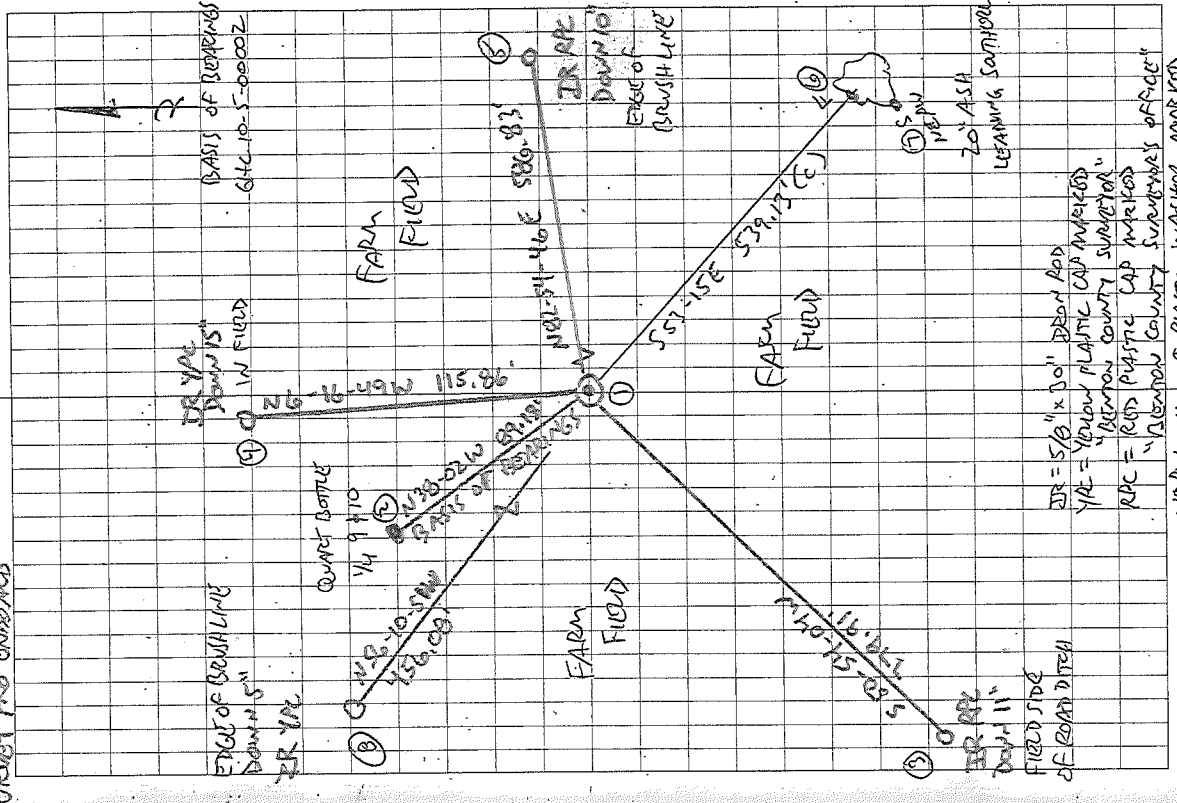
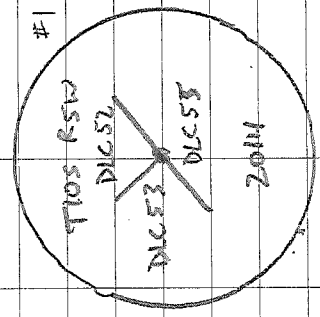
NIKON N1V03.C
SURVEY PRO ON BOARD

105852020

REMANUENT T10'S RSW SOUTHWEST

THOMAS W. BERRY NO. 52

FD WAGON THIMBLE 14" LONG x 1/2" DIA AT THE TOP AND 4"x5" AT THE BOTTOM, 12" BELOW GROUND SURFACE, UNDISTURBED FOR THE CORNER. REMOVED WAGON THIMBLE AND IN SAME HORIZONTAL POSITION AS THE TOP SET 2"x31-1/2" G.I.P. W/ BRASS DISK CEMENTED IN THE TOP, DOWN 15" BELOW GROUND SURFACE. FD COURT BOTTLE AT 1/4 9+10, MARK DOWN, 12" BELOW GROUND SURFACE. BASIS OF SURVINGS. FD SET ASH, PROBABLY AN OFFSHOOT OF THE ORIGINAL CSBT. SET 4 NEW IRON ROD ACCESSORIES. SET 6' ORANGE CASSETTE "SURVEY MARKER" POST 10' S51°W OF SW IRON ROD ACCESSORY, NEAR BANK OF DITCH.



IR = 5/8" x 30" IRON ROD
YAE = YELLOW PLASTIC CAP MARKER
RAC = RED PLASTIC CAP MARKER
NEPW = NAIL & PLASTIC WASTHOX MARKER
"SURVEY MARKER DO NOT REMOVE!"

3-14" BRASS DISK

C.S. #254 cont. 1/4 sec. cor. bet. secs. 26 & 27 T. 14 S. R. 5 W.

Set 4" x 4" x 24" oak stake set a 1 1/4" galv. pipe.

Oak 12" in dia. bears N. 72° E. - 64 chs. std.

Ash 20" " " " S. 44° 30' W. 474 " stump in May 24, 1943

Oak 36" " " " N. 80° W. 420 " stump in May 24, 1943

Witnesses F.A. + Wm Davis July 7, 1917.

C.S. #134 cont.

S.E. corner of Thos. J. Berry D.L.C. #52 T. 10-5

Set 3/4" pipe also cast iron 1" x 5" x 18" by pipe.

Ash 6" in dia. bears S 3° 50' W. 2.613 chs. std.

Oak 12" " " " S 70° 30' W. 5.29 " "

Witnesses

G.A. Sharer

Jos. C. Smith

April 1917

by W.C. Galloway

S. W. cor. of Thos. J. Berry D.L.C. #52 T. 10-5.

Set upon chimney 12' under surface. Set on line proportional

Ash 12 in dia. bears S. 52° 53' E. 8.146 chs. slope

E. corner of school house S. 6° 27' W.



S. W. corner of Thomas J. Berry DLC 52, Twp. 10-5

746302

Reestablishment by W. C. Galloway

April 1917

Set wagon thimble 12" under surface, Set on line proportional distance.
Ash 12" in diam bears S 52° 53' E 8.146 chains (slope)

E. corner of school house S 6° 27' W.

Witnesses G. A. Sharer and Joseph C. Smith

Oct 18, 1934
 W.W. Larson - N.W. corner of Isaac Miller Cl. 37, T 9 S. R 4 W
 Def. es. Set stone 4"x4"x16" from which
 With: Ash 20" in dia. bears N. 6° W. .72 chains sta.
 Oberson " 36" " " " N 43° W. 1.75 " "
 Harris, E. Dbl Ash 36" " " S 75° W. .558 "

how far
 W.C. to N.E. Cor. Isaac Miller Cl. 37, T 9 S R 4 W
 Set Stone 5"x5"x12" from which.
 Ash 16" in dia. bears S. 28° W. .565 chains
 Nail in Balm stump West 1.25 "



W.W. Larson
 recorded

S.W. Cor. of Thos. W. Berry Cl. 52, T 10 S. R 5 W.

1/4 Corner on west of sec 10, T 10 S R 5 W
 Quart bottle 14" under the surface
 Ash 12" in dia. bears S. 50° 48' E 9.45 chains
 Oak 13" " " " S 81° 38' W 6.347 "

S.W. cor of Wm. J. Berry Cl. 53, T. 10 S. R 5 W.
 Pipe in E of Oak stump
 Oak 12" in dia bears N 60° E .77 chains
 " 24" " " " N 18° E 1.75 "

Central North cor of Morgan Savage Cl. 55, T 10 S. R 5 W
 3/4" Pipe + Oak stake from which
 oak stake in fence cor S 34° 32' E 7.347 obs.

S.E. cor. of Sebastian Jewett Cl. 54, T 10 S R 5 W
 Set 4" Oak stake from which
 Oak 14" in dia bears N 84° 15' W. .725 chains.

W.W. Larson
 Def. es.
 W.C. Galloway
 C.S. Pennington

S.W. cor sec 4, T 10 S. R 5 W.
 Set 1" Pipe from which
 Oak 18" in dia. bears N 1° 14' E 7.88 chains
 " 36" " " " S 87° 50' E 7.27 "
 Ash 10" " " " N 60° 36' W 5.535 "

N.W. cor Wm. J. Berry Cl. 53, T 10 S R 5 W
 Set stone with cross from which
 Oak 30" in dia bears S 40° W 6.02 obs sta.

BENTON COUNTY RESTORATIONS

N. E. corner of Thomas Berry DLC 52, Twp. 10-5

Reestablishment by W. C. Galloway

October 1930

Set $\frac{3}{4}$ " pipe

Angle corner between William J and Thomas W. Berry Cls. Twp. 10-5

Reestablishment by W. C. Galloway

October 1930

Set a $\frac{3}{4}$ " pipe

Oak 40" in diam bears N 42° E

52.0 lks.

Oak 8" in diam bears S 85° E

11.0 lks.

Witness Brinkley

S. W. corner of Thomas J. Berry DLC 52, Twp. 10-5

Reestablishment by W. C. Galloway

April 1917

Set wagon thimble 12" under surface, Set on line proportional distance.

Ash 12" in diam bears S 52° 53' E

8.146 chains (slope)

E. corner of school house S 6° 27' W.

Witnesses G. A. Sharer and Joseph C. Smith

S. E. corner of Thomas J. Berry DLC 52, Twp. 10-5

Reestablishment by W. C. Galloway

April 1917

Set $\frac{3}{4}$ " pipe also cast iron 1" x 5" x 18" by pipe

Ash 6" in diam bears S 3° 50' W

2.613 chains

Oak 12" in diam bears S 70° 30' W.

5.29 chains

Witnesses G. A. Sharer and Joseph C. Smith

Most North corner of William J. Berry Cl 53, Twp. 10-5

Reestablishment by W. C. Galloway

October 9, 193

Stone in place 3° Southeast of fence

Oak 30" in diam bears S 32° E

10.43 chains

Oak 15" in diam bears N 5° E

5.43 chains

Witness W. W. Larsen