

106100200

CORNER FILE TRACKING

S:\Survey Corners\CORNERS\Templates\Filetrac2.doc
10/04/2010

CORNER NUMBER
106100200

STEP	HISTORY	RESTORATION
Form Prepared, DB	3/2/18	12/12/19
Field Inspection, DB	11/13/19	11/13/19
Finish index (count unit)	3/2/18	11/13/19
Counter Index	11/13/19	11/13/19
GIS Index Form	11/14/19	11/14/19
Checked, DB	12/13/19	12/13/19
Form Edited, DB	12/13/19	12/13/19
Form Signed, DB	12/13/19	12/13/19
Authorize Payment, DB	—	—
Archive Digital Files	12/13/19	12/13/19
Collect Documents	12/13/19	12/13/19
PDF File	12/13/19	12/13/19
Copy For Filming	12/13/19	12/13/19
Scanned (pdf to laserfiche)	12/13/19	12/13/19
Filmed (Archived), DB		
Filed, DB		

(DB) = Entry needed in database (Access).

COMMENTS:

DATE 03/02/2018TOWNSHIP 10 SOUTH, RANGE 6 WEST, WILLAMETTE MERIDIAN; SECTION 30 CORNER SOUTHWEST
DONATION LAND CLAIM N/A CORNER N/A**COMMON CORNER(S):**NORTHWEST CORNER SECTION 31, TOWNSHIP 10 SOUTH, RANGE 6 WEST
SOUTHEAST CORNER SECTION 25, TOWNSHIP 10 SOUTH, RANGE 7 WEST
NORTHEAST CORNER SECTION 36, TOWNSHIP 10 SOUTH, RANGE 7 WEST**RECORDS (INFORMATION IN *BOLD ITALICS* IS COUNTY STAFFS' INTERPRETATION OF THE RECORD)**

BASED ON EXTENSIVE RESEARCH AND RECOVERY OF EVIDENCE, THIS OFFICE HAS DETERMINED THAT MOST GENERAL LAND OFFICE SURVEYORS IN BENTON COUNTY MEASURED TO THE FACE OF BEARING TREES.

- [01] GENERAL LAND OFFICE (GLO) NOTES BY DANIEL MURPHY, D.S., DATED JUNE 15, 1854. *SET POST FROM WHICH A FIR 36" DIA BEARS S75°W, 17 LINKS (11.22 FEET); A FIR 30" DIA BEARS N9°E, 325 LINKS (214.50 FEET); A FIR 20" DIA BEARS N54°W, 145 LINKS (95.70 FEET); WILLOW 3" DIA BEARS S68°E, 11 LINKS (7.26 FEET).*
- [02] BENTON COUNTY SURVEY NO. 2952 RESTORED CORNER FORM BY LOUIS W. AMORT, P.E., DATED FEBRUARY 27, 1957. *POST MISSING, FOUND 12" X 8" X 12" STONE IN PLACE FROM WHICH A FIR 50" DIA (GLO BT) BEARS N9°E, 325 LINKS (214.50 FEET), BURNT FACE, SCRIBE VISIBLE; FIR SNAG 36" DIA (GLO BT) BEARS S75°W, 17 LINKS (11.22 FEET), NO SCRIBE VISIBLE; ROTTEN FIR STUMP (GLO BT) BEARS N54°W, 145 LINKS (95.70 FEET). USED STONE AS CORNER FROM WHICH A FIR 13" DIA BEARS N56°W, 28.0 FEET, SCRIBED "T10S R7W S25 BT"; FIR 10" DIA BEARS S45°W, 25.2 FEET, SCRIBED "T10S R7W S36 BT"; FIR 14" DIA BEARS S39°E, 17.0 FEET, SCRIBED "T10S R6W S31 BT RE 2311"; FIR 13" DIA BEARS N66°E, 80.0 FEET, SCRIBED "T10S R6W S30 BT". 4 FOOT X 40 FEET WELL BEARS S65°W, 65.0 FEET. SET 4" X 4" X 72" WHITE PAINTED CEDAR POST 1.5 FEET SOUTHEAST OF STONE.*
- [03] BENTON COUNTY CORNER RESTORATION NO. 372. *COPY OF RECORD [02].*
- [04] BENTON COUNTY CORNER RESTORATION NO. 386. *TRANSCRIBED FROM RECORD [02] AND MAY CONTAIN ERRORS AND/OR OMISSIONS.*
- [05] BENTON COUNTY SURVEY NO. 2952 BY LOUIS W. AMORT, P.E., DATED MARCH, 1957. *12" X 8" X 12" STONE. FIR 13" DIA BEARS N56°W, 28.0 FEET; FIR 10" DIA BEARS S45°W, 25.2 FEET; FIR 14" DIA BEARS S39°E, 17.0 FEET; FIR 13" DIA BEARS N66°E, 80.0 FEET.*
- [06] BENTON COUNTY SURVEY NO. 8120 BY MARK E. STEELE, P.L.S., DATED MARCH 16, 1988. *FOUND 12" X 8" X 12" STONE WITH "X" AND 4 BEARING TREES.*
- [07] BENTON COUNTY CORNER RESTORATION FORM NO. 3871 BY DANNA L. FEHRENBACHER, C.S., DATED JANUARY 10, 1991. *FOUND 9" X 12" X ? STONE WITH AN "X" CUT IN THE TOP CENTER FOR THE CORNER. THERE IS A WHITE 4" X 4" WOOD POST 4 FEET HIGH LOCATED 2 FEET EASTERLY FROM THE STONE. FOUND FIR STUMP 66" DIA (GLO BT) WITH THE LOWER PART OF A HEALED FACE BEARS N9°E, 216.8 FEET. FOUND MOSTLY ROTTED REMAINS OF A FIR STUMP 24" DIA (GLO BT) BEARS S71°W, 12.7 FEET. FOUND FIR STUMP 32" DIA BEARS N68°E, 80.5 FEET. FOUND FIR 26" DIA WITH A HEALED FACE BEARS S37°E, 17.00 FEET. SET A PK NAIL AND BRASS WASHER STAMPED "BENTON COUNTY SURVEYOR" (BCBW) IN THE SOUTHWESTERLY BASE. FIR 6" DIA BEARS N85°E, 18.19 FEET, FACED AND SCRIBED "X BT". SET A PK NAIL AND BCBW IN THE NORTHERLY BASE. FIR 12" DIA BEARS S56°W, 68.05 FEET, FACED AND SCRIBED "T10S R7W S36 BT". SET A PK NAIL AND BCBW IN THE NORTHWESTERLY BASE. SET 5/8" X 30" REBAR WITH A YELLOW PLASTIC CAP MARKED "BENTON COUNTY SURVEYOR" BEARS N10°W, 14.40 FEET. SET ORANGE FIBERGLASS "SURVEY MARKER" POST 1 FOOT NORTHERLY.*
- [08] BENTON COUNTY SURVEY NO. 9158 BY THEODORE JAMES LANGTON, P.L.S., DATED DECEMBER 6, 1996. *FOUND 12" X 8" X ? STONE WITH "X" ON TOP. D. FIR 26" DIA BEARS S37°E, 17.0 FEET, HEALED FACE; D. FIR 8" DIA (CSBT) BEARS N85°E, 18.19 FEET, HEALED FACE; ROTTED D. FIR STUMP 18" DIA (GLO BT) BEARS S71°W, 12.7 FEET, NO MARKS.*

FIRM/AGENCY: BENTON COUNTY SURVEYOR'S OFFICE
ADDRESS: 360 S.W. AVERY AVE., CORVALLIS, OR 97333; PH. 541-766-6821
RESEARCH BY: DAVID L. MALONE, P.L.S.
DATA ENTRY BY: SAME

BENTON COUNTY CORNER RESTORATION FORM, PAGE 1 OF 2, 106100200R3

SEE CORNER HISTORY FORM FOR RECORDS ETC.

CORNER RESTORATION FIELD BOOK NUMBER 32 PAGE(S) 52 DATE 11/13/2019
TOWNSHIP 10 SOUTH, RANGE 6 WEST, WILLAMETTE MERIDIAN; SECTION 30 CORNER SOUTHWEST
DONATION LAND CLAIM N/A CORNER N/A
CONDITION REPORT ___; REFERENCED OUT ___; RENEWED X; SURVEYED IN ___

LOCATION AND COMMENTS:

CORNER IS LOCATED IN A FLAT AREA SOUTH OF A STAND OF ±30 YEAR OLD D. FIR, WITH ±50 YEAR OLD D. FIR TO THE SOUTHWEST AND D. FIR TO THE SOUTHEAST AGED SOMEWHERE BETWEEN. TO REACH CORNER FROM THE INTERSECTION OF LUCKIAMUTE ROAD AND HOSKINS ROAD, TRAVEL WESTERLY ALONG HOSKINS ROAD FOR 1.01 MILES AND TURN LEFT ONTO A TIMBER ROAD AND FOLLOW FOR 0.68 MILES TO A WYE, STAY RIGHT FOR 0.01 MILES TO A WYE, TURN LEFT FOR 0.46 MILES TO A WYE, TURN LEFT FOR 0.08 MILES TO A WYE, TURN LEFT FOR 0.34 MILES TO A WYE, STAY RIGHT FOR 0.05 MILES TO A WYE, TURN RIGHT AND PARK. WALK SOUTH ABOUT 300 FEET TO THE CORNER. THE CORNER IS BAD FOR PREMARKING AND GPS CONTROL.

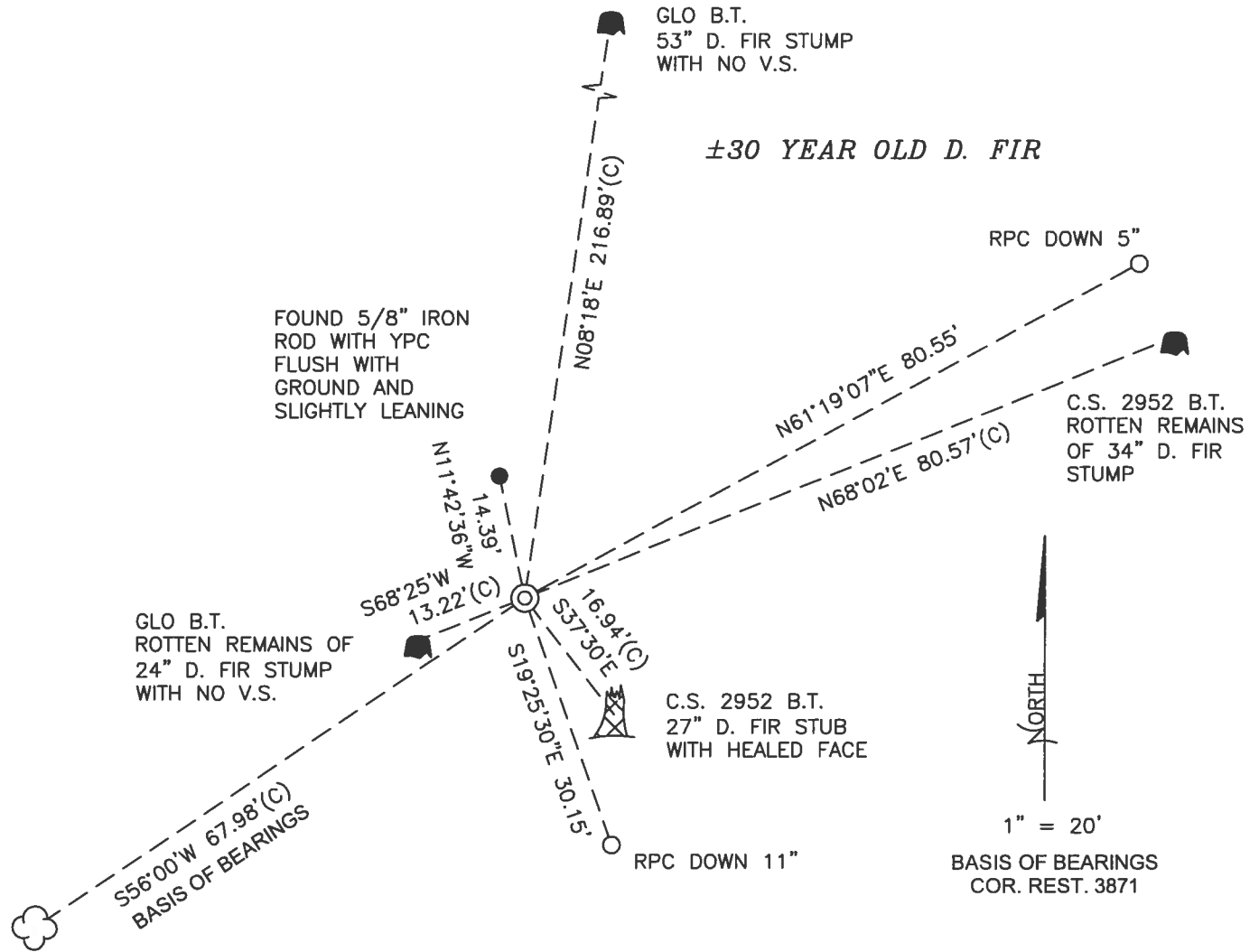
MONUMENTS AND ACCESSORIES FOUND (CONDITION AND SOURCE):

1. FOUND 9" x 12" x 14" STONE WITH "+" ON TOP, FIRMLY SET AND UNDISTURBED, UP 2" ABOVE GROUND SURFACE, FOR THE CORNER.
(SET POST AS PER RECORD [01]).
(POST MISSING, FOUND 12" x 8" x 12" STONE IN PLACE, USED STONE AS CORNER AS PER RECORD [02]).
(12" x 8" x 12" STONE AS PER RECORD [05]).
(FOUND 12" x 8" x 12" STONE WITH "X" AS PER RECORD [06]).
(FOUND 9" x 12" x ? STONE WITH AN "X" CUT IN THE TOP CENTER FOR THE CORNER AS PER RECORD [07]).
(FOUND 12" x 8" x ? STONE WITH "X" ON TOP AS PER RECORD [08]).
2. FOUND D. FIR 30" DIA WITH HEALED FACE BEARS S56°00'W, 67.98 FEET TO CENTER. SET ALUMINUM NAIL AND PLASTIC WASHER IN NORTHWESTERLY BASE FOR DISTANCE MEASUREMENT. **BASIS OF BEARINGS FOR THIS RESTORATION.**
(FIR 12" DIA BEARS S56°W, 68.05 FEET, FACED AND SCRIBED "T10S R7W S36 BT" AS PER RECORD [07]).
3. FOUND ROTTEN REMAINS OF D. FIR STUMP 24" DIA WITH NO VISIBLE SCRIBING BEARS S68°25'W, 13.22 FEET TO CENTER.
(FIR 36" DIA BEARS S75°W, 17 LINKS [11.22 FEET] AS PER RECORD [01]).
(FIR SNAG 36" DIA BEARS S75°W, 17 LINKS [11.22 FEET], NO SCRIBE VISIBLE AS PER RECORD [02]).
(FOUND MOSTLY ROTTED REMAINS OF A FIR STUMP 24" DIA BEARS S71°W, 12.7 FEET AS PER RECORD [07]).
(ROTTED D. FIR STUMP 18" DIA BEARS S71°W, 12.7 FEET, NO MARKS AS PER RECORD [08]).
4. FOUND 5/8" IRON ROD WITH YELLOW PLASTIC CAP MARKED "BENTON COUNTY SURVEYOR" FLUSH WITH GROUND SURFACE AND SLIGHTLY LEANING BEARS N11°42'36"W, 14.39 FEET.
(SET 5/8" x 30" REBAR WITH A YELLOW PLASTIC CAP MARKED "BENTON COUNTY SURVEYOR" BEARS N10°W, 14.40 FEET AS PER RECORD [07]).
5. FOUND D. FIR STUMP 53" DIA WITH NO VISIBLE SCRIBING BEARS N8°18'E, 216.89 FEET TO CENTER.
(FIR 30" DIA BEARS N9°E, 325 LINKS [214.50 FEET] AS PER RECORD [01]).
(FIR 50" DIA BEARS N9°E, 325 LINKS [214.50 FEET], BURNT FACE, SCRIBE VISIBLE AS PER RECORD [02]).
(FOUND FIR STUMP 66" DIA WITH THE LOWER PART OF A HEALED FACE BEARS N9°E, 216.8 FEET AS PER RECORD [07]).
6. FOUND ROTTEN REMAINS OF D. FIR STUMP 34" DIA BEARS N68°02'E, 80.57 FEET TO CENTER.
(FIR 13" DIA BEARS N66°E, 80.0 FEET, SCRIBED "T10S R6W S30 BT" AS PER RECORD [02]).
(FIR 13" DIA BEARS N66°E, 80.0 FEET AS PER RECORD [05]).
(FOUND FIR STUMP 32" DIA BEARS N68°E, 80.5 FEET AS PER RECORD [07]).
7. FOUND D. FIR STUB 27" DIA WITH HEALED FACE BEARS S37°30'E, 16.94 FEET TO CENTER. FOUND PK NAIL AND BRASS WASHER STAMPED "BENTON COUNTY SURVEYOR" IN SOUTHWESTERLY BASE FOR DISTANCE MEASUREMENT.
(FIR 14" DIA BEARS S39°E, 17.0 FEET, SCRIBED "T10S R6W S31 BT RE 2311" AS PER RECORD [02]).
(FIR 14" DIA BEARS S39°E, 17.0 FEET AS PER RECORD [05]).
(FOUND FIR 26" DIA WITH A HEALED FACE BEARS S37°E, 17.00 FEET. SET A PK NAIL AND BRASS WASHER STAMPED "BENTON COUNTY SURVEYOR" IN THE SOUTHWESTERLY BASE AS PER RECORD [07]).
(D. FIR 26" DIA BEARS S37°E, 17.0 FEET, HEALED FACE AS PER RECORD [08]).

MONUMENT SET (PROCEDURES AND DESCRIPTION):

FOUND 9" x 12" x 14" STONE WITH "+" ON TOP, FIRMLY SET AND UNDISTURBED, UP 2" ABOVE GROUND SURFACE, FOR THE CORNER. THE STONE WAS ACCEPTED AS THE CORNER BY LOUIS W. AMORT, P.E., IN 1957, AFTER STATING THAT HE DID NOT FIND THE ORIGINAL GENERAL LAND OFFICE (GLO) POST. AMORT ALSO FOUND THREE GLO BEARING TREES. THE STONE WAS ALSO ACCEPTED BY DANNA L. FEHRENBACHER, BENTON COUNTY SURVEYOR, IN 1991. DUE TO LONG STANDING USAGE AND ACCEPTANCE, THE STONE IS ACCEPTED AS THE PERPETUATION OF THE ORIGINAL CORNER POSITION.

REMOVED STONE AND IN THE SAME HORIZONTAL POSITION AS THE "+" SET A 2" x 31-1/2" GALVANIZED IRON PIPE WITH A 3-1/4" BRASS DISK CEMENTED IN THE TOP, UP 1" ABOVE GROUND SURFACE, AND MARKED AS SHOWN ON PAGE 2 OF 2. LAID STONE HORIZONTAL ON SOUTH SIDE OF BRASS DISK. FOUND ROTTEN 4" x 4" WOOD POST LYING ON GROUND. LAID HORIZONTAL BY STONE. SET TWO NEW IRON ROD ACCESSORIES AS SHOWN ON PAGE 2 OF 2. FOUND WHITE FIBERGLASS POST 10" WEST OF BRASS DISK. FOUND ORANGE FIBERGLASS "SURVEY MARKER" POST 1 FOOT NORTH OF BRASS DISK.

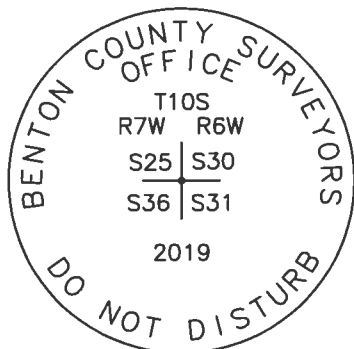


LEGEND

- SET 5/8" X 30" REBAR WITH PLASTIC CAP
- YPC YELLOW PLASTIC CAP MARKED "BENTON COUNTY SURVEYOR"
- RPC RED PLASTIC CAP MARKED "BENTON COUNTY SURVEYOR"
- FOUND MONUMENT AS NOTED
- (C) MEASUREMENT TO CENTER
- ⊙ GOVERNMENT MONUMENT SET AS SHOWN
- V.S. VISIBLE SCRIBING
- C.S. COUNTY SURVEY
- C.S.B.T. COUNTY SURVEYOR'S BEARING TREE
- GLO GENERAL LAND OFFICE
- COR. REST. CORNER RESTORATION
- B.T. BEARING TREE
- BEARING TREE STUMP AS NOTED
- ☁ BEARING TREE AS NOTED
- ⚡ BEARING TREE STUB AS NOTED

±50 YEAR OLD D. FIR

MONUMENT DETAIL



3-1/4" BRASS DISK

NEW ACCESSORIES:

1. SET REBAR (SEE LEGEND) S19°25'30"E, 30.15 FEET AND 11 INCHES BELOW GROUND LEVEL.
2. SET REBAR (SEE LEGEND) N61°19'07"E, 80.55 FEET AND 5 INCHES BELOW GROUND LEVEL.

NOTES:

COMPASS DECLINATION IS 15° EAST. ALL MEASURED DISTANCES AND BEARINGS ARE TO THE CENTER OF THE OBJECT, UNLESS OTHERWISE NOTED. ALL BEARING TREES ARE PAINTED AND HAVE A B.T. TAG ATTACHED, FACING THE CORNER UNLESS OTHERWISE NOTED. ALL NEW BEARING TREES HAVE A PLASTIC WASHER (STAMPED "SURVEY MARKER DO NOT REMOVE") ATTACHED BY AN ALUMINUM NAIL TO THE SIDE CENTER OF THE TREE FOR DISTANCE MEASUREMENT, UNLESS OTHERWISE NOTED.

THIS RESTORATION WAS PERFORMED AT THE DIRECTION AND APPROVAL OF THE BENTON COUNTY SURVEYOR *[Signature]*

REGISTERED
PROFESSIONAL
LAND SURVEYOR

12/13/19 *David L. Malone*

FIRM/AGENCY: BENTON COUNTY SURVEYOR'S OFFICE
 ADDRESS: 360 S.W. AVERY AVE., CORVALLIS, OR 97333; PH. 541-766-6821
 PRESENT: DAVID L. MALONE, P.L.S., AND BERNARD ALTENBACH, SURVEY TECH.
 EQUIPMENT: NIKON NIVO3.C WITH SURVEY PRO ONBOARD.

OREGON
 JANUARY 12, 1999
 DAVID L. MALONE
 51523

RENEWAL DATE: 12/31/20

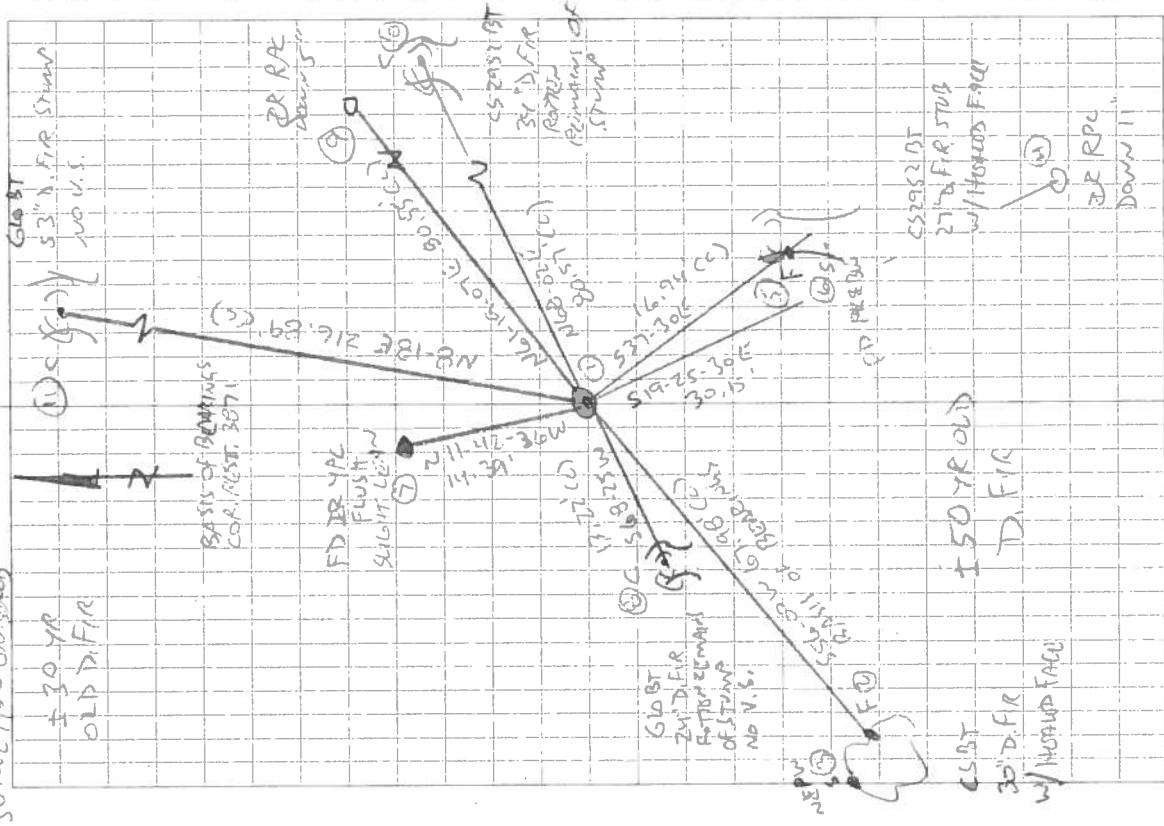
3452

12/13/19

Cool, overcast

D. ANTONIS
B. HERRINGHILL

NIKON NIVOS-C
SURVEY PRO ON MOUNTED



106 100200
RTW R6W
25 30
30 31

RE MONUMENT T105

FD 9" x 12" x 14" STONE WITH "+" ON TOP FOR CORNER, UP 2" MOVE GROUND SURFACE, FIRMLY SET & UNDISTURBED, FOUND ORANGE FIBERGLASS POST

"SURVEY MARKER" 12" NORTH OF "+" ON STONE.

WHITE FIBERGLASS POST 10" WEST OF "+" ON STONE, WITH SW CSAT FOR BASIS OF BEARINGS FOR COR. REST. 3071 REMOVED STONE AND IN THE SAME HORIZONTAL POSITION AS THE "+" SET 2" x 3 1/2"

G.I.P. w/ 3-1/4" BRASS DISK CENTERED IN THE TOP, UP 1" MOVE GROUND SURFACE, LEAD STONE HORIZONTAL ON SOUTH SIDE OF BRASS DISK, FD POSTER 4" x 4" WOOD POST ON GROUND AND HORIZONTAL BY SWALE.

NE CSAT IS UPRIGHT DID NOT TIE SET 2 NEW

ROD ROD ACCESSORIES

PL & SW = PK NAIL & BRASS W/ OTHER STAMPED

"BENTON COUNTY SURVEYOR"

TR = 1/8" x 3/8" BRON ROD

YIP OR R.P.C. = YELLOW OR RED

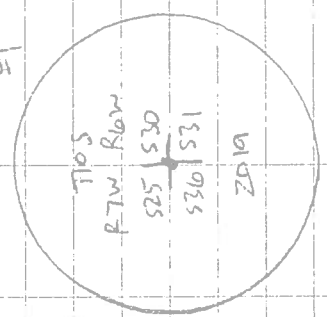
PLUM CAP MARKED

"BENTON COUNTY SURVEYOR"

NEPW = NAIL & PLUM W/ ASHER

STAMPED "SURVEY MARKER"
DO NOT REMOVE

3-1/4" BRASS DISK

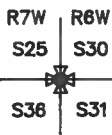


BENTON COUNTY CORNER RESTORATION FORM

SECTION 30 TOWNSHIP 10 S RANGE 6 W DLC _____ CORNER SW 3871
106100200
 DATE 1/10/91 CORNER RESTORATION FIELD BOOK NUMBER 2 PAGE 25

CORNER DESIGNATION:

THE SECTION CORNER COMMON TO SECTIONS 30 AND 31, IN T 10 S, R 6 W, AND SECTIONS 25 AND 36, IN T 10 S, R 7 W, WILLAMETTE MERIDIAN.



- _____ CONDITION REPORT ONLY
- _____ REFERENCED OUT
- XX RENEWED
- _____ SURVEYED IN

LOCATION AND COMMENTS:

THE CORNER IS LOCATED IN A LEVEL AREA ON THE SOUTHERLY EDGE OF A RECENT CLEAR CUT, ABOUT 300 FEET SOUTHEASTERLY FROM A LOGGING ROAD.

PREVIOUS RENEWALS/SURVEYS, ETC:

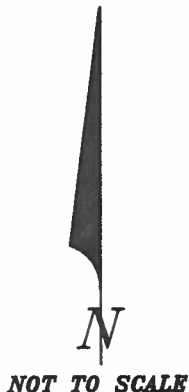
ORIGINAL GLO SURVEY BY DANIEL MURPHY IN 1854.
 CORNER RESTORATION NO. 372 BY LOUIS W. AMORT ON FEBRUARY 27, 1957.
 CORNER RESTORATION NO. 386 BY LOUIS W. AMORT ON FEBRUARY 27, 1957.
 COUNTY SURVEY NO. 2952 BY LOUIS W. AMORT IN MARCH OF 1957.
 COUNTY SURVEY NO. 8120 BY MARK STEELE ON MARCH 16, 1988.

MONUMENTS AND ACCESSORIES FOUND (CONDITION AND SOURCE):

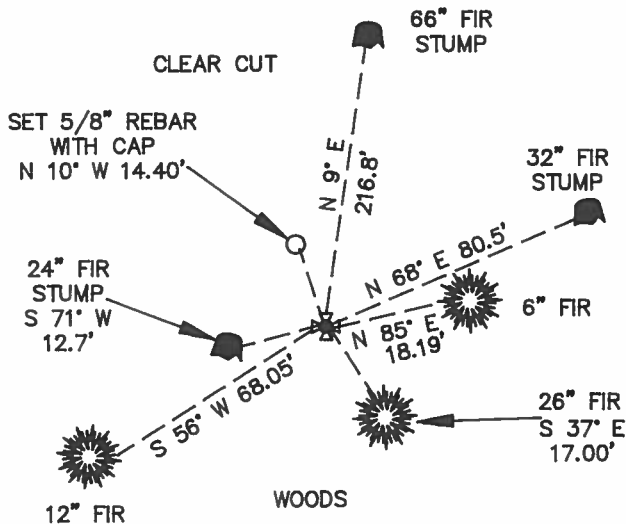
- FOUND: 9" X 12" X ? STONE WITH AN "X" CUT IN THE TOP CENTER FOR THE CORNER (CORNER RESTORATION NO. 372). THERE IS A WHITE 4" X 4" WOOD POST 4 FEET HIGH LOCATED 2 FEET EASTERLY FROM THE STONE.
- FOUND: A FIR STUMP 66" IN DIAMETER WITH THE LOWER PART OF A HEALED FACE, BEARS N 9° E 216.8 FEET (N 9° E 214.50 FEET ORIGINAL GLO FACE MEASUREMENT). SET A B.T. TAG ON TOP.
- FOUND: THE MOSTLY ROTTED REMAINS OF A FIR STUMP 24" IN DIAMETER BEARS S 71° W 12.7 FEET (S 75° W 11.22 FEET ORIGINAL GLO FACE MEASUREMENT). SET A B.T. TAG ON THE EASTERLY FACE.
- FOUND: A FIR STUMP 32" IN DIAMETER BEARS N 68° E 80.5 FEET (N 66° E 80.0 FEET CORNER RESTORATION NO. 372). SET A B.T. TAG ON TOP.
- FOUND: A FIR 26" IN DIAMETER WITH A HEALED FACE BEARS S 37° E 17.00 FEET (S 39° E 17.0 FEET CORNER RESTORATION NO. 372). SET A PK NAIL AND B.C.B.W. IN THE SOUTHWESTERLY BASE. FOUND A B.T. TAG ON THE NORTHWESTERLY FACE, SET A NEW TAG BELOW IT.

NO OTHER RECORD BEARING OBJECTS WERE RECOVERED.

MONUMENT DETAIL



SKETCH



MONUMENT SET (PROCEDURES AND DESCRIPTION):

USED THE STONE AS RECOVERED FOR THE CORNER MONUMENT.

NEW ACCESSORIES:

- A FIR 6" IN DIAMETER BEARS N 85° E 18.19 FEET, FACED AND SCRIBED "X BT". SET A PK NAIL AND B.C.B.W. IN THE NORTHERLY BASE. SET A B.T. TAG ON THE WESTERLY FACE.
- A FIR 12" IN DIAMETER BEARS S 56° W 68.05 FEET, FACED AND SCRIBED "T10S R7W S38 BT". SET A PK NAIL AND B.C.B.W. IN THE NORTHWESTERLY BASE. SET A B.T. TAG ON THE NORTHEASTERLY FACE.
- SET: A 5/8" X 30" REBAR WITH A YELLOW PLASTIC CAP MARKED "BENTON COUNTY SURVEYOR" BEARS N 10° W 14.40 FEET.
- SET: ORANGE FIBERGLASS "SURVEY MARKER" POST 1 FOOT NORTHERLY.

NOTES:

B.C.B.W. IS A BRASS WASHER STAMPED "BENTON COUNTY SURVEYOR". COMPASS DECLINATION IS 20° EAST. ALL MEASURED DISTANCES AND COMPASS BEARINGS ARE TO THE CENTER OF THE OBJECT, UNLESS OTHERWISE NOTED.

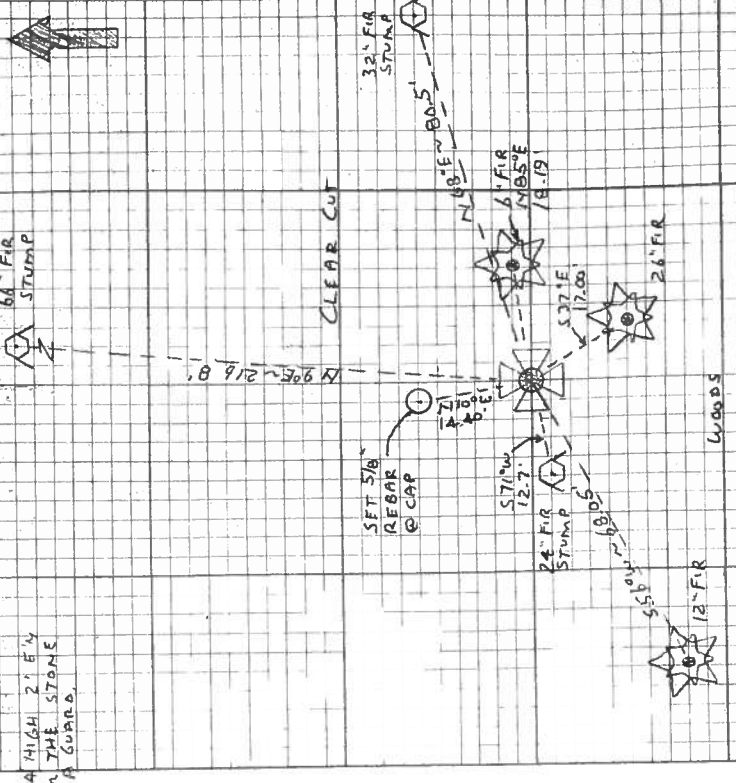
FIRM/AGENCY: BENTON COUNTY PUBLIC WORKS
 ADDRESS: 360 S.W. AVERY AVE. CORVALLIS OR. 97333; PH. 757-6821
 PARTY CHIEF: CURTIS J. LIESENFELT
 CREW: MARK E. ANDERSON
 WITNESS:

REGISTERED
 PROFESSIONAL
 LAND SURVEYOR

Danna L. Fehrenbacher

OREGON
 JULY 16, 1982
 DANNA L. FEHRENBACHER
 1995

11/10/91, GULCH MEAD, SILVA TOMP. 30° E DEC, RAINY, Cool, P. 2-7:30



NO BRASS
CAP WAS
SET

TRAILS R 210 SEE 30 SW COR

Find 9' x 12' x 2' STONE @ A. T. CUT IN THE TOP CTR FOR THE COR. COR REST NO. 372). THERE IS A WHITE 4' x 4' x 1' WOOD POST A HIGH 21.5' W FROM THE STONE AS A GUARD.

" A FIR STUMP @ THE BASE OF A HEALED FACE BEARS N 90° E ~ 218.80 ORIG. G.L.A. FACE MEAS. SET A B.T. TAG ON TOP.

" THE MOSTLY ROTTED REMAINS OF A FIR STUMP ABOUT 40' E IN OR. BEARS S 69° W ~ 57.94 ~ 12.7. (S 75° W ~ 12.22 ORIG. G.L.A. FACE MEAT) SET A B.T. TAG ON THE FIN FACE.

" A FIR STUMP 32" IN DIA BEARS N 80° E ~ 80.5' (N 66° E ~ 80.0 COR REST NO. 372) SET A B.T. TAG ON TOP.

" A FIR 26" IN DIA @ A HEALED FACE BEARS S 37° E ~ 17.00'. (S 39° E ~ 17.0. COR REST. NO. 372) SET A PK + B.C.R.W. IN THE SW IN BASE. END A B.T. TAG ON THE NW 1/4 FACE. SET A NEW TAG BELOW IT.

NO OTHER RECORD BEARING OBJECTS WERE RECOVERED USED THE STONE AS RECOVERED FOR THE COR. MARK.

A FIR 6" IN DIA BEARS N 85° E ~ 18.19. FACE 9' SCURRED & BIT. SET A PK + B.C.R.W. IN THE NW 1/4 BASE. SET A B.T. TAG ON THE NW 1/4 FACE.

A FIR 12" IN DIA BEARS S 56° W ~ 28.05. FACE & SCURRED "TOS R W S 36° BT". SET A PK + B.C.R.W. ON THE NW 1/4 BASE. SET A B.T. TAG ON THE NW 1/4 FACE.

SET: 5/8" x 3/8" REBAR @ A. T. PK. MKD. "BENTON CO. UNITY SURVEYOR" BEARS N 10° W ~ 74.40.

SET: ORANGE FIBERGLASS "SUNLEY MARLEEN POST 1' N. W. Y.

THE COR IS LOCATED IN A LEVEL AREA ON THE SW 1/4 EDGE OF A RECENT CLEAR CUT ABOUT 300' SW FROM A LOGGING ROAD. MAY BE OK FOR FURNISHING & GAS CONTROL.

10-6 30

106100200

C. S. No. 2952

372

RESTORED CORNER FOR OREGON STATE BOARD OF FORESTRY

Section corner common to Sections 25, 30, 31 and 36,
T. 10S, Rges. 6 & 7W, W.M., Benton County, Oregon.

ORIGINAL

Post (now missing, found 12"x8"x12" stone in place) from which a:

- 30" Fir bears N9° E 325 lks.; now 50", burnt face, scribe visible.
- 36" Fir bears S75°W 17 lks.; now 36" snag, no scribe visible.
- 20" Fir bears N54°W 145 lks.; now rotten stump.
- 3" Willow bears S68°E 11 lks.; missing.

RESTORED

Var. 20°E

"Used Above Stone" as corner, from which a:

- 13" Fir bears N56°W 28.0 ft.; scribed TLOS R7W S25 BT.
- 10" Fir bears S45°W 25.2 ft.; scribed TLOS R7W S36 BT.
- 14" Fir bears S39°E 17.0 ft.; scribed TLOS R6W S31 BT RE 2311.
- 13" Fir bears N66°E 80.0 ft.; scribed TLOS R6W S30 BT.

4 ft. x 40 ft. well bears S65°W 65.0 ft.; erected temporary fence around it.

Oregon State Board of Forestry metal location poster on 14" Fir bt.

Set 4"x4"x72" white painted Cedar post 1.5 ft. SE of stone.

Dated February 27, 1957.

Restored by



Present and witnessed by R. Baldock
 D. Bagger
 H. Baughn
 B. Davis

Section corner between Sections 25, 30, 31 and 36, Twp. 10 S., R. 6 & 7 W.

Reestablishment by Louis W, Amort

February 27, 1957

Accepted 12"x8"x12" stone in place

Fir 30" N9°E. 3.25; burnt face, scribe visible

Fir 36" S75°W. .17; snag

Fir 20" N54°W. 1.45; rotten stump

Willow 3" S68°E. .11; gone

Fir 13" N56°W. 28.0 ft.; scribed T10S R7W S25 BT

Fir 10" S45°W. 25.2 ft.; scribed T10S R7W S36 BT

Fir 14" S39°E. 17.0 ft.; scribed T10S R6W S31 BT RE 2311

Fir 13" N66°E. 80.0 ft.; scribed T10S R6W S30 BT

4 ft. x 40 ft. well S65°W. 65.0 ft.; erected temporary fence around it

Oregon State Board of Forestry metal location poster on Fir 14" by.

Set 4"x4"x72" white painted Cedar post 1.5 ft SE of stone

Witnesses R. Baldock, D. Bagger, H. Baughn and B. Davis

C. S. No. 2952

RESTORED CORNER FOR OREGON STATE BOARD OF FORESTRY

Section corner common to Sections 25, 30, 31 and 36,
T. 10S, Rges. 6 & 7W, W.M., Benton County, Oregon.

ORIGINAL

Post (now missing, found 12"x8"x12" stone in place) from which a:

- 30" Fir bears N9° E 325 lks.; now 50", burnt face, scribe visible.
- 36" Fir bears S75°W 17 lks.; now 36" snag, no scribe visible.
- 20" Fir bears N54°W 145 lks.; now rotten stump.
- 3" Willow bears S68°E 11 lks.; missing.

RESTORED

Var. 20°E

"Used Above Stone" as corner, from which a:

- 13" Fir bears N56°W 28.0 ft.; scribed TLOS R7W S25 BT.
- 10" Fir bears S45°W 25.2 ft.; scribed TLOS R7W S36 BT.
- 14" Fir bears S39°E 17.0 ft.; scribed TLOS R6W S31 BT RE 2311.
- 13" Fir bears N66°E 80.0 ft.; scribed TLOS R6W S30 BT.

4 ft. x 40 ft. well bears S65°W 65.0 ft.; erected temporary fence around it.

Oregon State Board of Forestry metal location poster on 14" Fir bt.

Set 4"x4"x72" white painted Cedar post 1.5 ft. SE of stone.

Dated February 27, 1957.

Restored by



Present and witnessed by R. Baldock
D. Bagger
H. Baughn
B. Davis