

106140100

CORNER FILE TRACKING

S:\Survey Corners\CORNERS\Templates\Filetrac2.doc

10/04/2010

CORNER NUMBER
106140100

STEP	HISTORY	RESTORATION
Form Prepared, DB	3/18/14	10/27/14
Field Inspection, DB	10/20/14	10/20/14
Finish index (count unit)	3/10/14	10/20/14
Counter Index	10/23/14	10/23/14
GIS Index Form	10/27/14	10/27/14
Checked, DB	11/05/14	11/05/14
Form Edited, DB	11/20/14	11/20/14
Form Signed, DB	11/21/14	11/21/14
Authorize Payment, DB	—	—
Archive Digital Files	11/20/14	11/20/14
Collect Documents	11/20/14	11/20/14
PDF File	11/21/14	11/21/14
Copy For Filming	11/21/14	11/21/14
Scanned (pdf to laserfiche)	11/21/14	11/21/14
Filmed (Archived), DB		
Filed, DB		

(DB) = Entry needed in database (Access).

COMMENTS:

DATE 03/18/2014TOWNSHIP 10 SOUTH, RANGE 6 WEST, WILLAMETTE MERIDIAN; SECTION 31 CORNER SOUTH 1/4
DONATION LAND CLAIM N/A CORNER N/A**COMMON CORNER(S):**

POINT ON NORTH LINE OF SECTION 6, TOWNSHIP 11 SOUTH, RANGE 6 WEST

RECORDS (INFORMATION IN BOLD ITALICS IS COUNTY STAFFS' INTERPRETATION OF THE RECORD)

BASED ON EXTENSIVE RESEARCH AND RECOVERY OF EVIDENCE, THIS OFFICE HAS DETERMINED THAT MOST GENERAL LAND OFFICE SURVEYORS IN BENTON COUNTY MEASURED TO THE FACE OF BEARING TREES.

- [01] GENERAL LAND OFFICE (GLO) NOTES BY GEORGE W. HYDE, D.S., DATED MAY 17, 1852. *NORTH BOUNDARY OF SECTION 6, TOWNSHIP 11 SOUTH, RANGE 6 WEST, RUN AS PART OF THE SECOND STANDARD PARALLEL SOUTH. SOUTH 1/4 CORNER OF SECTION 31, TOWNSHIP 10 SOUTH, RANGE 6 WEST NOT SET AS PART OF THIS SURVEY.*
- [02] GENERAL LAND OFFICE (GLO) NOTES BY DANIEL MURPHY, D.S., DATED OCTOBER 31, 1853. *WEST ON THE SOUTH BOUNDARY OF SECTION 31 ALONG 2ND STANDARD PARALLEL SOUTH. SET 1/4 SECTION POST 15 CHAINS AND 10 LINKS (996.60 FEET) WEST OF PRE-ESTABLISHED 1/4 SECTION CORNER (NORTH 1/4 CORNER SECTION 6), FROM WHICH A FIR 20" DIA BEARS N27°W, 357 LINKS (235.62 FEET); A FIR 20" DIA BEARS N34-1/2°E, 424 LINKS (279.84 FEET).*
- [03] BENTON COUNTY SURVEY NO. 252 (OLD NO. 98) FIELD NOTES (FIELD BOOK 7, PAGE 75) BY J. A. GANONG, D.C.S., DATED MAY 19, 1911. *TO 1/4 CORNER SECTION 31 ON 2ND STANDARD PARALLEL SOUTH.*

FIRM/AGENCY: BENTON COUNTY SURVEYOR'S OFFICE
ADDRESS: 360 S.W. AVERY AVE., CORVALLIS, OR 97333; PH. 766-6821
RESEARCH BY: DAVID L. MALONE, P.L.S.
DATA ENTRY BY: SAME

BENTON COUNTY CORNER RESTORATION FORM, PAGE 1 OF 2, 106140100R1

SEE CORNER HISTORY FORM FOR RECORDS ETC.

CORNER RESTORATION FIELD BOOK NUMBER 30 PAGE(S) 9 DATE 10/20/2014
TOWNSHIP 10 SOUTH, RANGE 6 WEST, WILLAMETTE MERIDIAN; SECTION 31 CORNER SOUTH 1/4
DONATION LAND CLAIM N/A CORNER N/A
CONDITION REPORT ; REFERENCED OUT ; RENEWED X; SURVEYED IN

LOCATION AND COMMENTS:

CORNER IS LOCATED ON THE WEST EDGE OF A SKID ROAD WHICH RUNS IN A NORTH-NORTHEAST DIRECTION ALONG THE EDGE OF A RIDGE LINE. ON THE EAST SIDE OF THE SKID ROAD IS A RECENTLY CLEAR CUT STEEP EAST FACING SLOPE. TO REACH THE CORNER FROM THE INTERSECTION OF BURGETT CREEK ROAD AND ALEXANDER ROAD, TRAVEL NORTHERLY ALONG ALEXANDER ROAD 0.52 MILES TO A GATE ON THE LEFT. TRAVEL THROUGH THE GATE 0.03 MILES TO A WYE, TRAVEL LEFT 0.40 MILES TO A WYE, TRAVEL RIGHT 0.56 MILES TO A WYE, TRAVEL RIGHT 0.23 MILES TO A WYE, TRAVEL RIGHT 0.20 MILES TO A WYE, TRAVEL RIGHT ABOUT 450 FEET TO THE CORNER ON THE LEFT SIDE OF THE ROAD. CORNER IS GOOD FOR PREMARKING AND GPS CONTROL.

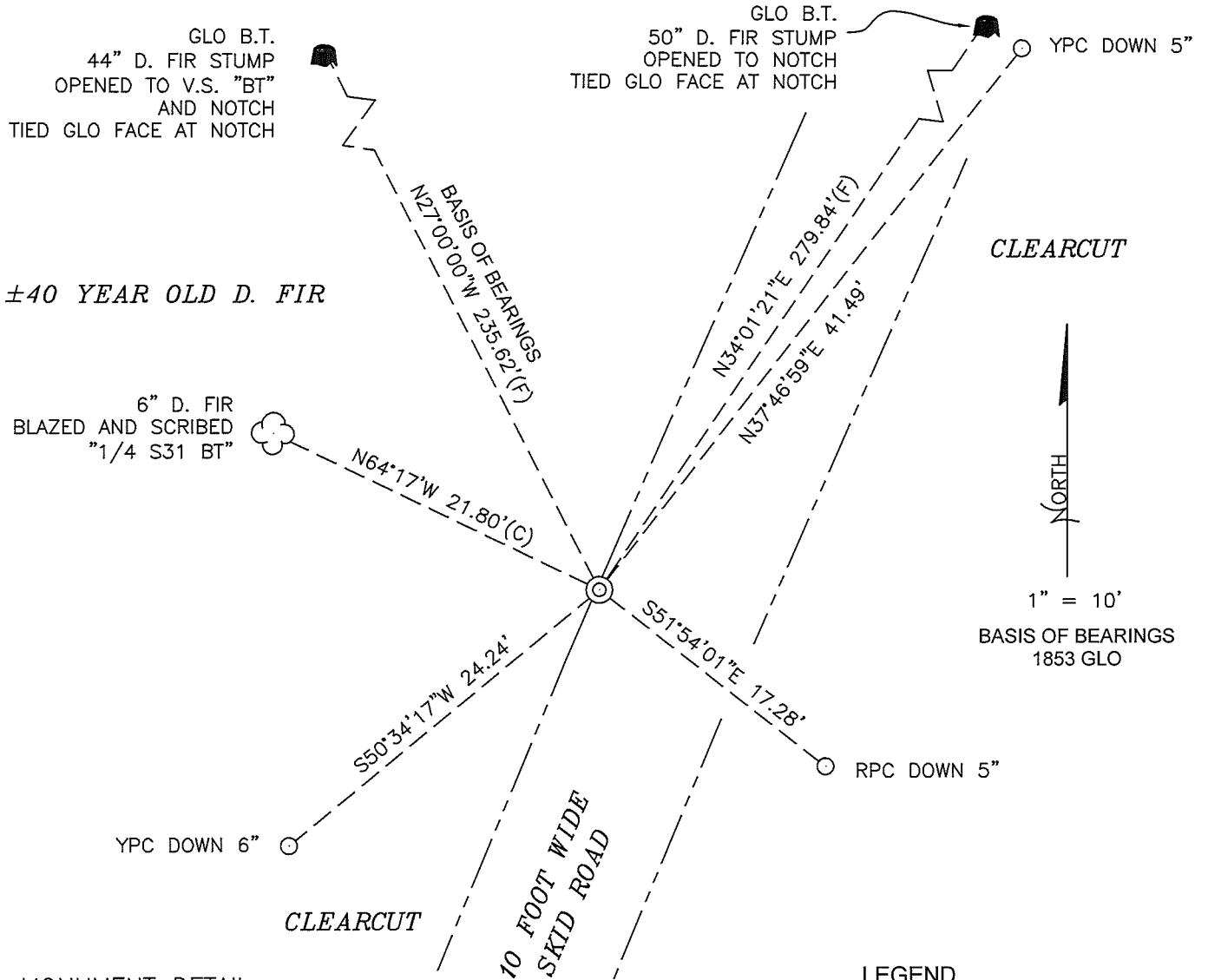
MONUMENTS AND ACCESSORIES FOUND (CONDITION AND SOURCE):

1. FOUND 3/4" IRON PIPE WITH ORANGE PLASTIC CAP INSIDE OF PIPE MARKED "LS 60065", STICKING UP 3" ABOVE GROUND SURFACE.
(SET POST AS PER RECORD [01]).
2. FOUND D. FIR STUMP 44" DIA OPENED TO VISIBLE SCRIBING "BT" AND NOTCH, BEARS N27°00'00"W, 235.62 FEET TO THE ORIGINAL FACE AT THE NOTCH. **BASIS OF BEARINGS FOR THIS RESTORATION.**
(FIR 20" DIA BEARS N27°W, 357 LINKS [235.62 FEET] AS PER RECORD [01]).
3. FOUND D. FIR STUMP 50" DIA OPENED TO NOTCH, BEARS N34°01'21"E, 279.84 FEET TO THE ORIGINAL FACE AT THE NOTCH.
(FIR 20" DIA BEARS N34-1/2°E, 424 LINKS [279.84 FEET] AS PER RECORD [01]).

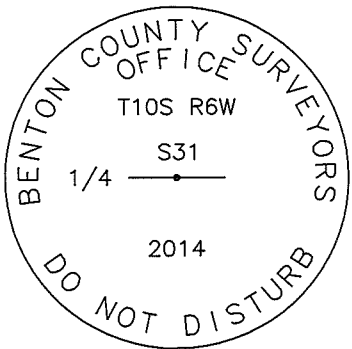
MONUMENT SET (PROCEDURES AND DESCRIPTION):

FOUND 3/4" IRON PIPE WITH ORANGE PLASTIC CAP INSIDE OF PIPE MARKED "LS 60065", FIRMLY SET AND STICKING UP 3" ABOVE GROUND SURFACE. THIS PIPE WAS RECENTLY SET BY BRIAN PETERSON AFTER CONSULTATION WITH THIS OFFICE, USING DISTANCE-DISTANCE INTERSECTION FROM THE ORIGINAL FACE OF EACH GLO BEARING TREE MEASURED AT THE NOTCH. COORDINATES WERE PROVIDED TO THIS OFFICE FOR THE 3/4" IRON PIPE, THE GLO BEARING TREES, AND PETERSON'S CONTROL. THESE COORDINATES WERE USED TO REPLACE THE 3/4" IRON PIPE WITH A NEW MONUMENT AND SET NEW ACCESSORIES.

DROVE IRON PIPE DOWN SEVERAL INCHES AND IN THE SAME HORIZONTAL POSITION SET A 2" X 31-1/2" GALVANIZED IRON PIPE WITH A 3-1/4" BRASS DISK CEMENTED IN THE TOP, UP 4" ABOVE GROUND SURFACE AND MARKED AS SHOWN ON PAGE 2 OF 2. SET THREE NEW IRON ROD ACCESSORIES AND BLAZED AND SCRIBED ONE NEW BEARING TREE AS SHOWN ON PAGE 2 OF 2. SET A 6 FOOT ORANGE CARSONITE "SURVEY MARKER" POST 1 FOOT EAST OF NEW MONUMENT.



MONUMENT DETAIL



LEGEND

- SET 5/8" X 30" REBAR WITH PLASTIC CAP
- YPC YELLOW PLASTIC CAP MARKED "BENTON COUNTY SURVEYOR"
- RPC RED PLASTIC CAP MARKED "BENTON COUNTY SURVEYOR'S OFFICE"
- (F) MEASUREMENT TO FACE
- (C) MEASUREMENT TO CENTER
- ⊙ GOVERNMENT MONUMENT SET AS SHOWN
- V.S. VISIBLE SCRIBING
- GLO GENERAL LAND OFFICE
- B.T. BEARING TREE
- 🌲 BEARING TREE STUMP AS NOTED
- 🌳 BEARING TREE AS NOTED

NEW ACCESSORIES:

1. SET REBAR (SEE LEGEND) N37°46'59"E, 41.49 FEET AND 5 INCHES BELOW GROUND LEVEL.
2. SET REBAR (SEE LEGEND) S51°54'01"E, 17.28 FEET AND 5 INCHES BELOW GROUND LEVEL.
3. SET REBAR (SEE LEGEND) S50°34'17"W, 24.24 FEET AND 6 INCHES BELOW GROUND LEVEL.
4. D. FIR 6" DIA BEARS N64°17'W, 21.80 FEET TO CENTER, FACE SCRIBED "1/4 S31 BT". SET ALUMINUM NAIL AND PLASTIC WASHER IN SOUTHWESTERLY BASE FOR DISTANCE MEASUREMENT.

NOTES:

COMPASS DECLINATION IS 16° EAST. ALL MEASURED DISTANCES AND BEARINGS ARE TO THE CENTER OF THE OBJECT, UNLESS OTHERWISE NOTED. ALL BEARING TREES ARE PAINTED AND HAVE A B.T. TAG ATTACHED, FACING THE CORNER UNLESS OTHERWISE NOTED. ALL NEW BEARING TREES HAVE A PLASTIC WASHER (STAMPED "SURVEY MARKER DO NOT REMOVE") ATTACHED BY AN ALUMINUM NAIL TO THE SIDE CENTER OF THE TREE FOR DISTANCE MEASUREMENT, UNLESS OTHERWISE NOTED.

THIS RESTORATION WAS PERFORMED AT THE DIRECTION AND APPROVAL OF THE BENTON COUNTY SURVEYOR *JLW*

REGISTERED PROFESSIONAL LAND SURVEYOR

11/20/14 David L. Malone

FIRM/AGENCY: BENTON COUNTY SURVEYOR'S OFFICE
 ADDRESS: 360 S.W. AVERY AVE., CORVALLIS, OR 97333; PH. 541-766-6821
 PRESENT: DAVID L. MALONE, P.L.S. AND BERNARD ALTENBACH, SURVEY TECH.
 EQUIPMENT: NIKON NIVO3.C WITH SURVEY PRO ONBOARD.

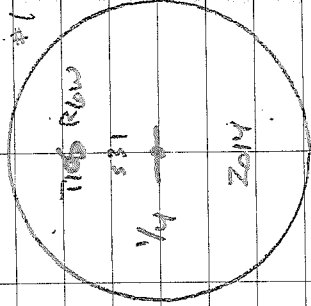
OREGON
 JANUARY 12, 1999
 DAVID L. MALONE
 51523

RENEWAL DATE: 12/31/14

106140100

REMONUMENT T 10 S ROW 5 1/4 SECTION 21

FD 3/4" IR W/ORANGE PLASTIC CAP INSIDE
 MARKED "LS 6065", UP 3". FD NE & NW
 GLO BT STUMPS, NELD 3/4" IR FOR CORNER
 AND PETERSON & ASSOCIATES CONTROL AND TIES
 TO GLO STUMPS, DRAVE IP DOWN SEVERAL
 INCHES AND OVER IP IN SAME HORIZONTAL
 POSITION DROVE 2" X 3 1/2" G.I.P. W/ 3 1/4"
 BRASS DISK CEMENTED IN THE TOP, UP 4".
 CORNER IS ON WEST EDGE OF SKID ROAD. FD
 WHITE FIBERGLASS POST WEST 10" OF NEW
 MONUMENT. SET 3 NEW IRON ROD ACCESSORIAL
 AND BLAZED AND SCREWED 1 NEW BEARING TREE,
 SET 6" ORANGE CAPSULE "SURVEY MARKER" POST
 10' EAST OF NEW MONUMENT.



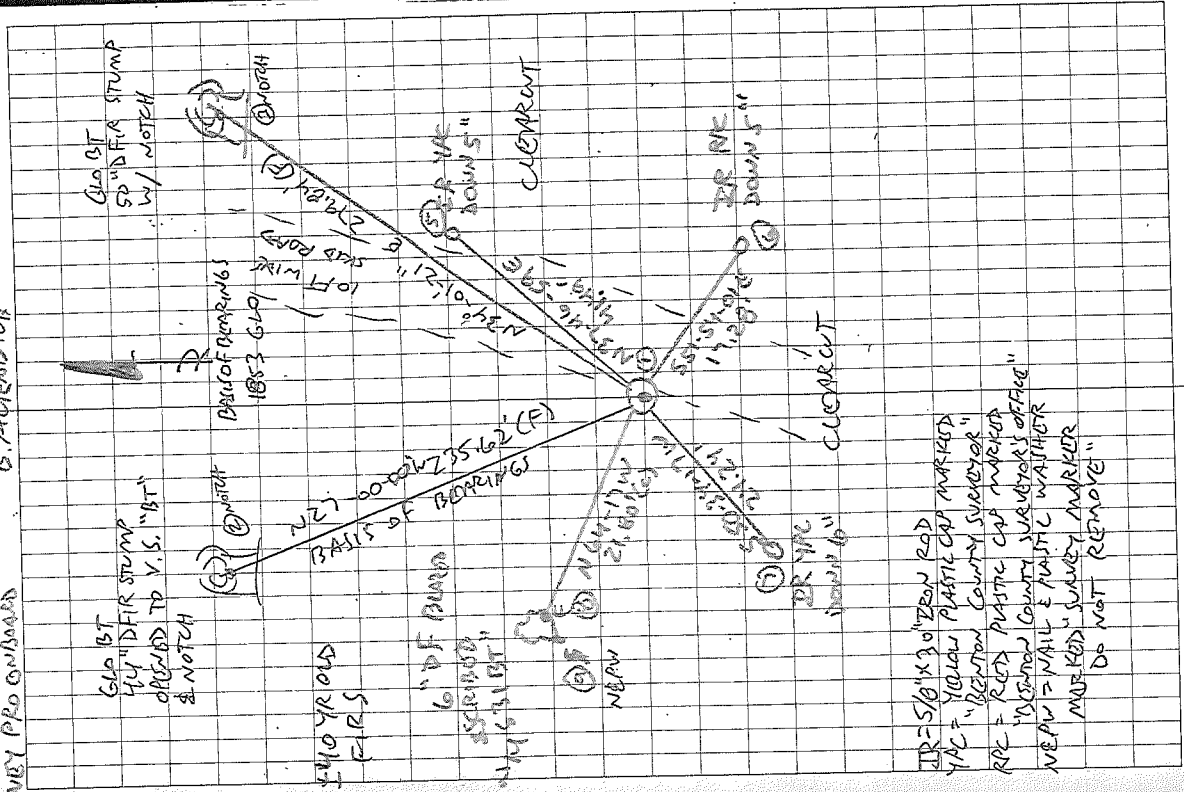
3-1/4" BRASS DISK

COAL, STUMPS

MILTON MARSH
SURVEY PROFESSIONAL

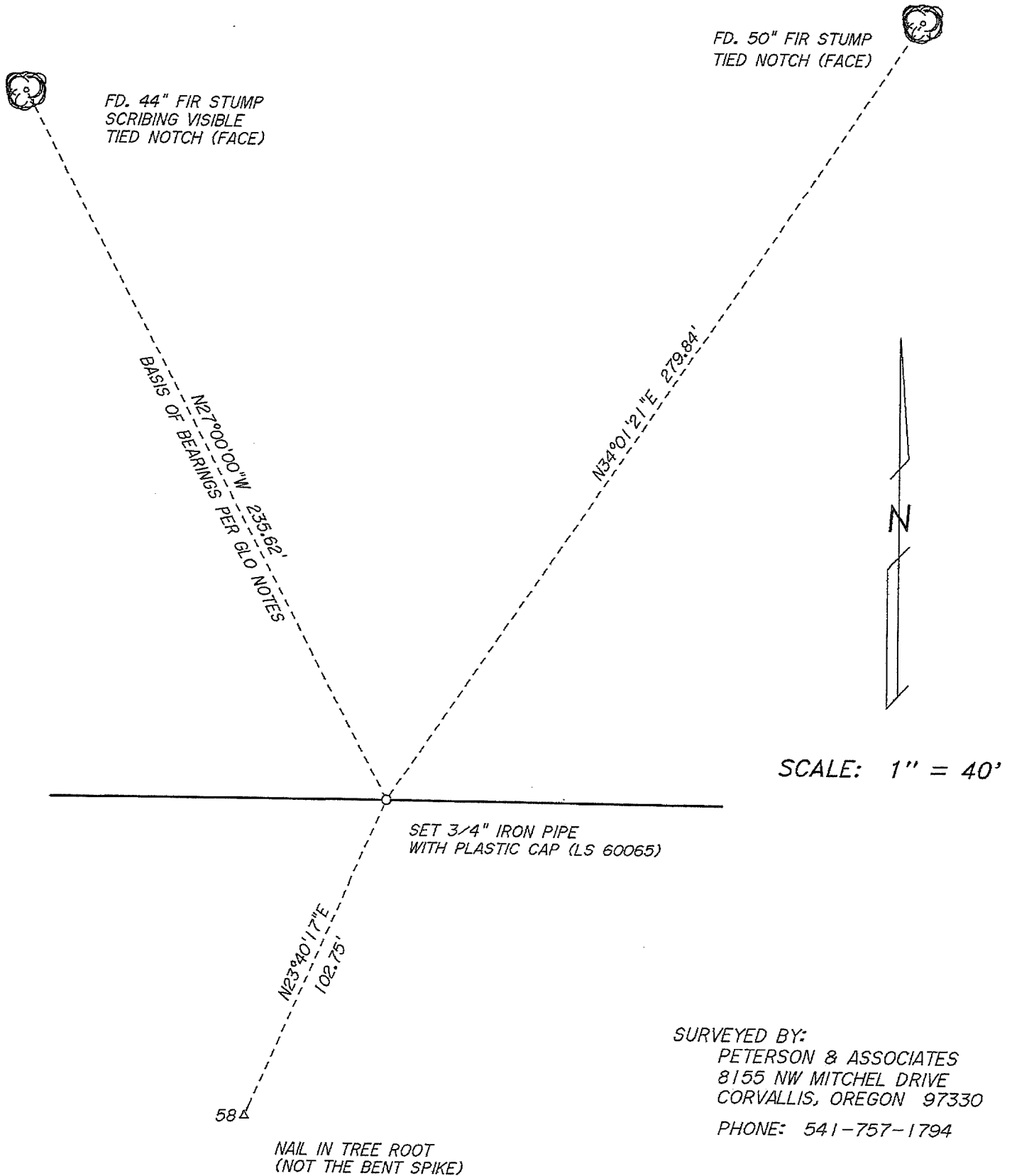
10/20/2014
D. MARSH
B. AUERBACH

30/9



IR = 5/8" x 30" IRON ROD
 YPC = YELLOW PLASTIC CAP MARKER
 RPL = RED PLASTIC CAP MARKER
 NEPW = NAIL & PLASTIC WASHER
 MOK = METAL SURVEY MARKER
 DO NOT REMOVE

S1/4 CORNER SECTION 31, T10S, R6W, W.M.



SURVEYED BY:
PETERSON & ASSOCIATES
8155 NW MITCHEL DRIVE
CORVALLIS, OREGON 97330
PHONE: 541-757-1794