

CORNER FILE TRACKING

H:\Survey\Corners\Misc\Filetrac.doc

11/23/98

CORNER NUMBER
106200500

STEP	HISTORY()	RESTORATION()
Form Prepared, DB	3/29/06	6/27/06
Field Inspection, DB	6/20/06	6/20/06
Form Checked, DB		
Form Edited, DB		
Form Signed, DB		
Counter Index	6/27/06	6/27/06
GIS Index	6/27/06	6/27/06
Authorize Payment, DB	—	—
Archive Digital Files		
Collect Documents	6/27/06	6/27/06
Scanned	7/10/06	7/10/06
Copy For Filming		
Filed, DB		
Finish index (count unit)	6/20/06	6/20/06
Filmed (Archived), DB		

(DB) = Entry needed in database (Access).

COMMENTS:

106200500

REMONUMENTATION 7/18
18/17 10-6CLEAR/MILD
LIECA TR/TDSB ALTENBACH
B. BOWSER

24/23

FD. 1 1/2" STEEL SHAFT 1" ABOVE GROUND
FOR CORNER POSITION. WE DRIVE THE SHAFT
BELOW GROUND LEVEL, AND DRIVE A
2" x 3 1/2" GALVANIZED IRON PIPE OVER
SHAFT. WE CEMENT A 3/4" BRASS
CAP, MARKED AS SHOWN, IN THE TOP
OF THE PIPE, FLUSH WITH THE
GROUND.

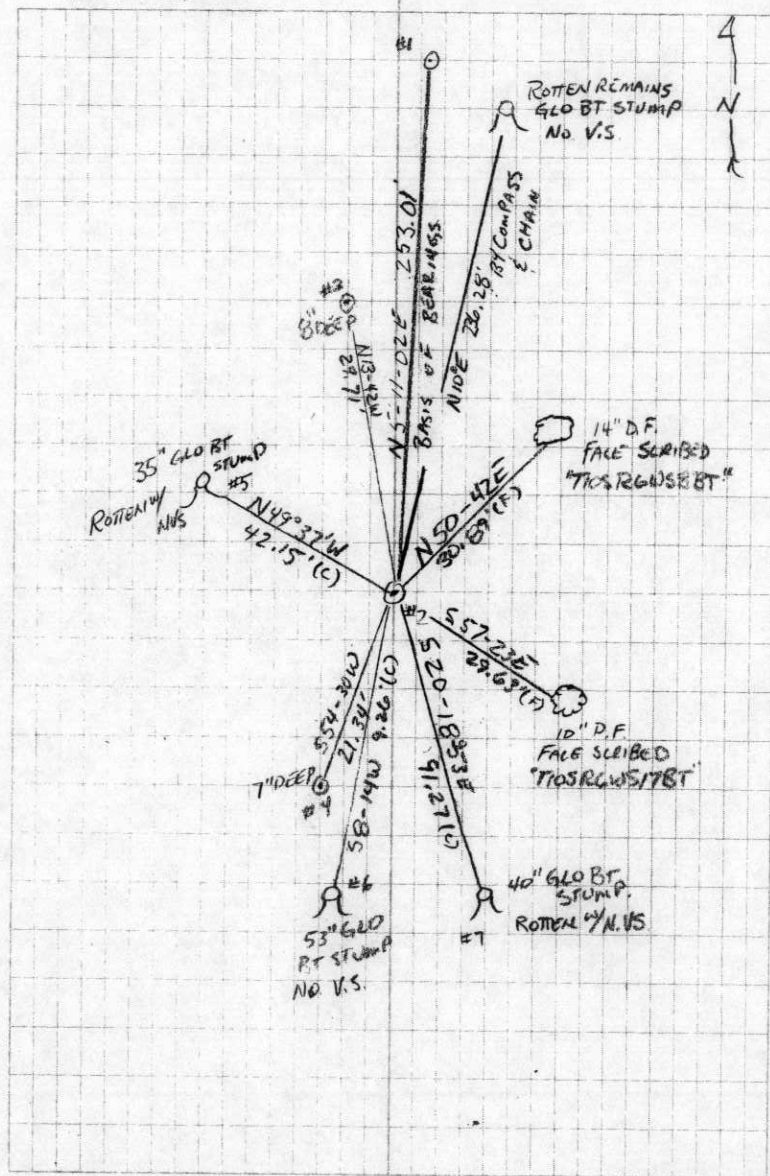
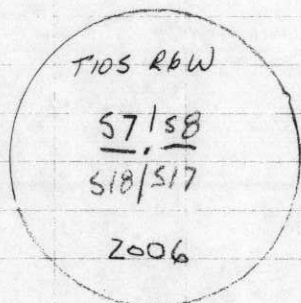
FD. THE NE GLO BT STUMP BY COMPASS AND
CHAIN. VERY ROTTEN WITH NO VISIBLE SCRIBES
FD. SE GLO BT STUMP, ROTTEN WITH NO VISIBLE
SCRIBES.

FD. SW GLO BT^{STUMP}, WITH NO VISIBLE SCRIBES.

FD. NW GLO BT STUMP, ROTTEN WITH NO
VISIBLE SCRIBES.

CORNER IN SWAMPY BOTTOM, APPROX 15' EAST
OF OLD DOWN WIRE FENCE.

6'
SET ORANGE CARSONITE
POST 0.5' EAST OF CORNER
POSITION.



DATE 03/29/2006TOWNSHIP 10 SOUTH, RANGE 06 WEST, WILLAMETTE MERIDIAN; SECTION 07 CORNER SOUTHEAST
DONATION LAND CLAIM N/A CORNER N/A**COMMON CORNER(S):**SOUTHWEST OF SECTION 8
NORTHWEST OF SECTION 17
NORTHEAST OF SECTION 18**RECORDS (INFORMATION IN *BOLD ITALICS* IS COUNTY STAFFS' INTERPRETATION OF THE RECORD)**BASED ON EXTENSIVE RESEARCH AND RECOVERY OF EVIDENCE, THIS OFFICE HAS DETERMINED THAT MOST GENERAL LAND OFFICE
SURVEYORS MEASURED TO THE FACE OF BEARING TREES

- [01] GENERAL LAND OFFICE (GLO) NOTES BY D. MURPHY, D.S., DATED NOVEMBER 30, 1853 SET A POST. MARKED A 9" FIR N10°E 358 LKS. (236.28 FT.), A 5" FIR S20°E 134 LKS. (88.44 FT.), A 12" FIR S10°W 14 LKS. (9.24 FT.) AND A 10" FIR N51 1/2°W 58 LKS. (38.28 FT.).
- [02] COUNTY SURVEY NO 616 (OLD NO 235) FIELD NOTES (BOOK 24, PAGE 56) BY B. WILKES, D.C.S., DATED NOVEMBER 18, 1917 SET A 1 1/2"X36" STEEL SHAFT WITH 8" CRANK ON BOTTOM. FOUND A 40" DOUBLE FIR (GLO BT) S20°E 1.34 CHS. (88.44 FT.) AND A 48" DOUBLE FIR (GLO BT) S10°W 0.14 CHS. (9.24 FT.), CHOPPED OUT TREE AND FIND ORIGINAL MARKS.
- [03] CORNER RESTORATION BOOK NO 1, PAGE 130 BY B. WILKES, D.C.S., DATED NOVEMBER 18, 1917 SET A 1 1/2"X36" STEEL SHAFT WITH AN 8" CRANK ON THE BOTTOM. FOUND A 40" FIR (GLO BT) N10°E 3.58 CHS. (236.28 FT.), A 40" DOUBLE FIR (GLO BT) S20°E 1.34 CHS. (88.44 FT.), A 48" DOUBLE FIR (GLO BT) S10°W 0.14 CHS. (9.24 FT.) AND A 36" DOUBLE FIR N54°W 0.58 CHS. (38.28 FT.).
- [04] CORNER RESTORATION NO 334 TRANSCRIBED FROM RECORD [03] AND MAY CONTAIN ERRORS AND/OR OMISSIONS.
- [05] COUNTY SURVEY NO 873 (OLD NO 235) BY B. WILKES, D.C.S., DATED DECEMBER 5, 1917 SET A 1 1/2"X36" STEEL SHAFT. FOUND A 40" FIR (GLO BT) N10°E 3.58 CHS. (236.28 FT.), A 40" DOUBLE FIR (GLO BT) S20°E 1.34 CHS. (88.44 FT.), A 48" DOUBLE FIR (GLO BT) S10°W 0.14 CHS. (9.24 FT.) AND A 36" DOUBLE FIR N54°W 0.58 CHS. (38.28 FT.).

NOTES

THIS IS A MICROSOFT WORD 2000 DOCUMENT NAMED "06200500" CREATED FROM A BOILER PLATE DOCUMENT NAMED "HISTORY", WHICH HAS A STYLESHEET NAMED "CORNER" ATTACHED TO IT

FIRM/AGENCY: BENTON COUNTY SURVEYOR'S OFFICE
ADDRESS: 360 S.W. AVERY AVE CORVALLIS OR 97333, PH 766-6821
RESEARCH BY: BERNARD S. ALTENBACH, ENGINEER/SURVEY TECH
DATA ENTRY BY: SAME

BENTON COUNTY CORNER RESTORATION FORM, PAGE 1 OF 2, 106200500R2**SEE CORNER HISTORY FORM FOR RECORDS ETC.**

CORNER RESTORATION FIELD BOOK NUMBER 24 PAGE(S) 23 DATE 06/20/2006
TOWNSHIP 10 SOUTH, RANGE 6 WEST, WILLAMETTE MERIDIAN; SECTION 7 CORNER SOUTHEAST
DONATION LAND CLAIM NONE CORNER N/A
CONDITION REPORT _____; REFERENCED OUT _____; RENEWED XX; SURVEYED IN _____

LOCATION AND COMMENTS:

CORNER IS LOCATED AT THE BASE OF A NORTH FACING SLOPE IN A SWAMPY BOTTOM AREA OF MATURE CONIFER TIMBER TO REACH CORNER FROM THE JUNCTION OF HIGHWAY 223 (KINGS VALLEY HIGHWAY) AND MAXFIELD ROAD, TRAVEL NORTHERLY ON HIGHWAY 223 FOR 0.93 MILES, THEN LEFT ON PRIVATE GRAVEL ROAD FOR ±300 FEET TO LOCKED GATE (E E TIMBER CO, PASS THROUGH GATE STAYING ON MAIN GRAVEL ROAD FOR 1.67 MILES, THEN LEFT ON SPUR ROAD (SMITH PLACE) FOR 0.19 MILES, THEN RIGHT AT 4 WAY JUNCTION FOR 0.24 MILES AND PARK, THEN NORTHERLY ON STEEP NORTH SLOPE FOR 200 FEET TO CORNER. CORNER IS POOR FOR PREMARKING AND GPS CONTROL.

MONUMENTS AND ACCESSORIES FOUND (CONDITION AND SOURCE):

- 1 FOUND 1 1/2" STEEL SHAFT (AXLE) 1" ABOVE GROUND LEVEL, UNDISTURBED AND FIRMLY SET FOR CORNER POSITION
(SET POST PER RECORD [01])
(SET STEEL SHAFT WITH 8" CRANK ON BOTTOM PER RECORDS [02] AND [03])
(SET 1 1/2" X 36" STEEL SHAFT PER RECORD [05])
- 2 FOUND ROTTEN REMAINS OF GLO BEARING TREE IS SECTION 8, N10°E, 236.3 FEET (BY COMPASS AND TAPE ONLY)
(9" FIR, N10°E, 236.28 FEET PER RECORD [01])
(FOUND 40" FIR, N10°E, 236.28 FEET PER RECORDS [03] AND [05])
- 3 FOUND 40" ROTTEN D FIR STUMP, S20°19'E, 91.27 FEET TO CENTER. STUMP IS MOSTLY HOLLOW, NO SCRIBING FOUND
(5" FIR, S20°E, 88.44 FEET PER RECORD [01])
(FOUND 40" DOUBLE FIR, S20°E, 88.44 FEET PER RECORDS [02], [03] AND [05])
- 4 FOUND 35" VERY ROTTEN D FIR STUMP, N49°38'W, 42.15 FEET TO CENTER. NO SCRIBING FOUND. THIS STUMP MAY BE THE UNMARKED "DOUBLE" AS RECOVERED PER RECORDS [03] AND [05]
(10" FIR, N51 1/2°W, 38.28 FEET PER RECORD [01])
(FOUND 36" DOUBLE FIR, N54°W, 38.28 FEET PER RECORDS [03] AND [05])
- 5 FOUND 53" ROTTEN D FIR STUMP WITH AXE WORK AND COVERED FACE, S8°14'W, 9.26 FEET TO CENTER
(12" FIR, S10°W, 9.24 FEET PER RECORD [01])
(48" DOUBLE FIR, S10°W, 9.24 FEET, CHOPPED OUT TREE AND FIND ORIGINAL MARKS PER RECORD [02]).
(48" DOUBLE FIR, S10°W, 9.24 FEET PER RECORDS [03] AND [05])
- 6 FOUND 3 1/4" BRASS DISK ON 2" GALVANIZED IRON PIPE AT 1/4 CORNER COMMON TO SECTIONS 7 AND 8, N0°24'21"E,
2627.59 FEET
(NORTH, 2640.00 FEET PER RECORD [01])

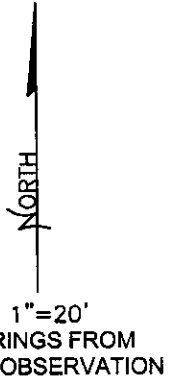
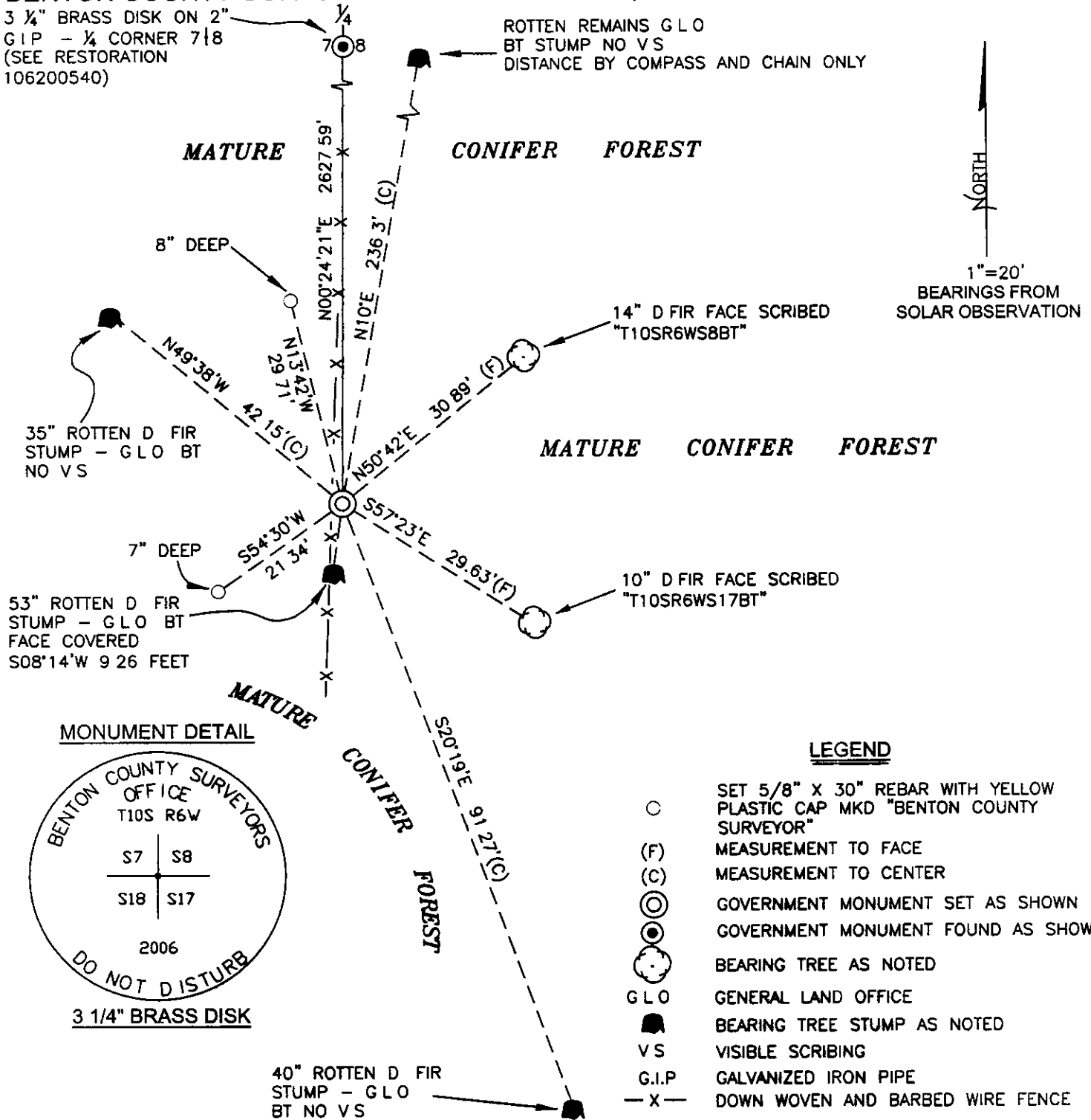
MONUMENT SET (PROCEDURES AND DESCRIPTION):

RECORD [02] RECOVERED ALL FOUR GLO BEARING TREE STUMPS AND OSTENSIBLY SET THE STEEL SHAFT FROM THE CLOSEST GLO ACCESSORY, BEING THE SECTION 18 BEARING TREE. OUR TIES TO THE FOUR RECOVERED GLO ACCESSORIES SHOW SOME DISCREPANCY IN DISTANCE AND BEARINGS COMPARED TO GLO RECORD. NONETHELESS, WE HAVE HELD THE MONUMENT SET PER RECORD [02] AS A GOOD FAITH EFFORT TO PERPETUATE THE SUBJECT CORNER.

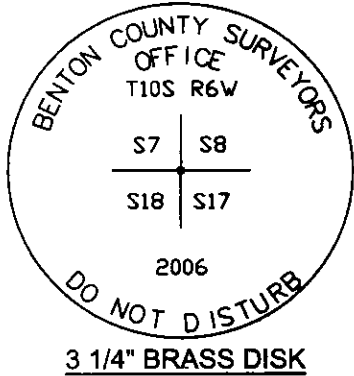
DROVE SAID STEEL SHAFT TO A POINT, 6" BELOW GROUND LEVEL. OVER SAID SHAFT, SET A 2" X 31.5" GALVANIZED IRON PIPE WITH A 3 1/4" BRASS DISK CONCRETED IN THE TOP, FLUSH WITH GROUND LEVEL AND MARKED AS SHOWN ON PAGE 2 OF 2. SET 6 FOOT ORANGE CARSONITE "SURVEY MARKER" POST 0.5 FEET EAST OF NEW MONUMENT.

3 1/4" BRASS DISK ON 2" GIP - 1/4 CORNER 718 (SEE RESTORATION 106200540)

ROTTEN REMAINS GLO BT STUMP NO VS DISTANCE BY COMPASS AND CHAIN ONLY



MONUMENT DETAIL



LEGEND

- SET 5/8" X 30" REBAR WITH YELLOW PLASTIC CAP MKD "BENTON COUNTY SURVEYOR"
- (F) MEASUREMENT TO FACE
- (C) MEASUREMENT TO CENTER
- ⊙ GOVERNMENT MONUMENT SET AS SHOWN
- ⊙ GOVERNMENT MONUMENT FOUND AS SHOWN
- ⊙ BEARING TREE AS NOTED
- GLO GENERAL LAND OFFICE
- BT BEARING TREE STUMP AS NOTED
- VS VISIBLE SCRIBING
- G.I.P GALVANIZED IRON PIPE
- X- DOWN WOVEN AND BARBED WIRE FENCE

NEW ACCESSORIES

- 1 SET REBAR (SEE LEGEND) 8" BELOW GROUND LEVEL N1342'W, 29 71 FEET
- 2 SET REBAR (SEE LEGEND) 7" BELOW GROUND LEVEL S5430'W, 21 34 FEET.
- 3 FACE SCRIBED 10" D FIR, S57'23"E 29 63 FEET TO FACE AND MARKED "T10SR6WS17BT." SET ALLUMINUM NAIL AND PLASTIC WASHER IN BOTTOM OF BLAZE BELOW SCRIBING FOR DISTANCE AND ANGLE MEASUREMENT
- 4 FACE SCRIBED 14" D FIR N50'42"E 30 89 FEET, TO FACE AND MARKED "T10SR6WS8BT" SET ALLUMINUM NAIL AND PLASTIC WASHER IN BOTTOM OF BLAZE BELOW SCRIBING FOR DISTANCE AND ANGLE MEASUREMENT

NOTES

COMPASS DECLINATION IS 20° EAST ALL MEASURED DISTANCES AND BEARINGS ARE TO THE CENTER OF THE OBJECT, UNLESS OTHERWISE NOTED ALL BEARING TREES ARE PAINTED AND HAVE A BT TAG ATTACHED, FACING THE CORNER UNLESS OTHERWISE NOTED ALL NEW BEARING TREES HAVE A PLASTIC WASHER (STAMPED "BENTON COUNTY SURVEYOR CORNER RESTORATION") ATTACHED (BY ALUMINUM NAIL) TO THE FACE, BELOW THE "BT" FOR DISTANCE AND ANGLE MEASUREMENT UNLESS OTHERWISE NOTED THE DRAWING IS FROM AUTOCAD RELEASE 2006

THIS RESTORATION WAS PERFORMED AT THE DIRECTION AND APPROVAL OF THE BENTON COUNTY SURVEYOR, *[Signature]*

FIRM/AGENCY BENTON COUNTY SURVEYOR'S OFFICE
 ADDRESS 360 SW AVERY AVE CORVALLIS OR 97333, PH 766-6821
 PRESENT DAVID M DEAN PLS, BERNIE ALTENBACH AND BRAD BOWSHER SURVEY TECHS.
 EQUIPMENT LEICA TCR 1105 TOTAL STATION W/TDS ON BOARD.

7/706

REGISTERED PROFESSIONAL LAND SURVEYOR

David M. Dean
 OREGON
 JULY 13, 1984
 DAVID M. DEAN
 2090

RENEWAL DATE: 12/31/07

CS No 227 Cont. The Corner of Secs 7, 12, 15 + 18 W 1/4 1/4 NW 1/4 1/4 W

Set 1 1/2" X 36 Steel Shaft For Cor. 11' in Which

" Fir 17 in diam bears N 61° E 14 1/4 dist (ump in 50 1/2° E)

" Fir 18 " " S 40° E 12 " Dry Tree

" Fir 16 " " S 2° W 03 " "

" Fir " " N 40° W .03 " "

Fir 20 " " N 1° W .169 " "

Fir 30 " " N 53 1/2° E " "

Witnessed by W.S. Alcorn, D.R. Kibbey, Jas Watson

Nov 16, 1917

" The 1/4 Sec Cor between Secs 7 + 18 - T 10 S R 6 W

Set plow shear 15' under surface for Cor from which

Oak 12 in diam bears N 42 1/2° E 1013 Chs dist

Oak 8 " " N 79 1/2° E 1080 " "

Witnessed by W.S. Alcorn - Jas Watson

Nov 29, 1917

CS No 235

The Corner of Sections 7, 8, 17 + 18, T 10 S, R 6 W

Set 1 1/2" X 36 Steel Shaft with a Crank on bottom for Cor from which

" Double Fir 12" (40) in diam bears S 10° W 140 Chs dist " Big Tree

" " Fir 10" (40) " " N 51 1/2° W (90) 58 " "

" " Fir 10" (40) " " N 10° E 358 " "

" " " 5" (40) " " S 20° E 134 " "

Witnessed by W.S. Alcorn, D.R. Kibbey, Jas Watson, W.H. Smith & Sons, Chas. Orville

Nov 18, 1917

" The 1/4 Sec Cor between Secs 17 + 18 T 10 S R 6 W

Set 1 1/2" X 40 Steel Shaft for Cor from which

Oak 8' in diam bears S 87° W 15 - 0-3 Tree L-2-2

" 8 " " N 86° E 27 (37) 300

Fir 30 " " N 80 1/2° E 1233 Chs dist - Slope not noted

Fir 30 " " N 80 1/2° W 1423 " "

Witnessed by W.S. Alcorn, Jas Watson, D.R. Kibbey, Nov 18, 1917

" The 1/4 Sec Cor between Sections 8 + 17 - T 10 S R 6 W

Set 1 X 30" Steel rod - tapered - for Cor from which

Oak 14" in diam bears N 60° E 9' " " " " (and)

Oak 12" " " S 8 1/2° E 117 1/2 " "

Fir 30 " " S 53 1/2° W 409 " "

White Fir 26" " " N 14 1/2° W 334 " "

Present W.S. Alcorn, Jas Watson, D.R. Kibbey, W.H. Smith & Sons, Nov 21, 1917

10-6-7, 8, 12/8

Corner of Sections 7, 8, 17, and 18, Twp. 10 S., R. 6 W.

531 5

Reestablishment by Burt Wilkes

November 18, 1917

Set 1 1/2" x 36" steel shaft with 8" crank on bottom

Double Fir 12" in diam bears S 10° W

.140 chains

Fir (Double 10" in diam bears N 51 1/4° W

.58 chains

Fir 10" in diam bears N 10° E

3.58 chains

Double Fir 5" in diam bears S 20° E

1.34 chains

Witnessed by W. S. Alcorn, D. R. Kibby James Watson, W.H. Smith and Sons