

106279565

POLK COUNTY CORNER RESTORATION FORM

SECTION 8 TOWNSHIP 10 S RANGE 6 W W.M. BLM ID 279565

DLC _____ CORNER County Line Monument

DATE 5/20/2011 CORNER RESTORATION FIELD BOOK 200-12 PAGE 18

PREVIOUS RENEWALS / SURVEYS, ETC.

CS 13513, 13943, 15402, 15524; OSHD 1R-2-1280,
OSHD 1B-5-15; Benton County Surveys CS 4306,
5586, 9425

_____ CONDITION REPORT
_____ RENEWED
X UNRECORDED

MONUMENT AND ACCESSORIES FOUND (CONDITION AND SOURCE)

I found an angle iron with a pointed top. The angle iron is of unknown origin and is located S85°W, 1.05' from a typical County Line Concrete Post. The post is located on the west side of Kings Valley Hwy (OSH 223). The post is 3.5' high, 10" square at the base and 7" square at the top. The post is engraved "POLK", "BENTON" and "CO LINE". On north-south roads said post were typically set within 2' of, and either east or west of previously established County Line Monuments. OSHD 1B-5-15, dated 1924, calls for a bolt as a monument. I searched for but did not find the bolt. OSHD 1B-5-15 also shows: 1) the County Line intersecting the centerline of OSH 223 at STA. 483+00.32 and; 2) 107° 41' as the angle created by the intersection of the County line with the road right-of-way. I retraced OSHD 1B-5-15 and CS 13943 (Benton Co Survey 9425). I held both the angle iron and the given angle of 107° 41' and my calculated centerline station for the County Line is STA. 482+99.32 (0.98' southerly of record). See my survey CS 15524 for more complete details. The findings indicate the angle iron is the best evidence of the County Line. As such, both the Polk and Benton County Surveyor's accepted the angle iron as a County Line Monument.

MONUMENT SET (PROCEDURES AND DESCRIPTION)

I removed the angle iron and in its place set a 2" X 30" iron pipe with 2 1/2" brass cap up 3". I layed the angle iron beside the new monument.

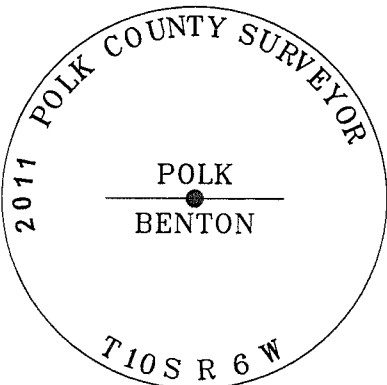
NEW ACCESSORIES

- Power Pole No. D230; S6°E, 62.85' to nail and washer 1' up on right; set a witness tag.
 - 6" X 6" post with "Welcome to Polk County" and "Welcome to Benton County" signs bears east, 3.6'.
 - Set carsonite post 2' west.
- State Plane Coordinate (ORGN 83/96 (2002) in Int'l Feet)
N= 398194.13 ft
E= 7438465.80 ft

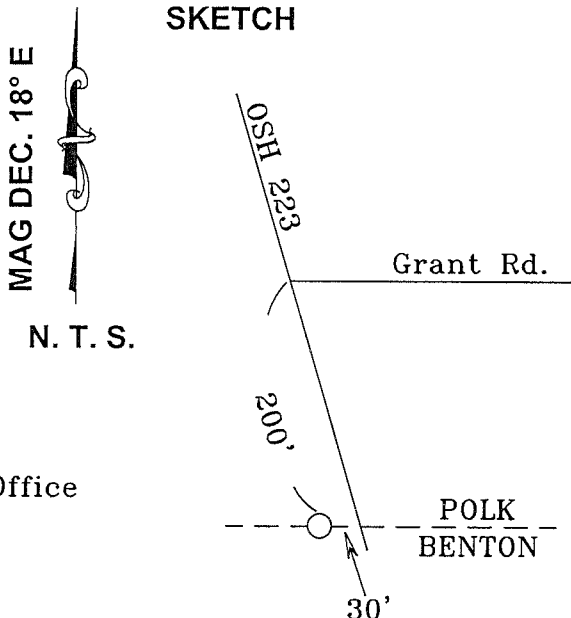
NOTES

The state plane coordinates given for this point are the result of ties made during the survey for county project 1021, point #119.
See project file for more information.

MONUMENT DETAIL



SKETCH



RESTORATION NO.
11898

REGISTERED
PROFESSIONAL
LAND SURVEYOR

Eric T. Berry
OREGON
JANUARY 15 2002
ERIC T BERRY
61392

FIRM / AGENCY

Polk County Surveyors Office
820 S.W. Ash St.
Dallas, Oregon 97338
(503) 623-9287

WITNESS Jim Killian, Roger Ray