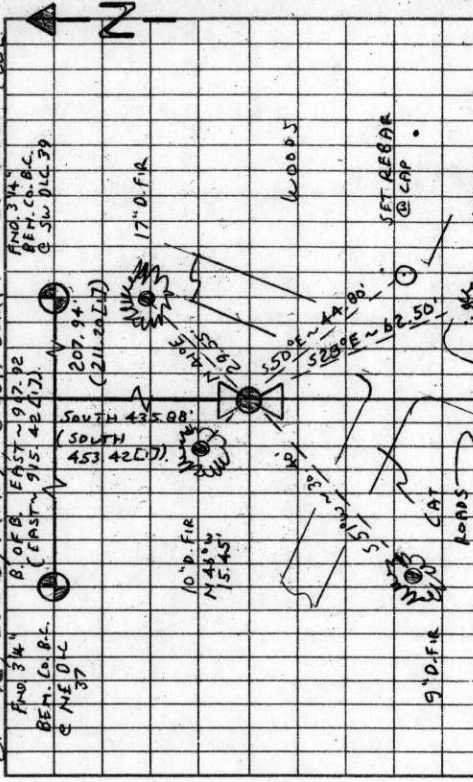


12/11
CLOY.

2/13/92. CILVA MEAD SILVA Comp 20° DEC
CLOY.



A D. FIR 10" IN DIAM. BEARS N 40° W ~ 15.45', FACED & SCRIBED "1/4 S 32 BT". SET A PK & BCBW IN THE NE 1/4 BASE SET A BT TAG ON THE SE 1/4 FACE.

SET: CHANGE FIBERGLASS "SURVEY STAKE" POST 1' S 1/4 THE COR IS LOCATED ON A HEAVILY WOODED (SOON TO BE CLEAR CUT) GENTLY SLOPING W 1/4 FACING HILLSIDE, 80' S 1/4 FROM THE S 1/4 EDGE OF A MEADOW & 125' E 1/4 FROM A SMALL UNNAMED CREEK TO FINE FOLLOW THE 1ST GRV. RD. S. OF 37574 KING'S VALLEY HWY. NW 1/4 FOR 0.25 MI. TO END THEN FOLLOW DIRT RD. W 1/4 & SW FOR 900' COR IS 75' S W 1/4.

IT IS POOR FOR PRE MARKING CAP STAMPINGS S32-337
4 GRS CONTROL

T105 R6W SEC. 32 E 1/4 COR.

FIND: A DOWNED OAK 18" IN DIAM. LYING IN A N 1/4 DIRECTION

THE CENTER OF THE ROOT HOLE BEARS S 50° E ~ 44.8' (14' S 50° E ~ 44.80' BELIEVED TO BE THE AREA AS PER 77).
V SET A B.T. TAG ON THE BASE OF THE DOWNED TREE.

NO OTHER RECORD BEARING OBJECTS WERE RECOVERED.

SET: 2" ID. x 36" LONG IRON PIPE @ A 3' 1/4 BEM CO. B.C., STAMPED AS SHOWN, AT RECORD BEARING & DISTANCE FROM THE RECOVERED S.E. BT. THIS POSITION WAS USED BECAUSE IT FIT WITHIN REASONABLE LIMITS @ (462.640)

THE TPO CALL TO THE STREAM 450' SOUTH AND THE PASSING CALLS FOR THE D.C.C.'S TO THE N.

A D. FIR 7" IN DIAM. BEARS N 41° E ~ 29.55', FACED & SCRIBED "1/4 S 33 BT". SET A PK & BCBW IN THE SE 1/4 BASE. SET A BT TAG ON THE SW 1/4 FACE.

SET: 5/8" x 30" REBAR @ A Y.A.C. MKD. "BENTON COUNTY SURVEYOR" IN THE CTR. OF THE ROOT HOLE LEFT WHEN THE USE BT FELL OVER THE CAP BEARS S 50° E ~ 44.80'.

A D. FIR 9" IN DIAM. BEARS S 51° W ~ 30.40', FACED & SCRIBED "1/4 S 32 BT". SET A PK & BCBW IN THE SE 1/4 BASE SET A BT TAG ON THE NE 1/4 FACE.

A D. FIR 18" IN DIAM. BEARS S 120° E ~ 62.50', FACED & SCRIBED "1/4 S 33 BT". SET A PK & BCBW IN THE NE 1/4 BASE. SET A BT TAG ON THE NW 1/4 FACE.

2.66 NE
3.19 NW

T105 R6W 1/4
1992

BENTON COUNTY CORNER RESTORATION FORM

4029

106300140

TOWNSHIP 10 SOUTH, RANGE 6 WEST, WILLAMETTE MERIDIAN; SECTION 32 CORNER E 1/4

DONATION LAND CLAIM _____ CORNER _____

DATE 2/13/92 CORNER RESTORATION FIELD BOOK NUMBER 12 PAGE(S) 11

_____CONDITION REPORT ONLY____; _____REFERENCED OUT____; XX RENEWED____; _____SURVEYED IN_____

LOCATION AND COMMENTS:

THE CORNER IS LOCATED ON A HEAVILY WOODED (SOON TO BE CLEAR CUT) GENTLY SLOPING, WESTERLY FACING HILLSIDE, APPROXIMATELY 80 FEET SOUTHERLY FROM THE SOUTHERLY EDGE OF A MEADOW AND APPROXIMATELY 125 FEET FROM A SMALL UNNAMED CREEK. TO FIND FOLLOW THE FIRST GRAVEL ROAD SOUTH OF 37574 KINGS VALLEY HIGHWAY NORTHWEST AND WEST FOR 0.25 MILES TO THE END THEN FOLLOW THE DIRT ROAD WESTERLY AND SOUTHWEST FOR APPROXIMATELY 900 FEET, THE CORNER IS APPROXIMATELY 75 FEET SOUTHWESTERLY.

PREVIOUS RENEWALS/SURVEYS, ETC:

[01] ORIGINAL GLO SURVEY BY DANIEL MURPHY DATED SEPTEMBER 22, 1854.

MONUMENTS AND ACCESSORIES FOUND (CONDITION AND SOURCE):

FOUND: A DOWNED OAK 18" IN DIAMETER LYING IN A NORTHERLY DIRECTION. THE CENTER OF THE ROOT HOLE BEARS S 50° E 44.8 FEET (14" S 50° E 44.80 FEET BELIEVED TO BE FACE MEASURE AS PER [1]). SET A B.T. TAG ON THE BASE OF THE DOWNED TREE.

NO OTHER RECORD BEARING OBJECTS WERE RECOVERED.

MONUMENT SET (PROCEDURES AND DESCRIPTION):

SET: 2" INSIDE DIAMETER X 36" LONG IRON PIPE WITH A 3 1/4" BENTON COUTY BRASS CAP, STAMPED AS SHOWN, AT RECORD BEARING AND DISTANCE FROM THE RECOVERED SOUTHEAST BEARING TREE. THIS POSITION WAS USED BECAUSE IT FIT WITHIN REASONABLE LIMITS WITH THE TOPOGRAPHIC CALL TO THE STREAM 450' (462' GLO) SOUTH AND THE PASSING CALLS FOR THE DONATION LAND CLAIM CORNERS TO THE NORTH.

NEW ACCESSORIES:

A DOUGLAS FIR 17" IN DIAMETER, BEARS N 41° E 29.55 FEET, FACED AND SCRIBED "1/4 S 33 BT". SET A PK NAIL AND B.C.B.W. IN THE SOUTHEASTERLY BASE. SET A B.T. TAG ON THE SOUTHWESTERLY FACE.

SET: 5/8" X 30" REBAR WITH A YELLOW PLASTIC CAP MARKED "BENTON COUNTY SURVEYOR" IN THE CENTER OF THE ROOT HOLE LEFT WHEN THE ORIGINAL SOUTHEAST BT FELL OVER. THE CAP BEARS S 50° E 44.80 FEET.

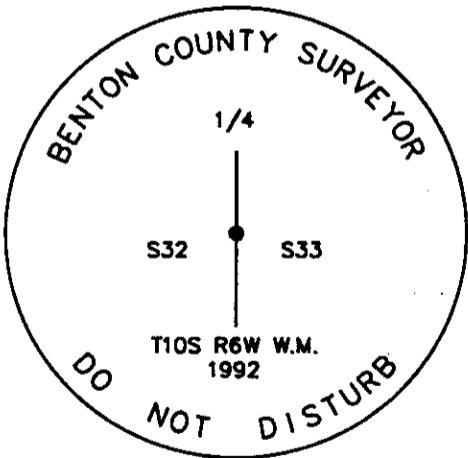
A DOUGLAS FIR 9" IN DIAMETER, BEARS S 51° W 30.40 FEET, FACED AND SCRIBED "1/4 S 32 BT". SET A PK NAIL AND B.C.B.W. IN THE SOUTHEASTERLY BASE. SET A B.T. TAG ON THE NORTHEASTERLY FACE.

A DOUGLAS FIR 18" IN DIAMETER, BEARS S 28° E 62.50 FEET, FACED AND SCRIBED "1/4 S 33 BT". SET A PK NAIL AND B.C.B.W. IN THE NORTHEASTERLY BASE. SET A B.T. TAG ON THE NORTHWESTERLY FACE.

A DOUGLAS FIR 10" IN DIAMETER, BEARS N 46° W 15.45 FEET, FACED AND SCRIBED "1/4 S 32 BT". SET A PK NAIL AND B.C.B.W. IN THE NORTHEASTERLY BASE. SET A B.T. TAG ON THE SOUTHEASTERLY FACE.

SET: ORANGE FIBERGLASS "SURVEY STAKE" POST 1 FOOT SOUTHERLY.

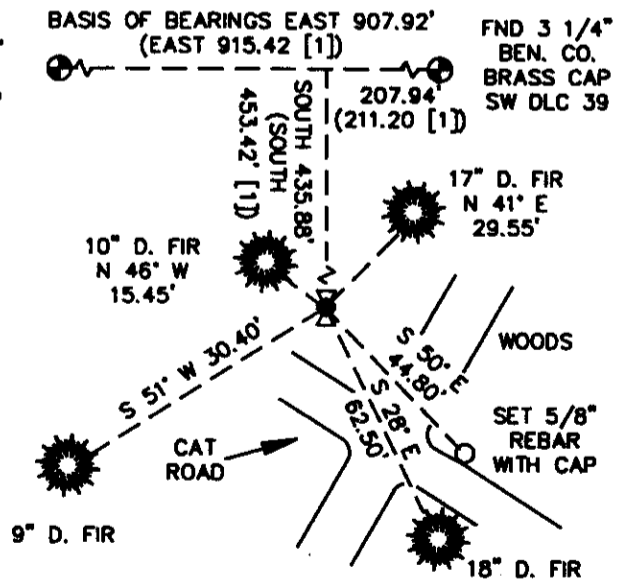
MONUMENT DETAIL



3 1/4" BRASS CAP



SKETCH



NOTES:

B.C.B.W. IS A BRASS WASHER STAMPED "BENTON COUNTY SURVEYOR". COMPASS DECLINATION IS 20° EAST. ALL MEASURED DISTANCES AND COMPASS BEARINGS ARE TO THE CENTER OF THE OBJECT, UNLESS OTHERWISE NOTED.

THIS RESTORATION WAS PERFORMED AT THE DIRECTION AND APPROVAL OF THE BENTON COUNTY SURVEYOR. *[Signature]*

**REGISTERED
PROFESSIONAL
LAND SURVEYOR**

Curtis J. Liesenfelt

**OREGON
JULY 17, 1986
CURTIS J. LIESENFELT
2213**

FIRM/AGENCY: BENTON COUNTY SURVEYOR
ADDRESS: 360 S.W. AVERY AVE. CORVALLIS OR 97333; PH. 757-6821
SURVEY CREW: CURTIS J. LIESENFELT/MARK E. ANDERSON
WITNESS: REID GIESY