

106400140

CORNER FILE TRACKING

S:\Survey Corners\CORNERS\Templates\Filetrac2.doc
10/04/2010

CORNER NUMBER
106400140

STEP	HISTORY	RESTORATION
Form Prepared, DB	12/23/13	2/14/24
Field Inspection, DB	2/06/24	2/06/24
Finish index (count unit)	12/23/13	2/06/24
Counter Index	2/07/24	2/07/24
GIS Index Form	2/12/24	2/12/24
Checked, DB	2/20/24	2/20/24
Form Edited, DB	6/06/24	6/06/24
Form Signed, DB	6/06/24	6/06/24
Authorize Payment, DB	—	—
Archive Digital Files	6/06/24	6/06/24
Collect Documents	6/06/24	6/06/24
PDF File	6/17/24	6/17/24
Copy For Filming	6/06/24	6/06/24
Scanned (pdf to laserfiche)	6/17/24	6/17/24
Filmed (Archived), DB		
Filed, DB		

(DB) = Entry needed in database (Access).

COMMENTS:

DATE 12/23/2013TOWNSHIP 10 SOUTH, RANGE 6 WEST, WILLAMETTE MERIDIAN; SECTION 33 CORNER EAST 1/4
DONATION LAND CLAIM N/A CORNER N/A**COMMON CORNER(S):**

WEST 1/4 CORNER SECTION 34

RECORDS (INFORMATION IN BOLD ITALICS IS COUNTY STAFFS' INTERPRETATION OF THE RECORD)

BASED ON EXTENSIVE RESEARCH AND RECOVERY OF EVIDENCE, THIS OFFICE HAS DETERMINED THAT MOST GENERAL LAND OFFICE SURVEYORS IN BENTON COUNTY BEFORE 1890 MEASURED TO THE FACE OF BEARING TREES.

- [01] GENERAL LAND OFFICE (GLO) NOTES BY DANIEL MURPHY, D.S., DATED DECEMBER 1, 1853. *DEPOSITED 2 ROCKS 4" X 6" X 4", RAISED MOUND WITH TRENCH AS PER INSTRUCTIONS.*
- [02] BENTON COUNTY SURVEY NO. 1024 (OLD NO. 352) FIELD NOTES (FIELD BOOK 36, PAGE 30) BY W. C. GALLOWAY, C.S., DATED APRIL 27, 1927. *BY PROPORTIONATE MEASURE SET FORD AXLE. OAK 6" DIA BEARS S53°15'W, 0.446 CHAINS (29.44 FEET); OAK 8" DIA BEARS N30°W, 0.875 CHAINS (57.75 FEET).*
- [03] BENTON COUNTY CORNER RESTORATION BOOK NO. 1, PAGE 185, BY W. C. GALLOWAY, C.S., DATED MAY 2, 1927. *SET FORD AXLE. SET PROPORTIONAL DISTANCE ON LINE. OAK 6" DIA (CSBT) BEARS S53°15'W, 0.446 CHAINS (29.44 FEET) TO CENTER; OAK 8" DIA (CSBT) BEARS N30°W, 0.875 CHAINS (57.75 FEET) TO CENTER.*
- [04] BENTON COUNTY CORNER RESTORATION NO. 388. *TRANSCRIBED FROM RECORD [03] AND MAY CONTAIN ERRORS AND/OR OMISSIONS.*
- [05] BENTON COUNTY MAP NO. 10-6-00016, NO DATE OR DRAFTSMAN GIVEN. *FORD AXLE. OAK 6" DIA (CSBT) BEARS S53-1/4°W, 0.446 CHAINS (29.44 FEET); OAK 8" DIA (CSBT) BEARS N30°W, 0.875 CHAINS (57.75 FEET).*
- [06] BENTON COUNTY SURVEY NO. 9412 BY JIM S. PETERSON, P.L.S., DATED FEBRUARY 25, 1997. *FOUND 1" AXLE. ROTTED OAK REMAINS (CSBT) BEARS S53-1/4°W, 0.446 CHAINS (29.44 FEET); FIR SNAG 7" DIA BEARS WEST, 10.4 FEET, FOUND TAG ON TREE; FIR 10" DIA BEARS S15°W, 14.0 FEET, HEALED FACE AND CRUISERS MARK; FIR 24" DIA BEARS S7°W, 17.9 FEET, MARKED "1/4 S33 BT"; FIR 10" DIA BEARS S68°E, 10.5 FEET, MARKED "1/4 S34 BT". CORNER LIES ON SOUTH EDGE OF CLEARCUT.*

FIRM/AGENCY: BENTON COUNTY SURVEYOR'S OFFICE
ADDRESS: 360 S.W. AVERY AVE., CORVALLIS, OR 97333; PH. 766-6821
RESEARCH BY: DAVID L. MALONE, P.L.S.
DATA ENTRY BY: SAME

BENTON COUNTY CORNER RESTORATION FORM, PAGE 1 OF 2, 106400140R2

SEE CORNER HISTORY FORM FOR RECORDS ETC.

CORNER RESTORATION FIELD BOOK NUMBER 34 PAGE(S) 53 DATE 02/06/2024
TOWNSHIP 10 SOUTH, RANGE 6 WEST, WILLAMETTE MERIDIAN; SECTION 33 CORNER EAST 1/4
DONATION LAND CLAIM N/A CORNER N/A
CONDITION REPORT ; REFERENCED OUT ; RENEWED X; SURVEYED IN

LOCATION AND COMMENTS:

THE CORNER IS LOCATED ON A MODERATE WEST-NORTHWEST FACING SLOPE WITH ±25 YEAR OLD D. FIR TO THE NORTH AND RECENTLY THINNED ±70 YEAR OLD D. FIR TO THE SOUTH WITH SCATTERED HARDWOODS. TO REACH CORNER FROM THE INTERSECTION OF HOSKINS ROAD AND KINGS VALLEY HIGHWAY, TRAVEL SOUTH ON KINGS VALLEY HIGHWAY FOR 0.30 MILES TO A ROAD APPROACH ON THE LEFT, TURN LEFT AND FOLLOW MAIN ROAD FOR 0.80 MILES TO A WYE, TURN RIGHT FOR 0.31 MILES TO A WYE, STAY LEFT FOR 0.13 MILES TO A WYE, TURN RIGHT FOR 0.36 MILES TO A WYE, TURN RIGHT FOR 0.11 MILES TO END OF ROAD AND PARK. WALK ABOUT 200 FEET SOUTHEAST TO THE CORNER. CORNER IS BAD FOR PREMARKING AND GPS CONTROL.

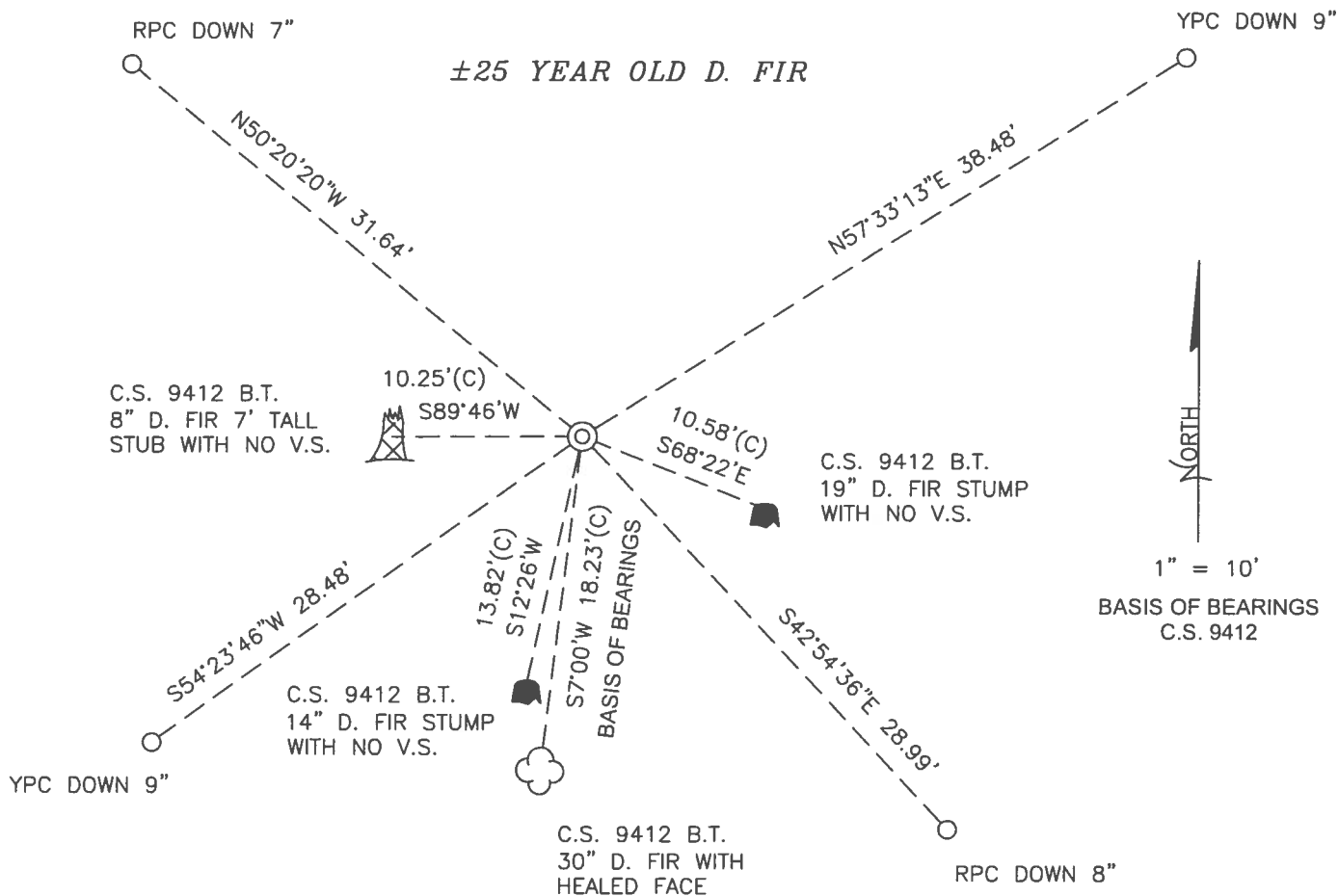
MONUMENTS AND ACCESSORIES FOUND (CONDITION AND SOURCE):

1. FOUND 1-1/8" AXLE, FIRMLY SET AND UNDISTURBED, UP 4" ABOVE GROUND SURFACE, WITH STONES AROUND IT, FOR THE CORNER.
(DEPOSITED 2 ROCKS 4" X 6" X 4", RAISED MOUND WITH TRENCH AS PER RECORD [01]).
(BY PROPORTIONATE MEASURE SET FORD AXLE AS PER RECORD [02]).
(SET FORD AXLE. SET PORPORTIONAL DISTANCE ON LINE AS PER RECORD [03]).
(FORD AXLE AS PER RECORD [05]).
(FOUND 1" AXLE AS PER RECORD [06]).
2. FOUND D. FIR 30" DIA WITH HEALED FACE BEARS S7°00'W, 18.23 FEET TO CENTER. **HELD FOR BASIS OF BEARINGS FOR THIS RESTORATION.** SET ALUMINUM NAIL AND PLASTIC WASHER IN WESTERLY BASE FOR DISTANCE MEASUREMENT.
(FIR 24" DIA BEARS S7°W, 17.9 FEET, MARKED "1/4 S33 BT" AS PER RECORD [06]).
3. FOUND D. FIR STUMP 14" DIA WITH NO VISIBLE SCRIBING BEARS S12°26'W, 13.82 FEET TO CENTER.
(FIR 10" DIA BEARS S15°W, 14.0 FEET, HEALED FACE AND CRUISERS MARK AS PER RECORD [06]).
4. FOUND D. FIR STUMP 19" DIA WITH NO VISIBLE SCRIBING BEARS S68°22'E, 10.58 FEET TO CENTER.
(FIR 10" DIA BEARS S68°E, 10.5 FEET, MARKED "1/4 S34 BT" AS PER RECORD [06]).
5. FOUND 7' TALL D. FIR STUB 8" DIA WITH NO VISIBLE SCRIBING BEARS S89°46'W, 10.25 FEET TO CENTER.
(FIR SNAG 7" DIA BEARS WEST, 10.4 FEET AS PER RECORD [06]).

MONUMENT SET (PROCEDURES AND DESCRIPTION):

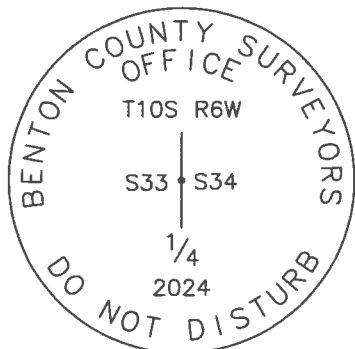
FOUND 1-1/8" AXLE, FIRMLY SET AND UNDISTURBED, UP 4" ABOVE GROUND SURFACE, WITH STONES AROUND IT, FOR THE CORNER. THE AXLE WAS SET IN 1927 BY W. C. GALLOWAY, C.S., BY PROPORTIONATE MEASUREMENT, AND HAS BEEN HELD FOR THE CORNER TO SUBDIVIDE SECTIONS AND MARK BOUNDARY LINES EVER SINCE. THE AXLE IS ACCEPTED AS THE REESTABLISHMENT OF THE CORNER POSITION.

DROVE AXLE DOWN INTO THE GROUND AND OVER IT IN THE SAME HORIZONTAL POSITION SET 2" X 31-1/2" GALVANIZED IRON PIPE WITH 3-1/4" BRASS DISK MARKED AS SHOWN ON PAGE 2 OF 2 CEMENTED IN THE TOP, UP 2" ABOVE GROUND SURFACE. PLACED STONES AROUND BRASS DISK. FOUND RED METAL "T" POST 7" WESTERLY OF BRASS DISK. SET 4 NEW IRON ROD ACCESSORIES AS SHOWN ON PAGE 2 OF 2. SET 6' ORANGE CARSONITE "SURVEY MARKER" POST 18" NORTH OF BRASS DISK.



RECENTLY THINNED
±70 YR OLD D. FIR
WITH SCATTERED HARDWOODS

MONUMENT DETAIL



3-1/4" BRASS DISK

LEGEND

- SET 5/8" X 30" REBAR WITH PLASTIC CAP
- YPC YELLOW PLASTIC CAP MARKED "BENTON COUNTY SURVEYOR"
- RPC RED PLASTIC CAP MARKED "BENTON COUNTY SURVEYOR"
- (C) MEASUREMENT TO CENTER
- ⊙ GOVERNMENT MONUMENT SET AS SHOWN
- V.S. VISIBLE SCRIBING
- C.S. COUNTY SURVEY
- B.T. BEARING TREE
- BEARING TREE STUMP AS NOTED
- ☁ BEARING TREE AS NOTED
- ⚡ BEARING TREE STUB AS NOTED

NEW ACCESSORIES:

1. SET REBAR (SEE LEGEND) N57°33'13"E, 38.48 FEET AND 9 INCHES BELOW GROUND LEVEL.
2. SET REBAR (SEE LEGEND) S42°54'36"E, 28.99 FEET AND 8 INCHES BELOW GROUND LEVEL.
3. SET REBAR (SEE LEGEND) S54°23'46"W, 28.48 FEET AND 9 INCHES BELOW GROUND LEVEL.
4. SET REBAR (SEE LEGEND) N50°20'20"W, 31.64 FEET AND 7 INCHES BELOW GROUND LEVEL.

NOTES:

COMPASS DECLINATION IS 15° EAST. ALL MEASURED DISTANCES AND BEARINGS ARE TO THE CENTER OF THE OBJECT, UNLESS OTHERWISE NOTED. ALL LIVE BEARING TREES ARE PAINTED AND HAVE A B.T. TAG ATTACHED, FACING THE CORNER UNLESS OTHERWISE NOTED. ALL NEW BEARING TREES HAVE A PLASTIC WASHER (STAMPED "SURVEY MARKER DO NOT REMOVE") ATTACHED BY AN ALUMINUM NAIL TO THE SIDE CENTER OF THE TREE FOR DISTANCE MEASUREMENT, UNLESS OTHERWISE NOTED.

THIS RESTORATION WAS PERFORMED AT THE DIRECTION AND APPROVAL OF THE BENTON COUNTY SURVEYOR *[Signature]*

REGISTERED
PROFESSIONAL
LAND SURVEYOR

FIRM/AGENCY: BENTON COUNTY SURVEYOR'S OFFICE
 ADDRESS: 360 S.W. AVERY AVE., CORVALLIS, OR 97333; PH. 541-766-6821
 PRESENT: DAVID L. MALONE, P.L.S., IAN T. MCGUIRE, P.L.S., AND
 JOEL SCOTT, STUDENT INTERN
 EQUIPMENT: NIKON NIVO3.C WITH SURVEY PRO ONBOARD.

06/06/24 *[Signature]*

OREGON
JANUARY 12, 1999
DAVID L. MALONE
51523

RENEWAL DATE: 12/31/24

106400140

REMONUMENT T10S ROW 73 | 34

1/4

FD 1-1/8" AXLE, FAMILY SET & UNDISTURBED,
 UP 4" ABOVE GROUND SURFACE FOR
 THE CORNER, WITH STONES AROUND IT,
 FD ROD "T" POST 7" WEST ONLY. FD
 FD SW CS9412 BT AND HOLD FOR BASIS
 OF MONUMENTS. FD SW CS9412 BT STUMP.
 FD FIR SWAG BT WEST FD BY CS9412, FD
 SW AT STUMP FD BY CS9412, DROWS
 AXLE DOWN INTO GROUND, IN SAME HORIZONTAL
 POSITION OVER AXLE DROWS 2"x31-1/2" CEP
 W/ 3-1/4" BRASS DISK CEMENTED IN THE
 TOP, UP 2" ABOVE SURFACE. PLACED STONES
 AROUND BRASS DISK. SET 4 NEW IRON ROD
 ACCESSORIES. SET 6 ORANGE CEMENTS "SURVEY
 MARKER" POST 18" NORTH OF BRASS DISK.

DR = 5/8" x 30" BLOW ROD

YPC OR RPE = YELLOW OR RED

PLASTIC CAP MARKED

"SUSSEX COUNTY SURVEYOR"

NEW = NAIL & PLASTIC W/ WHITE

MARKED "SURVEY MARKER"

DO NOT REMOVE



3-1/4" BRASS DISK

COOL, SOME CLOUDS

MIKON NW03.C
JURNEY PRO ON 03/04

7/10/12/24

D. MALONE
E. MCGUIRE
J. SCOTT

BASIS OF MONUMENTS
CS9412

± 25 YR OLD
D. FIR

DR RPE
DOWN 7"

CS9412 BT
19" D. FIR
SW AT
NOV. 5.
587-460
10/25/12

CS9412 BT
19" D. FIR
SW AT
NOV. 5.
587-460
10/25/12

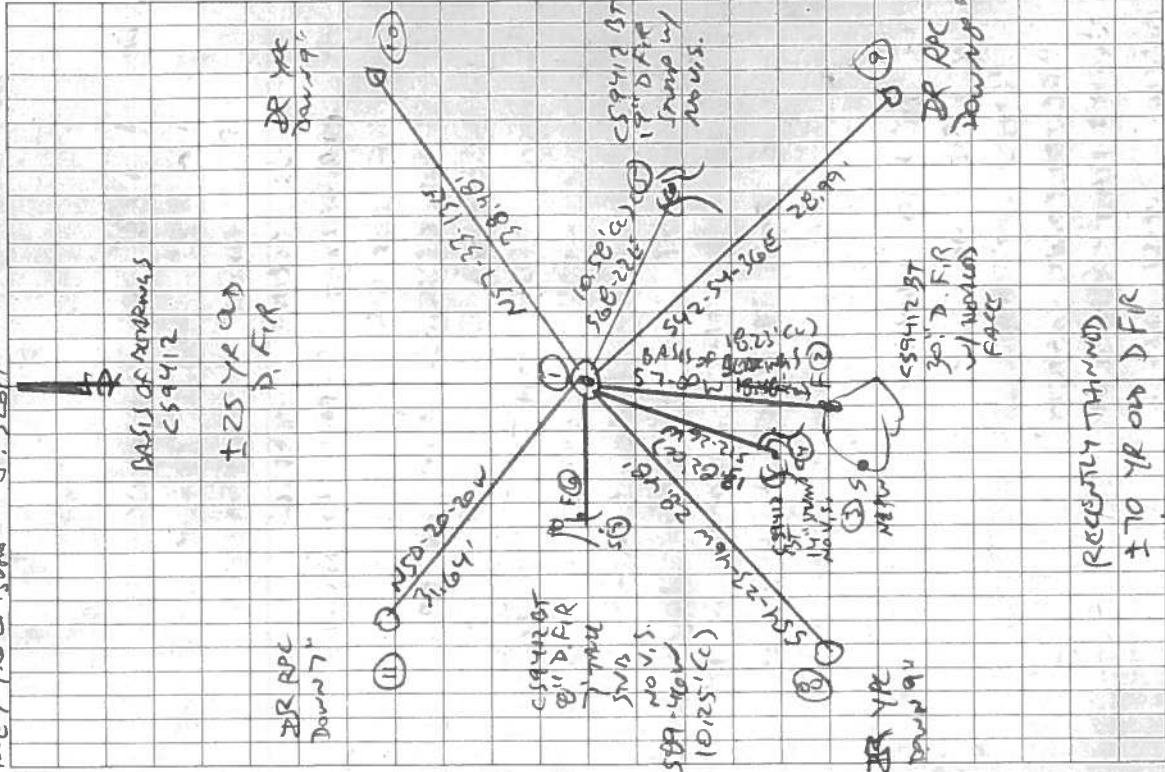
CS9412 BT
19" D. FIR
SW AT
NOV. 5.
587-460
10/25/12

DR YPC
DOWN 9"

CS9412 BT
30" D. FIR
W/ HOLLOW
FACE

RECENTLY THINNED
± 70 YR OLD D. FIR

W/ SCATTERED HARDWOODS



34/53

DATE 06/28/2001TOWNSHIP 10 SOUTH, RANGE 06 WEST, WILLAMETTE MERIDIAN; SECTION 33 CORNER E 1/4
DONATION LAND CLAIM N/A CORNER _____**COMMON CORNER(S):**

THE WEST 1/4 CORNER OF SECTION 34.

RECORDS (INFORMATION IN BOLD ITALICS IS COUNTY STAFFS' INTERPRETATION OF THE RECORD)

- [01] ORIGINAL GLO SURVEY BY DANIEL MURPHY, D.S., ON NOVEMBER 17, 1853, APPROVED SEPTEMBER 22, 1854. ***DEPOSITED 2 ROCKS AND MADE MOUNDS AND TRENCHES.***
- [02] COUNTY SURVEY NO. 1024 NOTES (FIELD BOOK NO. 36, PAGE 29) BY W.C. GALLOWAY, C.S., DATED APRIL 27, 1927. ***DETERMINED THE CORNER WAS LOST AND SETS A FORD AXLE WITH 2 BEARING TREES BY SINGLE PROPORTIONATE MEASUREMENT.***
- [03] OLD CORNER RESTORATION BOOK NO. 1, PAGE 185, BY W.C. GALLOWAY, DATED MAY 2, 1927. ***THE INFORMATION WAS DERIVED FROM RECORD [02].***
- [04] CORNER RESTORATION NO. 388. ***THIS IS A TRANSCRIBED COPY OF RECORD [03] AND MAY CONTAIN ERRORS AND OMISSIONS.***
- [05] MAP NO. 10-6-00016 BY BENTON COUNTY, NO DATE GIVEN. ***FORD AXLE WITH 2 BEARING TREES AT MID-POINT.***
- [06] COUNTY SURVEY NO. 9412 BY JIM PETERSON, P.L.S., DATED FEBRUARY 25, 1997. ***FOUND AN AXLE WITH 3 BEARING TREES (NO RECORD ON 2). MARKED 2 NEW BEARING TREES.***

COMMENTS/LOCATION/ETC:

THIS OFFICE IS NOT PREPARED TO ACCEPT THE RECORD [02] MONUMENT AT THIS TIME. RECORD [02] INTENDS TO REMONUMENT THIS CORNER AFTER DETERMINING IT WAS LOST. IF THIS CORNER IS TRULY LOST HIS PROCEDURE SHOULD BE VERIFIED IN THE FIELD BEFORE ACCEPTING HIS MONUMENT FOR THE CORNER.

NOTES:

THIS IS A MICROSOFT WORD 97 DOCUMENT NAMED "06839020" CREATED FROM A BOILER PLATE DOCUMENT NAMED "HISTORY", WHICH HAS A STYLESHEET NAMED "CORNER" ATTACHED TO IT.

FIRM/AGENCY: BENTON COUNTY SURVEYOR'S OFFICE
ADDRESS: 360 S.W. AVERY AVE. CORVALLIS OR 97333; PH. 766-6821
RESEARCH BY: CURTIS J. LIESENFELT, P.L.S.
DATA ENTRY BY: SAME

1/4 cor. on E of sec 24, T14SR8WWM.
Set oak stake from which
Oak 20" in dia. bears N25°W 2.68 down.
Marked Oak 12" " " South, 58 chains
" " 16" " " N25°W 2.26 "

C.S.#351 m.c.a.

Cor. to secs. 25, 26, 35 & 36 T. 145. R. 8 W. Will. Mer.
Set 3/4" x 3/4" x 36" steel bar Found sandstone mound.
Fir stump N. 82° E. 1.87 to center
Dead fir 30" in dia. bears N. 73 1/2° E 2.29 chs. center
" " stump S. 62 1/2° W. 1.58 " "
" " 36" " " N. 18 1/2° W. 1.09 " "
Mkd. fir 18" " " " N. 20 1/2° W. 1.080 " "

Witnesses
Albert Taylor
Chas. Small

1/4 Sec. Cor. bet. secs. 26 & 35 T. 14 S. R. 8 W. W.M.
Set a 1/4" x 1 1/2" iron, spring.
Fir stump 8" in dia. S. 40° W. .45 B.T. found
Marked Cedar stump 60" N. 8° 20' E .553. chs.
" Alder 8" in dia. S. 26° E. .060 "
" Fir 15" " " S. 18° 50' W. .430 "

C.S.#352 m.c.a.

Corner to Sections 27, 28, 33 & 34 T. 105. R. 6 W. W. M.
Set 1 1/4" x 32" galv. pipe Found what seemed to be stake hole
Fir 9" in dia. bears North .662 center All oaks found & checked.
" 10" " " " N. 88° 50' E .520 " Would be N. 4° E according to handle
" 15" " " " S. 3° 45' W. .709 "
" 20" " " " S. 42° 30' W. .497 "

Witnesses
O. A. Reynolds
Henry Plunkett
Apr 27, 1927.

May 3, 1927
Henry Plunkett

1/4 sec. cor. bet. secs. 33 & 34 T. 105. R. 6 W. W.M.
Set Ford axle set proportional dist. on line.
Oak 6" in dia. bears S. 53° 15' W. .446 chs. to cen.
" 8" " " " N. 30° W. .875 " " " 896 - 12° 30'

May 2, 1927
Henry Plunkett

Sec. cor. on 2nd std. parallel between secs. 33 & 34 T. 10-6
Set 1" ford axle both oaks dead, check.
Fir 50" in dia. bears S. 60° E. .370 chs. to cen.
" 9" " " " N. 8° W. .084 " " "

N. E. corner of Gallatin Adkins D.L.C. 79 T. 105 R. 3 W. W.M.
W.C. 1" shaft .388 S. 4° 04' W. of corner
Balm 14" in dia. bears N 6° 30' E. .130
" 17" " " " N. 26° E .083
Witness I. D. Merchant Oct. 1927.

C.S. 354
T. 10-6 W. M. C. A.

1/4 sec. cor. bet. secs. 25 & 36 T. 105. R. 6 W. W.M.
Set 1 1/4" iron rod
Maple 14" in dia. bears N. 70° E. .13 chs. std.
W. fir 6" " " " S. 70° E. .115 " "
Witnesses I. D. Merchant and Jewell Christensen.

5
mize
East
with
5
is sth
feet
M.
chs.
1.30
WM
hole



$\frac{1}{4}$ -Section corner between sections 33 and 34, Twp. 10 S., R. 6 W. W. M.

Reestablishment by W. C. Galloway

May 2, 1927

438
388

Set Ford axle, set proportional dist. on line.
Oak 6" in diam bears S 53° 15' W
Oak 8" in diam bears N-30° W

.446 chains
.875 chains

Witness Henry Plunkett