

# CORNER FILE TRACKING

H:\Survey\Corners\Misc\Filetrac.doc

11/23/98

<b>CORNER NUMBER</b>
<b>106835010</b>

9 2

<b>STEP</b>	<b>HISTORY(H)</b>	<b>RESTORATION(R2)</b>
Form Prepared, DB	6/27/01	6/27/01
Field Inspection, DB	N/A	N/A
Form Checked, DB	7/5/01	7/5/01
Form Edited, DB	7/10/01	7/10/01
Form Signed, DB (COUNT)	4	4
Authorize Payment, DB	—	—
Archive Digital Files	7/31/01	7/31/01
Collect Documents	8/1/01	8/1/01
Scanned	8/6/01	8/6/01
Copy For Filming	8/1/01	8/1/01
Filed, DB		
Finish index (count-unit)	8/1/01	8/1/01
Filmed (Archived), DB		

(DB) = Entry needed in database (Access).

## COMMENTS:

8/1/01 READY TO SCAN

CORNER HISTORY		T 10 S, R 6 W		SECTION 33 D.L.C. ISAAC KING NO. 39		CORNER - CORNER SE		# 839020
NO.	DATE	SOURCE	SURVEYOR	MONUMENTS AND ACCESSORIES		COMMENTS		
1	12/8/1852 9/16/1856	DRIB. GLD	DEMNIS MATHORN	SET POST @ 2 OAK BT'S, MEAS. TO FACE				1
2	9/18/1914	CS# 488 NOTES	BURT WILKES	FND. BOTH BT'S, SET STONE, FB 17/10 OLD #214				2 3 4
3	"	DR. OR. REST. BT. #1, P. 85	" "	" " " " "				5 6
4	-	REST. 402	-	TRANS. COPY OF REC. [03] + CONTAINS E & D				7 8
5	9/18/1914	MAP NO. 104 11-6-00015	BURT WILKES	FND. BOTH BT'S, SET STONE				9 10
6	-	MAP NO. 10-6-00010	BENTON COUNTY	NO DESL. TIED FROM W				11 12
7	-	CS# 8577	BERT UDELL (E)	FND. STONE, TIED N+W				13 14
8	12/1/1901	CS# 7493	JACK BURRILL	" "				15 16
9	-	REST. 3125	-	TRANS. FROM REC. [06] + MAY CONTAIN E+D				17 18
10	1/6/1942	CS# 8578	JOHN HOWELL	FND. STONE TIED FROM NW				19 20
11	2/25/1997	CS# 9412	JIM PETERSON	" " " " W+N				21 22 23 24 25 26 27 28 29 30 31

1-85  
402  
3125

C.S. #214 S.W. Corner Job S. Hayworth D.L.C. #38 - T. 10 N. S. Range 6 W.

SEPT 15 1830-1914

Set 3/4" x 15" bolt. From which

- Oak 30 S. 15° E. 3.69 Standing
- " 20 S. 42° W. 3.40 Stump (rotten)
- " 10 S. 27° W. 2.522 New.

S.E. Corner Job S. Hayworth D.L.C. N. 38. 10+11-6

Set stone 14x10x5" underneath stone 15x5x6"

- Oak 9" S. 82° W. 2.20 Standing not 229
- " 20" N. 70 1/2° W. 3.00 Stump
- " 15" N. 3° N. .530 New
- " 5" N. 80 1/2° W. .065 "

N.E. Corner of Cl. N. 38. Job S. Hayworth - 10+11-6

Set 1 1/2" x 4 1/2" Mower Axle from which

- Oak 20 S. 14° W. 3.14 Stump
- Mark oak 7 S. 50 1/2° E. 9.19 New
- " " 10 S. 27° W. 2.022 "

S.E. Cor. Isaac King D.L.C. N. 39. - T. 10 S., R. 6 W.

Set Stone 16" x 12" 7" - from which

- Oak 20 S. 72 1/2° E. 1.49 Standing
- " 12 N. 17 1/2° W. 4.54 "

The N.E. Cor. Cl. 38 bears S. 89° 41' W. 1.75

S.W. Corner of Isaac King Cl. #39 - 10-6

Set 1 1/2 x 30" = 1/2 Buggy Axle -

- Oak 30 S. 5 1/2° E. 63 Standing
- " 18 N. 65° E. 1.21 "

N.E. Corner R.F. Burgett Cl. 57 = N.W. Cor. Geo. Landerhin Cl. #58 - 11-6

C.S. #216

N.W. Corner <sup>L.E.</sup> ~~S.E.~~ Portland D.L.C. #63 - 12-13 S. 6 W.

OCT 28-29-1914

Set 3/4" x 16" spoke of master wheel of Binder

- Oak 24 S. 75° E. 2.96 - Not 1.96
- Other Tree gone.
- Witness - Millard Brown.

N.E. corner thos H. Linville Cl. #66 - 12-6

Set.

- Oak 12 S. 69° W. .59 Stump
- " " 3.52 E. .27 "
- Nowitnesses

Witnesses: Geo. Casady, Willm. Blumhert, Henry Blumhert, Clair Wilkins



S. E. corner Isaac King DLC 39, Twp. 10 S R 6 W

450402

Reestablishment by W. C. Galloway

September 20, 1914

Set stone 16" x 12" x 7"

Oak 20" in diam bears S  $72\frac{3}{4}^{\circ}$  E

Oak 12" in diam bears N  $17\frac{3}{4}^{\circ}$  W

N. E. corner C1 38 bears S  $89^{\circ} 46'$  W

1.49 chains (standing)

4.54 chains (standing)

1.75 chains

DATE 06/27/2001TOWNSHIP 10 SOUTH, RANGE 02 WEST, WILLAMETTE MERIDIAN; SECTION 33 CORNER N/A  
DONATION LAND CLAIM ISAAC KING NO. 39 CORNER SOUTHEAST**COMMON CORNER(S):**

NONE

**RECORDS (INFORMATION IN BOLD ITALICS IS COUNTY STAFFS' INTERPRETATION OF THE RECORD)**

- [01] ORIGINAL GLO SURVEY BY DENNIS HATHORN, D.S., ON DECEMBER 6, 1854, APPROVED SEPTEMBER 16, 1856. *SET A POST WITH 2 OAK BEARING TREES, MEASURED TO THE FACE.*
- [02] COUNTY SURVEY NO. ~~408~~ (OLD NO. 214) NOTES (FIELD BOOK NO. 17, PAGE 60) BY BURT WILKES, D.C.S., DATED SEPTEMBER 18, 1914. *FOUND BOTH BEARING TREES. SET A STONE.*
- [03] OLD CORNER RESTORATION BOOK NO. 1, PAGE 85, BY BURT WILKES, DATED SEPTEMBER 18, 1914. *THE INFORMATION IS DERIVED FROM RECORD [02].*
- [04] CORNER RESTORATION NO. 402. *THIS IS A TRANSCRIBED COPY OF RECORD [03] AND CONTAINS ERRORS AND OMISSIONS.*
- [05] MAP NO. 10 & 11-6-00015 BY BURT WILKES, DATED SEPTEMBER 18, 1914. *FOUND BOTH BEARING TREES. SET A STONE.*
- [06] MAP NO. 10-6-00010 BY BENTON COUNTY, NO DATE GIVEN. *TIED FROM THE WEST, BUT NOT DESCRIBED.*
- [07] COUNTY SURVEY NO. 8577 BY BERT UDELL, P.E., NO DATE GIVEN. *FOUND A STONE.*
- [08] COUNTY SURVEY NO. 7493 BY JACK BURRELL, P.L.S., DATED DECEMBER 1, 1981. *FOUND A STONE.*
- [09] CORNER RESTORATION NO 3125. *TRANSCRIBED FROM RECORD [08] AND MAY CONTAIN ERRORS AND OMISSIONS.*
- [10] COUNTY SURVEY NO. 8578 BY JOHN HOWELL, P.L.S., DATED JANUARY 6, 1992. *FOUND A STONE.*
- [11] COUNTY SURVEY NO. 9412 BY JIM PETERSON, P.L.S., DATED FEBRUARY 25, 1997. *FOUND A STONE.*

**COMMENTS/LOCATION/ETC:****NOTES:**

THIS IS A MICROSOFT WORD 97 DOCUMENT NAMED "06839020" CREATED FROM A BOILER PLATE DOCUMENT NAMED "HISTORY", WHICH HAS A STYLESHEET NAMED "CORNER" ATTACHED TO IT.

**FIRM/AGENCY:** BENTON COUNTY SURVEYOR'S OFFICE  
**ADDRESS:** 360 S.W. AVERY AVE. CORVALLIS OR 97333; PH. 766-6821  
**RESEARCH BY:** CURTIS J. LIESENFELT, P.L.S.  
**DATA ENTRY BY:** SAME

**BENTON COUNTY CORNER RESTORATION FORM, PAGE 1 OF 2, 106839020R2****SEE CORNER HISTORY FORM FOR RECORDS ETC.**

**CORNER RESTORATION FIELD BOOK NUMBER** 19 **PAGE(S)** 37 **DATE** 06/27/2001  
**TOWNSHIP** 10 **SOUTH, RANGE** 6 **WEST, WILLAMETTE MERIDIAN; SECTION** 33 **CORNER** N/A  
**DONATION LAND CLAIM** ISAAC KING NO. 38 **CORNER** SOUTHEAST  
**CONDITION REPORT**     ; **REFERENCED OUT**     ; **RENEWED** XX; **SURVEYED IN**     

**LOCATION AND COMMENTS:**

THE CORNER IS LOCATED IN A BRUSHY AREA, ON A MODERATELY SLOPING, WESTERLY FACING HILLSIDE. IT IS QUESTIONABLE FOR PREMARKING AND PRECISE GPS CONTROL. TO REACH IT FROM THE INTERSECTION OF ALEXANDER RD. AND KINGS VALLEY HIGHWAY, FOLLOW KINGS NORTHERLY FOR 1.55 MILES TURN RIGHT ON THE GRAVEL DRIVEWAY TO HOUSE NO. 37571, GO UP THE DRIVEWAY 0.39 MILES TO A FORK, GO LEFT FOR 100', GO EAST-SOUTHEASTERLY UP A TRAIL FOR ABOUT 450', GO SOUTH-SOUTHEASTERLY UPHILL ABOUT 200' TO THE NE CORNER OF DLC 38. THIS CORNER IS EASTERLY UP THE HILL 116'.

**MONUMENTS AND ACCESSORIES FOUND (CONDITION AND SOURCE):**

**FOUND:** 16" X 12" X 6" STONE WITH "CS" MARKED ON THE NORTHERLY SIDE.  
 (SET STONE 16 X 12 X 7 PER RECORD [02]).  
 (SET STONE 16" X 12" X 7" PER RECORD [03]).  
 (FOUND CS STONE 16" X 12" X 7" PER RECORD [07]).  
 (FOUND STONE 16" X 12" X 7" PER RECORDS [08], [10] AND [11]).

**FOUND:** 2 1/2" BRASS DISC AT THE NORTHEAST CORNER OF THE JOB S. HAWORTH DLC NO. 38, BEARS N 87°29'W~115.88'. THIS LINE IS THE BASIS OF BEARINGS FOR THIS RESTORATION. THE BEARINGS WERE DETERMINED BY AN HOUR ANGLE SOLAR OBSERVATION TAKEN AT SAID CLAIM CORNER.  
 (WEST~115.50' PER RECORD [01]).  
 (1 1/2" X 4' MOWER AXLE, BEARS N 87°49'W~114.0' AS COMPUTED FROM REOCRD [02]).  
 (S 89°46'W~115.50' PER RECORD [04]).  
 (FOUND 1 1/2" AXLE AND SET 2" PIPE IN PLACE OF AXLE, N 87°38'W~115.8' PER RECORD [07]).  
 (FOUND 2" PIPE, N 87°32'47"W~115.93' PER RECORD [11]).

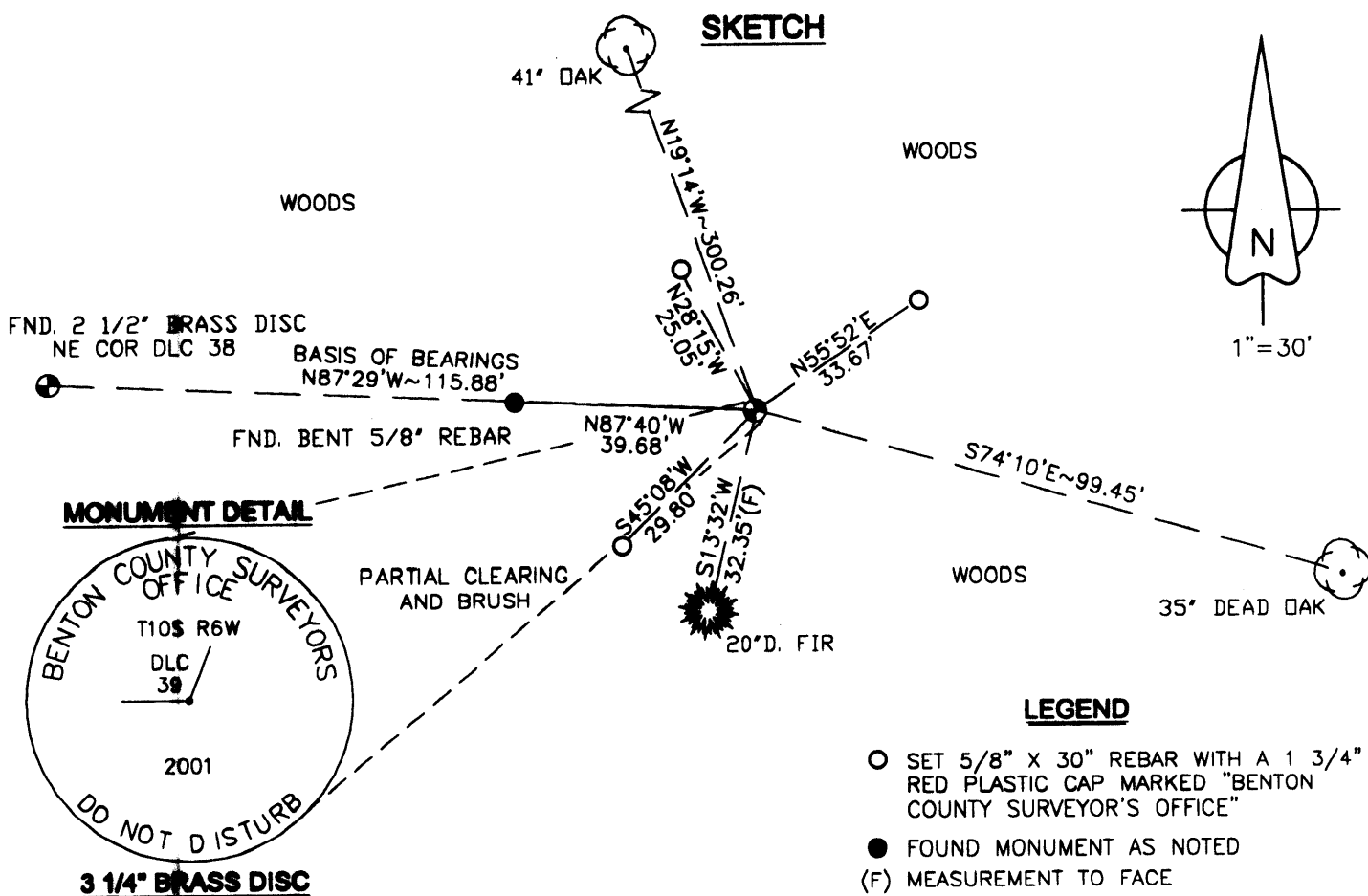
**FOUND:** 35" DEAD OAK WITH ROTTED OUT UPPER AND LOWER FACES, BEARS S 74°10'E~99.45'. SET AN ALUMINUM NAIL AND PLASTIC WASHER IN THE NORTHERLY BASE.  
 (20" OAK, S 75°E~98.34' PER RECORD [01]).  
 (OAK, S 72°45'E~98.34' PER RECORD [02]).  
 (20" OAK, S 72°45'E~98.34' PER RECORD [03]).

**FOUND:** 41" OAK WITH A HEALED FACE, BEARS N 19°14'W~300.26'. SET AN ALUMINUM NAIL AND PLASTIC WASHER IN THE WESTERLY BASE.  
 (12" OAK, N 20°W~299.64' PER RECORD [01]).  
 (OAK N 17°45'W~299.64' PER RECORD [02]).  
 (12" OAK, N 17°45'W~299.64' PER RECORD [03]).

**FOUND:** 5/8" REBAR WITH THE TOP 12" BENT WESTERLY, (TIED THE STRAIGHT BASE) BEARS N 87°40'W~39.68'.  
 (SET 5/8" IRON ROD, N 87°38'W~39.64' PER RECORD [07]).

**MONUMENT SET (PROCEDURES AND DESCRIPTION):**

**SET:** 2" INSIDE DIAMETER BY 36" LONG IRON PIPE, WITH A 3 1/4" BENTON COUNTY BRASS DISC, STAMPED AS SHOWN, IN THE SAME X, Y POSITION AS THE TOP CENTER OF THE RECOVERED STONE. REBURIED THE STONE HORIZONTALLY WITH THE MARKS UP ALONG THE SOUTHERLY SIDE OF THE NEW MONUMENT.



**NEW ACCESSORIES:**

- 20" D. FIR FACED AND SCRIBED "DLC 38" BEARS S 13°32'W~32.35'.
- SET: REBAR (SEE LEGEND) 6" BELOW GROUND SURFACE, BEARS N 55°52'E~33.67'.
- SET: REBAR (SEE LEGEND) 6" BELOW GROUND SURFACE, BEARS N 28°15'W~25.05'.
- SET: REBAR (SEE LEGEND) 6" BELOW GROUND SURFACE, BEARS S 45°08'W~29.80'.
- FOUND A METAL "T" POST 0.7' SOUTHEASTERLY.
- SET AN ORANGE FIBERGLASS "SURVEY MARKER" POST 1' NORTHWESTERLY.

**NOTES:**

COMPASS DECLINATION IS 20° EAST. ALL MEASURED DISTANCES AND BEARINGS ARE TO THE CENTER OF THE OBJECT, UNLESS OTHERWISE NOTED. ALL BEARING TREES ARE PAINTED AND HAVE A B.T. TAG ATTACHED, FACING THE CORNER UNLESS OTHERWISE NOTED. ALL NEW BEARING TREES HAVE A PLASTIC WASHER (STAMPED "BENTON COUNTY SURVEYOR CORNER RESTORATION") ATTACHED (BY ALUMINUM NAIL) TO THE FACE, BELOW THE "BT" FOR DISTANCE AND ANGLE MEASUREMENT UNLESS OTHERWISE NOTED.

THIS DOCUMENT WAS NAMED AND CREATED IN A MANNER SIMILAR TO THE HISTORY FORM. THE NAME OF THE BOILER PLATE IS "MONUMENT". THE SKETCH IS FROM AUTOCAD RELEASE 14.

THIS RESTORATION WAS PERFORMED AT THE DIRECTION AND APPROVAL OF THE BENTON COUNTY/DEPUTY COUNTY SURVEYOR, AJ

**FIRM/AGENCY:** BENTON COUNTY SURVEYOR'S OFFICE  
**ADDRESS:** 360 S.W. AVERY AVE. CORVALLIS OR 97333; PH. 766-6821  
**SURVEYOR:** CURTIS J. LIESENFELT, P.L.S.  
**SURVEY CREW:** JOHN W. SEEVERS, INTERN  
**WITNESS(ES):** BOB, LAUREN AND JAKE MONTGOMERY

REGISTERED  
PROFESSIONAL  
LAND SURVEYOR

*Curtis J. Liesenfelt*  
 OREGON  
 JULY 17, 1986  
 CURTIS J. LIESENFELT  
 2213

LICENSE RENEWAL 12/31/2002