

CORNER FILE TRACKING

H:\Survey\Corners\Misc\Filetrac.doc

11/23/98

CORNER NUMBER
106840040

STEP	HISTORY()	RESTORATION()
Form Prepared, DB	✓ 1/16/04	2/13/04
Field Inspection, DB	✓ 2/12/04	2/12/04
Form Checked, DB	✓ 2/20/04	2/20/04
Form Edited, DB	✓ 2/24/04	2/24/04
Form Signed, DB	✓ 2/24/04	2/24/04
Authorize Payment, DB	—	—
Archive Digital Files	✓ 3/25/04	3/25/04
Collect Documents	✓ 3/25/04	3/25/04
Scanned	3/26/04	3/26/04
Copy For Filming	✓ 3/25/04	3/25/04
Filed, DB		
Finish index (count unit)	2/12/04	2/12/04
Filmed (Archived), DB		

(DB) = Entry needed in database (Access).

COMMENTS:

DATE 01/16/2004TOWNSHIP 10 SOUTH, RANGE 06 WEST, WILLAMETTE MERIDIAN; SECTION 32 CORNER N/A
DONATION LAND CLAIM JAMES WATSON NO. 40 CORNER INTERIOR**COMMON CORNER(S):**

NONE

RECORDS (INFORMATION IN *BOLD ITALICS* IS COUNTY STAFFS' INTERPRETATION OF THE RECORD)

BASED ON EXTENSIVE RESEARCH AND RECOVERY OF EVIDENCE, THIS OFFICE HAS DETERMINED THAT MOST GENERAL LAND OFFICE SURVEYORS MEASURED TO THE FACE OF BEARING TREES.

- [01] GENERAL LAND OFFICE (GLO) NOTES OF THE JAMES WATSON DONATION LAND CLAIM (DLC) NO. 40 BY DENNIS HATHORN, D.S., DATED DECEMBER 8, 1854. *SET A POST. MARKED A 15" ASH N2°E, 24 LKS. (15.84 FEET) AND A 12" ASH S35°E, 32 LKS. (21.12 FEET).*
- [02] COUNTY SURVEY NO. 203 FIELD NOTES (FIELDBOOK 7, PAGE 45) BY J. A. GANONG, D.C.S., DATED FEBRUARY 7, 1911. *CORNER TIED, BUT NOT DESCRIBED.*
- [03] OLD COUNTY SURVEY NO. 177 OF ROAD NO. 351 FIELD NOTES (FIELDBOOK 18, PAGE 1) BY W. C. GALLOWAY, C.S., DATED SEPTEMBER 17, 1914. *SET A 1 1/4" PIPE. FOUND A 15" ASH (GLO BT) N10°E, 0.24 CHS. (15.84 FEET) AND A 12" ASH STUMP (GLO BT) S35°E, 0.32 CHS. (21.12 FEET). MARKED A 32" FIR N85°E, 0.955 CHS. (63.03 FEET).*
- [04] CORNER RESTORATION BOOK NO. 1, PAGE 83 BY W. C. GALLOWAY, C.S., DATED SEPTEMBER 18, 1914. *SET A 1 1/4" PIPE. FOUND A 15" ASH (GLO BT) N10°E, 0.24 CHS. (15.84 FEET) AND A 12" ASH STUMP (GLO BT) S35°E, 0.32 CHS. (21.12 FEET). MARKED A 32" FIR N85°E, 0.955 CHS. (63.03 FEET).*
- [05] CORNER RESTORATION NO. 405. *TRANSCRIBED FROM RECORD [04] AND MAY CONTAIN ERRORS AND/OR OMISSIONS.*
- [06] BENTON COUNTY MAP NO. 10-6-0010 BY BENTON COUNTY, NO DATE GIVEN. *TIED BUT NOT DESCRIBED.*
- [07] COUNTY SURVEY NO. 2486 BY CURTIS HANSON, C.S., DATED JUNE 22, 1953. *1 1/4" PIPE ASH 15" N10°E, 0.24 CHS (15.84 FEET) FIR 32" N85°E, 0.955 CHS (63.03 FEET). NOTE: THIS INFORMATION MAY HAVE BEEN COPIED FROM OTHER RECORD DATA.*

NOTES:

THIS IS A MICROSOFT WORD 2000 DOCUMENT NAMED "06840040" CREATED FROM A BOILER PLATE DOCUMENT NAMED "HISTORY", WHICH HAS A STYLESHEET NAMED "CORNER" ATTACHED TO IT.

FIRM/AGENCY: BENTON COUNTY SURVEYOR'S OFFICE
ADDRESS: 360 S.W. AVERY AVE. CORVALLIS OR 97333; PH. 766-6821
RESEARCH BY: BERNARD S. ALTENBACH, ENGINEER/SURVEY TECH.
DATA ENTRY BY: BSA

BENTON COUNTY CORNER RESTORATION FORM, PAGE 1 OF 2, 106840040R2

SEE CORNER HISTORY FORM FOR RECORDS ETC.

CORNER RESTORATION FIELD BOOK NUMBER 22 PAGE(S) 6 DATE 2/12/2004
TOWNSHIP 10 SOUTH, RANGE 6 WEST, WILLAMETTE MERIDIAN; SECTION 29 CORNER N/A
DONATION LAND CLAIM JAMES WATSON NO. 40 CORNER INTERIOR
CONDITION REPORT ; REFERENCED OUT ; RENEWED XX; SURVEYED IN

LOCATION AND COMMENTS:

CORNER IS LOCATED IN A FLAT AREA AT THE NORTHERLY END OF A WOVEN AND BARBED WIRE FENCE AND 10 FEET WEST OF A GRAVEL DRIVEWAY. TO REACH THE CORNER FROM THE JUNCTION OF HIGHWAY 223 (KINGS VALLEY HIGHWAY) AND ALEXANDER ROAD, TRAVEL WESTERLY AND NORTHERLY ON ALEXANDER ROAD FOR 2.97 MILES; THEN RIGHT (NORTHERLY) ON A GRAVEL DRIVEWAY FOR 465 FEET TO CORNER ON WEST SIDE OF DRIVEWAY. CORNER IS FAIR FOR PREMARKING AND GPS CONTROL.

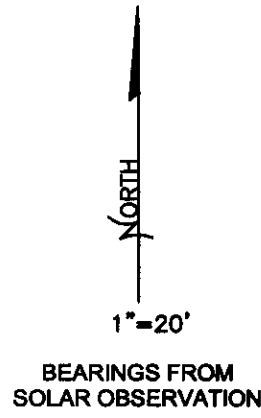
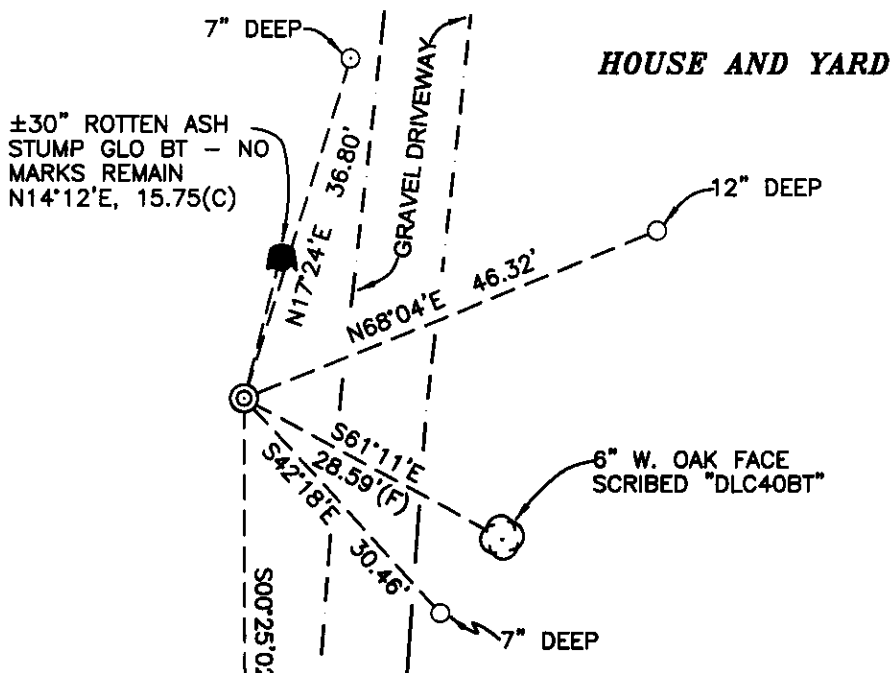
MONUMENTS AND ACCESSORIES FOUND (CONDITION AND SOURCE):

1. FOUND 1 1/4" X 31", THINWALL RUSTY IRON PIPE, 2" ABOVE GROUND LEVEL FOR CORNER POSITION.
(SET 1 1/4" IRON PIPE FROM GLO BEARING TREES PER RECORDS [03] AND [04]).
(1 1/4" IRON PIPE PER RECORD [07]).
2. FOUND ±30" BADLY ROTTEN ASH STUMP WITH NO MARKS REMAINING, N14°12'E, 15.75 FEET TO CENTER.
(15" ASH, N2°E, 15.84 FEET PER RECORD [01]).
15" ASH, N10°E, 15.84 FEET PER RECORDS [03] AND [04]).
3. FOUND 1 1/4" IRON PIPE, S00°25'02"E, 277.66 FEET. IRON PIPE WAS FOUND IN NORTH/SOUTH WOVEN AND BARBED WIRE FENCE, 3" BELOW GROUND LEVEL AND TIPPED TO THE NORTHWEST. STRAIGHTENED AND RESET 2" ABOVE GROUND LEVEL.
(SET 1 1/4" PIPE, S0°04'E, 277.33 FEET PER RECORD [03]).
(NO MONUMENT DESCRIPTION, S0°11'E, 277.33 FEET PER RECORD [06]).

MONUMENT SET (PROCEDURES AND DESCRIPTION):

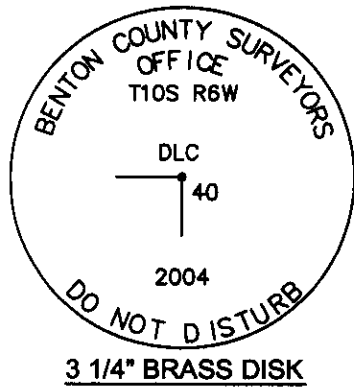
HELD THE 1 1/4" IRON PIPE PER RECORD [03], FOR THE TRUE CORNER POSITION, WHICH IS IN AGREEMENT WITH THE ABOVE FOUND ACCESSORIES. REMOVED THE 1 1/4" IRON PIPE AND SET A 2" X 31 1/2" GALVANIZED IRON PIPE WITH A 3 1/4" BRASS DISK CONCRETED IN THE TOP, 2" ABOVE GROUND LEVEL, MARKED AND REFERENCED AS SHOWN ON PAGE 2 OF 2. SET 6 FOOT ORANGE CARSONITE "SURVEY MARKER" POST, 0.5 FEET WEST OF NEW MONUMENT.

BRUSH WITH SCATTERED FIR AND HARDWOODS



BRUSH WITH SCATTERED
FIR AND HARDWOODS

MONUMENT DETAIL



LEGEND

- SET 5/8" X 30" REBAR WITH YELLOW PLASTIC CAP MKD "BENTON COUNTY SURVEYOR"
- FOUND MONUMENT AS NOTED
- (F) MEASUREMENT TO FACE
- (C) MEASUREMENT TO CENTER
- ⊙ GOVERNMENT MONUMENT SET AS SHOWN
- ⊙ BEARING TREE AS NOTED
- GLO GENERAL LAND OFFICE
- I.P. IRON PIPE

NEW ACCESSORIES:

1. SET REBAR (SEE LEGEND) 7" BELOW GROUND LEVEL, N17°24'E, 36.80 FEET AND 3 FEET WEST OF A GRAVEL DRIVEWAY.
2. SET REBAR (SEE LEGEND) 12" BELOW GROUND LEVEL, N68°04'E, 46.32 FEET.
3. SET REBAR (SEE LEGEND) 7" BELOW GROUND LEVEL, S42°18'E, 30.46 FEET AND 3.5' EAST OF A GRAVEL DRIVEWAY IN WOVEN AND BARBED WIRE FENCE.
4. 6" WHITE OAK FACE SCRIBED "DLC40BT" BEARS S61°11'E, 28.59 FEET. SET ALUMINUM NAIL AND PLASTIC WASHER IN BASE BELOW SCRIBS FOR DISTANCE AND ANGLE MEASUREMENT.

NOTES:

COMPASS DECLINATION IS 20° EAST. ALL MEASURED DISTANCES AND BEARINGS ARE TO THE CENTER OF THE OBJECT, UNLESS OTHERWISE NOTED. ALL BEARING TREES ARE PAINTED AND HAVE A B.T. TAG ATTACHED, FACING THE CORNER UNLESS OTHERWISE NOTED. ALL NEW BEARING TREES HAVE A PLASTIC WASHER (STAMPED "BENTON COUNTY SURVEYOR CORNER RESTORATION") ATTACHED (BY ALUMINUM NAIL) TO THE FACE, BELOW THE "BT" FOR DISTANCE AND ANGLE MEASUREMENT UNLESS OTHERWISE NOTED. THE DRAWING IS FROM AUTOCAD RELEASE 2002.

THIS RESTORATION WAS PERFORMED AT THE DIRECTION AND APPROVAL OF THE BENTON COUNTY SURVEYOR. *DM*

REGISTERED
PROFESSIONAL
LAND SURVEYOR

David M. Dean 2-24-04

OREGON
JULY 13, 1984
DAVID M. DEAN
2090

FIRM/AGENCY: BENTON COUNTY SURVEYOR'S OFFICE
ADDRESS: 360 S.W. AVERY AVE. CORVALLIS OR 97333; PH. 766-6821
PRESENT: DAVID M. DEAN, P.L.S. AND BERNIE ALTENBACH, SURVEY TECH.

RENEWAL DATE: 12/31/05

Set a 1 1/4" pipe galv.

Set a 1 1/4" pipe in cen. of maple stump S. E. .065 chs.

Set a pipe 20 feet North

Witnesses G.H. Bath

July 29, 1914.

Indexed back from page 112

914

Road. 346 most S.E. cor. of Thomas P. Adams D.L.P. #48 Tp 12 S R 5 W.

Set 3/4" iron rod.

1 1/4" pipe bears N 55' W. 40.075 chs.

Center of R.P. N. 59° 29' E. 15.006 chs.

Witness G. H. Bath.

August 12, 1914.

Road #357

Int. ^{cor.} of James Watson Pl. #40. Tp. 10 S. R. 6 W.

Set 1 1/4" galv. pipe, ash stump 12" S. 35° E. .32 chs.

Ash 10" in dia. bears N. 10° E. .24 chs. std.

Fir 32" " " " N. 85° E. .955 "

Witnesses Richard Kingery, S. A. France, J. M. & P. A. Fowler Sept. 18, '14

14

most south S. W. cor. of James Watson D.L.P. #40. Tp. 10 S. R. 6 W.

Set 1 1/4" pipe

Oak 6" in dia. bears S 71° 50' W. 4.06 chs. std.

" 18" " " " N. 44° 40' W 5.40 chs " Lobe cut.

" 6" " " " N. 58° 10' W. 4.329 "

Witnesses Richard Kingery, Walter Norton, Sept. 19, '14

914

Sec. cor. to secs 5, 6, 7, & 8. Tp. 11 S. R. 6 W.

Set 1 1/4" shaft.

Ash 6" in dia. bears N. 6° 20' E. 1.077 chs.

Fir. 18" " " " S. 42° W. 1.72 " std.

" 12" " " " N. 27° 30' W. .510 "

Witnesses Richard Kingery, Walter Norton, Sept. 24, '14.

Interior corner of James Watson Cl 40, Twp. 10 S R 6 W

Reestablishment by W. C. Galloway

September 18, 1914

Set 1 1/4" galvanized pipe

Ash stump 12" in diam bears S 35° E

.32 chains

Ash 15" in diam bears N 10° E

.24 chains(standing)

Fir 32" in diam bears N 85° E

.955 chains

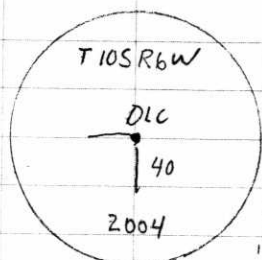
Witnesses Richard Kingery, C. A. France, J. M. and C. A. Fowler

106840040

REMONUMENTING INTERIOR CORNER OF
JAMES WATSON DLC 40 TIOS R6W

Fd 1 1/4" I.P. 2" ↑ - THIN WALL BADLY
RUSTED AT NLY END OF WOVEN AND
BARBED WIRE FC. AS SET BY W.C.G.
FROM GLO BTs. Fd 5' 30" ROTTEN
ASH STUMP GLO BT - NO MARKS VISIBLE.
C.S.B.T. AND OTHER GLO BT ARE
GONE - NO TRACE.

HELD 1 1/4" I.P. FOR COR. POSITION -
REMOVED AND SET 2" x 3 1/2" 6 I.P.
W/ 3/4" BRASS DISK CONC. IN TOP
2" ↑ MKD AS SHOWN. REMOVED 1 1/4" I.P.
FROM AREA - SET 6' CARSONITE (ORANGE)
POST 0 5' W OF NEW MONUMENT
REF. AS SHOWN.



3 1/4" BRASS DISK

CLEAR, MILD
51°F, 30.0" Hg
LEICA TCR 1105/TDS

FILE: 06840040.CRS

2/12/04 22/6
D. DEAN
B. ALTENBACH

