

## CORNER FILE TRACKING

H:\Survey\Corners\Misc\Filetrac.doc

11/23/98

<b>CORNER NUMBER</b>
106847010

STEP	HISTORY()	RESTORATION()
Form Prepared, DB	4/6/06	6/29/06
Field Inspection, DB	6/23/06	6/23/06
Form Checked, DB		
Form Edited, DB		
Form Signed, DB		
Counter Index	6/26/06	6/26/06
GIS Index	6/26/06	6/26/06
Authorize Payment, DB	—	—
Archive Digital Files		
Collect Documents	N/A	N/A
Scanned	7/11/06	7/11/06
Copy For Filming		
Filed, DB		
Finish index (count unit)	6/23/06	6/23/06
Filmed (Archived), DB		

(DB) = Entry needed in database (Access).

### COMMENTS:

DATE 04/06/2006

TOWNSHIP 10 SOUTH, RANGE 06 WEST, WILLAMETTE MERIDIAN; SECTION 08 CORNER N/A  
DONATION LAND CLAIM RICHARD TATUM NO. 47 CORNER NORTHEAST

COMMON CORNER(S).

NONE

**RECORDS (INFORMATION IN *BOLD ITALICS* IS COUNTY STAFFS' INTERPRETATION OF THE RECORD)**

**BASED ON EXTENSIVE RESEARCH AND RECOVERY OF EVIDENCE, THIS OFFICE HAS DETERMINED THAT MOST GENERAL LAND OFFICE SURVEYORS MEASURED TO THE FACE OF BEARING TREES**

[01] GENERAL LAND OFFICE (GLO) NOTES BY D HATHORN, D S , DATED DECEMBER 5, 1854 ***SET A POST. MARKED A 36" W. OAK S15°W 271 LKS. (178.86 FT.) AND A 30" W. OAK N54°W 317 LKS. (209.22 FT.)***

COMMENTS/LOCATION/ETC.

**NOTES**

THIS IS A MICROSOFT WORD 2000 DOCUMENT NAMED "06847010" CREATED FROM A BOILER PLATE DOCUMENT NAMED "HISTORY", WHICH HAS A STYLESHEET NAMED "CORNER" ATTACHED TO IT

**FIRM/AGENCY:** BENTON COUNTY SURVEYOR'S OFFICE  
**ADDRESS:** 360 S W AVERY AVE CORVALLIS OR 97333, PH 766-6821  
**RESEARCH BY:** BERNARD S ALTENBACH, ENGINEER/SURVEY TECH  
**DATA ENTRY BY:** SAME

**BENTON COUNTY CORNER RESTORATION FORM, PAGE 1 OF 2, 106847010R1**

**SEE CORNER HISTORY FORM FOR RECORDS ETC.**

CORNER RESTORATION FIELD BOOK NUMBER 24 PAGE(S) 27 DATE 06/26/2006  
TOWNSHIP 10 SOUTH, RANGE 6 WEST, WILLAMETTE MERIDIAN; SECTION 08 CORNER NONE  
DONATION LAND CLAIM RICHARD TATUM NO. 47 CORNER NORTH EAST  
CONDITION REPORT \_\_\_\_; REFERENCED OUT \_\_\_\_, RENEWED XX; SURVEYED IN \_\_\_\_

**LOCATION AND COMMENTS.**

CORNER IS LOCATED ON A GENTLE SOUTH FACING SLOPE AT THE APPROXIMATE INTERSECTION OF A WOVEN A BARBED WIRE FENCE BEARING SOUTH AND WEST TO REACH CORNER FROM THE JUNCTION OF HIGHWAY 223 (KINGS VALLEY HIGHWAY) AND MAXFIELD ROAD, TRAVEL NORTHERLY ON HIGHWAY 223 FOR 0 93 MILES, THEN LEFT ON PRIVATE GRAVEL ROAD FOR ±300 FEET TO LOCKED GATE (E E TIMBER CO, PASS THROUGH GATE STAYING ON MAIN GRAVEL ROAD FOR 0 51 MILES, THEN LEFT ON DIRT SPUR ROAD BEARING SOUTHERLY AND WESTERLY FOR 0 38 MILES AND PARK, THEN WESTERLY FOR ± 450 FEET TO CORNER CORNER IS POOR FOR PREMARKING AND G P S CONTROL

**MONUMENTS AND ACCESSORIES FOUND (CONDITION AND SOURCE):**

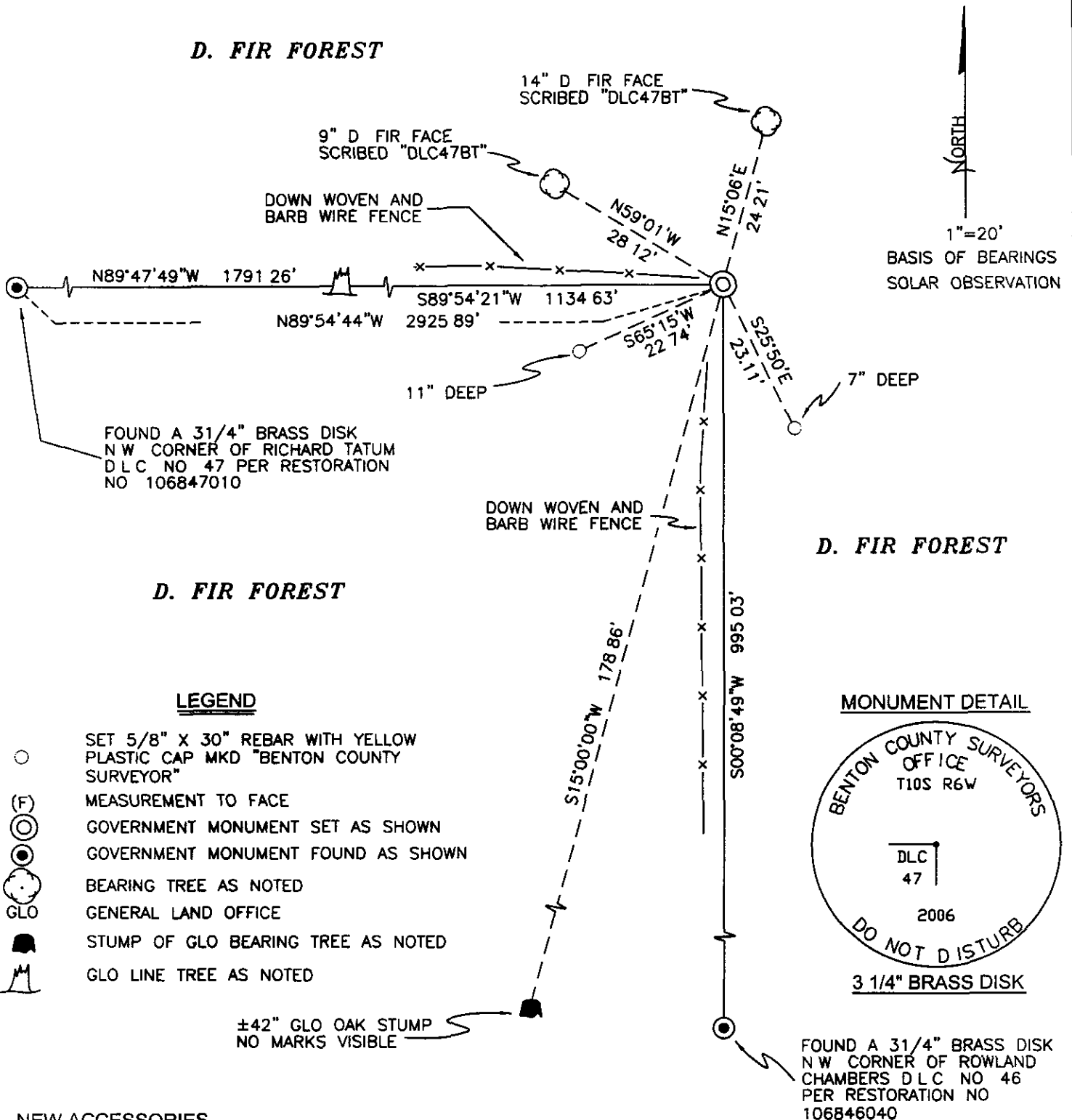
- 1 FOUND ±42" W OAK STUMP, S15°00'W, 178 86 FEET TO APPROXIMATE ORIGINAL FACE STUMP IS ROTTEN AND BURNT WITH NO VISIBLE SCRIBING REMAINING (MARKED 36" W OAK, S15°W, 178 86 FEET PER RECORD [01]).
- 2 FOUND ±50" X 6' TALL D FIR SNAG, S89°54'21"W, 1134.63 FEET TO CENTER DAIMETER TAKEN FROM EXISTING BARK RING, ONLY PORTION OF 12" DIAMETER CENTER SECTION OF SNAG REMAINS, NO VISIBLE MARKS (HACK MARKS) REMAIN (40" FIR, WEST, 1131 24 FEET PER RECORD [01])
- 3 FOUND 3 1/4" BRASS DISK ON 2" GALVANIZED IRON PIPE, S00°08'49"W, 995 03 FEET AT THE NORTHWEST CORNER OF THE ROWLAND CHAMBERS DLC NO 46 (SEE RESTORATION NO 106846040) (SET POST FOR CHAMBERS NORTHWEST CORNER, SOUTH 1003 86 FEET PER RECORD [01])
- 4 FOUND 3 1/4" BRASS DISK ON 2" GALVANIZED IRON PIPE, N89°47'49"W, 1791 26 FEET AT THE NORTHWEST CORNER OF THE RICHARD TATUM DLC NO 47 (SEE RESTORATION NO 106847040) (SET POST FOR NW CORNER, WEST, 2925 89 FEET PER RECORD NO [01])

**MONUMENT SET (PROCEDURES AND DESCRIPTION).**

FROM THE APPROXIMATE NORTHEAST CORNER OF A MOSTLY DOWN WOVEN AND BARBED WIRE FENCE, WE FOUND A ±42" ROTTEN AND BURNT W OAK STUMP WITH NO VISIBLE MARKS, MATCHING RECORD GLO BEARING AND DISTANCE AS NOTED IN NO 1 ABOVE FROM SAID OAK STUMP WE CALCULATED A TEMPORARY CORNER POSITION BASED ON RECORD GLO BEARING AND DISTANCE (BEARINGS BASE ON TRUE FROM SOLAR OBSERVATION) WE THEN SURVEYED FROM THE NORTHWEST CORNER OF THE ROWLAND CHAMBERS DLC NO 46, RUNNING NORTH TO THE CALCULATED NORTHEAST CORNER OF THE RICHARD TATUM DLC NO 47 (SUBJECT CORNER), THEN SURVEYING WEST TO THE NORTHWEST CORNER OF THE SAID TATUM CLAIM RUNNING THE NORTH LINE OF SAID TATUM CLAIM, WE FOUND AND TIED WHAT WE BELIEVE TO BE A GLO LINE TREE AS NOTED IN NO 2 ABOVE FROM OUR TEMPORARY CALCULATED CORNER, OUR DISTANCE TO THE SAID LINE TREE MATCHES GLO RECORD WITHIN 3 4 FEET FOR DISTANCE AND 5 1/2 MINUTES FOR BEARING (3 6 FEET SOUTH OF A LINE BETWEEN OUR CALCULATED NORTHEAST CORNER AND NORTHWEST CORNER OF THE TATUM CLAIM)

BASED ON THE ABOVE EVIDENCE, WE HAVE HELD OUR SAID CALCULATED POSITION FOR THE SUBJECT CORNER AT CALCULATED POSITION, SET A 2" X 31 1/2" GALVANIZED IRON PIPE WITH A 3 1/4" BRASS DISK CONCRETED IN THE TOP, FLUSH WITH GROUND LEVEL, MARKED AS SHOWN ON PAGE 2 OF 2 SET 6 FOOT ORANGE CARSONITE "SURVEY MARKER" POST 0 5 FEET WEST OF CORNER MONUMENT

**D. FIR FOREST**



**NEW ACCESSORIES**

- 1 SET REBAR (SEE LEGEND) 7" BELOW GROUND LEVEL S25°50'E, 23 11 FEET
- 2 SET REBAR (SEE LEGEND) 11" BELOW GROUND LEVEL S65°15'W, 22 74 FEET
- 3 14" D FIR FACE SCRIBED "DLC47BT" N15°06'E, 24 21 FEET TO FACE SET ALUMINUM NAIL AND PLASTIC WASHER BELOW FACE FOR DISTANCE AND ANGLE MEASUREMENT
- 4 9" D FIR FACE SCRIBED "DLC47BT" N59°01'W, 28 12 FEET TO FACE SET ALUMINUM NAIL AND PLASTIC WASHER BELOW FACE FOR DISTANCE AND ANGLE MEASUREMENT

**NOTES**

COMPASS DECLINATION IS 20' EAST ALL MEASURED DISTANCES AND BEARINGS ARE TO THE CENTER OF THE OBJECT, UNLESS OTHERWISE NOTED ALL BEARING TREES ARE PAINTED AND HAVE A BT TAG ATTACHED, FACING THE CORNER UNLESS OTHERWISE NOTED ALL NEW BEARING TREES HAVE A PLASTIC WASHER (STAMPED "BENTON COUNTY SURVEYOR CORNER RESTORATION") ATTACHED (BY ALUMINUM NAIL) TO THE FACE, BELOW THE "BT" FOR DISTANCE AND ANGLE MEASUREMENT UNLESS OTHERWISE NOTED THE DRAWING IS FROM AUTOCAD RELEASE 2006

THIS RESTORATION WAS PERFORMED AT THE DIRECTION AND APROVAL OF THE BENTON COUNTY SURVEYOR rw

FIRM/AGENCY BENTON COUNTY SURVEYOR'S OFFICE  
 ADDRESS 360 SW AVERY AVE CORVALLIS OR 97333, PH 766-6821  
 PRESENT DAVID M DEAN, P.L.S., BERNIE ALTENBACH, SURVEY TECH  
 AND BRAD BOWSHER, SURVEY TECH  
 EQUIPMENT LEICA TCR 1105 WITH TDS ON BOARD

REGISTERED  
PROFESSIONAL  
LAND SURVEYOR

7/10/06 David M. Dean

OREGON  
JULY 13, 1984  
DAVID M. DEAN  
2090

RENEWAL DATE 12/31/07

106847010

REMONUMENTING NE COR. RICHARD TATUM

DLC # 47, T10S R6W

Fd SW GLO BT - NOW ROTTEN REMAINS  
OF  $\pm 40'$  W. OAK STUMP NO MKS FOUND

FACE ROTTED OUT. Fd LINE TREE - NOW

$\pm 50'$  D. FIR SNAG VERY ROTTEN - ONLY

CTR  $\pm 12'$  REMAIN W/ LOWER BARK RINGS.

BRS S89-54-21W, 1134.63' TO CTR. (RECORD WEST

1131.24'). Fd NW COR CHAMBERS DLC # 46

(SEE PG. 19) BRS S0-08-49W 995.03' (RECORD =

SOUTH 1003.86). CALC. COR. POSITION Fm

SW GLO BT FROM APPROX. ORIG. FACE AND

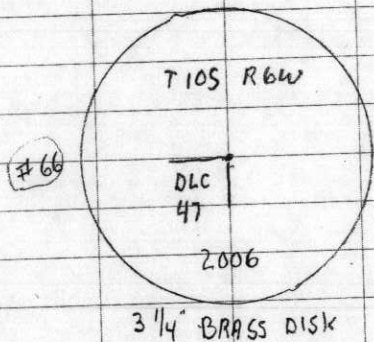
TRUE BEARINGS BASED ON SOLAR OBSERVATION.

AT CALC. COR. SET  $2" \times 3\frac{1}{2}"$  GIP W/  $3\frac{1}{4}"$  BRASS

DISK CONC IN TOP, FLUSH W/ GROUND MKD

AS SHOWN.

SET 6' ORANGE CARSONITE "SURVEY MARKED"  
POST 0<sup>S</sup> WEST OF NEW MON.



CLEAR, WARM 70  
72° F AM, 29.8 Hg  
LEICA TCR 1105/TDS

6/23/06 24/27  
D. DEAN  
B. ALTENBACH  
B. BOWSHER

