

CORNER FILE TRACKING

H:\Survey\Corners\Misc\Filetrac2.doc

06/15/2003

CORNER NUMBER
106850050

STEP	HISTORY()	RESTORATION()
Form Prepared, DB	4/23/07	4/24/07
Field Inspection, DB	4/18/07	4/18/07
Form Checked, DB	5/2/07	5/2/07
Form Edited, DB	5/3/07	5/3/07
Form Signed, DB	5/7/07	5/7/07
Counter Index	4/18/07	4/18/07
GIS Index	4/20/07	4/20/07
Authorize Payment, DB	—————	—————
Archive Digital Files	5/9/07	5/9/07
Collect Documents	4/20/07	4/20/07
Scanned	5/29/07	5/29/07
Copy For Filming	5/9/07	5/9/07
Filed, DB		
Finish index (count unit)	4/18/07	4/18/07
Filmed (Archived), DB		
Document No's to Andrew		

(DB) = Entry needed in database (Access).

COMMENTS:

DATE 04/23/2007

TOWNSHIP 10 SOUTH, RANGE 06 WEST, WILLAMETTE MERIDIAN; SECTION 15 CORNER N/A
 DONATION LAND CLAIM JAMES GREER NO. 50 CORNER WEST-SOUTHWEST

COMMON CORNER(S):

POINT ON NORTH LINE OF SAMUEL RICE D L C NO 45

RECORDS (INFORMATION IN BOLD ITALICS IS COUNTY STAFFS' INTERPRETATION OF THE RECORD)

BASED ON EXTENSIVE RESEARCH AND RECOVERY OF EVIDENCE, THIS OFFICE HAS DETERMINED THAT MOST GENERAL LAND OFFICE SURVEYORS MEASURED TO THE FACE OF BEARING TREES

- [01] GENERAL LAND OFFICE (GLO) NOTES BY D HATHORN, D S , DATED DECEMBER 14, 1854 SET A 10"x10"x24" STONE. MARKED A 12" BALM S80°E 121 LKS. (79.86 FT.) AND A 15" ALDER S73°W 149 LKS. (98.34 FT.).
- [02] COUNTY SURVEY NO 565 (OLD NO 253) FIELD NOTES (BOOK 21, PAGE 75) BY W C GALLOWAY, C S , DATED SEPTEMBER 12, 1916 FOUND ORIGINAL 10"x10"x24" CORNER STONE. MARKED A 7" OAK N85°10'E 0.848 CHS. (55.97 FT.) AND A 10" OAK S07°50'W 0.217 CHS. (14.32 FT.).
- [03] CORNER RESTORATION BOOK NO 1, PAGE 110 BY W C GALLOWAY, C.S , DATED SEPTEMBER 12, 1916 FOUND ORIGINAL 10"x10"x24" CORNER STONE, WITH FIGURES ON IT. MARKED A 7" OAK N85°10'E 0.848 CHS. (55.97 FT.) AND A 10" OAK S07°50'W 0.217 CHS. (14.32 FT.).
- [04] CORNER RESTORATION NO 434 TRANSCRIBED FROM RECORD [03] AND MAY CONTAIN ERRORS AND/OR OMISSIONS.
- [05] BENTON COUNTY MAP NO 10-6-00004 BY W C GALLOWAY, C S , DATED SEPTEMBER 27, 1916 ORIGINAL 10"x10"x24" STONE. 7" OAK N85°10'E 0.848 CHS. (55.97 FT.). 10" OAK S07°50'W 0.217 CHS. (14.32 FT.).
- [06] COUNTY SURVEY NO 1142 (OLD NO 147) BY W C GALLOWAY, C S , DATED JUNE 8, 1931 FOUND STONE.
- [07] BENTON COUNTY MAP NO 10-6-00017, NO DATE OR DRAFTSMAN GIVEN 10"x10"x24" STONE. 7" OAK N85°10'E 0.848 CHS. (55.97 FT.). 10" OAK S07°50'W 0.217 CHS. (14.32 FT.).
- [08] COUNTY SURVEY NO 4317 BY RALPH WILKINSON, P E , DATED AUGUST 1966. FOUND STONE 30"x10"x24".
- [09] COUNTY SURVEY NO 7091 BY RUSSELL PINARD, P L S , DATED JUNE 30, 1980 FOUND STONE. SET LEAD PLUG AND TACK.
- [10] BENTON COUNTY CORNER RESTORATION FIELD NOTES (BOOK 2, PAGE 47) BY CURT LIESENFELT, P L S , DATED MARCH 18, 1991 FOUND A 13"x18"x7" STONE WITH A LEAD PLUG AND TACK (GLO STONE). FOUND A 24" OAK (CSBT) S07°30'E 13.55 FT. FOUND A 3/4" REBAR S18°30'E 156.48 FT. MARKED A 24" OAK N67°15'E 68.19 FT., FACE SCRIBED "DLC50BT", A 19" OAK S40°30'E 27.37 FT., FACES SCRIBED "DLC45BT" AND A THE 21" EASTERLY TRUNK OF A TWIN OAK N80°W 19.69 FT., FACE SCRIBED "DLC50BT".
- [11] CORNER RESTORATION NO 3899 BY CURT LIESENFELT, P L S , DATED MARCH 18, 1991. FOUND A 13"x18"x7" STONE WITH A LEAD PLUG AND TACK (GLO STONE). FOUND A 24" OAK (CSBT) S07°30'E 13.55 FT. FOUND A 3/4" REBAR S18°30'E 156.48 FT. MARKED A 24" OAK N67°15'E 68.19 FT., FACE SCRIBED "DLC50BT", A 19" OAK S40°30'E 27.37 FT., FACES SCRIBED "DLC45BT" AND A THE 21" EASTERLY TRUNK OF A TWIN OAK N80°W 19.69 FT., FACE SCRIBED "DLC50BT".

NOTES:

THIS IS A MICROSOFT WORD 2003 DOCUMENT NAMED "06850050" CREATED FROM A BOILER PLATE DOCUMENT NAMED "HISTORY", WHICH HAS A STYLESHEET NAMED "CORNER" ATTACHED TO IT

FIRM/AGENCY: BENTON COUNTY SURVEYOR'S OFFICE
ADDRESS: 360 S.W AVERY AVE CORVALLIS OR 97333, PH. 766-6821
RESEARCH BY: BERNARD S ALTENBACH, ENGINEER/SURVEY TECH
DATA ENTRY BY: SAME

SEE CORNER HISTORY FORM FOR RECORDS ETC.

CORNER RESTORATION FIELD BOOK NUMBER 25 PAGE(S) 20 DATE 04/18/2007
TOWNSHIP 10 SOUTH, RANGE 6 WEST, WILLAMETTE MERIDIAN; SECTION 15 CORNER NONE
DONATION LAND CLAIM JAMES GREER NO. 50 CORNER WEST SOUTHWEST
CONDITION REPORT _____ REFERENCED OUT _____; RENEWED XX; SURVEYED IN _____

LOCATION AND COMMENTS:

CORNER IS LOCATED ON THE WESTERLY SIDE OF DRIVEWAY TO 24477 MAXFIELD CREEK ROAD AND ±50 FEET NORTHERLY OF MAXFIELD CREEK TO REACH CORNER FROM THE JUNCTION OF PIT ROAD AND MAXFIELD ROAD, TRAVEL WESTERLY ON MAXFIELD ROAD FOR 350 FEET, THEN RIGHT ON DRIVEWAY TO 24477 MAXFIELD CREEK ROAD FOR 150 FEET TO CORNER CORNER IS POOR FOR PREMARKING AND GPS CONTROL

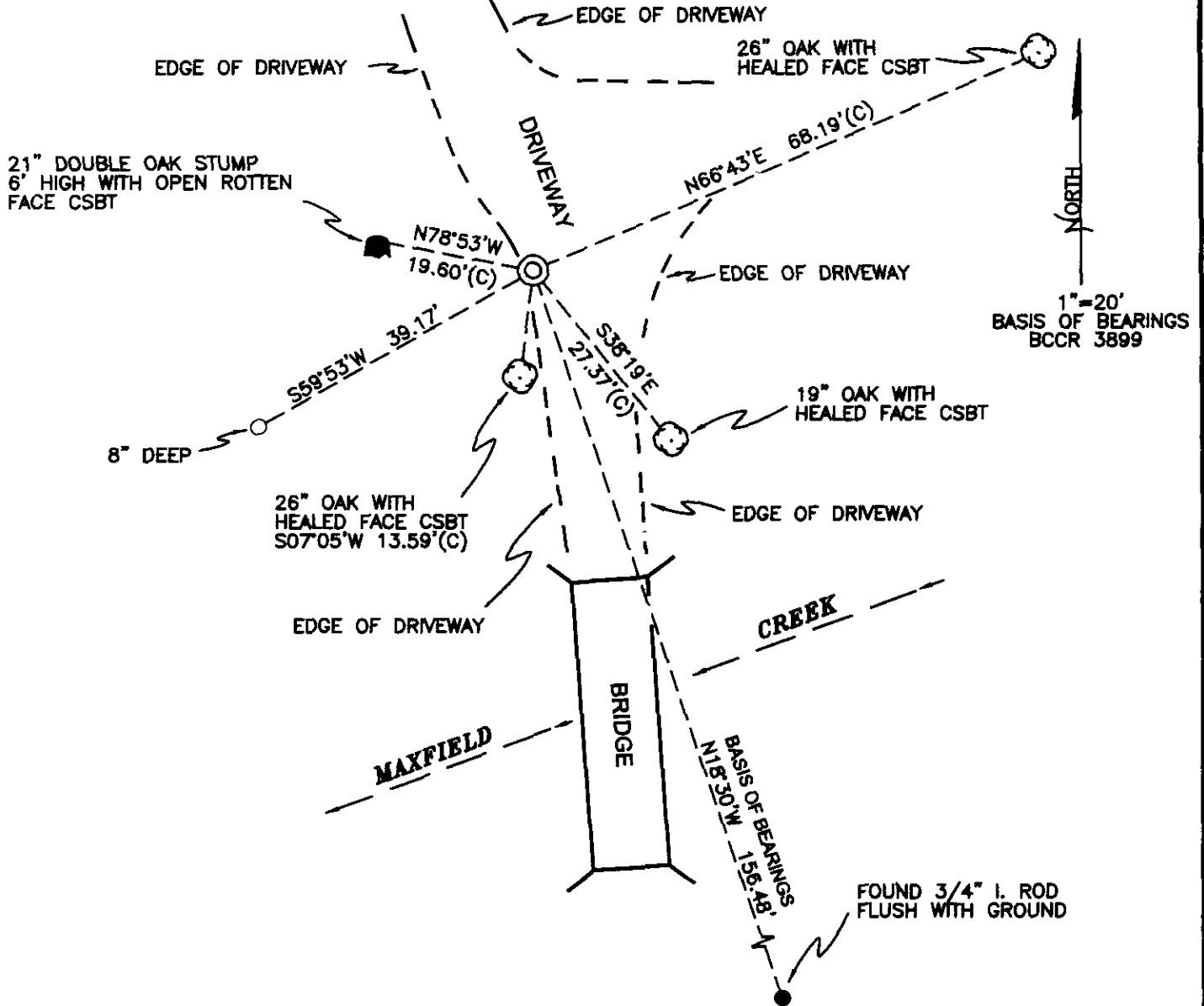
MONUMENTS AND ACCESSORIES FOUND (CONDITION AND SOURCE):

- 1 FOUND 8 PIECES OF BROKEN STONE (APPROXIMATELY 1700 CUBIC INCHES) 6" BELOW GROUND LEVEL ONE PIECE OF BROKEN STONE HAD A LEAD PLUG AND TACK EXACT POSITION OF CORNER COULD NOT BE DETERMINED FROM THIS OBLITERATED EVIDENCE CORNER POSITION WAS DETERMINED FROM EXISTING REFERENCES AS NOTED BELOW IN "MONUMENT SET (PROCEDURES AND DESCRIPTION)"
(SET 10" X 10" X 24" STONE PER RECORD [01])
(FOUND ORIGINAL CORNER STONE PER RECORDS [02], [03] AND [05])
(FOUND STONE PER RECORD [06])
(10" X 10" X 24" STONE PER RECORDS [07] AND [08])
(FOUND STONE SET LEAD PLUG AND TACK PER RECORD [09])
(FOUND 13" X 18" X ? STONE WITH LEAD PLUG AND TACK PER RECORDS [10] AND [11])
- 2 FOUND 26" OAK WITH HEALED FACE, S7°05'W, 13 59 FEET TO CENTER SET ALUMINUM NAIL AND PLASTIC WASHER IN EASTERLY BASE FOR DISTANCE MEASUREMENT
(MARKED 10" OAK, S7°50'W, 14 32 FEET PER RECORDS [02] AND [03])
(10" OAK, S7°50'W, 14 32 FEET PER RECORDS [05] AND [07])
(FOUND 24" OAK, S7°30'E, 13 55 FEET PER RECORDS [10] AND [11])
- 3 FOUND 26" OAK WITH HEALED FACE, N66°43'E, 68 19 FEET TO CENTER FOUND P K NAIL IN NORTHWESTERLY BASE FOR DISTANCE MEASUREMENT
(MARKED 24" OAK, N67°15'E, 68 19 FEET PER RECORDS [10] AND [11])
- 4 FOUND 19" OAK WITH HEALED FACE, S38°19'E, 27 37 FEET TO CENTER SET ALUMINUM NAIL AND PLASTIC WASHER IN SOUTHWESTERLY BASE FOR DISTANCE MEASUREMENT
(MARKED 19" OAK, S40°30'E, 27 37 FEET PER RECORDS [10] AND [11])
- 5 FOUND 21" X 6' TALL, DOUBLE OAK SAWED STUMP WITH ROTTEN FACE, N78°53'W, 19 60 FEET TO CENTER FOUND PK NAIL IN SOUTHERLY BASE FOR DISTANCE MEASUREMENT
(MARKED 21" EASTERLY TRUNK OF TWIN OAK, N80°W, 19 69 FEET PER RECORDS [10] AND [11])
- 6 FOUND 3/4" IRON ROD, FLUSH WITH GROUND, S18°30'E, 156 48 FEET BASIS OF BEARINGS FOR THIS RESTORATION.
(FOUND 3/4" REBAR, S18°30'E, 156.48 FEET PER RECORDS [10] AND [11])

MONUMENT SET (PROCEDURES AND DESCRIPTION).

POSITION OF CORNER WAS DETERMINED BY DISTANCE/DISTANCE INTERSECTION FROM THE FOUND 3/4" IRON ROD (156 48 FEET) AND THE FOUND NORTHEAST 24" OAK BEARING TREE (68 19 FEET) DISTANCE FROM THE 26" OAK WAS CALCULATED FROM THE RECOVERED P K NAIL LOCATED IN THE NORTHWEST BASE OF SAID OAK THIS RESOLUTION FITS NICELY WITH THE OTHER THREE RECOVERED ACCESSORIES

AT SAID DISTANCE/DISTANCE INTERSECTION, SET A 2" X 31 1/2" GALVANIZED IRON PIPE WITH A 3 1/4" BRASS DISK CONCRETED IN THE TOP, 9" BELOW ROAD SURFACE AND MARKED AS SHOWN ON PAGE 2 OF 2 SET A 6 FOOT ORANGE CARSONITE "SURVEY MARKER" POST 3 FEET WEST OF NEW MONUMENT



MONUMENT DETAIL



LEGEND

- SET 5/8" X 30" REBAR WITH YELLOW PLASTIC CAP MKD "BENTON COUNTY SURVEYOR"
- FOUND MONUMENT AS NOTED
- (C) MEASUREMENT TO CENTER
- ⊙ GOVERNMENT MONUMENT SET AS SHOWN
- ⊕ BEARING TREE AS NOTED
- BCCR BENTON COUNTY CORNER RESTORATION
- CSBT COUNTY SURVEYORS BEARING TREE
- ⊖ BEARING TREE STUMP AS NOTED

NEW ACCESSORIES.

- 1 SET REBAR (SEE LEGEND) 8" BELOW GROUND LEVEL S59°53'W, 39.17 FEET

NOTES

COMPASS DECLINATION IS 20° EAST. ALL MEASURED DISTANCES AND BEARINGS ARE TO THE CENTER OF THE OBJECT, UNLESS OTHERWISE NOTED. ALL BEARING TREES ARE PAINTED AND HAVE A B.T. TAG ATTACHED, FACING THE CORNER UNLESS OTHERWISE NOTED. ALL NEW BEARING TREES HAVE A PLASTIC WASHER (STAMPED "BENTON COUNTY SURVEYOR CORNER RESTORATION") ATTACHED (BY ALUMINUM NAIL) TO THE FACE, BELOW THE "BT" FOR DISTANCE AND ANGLE MEASUREMENT UNLESS OTHERWISE NOTED. THE DRAWING IS FROM AUTOCAD RELEASE 2006

THIS RESTORATION WAS PERFORMED AT THE DIRECTION AND APPROVAL OF THE BENTON COUNTY SURVEYOR, RW

FIRM/AGENCY BENTON COUNTY SURVEYOR'S OFFICE
 ADDRESS: 360 S.W. AVERY AVE. CORVALLIS OR 97333; PH. 766-6821
 PRESENT DAVID M. DEAN, P.L.S. AND BERNIE ALTENBACH, SURVEY TECH.
 EQUIPMENT. LEICA TCR 1105 WITH TDS SOFTWARE ON BOARD

5/7/07 *David M. Dean*

REGISTERED PROFESSIONAL LAND SURVEYOR

OREGON
 JULY 13, 1984
 DAVID M. DEAN
 2090

RENEWAL DATE: 12/31/07

BENTON COUNTY CORNER RESTORATION FORM

3899

TOWNSHIP 10 S RANGE 6 W SECTION 15 D.L.C. JAMES GREER NO. 50 CORNER W-SW
 DATE 3/18/91 CORNER RESTORATION FIELD BOOK NUMBER 2 PAGE(S) 47

CORNER DESIGNATION:

THE WEST-SOUTHWEST CORNER OF THE JAMES GREER
 DLC NO. 50, IN T 10 S, R 6 W, WILLAMETTE MERIDIAN.

DLC 50	_____	CONDITION REPORT ONLY
DLC 45	XX	REFERENCED OUT
	_____	RENEWED
	_____	SURVEYED IN

LOCATION AND COMMENTS:

THE CORNER IS LOCATED IN THE WESTERLY EDGE OF A GRAVEL DRIVE TO THE RESIDENCE AT 24477 MAXFIELD CREEK ROAD (COUNTY ROAD NO. 06580) AND APPROXIMATELY 60 FEET NORTHERLY FROM THE CENTERLINE OF MAXFIELD CREEK.

PREVIOUS RENEWALS/SURVEYS, ETC.:

ORIGINAL GLO SURVEY BY DENNIS HATHORN DATED 1856.
 COUNTY SURVEY NO. 565 BY W.C. GALLOWAY DATED SEPTEMBER 12, 1916.
 OLD CORNER RESTORATION BOOK NO. 1 PAGE 110 BY W.C. GALLOWAY DATED SEPTEMBER 12, 1916.
 CORNER RESTORATION NO. 434 BY W.C. GALLOWAY DATED SEPTEMBER 12, 1916.
 COUNTY SURVEY NO. 1142 BY W.C. GALLOWAY DATED MAY OF 1931.
 COUNTY SURVEY NO. 7091 BY RUSSEL PINARD DATED JUNE 30, 1980.

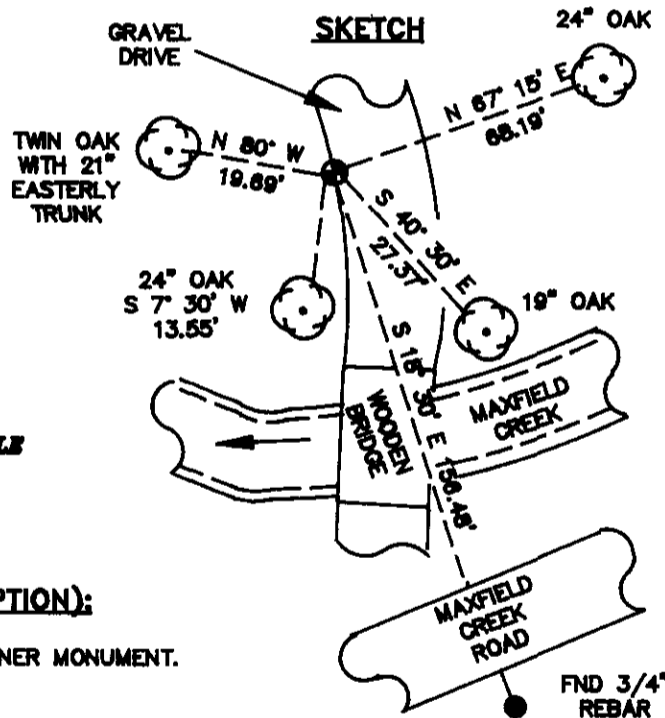
MONUMENTS AND ACCESSORIES FOUND (CONDITION AND SOURCE):

FOUND: 13" X 18" X 9" STONE WITH A LEAD PLUG AND TACK IN THE TOP CENTER FOR THE CORNER (COUNTY SURVEY NO. 7091).
 FOUND: AN OAK 24" IN DIAMETER BEARS S 7° 30' W 13.55 FEET (10" DIAM. S 7° 20' W 14.32 FEET COUNTY SURVEY NO. 565). SET A PK NAIL AND B.C.B.W. IN THE EASTERLY BASE. SET A B.T. TAG ON THE NORTHERLY FACE.
 NO OTHER RECORD BEARING OBJECTS WERE RECOVERED.

MONUMENT DETAIL



SKETCH



MONUMENT SET (PROCEDURES AND DESCRIPTION):

THE STONE AS RECOVERED WILL BE USED FOR THE CORNER MONUMENT.

NEW ACCESSORIES:

AN OAK 24" IN DIAMETER BEARS N 67° 15' E 68.19 FEET, FACED AND SCRIBED "DLC 50 BT". SET A PK NAIL AND B.C.B.W. IN THE NORTHWESTERLY BASE. SET A B.T. TAG ON THE SOUTHWESTERLY FACE.
 AN OAK 19" IN DIAMETER BEARS S 40° 30' E 27.37 FEET, FACED AND SCRIBED "DLC 45 BT". SET A PK NAIL AND B.C.B.W. IN THE SOUTHWESTERLY BASE. SET A B.T. TAG ON THE NORTHWESTERLY FACE.
 FOUND: 3/4" REBAR AT THE SPIRAL POINT OF CURVE STATION NO. 71+29.31 30 FEET RIGHT, (PLAN OF COUNTY ROAD NO. 06580) BEARS S 18° 30' E 156.48 FEET. THE REBAR IS 1.1 FEET NORTHERLY FROM AN EAST-WEST WOVEN AND ELECTRIC WIRE FENCE.
 A TWIN OAK WITH THE EASTERLY TRUNK 21" IN DIAMETER BEARS N 80° W 19.69 FEET, FACED AND SCRIBED "DLC 50 BT". SET A PK NAIL AND B.C.B.W. IN THE SOUTHERLY BASE. SET A B.T. TAG ON THE EASTERLY FACE.
 SET: ORANGE FIBERGLASS "SURVEY MARKER" POST 1 FOOT WESTERLY.

NOTES:

B.C.B.W. IS A BRASS WASHER STAMPED "BENTON COUNTY SURVEYOR". COMPASS DECLINATION IS 20° EAST. ALL MEASURED DISTANCES AND COMPASS BEARINGS ARE TO THE CENTER OF THE OBJECT, UNLESS OTHERWISE NOTED.
 THIS RESTORATION WAS PERFORMED AT THE DIRECTION AND APPROVAL OF THE BENTON COUNTY SURVEYOR. *[Signature]*

FIRM/AGENCY: BENTON COUNTY SURVEYOR
ADDRESS: 360 S.W. AVERY AVE. CORVALLIS OR. 97333; PH. 757-6821
SURVEY CREW: CURTIS J. LIESENFELT & MARK E. ANDERSON
WITNESS:

**REGISTERED
 PROFESSIONAL
 LAND SURVEYOR**

Curtis J. Liesenfelt

**OREGON
 JULY 17, 1986
 CURTIS J. LIESENFELT
 2213**

4/18/07

D. DEAN
B. ALTEN BACH

CLDY, COOL
41°F 29.7" Hg
LEICA TCR 110SITDS

106850050

REMONUMENTING WSW JAMES GREER

DIC No. 50 T 10S R6W

FOUND 14" x 12" x 10" STONE BROKEN IN

5 OR 6 PIECES w/ LEAD & TACK IN ONE

PIECE 8" BELOW GROUND LEVEL AT

WLY EDGE OF DRIVEWAY - TIED EXISTING

REF'S FM REST # 3899 AND CALG. COR

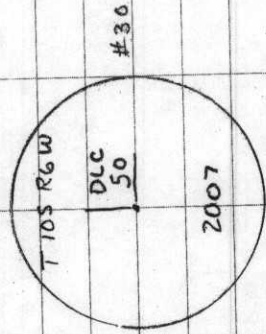
POSITION. REMOVED STONE PIECES AND

SET 2' x 3 1/2" G.I.P. w/ 3/4" BRASS DISK

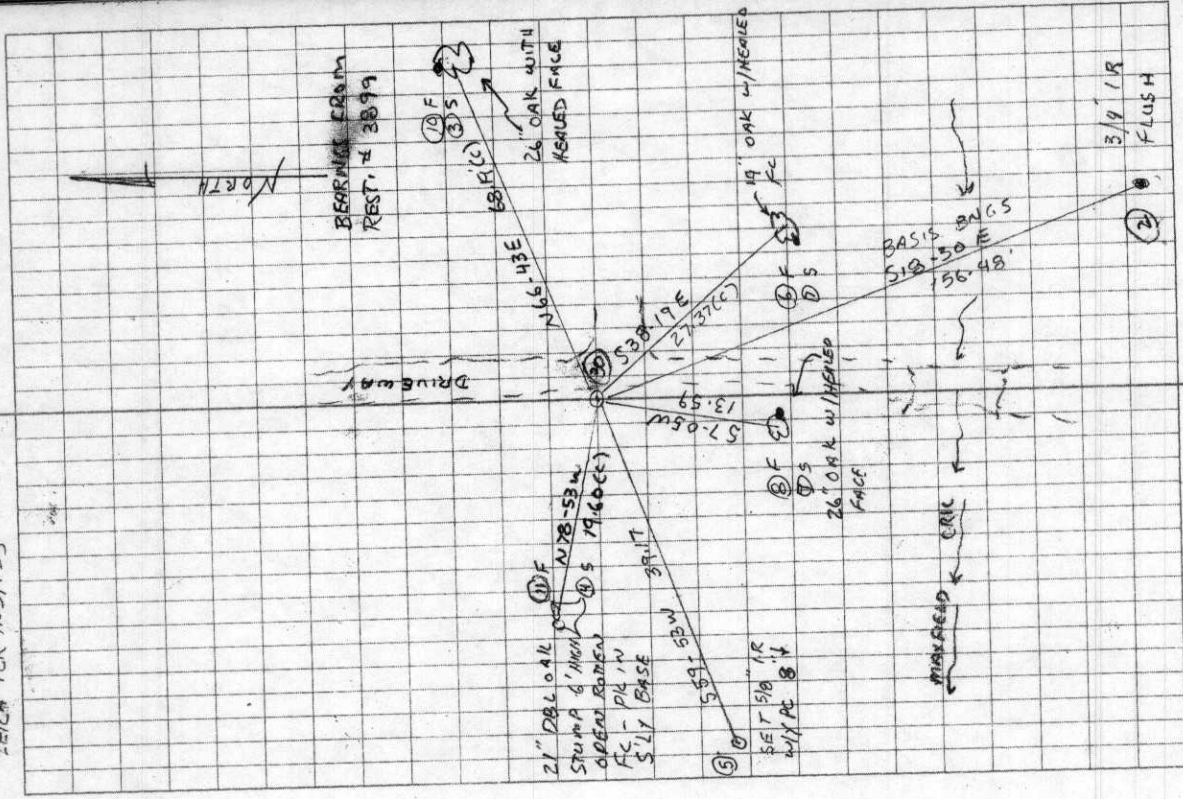
CONC. IN TOP 9" DEEP AND MKD AS

SHOWN. DEPOSITED STONE PIECES AROUND

NEW MON. SET 6' CARBONITE POST 3' WEST.



3/4" BRASS DISK



Most west S. W. corner of James Greer DLC 50, Twp. 10 S., R. 6 W.

Reestablishment by W. C. Galloway

September 12, 1916

Stone 10" x 10" x 24", original corner stone with figures on.

Oak 7" in diam bears N 84° 40' E .848 chains

Oak 10" in diam bears S 7° 20' E .217 chains

Witnesses H. T., Walter, and Elmer Maxfield and C. E. Rice.

C.S. 93
Notes taken in
Road # 382

S.E. corner of D.D. Strouds D.L.C. # 44 T. 11 S. R. 4 W. C.S. 93
iron. Rail splice set.
Oak 18" in dia. bears S. 88° W. .20 chs. std.
Walnut 3" " " N. 10° 40' W. .515 " not marked
To near rail on main line .364 "
Witness Walter E. Head July 25, 1916.

N.E. corner of W^m Taylor D.L.C. # 46 T. 11 S. R. 4 W.
Gun bbl under a stone 12"x10"x6" lying flat with hole 1/2" deep in center. Set.
West corner of concrete N. 9° 20' W. 1.159 chs.
Walnut 1" in dia. bears N. 51° 08' E. .835 chs. not marked.
Oak 18" " " S. 2° W. .205 "
Witness W. E. Wood. July 25 1916.

C.S. Road # 380
Connected with
C.S. # 208
Witnesses
R. L. Jones & Oliver
Rogers

S.E. corner of W^m W. Wilkerson D.L.C. # 53 T. 13 S. R. 6 W.
Set a Qt. bottle orig. cor.
Fir 14" in dia. bears N. 43° E. .12 chs. std.
Mkd. " 22" " " S. 24° E. .607 "
Aug. 10, 1916.

S.W. corner of W^m W. Wilkerson D.L.C. # 53 T. 13 S. R. 6 W.
Set 1" pipe
Oak 20" in dia. bears N. 4° 30' E. .663 chs. std.
Mkd. Fir 12" " " N. 24° 30' E. .618 "
" Fir 25" " " S. 82° E. .723 "
Aug. 11, 1916.

S.E. cor. of W^m Bennett Cl. # 50 T. 13 S. R. 6 W.
Set a 1" pipe S.E. oak down yew stake found standing.
Fir 18" in dia. bears S. 89° E. 1.73 chs. std.
Mkd. " 14" " " S. 35° 30' W. .305 "
Aug. 11, 1916.

N.W. of W^m Ouivey D.L.C. # 54 T. 13 S. R. 6 W.
Stone 10"x12"x24" lying nearly flat. Set it up on end & mkd.
Marked fir 2" in dia. bears N. 25° 45' E. .176 chs.
" " 12" " " N. 65° 30' W. 1.180 "
Aug. 11, 1916.

C.S. # 253
continued on
See Page 114

Most West S.W. cor. of James Greer D.L.C. # 50 T. 10 S. R. 6 W.
Stone 10"x10"x24" Orig. stone with figures on.
Mkd. Oak 7" in dia. bears N. 84° 40' E. .848 chs.
" " 10" " " S. 7° 20' E. .217 "
Witnesses H.T. Walters & Elmer Maxfield & C.E. Rice Sept. 12, 1916.

N.E. corner of Samuel Rice D.L.C. # 45 T. 10 S. R. 6 W.
Orig. stone with figures on. 6"x10"x15" N.E. oak down. stamp.
Marked Oak 10" in dia. bears S. 48° 15' E. 3.718 chs.
" " 12" " " N. 89° 30' W. 3.293 "
Witnesses as above and Bruce Miller. Sept. 12, 1916.

C.S. 93
Notes taken in
Road # 382

S.E. corner of D.D. Strouds D.L.C. #44 T. 11 S. R. 4 W. CS
iron. Rail splice set.
Oak 18" in dia. bears S. 88° W. .20 chs. std.
Walnut 3" " " N. 10° 40' W. .515 " not marked
To near rail on main line .364 "
Witness Walter E. Head July 25, 1916.

N.E. corner of W^m Taylor D.L.C. #46 T. 11 S. R. 4 W.
Gun bbl under a stone 12"x10"x6" lying flat with hole 1/2" deep in center. Set.
West corner of concrete N. 9° 20' W. 1.159 chs.
Walnut 1" in dia. bears N. 51° 08' E. .835 chs. not marked.
Oak 18" " " S. 2° W. .205 "
Witness W. E. Wood. July 25 1916.

C.S. Road #380
Connected with
C.S. # 208
Witnesses
R. L. Jones & Oliver
Rogers

S.E. corner of W^m W. Wilkerson D.L.C. #53 T. 13 S. R. 6 W.
Set a Qt. bottle orig. cor.
Fir 14" in dia. bears N. 43° E. .12 chs. std.
Mk. " 22" " " S. 24° E. .607 "
Aug. 10, 1916.

S.W. corner of W^m W. Wilkerson D.L.C. #53 T. 13 S. R. 6 W.
Set 1" pipe
Oak 20" in dia. bears N. 4° 30' E. .663 chs. std.
Mk. Fir 12" " " N. 24° 30' E. .618 "
" Fir 25" " " S. 82° E. .723 "
Aug. 11, 1916.

S.E. cor. of W^m Bennett Cl. #50 T. 13 S. R. 6 W.
Set a 1" pipe S.E. oak down yew stake found standing.
Fir 18" in dia. bears S. 89° E. 1.73 chs. std.
Mk. " 14" " " S. 35° 30' W. .305 "
Aug. 11, 1916.

N.W. of W^m Ouivey D.L.C. #54 T. 13 S. R. 6 W.
Stone 10"x12"x24" lying nearly flat. Set it up on end & mkd.
Marked fir 2" in dia. bears N. 25° 45' E. .176 chs.
" " 12" " " N. 65° 30' W. 1.180 "
Aug. 11, 1916.

C.S. #253
Continued on
Sec. Page 114

Most West S.W. cor. of James Greer D.L.C. #50 T. 10 S. R. 6 W.
Stone 10"x10"x24" Orig. stone with figures on.
Mk. Oak 7" in dia. bears N. 84° 40' E. .848 chs.
" " 10" " " S. 7° 20' E. .217 "
Witnesses H.T., Walter & Elmer Maxfield & C.E. Rice Sept. 12, 1916.

N.E. corner of Samuel Rice D.L.C. #45 T. 10 S. R. 6 W.
Orig. stone with figures on. 6"x10"x15" N.E. oak down. stamp.
Marked Oak 10" in dia. bears S. 48° 15' E. 3.718 chs.
" " 12" " " N. 89° 30' W. 3.293 "
Witnesses as above and Bruce Miller. Sept. 12, 1916.

Most west S. W. corner of James Greer DLC 50, Twp. 10 S., R. 6 W.

Reestablishment by W. C. Galloway

September 12, 1916

Stone 10" x 10" x 24", original corner stone with figures on.

Oak 7" in diam bears N 84° 40' E .848 chains

Oak 10" in diam bears S 7° 20' E .217 chains

Witnesses H. T., Walter, and Elmer Maxfield and C. E. Rice.

3118/91, SET 15 W. SUB COR. JAMES GREER. DEC. NO. 50
 FND: 13" X 18" X 2" S. STONE @ A LEAD PLUG & TRAK IN THE TOP
 CTG FOR THE COR. (CS # 7091)

" AN ORN 24" IN DIA. BEARS S 73° W ~ 13.55' (10' DIA)
 S 73° W ~ 14.32' CS # 585 SET A PLUG @ C.R. IN THE
 ELY BASE SET @ BT TRK ON THE NW FACE

NO OTHER BEARS BEHIND OBJECTS WERE RECOVERED

THE STOUT AS RECOVERED WILL BE USED FOR THE COR MON.
 AN ORN 24" IN DIA. BEARS N 67° E ~ 68.19' FACED & SCRIBED
 @ 50 BT SET A PLUG @ C.R. IN THE NW BASE SET A
 BT TRK ON THE SW FACE

AN ORN 19" IN DIA. BEARS S 40° 30' E ~ 27.37' FACED & SCRIBED
 @ 45 BT SET A PLUG @ C.R. IN THE SW BASE SET A
 BT TRK ON THE NW FACE

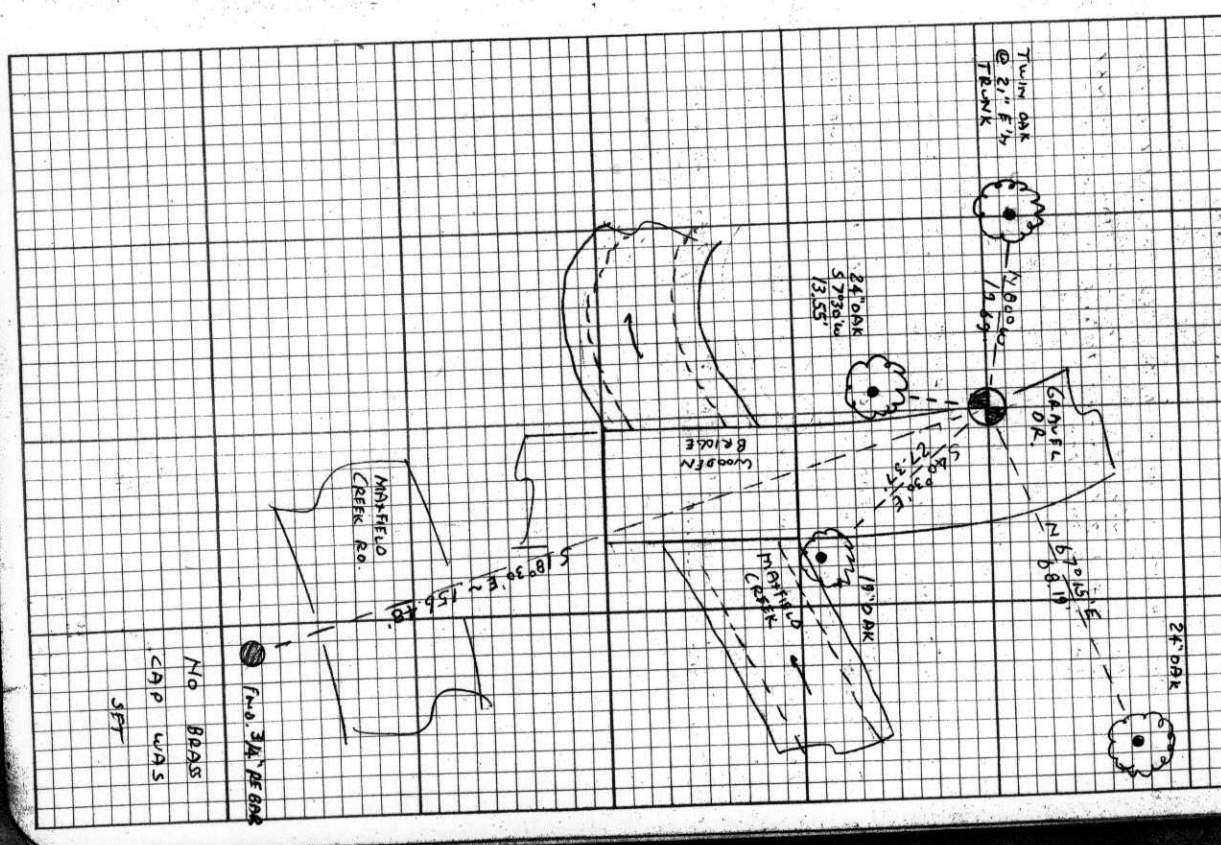
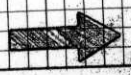
FND: 3/4" BEAR AT F.S.D. STB. 71 + 29.31 30 RT (PLAN OF CO
 RO NO. 05580) BEARS S 18° 30' E ~ 156.48' THE BEAR IS
 1/1" IN DIA. AN E-W WOOD + ELEC. WERE FND.

THE ELY TRUNK
 A TWIN ORN @ 21" IN DIA. BEARS N 80° W ~ 18.89' FACED & SCRIBED
 @ 50 BT SET A PLUG @ C.R. IN THE SW BASE SET A
 BT TRK ON THE ELY FACE

SET: DRANGE FINGERBRASS "SURVEY MARKER" POST 1' W. N.

THE COR IS LOCATED IN THE W. EDGE OF A GROUP OR TO
 THE RESIDENCE AT 2447 MARYFIELD CREEK RD. (CO. RD NO.
 05580) ~ 80' N. FROM THE E. OF MARYFIELD CREEK.
 IT MAY BE OK FOR PREMBRINK & GPS CONTROL

3118/91, SET 15 W. SUB COR. JAMES GREER. DEC. NO. 50
 FND: 13" X 18" X 2" S. STONE @ A LEAD PLUG & TRAK IN THE TOP
 CTG FOR THE COR. (CS # 7091)



NO BRASS
 CAP WAS
 SET

106850050

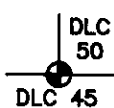
BENTON COUNTY CORNER RESTORATION FORM

3899

TOWNSHIP 10 S RANGE 6 W SECTION 15 D.L.C. JAMES GREER NO. 50 CORNER W-SW
DATE 3/18/91 CORNER RESTORATION FIELD BOOK NUMBER 2 PAGE(S) 47

CORNER DESIGNATION:

THE WEST-SOUTHWEST CORNER OF THE JAMES GREER
DLC NO. 50, IN T 10 S, R 6 W, WILLAMETTE MERIDIAN.



- CONDITION REPORT ONLY
XX REFERENCED OUT
RENEWED
SURVEYED IN

LOCATION AND COMMENTS:

THE CORNER IS LOCATED IN THE WESTERLY EDGE OF A GRAVEL DRIVE TO THE RESIDENCE AT 24477 MAXFIELD CREEK ROAD (COUNTY ROAD NO. 06580) AND APPROXIMATELY 60 FEET NORTHERLY FROM THE CENTERLINE OF MAXFIELD CREEK.

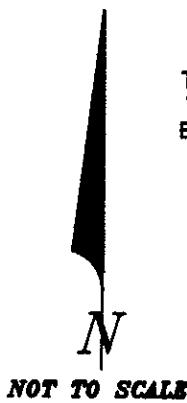
PREVIOUS RENEWALS/SURVEYS, ETC:

- ORIGINAL GLO SURVEY BY DENNIS HATHORN DATED 1856.
COUNTY SURVEY NO. 565 BY W.C. GALLOWAY DATED SEPTEMBER 12, 1916.
OLD CORNER RESTORATION BOOK NO. 1 PAGE 110 BY W.C. GALLOWAY DATED SEPTEMBER 12, 1916.
CORNER RESTORATION NO. 434 BY W.C. GALLOWAY DATED SEPTEMBER 12, 1916.
COUNTY SURVEY NO. 1142 BY W.C. GALLOWAY DATED MAY OF 1931.
COUNTY SURVEY NO. 7091 BY RUSSEL PINARD DATED JUNE 30, 1980.

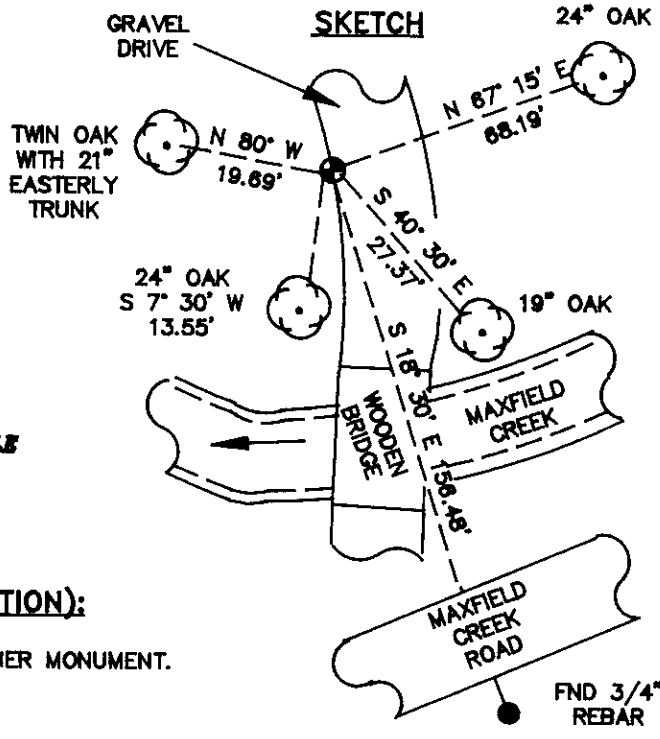
MONUMENTS AND ACCESSORIES FOUND (CONDITION AND SOURCE):

- FOUND: 13" X 18" X ? STONE WITH A LEAD PLUG AND TACK IN THE TOP CENTER FOR THE CORNER (COUNTY SURVEY NO. 7091).
FOUND: AN OAK 24" IN DIAMETER BEARS S 7 30' W 13.55 FEET (10" DIAM. S 7 20' W 14.32 FEET COUNTY SURVEY NO. 565). SET A PK NAIL AND B.C.B.W. IN THE EASTERLY BASE. SET A B.T. TAG ON THE NORTHERLY FACE.
NO OTHER RECORD BEARING OBJECTS WERE RECOVERED.

MONUMENT DETAIL



SKETCH



MONUMENT SET (PROCEDURES AND DESCRIPTION):

THE STONE AS RECOVERED WILL BE USED FOR THE CORNER MONUMENT.

NEW ACCESSORIES:

- AN OAK 24" IN DIAMETER BEARS N 67 15' E 68.19 FEET, FACED AND SCRIBED "DLC 50 BT". SET A PK NAIL AND B.C.B.W. IN THE NORTHWESTERLY BASE. SET A B.T. TAG ON THE SOUTHWESTERLY FACE.
AN OAK 19" IN DIAMETER BEARS S 40 30' E 27.37 FEET, FACED AND SCRIBED "DLC 45 BT". SET A PK NAIL AND B.C.B.W. IN THE SOUTHWESTERLY BASE. SET A B.T. TAG ON THE NORTHWESTERLY FACE.
FOUND: 3/4" REBAR AT THE SPIRAL POINT OF CURVE STATION NO. 71+29.31 30 FEET RIGHT, (PLAN OF COUNTY ROAD NO. 06580) BEARS S 18 30' E 156.48 FEET. THE REBAR IS 1.1 FEET NORTHERLY FROM AN EAST-WEST WOVEN AND ELECTRIC WIRE FENCE.
A TWIN OAK WITH THE EASTERLY TRUNK 21" IN DIAMETER BEARS N 80° W 19.69 FEET, FACED AND SCRIBED "DLC 50 BT". SET A PK NAIL AND B.C.B.W. IN THE SOUTHERLY BASE. SET A B.T. TAG ON THE EASTERLY FACE.
SET: ORANGE FIBERGLASS "SURVEY MARKER" POST 1 FOOT WESTERLY.

NOTES:

B.C.B.W. IS A BRASS WASHER STAMPED "BENTON COUNTY SURVEYOR". COMPASS DECLINATION IS 20° EAST. ALL MEASURED DISTANCES AND COMPASS BEARINGS ARE TO THE CENTER OF THE OBJECT, UNLESS OTHERWISE NOTED.
THIS RESTORATION WAS PERFORMED AT THE DIRECTION AND APPROVAL OF THE BENTON COUNTY SURVEYOR.

FIRM/AGENCY: BENTON COUNTY SURVEYOR
ADDRESS: 360 S.W. AVERY AVE. CORVALLIS OR. 97333; PH. 757-8821
SURVEY CREW: CURTIS J. LIESENFELT & MARK E. ANDERSON
WITNESS:

REGISTERED PROFESSIONAL LAND SURVEYOR
Curtis J. Liesenfelt
OREGON
JULY 17, 1986
CURTIS J. LIESENFELT
2213