

- CS # 253 <sup>West S.</sup>  
 S.W. corner of James Greer D.L.C. # 50 T. 10 S. R 6 W.  
 Set Stone 6"X10"X18" which had been graded by James Greer side  
 Marked Thorn 6" in dia. bears N. 54° 30' E. 557 chs.  
 " Oak 10" " " " S. 23° E. 5701 "  
 Orig. " 10" " " " N. 21° 59' W. 11.77 " std.  
 Witnesses as last corner. Sept. 12, 1916.
- " SE. corner of James Greer D.L.C. # 50 T. 10 S. R. 6 W.  
 Set a 1/2" X 3/8" iron rod  
 Maple 12" in dia. bears S. 40° E. 228 chs. std.  
 Mkd. in 15" " " " S. 23° 40' W. 730 "  
 Oak 10" " " " N. 45° W. 946 " " " " " "  
 Witnesses H.T. Walter & Limer Maxfield, Bruce & Frank Miller Sept. 13, 1916.
- " N.E. corner of James Greer D.L.C. # 50 T. 10 S. R 6 W.  
 Set a Stone 8"X11"X13" hole in top set from Oak stamp & alder stamp <sup>or alder</sup>  
 Mkd. Fir 9" in dia. bears N. 62° 30' E. 202 chs.  
 " 10" " " " N. 34° 30' W. 1032 "  
 Witnesses H.T. & Walter Maxfield & Bruce Miller Sept. 14, 1916.
- " N.W. corner of James Greer D.L.C. # 50 T. 10 S. R 6 W.  
 Set a Stone 6"X6"X14" 8" under surface set from oak & stamp.  
 Oak 20" in dia. bears S. 41° E. 464 chs. std.  
 " Stamp 15" " " " S. 15° E. 373 " "  
 Mkd. 12" " " " S. 0° 30' W. 2821 "  
 Witnesses Walter & H.T. Maxfield & C.F. Rice Sept. 15, 1916.
- " S.E. corner of James W. Bingham D.L.C. # 51 T. 10 S. R 6 W.  
 Set a stone 6"X6"X16" orig. stone gone, set from trees.  
 Mkd. an Oak 5" in dia. bears N. 30° 40' E. 335 chs.  
 Orig. " 30" " " " S. 68° W. 496 " std.  
 " " 15" " " " S. 50° W. 480 " "  
 Witnesses as NE corner. Sept. 14, 1916.
- " 1/4 sec. cor. between secs. 14 & 23 T. 10 S. R. 6 W.  
 Set 1/2" iron rod. Set from ash and fir stamp. checked.  
 Marked W fir. 30" in dia. bears S. 39° W. 610 chs.  
 " W. " 12" " " " N. 48° 30' W. 512 "  
 Ash 4" " " " N 21° E 10 " <sup>Strout gone but</sup> <sup>fork tree S.M.S.</sup>  
 Witnesses Bruce & Frank Miller & John Banks. Sept. 21, 1916.
- " 1/4 sec. cor. bet. sec. 23 & 26 T. 10 S. R 6 W  
 Set 3/4" X 1/4" X 30" iron bar. set from oak down. checked.  
 Mkd. Fir 13" in dia. bears N 65° E. 1065 chs.  
 " 24" " " " N. 65° W. 258 "  
 Witnesses as last corner. Sept. 22, 1916.

N. W. corner of James Greer DLC 50, Twp. 10 S., R. 6 W.

Reestablishment by W. C. Galloway

September 15, 1916

Set a stone 6" x 6" x 14" 8" under surface, set from Oak and stump

Oak 20" in diam bears S 41° E 4.64 chains(standing)

Oak stump 15" in diam bears S 15° E 3.73 chains(standing)

Oak 12" in diam bears S 0° 30' W 2.821 chains

Witnesses Walter and H. T. Maxfield and C. E. Rice

TID'S ROW SEC 15 NW COR JAMES GREER OLC No. 50

FIND: 6" x 9" x 7" STONE @ "ES" CARVED IN THE TOP FOR THE COR. (CS#565)

" AN OAK 49" IN DIA. EVID. OF A HEALED FACE BEARS S 40° 45' E ~ 306.24 (20" DIAM. S 40° E ~ 306.24 ORIG. G.L.D. SURVEY). SET A PK + B.C.B.W. IN THE NW'Y FACE. SET A B.T. TAG ON THE NW'Y FACE.

" AN OAK 14" IN DIAM. BEARS S 0° 30' W ~ 186.19' (10" DIAM. S 0° 30' W ~ 186.19' COR REST. NO. 437). SET A PK + B.C.B.W. IN THE E'Y FACE. SET A B.T. TAG ON THE NW'Y FACE. THIS OAK IS THE E'Y MOST TRUNK IN A GROUP OF 3 OAKS RANGING IN SIZE FROM 14" TO 20" IN DIAM.

NO OTHER RECORD BEARING OBJECTS WERE RECOVERED

DRILLED A 5/16" DIAM. HOLE IN THE TOP CTR. OF THE RECOVERED STONE FOR THE COR POINT.

AN OAK 12" IN DIA. BEARS N 40° 45' E ~ 13.56' FALED & SCRIBED "OLC 51 BT". SET A PK + B.C.B.W. IN THE NW'Y FACE. SET A B.T. TAG ON THE SW'Y FACE.

A FIR 25" IN DIA. BEARS S 34° 45' E ~ 100.87' FALED & SCRIBED "OLC 50 BT". SET A PK + B.C.B.W. IN THE NE'Y FACE. SET A B.T. TAG ON THE NW'Y FACE.

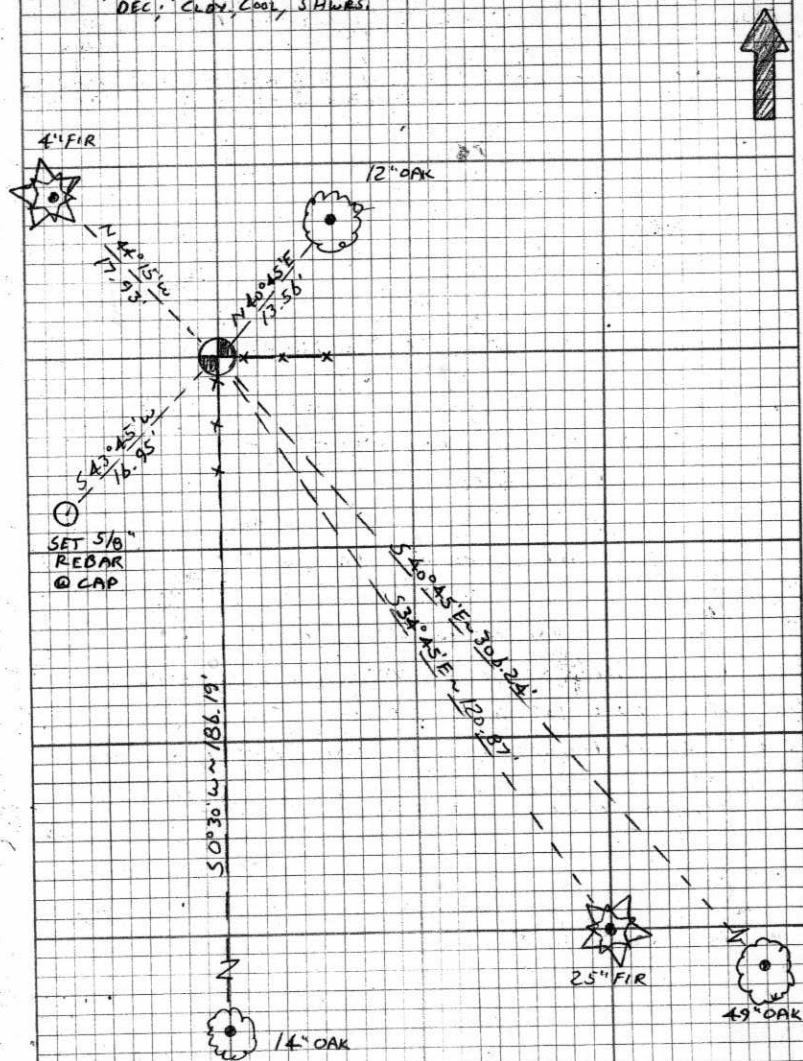
SET: 5/8" x 30" REBAR @ A.Y.P.C. MKD. "BENTON COUNTY SURVEYOR", BEARS S 43° 45' W ~ 16.95'

A FIR  
AN OAK 4" IN DIA. BEARS N 44° 15' W ~ 17.93' FALED & SCRIBED "OLC 56 BT". SET A PK + B.C.B.W. IN THE NE'Y FACE. SET A B.T. TAG ON THE SE'Y FACE.

SET: ORANGE FIBERGLASS "SURVEY STAKE" POST 1' NW'Y

THE COR. IS LOCATED IN A MODERATELY WOODED MEADOW, 1.2' W'Y FROM THE CTR. OF A 1' x 5' WOODEN COR. PK. POST. A G.W. + B.W. FENCE RUNS S + E FROM THE COR. POST. THE COR. MAY BE OK FOR REMARKING + GPS CONTROL.

3/10/91, CTR. OF MEADOW; KVA DATASCOPE, BRUNTON COMP. 20° E 2/48  
DEC: CLAY, COOL, SHURS.



NO BRASS  
CAP WAS  
SET

106850060

# BENTON COUNTY CORNER RESTORATION FORM

3900

TOWNSHIP 10 S RANGE 6 W SECTION 15 D.L.C. JAMES GREER NO. 50 CORNER NW  
DATE 3/18/91 CORNER RESTORATION FIELD BOOK NUMBER 2 PAGE(S) 48

### CORNER DESIGNATION:

THE NORTHWEST CORNER OF THE JAMES GREER DLC NO. 50,  
IN T 10 S, R 6 W, WILLAMETTE MERIDIAN.

|        |                                     |                       |
|--------|-------------------------------------|-----------------------|
| DLC 51 | <input type="checkbox"/>            | CONDITION REPORT ONLY |
| DLC 50 | <input type="checkbox"/>            | REFERENCED OUT        |
|        | <input checked="" type="checkbox"/> | RENEWED               |
|        | <input type="checkbox"/>            | SURVEYED IN           |

### LOCATION AND COMMENTS:

THE CORNER IS LOCATED IN A MODERATELY WOODED MEADOW, 1.2 FEET WESTERLY FROM THE CENTER OF A 1 FOOT SQUARE WOODEN CORNER FENCE POST. A WOVEN AND BARBED WIRE FENCE RUNS SOUTH AND EAST FROM THE CORNER POST.

### PREVIOUS RENEWALS/SURVEYS, ETC:

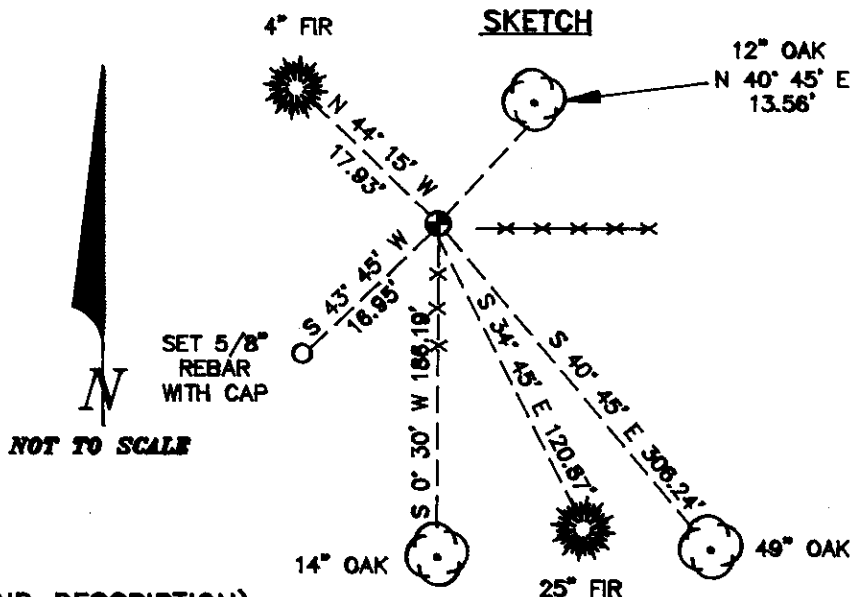
ORIGINAL GLO SURVEY BY DENNIS HATHORN DATED 1856.  
COUNTY SURVEY NO. 585 BY W.C. GALLOWAY DATED SEPTEMBER 12, 1916.  
OLD CORNER RESTORATION BOOK NO. 1 PAGE 111 BY W.C. GALLOWAY DATED SEPTEMBER 15, 1916.  
CORNER RESTORATION NO. 437 BY W.C. GALLOWAY DATED SEPTEMBER 15, 1916.  
MAP NO. 10-6-00004 BY W.C. GALLOWAY DATED SEPTEMBER 27, 1916.  
COUNTY SURVEY NO. 5786 BY KEN WIGHTMAN II DATED OCTOBER 28, 1974.

### MONUMENTS AND ACCESSORIES FOUND (CONDITION AND SOURCE):

FOUND: 6" X 9" X ? STONE WITH "CS" CARVED IN THE TOP FOR THE CORNER (COUNTY SURVEY NO. 585).  
FOUND: AN OAK 49" IN DIAMETER WITH EVIDENCE OF A HEALED FACE, BEARS S 40° 45' E 306.24 FEET (20" DIAM. S 40° E 306.24 FEET ORIGINAL GLO SURVEY). SET A PK NAIL AND B.C.B.W. IN THE NORTHEASTERLY BASE. SET A B.T. TAG ON THE NORTHWESTERLY FACE.  
FOUND: AN OAK 14" IN DIAMETER BEARS S 0° 30' W 186.19 FEET (10" DIAM. S 0° 30' W 186.19 FEET CORNER RESTORATION NO. 437). SET A PK NAIL AND B.C.B.W. IN THE EASTERLY BASE. SET A B.T. TAG ON THE NORTHERLY FACE. THIS OAK IS THE MOST EASTERLY TRUNK OF A GROUP OF 3 OAKS RANGING IN SIZE FROM 14" TO 20" IN DIAMETER.

NO OTHER RECORD BEARING OBJECTS WERE RECOVERED.

### MONUMENT DETAIL



### MONUMENT SET (PROCEDURES AND DESCRIPTION):

DRILLED A 5/16" DIAMETER HOLE IN THE CENTER OF THE RECOVERED STONE FOR THE CORNER POINT.

### NEW ACCESSORIES:

AN OAK 12" IN DIAMETER BEARS N 40° 45' E 13.56 FEET, FACED AND SCRIBED "DLC 51 BT". SET A PK NAIL AND B.C.B.W. IN THE NORTHWESTERLY BASE. SET A B.T. TAG ON THE SOUTHWESTERLY FACE.  
A FIR 25" IN DIAMETER BEARS S 34° 45' E 120.87 FEET, FACED AND SCRIBED "DLC 50 BT". SET A PK NAIL AND B.C.B.W. IN THE NORTHEASTERLY BASE. SET A B.T. TAG ON THE NORTHWESTERLY FACE.  
SET: 5/8" X 30" REBAR WITH A YELLOW PLASTIC CAP MARKED "BENTON COUNTY SURVEYOR" BEARS S 43° 45' W 16.95 FEET.  
A FIR 4" IN DIAMETER BEARS N 44° 15' W 17.93 FEET, FACED AND SCRIBED "X BT". SET A PK NAIL AND B.C.B.W. IN THE NORTHEASTERLY BASE. SET A B.T. TAG ON THE SOUTHEASTERLY FACE.

SET: ORANGE FIBERGLASS "SURVEY STAKE" POST 1 FOOT NORTHWESTERLY.

### NOTES:

B.C.B.W. IS A BRASS WASHER STAMPED "BENTON COUNTY SURVEYOR". COMPASS DECLINATION IS 20° EAST. ALL MEASURED DISTANCES AND COMPASS BEARINGS ARE TO THE CENTER OF THE OBJECT, UNLESS OTHERWISE NOTED.

THIS RESTORATION WAS PERFORMED AT THE DIRECTION AND APPROVAL OF THE BENTON COUNTY SURVEYOR. of

FIRM/AGENCY: BENTON COUNTY SURVEYOR

ADDRESS: 360 S.W. AVERY AVE. CORVALLIS OR. 97333; PH. 757-6821

SURVEY CREW: CURTIS J. LIESENFELT & MARK E. ANDERSON

WITNESS:

REGISTERED  
PROFESSIONAL  
LAND SURVEYOR

*Curtis J. Liesenfelt*

OREGON  
JULY 17, 1986  
CURTIS J. LIESENFELT  
2213