

106851010

CORNER FILE TRACKING

H:\Survey\Corners\Misc\Filetrac2.doc
06/15/2003

CORNER NUMBER
106851010

STEP	HISTORY()	RESTORATION()
Form Prepared, DB	4/26/10	4/26/10
Field Inspection, DB	4/26/10	4/26/10
Finish index (count unit)	4/26/10	4/26/10
Counter Index	4/26/10	4/26/10
GIS Index Form	4/29/10	4/29/10
Checked, DB	4/30/10	4/30/10
Form Edited, DB	4/30/10	4/30/10
Form Signed, DB	4/30/10	4/30/10
Authorize Payment, DB	—	—
Archive Digital Files	5/6/10	5/6/10
Collect Documents	N/A	N/A
PDH File	5/6/10	5/6/10
Copy For Filming	5/6/10	5/6/10
Scanned PDF TO JASON	5/6/10	5/6/10
Filmed (Archived), DB		
Filed, DB		

(DB) = Entry needed in database (Access).

COMMENTS:

DATE 04/26/2010TOWNSHIP 10 SOUTH, RANGE 6 WEST, WILLAMETTE MERIDIAN; SECTION 10 CORNER NONE
DONATION LAND CLAIM JAMES W. BIGHAM NO. 51 CORNER NORTHEAST**COMMON CORNER(S):**

INTERIOR CORNER OF WILLIAM ROBINSON DLC NO. 54

RECORDS (INFORMATION IN *BOLD ITALICS* IS COUNTY STAFFS' INTERPRETATION OF THE RECORD)

BASED ON EXTENSIVE RESEARCH AND RECOVERY OF EVIDENCE, THIS OFFICE HAS DETERMINED THAT MOST GENERAL LAND OFFICE SURVEYORS MEASURED TO THE FACE OF BEARING TREES.

[01] GENERAL LAND OFFICE (GLO) NOTES OF THE JAMES W. BIGHAM DONATION LAND CLAIM (DLC) NO. 51 BY DENNIS HATHORN, D.S. DATED DECEMBER 15, 1854. *EAST . . . INTERSECT LINE BETWEEN SECS 10 & 11 AND SET POST FOR N.E. COR. FROM WHICH A FIR 20 IN DIA BEARS N88°W, 123 LKS (81.18 FEET); A FIR 30 IN DIA BEARS N1°W, 154 LKS (101.64 FEET). THE INTERIOR CORNER WM. ROBINSON'S CLAIM.*

[02] GLO NOTES OF THE WILLIAM ROBINSON DLC NO. 54 BY DENNIS HATHORN, C.S. DATED DECEMBER 16, 1854. *NORTH . . . JAMES W. BIGHAM'S NE COR FROM WHICH A FIR 20 IN DIA BEARS N88°W, 123 LKS (81.18 FEET); A FIR 30 IN DIA BEARS N1°W, 154 LKS (101.64 FEET).*

NOTES:

THIS IS A MICROSOFT WORD 2003 DOCUMENT NAMED "06851010" CREATED FROM A BOILER PLATE DOCUMENT NAMED "HISTORY", WHICH HAS A STYLESHEET NAMED "CORNER" ATTACHED TO IT.

FIRM/AGENCY: BENTON COUNTY SURVEYOR'S OFFICE
ADDRESS: 360 S.W. AVERY AVE. CORVALLIS OR 97333; PH. 766-6821
RESEARCH BY: DAVID M. DEAN, P.L.S.
DATA ENTRY BY: SAME

**BENTON COUNTY CORNER RESTORATION FORM, PAGE 1 OF 2, 106851010R1
SEE CORNER HISTORY FORM FOR RECORDS ETC.**

CORNER RESTORATION FIELD BOOK NUMBER 28 PAGE(S) 43 DATE 04/26/2010
TOWNSHIP 10 SOUTH, RANGE 6 WEST, WILLAMETTE MERIDIAN; SECTION 10 CORNER NONE
DONATION LAND CLAIM JAMES W. BIGMAN NO. 51 CORNER NORTHEAST
CONDITION REPORT ; REFERENCED OUT ; RENEWED XX; SURVEYED IN

LOCATION AND COMMENTS:

CORNER IS LOCATED IN A ±50 YEAR OLD STAND OF D. FIR TIMBER ON A GENTLE NORTH FACING SLOPE. TO REACH CORNER FROM THE JUNCTION OF MAXFIELD CREEK ROAD AND WARD ROAD, TRAVEL NORTHERLY AND WESTERLY ON WARD ROAD FOR 0.99 MILES; THEN LEFT ON PRIVATE STARKER FOREST ROAD (PASSING THROUGH LOCKED GATE) FOR 0.24 MILES; THEN LEFT ON SPUR FOR 0.26 MILES AND PARK; THEN WALK WESTERLY ON OLD DIRT ROAD FOR ±150 FEET, THEN SOUTH FOR APPROXIMATELY 75 FEET TO CORNER. CORNER IS POOR FOR PREMARKING AND GPS CONTROL.

MONUMENTS AND ACCESSORIES FOUND (CONDITION AND SOURCE):

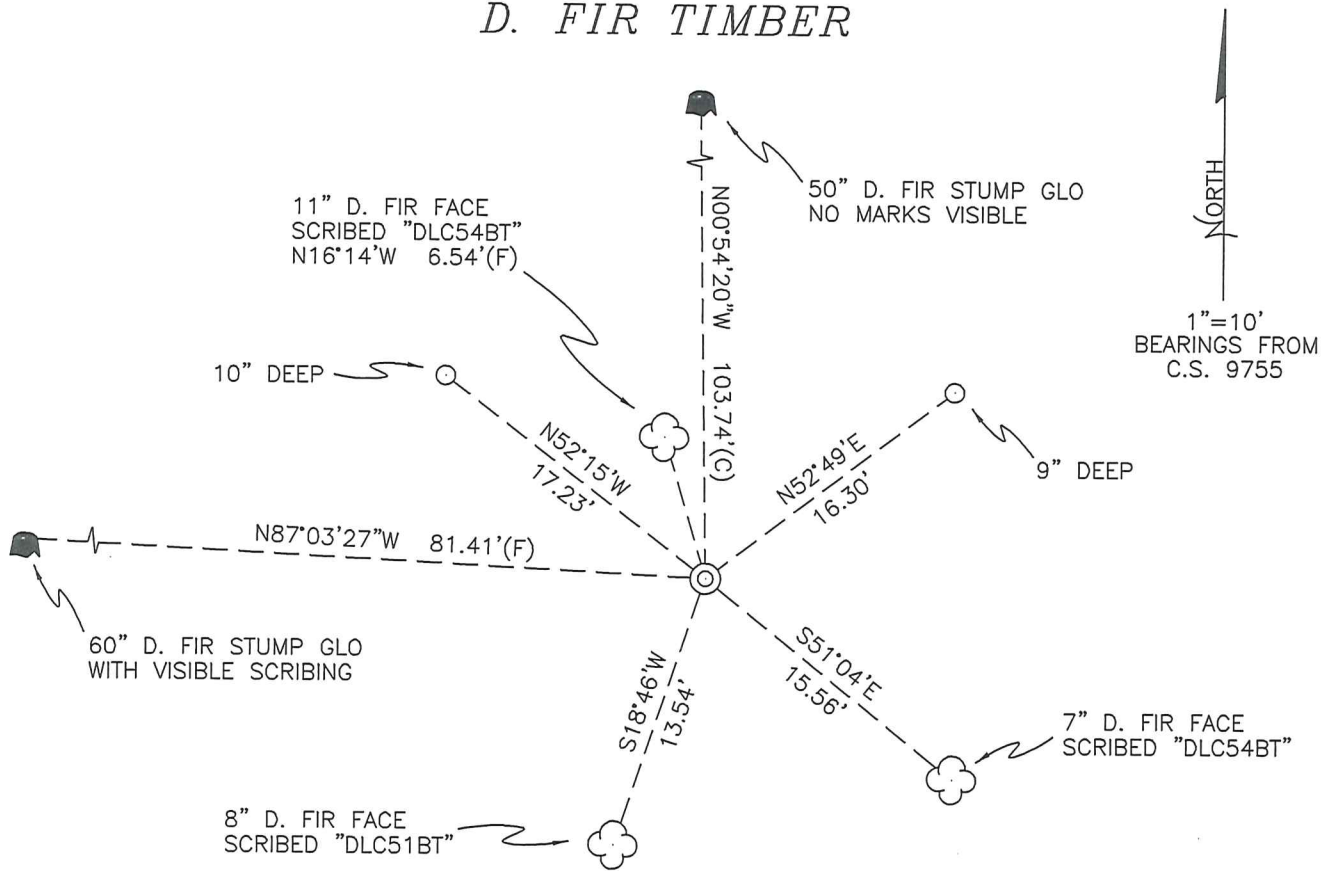
1. FOUND 3/4" IRON ROD, 10" ABOVE GROUND LEVEL FOR CORNER POSITION.
(NO RECORD FOR THE ORIGIN OF THIS MONUMENT).
2. FOUND 60" ROTTEN D. FIR STUMP, N87°03'27"W, 81.41 FEET TO A NAIL IN EXPOSED ORIGINAL FACE WITH VISIBLE SCRIBING.
(20" FIR, N88°W, 81.18 FEET PER RECORDS [01] AND [02]).
3. FOUND 50" ROTTEN D. FIR STUMP, N00°54'20"W, 103.74 FEET TO CENTER. WE FOUND NO VISIBLE SCRIBING ON THIS STUMP.
(30" FIR, N1°W, 101.64 FEET PER RECORDS [01] AND [02]).

MONUMENT SET (PROCEDURES AND DESCRIPTION):

NO RECORD VISITS WERE MADE TO THE SUBJECT DLC CORNER BEYOND THE ORIGINAL GLO SURVEY. WE WERE UNABLE TO DETERMINE THE ORIGIN OF THE 3/4" IRON PIPE. SAID IRON PIPE COMPARES WELL WITH THE TWO RECOVERED GLO BEARING TREE STUMPS AND FALLS IN A DOWN NORTH/SOUTH WOVEN AND BARBED WIRE FENCE. WE HAVE DETERMINED TO HOLD THE 3/4" IRON PIPE FOR THE TRUE CORNER, BASED ON AN UNKNOWN PERSONS GOOD FAITH EFFORT TO PERPETUATE THE CORNER POSITION OF THIS DLC CORNER.

WE LOWERED THE 3/4" IRON ROD TO 8" BELOW GROUND LEVEL. OVER SAID 3/4" IRON ROD, WE SET A 2" X 31 1/2" GALVANIZED IRON PIPE WITH A 3 1/4" ALUMINUM DISK CONCRETED IN THE TOP, 1" BELOW GROUND LEVEL AND MARKED AS SHOWN ON PAGE 2 OF 2. SET A 6 FOOT ORANGE CARSONITE "SURVEY MARKER" POST 0.5 FEET NORTH OF NEW MONUMENT.

D. FIR TIMBER



D. FIR TIMBER

MONUMENT DETAIL



LEGEND

- SET 5/8" X 30" REBAR WITH YELLOW PLASTIC CAP MARKED "BENTON COUNTY SURVEYOR"
- (F) MEASUREMENT TO FACE
- (C) MEASUREMENT TO CENTER
- ⊙ GOVERNMENT MONUMENT SET AS SHOWN
- ☁ BEARING TREE AS NOTED
- GLO GENERAL LAND OFFICE
- ♣ BEARING TREE STUMP AS NOTED

3 1/4" ALUMINUM DISK

NEW ACCESSORIES:

1. SET REBAR (SEE LEGEND) 9" BELOW GROUND LEVEL N52°49'E, 16.30 FEET.
2. SET REBAR (SEE LEGEND) 10" BELOW GROUND LEVEL N52°15'W, 17.23 FEET.
3. 7" D. FIR FACE SCRIBED "DLC54BT" S51°04'E, 15.56 FEET TO FACE. SET ALUMINUM NAIL AND PLASTIC WASHER BELOW SCRIBING FOR DISTANCE AND ANGLE MEASUREMENT.
4. 8" D. FIR FACE SCRIBED "DLC51BT" S18°46'W, 13.54 FEET TO FACE. SET ALUMINUM NAIL AND PLASTIC WASHER BELOW SCRIBING FOR DISTANCE AND ANGLE MEASUREMENT.
5. 11" D. FIR FACE SCRIBED "DLC54BT" N16°14'W, 6.54 FEET TO FACE. SET ALUMINUM NAIL AND PLASTIC WASHER BELOW SCRIBING FOR DISTANCE AND ANGLE MEASUREMENT.

NOTES:

COMPASS DECLINATION IS 20° EAST. ALL MEASURED DISTANCES AND BEARINGS ARE TO THE CENTER OF THE OBJECT, UNLESS OTHERWISE NOTED. ALL BEARING TREES ARE PAINTED AND HAVE A B.T. TAG ATTACHED, FACING THE CORNER UNLESS OTHERWISE NOTED. ALL NEW BEARING TREES HAVE A PLASTIC WASHER (STAMPED "SURVEYOR MARKER DO NOT REMOVE") ATTACHED BY AN ALUMINUM NAIL TO THE FACE, BELOW THE "BT" FOR DISTANCE AND ANGLE MEASUREMENT UNLESS OTHERWISE NOTED. THE DRAWING IS FROM AUTOCAD RELEASE 2008.

THIS RESTORATION WAS PERFORMED AT THE DIRECTION AND APPROVAL OF THE BENTON COUNTY SURVEYOR Dea

REGISTERED
PROFESSIONAL
LAND SURVEYOR

4/30/10 *David M. Dean*

FIRM/AGENCY: BENTON COUNTY SURVEYOR'S OFFICE
 ADDRESS: 360 S.W. AVERY AVE. CORVALLIS, OR. 97333; PH. 766-6821
 PRESENT: DAVID M. DEAN, P.L.S. AND BERNIE ALTENBACH, SURVEY TECH.
 EQUIPMENT: NIKON NIVO 3C WITH SURVEY PRO ON BOARD

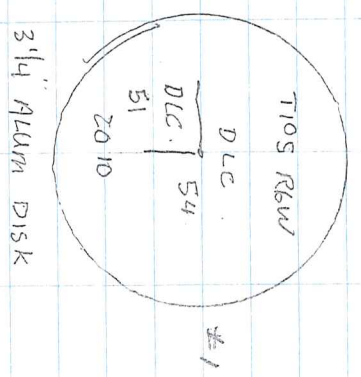
OREGON
 JULY 13, 1984
 DAVID M. DEAN
 2090

RENEWAL DATE: 12/31/11

106851010

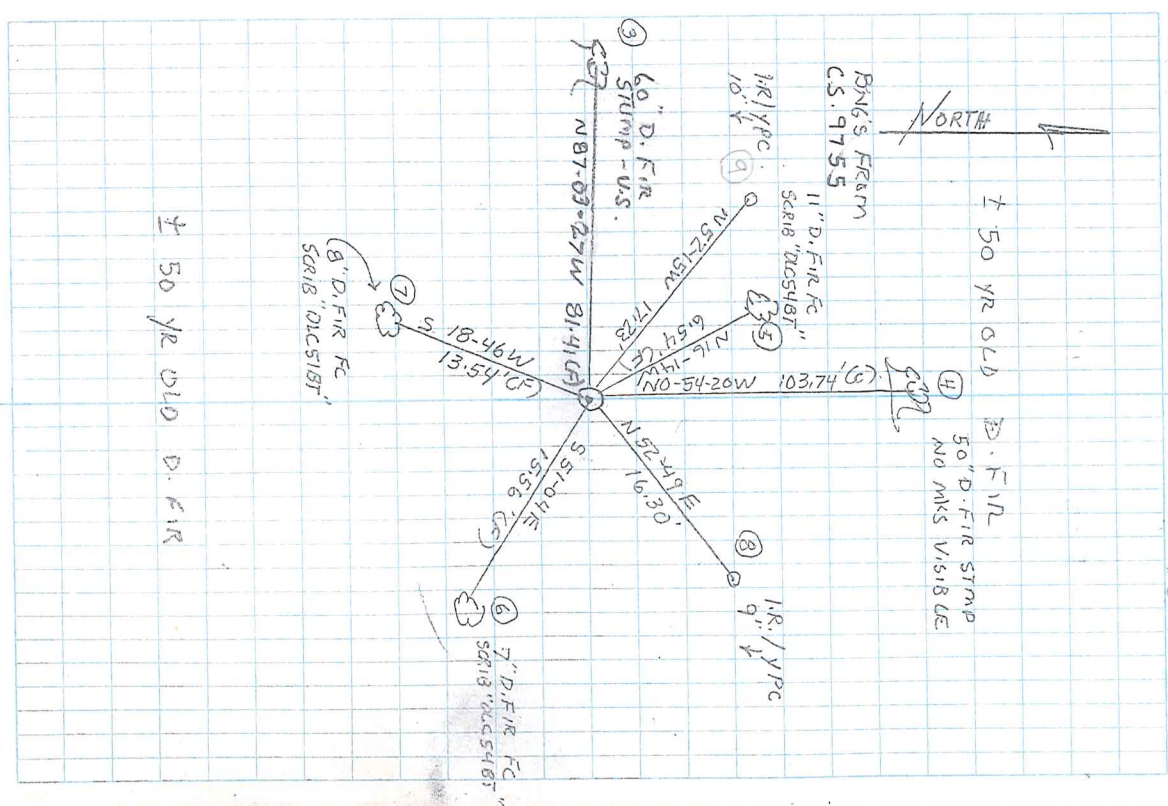
REMANUMENTING NE DLC 51 T105 RBW

FD UNRECORDED 3 1/4" I.R. 10" ABOVE GR.
LEVEL FOR COR. POSITION. COMPARES
WELL WITH BOTH GLO. BT'S. LOWERED
I.R. TO 8" BELOW GROUND LEVEL. OVER
I.R. SET 2" X 3 1/2" G.I.P. w/ 3 1/4" ALUM
DISK CONC. IN TOP. 1" BELOW GROUND
LEVEL AND MKD AS SHOWN.
SET 6" BRASS CROSSHAIR "SURVEY MARKER"
POST @ E. NO. 174 DE NEUD MANU.



GLD 1, MILD
4PF, 29.6" Hg
ALUM NVD 30C

4/28/10 28/43
D. DEAN
B. ALTENBACH



± 50 YR OLD D. FIR