

Most S.
 C.S. #253 S.W. corner of James Greer D.L.C. #50 T.10S.R.6W.
 Set Stone 6"x10"x18" which had been grad'd on the same side
 Mark'd Thorn 6" in dia. bears S. 54° 30' E. 557 chs.
 " Oak 10" " " " S. 23° E. 5701 "
 Orig. " 10" " " " N. 21° 59' W. 11.77 " std.
 Witnesses as last corner. Sept. 12, 1916.

" S.E. corner of James Greer D.L.C. #50 T.10S.R.6W.
 Set a 1/2" x 3/8" iron rod
 Maple 12" in dia. bears S. 40° E. 228 chs. std.
 Mkd. in 15" " " " S. 23° 40' W. 730 "
 Oak 10" " " " N. 45° W. 946 " " " "
 Witnesses H.T. Walter & Limer Maxfield, Bruce & Frank Miller Sept. 13, 1916.

" N.E. corner of James Greer D.L.C. #50 T.10S.R.6W.
 Set a Stone 8"x11"x13" hole in top set from Oak stamp & alder stamp
 Fir 9" in dia. bears N. 62° 30' E. 202 chs.
 " 10" " " " N. 34° 30' W. 1032 "
 Witnesses H.T. & Walter Maxfield, Bruce Miller Sept. 14, 1916.

" N.W. corner of James Greer D.L.C. #50 T.10S.R.6W.
 Set a Stone 6"x6"x14" 8" under surface set from oak & stump.
 Oak 20" in dia. bears S. 41° E. 464 chs. std.
 " Stamp 15" " " " S. 15° E. 373 " "
 Mkd. 12" " " " S. 0° 30' W. 2821 "
 Witnesses Walter & H.T. Maxfield & C.F. Rice Sept. 15, 1916.

" S.E. corner of James W. Bingham D.L.C. #51 T.10S.R.6W.
 Set a stone 6"x6"x16" original stone gone, set from trees.
 Mkd. an Oak 5" in dia. bears N. 30° 40' E. 335 chs.
 Orig. " 36" " " " S. 68° W. 496 " std.
 " " 15" " " " S. 50° W. 480 " "
 Witnesses as NE corner. Sept. 14, 1916.

" 1/4 sec. cen. between secs. 14 & 23 T.10S.R.6W.
 Set 1/2" iron rod. Set from ash and fir stamp. checked.
 Mark'd W fir. 30" in dia. bears S. 39° W. 610 chs.
 " W. " 12" " " " N. 48° 30' W. 512 "
 Ash 4" " " " N. 21° E. 10 " Sprout gone but
for tree sds.
 Witnesses Bruce & Frank Miller & John Banks. Sept. 21, 1916.

" 1/4 sec. cor. bet. secs. 23 & 26 T.10S.R.6W.
 Set 3/4" x 1/4" x 30" iron bar. set from oak & fir stamp.
 Mkd. Fir 13" in dia. bears N. 65° E. 2060 chs.
 " 24" " " " N. 65° W. 255 "
 Witnesses as last corner. Sept. 22, 1916.

S. E. corner of James W. Bigham DLC 51, Twp. 19 S., R. 6 W.

Reestablishment by W. C. Galloway

September 14, 1916

Set a stone 6" x 6" x 16" , original stone gone, set from trees.

Oak 5" in diam bears N 30° 40' E .335 chains

Oak 36" in diam bears S 68° W 4.96 chains(standing)

Oak 15" in diam bears S 50° W 4.80 chains(standing)

Witnesses Walter and H. T. Maxfield and C. E. Rice

SEC 14 & 15

T105 R6W SEC 14 SE COR. JAMES G. BINGHAM D.L.C. NO. 51

FIND: 3/4" I.D. I.P. LOOSELY SET FOR THE COR. (CS# 5786)

1" AN OAK 53" IN DIA. @ POINT EVIDENCE OF A HEADED FACE BEARS S 62°30' W ~ 326.75' (52" S 66°47' W ~ 326.3' CS# 5786). SET A PK + B.C.B.W. IN THE NW'Y BASE. SET A B.T. TAG ON THE NE'Y FACE. THIS IS AN OAK B.T.

19" AN OAK 18" IN DIA. @ A ROTTED OUT FACE BEARS N 50° E ~ 23.80' (17" DIA. N 40° E ~ 24.1' CS# 5786). SET A PK + B.C.B.W. IN THE E'Y BASE. SET A B.T. TAG ON THE S'Y FACE.

A FIR STUMP 24" IN DIA. @ A HEADED FACE BEARS S 61°30' E ~ 42.1' (14" S 58° E ~ 46.5' CS# 5786). SET A B.T. TAG ON THE TOP OF THE STUMP.

NO OTHER RECORD BEARING OBJECTS WERE RECOVERED

REMOVED THE RECOVERED 3/4" PIPE + MADE A THOROUGH SEARCH FOR BOTH THE ORIG. STONE + GALLOWAY'S STONE WITH NO SUCCESS. SET A 2" I.D. x 36" LONG IRON PIPE @ A 3" REN. CO. B.C. STAMPED AS SHOWN IN THE SKETCH POSITION AS THE RECOVERED 3/4" PIPE. REPOSITED THE RECOVERED 3/4" PIPE INSIDE THE NEW 2" PIPE.

A MAPLE 6" IN DIA. BEARS S 89° E ~ 22.42'. FACED + SCRIBED "D.L.C. 51 B.T." SET A PK + B.C.B.W. IN THE NW'Y BASE. SET A B.T. TAG ON THE W'Y FACE.

A MAPLE 7" IN DIA. BEARS S 80° W ~ 10.12'. FACED + SCRIBED "D.L.C. 51 B.T." SET A PK + B.C.B.W. IN THE E'Y BASE. SET A B.T. TAG ON THE N'Y FACE.

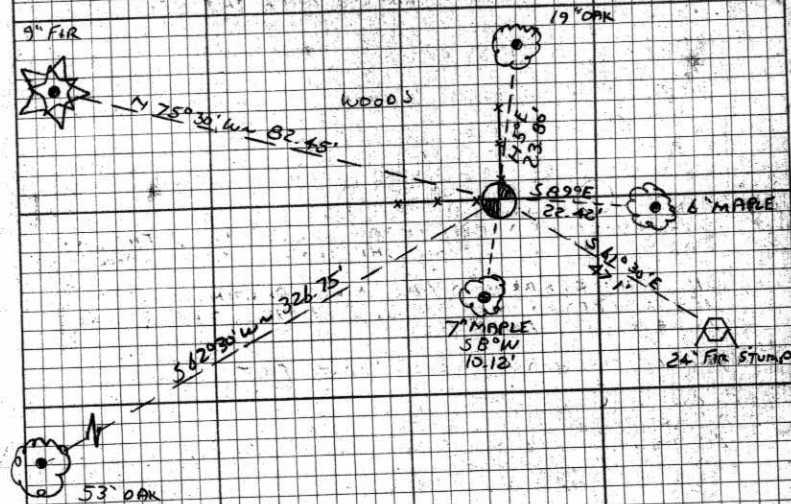
A FIR 9" IN DIA. BEARS N 75°30' W ~ 82.45'. FACED + SCRIBED "D.L.C. 51 B.T." SET A PK + B.C.B.W. IN THE NW'Y BASE. SET A B.T. TAG ON THE E'Y FACE.

SET: OAK AND FIBERGLASS SURVEY STAKE POST 1' NE'Y

THE COR. IS LOCATED ON A STEEP 4'Y SLOPING HILLSIDE AT THE INT. NW COR. OF A RECENT CLEAR CUT. AT THE NE EDGE OF A ROTTED WOODEN COR. FENCE POST (A WOV + BW FENCE RUNS N + W) + SOUTH N'Y FROM MAXFIELD CRK RD (CD. RD. NO. 01500). IT MAY BE OK FOR REMARKING + GPS CONTROL.

2.05 NW 2.75 NE

3119191, C7L 8, MHA @, KUH DATASCAPE, BRUNTON COMP. 20° E 2/10
DEC: CLOY, COOL



SE COR D.L.C. 51
J.W. BINGHAM
D.L.C. 51
D.L.C. 50
CAP STAMPINGS

T105 R6W Wm
1991

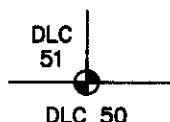
BENTON COUNTY CORNER RESTORATION FORM

3901

TOWNSHIP 10 S RANGE 6 W SECTION 14 D.L.C. JAMES W. BINGHAM NO. 51 CORNER SE
DATE 3/19/91 CORNER RESTORATION FIELD BOOK NUMBER 2 PAGE(S) 49

CORNER DESIGNATION:

THE SOUTHEAST CORNER OF THE JAMES W. BINGHAM
DLC NO. 51, IN T 10 S, R 6 W, WILLAMETTE
MERIDIAN.



- CONDITION REPORT ONLY
REFERENCED OUT
XX RENEWED
SURVEYED IN

LOCATION AND COMMENTS:

THE CORNER IS LOCATED ON A STEEP SOUTHERLY SLOPING HILLSIDE, AT THE INTERIOR NORTHWEST CORNER OF A
RECENT CLEARCUT, AT THE NORTHEAST EDGE OF A ROTTED WOODEN CORNER FENCE POST (A WOVEN AND BARBED
WIRE FENCE RUNS NORTH AND WEST) AND APPROXIMATELY 500 FEET NORTHERLY FROM MAXFIELD CREEK ROAD (COUNTY
ROAD NO. 06580).

PREVIOUS RENEWALS/SURVEYS, ETC:

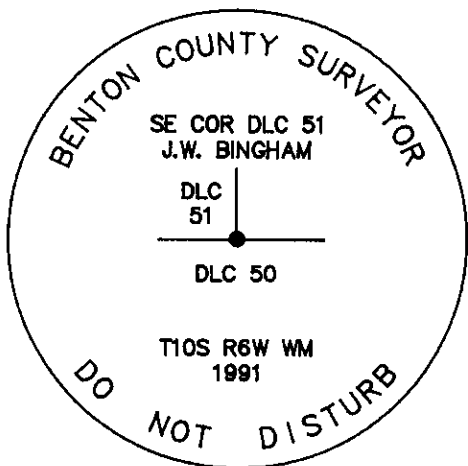
- ORIGINAL GLO SURVEY BY DENNIS HATHORN DATED 1856.
COUNTY SURVEY NO. 565 BY W.C. GALLOWAY DATED SEPTEMBER 12, 1916.
OLD CORNER RESTORATION BOOK NO. 1 PAGE 111 BY W.C. GALLOWAY DATED SEPTEMBER 14, 1916.
CORNER RESTORATION NO. 438 BY W.C. GALLOWAY DATED SEPTEMBER 14, 1916.
MAP NO. 10-6-00004 BY W.C. GALLOWAY DATED SEPTEMBER 27, 1916.
COUNTY SURVEY NO. 5786 BY KEN WIGHTMAN II DATED OCTOBER 28, 1974.
COUNTY SURVEY NO. 7091 BY RUSSELL T. PINARD DATED JUNE 30, 1980.

MONUMENTS AND ACCESSORIES FOUND (CONDITION AND SOURCE):

- FOUND: 3/4" INSIDE DIAMETER IRON PIPE LOOSELY SET FOR THE CORNER (COUNTY SURVEY NO. 5786).
FOUND: AN OAK 53" IN DIAMETER WITH FAINT EVIDENCE OF A HEALED FACE, BEARS S 62° 30' W 326.75 FEET
(52" DIAM. S 66° 47' W 326.3 FEET COUNTY SURVEY NO. 5786). SET A PK NAIL AND B.C.B.W. IN THE
NORTHWESTERLY BASE. SET A B.T. TAG ON THE NORTHEASTERLY FACE. THIS IS AN ORIGINAL BEARING TREE.
FOUND: AN OAK 19" IN DIAMETER WITH A ROTTED OUT FACE BEARS N 5° E 23.80 FEET (17" DIAM. N 4° E
24.1 FEET COUNTY SURVEY NO. 5786). SET A PK NAIL AND B.C.B.W. IN THE EASTERLY BASE. SET A B.T. TAG
ON THE SOUTHERLY FACE.
FOUND: A FIR STUMP 24" IN DIAMETER WITH A HEALED FACE BEARS S 61° 30' E 47.1 FEET (16" DIAM. S 58° E
46.5 FEET COUNTY SURVEY NO. 5786). SET A B.T. TAG ON TOP OF THE STUMP.

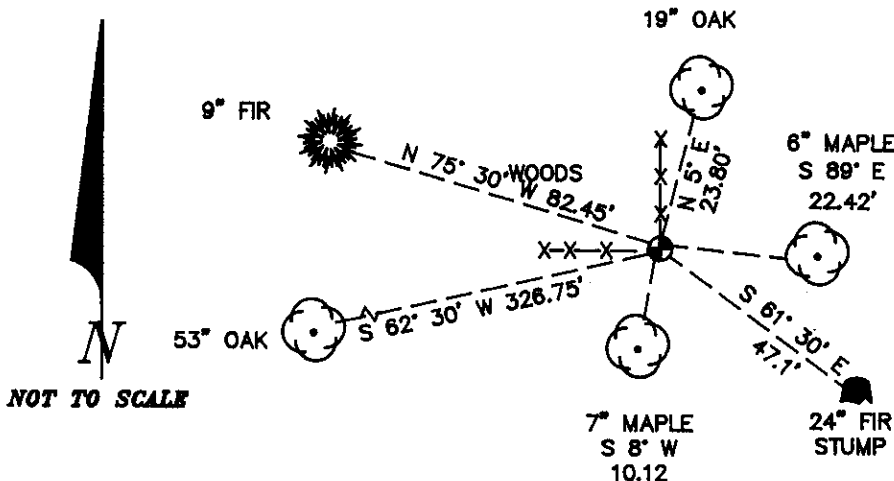
NO OTHER RECORD BEARING OBJECTS WERE RECOVERED.

MONUMENT DETAIL



3 1/4" BRASS CAP

SKETCH



MONUMENT SET (PROCEDURES AND DESCRIPTION):

REMOVED THE RECOVERED 3/4" PIPE AND MADE A THOROUGH SEARCH FOR BOTH THE ORIGINAL STONE AND
GALLOWAY'S STONE WITH NO SUCCESS. SET A 2" INSIDE DIAMETER X 36" LONG IRON PIPE WITH A 3 1/4"
BENTON COUNTY BRASS CAP, STAMPED AS SHOWN, IN THE SAME POSITION AS THE RECOVERED 3/4" PIPE.
DEPOSITED THE RECOVERED 3/4" PIPE INSIDE THE NEW 2" PIPE.

NEW ACCESSORIES:

- A MAPLE 6" IN DIAMETER BEARS S 89° E 22.42 FEET, FACED AND SCRIBED "DLC 50 BT". SET A PK NAIL AND
B.C.B.W. IN THE NORTHERLY BASE. SET A B.T. TAG ON THE WESTERLY FACE.
A MAPLE 7" IN DIAMETER BEARS S 8° W 10.12 FEET, FACED AND SCRIBED "DLC 50 BT". SET A PK NAIL AND B.C.B.W.
IN THE EASTERLY BASE. SET A B.T. TAG ON THE NORTHERLY FACE.
A FIR 9" IN DIAMETER BEARS N 75° 30' W 82.45 FEET, FACED AND SCRIBED "DLC 51 BT". SET A PK NAIL AND
B.C.B.W. IN THE NORTHERLY BASE. SET A B.T. TAG ON THE EASTERLY FACE.

SET: ORANGE FIBERGLASS "SURVEY STAKE" POST 1 FOOT NORTHEASTERLY.

NOTES:

B.C.B.W. IS A BRASS WASHER STAMPED "BENTON COUNTY SURVEYOR". COM-
PASS DECLINATION IS 20° EAST. ALL MEASURED DISTANCES AND COMPASS
BEARINGS ARE TO THE CENTER OF THE OBJECT, UNLESS OTHERWISE NOTED.

THIS RESTORATION WAS PERFORMED AT THE DIRECTION AND APPROVAL OF
THE BENTON COUNTY SURVEYOR.

FIRM/AGENCY: BENTON COUNTY SURVEYOR
ADDRESS: 360 S.W. AVERY AVE. CORVALLIS OR. 97333; PH. 757-8821
SURVEY CREW: CURTIS J. LIESENFELT & MARK E. ANDERSON
WITNESS:

REGISTERED PROFESSIONAL LAND SURVEYOR
Curtis J. Liesenfelt
OREGON
JULY 17, 1986
CURTIS J. LIESENFELT
2213