

106852010

CORNER FILE TRACKING

H:\Survey\Corners\Misc\Filetrac2.doc
06/15/2003

CORNER NUMBER
106852010

STEP	HISTORY()	RESTORATION()
Form Prepared, DB	6/20/10	6/23/10
Field Inspection, DB	6/22/10	6/22/10
Finish index (count unit)	6/22/10	6/22/10
Counter Index	6/23/10	6/23/10
GIS Index Form	6/23/10	6/23/10
Checked, DB	7/12/10	7/12/10
Form Edited, DB	7/12/10	7/12/10
Form Signed, DB	7/13/10	7/13/10
Authorize Payment, DB	—————	—————
Archive Digital Files	7/23/10	7/23/10
Collect Documents	N/A	N/A
PDF File	7/23/10	7/23/10
Copy For Filming	7/23/10	7/23/10
Scanned	7/23/10	7/23/10
Filmed (Archived), DB		
Filed, DB		

(DB) = Entry needed in database (Access).

COMMENTS:

DATE 06/20/2010TOWNSHIP 10 SOUTH, RANGE 6 WEST, WILLAMETTE MERIDIAN; SECTION 11 CORNER NONE
DONATION LAND CLAIM DAVID GRABB NO. 52 CORNER NORTHEAST**COMMON CORNER(S):**SOUTHEAST WILLIAM ROBINSON DLC NO. 54
POINT ON WEST LINE ELIAS D. KEAS DLC NO. 53**RECORDS (INFORMATION IN *BOLD ITALICS* IS COUNTY STAFFS' INTERPRETATION OF THE RECORD)**

BASED ON EXTENSIVE RESEARCH AND RECOVERY OF EVIDENCE, THIS OFFICE HAS DETERMINED THAT MOST GENERAL LAND OFFICE SURVEYORS MEASURED TO THE FACE OF BEARING TREES.

- [01] GENERAL LAND OFFICE (GLO) NOTES OF THE DAVID GRABB DONATION LAND CLAIM (DLC) 52 BY DENNIS HATHORN, D.S. DATED DECEMBER 16, 1854. *BEGINNING AT THE N.E. COR ON E. D. KEAS W. LINE IN SEC. 11. SET POST FROM WHICH AN OAK 24 IN DIA BEARS S25°E, 155 LKS (102.30 FEET); AN OAK 18 IN DIA BEARS S28°W, 125 LKS (82.50 FEET).*
- [02] GLO NOTES OF THE WM ROBINSON DLC 54 BY DENNIS HATHORN, D.S. DATED DECEMBER 16, 1854. *SET POST FOR S.E. COR. FROM WHICH AN OAK 24 IN DIA BEARS S25°E, 155 LKS (102.30 FEET); AN OAK 18 IN DIA BEARS S28°W, 125 LKS (82.50 FEET).*
- [03] GLO NOTES OF THE ELIAS D. KEAS DLC 53 BY DENNIS HATHORN, D.S. DATED DECEMBER 16, 1854. *SOUTH . . . 44.22 CHAINS WM. ROBINSONS' S.E. AND DIVID GRABBS' N.E. COR.*

NOTES:

THIS IS A MICROSOFT WORD 2003 DOCUMENT NAMED "06852010" CREATED FROM A BOILER PLATE DOCUMENT NAMED "HISTORY", WHICH HAS A STYLESHEET NAMED "CORNER" ATTACHED TO IT.

FIRM/AGENCY: BENTON COUNTY SURVEYOR'S OFFICE
ADDRESS: 360 S.W. AVERY AVE. CORVALLIS OR 97333; PH. 766-6821
RESEARCH BY: DAVID M. DEAN, P.L.S.
DATA ENTRY BY: SAME

**BENTON COUNTY CORNER RESTORATION FORM, PAGE 1 OF 2, 106852010R1
SEE CORNER HISTORY FORM FOR RECORDS ETC.**

CORNER RESTORATION FIELD BOOK NUMBER 28 PAGE(S) 56 DATE 06/22/2010
TOWNSHIP 10 SOUTH, RANGE 6 WEST, WILLAMETTE MERIDIAN; SECTION 11 CORNER NONE
DONATION LAND CLAIM DAVID GRABB NO. 52 CORNER NORTHEAST
CONDITION REPORT ; REFERENCED OUT ; RENEWED XX; SURVEYED IN

LOCATION AND COMMENTS:

CORNER IS LOCATED ON A 20 PERCENT NORTH FACING SLOPE IN A STAND OF ±50 YEAR OLD D. FIR TIMBER. TO REACH CORNER FROM THE JUNCTION OF MAXFIELD CREEK ROAD AND WARD ROAD, TRAVEL NORTHERLY AND WESTERLY ON WARD ROAD FOR 0.99 MILES; THEN LEFT (PASSING THROUGH LOCKED GATE) ON PRIVATE ACCESS ROAD FOR 0.24 MILES; THEN LEFT ON SPUR FOR 0.43 MILES; THEN LEFT ON DIRT ROAD FOR 0.54 MILES; THEN RIGHT ON DIRT ROAD FOR 0.26 MILES AND PARK; THEN WALK SOUTHERLY FOR ±400 FEET TO CORNER. CORNER IS POOR FOR PREMARKING AND GPS CONTROL.

MONUMENTS AND ACCESSORIES FOUND (CONDITION AND SOURCE):

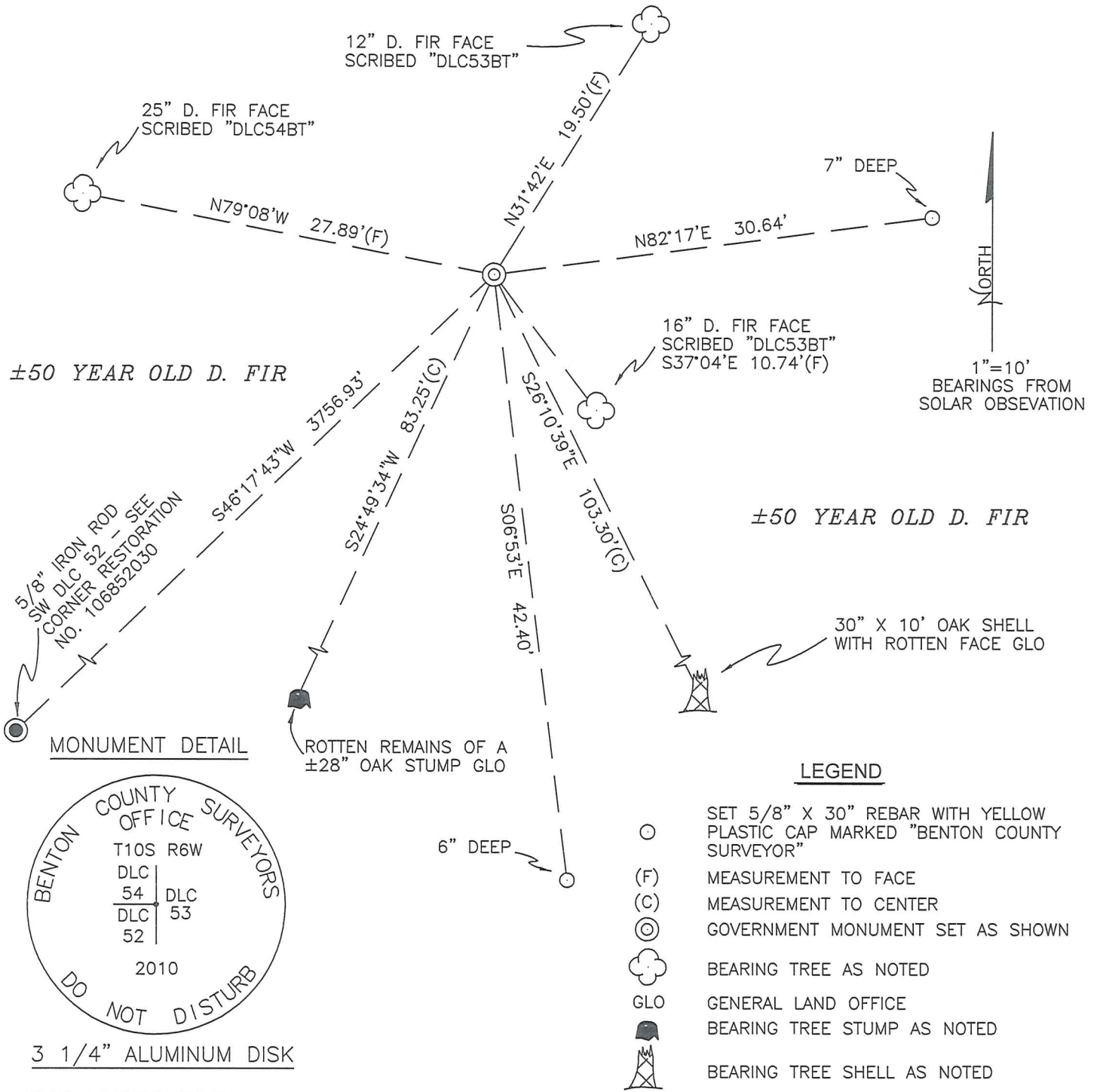
1. FOUND 5/8" IRON ROD WITH YELLOW PLASTIC CAP MARKED "LS 1084", FLUSH WITH GROUND LEVEL FOR CORNER POSITION. (SET POST PER RECORDS [01] AND [02]). (CORNER TIED BUT NOT DESCRIBED PER RECORD [03]). (IRON ROD SET BY PETERSON AND ASSOCIATES. SURVEY TO BE FILED WITH THE BENTON COUNTY SURVEYOR'S IN JULY OF 2010.)
2. FOUND 30" X 10' W. OAK SHELL, S26°10'39"E, 103.30 FEET TO CENTER. OAK SHELL HAS ROTTEN FACE AND AXE WORK. (AN OAK 24 IN DIA BEARS S25°E, 102.30 FEET PER RECORDS [02] AND [03]).
3. FOUND ROTTED REMAINS OF ±28" W. OAK STUMP, S24°49'34"W, 83.25 FEET TO CENTER AND NO VISIBLE MARKS. (AN OAK 18 IN DIA BEARS S28°W, 82.50 FEET PER RECORDS [01] AND [02]).
4. FOUND 5/8" IRON ROD WITH YELLOW PLASTIC CAP MARKED "BENTON COUNTY SURVEYOR" AT THE SOUTHWEST CORNER OF THE DAVID GRABB DLC NO. 52 (S46°17'43"W, 3756.93 FEET). BEARING AND DISTANCE WAS FURNISHED TO US BY PETERSON AND ASSOCIATES AND NOT SURVEYED IN THE FIELD BY BENTON COUNTY. THE BEARING SOURCE (SOLAR) BY PETERSON AND ASSOCIATES AND BENTON COUNTY ARE IDENTICAL. (S46°13'39"W, 3747.48 FEET CALCULATED FROM NORTHEAST CORNER TO SOUTHEAST CORNER TO SOUTHWEST CORNER AND BACK TO NORTHEAST CORNER PER RECORD [01]) (S46°31'47"W, 3741.41 FEET CALCULATED FROM NORTHEAST CORNER TO NORTHWEST CORNER TO SOUTHWEST CORNER AND BACK TO NORTHEAST CORNER PER RECORD [01]).
NOTE: ERROR OF CLOSURE FOR ORIGINAL GLO SURVEY: S26°34'E, 20.66 FEET.

MONUMENT SET (PROCEDURES AND DESCRIPTION):

THE IRON ROD AND PLASTIC CAP WAS SET BY DISTANCE/DISTANCE INTERSECTION FROM THE TWO RECOVERED GENERAL LAND OFFICE BEARING TREES. WE BELIEVE A DISTANCE/DISTANCE SOLUTION IS THE BEST RESOLUTION FOR PLACEMENT OF THIS OBLITERATED DLC CORNER.

REMOVED THE IRON ROD AND PLASTIC CAP AND SET A 2" X 31 1/2" GALVANIZED IRON PIPE WITH A 3 1/4" ALUMINUM DISK CONCRETED IN THE TOP, 2" BELOW GROUND LEVEL AND MARKED AS SHOWN ON PAGE 2 OF 2. BURIED THE IRON ROD ON THE EASTERLY SIDE OF NEW MONUMENT IN A HORIZONTAL POSITION AND 4" BELOW GROUND LEVEL. SET A 6 FOOT ORANGE CARSONITE "SURVEY MARKER" POST 0.5 FEET NORTH OF NEW MONUMENT.

±50 YEAR OLD D. FIR



3 1/4" ALUMINUM DISK

NEW ACCESSORIES:

1. SET REBAR (SEE LEGEND) 7" BELOW GROUND LEVEL N82°17'E, 30.64 FEET.
2. SET REBAR (SEE LEGEND) 6" BELOW GROUND LEVEL S06°53'E, 42.40 FEET.
3. 12" D. FIR FACE SCRIBED "DLC53BT" N31°42'E, 19.50 FEET TO FACE. SET ALUMINUM NAIL AND PLASTIC WASHER BELOW SCRIBING FOR DISTANCE AND ANGLE MEASUREMENT.
4. 16" D. FIR FACE SCRIBED "DLC53BT" S37°04'E, 10.74 FEET TO FACE. SET ALUMINUM NAIL AND PLASTIC WASHER BELOW SCRIBING FOR DISTANCE AND ANGLE MEASUREMENT.
5. 25" D. FIR FACE SCRIBED "DLC54BT" N79°08'W, 27.89 FEET TO FACE. SET ALUMINUM NAIL AND PLASTIC WASHER BELOW SCRIBING FOR DISTANCE AND ANGLE MEASUREMENT.

NOTES:

COMPASS DECLINATION IS 20° EAST. ALL MEASURED DISTANCES AND BEARINGS ARE TO THE CENTER OF THE OBJECT, UNLESS OTHERWISE NOTED. ALL BEARING TREES ARE PAINTED AND HAVE A B.T. TAG ATTACHED, FACING THE CORNER UNLESS OTHERWISE NOTED. ALL NEW BEARING TREES HAVE A PLASTIC WASHER (STAMPED "SURVEYOR MARKER DO NOT REMOVE") ATTACHED BY AN ALUMINUM NAIL TO THE FACE, BELOW THE "BT" FOR DISTANCE AND ANGLE MEASUREMENT UNLESS OTHERWISE NOTED. THE DRAWING IS FROM AUTOCAD RELEASE 2008.

THIS RESTORATION WAS PERFORMED AT THE DIRECTION AND APPROVAL OF THE BENTON COUNTY SURVEYOR *J. Dean* ACTING

7/13/10

REGISTERED PROFESSIONAL LAND SURVEYOR

David M. Dean

FIRM/AGENCY: BENTON COUNTY SURVEYOR'S OFFICE
 ADDRESS: 360 S.W. AVERY AVE. CORVALLIS, OR. 97333; PH. 766-6821
 PRESENT: DAVID M. DEAN, P.L.S. AND BERNIE ALTENBACH, SURVEY TECH.
 EQUIPMENT: NIKON NIVO 3.C WITH SURVEY PRO ON BOARD

OREGON
 JULY 13, 1984
 DAVID M. DEAN
 2090

RENEWAL DATE: 12/31/11

106852010

REMOVEMENT NO NE DAVID GRABR DLC 52

T105 R6 W

Fd 5/8" IR w/ ypc mks "LS 1084" FLUSH

w/ GROUND FOR COR POSITION. I.R. SET BY

DIST/DIST INTERSECTION FM REMAINS OF

BOTH GLO B.T.'S - SE NOW 30" XID ' OAK SHELL

w/ ROTTEN FACE - NO VS. SW NEW ROTTEN REMAINS

OF OAK NO VS. REMOVED IR/YPC AND SET

2" X 3 1/2" G.I.P. w/ 3/4" ALUM. DISK (CONC. IN)

TOP 2" BELOW GROUND LEVEL AND MKD AS

SHOWN. SET 5 NEW REFERENCES. BARRIED

IR/YPC ON ELY SIDE OF NEW MON IN HORIZ

POSITION AND 4" BELOW GROUND LEVEL.

SET 6' ORANGE ORSONITE "SURVEY MARKER"

POST 0 2' NORTH OF NEW MON.

COR ON NE FACILE SLOPE (20%) IN T 50 YR

OLD D.F.I.R. OR BAS N 32E

1 1/2 FM 1/5" O.F



CLDY, MILD
62°F, 29.6" Hg
NIKON NWD 3.0/7DS

6/22/10 28/56
D. DEAN
E. ALTENBACH



± 50 YR OLD D.F.I.R

BEARINGS
FM SOLAR

