

107140300

DATE 01/29/2021TOWNSHIP 10 SOUTH, RANGE 7 WEST, WILLAMETTE MERIDIAN; SECTION 19 CORNER SOUTH 1/4
DONATION LAND CLAIM N/A CORNER N/A**COMMON CORNER(S):**

NORTH 1/4 CORNER SECTION 30

RECORDS (INFORMATION IN *BOLD ITALICS* IS COUNTY STAFFS' INTERPRETATION OF THE RECORD)

BASED ON EXTENSIVE RESEARCH AND RECOVERY OF EVIDENCE, THIS OFFICE HAS DETERMINED THAT MOST GENERAL LAND OFFICE SURVEYORS IN BENTON COUNTY BEFORE 1890 MEASURED TO THE FACE OF BEARING TREES.

- [01] GENERAL LAND OFFICE (GLO) NOTES BY CLARK SMITH, D.S., DATED DECEMBER 24, 1878. *MARKED A VINE MAPLE 4" DIA FOR 1/4 SECTION CORNER, FROM WHICH AN ALDER 6" DIA BEARS S60°W, 42 LINKS (27.72 FEET); ALDER 10" DIA BEARS N40°E, 13 LINKS (8.58 FEET).*
- [02] BENTON COUNTY SURVEY NO. 1110 (OLD NO. 209) FIELD NOTES (FIELD BOOK 98, PAGE 6) BY WALTER W. LARSEN, D.C.S., NO DATE GIVEN. *SET 1/2" PIPE AND VINE MAPLE STAKE. ALDER 14" DIA BEARS S35°W, 0.22 CHAINS (14.52 FEET); D. MAPLE 24" DIA BEARS S30°E, 0.13 CHAINS (8.58 FEET); CLUMP MAPLE 5' DIA BEARS S35°E, 0.44 CHAINS (29.04 FEET).*
- [03] BENTON COUNTY CORNER RESTORATION BOOK NO. 1, PAGE 194, BY WALTER W. LARSEN, D.C.S., NO DATE GIVEN. *SET 1/2" PIPE AND STAKE. ALDER 14" DIA (CSBT) BEARS S35°W, 0.22 CHAINS (14.52 FEET); DEAD MAPLE 24" DIA (CSBT) BEARS S30°E, 0.13 CHAINS (8.58 FEET); CLUMP MAPLE 60" DIA (CSBT) BEARS S35°E, 0.44 CHAINS (29.04 FEET).*
- [04] BENTON COUNTY CORNER RESTORATION NO. 524. *TRANSCRIBED FROM RECORD [03] AND MAY CONTAIN ERRORS AND/OR OMISSIONS.*
- [05] BENTON COUNTY MAP NO. 10-7-00007 BY BURT WILKES, D.C.S., NO DATE GIVEN. *1/2" PIPE AND STAKE. ALDER 14" DIA (CSBT) BEARS S35°W, 0.22 CHAINS (14.52 FEET); DEAD MAPLE 24" DIA (CSBT) BEARS S30°E, 0.13 CHAINS (8.58 FEET); CLUMP MAPLE 60" DIA (CSBT) BEARS S31°E, 0.44 CHAINS (29.04 FEET).*
- [06] RESTORED CORNER FOR OREGON STATE BOARD OF FORESTRY BY ARNOLD G. GIBSON, P.L.S., DATED MARCH 25, 1958. *1/2" IRON PIPE FOUND IN PLACE FROM WHICH AN ALDER 24" DIA (CSBT) BEARS S25°W, 22 LINKS (14.52 FEET), NO MARKINGS FOUND; TRACE OF ROOTS REMAINING BEARS S30°E, 13 LINKS (8.58 FEET); CLUMP OF MAPLE 60" DIA (CSBT) BEARS S50°E, 44 LINKS (29.04 FEET), SCRIBES "CS" VISIBLE ON WEATHERED FACE. SET 1-1/2" X 36" GALVANIZED IRON PIPE WITH 3" BRONZE CAP MARKED "OREGON STATE BOARD OF FORESTRY 1/4 S19 S30 1958 RS 359", 33" IN GROUND, OVER 1/2" PIPE, AND FROM WHICH A MAPLE 15" DIA BEARS S7°E, 43.1 FEET, SCRIBED "1/4 S30 BT RS359"; FIR 15" DIA BEARS N36°W, 70.3 FEET, SCRIBED "1/4 S19 BT". SET 4" X 4" X 72" WHITE PAINTED CEDAR POST 1 FOOT NORTHEAST OF PIPE.*
- [07] BENTON COUNTY CORNER RESTORATION NO. 524. *TRANSCRIBED FROM RECORD [06] AND MAY CONTAIN ERRORS AND/OR OMISSIONS.*
- [08] BENTON COUNTY SURVEY NO. 5732 BY WILJO E. GREEN, P.L.S., DATED MARCH, 1973. *FOUND OREGON STATE BOARD OF FORESTRY 1-1/2" X 36" GALVANIZED IRON PIPE WITH 3" BRONZE CAP. TWO BEARING TREES.*
- [09] BENTON COUNTY SURVEY NO. 5791 BY PHILIP J. LARSON, P.L.S., DATED DECEMBER 3, 1974. *CORNER NOT DESCRIBED.*
- [10] BENTON COUNTY SURVEY NO. 5827 BY WILJO E. GREEN, P.L.S., DATED DECEMBER, 1974, AS CORRECTED BY AFFIDAVIT OF CORRECTION RECORDED AS M-68424-85 OF THE BENTON COUNTY DEED RECORDS. *WILJO E. GREEN PROPORTIONED THE 1/4 SECTION CORNER IN 1974, AND CALLED A 1/2" IRON PIPE AS BEING N83°04'24"W, 31.18 FEET FROM HIS SET MONUMENT. THIS IS PRESUMED TO BE THE 1/2" IRON PIPE SET BY WALTER W. LARSEN. IT IS UNCLEAR WHAT HAPPENED TO THE OREGON STATE BOARD OF FORESTRY PIPE AND CAP SET BY ARNOLD G. GIBSON IN 1958 OVER THE 1/2" IRON PIPE. WILJO E. GREEN FILED AN AFFIDAVIT OF CORRECTION IN 1985. HE STATES: DUE TO AN ERROR, THIS CORNER WAS MONUMENTED S89°55'40"E, 31.47 FEET FROM ITS PROPER LOCATION. SET 1-1/2" X 36" GALVANIZED IRON PIPE WITH 3" BRONZE CAP MARKED "OREGON STATE BOARD OF FORESTRY T10S R7W 1/4 S19 S30 1974 1984 RS 563 RS 2016", 24" IN GROUND, IN MOUND OF ROCK, FROM WHICH AN ALDER STUMP 23" DIA (CSBT) BEARS S21°W, 11.4 FEET TO CENTER, FACE HAS BEEN CHOPPED OUT; MAPLE STUMP 69" DIA (CSBT) BEARS S58°E, 27.9 FEET TO CENTER, SCRIBE "CS" VISIBLE. SET 4" X 4" X 72" WHITE PAINTED CEDAR POST 1.5 FEET SOUTHWEST OF CORNER. 1-1/2" X 36" GALVANIZED IRON PIPE BEARS S89°55'40"E, 31.47 FEET, (1/4 CORNER AS SET IN C.S. 5827) DRIVEN 4" BELOW GROUND AND BRONZE CAP REMOVED. 1/2" IRON PIPE BEARS N7°57'27"E, 3.76 FEET. DESTROYED FACE AND SCRIBE OF ALDER 24" DIA CALLED IN C.S. 5827.*
- [11] BENTON COUNTY CORNER RESTORATION NO. 3294 BY MARK E. STEELE, P.L.S., DATED SEPTEMBER 26, 1984. *SET OREGON STATE BOARD OF FORESTRY 1-1/2" X 36" GALVANIZED IRON PIPE WITH 3" BRONZE CAP, 24" IN GROUND, IN MOUND OF ROCK, FROM WHICH A 1/2" IRON PIPE BEARS N7°57'27"E, 3.76 FEET. 1-1/2" X 36" GALVANIZED IRON PIPE BEARS S89°55'40"E, 31.47 FEET. MAPLE CLUMP 69" DIA (CSBT) BEARS S58°E, 27.9 FEET, SCRIBES "CS" VISIBLE; ALDER STUMP 23" DIA (CSBT) BEARS S21°W, 11.4 FEET, HOLE CHOPPED IN FACE OF STUMP; D. FIR 32" DIA BEARS S54°W, 108.0 FEET, SCRIBED "1/4 S30 RS2016 BT". 4" X 4" X 72" WHITE POST BEARS 1.5 FEET SOUTHWEST. SKID ROAD 26.0 FEET WEST AND 21.0 FEET SOUTH.*

FIRM/AGENCY: BENTON COUNTY SURVEYOR'S OFFICE**ADDRESS:** 360 S.W. AVERY AVE., CORVALLIS, OR 97333; PH. 541-766-6821**RESEARCH BY:** DAVID L. MALONE, P.L.S.**DATA ENTRY BY:** SAME

107140300

BENTON COUNTY SURVEYORS OFFICE - CORNER RESTORATION

3294

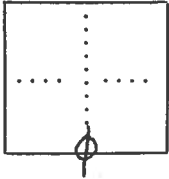
T 10 S, R 7 W, W. B. & M., BENTON COUNTY, OREGON

REPORTED BY M. E. STEELE

SECTION 19

TITLE RS 2016

DATE Sept. 26, 1984



- OFFICIAL CORNER FOUND
- CORNER SET

LEGIBLE MARKS ON BEARING OBJECTS

1/4 CORNER COMMON TO SEC. 19 & 30
IS 1 1/2" X 36" G.I.P. WITH 3" BRONZE CAP 24" I.G. IN MR

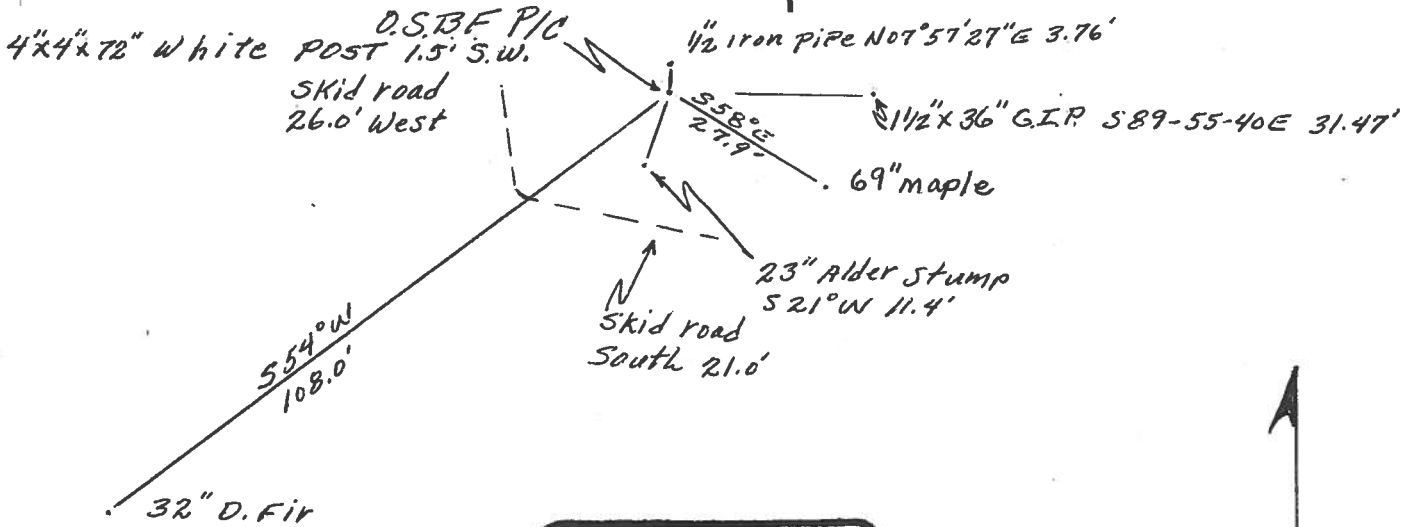
ADDITIONAL INFORMATION

Original corner & B.T.S. missing. Re-establishment by W. W. Larson 1929. 1/2" pipe is N07°57'27"E 3.76' from D.S.B.F. P.I.C.

1 1/2" X 36" G.I.P. bears S89°55'40"E 31.47' (Set by Wilip Green 1974, now corrected, see Affidavit of correction)
Y.L.M.P. = yellow metal location poster
I.G. = inground, MR = mound of rock, G.I.P. = Galvanized iron pipe

	(1929 BT)	(1929 BT)	(1984 BT)
KIND	Maple clump	Alder stump	D. FIR
SIZE	69"	23"	32"
BEARING	S58°E	S21°W	S54°W
DISTANCE	27.9'	11.4'	108.0'
BT TAG POSTED			Y.L.M.P.

OVER



REGISTERED PROFESSIONAL LAND SURVEYOR

Mark E. Steele

OREGON JULY 16, 1982 MARK E. STEELE 2018



RESTORED CORNER FOR OREGON STATE BOARD OF FORESTRY

One Quarter corner common to Sections 19 and 30,
T. 10S, R. 7W, W.M., Benton County, Oregon

ORIGINAL

4" Vine maple for 1/4 corner point (now missing) from which a:

- 6" Alder bears S60W 42 lks.; (now missing)
- 10" Alder bears N40E 13 lks.; (now missing)

RESTORATION by Walter W. Larsen, 1929.

1/2" iron pipe and stake (1/2" iron pipe found in place) from which a:

- 14" Alder bears S35W 22 lks.; found 24" Alder (S25W), no markings found.
- 24" Dead Maple bears S30E 13 lks.; trace of roots remaining.
- 60" clump Maple bears S35E 44 lks.; now 60", scribes CS visible on weathered face (now bears S50E)

RESTORED

Var. 21E

Set 1 1/2" x 36" galvanized iron pipe with 3" bronze cap marked "OREGON STATE BOARD OF FORESTRY 1/4 S19 S30 1958 RS 359," 33 inches in ground, over above 1/2" pipe, and from which a:

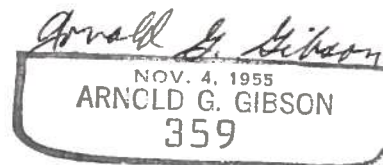
- 15" Maple bears S7E 43.1 ft.; scribed 1/4 S30 BT RS359.
- 15" Fir bears N36W 70.3 ft.; scribed 1/4 S19 BT.

Set 4 x 4 x 72" white painted Cedar post 1 ft. NE of pipe.

Oregon State Board of Forestry metal location poster on 60" clump Maple ET.

Dated March 25, 1958

Restored by David Steenson under my direction.
David Steenson, Engineering Aide



Present and witnessed by Clarence Skog

BENTON COUNTY CORNER RESTORATION BOOK NO. 1

C.S. #134
 County Line Survey
 Nov. 1, 1930
 W.C. Galloway
 Walter W. Larsen
 Roy Murry

Corner to Secs. 1, 6, 7 & 12 T10 S. R. 586 W. W.M.
 Set 3/4" Pipe
 Oak 14" in dia. ^{N.E. of post} S. 17° W 39 links std.
 " 9" " " N 78° 40' W 31.7 " "
 " 12" " " N 30° W 105 " "
 " 12" " " N 12° W 19.0 "

"

S.W. cor. of Henry Fuller D.L.C. #39 T10-586
 Set 3/4" Pipe on Range Line
 Fir 14" in dia. N 8° 30' W 41.2 links
 " 54" " " S 50° 30' W 65.0 " Nail on S. end.
 Oak 16" " " S 3° 30' E 104 " Std. with blaze
 " 12" " " N 47° E 154 " down

"

1/4 Sec. cor. bet. 7 & 12 T10 S R. 586 W.
 Set 3/4" Pipe
 Ash 10" in dia. N 29° W 117 links down
 Fir 4" " " S. 54° E 5 " stump
 " 17" " " N 50° E 11.6 " "
 " 10" " " S. 29 1/2° E 35.5 " "
 " 60" " " S. 80° W 238.6 " to face

Sept
 Walter
 Jacob
 Jerry
 Walter
 Rex
 Ba

Sept. 26, 1931
 Walter W. Larsen
 Floyd Robinson
 Henry Robinson

N.W. corner of E.T. Ellis Cl. 38, T. 14 S. R. 8 W.
 Set a 3/4" bolt - original corner and trees gone
 Oak 3" N. 70° W .050 chains
 " 5" N 17° E .094

1929
 Walter W. Larsen
 Roy Swanson

S.W. corner of Sec. 19 T. 10 S. R. 7 W. W.M.
 Set a 3/4" pipe stake set Andrew Post...
 Cedar post bears North .08 chains
 Fir 6" in dia. " N. 85 1/2° W .475 "
 Burnt Fir 24" " " N. 21° W .39 " std.
 " " 36" " " N. 85° E .25 " stump
 " " 40" " " South 1.75 " std.

W.C.
 Na
 Gr
 Julia

"

1/4 corner on south of sec. 19 T. 10 S. R. 7 W
 Set 1/2" pipe and stake
 Alder 14" in dia bears S. 35° W .22 chains
 Dead Maple 24" " " S 30° E .13 "
 Clumpy Maple 60" " " S 35° E .44 "



"

1/4 corner on west line of section 19 T10 S. R. 7 W.
 Set 1 1/2" angle iron from which a
 Fir 10" in dia bears N. 79° W .526
 Burnt Fir 36" " " N. 40° E .470 std. No marks
 " " " " " N. 28° W .55 " " "

Walter
 Floyd
 T

$\frac{1}{4}$ -Corner on south of section 19, Twp. 10 S., R. 7 W. (19 & 30)

Reestablishment by W. C. Galloway

1929

524

Set $\frac{1}{2}$ " pipe and stake

3/25/58

Alder 14" in diam bears S 35° W (now 24" S25W) .22 chains

Dead Maple 24" in diam bears S 30° E (roots) .13 chains

Clump Maple 60" in diam bears S 35° E (now S50E) .44 chains

Reestablishment by Arnold G. Gibson

March 25, 1958

Set $1\frac{1}{2}$ " x 36" iron pipe with 3" cap, 33" in ground over the $\frac{1}{2}$ " pipe

Maple 15" S 7 E 43.1 ft.

Fir 15" N 36 W 70.3 ft

Set 4 x 4 x 72" cedar post 1 ft. NE of pipe

Metal location poster put on 60" clump Maple BT

Witnesses David Steenson, Clarence Skog

FOR ADDITIONAL INFORMATION SEE THE T10S R7W FILE IN THE CORNER
RESTORATION CORRESPONDENCE FILE DRAWER (CJL 7/12/96).