

## CORNER FILE TRACKING

H:\Survey\Corners\Misc\Filetrac2.doc  
06/15/2003

<b>CORNER NUMBER</b>
<b>107300100</b>

STEP	HISTORY()	RESTORATION()
Form Prepared, DB	11/5/09	8/13/10
Field Inspection, DB	8/6/10	8/6/10
Finish index (count unit)	8/6/10	8/6/10
Counter Index	8/16/10	8/16/10
GIS Index Form	8/16/10	8/16/10
Checked, DB	8/20/10	8/20/10
Form Edited, DB	8/20/10	8/20/10
Form Signed, DB	8/20/10	8/20/10
Authorize Payment, DB	_____	_____
Archive Digital Files	8/30/10	8/30/10
Collect Documents	8/30/10	8/30/10
PDF File	8/30/10	8/30/10
Copy For Filming	8/30/10	8/30/10
Scanned	8/30/10	8/30/10
Filmed (Archived), DB		
Filed, DB		

(DB) = Entry needed in database (Access).

### COMMENTS:

**107300100**

---

DATE 11/05/2009TOWNSHIP 10 SOUTH, RANGE 7 WEST, WILLAMETTE MERIDIAN; SECTION 32 CORNER SOUTHEAST  
DONATION LAND CLAIM NONE CORNER NONE**COMMON CORNER(S):**

SOUTHWEST OF SECTION 33

POINT ON NORTH LINE OF SECTION 5, T11S, R7W

**RECORDS (INFORMATION IN BOLD ITALICS IS COUNTY STAFFS' INTERPRETATION OF THE RECORD)**

BASED ON EXTENSIVE RESEARCH AND RECOVERY OF EVIDENCE, THIS OFFICE HAS DETERMINED THAT MOST GENERAL LAND OFFICE SURVEYORS MEASURED TO THE FACE OF BEARING TREES.

- [01] GENEAL LAND OFFICE (GLO) NOTES BY DENNIS HATHORN, D.S., DATED SEPTEMBER 1856. *WEST ON S. BOUNDARY OF SEC 33. . . 80.00 CHS SET POST COR. SECS 32 & 33 FROM WHICH A FIR 15 IN DIA. BEARS N35°W, 82 LKS (54.12 FEET); A FIR 15" DIA BEARS N83°E, 766 LKS (505.56 FEET).*
- [02] COUNTY SURVEY 580 (OLD NO. 229) FIELD NOTES (FIELD BOOK 19, PAGE 59) BY BURT WILKES, D.C.S. DATED FEBRUARY 7, 1917. *REESTABLISHED – SET STONE 12" X 12" X 6". W. FIR 7" N26°E, 32.85 FEET; FIR 40" N35°W, 0.82 CHS (54.12 FEET) ORIG.*
- [03] COUNTY SURVEY 580 (OLD NO. 229 AND 247) BY BURT WILKES, D.C.S. DATED FEBURARY 7, 1917 AND DECEMBER 20, 1915. *REESTABLISHED – SET STONE 12" X 12" X 6". W. FIR 7" N26°E, 0.497 CHS (32.80 FEET); FIR 15" N35°W, 0.82 CHS (54.12 FEET).*
- [04] BENTON COUNTY MAP NO. 10-7-00018 BY W. C. GALLOWAY, C.S. AND BURT WILKES, D.C.S. DATED DECEMBER 20, 1915 AND FEBRUARY 7 – MARCH 3, 1917. *SAME INFORMATION AS RECORD [03].*
- [05] BENTON COUNTY CORNER RESTORATION BOOK 1, PAGE 119, BY BURT WILKES, D.C.S. DATED FEBRUARY 18, 1917. *SET STONE 12" X 12" X 6" FROM WHICH A FIR 40" (15") DIAM. BEARS N35°W, 0.820 CHS. (54.12 FEET) DIST. – ORIG; A W. FIR 7" DIAM. BEARS N26°E, 0.497 CHS (32.80 FEET) DIST.*
- [06] BENTON COUNTY CORNER RESTORATION NO. 587. *THIS IS A TRANSCRIBED COPY OF RECORD [05] AND MAY CONTAIN ERRORS AND/OR OMISSIONS.*
- [07] BENTON COUNTY MAP NO. 11-7-00002 BY W. C. GALLOWAY, C.S. DATED MAY 1920. *STONE 12" X 12" X 6". FIR 40" N35°W, 0.82 CHS (54.12 FEET); W. FIR 7" N26°E, 0.497 CHS (32.80 FEET).*
- [08] COUNTY SURVEY 1741 (OLD NO. 286) FIELD NOTES (FIELD BOOK 82, PAGE 118) BY W. C. GALLOWAY, C.S. DATED DECEMBER 28, 1945. *S.E. OF SEC.32. STONE 12" X 12" X 6" X 15" FIR STUMP, N35°W, 54.12 FEET. W. FIR GONE. 40 CORNER 10.43 FEET W. OF STONE.*
- [09] COUNTY SURVEY 5415 BY B. OSBURN SHAW, P.L.S. DATED FEBRUARY 20, 1973. *FD STONE "CS" AT FENCE COR.*
- [10] AN UNRECORDED LINE POSTING SURVEY BY JIM PETERSON, P.L.S. DATED OCTOBER 5, 2009. *FOUND 12" X 12" X 6" SANDSTONE WITH NO MARKS VISIBLE PER GHC 11-7-00002 WITH ROTTED WOOD POST STUB ON NE EDGE. 38" FIR, N26°W, 53.8 FT. (N35°W, 0.82 CHS.) WITH HEALED FACE. CORNER LIES IN OLD DOWN E-W FENCE, 10 FEET EAST OF FENCE CORNER WITH FENCES N-S AND E-W.*

**NOTES:**

THIS IS A MICROSOFT WORD 2003 DOCUMENT NAMED "07300100" CREATED FROM A BOILER PLATE DOCUMENT NAMED "HISTORY", WHICH HAS A STYLESHEET NAMED "CORNER" ATTACHED TO IT.

**FIRM/AGENCY:** BENTON COUNTY SURVEYOR'S OFFICE  
**ADDRESS:** 360 S.W. AVERY AVE. CORVALLIS OR 97333; PH. 766-6821  
**RESEARCH BY:** DAVID M. DEAN, P.L.S.  
**DATA ENTRY BY:** SAME



**BENTON COUNTY CORNER RESTORATION FORM, PAGE 1 OF 2, 107300100R2**  
**SEE CORNER HISTORY FORM FOR RECORDS ETC.**

CORNER RESTORATION FIELD BOOK NUMBER 28 PAGE(S) 70 DATE 08/06/2010  
TOWNSHIP 10 SOUTH, RANGE 7 WEST, WILLAMETTE MERIDIAN; SECTION 32 CORNER SOUTHEAST  
DONATION LAND CLAIM NONE CORNER NONE  
CONDITION REPORT     ; REFERENCED OUT     ; RENEWED XX; SURVEYED IN     

**LOCATION AND COMMENTS:**

CORNER IS LOCATED IN A FLAT AREA OF WETLANDS WITH BRUSH, HARDWOODS AND SCATTERED FIR. TO REACH CORNER FROM THE JUNCTION OF MARY'S RIVER ROAD AND LONG ROAD, TRAVEL EASTERLY ON LONG ROAD FOR 0.54 MILES; THEN LEFT ON PRIVATE ACCESS ROAD FOR 0.11 MILES; THEN BEAR LEFT, STAYING ON MAIN SPUR FOR 0.06 MILES; THEN BEAR RIGHT, STAYING ON MAIN SPUR FOR 0.21 MILES; THEN BEAR LEFT ON SPUR FOR 0.08 MILES; THEN BEAR LEFT ON SPUR FOR 0.51 MILES AND PARK AT END OF ROCKED ROAD; THEN WALK NORTH ALONG NEW CLEARCUT FOR ±500 FEET TO POSTED SECTION LINE; THEN WEST ALONG POSTED LINE FOR ±500 FEET TO CORNER. CORNER IS POOR FOR PREMARKING AND GPS CONTROL.

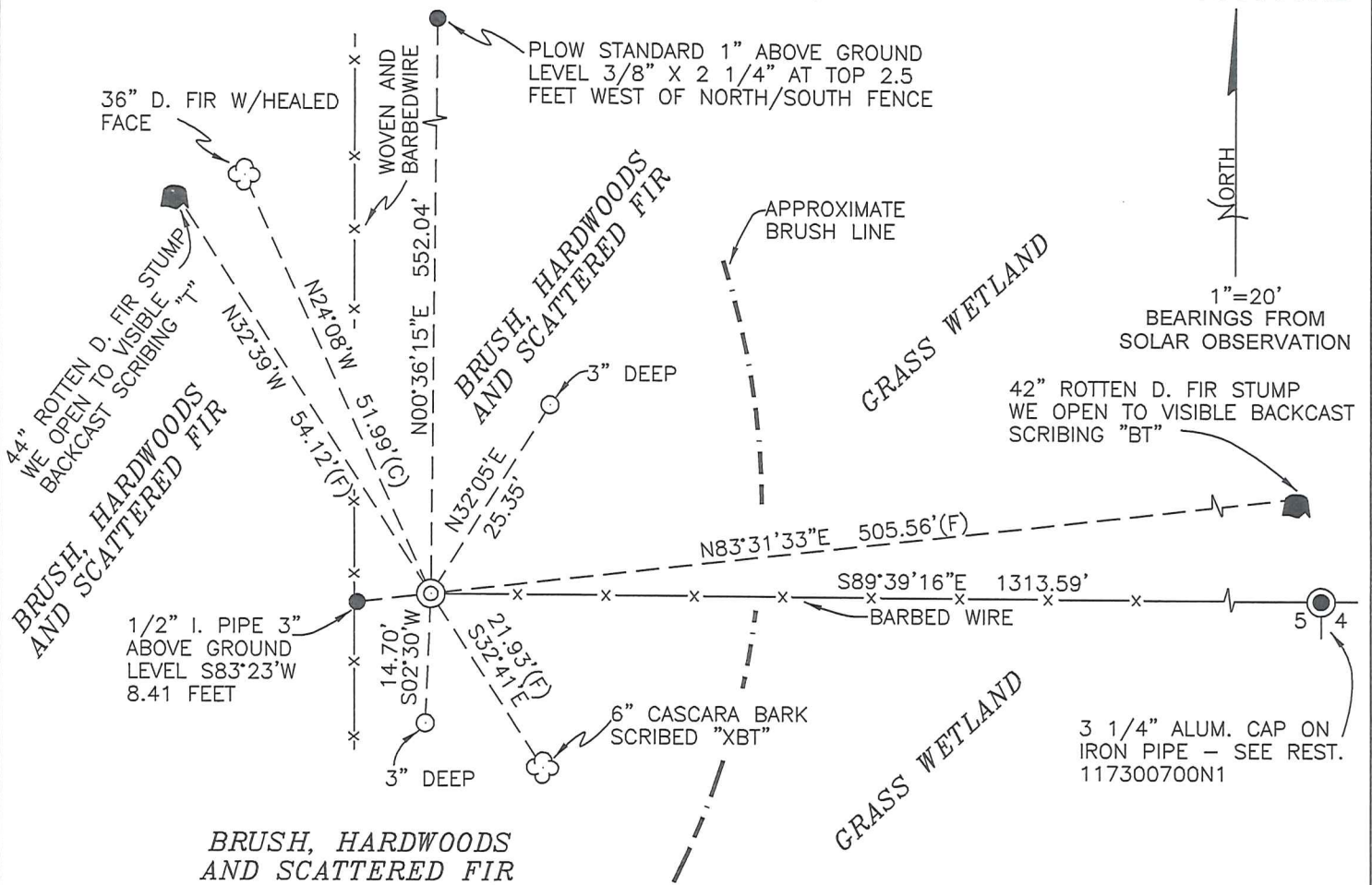
**MONUMENTS AND ACCESSORIES FOUND (CONDITION AND SOURCE):**

1. FOUND 12" X 12" X 6" DISTURBED, BROKEN AND UNMARKED SANDSTONE, 2" BELOW GROUND LEVEL AND LAYING HORIZONTAL, S62°01'E, 2.28 FEET FROM CALCULATED CORNER POSITION.  
(REESTABLISHED – SET STONE 12" X 12" X 6" FROM NORTHWEST GENERAL LAND OFFICE (GLO) BEARING TREE PER RECORDS [02] - [05]).  
(STONE 12" X 12" X 6" PER RECORD [07]).  
(FOUND STONE "CS" AT FENCE CORNER PER RECORD [08]).  
(FOUND 12" X 12" X 6" SANDSTONE WITH NO MARKS VISIBLE PER RECORD [08]).
2. FOUND ±44" D. FIR STUMP (GLO), N32°39'W, 54.12 FEET TO ORIGINAL FACE. WE OPENED STUMP TO VISIBLE BACKCAST SCRIBING "T" AND NOTCH.  
(MARKED FIR, 15" DIA. BEARS N35°W, 54.12 FEET PER RECORD [01]).  
(FIR 40" N35°W, 54.12 FEET PER RECORDS [02] AND [07]).  
(FIR 15" N35°W, 54.12 FEET PER RECORDS [03] – [05]).  
(FIR STUMP 15", N35°W, 54.12 FEET PER RECORD [08]).
3. FOUND ±42" D. FIR STUMP (GLO), S83°31'33"E, 505.56 FEET TO ORIGINAL FACE. WE OPENED STUMP TO VISIBLE BACKCAST SCRIBING "BT".  
(MARKED 15" FIR, N83°E, 505.56 FEET PER RECORD [01]).
4. FOUND 36" D. FIR WITH HEALED FACE, N24°08'W, 51.99 FEET TO CENTER. SET ALUMINUM NAIL AND PLASTIC WASHER IN NORTHEAST BASE FOR DISTANCE MEASUREMENT.
5. FOUND 1/2" IRON PIPE, 3" ABOVE GROUND LEVEL, S83°23'W, 8.41 FEET. IRON PIPE IS 0.5 FEET SOUTHWEST OF FENCE CORNER OF FENCES BEARING NORTH, SOUTH AND WEST.  
(1/2" PIPE, 10.42 FEET WEST PER RECORDS [07] AND [08]).
6. FOUND 3 1/4" ALUMINUM CAP ON 1 1/2" IRON PIPE AT THE SECTION CORNER COMMON TO SECTIONS 4 AND 5, T11S, R7W, S89°39'16"E, 1313.59 FEET.  
(EAST, 1308.78 FEET PER RECORD [01]).  
(SET 1" GALV. PIPE, S89°59'E, 1312.74 FEET PER RECORD [04]).  
(1" PIPE, EAST 1312.74 FEET PER RECORD [07]).
7. FOUND "PLOW STANDARD", N00°36'15"E, 552.04 FEET, 1" ABOVE GROUND LEVEL, 2.5 FEET WEST OF NORTH/SOUTH FENCE AND MEASURING 3/8" X 2 1/4" AT TOP.  
(SET PLOW STANDARD PER RECORD [02]).  
(PLOW STANDARD, N00°07'E, 552.75 FEET PER RECORDS [03] AND [04]).

**MONUMENT SET (PROCEDURES AND DESCRIPTION):**

THE 12" X 12" X 6" STONE WAS FOUND DISTURBED, UNMARKED, PARTIALLY BROKEN AND LYING IN A HORIZONTAL POSITION. WE BELIEVE THIS STONE TO BE THAT MONUMENT SET IN RECORD [02]. NEVERTHELESS, WE HAVE REJECTED SAID STONE FOR THE CORNER POSITION BASED ON EVIDENCE OF BEING DISTURBED. THE FIELD NOTES (RECORD [08]) FOR RECORD [07] NOTE A 1/2" IRON PIPE 10.43 FEET WESTERLY FROM THE SUBJECT CORNER. HOWEVER THESE NOTES HAVE NUMEROUS ERASORS AND ARE SOMEWHAT DUBIOUS. WE ATTEMPTED TO RECONSTRUCT RECORD [04] SURVEY BETWEEN THE SECTION CORNER COMMON TO SECTIONS 4 AND 5, T11S, R7W, THE SUBJECT CORNER AND THE "PLOW STANDARD" 8.375 CHAINS (552.75 FEET) NORTH OF THE SUBJECT CORNER. THE "PLOW STANDARD" WAS FOUND FIRMLY SET AND UNDISTURBED, BUT THE PRESENT MONUMENT AT THE SECTION CORNER COMMON TO SECTIONS 4 AND 5 (3 1/4" ALUMINUM CAP) MAY NOT OCCUPY THAT POSITION ESTABLISHED PER RECORD [04] AND THIS RESOLUTION WAS ALSO REJECTED. RECORDS [02] – [05], [07] AND [08] NOTE THE RECOVERY OF THE GENERAL LAND OFFICE (GLO) BEARING TREE IN SECTION 32 ONLY. WE HAVE RECOVERED BOTH GLO BEARING TREES (NOW STUMPS) WITH VISIBLE SCRIBING ON BOTH STUMPS. THIS OFFICE HAS DETERMINED THE BEST EVIDENCE FOR THE REESTABLISHMENT OF THE SUBJECT CORNER TO BE A DISTANCE/DISTANCE INTERSECTION FROM BOTH GLO ACCESSORIES.

AT SAID DISTANCE/DISTANCE INTERSECTION, WE SET A 2" X 3 1/2" GALVANIZED IRON PIPE WITH A 3 1/4" ALUMINUM DISK CONCRETED IN THE TOP, 1" ABOVE GROUND LEVEL AND MARKED AS SHOWN ON PAGE 2 OF 2. SET A 6 FOOT ORANGE CARSONITE "SURVEY MARKER" POST 0.5 FEET NORTH OF NEW MONUMENT



MONUMENT DETAIL



3 1/4" ALUMINUM DISK

LEGEND

- SET 5/8" X 30" REBAR WITH YELLOW PLASTIC CAP MARKED "BENTON COUNTY SURVEYOR"
- FOUND MONUMENT AS NOTED.
- (F) MEASUREMENT TO FACE
- (C) MEASUREMENT TO CENTER
- ⊙ GOVERNMENT MONUMENT SET AS SHOWN
- ☼ BEARING TREE AS NOTED
- GLO GENERAL LAND OFFICE
- ♣ BEARING TREE STUMP AS NOTED
- x- FENCE AS NOTED

NEW ACCESSORIES:

1. SET REBAR (SEE LEGEND) N32°05'E, 25.35 FEET AND 3" BELOW GROUND LEVEL.
2. SET REBAR (SEE LEGEND) S02°30'W, 14.70 FEET AND 3" BELOW GROUND LEVEL.
3. BARK SCRIBED 6" CASCARA, S32°41'E, 21.93 FEET TO FACE, MARKED "XBT". SET ALUMINUM NAIL AND PLASTIC WASHER BELOW SCRIBING FOR DISTANCE AND ANGLE MEASUREMENT.

NOTES:

COMPASS DECLINATION IS 20° EAST. ALL MEASURED DISTANCES AND BEARINGS ARE TO THE CENTER OF THE OBJECT, UNLESS OTHERWISE NOTED. ALL BEARING TREES ARE PAINTED AND HAVE A B.T. TAG ATTACHED, FACING THE CORNER UNLESS OTHERWISE NOTED. ALL NEW BEARING TREES HAVE A PLASTIC WASHER (STAMPED "SURVEYOR MARKER DO NOT REMOVE") ATTACHED BY AN ALUMINUM NAIL TO THE FACE, BELOW THE "BT" FOR DISTANCE AND ANGLE MEASUREMENT UNLESS OTHERWISE NOTED. THE DRAWING IS FROM AUTOCAD RELEASE 2008.

THIS RESTORATION WAS PERFORMED AT THE DIRECTION AND APPROVAL OF THE BENTON COUNTY SURVEYOR *John*

REGISTERED PROFESSIONAL LAND SURVEYOR

8/20/10 *David M. Dean*

FIRM/AGENCY: BENTON COUNTY SURVEYOR'S OFFICE  
 ADDRESS: 360 S.W. AVERY AVE. CORVALLIS, OR. 97333; PH. 766-6821  
 PRESENT: DAVID M. DEAN, P.L.S. AND JOE MARDIS, P.L.S.  
 EQUIPMENT: NIKON NIVO 3.C TOTAL STATION WITH SURVEY PRO ONBOARD.

OREGON  
 JULY 13, 1984  
 DAVID M. DEAN  
 2090

RENEWAL DATE: 12/31/11



(5)

C.S. #224 Cont

Burt Wilkes

Cor. of Secs. 19, 20, 29, 30 - T. 12 S., R. 4 W.  
 of cor. (orig. stake imperfect)  
 Set 2" Liron 4 1/2' 1079, from which  
 Oak 5" in diam. bears S. 64° 30' E. 182 Chs. dist.  
 " 9" " " " S. 57° 30' W. 482 " "  
 " 6" " " " N. 26° 15' W. 318 " "  
 " 40" " " " " N. 40° E 1.87 " " Orig - True bearing N. 41° E.

Witness by - J.P. & S.P. Williamson & Wm E. Eggy. - Dec. 7, 1916 - 214

C.S. #228

Burt Wilkes, Dist.

W.C. to S.W. Cor. Ira Hunter D.L.C. # 43 - T. 11 S., R. 4 W.  
 1508 Chs. N. 4° 02' E. of true cor.  
 Set heart oak stake, for W.C., from which  
 Fir 10" in diam. bears N. 75 1/2° E. 437 Chs. dist  
 " 8" " " " N. 2° E. 320 " " "

Note - This cor. should go West 143 Chs. to true position -

Witnessed by M.H. Bauer, Clair & Elmer Wilkes & Beck. Feb 7 - 1917

C.S. #229

Burt Wilkes

5th Cor. of Secs. 4 & 5 - T. 11 S., R. 7 W. - on 2nd Std. Parallel, South.  
 Set Fir limb, Orig. Cor.

" Fir 12 in diam. bears N. 3° E. 2.71 Chs. dist." Orig  
 " Fir 30 " " " " S. 22° E. .63 " " "  
 " Fir 12 " " " " S. 35° W. 2.75 " " "  
 " Fir 12 " " " " N. 21° W. 2.73 " " "

Witnessed by - F.E. Reynolds, J.G. Mastoe & Geo. Thral Feb. 8, 1917



6th Cor. of Secs. 32 & 33 - T. 10 S., R. 7 W. - on 2nd Std. Par. S.  
 Set Stone 12" x 12" x 6" from which

" Fir 40" in diam. bears N. 35° W. 820 Chs. dist." Orig.  
 W. Fir 7" " " " N. 26° E. 497 " "

Witnessed, as above Cor.

Feb. 18, 1917

11. 1/4

1/4 sec. Cor. to sec. 5 - T. 11 S., R. 7 W. - on 2nd Std. Par. S.  
 Set 1 1/2" Galv. pipe, from which

" Fir 18" in diam. bears N. 38° E. 422 Chs. dist." Orig.

Witnessed as above.

Feb. 17, 1917

11. 1/4

1/4 Cor. of Secs. 5 & 6 - T. 11 S., R. 7 W. - on 2nd Std. Par. S.  
 Set 1" Pipe, from which

" Burnt Fir 48" in diam. bears N. 13° E. 420 Chs. dist." Orig.  
 Fir 12" " " " N. 41° E. 419 " "

Witnessed as above.

Feb. 20, 1917

11. 1/4

1/4 Cor. of Secs. 31 & 32 - T. 10 S., R. 7 W. - on 2nd Std. Par. S.  
 Set Fir limb 5" x 5" x 32" from which

" Burnt Fir 30" in diam. bears N. 38° W. 520 Chs. dist." Orig.

Fir 9" " " " N. 26° 40' W. 279 " "

Fir 14" " " " N. 31° 45' E. 237 " "

Witnessed as above.

Feb. 10, 1917

11. 1/4

1/4 sec. Cor. bet Secs. 31 & 32 - T. 10 S., R. 7 W. Stone 18" x 13" x 12" from which

Fir 9" in diam. bears N. 30° W. 1090 Chs. dist. Maple 18" N. 12 1/2° W. 473 Chs. dist.

Triple Maple 18" " " N. 57° E. 1052 " "

Witnessed as above Feb. 14, 1917

6

C. Corner of sections 32 and 33, Twp. 10 S., R. 7 W. on 2nd std. parallel S.

Reestablishment by W. C. Galloway

February 18. 1917

Set stone 12" x 12" x 6"

**587**

Fir 15" in diam bears N 35° W

.820 chains

Fir 7" in diam bears N 26° E

.497 chains

Witnessed by F. E. Reynolds, J. G. Mustoe, and George Thral

107300100✓

587

611-1



167300 100

REMONUMENTING 32 B3 T105 R7W  
FD FRACTURED AND PARTIALLY BROKEN  
SANDSTONE (12"x12"x6") LYING HORIZ  
AND 2" w/ NO VISIBLE MKS ± 2' SE OF  
COR. POSITION. FD BOTH GLO BT'S - NOW  
ROTTEN STUMPS - SEC 32 BT 44" ROTTEN  
D. FIR STUMP w/ VISIBLE BACKCAST SCRIBING  
"T", SEC 33 BT 42" ROTTEN D. FIR STUMP  
w/ VISIBLE BACKCAST SCRIBING "BT", FD 42"  
I.P. OF UNKNOWN ORIGIN REPORTED TO BE 1 1/16  
ON N LINE SEC 5 11-7 & FIRST NOTED  
ON BENTON CO. MAP No. 11-7-00002 (RECORD 7).

TO POSITION THIS CORNER WE HELD A  
DIST/DIST INTERSECTION FROM THE FACE OF  
BOTH RECOVERED GLO ACCESSORIES. AT CALC.  
POSITION SET 2" x 3 1/2" G.I.R. w/ 3/4" ALUM.  
DISK CONC. IN TOP, 1" ABOVE GROUND LEVEL  
AND MKD AS SHOWN. SET 6 FT ORANGE

CARSONITE "SURVEY  
MARKER" POST 05

NORTH OF NEW

MONUMENT



#50

D. DEAN  
J. MARDIS  
8/6/10

OVERCAST, MILD (AM)  
60° F, 30.0" Hg  
NIKON N100 30 / TDS

