

CORNER FILE TRACKING

H:\Survey\Corners\Misc\Filetrac.doc

11/23/98

CORNER NUMBER
107500400

STEP	HISTORY()	RESTORATION()
Form Prepared, DB	8/17/05	3/17/06
Field Inspection, DB	3/17/06	3/17/06
Form Checked, DB		
Form Edited, DB		
Form Signed, DB		
Counter Index	3/17/06	3/17/06
GIS Index	3/17/06	3/17/06
Authorize Payment, DB	_____	_____
Archive Digital Files		
Collect Documents	3/17/06	3/17/06
Scanned	4/6/06	4/6/06
Copy For Filming		
Filed, DB		
Finish index (count unit)	3/17/06	3/17/06
Filmed (Archived), DB		

(DB) = Entry needed in database (Access).

COMMENTS:

107500400

Section corner between Sections 14, 15, 22, and 23 in T. 10 S., R. 7 W.

Restored by Elbert Driver

April 19, 1962

C.S. 3649

1653

Post missing

Fir 24" S 5° E 115 lks; now 52"

Fir 10" S 38° W 116 lks; now 52", chopped out

Fir 12" N 55° W 215 lks; now 76"

Fir 36" N 4° E 1035 lks; now down, rotted and burnt

Set 1½" x 36" iron pipe with bronze cap marked "OREGON STATE BOARD OF FORESTRY

T10S R7W S14 S15 S22 S23 1962 RS559"

Fir 22" N 10° W 132.0 ft.

4" x 4" white post SW 2.0 ft.

Witnessed by Billie Davis

107 500 400

15114

REMONUMENTING

22123

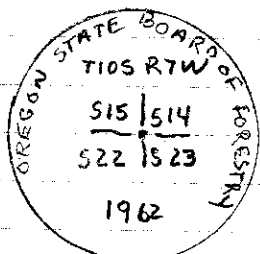
TIOS RTW

FOUND 3" BRASS DISK ON 2" O.D. IRON PIPE PER OSBF (CS 3649) FLUSH W/GROUND LEVEL & MARKED AS SHOWN FOR COR. POSITION.

FOUND 3 GLO BT'S:

- 1) 78" ROTTEN D. FIR STUMP NW BT - FACE COVERED NOT OPENED (DEAD TOP)
- 2) 67" STANDING D. FIR - FACE COVERED - NOT OPENED SW BT
- 3) 58" STANDING (DEAD TOP) OPENED W/SAW BY OTHERS - NO V.S. SE BT

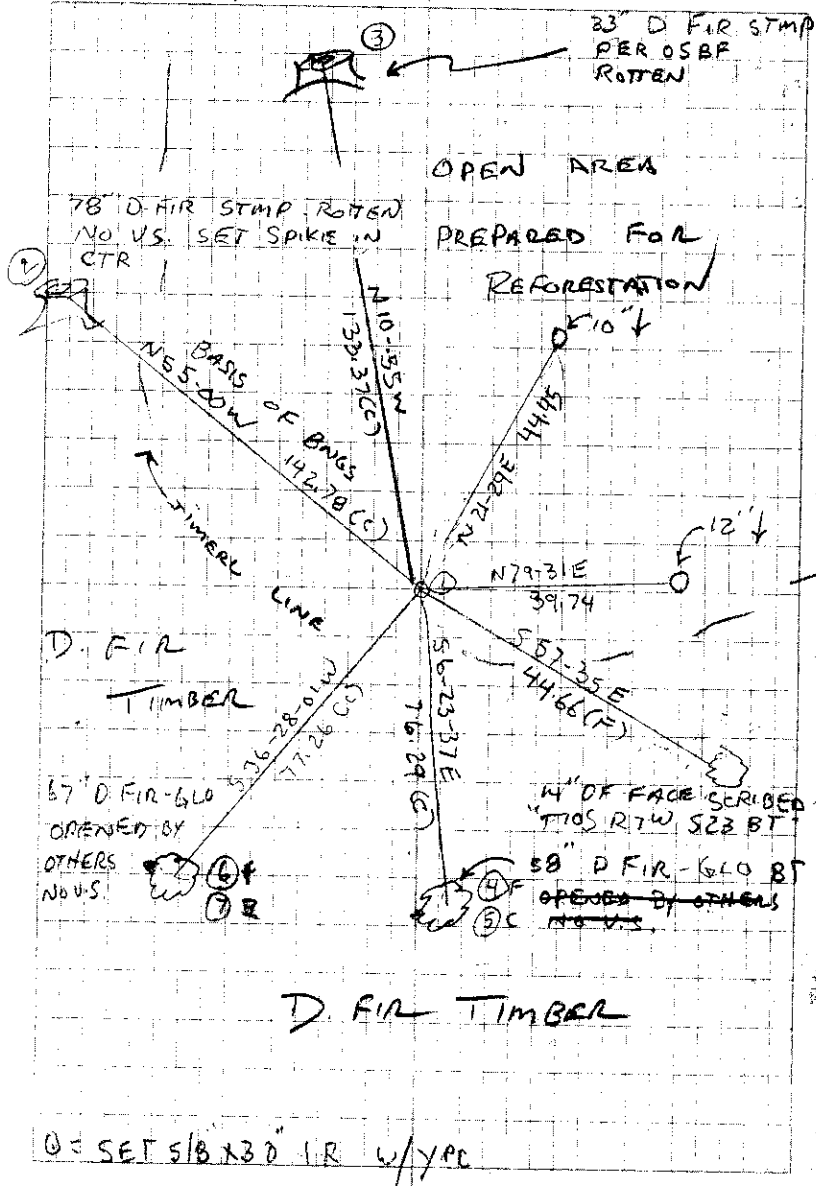
FOUND OSBF (CS 3649) BT - NOW 33" D. FIR STUMP NO V.S. - LOW STUMP, MARKED 1 NEW BT AND SET 2 IRON RODS FOR NEW REFERENCES & TIED EXISTING REFERENCES SET 6' CARSONITE POST ONE OF BRASS DISK



3" BRASS DISK

COOL, SHOWERS
40°F 28.9" Hg
LEICA TCR 1105/TOS

D DEAN 23/73
B. ALTENBACH
3/17/06



⊙ = SETS 5/8 X 30" IR W/YAC

DATE 08/17/2005TOWNSHIP 10 SOUTH, RANGE 07 WEST, WILLAMETTE MERIDIAN; SECTION 14 CORNER SOUTHWEST
DONATION LAND CLAIM N/A CORNER _____**COMMON CORNER(S):**SOUTHEAST OF SECTION 15
NORTHWEST OF SECTION 23
NORTHEAST OF SECTION 22**RECORDS (INFORMATION IN BOLD ITALICS IS COUNTY STAFFS' INTERPRETATION OF THE RECORD)**

BASED ON EXTENSIVE RESEARCH AND RECOVERY OF EVIDENCE, THIS OFFICE HAS DETERMINED THAT MOST GENERAL LAND OFFICE SURVEYORS MEASURED TO THE FACE OF BEARING TREES.

- [01] GENERAL LAND OFFICE (GLO) NOTES BY DENNIS HATHORN, D.S., DATED AUGUST 26, 1856. *SET A POST. MARKED A 36" FIR N04°E 1035 LKS. (683.10 FT.), A 24" FIR S05°E 115 LKS. (75.90 FT.), A 10" FIR S38°W 116 LKS. (76.56 FT.) AND A 12" FIR N55°W 215 LKS. (141.90 FT.).*
- [02] COUNTY SURVEY NO. 3649 BY ELBERT DRIVER, P.L.S., DATED APRIL 19, 1962. *SET 1 1/2" GIP WITH 3" BC. FOUND A ROTTED AND BURNT STUB REMAINS (GLO BT) N04°E 1035 LKS. (683.10 FT.), A 52" FIR (GLO BT) S05°E 115 LKS. (75.90 FT.), A 52" FIR (GLO BT) S38°W 116 LKS. (76.56 FT.), CHOPPED OUT, NO SCRIBES FOUND AND A 76" FIR N55°W 215 LKS. (141.90 FT.). MARKED A 22" FIR N10°W 132.00 FT., SCRIBED "RS559".*
- [03] CORNER RESTORATION NO. 1653. *TRANSCRIBED FROM RECORD [02] AND MAY CONTAIN ERRORS AND/OR OMISSIONS.*

NOTES:

THIS IS A MICROSOFT WORD 2000 DOCUMENT NAMED "07500400" CREATED FROM A BOILER PLATE DOCUMENT NAMED "HISTORY", WHICH HAS A STYLESHEET NAMED "CORNER" ATTACHED TO IT.

FIRM/AGENCY: BENTON COUNTY SURVEYOR'S OFFICE
ADDRESS: 360 S.W. AVERY AVE. CORVALLIS OR 97333; PH. 766-6821
RESEARCH BY: BERNARD S. ALTENBACH, SURVEY TECH.
DATA ENTRY BY: SAME

BENTON COUNTY CORNER RESTORATION FORM, PAGE 1 OF 2, 107500400R1

SEE CORNER HISTORY FORM FOR RECORDS ETC.

CORNER RESTORATION FIELD BOOK NUMBER 23 PAGE(S) 73 DATE 03/17/2006
TOWNSHIP 10 SOUTH, RANGE 7 WEST, WILLAMETTE MERIDIAN; SECTION 14 CORNER SOUTHWEST
DONATION LAND CLAIM NONE CORNER N/A
CONDITION REPORT ; REFERENCED OUT XX; RENEWED ; SURVEYED IN

LOCATION AND COMMENTS:

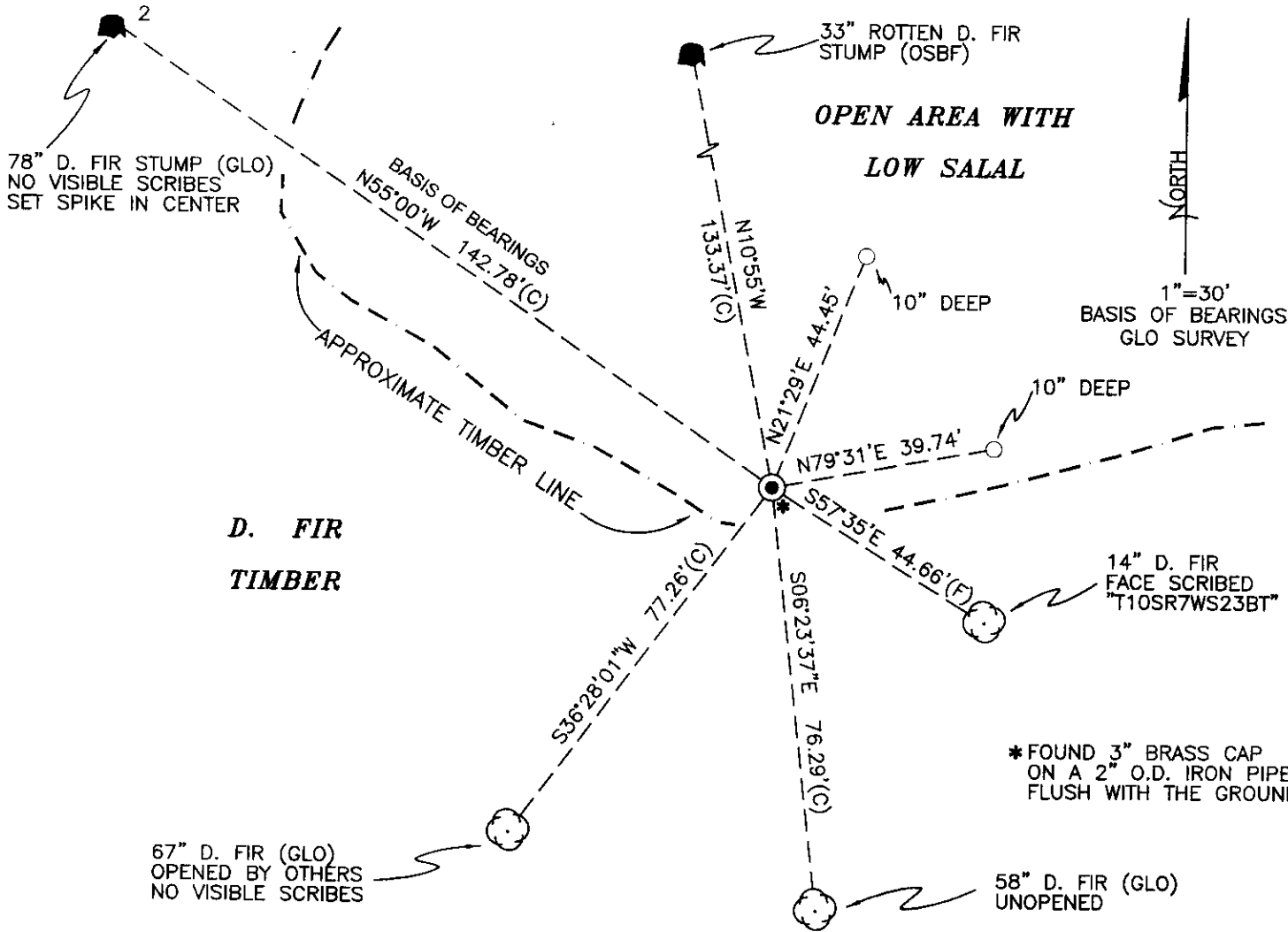
CORNER IS LOCATE ON A GENTLE SOUTHWEST FACING SLOPE ON THE WESTERLY SIDE OF A WIDE FLAT RIDGE AND ± 20 FEET EASTERLY OF TIMBER LINE. TO REACH CORNER FROM THE JUNCTION OF SUMMIT-HOSKINS ROAD AND SHINGLE CREEK ROAD, TAKE SHINGLE CREEK ROAD FOR 1.59 MILES; THEN RIGHT ON PRIVATE LOGGING ROAD, PASSING THROUGH LOCKED GATE FOR 0.76 MILES; THEN RIGHT AT "Y" JUNCTION FOR 0.05 MILES; THEN LEFT AT "Y" JUNCTION FOR 0.36 MILES; THEN LEFT AT "Y" JUNCTION FOR 0.59 MILES AND PARK AT "Y" JUNCTION ON RIDGE TOP; THEN WALK S65°W, ± 200 FEET TO CORNER. CORNER MAY BE GOOD FOR PREMARKING AND GPS CONTROL FOR 5 OR 6 MORE YEARS.

MONUMENTS AND ACCESSORIES FOUND (CONDITION AND SOURCE):

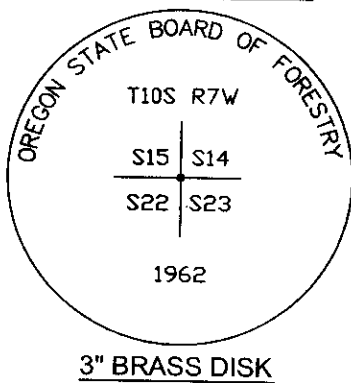
1. FOUND 3" BRASS DISK ON 2" OUTSIDE DIAMETER PIPE, FLUSH WITH GROUND LEVEL FOR CORNER POSITION.
(SET 1 1/2" IRON PIPE WITH 3" BRASS CAP PER RECORD [02]).
2. FOUND 58" D. FIR WITH OPEN SAWED FACE, S6°24'E, 76.29 FEET TO CENTER. SET ALUMINUM NAIL AND PLASTIC WASHER IN WESTERLY BASE FOR DISTANCE MEASUREMENT.
(MARKED 24" FIR, S5°E, 75.9 FEET PER RECORD [01]).
(FOUND 52" FIR, S5°E, 75.9 FEET PER RECORD [02]).
3. FOUND 67" D. FIR WITH SAWED FACE, S36°28'W, 77.26 FEET TO CENTER. SET ALUMINUM NAIL AND PLASTIC WASHER IN NORTHWEST BASE FOR DISTANCE MEASUREMENT.
(10" FIR, S38°W, 76.6 FEET PER RECORD [01]).
(52" FIR, S38°W, 76.6 FEET. CHOPPED OUT NO SCRIBES FOUND PER RECORD [02]).
4. FOUND 78" ROTTEN D. FIR STUMP, N55°00'W, 142.78 FEET TO CENTER. **BASIS OF BEARINGS FOR THIS RESTORATION.**
(12" FIR, N55°W, 141.9 FEET PER RECORD [01]).
(76" FIR, N55°W, 141.9 FEET PER RECORD [02]).
5. FOUND 33" D. FIR STUMP, N10°55'W, 133.37 FEET TO CENTER. NO VISIBLE MARKS FOUND, STUMP IS LOW CUT.
(MARKED 22" FIR, N10°W, 132.0 FEET PER RECORD [02]).

MONUMENT SET (PROCEDURES AND DESCRIPTION):

NO NEW MONUMENT WAS SET. MONUMENT SET BY OREGON STATE BOARD OF FORESTRY WAS FOUND IN GOOD CONDITION. TIED GENERAL LAND OFFICE AND OREGON STATE BOARD OF FORESTRY ACCESSORIES AND SET THREE (3) NEW ACCESSORIES AS SHOWN ON PAGE 2 OF 2. SET 6 FOOT ORANGE CARSONITE "SURVEY MARKER" POST 0.5 FEET EAST OF BRASS DISK.



MONUMENT DETAIL



D. FIR TIMBER

LEGEND

- SET 5/8" X 30" REBAR WITH YELLOW PLASTIC CAP MKD "BENTON COUNTY SURVEYOR"
- (F) MEASUREMENT TO FACE
- (C) MEASUREMENT TO CENTER
- GOVERNMENT MONUMENT FOUND AS SHOWN
- ⊙ BEARING TREE AS NOTED
- GLO GENERAL LAND OFFICE
- BEARING TREE STUMP AS NOTED
- OSBF OREGON STATE BOARD OF FORESTRY

NEW ACCESSORIES:

1. SET REBAR (SEE LEGEND) 10" BELOW GROUND LEVEL N21°29'E, 44.45 FEET.
2. SET REBAR (SEE LEGEND) 12" BELOW GROUND LEVEL N79°31'E, 39.74 FEET.
3. 14" D. FIR FACE SCRIBED "T10SR7WS23BT" S57°35'E, 44.66 FEET TO FACE. SET ALUMINUM NAIL AND PLASTIC WASHER IN BOTTOM OF FACE FOR DISTANCE AND ANGLE MEASUREMENT.

NOTES:

COMPASS DECLINATION IS 20° EAST. ALL MEASURED DISTANCES AND BEARINGS ARE TO THE CENTER OF THE OBJECT, UNLESS OTHERWISE NOTED. ALL BEARING TREES ARE PAINTED AND HAVE A B.T. TAG ATTACHED, FACING THE CORNER UNLESS OTHERWISE NOTED. ALL NEW BEARING TREES HAVE A PLASTIC WASHER (STAMPED "BENTON COUNTY SURVEYOR CORNER RESTORATION") ATTACHED (BY ALUMINUM NAIL) TO THE FACE, BELOW THE "BT" FOR DISTANCE AND ANGLE MEASUREMENT UNLESS OTHERWISE NOTED. THE DRAWING IS FROM AUTOCAD RELEASE 2006.

THIS RESTORATION WAS PERFORMED AT THE DIRECTION AND APPROVAL OF THE BENTON COUNTY SURVEYOR. *DW*

FIRM/AGENCY: BENTON COUNTY SURVEYOR'S OFFICE
 ADDRESS: 360 S.W. AVERY AVE. CORVALLIS OR 97333; PH. 766-6821
 PRESENT: DAVID M. DEAN, P.L.S. AND BERNIE ALTENBACH, SURVEY TECH.
 EQUIPMENT: LEICA TCR 1105 WITH TDS ON BOARD

REGISTERED
 PROFESSIONAL
 LAND SURVEYOR

4/3/06 *David M. Dean*

OREGON
 JULY 13, 1984
 DAVID M. DEAN
 2090

RENEWAL DATE: 12/31/07