

**107600240**

## **CORNER FILE TRACKING**

S:\Survey Corners\CORNERS\Templates\Filetrac2.doc  
10/04/2010

<b>CORNER NUMBER</b>
<b>107600240</b>

STEP	HISTORY	RESTORATION
Form Prepared, DB	9/27/17	11/26/19
Field Inspection, DB	11/12/2019	11/12/19
Finish index (count unit)	11/22/2010	11/12/19
Counter Index	11/12/19	11/12/19
GIS Index Form	11/14/19	11/14/19
Checked, DB	12/3/19	12/3/19
Form Edited, DB	12/13/19	12/13/19
Form Signed, DB	12/13/19	12/13/19
Authorize Payment, DB	—	—
Archive Digital Files	12/13/19	12/13/19
Collect Documents	12/13/19	12/13/19
PDF File	12/13/19	12/13/19
Copy For Filming	12/13/19	12/13/19
Scanned (pdf to laserfiche)	12/13/19	12/13/19
Filmed (Archived), DB		
Filed, DB		

(DB) = Entry needed in database (Access).

### **COMMENTS:**

DATE 11/22/2010TOWNSHIP 10 SOUTH, RANGE 07 WEST, WILLAMETTE MERIDIAN; SECTION 25 CORNER WEST 1/4  
DONATION LAND CLAIM N/A CORNER N/A**COMMON CORNER(S):**

EAST 1/4 CORNER OF SECTION 26

**RECORDS (INFORMATION IN *BOLD ITALICS* IS COUNTY STAFFS' INTERPRETATION OF THE RECORD)**

BASED ON EXTENSIVE RESEARCH AND RECOVERY OF EVIDENCE, THIS OFFICE HAS DETERMINED THAT MOST GENERAL LAND OFFICE SURVEYORS IN BENTON COUNTY MEASURED TO THE FACE OF BEARING TREES.

- [01] GENERAL LAND OFFICE (GLO) NOTES BY DENNIS HATHORN, D.S., DATED AUGUST 26, 1856. *SET POST FROM WHICH A FIR 15" DIA BEARS N4°E, 953 LINKS (628.98 FEET); A FIR 40" DIA BEARS S28°W, 130 LINKS (85.80 FEET).*
- [02] SURVEY NO. 32 FROM PAGE 40 OF THE RECORD BOOK OF SURVEYS BY ANDREW L. PORTER, C.S., DATED JUNE 24, 1889. *SET NEW POST. BEARING TREES IN GOOD ORDER.*
- [03] REESTABLISHMENT NOTES FROM PAGE 48 OF THE RECORD BOOK OF SURVEYS BY ANDREW L. PORTER, C.S., DATED JULY 20, 1889. *SET NEW POST FROM WHICH TREES IN GOOD ORDER.*
- [04] BENTON COUNTY LOOSE LEAF ROAD NOTES FOR BOTTGER-BONNER MTN. SECTION SUMMIT HOSKINS ROAD BY W. C. GALLOWAY, C.S., DATED FEBRUARY 28, 1942. *SET 1/2" GALVANIZED PIPE. FIR 40" DIA (NOW 66") (GLO BT) BEARS S28°W, 85.8 FEET, SPIKE NORTH; FIR 7" DIA BEARS S52-1/2°E, 12.9 FEET, BLAZED, NOT SCRIBED.*
- [05] BENTON COUNTY CORNER RESTORATION BOOK NO. 1, PAGE 232 BY W. C. GALLOWAY, C.S., DATED FEBRUARY 28, 1942. *SET A 1/2" GALVANIZED PIPE, 30" LONG FROM WHICH A FIR 40" DIA (NOW 66") (GLO BT) BEARS S28°W, 85.8 FEET = 1.30 CHAINS, TO SPIKE NORTH. FIR 7" DIA (CSBT) BEARS S52-1/2°E, 12.9 FEET = 0.195 CHAINS, BLAZED, NOT SCRIBED.*
- [06] BENTON COUNTY CORNER RESTORATION NO. 552. *TRANSCRIBED FROM RECORD [05] AND MAY CONTAIN ERRORS AND/OR OMISSIONS.*
- [07] BENTON COUNTY MAP NO. 10-7-00012, UNKNOWN DRAFTSMAN, DATED FEBRUARY 28, 1942. *1/2" PIPE. FIR 40" DIA (NOW 66") (GLO BT) BEARS S28°W, 85.8 FEET, SPIKE NORTH. FIR 7" DIA (CSBT) BEARS S52-1/2°E, 12.9 FEET, BLAZED, NOT SCRIBED.*
- [08] BENTON COUNTY BOOK OF ROAD HARDCOPIES PAGE 82, ROUTE 54, ROAD NO. 626, BONNER MTN. SECTION OF SUMMIT-HOSKINS ROAD, BY W. C. GALLOWAY, COUNTY ENGINEER, DATED MAY, 1941. *1/2" PIPE.*
- [09] BENTON COUNTY CORNER RESTORATION NO. 3174 BY JIM YOUNG, DATED SEPTEMBER 13, 1983. *FOUND 1/2" PIPE, WHITE FIBER GLASS POST NEAR CORNER. FOUND D. FIR 70" DIA (GLO BT) BEARS S28°W, 85.8 FEET, "1/4" BLAZED IN BARK, SPIKE NEAR BASE ON NORTH SIDE.*

**FIRM/AGENCY:** BENTON COUNTY SURVEYOR'S OFFICE  
**ADDRESS:** 360 S.W. AVERY AVE., CORVALLIS, OR 97333; PH. 541-766-6821  
**RESEARCH BY:** BERNARD S. ALTENBACH, ENGINEER/SURVEY TECH.  
**DATA ENTRY BY:** SAME

**BENTON COUNTY CORNER RESTORATION FORM, PAGE 1 OF 2, 107600240R3**

**SEE CORNER HISTORY FORM FOR RECORDS ETC.**

CORNER RESTORATION FIELD BOOK NUMBER 32 PAGE(S) 51 DATE 11/12/2019  
TOWNSHIP 10 SOUTH, RANGE 7 WEST, WILLAMETTE MERIDIAN; SECTION 25 CORNER WEST 1/4  
DONATION LAND CLAIM N/A CORNER N/A  
CONDITION REPORT    ; REFERENCED OUT    ; RENEWED X; SURVEYED IN    

**LOCATION AND COMMENTS:**

CORNER IS LOCATED ON A SMALL KNOB NORTH OF A DRAW ON A MODERATE NORTH FACING SLOPE IN A STAND OF ALDERS WITH BROKEN TOPS. TO REACH CORNER FROM THE INTERSECTION OF LUCKIAMUTE ROAD AND HOSKINS ROAD, TRAVEL WESTERLY ALONG HOSKINS ROAD FOR 2.24 MILES AND TURN LEFT THROUGH A GATE ONTO A TIMBER ROAD FOR 0.02 MILES TO A WYE, STAY RIGHT FOR 0.36 MILES TO A WYE AND PARK. TAKE LEFT AND WALK FOR ABOUT 80 FEET, THEN LEAVE ROAD AND WALK SOUTH FOR ABOUT 150 FEET. THE CORNER IS BAD FOR PREMARKING AND GPS CONTROL.

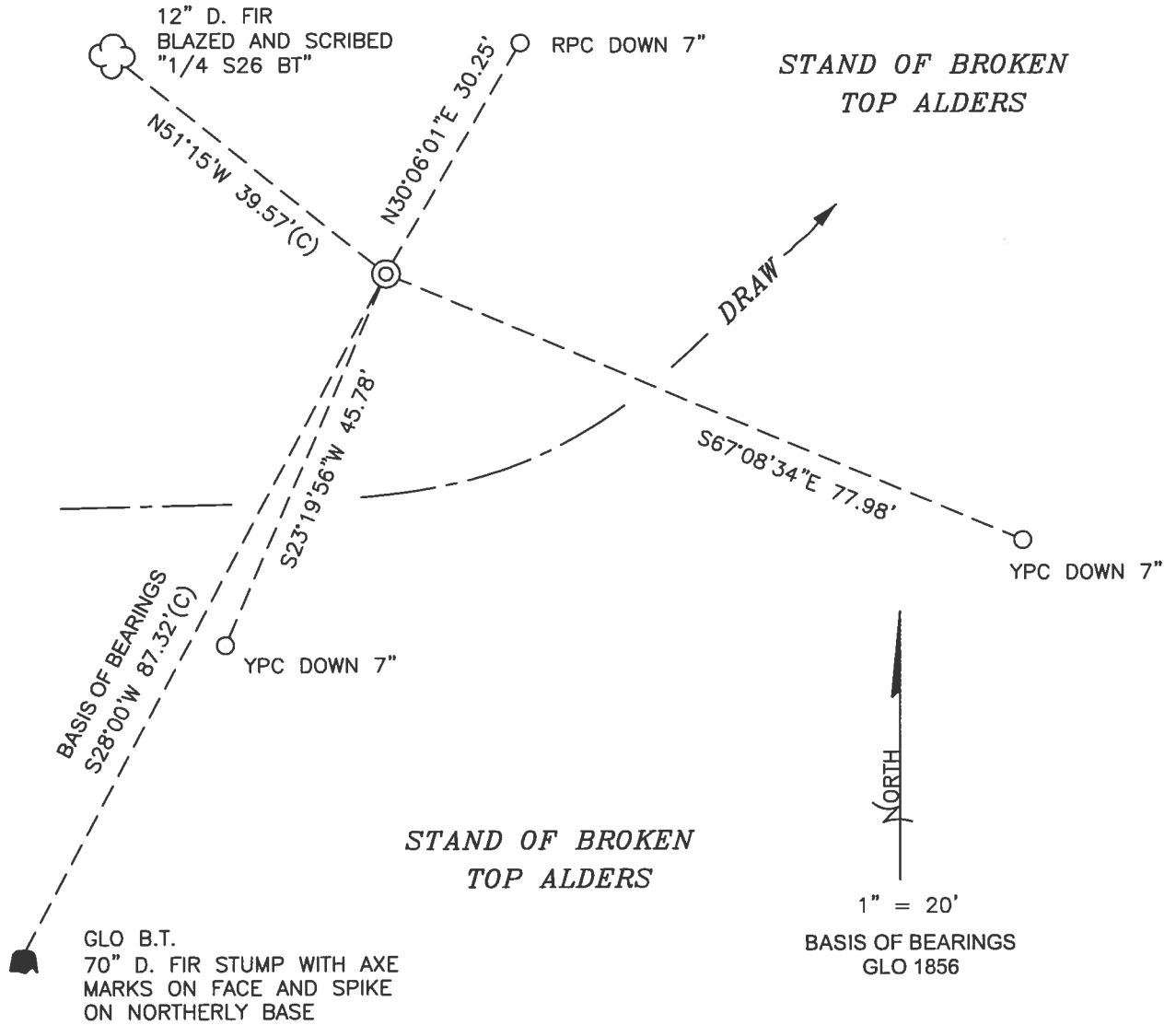
**MONUMENTS AND ACCESSORIES FOUND (CONDITION AND SOURCE):**

1. FOUND VERTICAL HOLE AT ORIGINAL LOCATION OF 1/2" IRON PIPE SET TO PERPETUATE THE CORNER. FOUND 1/2" IRON PIPE WITH TOP 15" BENT OVER AND BROKEN OFF AND BOTTOM 18" LEANING WEST-SOUTHWEST AND PLACED WITH THE BROKEN END DOWN. DUG DOWN AND FOUND THE VERTICAL POSITION OF THE BOTTOM 18", WHICH BEARS ABOUT S28°W, 2.6 FEET FROM THE ORIGINAL PIPE HOLE.  
(SET POST AS PER RECORD [01]).  
(SET NEW POST AS PER RECORDS [02] AND [03]).  
(SET 1/2" GALVANIZED PIPE AS PER RECORD [04]).  
(SET 1/2" GALVANIZED PIPE, 30" LONG, AS PER RECORD [05]).  
(1/2" PIPE AS PER RECORDS [07] THRU [09]).
2. FOUND D. FIR STUMP 70" DIA BEARS S28°00'W, 87.32 FEET TO CENTER, WITH AXE MARKS ON THE FACE AND A SPIKE ON THE NORTHERLY BASE. **BASIS OF BEARINGS FOR THIS RESTORATION.**  
(FIR 40" DIA BEARS S28°W, 130 LINKS [85.80 FEET] AS PER RECORD [01]).  
(BEARING TREES IN GOOD ORDER AS PER RECORDS [02] AND [03]).  
(FIR 40" DIA (NOW 66") BEARS S28°W, 85.8 FEET, SPIKE NORTH AS PER RECORDS [04], [05] AND [07]).  
(FOUND D. FIR 70" DIA BEARS S28°W, 85.8 FEET, "1/4" BLAZED IN BARK, SPIKE NEAR BASE ON NORTH SIDE AS PER RECORD [09]).

**MONUMENT SET (PROCEDURES AND DESCRIPTION):**

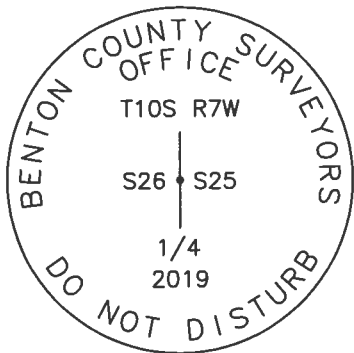
FOUND 1/2" IRON PIPE WITH TOP 15" BENT OVER AND BROKEN OFF AND BOTTOM 18" LEANING WEST-SOUTHWEST AND PLACED WITH THE BROKEN END DOWN. DUG DOWN AND FOUND THE VERTICAL POSITION OF THE BOTTOM 18" OF PIPE. THIS POSITION DID NOT CHECK WELL WITH THE FOUND REMAINING GENERAL LAND OFFICE (GLO) BEARING TREE STUMP, AND I BELIEVE THAT THE PIPE WAS DAMAGED AND REMOVED FROM THE GROUND BY LOGGING ACTIVITY AND THEN THE 18" PORTION OF PIPE WAS SET IN THE GROUND WITH THE BROKEN END DOWN. I SCRAPED THE LOOSE MATERIAL FROM A 3 FOOT X 3 FOOT AREA AT THE LOCATION CALCULATED FOR THE CORNER USING THE RECORD BEARING AND DISTANCE FROM THE GLO BT STUMP, AND FOUND A VERTICAL PIPE HOLE EXTENDING DOWN INTO THE GROUND. THIS VERTICAL PIPE HOLE FITS WELL WITH THE GLO BT STUMP, SO I HELD THIS POSITION AS THE ORIGINAL LOCATION OF THE 1/2" IRON PIPE SET BY W. C. GALLOWAY, C.S., IN 1942, FROM THE GLO BEARING TREE. THE VERTICAL PIPE HOLE IS ACCEPTED AS THE PERPETUATION OF THE ORIGINAL CORNER POSITION.

OVER THE VERTICAL PIPE HOLE AND IN THE SAME HORIZONTAL POSITION I SET A 2" X 31-1/2" GALVANIZED IRON PIPE WITH A 3-1/4" BRASS DISK CEMENTED IN THE TOP, UP 1" ABOVE GROUND SURFACE AND MARKED AS SHOWN ON PAGE 2 OF 2. SET THREE NEW IRON ROD ACCESSORIES AND BLAZED AND SCRIBED ONE NEW BEARING TREE AS SHOWN ON PAGE 2 OF 2. FOUND WHITE FIBERGLASS POST 4" NORTH OF THE BROKEN IRON PIPE POSITION. RESET WHITE FIBERGLASS POST 1 FOOT EAST OF BRASS DISK. SET 6 FOOT ORANGE CARSONITE "SURVEY MARKER" POST 1 FOOT NORTH OF BRASS DISK. LEFT BROKEN PIECES OF PIPE LAYING ON GROUND NEAR CORNER POSITION.



MONUMENT DETAIL

LEGEND



3-1/4" BRASS DISK

- SET 5/8" X 30" REBAR WITH PLASTIC CAP
- YPC YELLOW PLASTIC CAP MARKED "BENTON COUNTY SURVEYOR"
- RPC RED PLASTIC CAP MARKED "BENTON COUNTY SURVEYOR"
- (C) MEASUREMENT TO CENTER
- ⊙ GOVERNMENT MONUMENT SET AS SHOWN
- GLO GENERAL LAND OFFICE
- B.T. BEARING TREE
- BEARING TREE STUMP AS NOTED
- ☁ BEARING TREE AS NOTED

NEW ACCESSORIES:

1. SET REBAR (SEE LEGEND) N30°06'01"E, 30.25 FEET AND 7 INCHES BELOW GROUND LEVEL.
2. SET REBAR (SEE LEGEND) S67°08'34"E, 77.98 FEET AND 7 INCHES BELOW GROUND LEVEL.
3. SET REBAR (SEE LEGEND) S23°19'56"W, 45.78 FEET AND 7 INCHES BELOW GROUND LEVEL.
4. D. FIR 12" DIA BEARS N51°15'W, 39.57 FEET TO CENTER, FACE SCRIBED "1/4 S26 BT". SET ALUMINUM NAIL AND PLASTIC WASHER ON NORTHEASTERLY BASE FOR DISTANCE MEASUREMENT.

NOTES:

COMPASS DECLINATION IS 15° EAST. ALL MEASURED DISTANCES AND BEARINGS ARE TO THE CENTER OF THE OBJECT, UNLESS OTHERWISE NOTED. ALL BEARING TREES ARE PAINTED AND HAVE A B.T. TAG ATTACHED, FACING THE CORNER UNLESS OTHERWISE NOTED. ALL NEW BEARING TREES HAVE A PLASTIC WASHER (STAMPED "SURVEY MARKER DO NOT REMOVE") ATTACHED BY AN ALUMINUM NAIL TO THE SIDE CENTER OF THE TREE FOR DISTANCE MEASUREMENT, UNLESS OTHERWISE NOTED.

THIS RESTORATION WAS PERFORMED AT THE DIRECTION AND APPROVAL OF THE BENTON COUNTY SURVEYOR *[Signature]*

REGISTERED  
PROFESSIONAL  
LAND SURVEYOR

FIRM/AGENCY: BENTON COUNTY SURVEYOR'S OFFICE  
 ADDRESS: 360 S.W. AVERY AVE., CORVALLIS, OR 97333; PH. 541-766-6821  
 PRESENT: DAVID L. MALONE, P.L.S., AND BERNARD ALTENBACH, SURVEY TECH.  
 EQUIPMENT: NIKON NIVO3.C WITH SURVEY PRO ONBOARD.

12/13/19 *[Signature]*

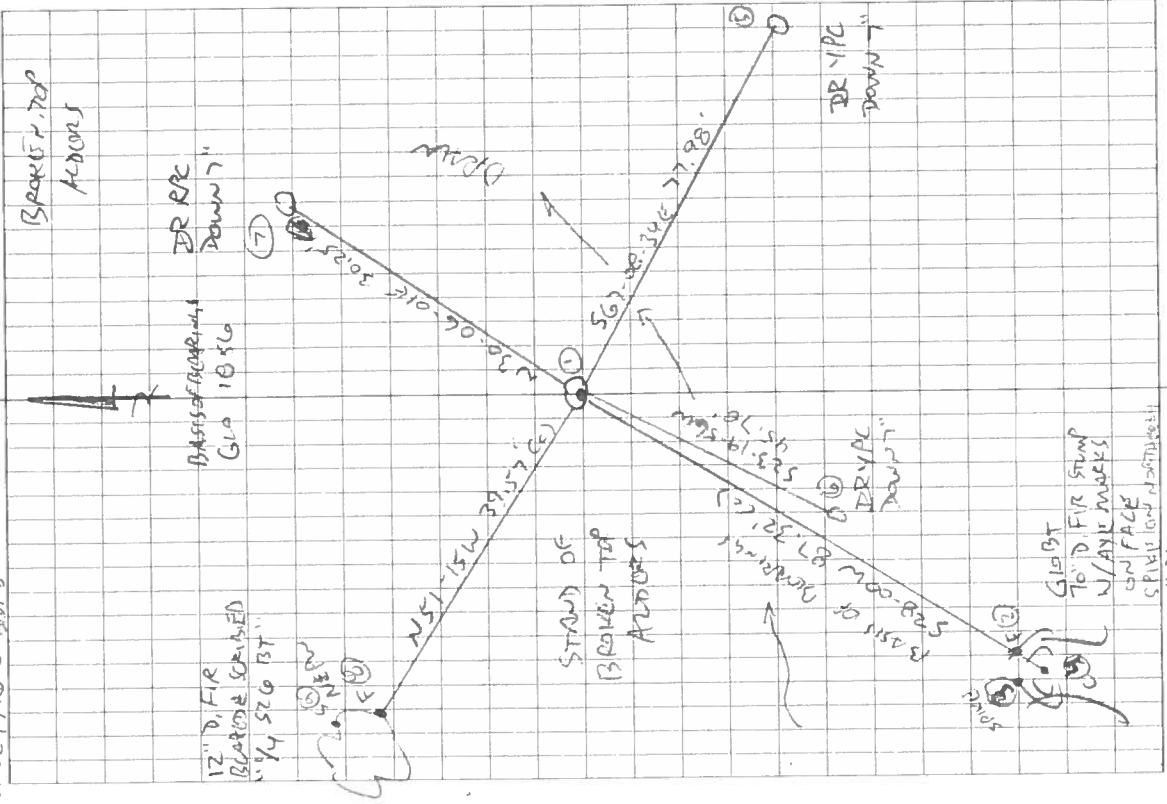
OREGON  
JANUARY 12, 1999  
DAVID L. MALONE  
51523

RENEWAL DATE: 12/31/20

11/12/2019  
D. MATHIAS  
P. A. TEBERACH

LOOL OVERCAST

NIKON NIVOLIC  
SURVEY PRO CALIBRATED



REMOVEMENT  
T105 RTW

107600240

1/4  
SZG | SZS

FD 1/2" BROW PIPE TOP IS BENT OVER AND BROKEN OFF,  
 POSITION 10" LEANING W-SW, POSSIBLY REMOVED FROM  
 GROUND AS THE BROKEN END WAS DOWN, DUG DOWN  
 TO WHERE I FOUND A VERTICAL HOLE AND HOLD  
 AS THE ORIGINAL POSITION OF THE PIPE, FD  
 WHITE FIBERGLASS POST 4" NORTH, REMOVED PIPE  
 AND OVER VERTICAL HOLE SET 2" x 3 1/2" G.I.P  
 W/ 3-1/4" BRASS DISK CEMENTED IN THE TOP, 1" ABOVE  
 GROUND SURFACE. FD AND HOLD SW G.I.P STUMP  
 FOR BASIS OF REMAINING. SET 3 NEW IRON ROD  
 ACCESSORIES AND BLADED & SCRIBED 1 NEW BROWNING  
 TRENCH, UPON DOWNS-CHECKING, FD DISTANCE OFF TO G.I.P. DUG  
 AT SPOT INDICATED BY CORRECT DISTANCE AND FD VERTICAL HOLE. HODD  
 THIS HOLE AS THE ORIGINAL POSITION OF THE PIPE SET BY W.C.G. AND  
 RESET THE 2" PIPE & BRASS DISK AT THIS LOCATION. RE. THE  
 ACCESSORIES, MARK ON OPPOSITE PAGE IS CORRECT. RESET WITH POST 12" DIA.  
 DR = 5/8" x 30" BROW ROD  
 V.I.P OR R.C = YELLOW OR RED PLASTIC  
 CAP MARKED "HEMLOCK COUNTY  
 SUPERVISOR"  
 NEAR = NAIL & PLASTIC WATHOR  
 MARKED "SURVEY MARKER"  
 DO NOT REMOVE"  
 T105 RTW  
 SZG | SZS  
 1/4  
 2019  
 3-1/4" BRASS DISK



BENTON COUNTY SURVEYORS OFFICE - CORNER RESTORATION

3174

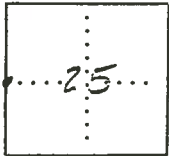
T 10 S, R 7 W, W. B. & M., BENTON COUNTY, OREGON

REPORTED BY Jimi Young

SECTION 25

TITLE \_\_\_\_\_

DATE 2-13-53



● OFFICIAL CORNER FOUND

○ CORNER SET

107600240

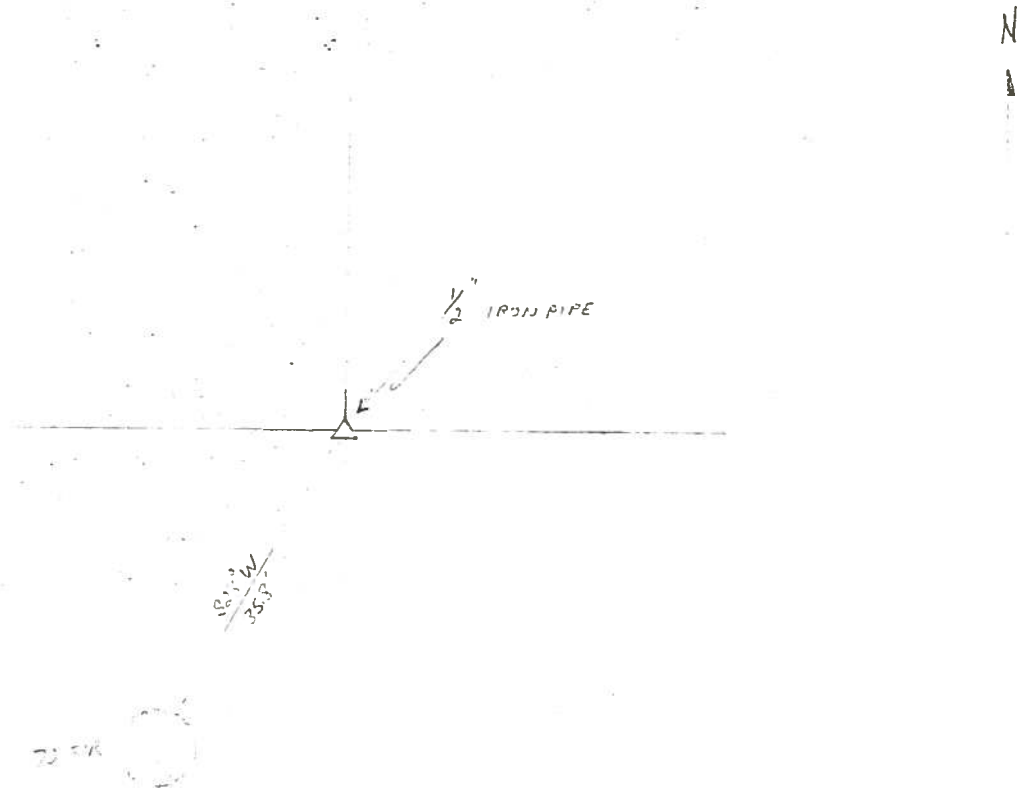
LEGIBLE MARKS ON BEARING OBJECTS

1/4 CORNER COMMON TO SEC. 26, 25, \_\_\_\_\_ & \_\_\_\_\_  
IS 1/2" PIPE

DESCRIBE
ADDITIONAL INFORMATION

" 1/4 BLAZED IN SPARK SPIKE NEAR CORNER ON NORTH SIDE	SEE	REVERSE	
KIND <u>D-FIT</u>			
SIZE <u>70"</u>			
BEARING <u>S27°W</u>			
DISTANCE <u>35.3'</u>			
BT TAG POSTED			

OVER



18.12 W  
35.3'

N

BENTON COUNTY CORNER RESTORATION BOOK NO. 1

C.S. #  
 by Witnesses  
 1/2 Geo. Marks  
 Armstrong & Son  
 by W.C. Galloway C.S.  
 1 Sept. 29, 1942  
 2 Feb. 28, 1942 by  
 E W.C. Galloway C.S.  
 3 K.M. Patterson  
 4 Chas. Schuster

1/4 Sec. Cor. bet. Secs. 22 and 27 T10-7  
 Set a concrete post 7"x7"x 26" 1/2 way bet. section corners.  
 Cedar 18" in dia. bears S. 40° 06' E. 1.812  
 Fir 8" " " S 87° 20' W. 3.335 cts. h. cen. of straight part.

Co. 1  
 July 18,  
 Witness

1/4 Sec. Cor. bet. Secs. 25 and 26 T10-7  
 Set a 1/2 galv. pipe 30" long from  
 Fir 40" in dia. (now 66") bears S 28° W 85.3 ft = 130 cts. to spike N.  
 " 7" " S. 52 1/2° E. 12.9' = 195 cts., blazed, not scribed



Corner to Secs. 23, 24, 25 & 26 T. 10-7  
 as above  
 (R) Set a 1/2" galv. pipe 30" long from  
 Fir 18" (now 66") in dia. bears N. 85° 40' E., N. 83° 51 1/2' E. 99' = 150 cts. to head of spike N.  
 " 40" (now 66") " " S. 75° 20' E., S. 78° 41' E. 47.52' = .72 " " " " N.  
 " 40" (now 66") " " S. 68° 30' W., S. 69° 50 1/2' W. 113' = 1.712 " " " " N.  
 " 10" (now 32") " " N. 80° W., N. 80° 57' W. 91.08' = 1.38 " " " " S.

C.S.  
 Dec. 1  
 Wurre  
 Walte

C.S. #316  
 by W.C. Galloway  
 Witnesses Mch. 2, 1944  
 2 Orvil Tandy  
 3 Marvin Bennett  
 4 Mkd. " 11" " " " N. 88° W. 1.076 cts.

C.S.  
 Dec.  
 by W  
 Adria  
 Wal

March 4, 1944  
 John Rickard  
 and Orvil Tandy  
 Marvin Bennett  
 Corner to Secs. 26, 27, 34 & 35 T. 11 S. R. 6 W.  
 Set 1/2 of a buggy axle  
 Oak 24" in diameter bears N. 18° W. 8.37 cts. Std. found letters  
 " 15" " " " N. 15° E. 6.20 " " good shape  
 Marked fir 3" " " " N. 47 1/2° E. .145 "  
 " " 4" " " S. 38 1/2° W. .143 "  
 " " 4" " " S. 76 1/2° W. .501 "  
 " " 5" " " N. 12° W. .185 "

C.S.  
 Sep  
 W.C.  
 P.M

March 10 1944  
 Witnesses as above  
 Orvil Tandy and  
 E.E. McCormick.  
 N.W. Corner of Geo. A. Wells D.L.C. # 46 T11-6  
 Set a 1/2 of a buggy axle 1 1/2" x 30" bet. 2 rocks  
 Oak 12" in dia. bears S. 61° E. 1.35 lying down checks.  
 " 12" " " S. 45° W. .63 cts. nearly dead "  
 Mkd. fir 14" " " S. 87 1/2° E. .144 "  
 " " 14" " " N. 57° W. .236 "

by  
 De  
 Witne  
 John

C.S. 316  
 Mch. 11, 1944  
 as above  
 L  
 i  
 R S.W. Corner of Geo. A. Wells D.L.C. # 46 T11-6  
 Set a 3/4" pipe 4' long 32" up. Driven in root, set from  
 Oak 12" in dia. bears N. 7° 22' E. 1.73 std., green, found letters.  
 " 12" " " N. 79° 10' W. 2.44 Stub 6' std.  
 Mkd. fir 14" " " S 77° E. .204 cts.  
 " forked fir 18" " " S. 83 1/2° W. .340 " cen. of bottom.

C.  
 Ja  
 by  
 J.L.



$\frac{1}{4}$ -Section corner between sections 25 and 26, Twp. 10-7

552 687

Reestablishment by W. C. Galloway-

February 28, 1942

Set a  $\frac{1}{2}$ " galvanized pipe 30" long

Fir 40" in diam bears S 28° W

1.30 chains

Fir 7" in diam bears S 52 $\frac{1}{2}$ ° E

.195 chains

Witness V. M. Patterson and Charles Schuster