

107600300

CORNER FILE TRACKING

S:\Survey Corners\CORNERS\Templates\Filetrac2.doc
10/04/2010

CORNER NUMBER
107600300

STEP	HISTORY	RESTORATION
Form Prepared, DB	9/28/17	10/24/19
Field Inspection, DB	10/21/19	10/21/19
Finish index (count unit)	9/28/17	10/21/19
Counter Index	10/24/19	10/24/19
GIS Index Form	10/22/19	10/22/19
Checked, DB	10/25/19	10/25/19
Form Edited, DB	10/31/19	10/31/19
Form Signed, DB	10/31/19	10/31/19
Authorize Payment, DB	—	—
Archive Digital Files	10/31/19	10/31/19
Collect Documents	10/31/19	10/31/19
PDF File	10/31/19	10/31/19
Copy For Filming	10/31/19	10/31/19
Scanned (pdf to laserfiche)	10/31/19	10/31/19
Filmed (Archived), DB		
Filed, DB		

(DB) = Entry needed in database (Access).

COMMENTS:

DATE 09/28/2017TOWNSHIP 10 SOUTH, RANGE 7 WEST, WILLAMETTE MERIDIAN; SECTION 23 CORNER SOUTHEAST
DONATION LAND CLAIM N/A CORNER N/A**COMMON CORNER(S):**

SOUTHWEST CORNER SECTION 24, NORTHWEST CORNER SECTION 25, NORTHEAST CORNER SECTION 26

RECORDS (INFORMATION IN *BOLD ITALICS* IS COUNTY STAFFS' INTERPRETATION OF THE RECORD)

BASED ON EXTENSIVE RESEARCH AND RECOVERY OF EVIDENCE, THIS OFFICE HAS DETERMINED THAT MOST GENERAL LAND OFFICE SURVEYORS IN BENTON COUNTY MEASURED TO THE FACE OF BEARING TREES.

- [01] GENERAL LAND OFFICE (GLO) NOTES BY DENNIS HATHORN, D.S., DATED AUGUST 26, 1856. *SET POST FROM WHICH A FIR 40" DIA BEARS S75°E, 72 LINKS (47.52 FEET); A FIR 18" DIA BEARS N83°E, 150 LINKS (99.00 FEET); A FIR 10" DIA BEARS N80°W, 138 LINKS (91.08 FEET); A FIR 40" DIA BEARS S70°W, 160 LINKS (105.60 FEET).*
- [02] BENTON COUNTY LOOSE LEAF ROAD NOTES FOR BOTTGER-BONNER MTN. SECTION SUMMIT HOSKINS ROAD BY W. C. GALLOWAY, C.S., DATED FEBRUARY 28, 1942. *SET A 1/2" PIPE. FIR 18" (NOW 66") DIA (GLO BT) BEARS N85°40'E, 99 FEET, SPIKE NORTH, N83°51-1/2'E TO HEAD OF SPIKE; FIR 40" (NOW 66") DIA (GLO BT) BEARS S75°20'E, 47.52 FEET, SPIKE NORTH, S78°41'E TO HEAD OF SPIKE; FIR 40" (NOW 66") DIA (GLO BT) BEARS S68°30'W, 113.0 FEET, SPIKE NORTH, S69°50-1/2'W TO HEAD OF SPIKE; FIR 10" (NOW 32") DIA (GLO BT) BEARS N80°W, 91.08 FEET, SPIKE SOUTH, N80°57'W TO HEAD OF SPIKE.*
- [03] BENTON COUNTY CORNER RESTORATION BOOK NO. 1, PAGE 232 BY W. C. GALLOWAY, C.S., DATED FEBRUARY 28, 1942. *SET A 1/2" GALVANIZED PIPE 30" LONG FROM FIR 18" (NOW 66") DIA (GLO BT) BEARS N85°40'E, N83°51-1/2'E 99 FEET = 1.50 CHAINS TO HEAD OF SPIKE NORTH; FIR 40" (NOW 66") DIA (GLO BT) BEARS S75°20'E, S78°41'E 47.52 FEET = 0.72 CHAINS TO HEAD OF SPIKE NORTH; FIR 40" (NOW 66") DIA (GLO BT) BEARS S68°30'W, S69°50-1/2'W, 113 FEET = 1.712 CHAINS TO HEAD OF SPIKE NORTH; FIR 10" (NOW 32") DIA (GLO BT) BEARS N80°W, N80°57'W 91.08 FEET = 1.38 CHAINS TO HEAD OF SPIKE SOUTH.*
- [04] BENTON COUNTY CORNER RESTORATION NO. 547. *TRANSCRIBED FROM RECORD [03] AND MAY CONTAIN ERRORS AND/OR OMISSIONS.*
- [05] BENTON COUNTY BOOK OF ROAD HARDCOPIES PAGE 82, ROUTE 54, ROAD NO. 626, BONNER MTN. SECTION OF SUMMIT-HOSKINS ROAD, BY W. C. GALLOWAY, COUNTY ENGINEER, DATED MAY, 1941. *1/2" PIPE.*
- [06] BENTON COUNTY MAP NO. 10-7-00012, UNKNOWN DRAFTSMAN, DATED FEBRUARY 28, 1942. *1/2" PIPE. FIR 18" (NOW 66") DIA (GLO BT) BEARS N85°40'E, N83°51-1/2'E 99 FEET TO HEAD OF SPIKE NORTH; FIR 40" (NOW 66") DIA (GLO BT) BEARS S75°20'E, S78°41'E 47.52 FEET TO HEAD OF SPIKE NORTH; FIR 40" (NOW 66") DIA (GLO BT) BEARS S68°30'W, S69°50-1/2'W, 113.00 FEET TO HEAD OF SPIKE NORTH; FIR 10" (NOW 32") DIA (GLO BT) BEARS N80°W, N80°57'W 91.08 FEET TO HEAD OF SPIKE SOUTH.*
- [07] BENTON COUNTY SURVEY NO. 1737 (OLD NO. 272) FIELD NOTES (FIELD BOOK 46, PAGE 85) BY W. C. GALLOWAY, C.S., DATED NOVEMBER 23, 1945. *1/2" GALVANIZED PIPE, ALL TREES STANDING.*
- [08] BENTON COUNTY MAP NO. 10-7-00020, BY W. C. GALLOWAY, C.S., NO DATE GIVEN. *1/2" GALVANIZED PIPE.*
- [09] BENTON COUNTY MAP NO. 10-7-00006, NO DATE OR DRAFTSMAN GIVEN. *1/2" GALVANIZED PIPE.*
- [10] BENTON COUNTY SURVEY NO. 2043 BY OTTO H. MEYER, P.E., DATED AUGUST 22, 1948. *PIPE IN PLACE.*
- [11] BENTON COUNTY SURVEY NO. 2130 BY CURTIS C. HANSON DATED JUNE 23, 1949. *FOUND 1/2" PIPE.*
- [12] BENTON COUNTY CORNER RESTORATION NO. 547 BY UNKNOWN DRAFTSMAN, DATED JUNE, 1952. *ALL STUMPS IN.*
- [13] BENTON COUNTY CORNER RESTORATION NO. 3876 BY DANNA L. FEHRENBACHER, C.S., DATED JANUARY 17, 1991. *FOUND 1/2" INSIDE DIAMETER IRON PIPE FOR THE CORNER. FOUND A PARTLY ROTTED FIR STUMP 72" DIA (GLO BT) WITH A SPIKE IN THE NORTHERLY SIDE WHICH BEARS S76°E, 47.32 FEET. FOUND A PARTLY ROTTED FIR STUMP 66" DIA (GLO BT) BEARS S72°W, 116.0 FEET. FOUND A PARTLY ROTTED FIR STUMP 42" DIA (GLO BT) WITH A SPIKE IN THE SOUTHERLY SIDE WHICH BEARS N77°W, 90.82 FEET. FOUND A PARTLY ROTTED FIR STUMP 70" DIA (GLO BT) BEARS N89°E, 100.3 FEET. FOUND A SPIKE IN THE NORTHEASTERLY BASE. SET 2" INSIDE DIAMETER X 36" LONG IRON PIPE WITH A 3-1/4" BENTON COUNTY BRASS CAP STAMPED "T10S R7W S23 S24 S26 S25 1991" CENTERED OVER THE RECOVERED 1/2" PIPE. FIR 29" DIA BEARS N68°E, 34.03 FEET, FACED AND SCRIBED "T10S R7W S24 BT". SET A PK NAIL AND BRASS WASHER STAMPED "BENTON COUNTY SURVEYOR" (BCBW) IN THE SOUTHERLY BASE. FIR 8" DIA BEARS S44°E, 15.26 FEET, FACED AND SCRIBED "T10S R7W S25 BT". SET A PK NAIL AND BCBW IN THE SOUTHWESTERLY BASE. FIR 6" DIA BEARS S25°W, 21.85 FEET, FACED AND SCRIBED "X BT". SET A PK NAIL AND BCBW IN THE WESTERLY BASE. FIR 14" DIA BEARS N47°W, 17.83 FEET, FACED AND SCRIBED "T10S R7W S23 BT". SET A PK NAIL AND BCBW IN THE SOUTHWESTERLY BASE. SET ORANGE FIBERGLASS "SURVEY STAKE" POST 1 FOOT SOUTHERLY.*
- [14] BENTON COUNTY SURVEY NO. 9184 BY CHRIS J. HUMCKE, P.L.S., DATED FEBRUARY 5, 1997. *FOUND 2" INSIDE DIAMETER X 36" LONG IRON PIPE WITH A 3-1/4" BENTON COUNTY BRASS CAP AND BEARING TREES.*
- [15] BENTON COUNTY PARTITION PLAT NO. 2000-11 BY JAMES T. EDWARDS, P.L.S., DATED AUGUST 30, 1999. *FOUND BENTON COUNTY BRASS CAP AND BEARING TREES.*

FIRM/AGENCY: BENTON COUNTY SURVEYOR'S OFFICE
ADDRESS: 360 S.W. AVERY AVE., CORVALLIS, OR 97333; PH. 541-766-6821
RESEARCH BY: DAVID L. MALONE, P.L.S.
DATA ENTRY BY: SAME

BENTON COUNTY CORNER RESTORATION FORM, PAGE 1 OF 3, 107600300R3**SEE CORNER HISTORY FORM FOR RECORDS ETC.**

CORNER RESTORATION FIELD BOOK NUMBER 32 PAGE(S) 49 DATE 10/21/2019
TOWNSHIP 10 SOUTH, RANGE 7 WEST, WILLAMETTE MERIDIAN; SECTION 23 CORNER SOUTHEAST
DONATION LAND CLAIM N/A CORNER N/A
CONDITION REPORT ___; REFERENCED OUT X; RENEWED ___; SURVEYED IN ___

LOCATION AND COMMENTS:

CORNER IS LOCATED ON A MODERATE SOUTH FACING SLOPE IN A MIXED AGE, MIXED TYPE STAND OF TREES BETWEEN TWO ROADS WITH A RECENT CLEARCUT TO THE NORTHWEST AND ±40 YEAR OLD D. FIR TO THE SOUTHWEST. TO REACH CORNER FROM THE INTERSECTION OF HOSKINS ROAD AND LUCKIAMUTE ROAD, TRAVEL WESTERLY ALONG HOSKINS ROAD FOR 2.42 MILES TO A STARKER FORESTS GATE ON THE RIGHT, TURN RIGHT THROUGH GATE AND FOLLOW ROAD FOR 0.30 MILES TO A WYE, STAY LEFT FOR 0.02 MILES AND PARK. CORNER IS ON THE EAST SIDE OF THE ROAD ABOUT 15 FEET. CORNER IS BAD FOR PREMARKING AND GPS CONTROL.

MONUMENTS AND ACCESSORIES FOUND (CONDITION AND SOURCE):

1. FOUND 3-1/4" BRASS DISK STAMPED AS SHOWN ON PAGE 3 OF 3, CEMENTED IN 2" IRON PIPE, FIRMLY SET AND UNDISTURBED, FLUSH WITH GROUND SURFACE FOR THE CORNER.
(SET POST AS PER RECORD [01]).
(SET 1/2" PIPE AS PER RECORD [02]).
(SET 1/2" GALVANIZED PIPE 30" LONG AS PER RECORD [03]).
(1/2" PIPE AS PER RECORDS [05], [06] AND [11]).
(1/2" GALVANIZED PIPE AS PER RECORDS [07] – [09]).
(PIPE IN PLACE AS PER RECORD [10]).
(FOUND 1/2" INSIDE DIAMETER IRON PIPE FOR THE CORNER. SET 2" INSIDE DIAMETER X 36" LONG IRON PIPE WITH A 3-1/4" BENTON COUNTY BRASS CAP STAMPED "T10S R7W S23 S24 S26 S25 1991" CENTERED OVER THE RECOVERED 1/2" PIPE AS PER RECORD [13]).
(FOUND 2" INSIDE DIAMETER X 36" LONG IRON PIPE WITH A 3-1/4" BENTON COUNTY BRASS CAP AS PER RECORD [14]).
(FOUND BENTON COUNTY BRASS CAP AS PER RECORD [15]).
2. FOUND D. FIR 41" DIA WITH HEALED FACE BEARS N68°00'E, 34.54 FEET TO CENTER. SET ALUMINUM NAIL AND PLASTIC WASHER IN THE SOUTHEASTERLY BASE FOR DISTANCE MEASUREMENT. **BASIS OF BEARINGS FOR THIS RESTORATION.**
(FIR 29" DIA BEARS N68°E, 34.03 FEET, FACED AND SCRIBED "T10S R7W S24 BT" AS PER RECORD [13]).
(FOUND BEARING TREES AS PER RECORDS [14] AND [15]).
3. FOUND ROTTEN D. FIR STUMP 71" DIA BEARS S73°47'E, 49.12 FEET TO CENTER.
(FIR 40" DIA BEARS S75°E, 72 LINKS [47.52 FEET] AS PER RECORD [01]).
(FIR 40" (NOW 66") DIA BEARS S75°20'E, 47.52 FEET, SPIKE NORTH, S78°41'E TO HEAD OF SPIKE AS PER RECORD [02]).
(FIR 40" (NOW 66") DIA BEARS S75°20'E, S78°41'E 47.52 FEET = 0.72 CHAINS TO HEAD OF SPIKE NORTH AS PER RECORD [03]).
(FIR 40" (NOW 66") DIA BEARS S75°20'E, S78°41'E 47.52 FEET TO HEAD OF SPIKE NORTH AS PER RECORD [06]).
(ALL TREES STANDING AS PER RECORD [07]).
(ALL STUMPS IN AS PER RECORD [12]).
(FOUND PARTLY ROTTED FIR STUMP 72" DIA WITH A SPIKE IN THE NORTHERLY SIDE WHICH BEARS S76°E, 47.32 FEET AS PER RECORD [13]).
4. FOUND D. FIR 23" DIA WITH HEALED FACE BEARS S46°35'E, 15.56 FEET TO CENTER. SET ALUMINUM NAIL AND PLASTIC WASHER IN THE NORTHEASTERLY BASE FOR DISTANCE MEASUREMENT.
(FIR 8" DIA BEARS S44°E, 15.26 FEET, FACED AND SCRIBED "T10S R7W S25 BT" AS PER RECORD [13]).
(FOUND BEARING TREES AS PER RECORDS [14] AND [15]).
5. FOUND ROTTEN D. FIR STUMP 70" DIA BEARS S70°38'W, 115.42 FEET TO CENTER.
(FIR 40" DIA BEARS S70°W, 160 LINKS [105.60 FEET] AS PER RECORD [01]).
(FIR 40" (NOW 66") DIA BEARS S68°30'W, 113.0 FEET, SPIKE NORTH, S69°50-1/2'W TO HEAD OF SPIKE AS PER RECORD [02]).
(FIR 40" (NOW 66") DIA BEARS S68°30'W, S69°50-1/2'W, 113 FEET = 1.712 CHAINS TO HEAD OF SPIKE NORTH AS PER RECORD [03]).
(FIR 40" (NOW 66") DIA BEARS S68°30'W, S69°50-1/2'W, 113.00 FEET TO HEAD OF SPIKE NORTH AS PER RECORD [06]).
(ALL TREES STANDING AS PER RECORD [07]).
(ALL STUMPS IN AS PER RECORD [12]).
(FOUND PARTLY ROTTED FIR STUMP 66" DIA BEARS S72°W, 116.0 FEET AS PER RECORD [13]).
6. FOUND D. FIR STUMP 27" DIA WITH HEALED FACE BEARS N47°52'W, 17.64 FEET TO CENTER. SET ALUMINUM NAIL AND PLASTIC WASHER IN THE TOP CENTER OF THE STUMP FOR DISTANCE MEASUREMENT.
(FIR 14" DIA BEARS N47°W, 17.83 FEET, FACED AND SCRIBED "T10S R7W S23 BT" AS PER RECORD [13]).
(FOUND BEARING TREES AS PER RECORDS [14] AND [15]).

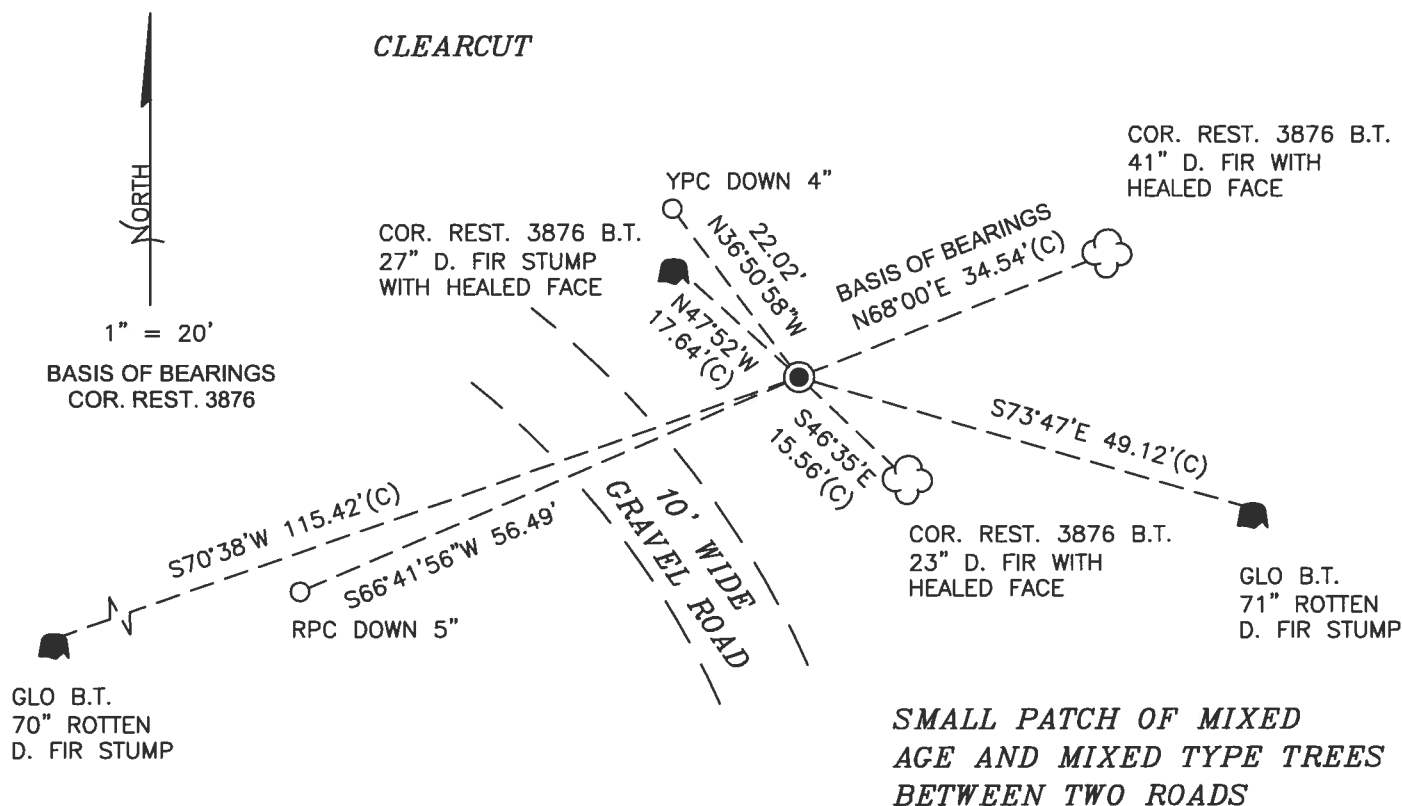
**BENTON COUNTY CORNER RESTORATION FORM, PAGE 2 OF 3, 107600300R3
SEE CORNER HISTORY FORM FOR RECORDS ETC.**

DATE 10/21/2019

MONUMENT SET (PROCEDURES AND DESCRIPTION):

FOUND 3-1/4" BRASS DISK STAMPED AS SHOWN ON PAGE 3 OF 3, CEMENTED IN 2" IRON PIPE, FIRMLY SET AND UNDISTURBED, FLUSH WITH GROUND SURFACE FOR THE CORNER. THE BRASS DISK IN IRON PIPE WAS SET IN 1991 BY DANNA L. FEHRENBACHER, C.S., OVER A 1/2" IRON PIPE WHICH WAS SET IN 1942 BY W. C. GALLOWAY, C.S., FROM FOUR GENERAL LAND OFFICE (GLO) BEARING TREES. ALL FOUR GLO BEARING TREES ARE NOW STUMPS. FOUND THE NORTHWEST AND NORTHEAST GLO BEARING TREE STUMPS AT APPROXIMATE RECORD BEARING AND DISTANCE BY HAND COMPASS AND SPENCER'S TAPE. SURVEYED TO THE SOUTHWEST AND SOUTHEAST GLO BEARING TREE STUMPS. THE SOUTHWEST GLO BEARING TREE WAS FOUND BY GALLOWAY TO BE LONG IN DISTANCE FROM THE REESTABLISHED CORNER POSITION. ALSO FOUND TWO BEARING TREES AND ONE BEARING TREE STUMP SET BY CORNER RESTORATION NO. 3876. THE BRASS DISK IS ACCEPTED AS THE PERPETUATION OF THE ORIGINAL CORNER POSITION.

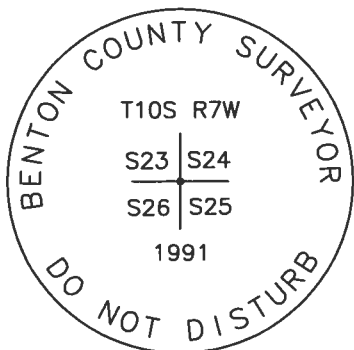
SET TWO NEW IRON ROD ACCESSORIES AS SHOWN ON PAGE 3 OF 3. FOUND ORANGE FIBERGLASS "SURVEY STAKE" POST 1 FOOT SOUTH OF BRASS DISK. FOUND WHITE FIBERGLASS POST 1 FOOT WEST OF BRASS DISK.



*±40 YEAR OLD D. FIR
WITH SOME DECIDUOUS*

*SMALL PATCH OF MIXED
AGE AND MIXED TYPE TREES
BETWEEN TWO ROADS*

MONUMENT DETAIL



3-1/4" BRASS DISK

LEGEND

- SET 5/8" X 30" REBAR WITH PLASTIC CAP
- YPC YELLOW PLASTIC CAP MARKED "BENTON COUNTY SURVEYOR"
- RPC RED PLASTIC CAP MARKED "BENTON COUNTY SURVEYOR"
- (C) MEASUREMENT TO CENTER
- GOVERNMENT MONUMENT FOUND AS SHOWN
- COR. REST. CORNER RESTORATION
- C.S.B.T. COUNTY SURVEYOR'S BEARING TREE
- GLO GENERAL LAND OFFICE
- B.T. BEARING TREE
- BEARING TREE STUMP AS NOTED
- ☼ BEARING TREE AS NOTED

NEW ACCESSORIES:

1. SET REBAR (SEE LEGEND) N36°50'58"W, 22.02 FEET AND 4 INCHES BELOW GROUND LEVEL.
2. SET REBAR (SEE LEGEND) S66°41'56"W, 56.49 FEET AND 5 INCHES BELOW GROUND LEVEL.

NOTES:

COMPASS DECLINATION IS 15° EAST. ALL MEASURED DISTANCES AND BEARINGS ARE TO THE CENTER OF THE OBJECT, UNLESS OTHERWISE NOTED. ALL BEARING TREES ARE PAINTED AND HAVE A B.T. TAG ATTACHED, FACING THE CORNER UNLESS OTHERWISE NOTED. ALL NEW BEARING TREES HAVE A PLASTIC WASHER (STAMPED "SURVEY MARKER DO NOT REMOVE") ATTACHED BY AN ALUMINUM NAIL TO THE SIDE CENTER OF THE TREE FOR DISTANCE MEASUREMENT, UNLESS OTHERWISE NOTED.

THIS RESTORATION WAS PERFORMED AT THE DIRECTION AND APPROVAL OF THE BENTON COUNTY SURVEYOR *JLM*

REGISTERED
PROFESSIONAL
LAND SURVEYOR

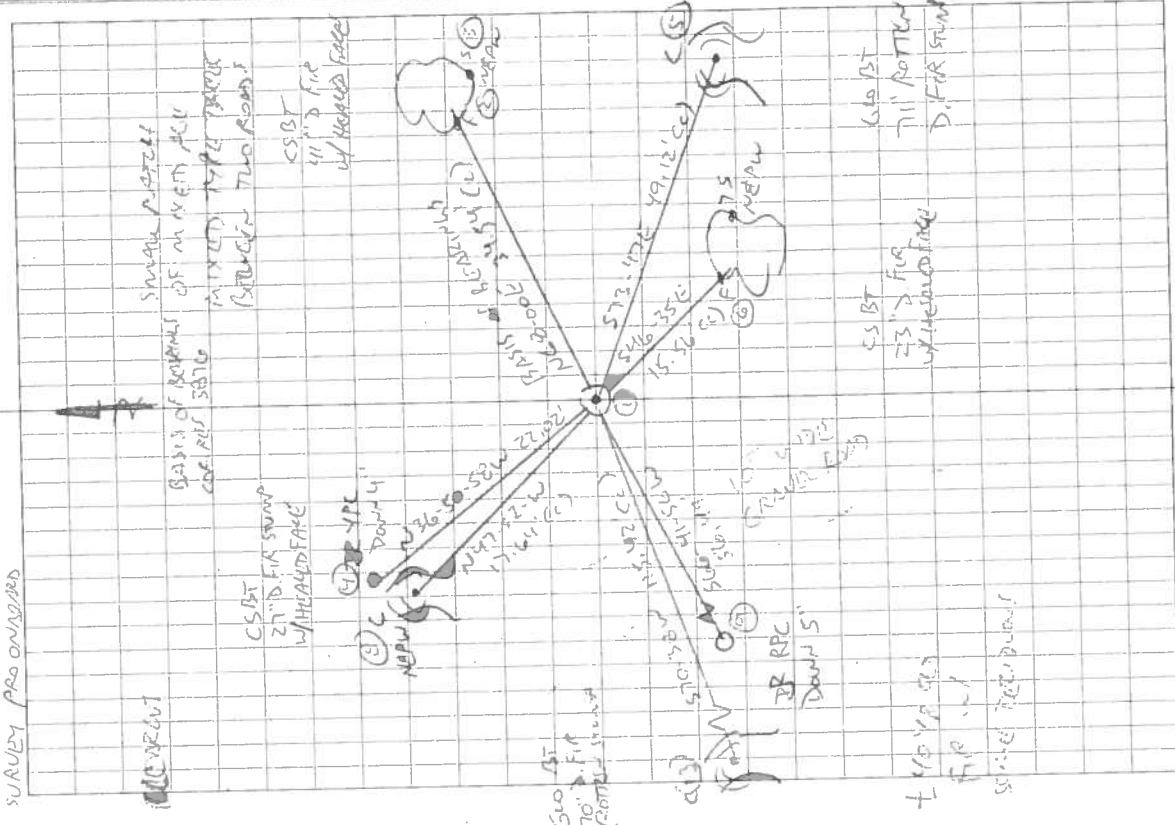
FIRM/AGENCY: BENTON COUNTY SURVEYOR'S OFFICE
 ADDRESS: 360 S.W. AVERY AVE., CORVALLIS, OR 97333; PH. 541-766-6821
 PRESENT: DAVID L. MALONE, P.L.S., AND BERNARD ALTENBACH, SURVEY TECH.
 EQUIPMENT: NIKON NIVO3.C WITH SURVEY PRO ONBOARD.

10/31/19 *P of J M*

OREGON
 JANUARY 12, 1999
 DAVID L. MALONE
 51523

RENEWAL DATE: 12/31/20

10/21/19
D. McLaughlin
B. A. Rembach
Cool, Ray
Mikow N103.2
SURVEY PROCEEDINGS



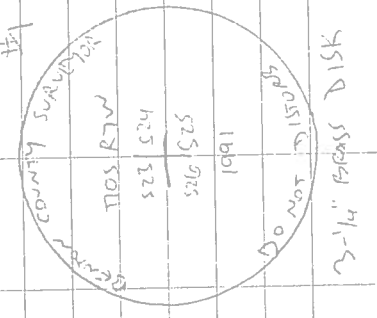
107600100

23124
20125

REFERENCE T105 RTW

FD 3-1/4" BRASS DISK IN 2" DEEP RPE FINELY SET & UNDISBURSED FOR THE ERROR, FLUSH W/ GROUND SURFACE, FD CHANGE FIBERGLASS "SURVEY STAKE" 1" WEST SOUTH OF BRASS DISK, FD WHITE FIBERGLASS POST 1" WEST OF BRASS DISK, FD & HOLD N.E. 1ST FROM COR. REST SETTING FOR BASIS OF MEASUREMENTS ALSO FD SC 1ST & NEW 1ST STUMP FROM COR. REST SETTING, FD & T105 SW & SE COR. STUMPS, ALSO FD N.E. & N.W. COR. STUMPS AT ALLEN. REPAIRING & DISTANCE BY HAND COMPASS & CHAIN, SPENCER TOPIC. SET 2 NEW IRON ROD ACCESSORIES.

BR = 5/8" x 10" DEEP HD
YRC OR RPE = FOLLOW UP ROD
PLASTIC CAP MARKER
"HASTON COUNTY SURVEYOR"
NEPWS = NAIL & PLASTIC W/ ALUM MARKER
DO NOT REMOVE



BENTON COUNTY CORNER RESTORATION FORM

107600300

3876

SECTION 23 TOWNSHIP 10 S RANGE 7 W DLC _____ CORNER SE

DATE 1/17/91 CORNER RESTORATION FIELD BOOK NUMBER 2 PAGE 31

CORNER DESIGNATION:

THE SECTION CORNER COMMON TO SECTIONS 23, 24, 25 AND 26, IN T 10 S, R 7 W, WILLAMETTE MERIDIAN.



- _____ CONDITION REPORT ONLY
- _____ REFERENCED OUT
- XX RENEWED
- _____ SURVEYED IN

LOCATION AND COMMENTS:

THE CORNER IS LOCATED ON A SOUTHERLY SLOPING, HEAVILY WOODED, HILLSIDE NEAR THE NORTHEAST CORNER OF A CLEAR CUT THAT WAS REPLANTED 10 TO 15 YEARS AGO.

PREVIOUS RENEWALS/SURVEYS, ETC.:

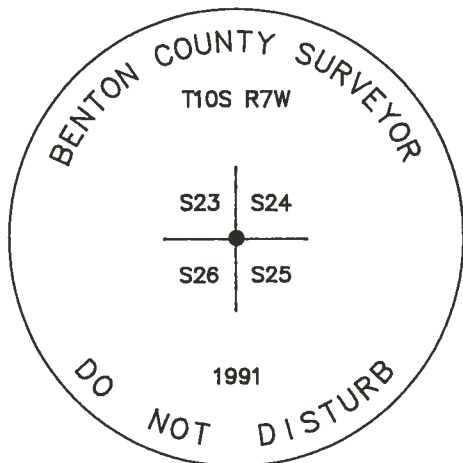
- ORIGINAL GLO SURVEY BY DENNIS HATHORN IN 1856.
- OLD CORNER BOOK NO. 1 PAGE 232 BY W.C. GALLOWAY ON FEBRUARY 28, 1942.
- CORNER RESTORATION NO. 547 BY W.C. GALLOWAY ON FEBRUARY 28, 1942.
- COUNTY SURVEY NO. 1737 BY W.C. GALLOWAY ON NOVEMBER 23, 1945.
- COUNTY SURVEY NO. 2043 BY OTTO MEYER ON AUGUST 28, 1948.
- COUNTY SURVEY NO. 2130 BY CURTIS C. HANSON ON JUNE 23, 1949.
- CORNER RESTORATION NO. 547 BY AN UNKNOWN PERSON IN JUNE OF 1952.

MONUMENTS AND ACCESSORIES FOUND (CONDITION AND SOURCE):

- FOUND: 1/2" INSIDE DIAMETER IRON PIPE FOR THE CORNER (CORNER RESTORATION NO. 547).
- FOUND: A PARTLY ROTTED FIR STUMP 72" IN DIAMETER WITH A SPIKE IN THE NORTHERLY SIDE. THE SPIKE BEARS S 76° E 47.32 FEET (S 78° 41' E 47.52 FEET TO THE SPIKE, OLD CORNER BOOK NO. 1 PAGE 232). SET A B.T. TAG ON THE WESTERLY FACE.
- FOUND: A PARTLY ROTTED FIR STUMP 66" IN DIAMETER BEARS S 72° W 116.0 FEET (S 69° 50' 30" W 112.99 FEET TO A SPIKE IN THE NORTH SIDE, OF THE TREE, OLD CORNER BOOK NO. 1 PAGE 232). SET A B.T. TAG ON THE EASTERLY FACE.
- FOUND: A PARTLY ROTTED FIR STUMP 42" IN DIAMETER WITH A SPIKE IN THE SOUTHERLY SIDE. THE SPIKE BEARS N 77° W 90.82 FEET (N 80° 57' W 91.08 FEET TO THE SPIKE, OLD CORNER BOOK NO. 1 PAGE 232). SET A B.T. TAG ON TOP.
- FOUND: A PARTLY ROTTED FIR STUMP 70" IN DIAMETER BEARS N 89° E 100.3 FEET (N 85° E 99.00 FEET ORIGINAL GLO FACE MEASUREMENT). SET A B.T. TAG ON THE WESTERLY FACE. FOUND A SPIKE IN THE NORTH-EASTERLY BASE.

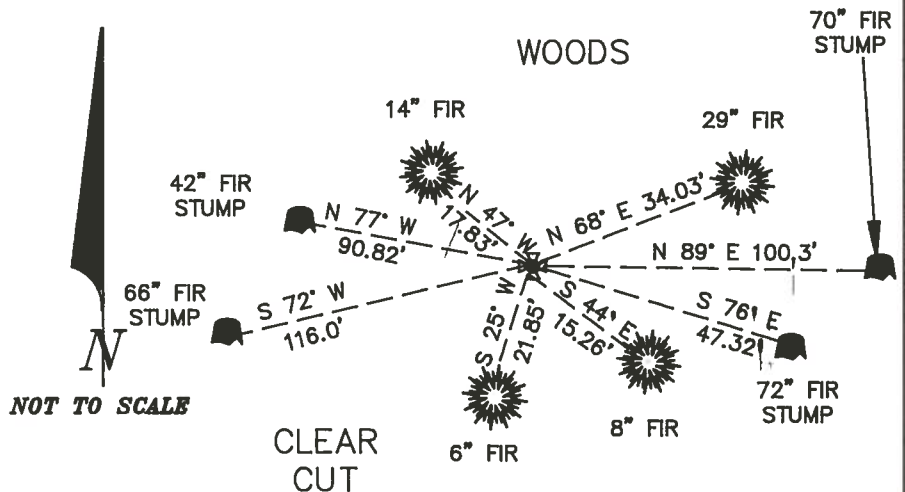
NO OTHER RECORD BEARING OBJECTS WERE RECOVERED.

MONUMENT DETAIL



3 1/4" BRASS CAP

SKETCH



MONUMENT SET (PROCEDURES AND DESCRIPTION):

SET: 2" INSIDE DIAMETER X 36" LONG IRON PIPE WITH A 3 1/4" BENTON COUNTY BRASS CAP STAMPED AS SHOWN CENTERED OVER THE RECOVERED 1/2" PIPE.

NEW ACCESSORIES:

- A FIR 29" IN DIAMETER BEARS N 68° E 34.03 FEET, FACED AND SCRIBED "T10S R7W S24 BT". SET A PK NAIL AND B.C.B.W. IN THE SOUTHERLY BASE. SET A B.T. TAG ON THE WESTERLY FACE.
- A FIR 8" IN DIAMETER BEARS S 44° E 15.26 FEET, FACED AND SCRIBED "T10S R7W S25 BT". SET A PK NAIL AND B.C.B.W. IN THE SOUTHWESTERLY BASE. SET A B.T. TAG ON THE NORTHWESTERLY FACE.
- A FIR 6" IN DIAMETER BEARS S 25° W 21.85 FEET, FACED AND SCRIBED "X BT". SET A PK NAIL AND B.C.B.W. IN THE WESTERLY BASE. SET A B.T. TAG ON THE NORTHEASTERLY FACE.
- A FIR 14" IN DIAMETER BEARS N 47° W 17.83 FEET, FACED AND SCRIBED "T10S R7W S23 BT". SET A PK NAIL AND B.C.B.W. IN THE SOUTHWESTERLY BASE. SET A B.T. TAG ON THE SOUTHEASTERLY FACE.

SET: ORANGE FIBERGLASS "SURVEY STAKE" POST 1 FOOT SOUTHERLY.

NOTES:

B.C.B.W. IS A BRASS WASHER STAMPED "BENTON COUNTY SURVEYOR". COMPASS DECLINATION IS 20° EAST. ALL MEASURED DISTANCES AND COMPASS BEARINGS ARE TO THE CENTER OF THE OBJECT, UNLESS OTHERWISE NOTED.

FIRM/AGENCY: BENTON COUNTY SURVEYOR

ADDRESS: 360 S.W. AVERY AVE. CORVALLIS OR. 97333; PH. 757-6821

PARTY CHIEF: CURTIS J. LIESENFELT

CREW: MARK E. ANDERSON

WITNESS:

REGISTERED
PROFESSIONAL
LAND SURVEYOR

Danna L. Fehrenbacher

OREGON
JULY 16, 1982
DANNA L. FEHRENBACHER
1995

T105 R7W SECT. 23 SE COR.
 E No. 12" I.D.P FOR THE COR. (COR. REST. NO. 547)

A PARTLY ROTTED FIR STUMP @ A SPIKE IN THE N¹⁴ SIDE
 THE SPIKE BEARS S 76° E ~ 47.33'. (S 78° 41' E ~ 47.52' TO THE SPIKE
 OLD COR. BOOK NO. 1 PG. 232). SET A B.T. TAG ON THE
 W¹⁴ FACE.

A PARTLY ROTTED FIR STUMP 66" IN DIA. BEARS 72° W ~
 116.0'. (S 69° 00' W ~ 112.29 TO A SPIKE IN THE N.S. OF OF
 THE OLD COR. BOOK. NO. 1 PG. 232). SET A B.T. TAG ON
 THE E¹⁴ FACE.

A PARTLY ROTTED FIR STUMP 42" IN DIA. @ A SPIKE IN THE
 S¹⁴ SIDE. THE SPIKE BEARS N 77° W ~ 90.82'. (N 80° 57' W ~
 91.08 TO THE SPIKE OLD COR. BOOK NO. 1 PG. 232). SET A
 B.T. TAG ON TOP.

A PARTLY ROTTED FIR STUMP 70" IN DIA. BEARS N 89° E ~
 100.3'. (N 85° E ~ 99.00' OR 16.60' FACE MEAS. SET A
 B.T. TAG ON THE W¹⁴ FACE. FMO. A SPIKE IN THE
 N.E. 1/4 BASE.

NO OTHER RECORD BEARING OBJECTS WERE RECOVERED.

SET: 2" I.D. x 36" LONG IRON PIPE @ A 3/4" BEN CO. B.G.
 STAMPEO AS SHOWN CENTERED OVER THE RECOVERED
 1/2" PIPE.

A FIR 29" IN DIA BEARS N 68° E ~ 34.03' FACED & SCRIBED
 T105 R7W S24 BT'. SET A PK & B.C.B.W. IN THE S¹⁴ BASE
 SET A B.T. TAG ON THE W¹⁴ FACE.

A FIR 8" IN DIA BEARS S 44° E ~ 15.26' FACED & SCRIBED
 T105 R7W S25 BT'. SET A PK & B.C.B.W. IN THE SW¹⁴
 BASE. SET A B.T. TAG ON THE NW¹⁴ FACE.

A FIR 6" IN DIA BEARS S 25° W ~ 21.85' FACED & SCRIBED
 T105 R7W S23 BT'. SET A PK & B.C.B.W. IN THE W¹⁴ BASE. SET
 A B.T. TAG ON THE NE¹⁴ FACE.

A FIR 14" IN DIA. BEARS N 47° W ~ 17.83' FACED & SCRIBED
 T105 R7W S23 BT'. SET A PK & B.C.B.W. IN THE SW¹⁴
 BASE. SET A B.T. TAG ON THE SE¹⁴ FACE.

SET: ORANGE FIBERGLASS "SURVEY STAKE" POST 1' S¹⁴.

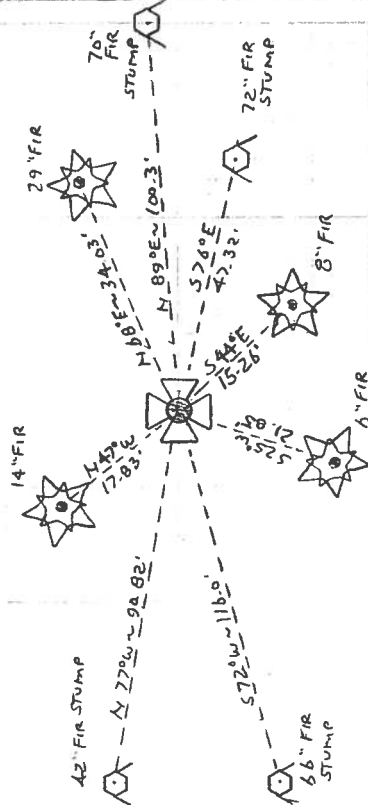
THE COR. IS LOCATED ON A S¹⁴ SLOPING HEAVILY WOODED
 HILLSIDE NEAR THE NE COR. OF A CLEAR CUT ~~ADJACENT~~
 THAT WAS REPLANTED 10-15 YRS. AGO. IT IS POOR FOR
 PREREMARKING & GPS CONTROL.

117153; 272; W105 R7W; S14 PG. 232 DEC. P.C. COOL

2/31



WOODS



CLEAR CUT

T105 R7W	
CAP	
STAMPINGS	
	523 524
	526 525
	1991

BENTON COUNTY CORNER RESTORATION BOOK NO. 1

C.S. #

by Witnesses

Geo. Marks

Armstrong & Son

by W.C. Galloway C.S.

Sept. 29, 1942

Feb. 28, 1942 by

W.C. Galloway C.S.

V.M. Patterson

Chas. Schuster

1/4 Sec. Cor. bet. Secs. 22 and 27 T10-7

Set a concrete post 7'x7'x26" 1/2 way bet. section corners.

Cedar 18" in dia. bears S. 40° 06' E. 1.812

Fir 8" " " S. 87° 20' W. 3.335 chs. to cen. of straight part.

1/4 Sec. Cor. bet. Secs. 25 and 26 T10-7

Set a 1/2" galv. pipe 30" long from

Fir 40" in dia. (now 66") bears S. 28° W. 85.8 ft = 1.30 chs. to spike N.

" 7" " S. 52 1/2° E. 12.9' = .195 chs., blazed, not scribed

Corner to Secs. 23, 24, 25 & 26 T. 10-7

Set a 1/2" galv. pipe 30" long from

Fir 18" (now 66") in dia. bears N. 85° 40' E., N. 85° 51' E. 29' = 1.50 chs. to head of spike N.

" 40" (now 66") " " S. 75° 20' E., S. 78° 41' E. 47.52' = .72 " " " " N.

" 40" (now 66") " " S. 68° 30' W., S. 69° 50 1/2' W. 115' = 1.712 " " " " N.

" 10" (now 32") " " N. 80° W., N. 80° 57' W. 91.08' = 1.38 " " " " S.

as above



C.S. #316

by W.C. Galloway

Witnesses Mch. 2, 1944

Orvy Tandy

Martin Bennett

March 4, 1944

John Rickard

and Orvy Tandy

Martin Bennett

1/4 Sec. bet. Secs. 27 and 34, T11 S. R. 6 W.

Set a car axle

Oak 8" in dia. (now 22") bears N. 23° 20' E. 3.70 std. O.K.

" 10" " (" 27") " S. 28° 10' W. 3.87 " " "

Mkd. " 11" " " N. 88° W. 1.076 chs.

Corner to Secs. 26, 27, 34 & 35 T. 11 S. R. 6 W.

Set 1/2 of a buggy axle

Oak 24" in diameter bears N. 18° W. 8.37 chs. Std. found letters

" 15' " " N. 15° E. 6.20 " " good shape

Marked fir 3' " " N. 47 1/2° E. .145 "

" " 4' " " S. 38 1/2° W. .143 "

" " 4' " " S. 76 1/4° W. .501 "

" " 5' " " N. 12° W. .185 "

March 10, 1944

Witness as above

Orvy Tandy and

E.E. McCormick.

N.W. Corner of Geo. A. Wells D.L.C. # 46 T11-6

Set a 1/2 of a buggy axle 1 1/2" x 30" bet. 2 rocks

Oak 12" in dia. bears S. 61° E. 1.35 lying down checks.

" 12" " " S. 45° W. .63 chs. nearly dead "

Mkd. fir 14" " " S. 87 1/2° E. .144 "

" " 14" " " N. 57° W. .236 "

C.S. 316

Mch. 11, 1944

as above

S.W. Corner of Geo. A. Wells D.L.C. # 46 T11-6

Set a 3/4" pipe 4' long 32" up. Driven in root, set from

Oak 12" in dia. bears N. 7° 22' E. 1.73 std., green, found letters.

" 12" " " N. 79° 10' W. 2.48 Stub 6' std.

Mkd. fir 14' " " S. 77° E. .204 chs.

" forked fir 18' " " S. 83 1/2° W. .340 " cen. of bottom.

Corner to sections 23, 24, 25 and 26, Twp. 10-7
W.C. GALLOWAY*

2/28/1942

547

Set a $\frac{1}{2}$ " galvanized pipe 30" long

Fir 18" in diam bears N 85° 40' E	1.50 chains (spike-
Fir 40" in diam bears S 75° 20' E	.72 chains (spike-
Fir 40" in diam bears S 68° 30' W	1.712 chain (spike-
Fir 10" in diam bears N 80° W	1.38 chains (spike-

--- *_SEE OLD CORNER RESTORATION BOOK NO. 1 PAGE 232 (MEA 4/30/1992). ---

All stumps in June of 1952