

107640300

CORNER FILE TRACKING

S:\Survey Corners\CORNERS\Templates\Filetrac2.doc
10/04/2010

CORNER NUMBER

107640300

STEP	HISTORY()	RESTORATION()
Form Prepared, DB	2/28/1994	1/6/2011
Field Inspection, DB	1/5/11	1/5/11
Finish index (count unit)	1/5/11	1/5/11
Counter Index	1/5/11 ✓	1/5/11 —
GIS Index Form	YES - OLD	YES - OLD
Checked, DB	1/4/11	1/4/11
Form Edited, DB	1/5/11	1/5/11
Form Signed, DB	1/7/11	1/7/11
Authorize Payment, DB	—	—
Archive Digital Files	1/11/11	1/11/11
Collect Documents	1/11/11	1/11/11
PDF File	1/11/11	1/11/11
Copy For Filming	1/11/11	1/11/11
Scanned (pdf to laserfiche)	1/11/11	1/11/11
Filmed (Archived), DB		
Filed, DB		

(DB) = Entry needed in database (Access).

COMMENTS:

BENTON COUNTY CORNER RESTORATION FORM, PAGE 1 OF 2, 107640300R3
SEE CORNER HISTORY FORM FOR RECORDS ETC.

CORNER RESTORATION FIELD BOOK NUMBER 29 PAGE(S) 17 DATE 01/05/2011
TOWNSHIP 10 SOUTH, RANGE 7 WEST, WILLAMETTE MERIDIAN; SECTION 24 CORNER SOUTH 1/4
DONATION LAND CLAIM NONE CORNER NONE
CONDITION REPORT ; REFERENCED OUT ; RENEWED XX; SURVEYED IN

LOCATION AND COMMENTS:

CORNER IS LOCATED ON A CUT BANK ON THE WESTERLY SIDE OF A GRAVEL ROAD. TO REACH CORNER FROM THE JUNCTION OF HOSKINS AND ALEXANDER ROAD, TRAVEL WESTERLY ON HOSKINS ROAD FOR 1.45 MILES; THEN RIGHT ON SPUR ROAD FOR ±300 FEET TO CORNER. CORNER IS POOR FOR PREMARKING AND GPS CONTROL.

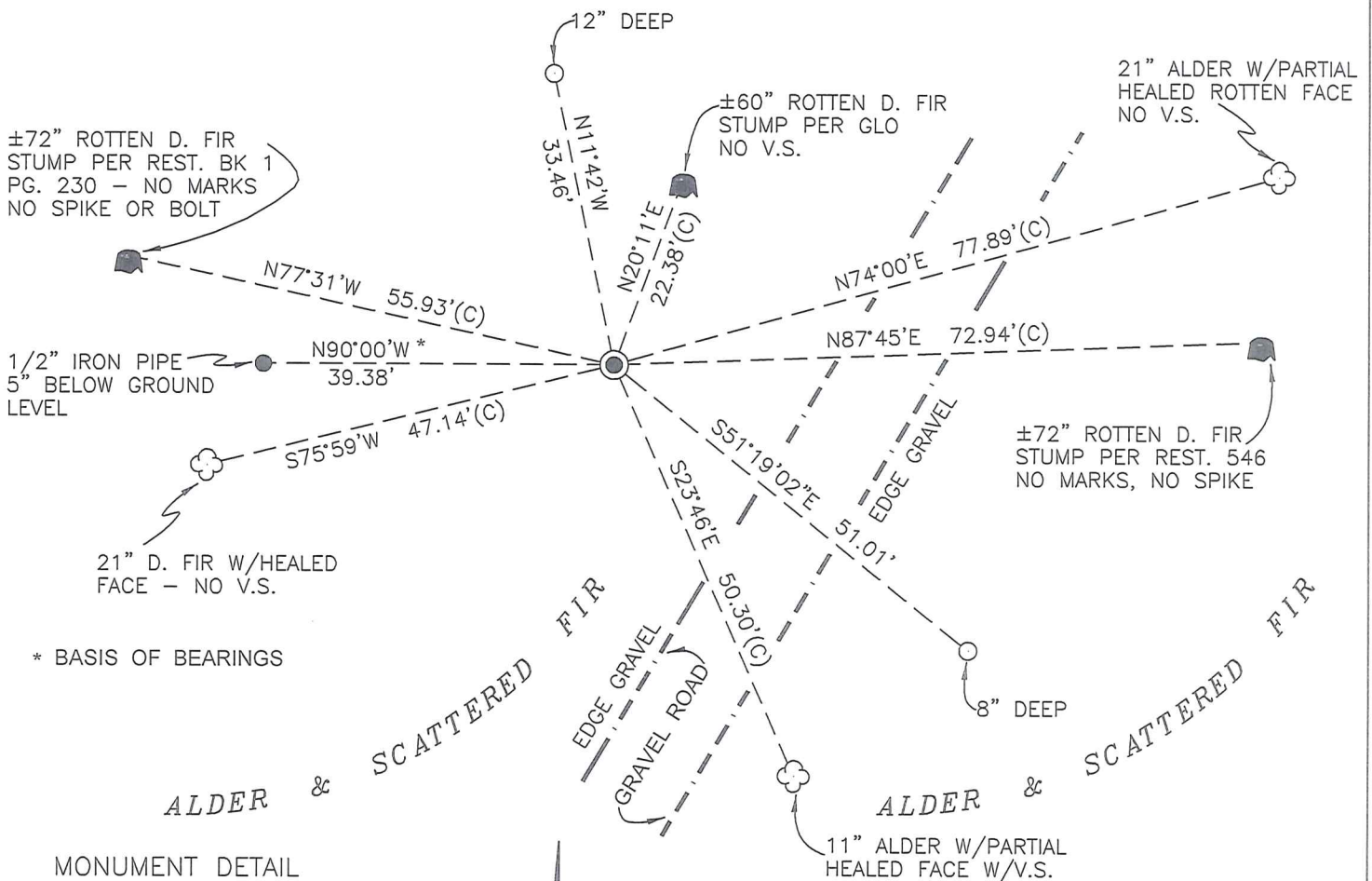
MONUMENTS AND ACCESSORIES FOUND (CONDITION AND SOURCE):

1. FOUND 3 1/4" BRASS DISK ON 2 1/2" OUTSIDE DIAMETER IRON PIPE, 2" BELOW GROUND LEVEL AND MARKED AS SHOWN ON PAGE 2 OF 2 FOR CORNER POSITION.
(SET 2" INSIDE DIAMETER X 36" IRON PIPE WITH A 3 1/4" BRASS CAP OVER 1/2" IRON PIPE PER RESTORATION 3872).
2. FOUND 1/2" IRON PIPE, N90°00'W, 39.38 FEET AND 5" BELOW GROUND LEVEL.
(FOUND 1/2" PIPE, N86°W, 39.25 FEET PER RESTORATION 3872).
3. FOUND ±72" ROTTEN D. FIR STUMP, N77°31'W, 55.93 FEET TO CENTER WITH NO MARKS, SPIKE OR BOLT.
(FOUND ROTTED FIR STUMP, ABOUT 72" DIAMETER, N76°W, 56.1 FEET WITH 5/8" X 19" BOLT LAYING UNATTACHED ALONG THE SOUTH SIDE OF THE STUMP PER RESTORATION 3872).
4. FOUND ±60" ROTTEN D. FIR STUMP, N20°11'E, 22.38 FEET TO CENTER WITH NO VISIBLE MARKS.
(FOUND ROTTED FIR STUMP ABOUT 60" DIAMETER, N19°E, 22.6 FEET PER RESTORATION 3872).
5. FOUND 21" ALDER, N74°00'E, 77.89 FEET TO CENTER WITH PARTIAL HEALED AND ROTTEN FACE. SET ALUMINUM NAIL AND PLASTIC WASHER IN NORTHWESTERLY BASE FOR DISTANCE MEASUREMENT.
(13" ALDER BEARS N75°E, 78.00 FEET, FACE SCRIBED "1/4S24BT". SET PK NAIL AND BRASS WASHER IN SOUTHEASTERLY BASE PER RESTORATION 3872).
6. FOUND ±72" ROTTEN D. FIR STUMP, N87°45'E, 72.94 FEET TO CENTER WITH NO MARKS OR SPIKE.
(FOUND ROTTED FIR STUMP ABOUT 72" DIAMETER, S87°E, 72.55 FEET TO BOAT SPIKE IN THE TOP CENTER PER RESTORATION 3872).
7. FOUND 11" ALDER, S23°46'E, 50.30 FEET TO CENTER WITH PARTIAL HEALED FACE AND VISIBLE SCRIBING. SET ALUMINUM NAIL AND PLASTIC WASHER IN EASTERLY BASE FOR DISTANCE MEASUREMENT.
(8" ALDER BEARS S21°E, 50.67 FEET, FACE SCRIBED "1/4S25BT". SET PK NAIL AND BRASS WASHER IN WESTERLY BASE PER RESTORATION 3872).
8. FOUND 21" D. FIR, S75°59'W, 47.14 FEET TO CENTER WITH HEALED FACE. SET ALUMINUM NAIL AND PLASTIC WASHER IN NORTHERLY BASE FOR DISTANCE MEASUREMENT.
(13" FIR BEARS S78°W, 46.90 FEET, FACE SCRIBED "1/4S25BT". SET PK NAIL AND BRASS WASHER IN NORTHERLY BASE PER RESTORATION 3872).

MONUMENT SET (PROCEDURES AND DESCRIPTION):

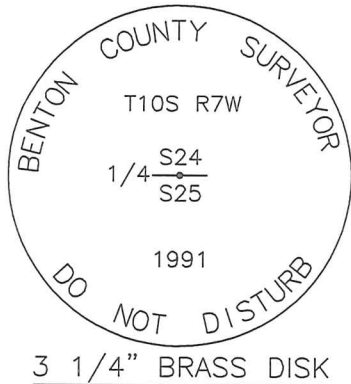
NO NEW MONUMENT WAS SET. HELD PIPE AND BRASS DISK SET IN RESTORATION 3872. LOCATED AND TIED ALL ACCESSORIES NOTED IN RESTORATION 3872 AND SET TWO NEW IRON REFERENCES AS SHOWN ON PAGE 2 OF 2. FOUND AN ORANGE CARSONITE POST 1 FOOT EAST OF CORNER MONUMENT AND PLACED A BENTON COUNTY "SURVEY MARKER" STICKER ON EASTERLY FACE.

ALDER & SCATTERED FIR



* BASIS OF BEARINGS

MONUMENT DETAIL



1"=20'
BEARINGS FROM
RESTORATION BK 1, PG 230

LEGEND

- SET 5/8" X 30" REBAR WITH YELLOW PLASTIC CAP MARKED "BENTON COUNTY SURVEYOR"
- FOUND MONUMENT AS NOTED.
- (F) MEASUREMENT TO FACE
- (C) MEASUREMENT TO CENTER
- GOVERNMENT MONUMENT FOUND AS SHOWN
- ☁ BEARING TREE AS NOTED
- C.S.B.T. COUNTY SURVEYORS BEARING TREE
- GLO GENERAL LAND OFFICE
- ♣ BEARING TREE STUMP AS NOTED

NEW ACCESSORIES:

1. SET REBAR (SEE LEGEND) N11°42'W, 33.46 FEET AND 12" BELOW GROUND LEVEL.
2. SET REBAR (SEE LEGEND) S51°19'02"E, 51.01 FEET AND 8" BELOW GROUND LEVEL.

NOTES:

COMPASS DECLINATION IS 20° EAST. ALL MEASURED DISTANCES AND BEARINGS ARE TO THE CENTER OF THE OBJECT, UNLESS OTHERWISE NOTED. ALL BEARING TREES ARE PAINTED AND HAVE A B.T. TAG ATTACHED, FACING THE CORNER UNLESS OTHERWISE NOTED. ALL NEW BEARING TREES HAVE A PLASTIC WASHER (STAMPED "SURVEYOR MARKER DO NOT REMOVE") ATTACHED BY AN ALUMINUM NAIL TO THE FACE, BELOW THE "BT" FOR DISTANCE AND ANGLE MEASUREMENT UNLESS OTHERWISE NOTED. THE DRAWING IS FROM AUTOCAD RELEASE 2008.

THIS RESTORATION WAS PERFORMED AT THE DIRECTION AND APPROVAL OF THE BENTON COUNTY SURVEYOR *[Signature]*

FIRM/AGENCY: BENTON COUNTY SURVEYOR'S OFFICE
 ADDRESS: 360 S.W. AVERY AVE. CORVALLIS, OR. 97333; PH. 766-6821
 PRESENT: DAVID M. DEAN, P.L.S. AND BERNIE ALTENBACH, SURVEY TECH.
 EQUIPMENT: NIKON NIVO 3.C W/SURVEY PRO ONBOARD

REGISTERED
PROFESSIONAL
LAND SURVEYOR

1/7/11 *David M. Dean*

OREGON
JULY 13, 1984
DAVID M. DEAN
2090

RENEWAL DATE: 12/31/11

**TOWNSHIP 10 SOUTH, RANGE 7 WEST, WILLAMETTE MERIDIAN; SECTION 24 CORNER S 1/4
DONATION LAND CLAIM _____ CORNER _____****COMMON CORNER(S):**

NORTH QUARTER CORNER OF SECTION 25.

UPDATES AND REVISIONS:**CORNER RECORDS (PREVIOUS RENEWALS, SURVEYS, ETC.)**

- [01] ORIGINAL GLO SURVEY BY DENNIS HATHORN DATED DECEMBER 5, 1856.
- [02] FIELD NOTES FOR COUNTY ROAD NO. 06540 (OLD COUNTY ROAD NO. 626 TOPOG.RT.54) BY W.C. GALLOWAY DATED FEBRUARY 1, 1941.
- [03] ROAD NOTES FOR COUNTY ROAD NO. 06540 (RT 54 A+B ALIGN., STA. 247+51.34 12.59'LT.) BY BENTON COUNTY SURVEYOR'S OFFICE DATED APRIL 5, 1941.
- [04] OLD CORNER RESTORATION BOOK NO. 1 PAGE 230 BY BENTON COUNTY SURVEYOR'S OFFICE DATED APRIL 5, 1941.
- [05] CORNER RESTORATION NO. 548 BY BENTON COUNTY SURVEYOR'S OFFICE DATED APRIL 5, 1941.
- [06] MAP OF COUNTY ROAD NO. 06540 BY W.C. GALLOWAY, DATED APRIL 1941.
- [07] MAP NO. 10-7-00013 BY W.C. GALLOWAY DATED DECEMBER 9, 1947.
- [08] MAP NO. 10-7-00020 BY W.C. GALLOWAY (NO DATE GIVEN).
- [09] COUNTY SURVEY NO. 2031 BY OTTO MEYER, DATED JULY 4, 1948.
- [10] COUNTY SURVEY NO. 2043 BY OTTO MEYER DATED AUGUST 22, 1948.
- [11] COUNTY SURVEY NO. 2071 BY CURTIS C. HANSON DATED DECEMBER 14, 1948.
- [12] CORNER RESTORATION NO. 548 BY R.W. FAIL DATED NOVEMBER OF 1957.
- [13] COUNTY SURVEY NO. 4374 BY OREGON STATE HIGHWAY DEPARTMENT DATED MARCH OF 1967.
- [14] CORNER RESTORATION NO. 3872 BY CURTIS J. LIESENFELT DATED JANUARY 14, 1991.

COMMENTS/LOCATION/ETC:

RECORD [05] IS TRANSCRIBED FROM RECORD [04] AND MAY CONTAIN ERRORS AND OMISSIONS.

NOTES:

THIS IS A MICROSOFT WORD (VERSION 5.0) DOCUMENT NAMED "07640300" CREATED FROM A BOILER PLATE DOCUMENT NAMED "HISTORY", WHICH HAS A STYLESHEET NAMED "CORNER" ATTACHED TO IT.

FIRM/AGENCY: BENTON COUNTY SURVEYOR'S OFFICE
ADDRESS: 360 S.W. AVERY AVE. CORVALLIS OR 97333; PH. 757-6821
RESEARCH BY: CURTIS J. LIESENFELT/MARK E. ANDERSON
DATA ENTRY BY: MARK E. ANDERSON

SECTION 24 TOWNSHIP 10 S RANGE 7 W DLC _____ CORNER S 1/4

DATE 1/14/91 CORNER RESTORATION FIELD BOOK NUMBER 2 PAGE 26

CORNER DESIGNATION:

THE QUARTER CORNER COMMON TO SECTIONS 24 AND 25,
IN T 10 S, R 7 W, WILLAMETTE MERIDIAN.



- _____ CONDITION REPORT ONLY
- _____ REFERENCED OUT
- XX RENEWED
- _____ SURVEYED IN

LOCATION AND COMMENTS:

THE CORNER IS LOCATED ON A CUT BANK ABOUT 25 FEET NORTHWESTERLY FROM THE PHYSICAL CENTER LINE OF AN UNNAMED GRAVEL ROAD. APPROXIMATELY 110 FEET SOUTHWESTERLY FROM THE SOUTHWEST EDGE OF BONNER LAKE, AND APPROXIMATELY 300 FEET NORTHERLY FROM THE CENTERLINE OF HOSKINS-SUMMIT ROAD (COUNTY ROAD NO. 06540).

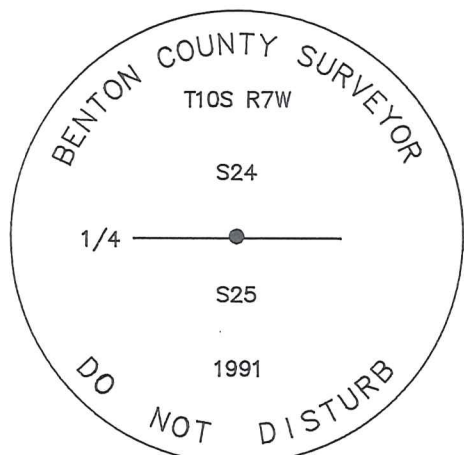
PREVIOUS RENEWALS/SURVEYS, ETC.:

- ORIGINAL GLO SURVEY BY DENNIS HATHORN IN 1856.
- CORNER RESTORATION NO. 548 BY W.C. GALLOWAY ON APRIL 5, 1941.
- COUNTY SURVEY NO. 2043 BY OTTO MEYER ON AUGUST 22, 1948.
- CORNER RESTORATION NO. 548 BY R.W. FAIL IN NOVEMBER OF 1957.
- COUNTY SURVEY NO. 4374 BY OREGON STATE HIGHWAY DEPARTMENT IN MAY OF 1965.

MONUMENTS AND ACCESSORIES FOUND (CONDITION AND SOURCE):

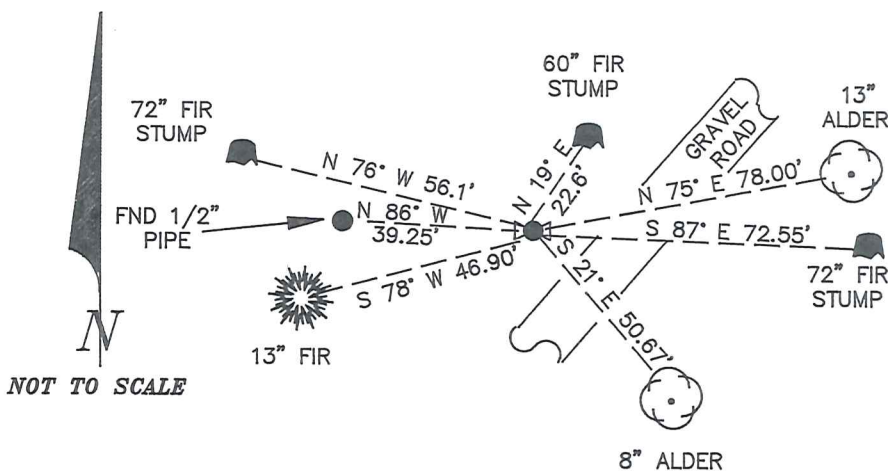
- FOUND: 1/2" INSIDE DIAMETER IRON PIPE FOR THE CORNER (CORNER RESTORATION NO. 548).
 - FOUND: 1/2" INSIDE DIAMETER IRON PIPE BEARS N 86° W 39.25 FEET (WEST 38.00 FEET CORNER RESTORATION NO. 548).
 - FOUND: A MOSTLY ROTTED FIR STUMP ABOUT 60" IN DIAMETER BEARS N 19° E 22.6 FEET (N 15° E 21.12 FEET ORIGINAL GLO FACE MEASUREMENT). SET A B.T. TAG ON THE SOUTHERLY FACE.
 - FOUND: A MOSTLY ROTTED FIR STUMP ABOUT 72" IN DIAMETER WITH A 2" X 2" HUB AND TACK ON TOP IN THE APPROXIMATE CENTER, BEARS N 76° W 56.1 FEET (N 81° 48' W 54.37 FEET TO A SPIKE AND 1/2" BOLT IN THE SOUTH SIDE OF THE STUMP CORNER RESTORATION NO. 548). FOUND A 5/8" X 19" BOLT (1/2" BOLT CORNER RESTORATION NO. 548) LAYING UNATTACHED ALONG THE SOUTH SIDE OF THE STUMP. SET A B.T. TAG ON THE EASTERLY FACE.
 - FOUND: A MOSTLY ROTTED FIR STUMP ABOUT 72" IN DIAMETER WITH A BOAT SPIKE IN THE TOP CENTER, BEARS S 87° E 72.55 FEET (EAST 74.00 FEET CORNER RESTORATION NO. 548). SET A B.T. TAG ON THE WESTERLY FACE.
- NO OTHER RECORD BEARING OBJECTS WERE RECOVERED.

MONUMENT DETAIL



3 1/4" BRASS CAP

SKETCH



MONUMENT SET (PROCEDURES AND DESCRIPTION):

SET: 2" INSIDE DIAMETER X 36" LONG IRON PIPE WITH A 3 1/4" BENTON COUNTY BRASS CAP STAMPED AS SHOWN CENTERED OVER THE RECOVERED 1/2" PIPE.

NEW ACCESSORIES:

- AN ALDER 13" IN DIAMETER BEARS N 75° E 78.00 FEET, FACED AND SCRIBED "1/4 S24 BT". SET A PK NAIL AND B.C.B.W. IN THE SOUTHERLY BASE. SET A B.T. TAG ON THE WESTERLY FACE.
 - AN ALDER 8" IN DIAMETER BEARS S 21° E 50.67 FEET, FACED AND SCRIBED "1/4 S25 BT". SET A PK NAIL AND B.C.B.W. IN THE WESTERLY BASE. SET A B.T. TAG ON THE NORTHERLY FACE.
 - A FIR 13" IN DIAMETER BEARS S 78° W 46.90 FEET, FACED AND SCRIBED "1/4 S25 BT". SET A PK NAIL AND B.C.B.W. IN THE NORTHERLY BASE. SET A B.T. TAG ON THE EASTERLY BASE.
- FOUND: ORANGE FIBERGLASS "SURVEY MARKER" POST 1 FOOT EASTERLY, THE POST WAS MARKED "1/4 CORNER BETWEEN SECTIONS 24/25".

NOTES:

B.C.B.W. IS A BRASS WASHER STAMPED "BENTON COUNTY SURVEYOR". COMPASS DECLINATION IS 20° EAST. ALL MEASURED DISTANCES AND COMPASS BEARINGS ARE TO THE CENTER OF THE OBJECT, UNLESS OTHERWISE NOTED.

FIRM/AGENCY: BENTON COUNTY PUBLIC WORKS
ADDRESS: 360 S.W. AVERY AVE. CORVALLIS OR. 97333; PH. 757-6821
PARTY CHIEF: CURTIS J. LIESENFELT
CREW: MARK E. ANDERSON
WITNESS:

REGISTERED
PROFESSIONAL
LAND SURVEYOR

Danna L. Fehrenbacher

OREGON
JULY 16, 1982
DANNA L. FEHRENBACHER
1995

C C.S. 337
 by W.C. Galloway
 A R.J. Stewart
 1/4 sec. cor. Between secs. 21 & 28 10-5 Sept. 1932
 Set a Ford Axle for corner from which
 A Fir 10" in dia. bears North .080' std.
 " " 8" " " " 5.72° E. 100' " dead
 Mark " 20" " " " N.65.40° E. 263'

E C.S. 337
 A Burt Wilkes
 C Adrian Seits
 1/4 sec. cor. Between secs. 16 & 21 10-5 June 29, 1941
 Set Yew Post 4"x4"x42" in edge old stump hole.
 Fir 48" in dia. Bears S.88 1/2° E. 13.86'
 North tree down Bearing & dist agree
 Mark o Fir. 11" in dia. bears N.33° W. 14.6'
 " Yew 4" " " " 5.73° W 38.0'

C.S. No. 158
 Burt Wilkes
 C Ray McBride
 1/4 sec. cor. Between secs 6 & 7 T. 15 S. R. 6 W Mar. 31 1941
 Set Yew Post 4"x4"x56" - 24" in ground - Original stake hole
 Cedar 18" in dia. bears S.58° W. 13.4' std
 " 18" " " " N. 65° W. 25.65' "

Same as above 1/4 sec. cor. between secs. 7 & 8 15-6 Mar. 26, 1941
 Set Stone 5"x6"x14" + on top set in slump hole of 5" Fir which was orig. cor. [Find Fir down with mks
 W.D.T. dead. E.D.T. Stump - cut. Bearings & dists OK. Some scribe as used on DT.
 Mark Fir. 16" in dia. bears N. 15° W. 9.83' to spike
 " Fir. 24" " " " 5.26° W. 9.30' to spike

Same as above
 1/4 sec. cor. between secs. 7 & 18 - 15-6 Mar. 28, 1941
 Set Stone 6"x10"x16" o 1/4" hole in top C.S. set orig sth. hole
 Both Cedar DTs. have been cut find scribe marks in slumps No
 trees available for marking. Logged off

C.S. # 158
 Burt Wilkes
 C Adrian Seits
 Cor to Sections 7, 8, 17 & 18 T. 15 S. R. 6 W. July 28, 1941
 Set 1/2"x54" Galv Pipe for corner - Original stake Hole.
 Cedar. "12" in dia. bears S.70°30' W. 35.54' standing All other Orig. trees gone.
 Mark Fir 15" " " " N. 14° W. 31.68'
 " " 14" " " " S. 19 1/2° E. 33.95'
 " " 16" " " " S. 7 1/2° W 41.3'

C.S. Road 626
 1/4 Sec. between secs. 24 and 25 T. 10 S. R. 7 W. Apr. 5, 1941.
 Set a 1/2" galv pipe From a fir 36" in dia. bears N. 15° E. 32 std. letters on bark
 Original corner " " 9" " " " S. 60° W. 1.24 lying on ground.
 We drove a spike in s. of a 70" fir which bears N. 81° 48' W. 54.37 feet
 " " " " SW. of a 27" " " " East 44.62 "
 " " " 1/2" pipe West 38.00 "
 " " " spike in S.E. of a 24" " " S. 44° 32' W. 45.3 "
 Center of a fir 24" in dia. bears S 46° 20' W. 45.3 "
 Station 247+73.69 " N. 53° 56' E. 25.65 "
 Tangent of road is N. 24° 32' E.



Reestablishment by W. C. Galloway

April 5, 1941

Set a 1/2" galvanized pipe from a fir 36" in diam bears N 15°E .32chains
Original corner -----Fir 9" in diam bears S 60° W 1.24 chains

Drove spike in following:

Fir 70" in diam bears N 81° 48' W	54.37 feet
Fir 27" in diam bears East	44.62 feet
1/2" pipe bears West	38.00 feet
Fir 24" in diam bears S 44° 32' W	45.3 feet
Fir 24" in diam bears S 46° 20' W	45.3 feet
Station 247 + 73.69 bears N 53° 56' E	25.65 feet
Tangent of road is N 24°32' E	

Reestablishment by R. W. Fail

November, 1957

Set 1/2" pipe
1/2" bolt in place of spike in

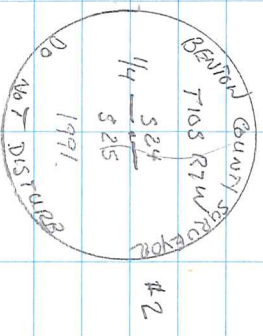
Fir stump 70"	N 81° 48' W	54.37 feet
spike in Fir stump 42"	East	74.00 feet
Found 1/2" pipe	West	38.00 feet

All other BT's gone

107640300

PERPETUATING & REFERENCES
1/4 24 T10S, R.7.W

LAND AROUND CORNER TO BE
LOGGED IN NEAR FUTURE,
LOCATED MONUMENT (3 1/4" BRASS DISK
ON G.I.P.) SET PER RESTORATION/
NO. 3872 IN JAN. 1991. MON.
WAS RECOVERED IN GOOD CONDITION
AND UNDISTURBED. ALL CORNER
ACCESSORIES PER REST NO. 3872
WERE RECOVERED AND 2 NEW
IRON ROD REFERENCES WERE SET
TO PERPETUATE THE SUBJECT COR.
FD ORANGE CARBONITE "SURVEY MARKER"
PART 1' E of COR. MON. PLACED NEW
"SURVEY MARKER" STRICKER ON S'ly FACE.



3 1/4" BRASS DISK

COOL, LT. RAIN
34°F, 29.9"Hg
NIKON NIVD 3.C
TDS ON BOARD

1/5/11
D. DEAN
B. ALTENBACH
29/17

ALDER & SCATTERED FIR

