

Std. $\frac{1}{4}$ -Section corner on north line of section 5, Twp. 11 S., R. 3 W. 800

Reestablishment by W. C. Galloway

October 9, 1919

Set **double** barrel shotgun barrel from Fir 8" in diam bearing S 78°W .18 chs.
Maple 15" in diam bears N 38° E .203 chains
W. Fir 8" in diam bears S 78° W .18 chains

Witnesses W. H. Worrell and William Phillips

CORNER HISTORY		T 11 S, R 3 W		SECTION 5 D.L.C.		CORNER N 14 CORNER		# 240700
NO.	DATE	SOURCE	SURVEYOR	MONUMENTS AND ACCESSORIES			COMMENTS	
①	6/30/1852	ORIG. G.L.O.	GEORGE W. HYDE	SET POST @ 2 FIR B.T.'S				1
②	5/9/1857	CS # 46	L.A. DAVIS	MEANDER POST				2
③	10/9/1919	CS # 670	W.C. GALLOWAY	FMO. SW B.T. SET DBL. DBL. SHOTGUN, 1 NEW MAPLE			FB 27/15	③
④	10/11/1919	OLD COR. REST. BL. #1 PL. 141	" "	" " " " " SHOTGUN DBL. " " "				4 5
⑤	10/9/1919	REST. 600	" "	" " " " " " " " " " " "			TRANS. COPY OF	6 7
⑥	10/16/1919	MAP NO. 10-3-00065	" "	" " " " " " " " " " " "				8 9
⑦	4/26/1978	CS # 628	JOHN HOLLINGSWORTH	FMO. SHOTGUN DBL. DBL.				10 11
								12
								13
								14
								15
								16
								17
								18
								19
								20
								21
								22
								23
								24
								25
								26
								27
								28
								29
								30
								31

141
600

TOWNSHIP 11 SOUTH, RANGE 3 WEST, WILLAMETTE MERIDIAN; SECTION 05 CORNER N 1/4
DONATION LAND CLAIM _____ CORNER _____

COMMON CORNER(S):

UPDATES AND REVISIONS:

CORNER RECORDS (PREVIOUS RENEWALS, SURVEYS, ETC.)

- [01] ORIGINAL GLO SURVEY BY GEORGE W. HYDE DATED JUNE 30, 1852.
- [02] COUNTY SURVEY NO. 46 BY L.A. DAVIS DATED MAY 9, 1857.
- [03] COUNTY SURVEY NO. 670 BY W.C. GALLOWAY DATED OCTOBER 9, 1919 (FIELD BOOK 27 PAGE 15).
- [04] OLD CORNER RESTORATION BOOK NO. 1 PAGE 141 BY W.C. GALLOWAY DATED OCTOBER 6-11, 1919.
- [05] CORNER RESTORATION NO. 600 BY W.C. GALLOWAY DATED OCTOBER 9, 1919.
- [06] MAP NO. 10-3-00005 BY W.C. GALLOWAY DATED OCTOBER 16, 1919.
- [07] COUNTY SURVEY NO. 6628 BY JOHN HOLLINGSWORTH DATED APRIL 26, 1978.

COMMENTS/LOCATION/ETC:

RECORD [05] IS A TRANSCRIBED COPY OF RECORD [04] AND MAY CONTAIN ERRORS AND OMISSIONS.

NOTES:

THIS IS A MICROSOFT WORD (VERSION 5.0) DOCUMENT NAMED "13240700" CREATED FROM A BOILER PLATE DOCUMENT NAMED "HISTORY", WHICH HAS A STYLESHEET NAMED "CORNER" ATTACHED TO IT.

FIRM/AGENCY: BENTON COUNTY SURVEYOR'S OFFICE
ADDRESS: 360 S.W. AVERY AVE. CORVALLIS OR 97333; PH. 757-6821
RESEARCH BY: CURTIS J. LIESENFELT/MARK E. ANDERSON
DATA ENTRY BY: COLETTE MONACO

BENTON COUNTY CORNER RESTORATION FORM, PAGE 1 OF 1, 113240700R2

SEE CORNER HISTORY FORM FOR RECORDS ETC.

CORNER RESTORATION FIELD BOOK NUMBER 14 PAGE(S) 77 DATE 12/14/1993

TOWNSHIP 11 SOUTH, RANGE 3 WEST, WILLAMETTE MERIDIAN; SECTION 05 CORNER N 1/4

DONATION LAND CLAIM _____ CORNER _____

CONDITION REPORT _____; REFERENCED OUT _____; RENEWED XX; SURVEYED IN _____

LOCATION AND COMMENTS:

THE CORNER IS LOCATED IN A WOODED AND BRUSHY AREA, ON A GENTLE SOUTHEASTERLY FACING SLOPE APPROXIMATELY 335 FEET SOUTHERLY FROM THE NORTHWEST CORNER OF A LARGE BLACK BERRY PATCH AND APPROXIMATELY 150 FEET EASTERLY FROM A MINT FIELD. IT IS UNSUITABLE FOR PREMARKING AND G.P.S. CONTROL.

MONUMENTS AND ACCESSORIES FOUND (CONDITION AND SOURCE):

FOUND: DOUBLE BARREL SHOTGUN BARREL, 32" LONG FOR THE CORNER, 2" BELOW GROUND SURFACE (DOUBLE BARREL SHOTGUN AS PER RECORD [03]).

FOUND: 1 1/4" ALUMINUM CAP MARKED "OREGON STATE PARKS", BEARS N 8° 51' 00" E 333.23 FEET (N 7° 49' 56" E 332.25 FEET AS COMPUTED FROM RECORD [07]). SAID CAP IS 1.5 FEET NORTHWESTERLY FROM "OREGON STATE PARK BOUNDARY DO NO DISTURB" SIGN.

NO OTHER RECORD EVIDENCE WAS RECOVERED.

MONUMENT SET (PROCEDURES AND DESCRIPTION):

SET: 2" INSIDE DIAMETER X 36" LONG IRON PIPE WITH A 3 1/4" BENTON COUNTY BRASS CAP, STAMPED AS SHOWN, IN THE SAME COORDINATE POSITION AS THE RECOVERED SHOTGUN BARREL. PLACED SAID BARREL IN THE BASE OF THE NEW PIPE.

NEW ACCESSORIES:

SET: REBAR (SEE NOTES), 4" BELOW GROUND SURFACE, BEARS S 85° 19' W 37.88 FEET.

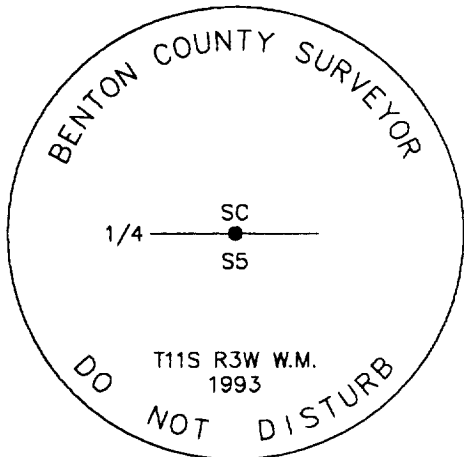
SET: REBAR (SEE NOTES), 4" BELOW GROUND SURFACE, BEARS N 11° 29' E 28.98 FEET.

SET: REBAR (SEE NOTES), 4" BELOW GROUND SURFACE, BEARS S 67° 50' E 43.05 FEET.

THE NORTHERLY 10" TRUNK OF A TWIN ASH, BEARS S 43° 53' E 23.02 FEET. BARK SCRIBED "1/4 S5 BT". SET 5 1/2" SPIKE AND BRASS WASHER IN THE NORTHEASTERLY BASE.

SET: ORANGE FIBERGLASS "SURVEY MARKER" POST 1 FOOT SOUTHERLY.

MONUMENT DETAIL

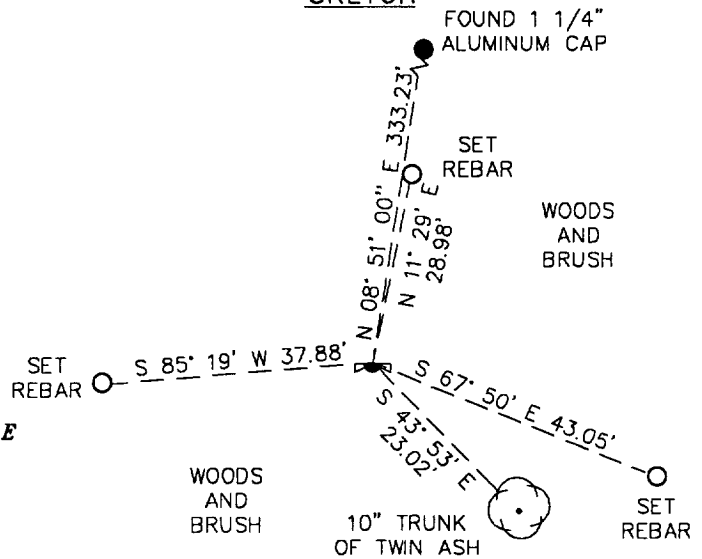


3 1/4" BRASS CAP



NOT TO SCALE

SKETCH



NOTES:

COMPASS DECLINATION IS 20° EAST. ALL MEASURED DISTANCES AND COMPASS BEARINGS ARE TO THE CENTER OF THE OBJECT, UNLESS OTHERWISE NOTED. ALL BEARING TREES ARE PAINTED AND HAVE A B.T. TAG ATTACHED, FACING THE CORNER UNLESS OTHERWISE NOTED. ALL BEARING TREES HAVE A BRASS WASHER (STAMPED "BENTON COUNTY SURVEYOR") ATTACHED TO A SIDE CENTER UNLESS OTHERWISE NOTED. ALL LIVE BEARING TREES HAVE A PLASTIC WASHER (STAMPED "BENTON COUNTY SURVEYOR CORNER RESTORATION") ATTACHED TO THE BACK OF THE TREE OPPOSITE THE CORNER UNLESS OTHERWISE NOTED. ALL SET REBAR ARE 5/8" X 30" AND HAVE A YELLOW PLASTIC CAP (STAMPED "BENTON COUNTY SURVEYOR") ATTACHED TO THE TOP.

THIS DOCUMENT WAS NAMED AND CREATED IN A MANNER SIMILAR TO THE HISTORY FORM. THE NAME OF THE BOILER PLATE IS "MONUMENT". THE BORDER, STAMP AND SKETCH ARE FROM AUTOCAD RELEASE 12.

THIS RESTORATION WAS PERFORMED AT THE DIRECTION AND APPROVAL OF THE BENTON COUNTY/DEPUTY COUNTY SURVEYOR. DB

FIRM/AGENCY: BENTON COUNTY SURVEYOR'S OFFICE
ADDRESS: 360 S.W. AVERY AVE. CORVALLIS OR 97333; PH. 757-6821
SURVEYOR: CURTIS J. LIESENFELT
SURVEY CREW: MARK E. ANDERSON

REGISTERED
PROFESSIONAL
LAND SURVEYOR

Curtis J. Liesenfelt

OREGON
JULY 17, 1986
CURTIS J. LIESENFELT
2213

LICENSE RENEWAL 12/31/1994