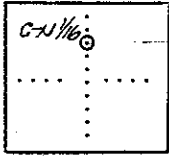


BENTON COUNTY SURVEYORS OFFICE - CORNER RESTORATION

3402

11 S, R 4 W, W. B. & M., BENTON COUNTY, OREGON
SECTION 2

REPORTED BY K & D Engineering, Inc.
TITLE LS 1238
DATE August 26, 1986



● OFFICIAL CORNER FOUND
○ CORNER SET

LEGIBLE MARKS ON BEARING OBJECTS

KIND	SIZE	BEARING	DISTANCE	BT TAG POSTED

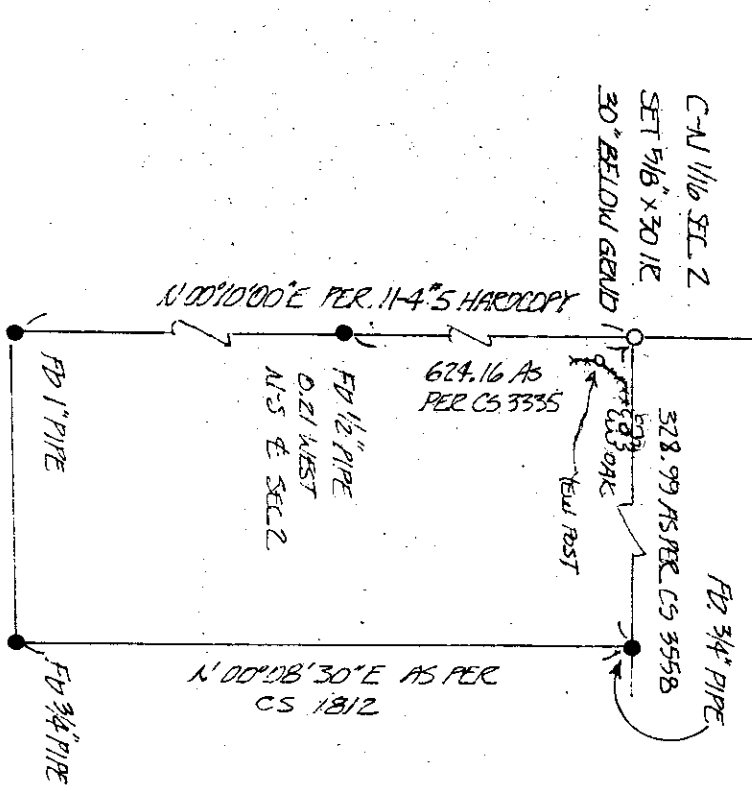
CORNER COMMON TO SEC. _____ & _____
IS _____
DESCRIBE _____

ADDITIONAL INFORMATION

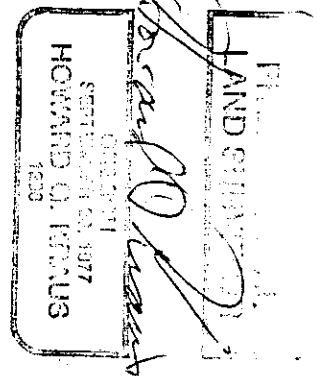
The bolt at the C-N 1/16 S 2 had been destroyed by gas line trench. Ties to local control to the East and South, plus bearing objects were used to re-establish this corner. The bearing between the new C-N 1/16 & the 1" pipe 39.93 ft. N 00°10'00" E on the N-S C Sec. 2 from the C 1/4 matches record 11-4 #5 hard copy.

SEE CS. 7920

OVER



14" OAK S 70° E 0.463 - 30.56 FT.
10" YELD POST S 5 1/4° E 0.305 - 20.13 FT.



N.T.S.