

S. E. corner of Archimedes Stewart Cl 51, Twp. 11-4

669

Reestablishment by W. C. Galloway

March 8, 1911

Set a stone 6" x 6" x 18"
Witness J. A. Ganong

December 16, 1976

670

S.E. Corner A. Stewart D.L.C. No. 51

Sec. 30, T. 11 S. R. 4 W., W.M., Benton County

Fd. 6" X 8" X 14" stone - fd. underground near driving range.

Set 5/8" X 30" Iron Rod and steel post with paddle marked "D.L.C."

Reestablished by Oregon State Highway Division

February 2, 1984

3211

Pulled 5/8" x 30" iron rod w/OSHD alum. cap, as per instructions from Pete Fidler,
Oregon State Highway Division.

#850010

153
669
470
327
3443

CORNER HISTORY		T 11 S, R 4 W		SECTION 30 D.L.C. JOHN STEWART, NO. 50		CORNER CORNER NE	
NO.	DATE	SOURCE	SURVEYOR	MONUMENTS AND ACCESSORIES		COMMENTS	
1	8/27/1861	ORIG. GLO	DENNIS HATHORN	SET POST @ 3 BT'S			1
2	3/8/1911	CS # 224	J. A. GANDON	SET OAK STK AND/OR STONE		FB 7/57	2 3
3	"	GLO COR. REST. BK. NO. 1, PG. 153	" "	SET STONE 6" x 6" x 18"			4 5 6
4	"	REST. # 669	W. C. GALLOWAY	TRANS. FROM REC + CONTAINS E +/OR O.			7 8
5	7/14/1911	WILLAMETTE DALE FARM SUB.	J. A. GANDON	PLANTED A STONE 18" x 8" x 6" # 865			9 10
6	NONE GIVEN	MAP NO. 11-5-00016	BENTON COUNTY	STONE 14" x 8" x 2"			11 12
7	6/26/1919	MAP NO. 11-4-00017	W. C. GALLOWAY	STONE 6" x 7" x 18"			13 14
8	8/1/1940	CS # 1485	" "	NO MON. DESC. FND 1" PIPE N10°41'37"W - 535.72'		FB 53/67.60	15 16
9	NONE GIVEN	MAP NO. 11-4-00019	BENTON COUNTY	HIGH PT. ON SE COR OF 6" x 7" x 18" STONE			17 18
10	"	MAP NO. 11-5-00015	" "	NO MON. DESC.			19 20
11	8/25/1965	CS # 4221	DONALD CRONEMILLER	" " "			21 22
12	5/17/1974	CS # 5726	FRED LEMKE	" " "			23 24
13	9/10/1974	CS # 5752	NICK YINGER	FND. 6" x 8" x 14" STONE TIED TO HWY 20			25
14	12/1976	MAP 6B-26-15	O. S. H. D.	FND. 8" x 6" x 14" STONE			26
15	NONE GIVEN	CS # 8700	C. O. FREDRICKSON / OSHO	FND. 8" x 6" x 14" STONE			27 28
16	12/16/1976	REST. 670.	O. S. H. D.	FND. 1" x 8" x 14" STONE SET 5/8" IR			29
17	1/27/1984	MAP 6B-26-15	"	" 8" x 6" x 14" "			30
18	2/2/1984	REST. 3211	PETE FIDLER / O.S.H.D.	PULLED 5/8" IR @ AL CAP			31
19	7/1986	CS # 7906	PETE FIDLER / O.S.H.D.	FND. STONE 8" x 6" x 14"			

OREGON CORNER RESTORATION FORM

DLC Section 51 Township 11 Range 4

County BENTON Date 2/25/1987

CORNER DESIGNATION

DLC 51		DLC 49	SOUTHEAST CORNER
DLC 50			A. STEWART

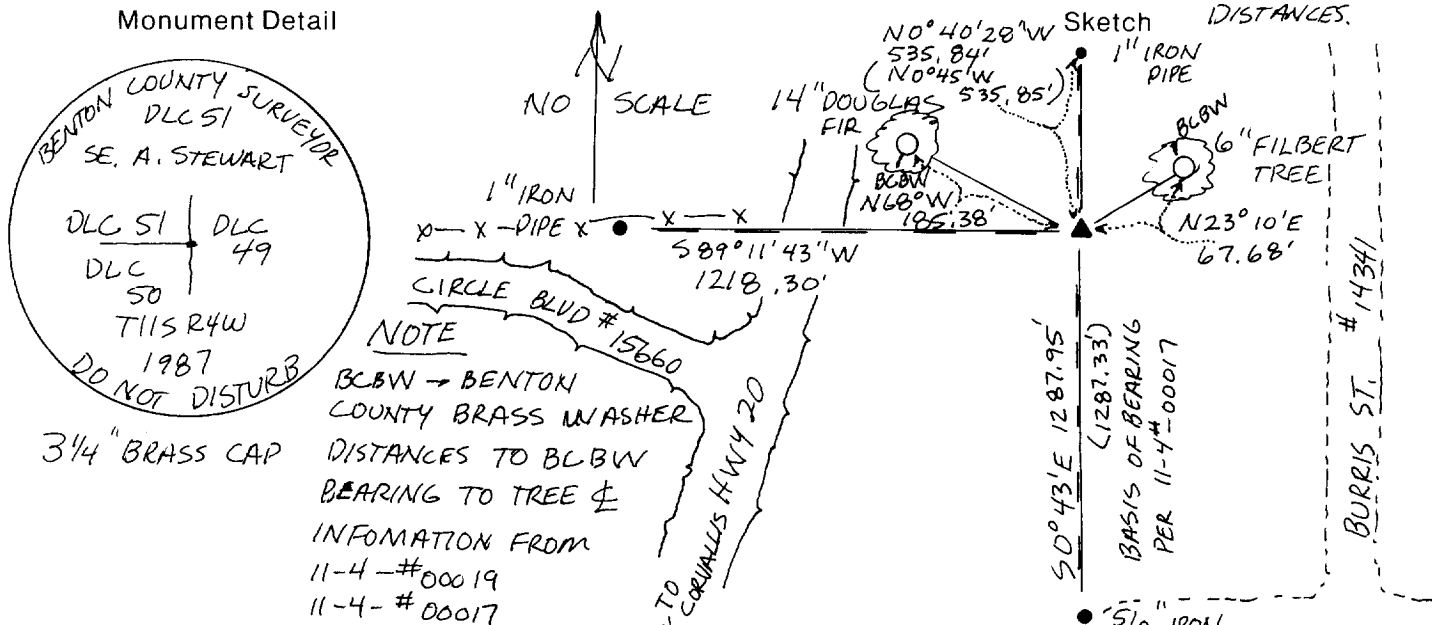
Condition Report Only
 Not Found
 Renewed
 Unrecorded
 Surveyed In
 Referenced Out

Previous Renewals/Surveys, etc. CORNER REST. No's 669 3/8/1911 670 12/16/1976
3211 2/2/1984, 11-4-#00019, 11-4-#00017

Monument(s) & Accessories Found: (Condition and Source)

FOUND A 6"X7"X16" STONE LEANING AT A 45° ANGLE. STRAIGHTENED CORNER AND USED HIGH POINT OF STONE CALLED FOR IN 11-4-#00019 STONE WAS TIED TO EXISTING MONUMENTS AND HIGH POINT OF STONE WAS ACCEPTED. NO HIGH POINT WAS FOUND WHEN STONE WAS AT 45° ANGLE, BUT WHEN STONE WAS STRAIGHTENED THE HIGH POINT CALLED FOR IN 11-4-#00019 WAS FOUND. STRAIGHTENED CHECKED BEST WITH RECORD

Monument Detail



Monument Set (Procedures and Description)

SET A 2 1/2" X 36" TELSPAR TUBE (SQUARE) 6" ABOVE SURFACE WITH A 3/4" BRASS CAP

New Accessories 1) FOUND A 5/8" IRON ROD BEARING S 0° 43' E 1287.95'
SAID POINT BEING THE SW COR DLC 49.

2) FOUND A 1" INSIDE DIAMETER IRON PIPE BEARING N 0° 40' 28" W
535.84'

3) FOUND A 1" INSIDE DIAMETER IRON PIPE BEARING S 89° 11' 43" W 1218.30'

4) 14" DOUGLAS-FIR BEARS N 68° W 185.38' NO BLAZE (AS IN A GOLF COURSE) BCBW
NAILED TO SOUTH BASE. 5) A 6" FILBERT TREE BEARS N 23° 10' E

DATE 06-06-96TOWNSHIP 11 SOUTH, RANGE 4 WEST, WILLAMETTE MERIDIAN; SECTION 30 CORNER _____
DONATION LAND CLAIM JOHN STEWART NO. 50 _____ CORNER NE**COMMON CORNER(S):**THE SOUTHEAST CORNER OF THE ARCHIMEDES STEWART DLC NO. 51.
THE WEST LINE OF THE JAMES H. STEWART DLC NO. 49.**UPDATES AND REVISIONS:****CORNER RECORDS (PREVIOUS RENEWALS, SURVEYS, ETC.)**

- [01] ORIGINAL GLO SURVEY BY DENNIS HATHORN DATED AUGUST 27, 1861. *SET POST WITH 3 BEARING TREES, MEASURED BEARING TREES TO THE FACE.*
- [02] COUNTY SURVEY NO. 224 BY J.A. GANONG DATED MARCH 8, 1911, (FIELD BOOK NO. 7, PAGE 57). *SET OAK STAKE AND/OR STONE.*
- [03] OLD CORNER RESTORATION BOOK NO. 1, PAGE 153 BY J.A. GANONG DATED MARCH 8, 1911. *SET STONE 6" X 6" X 18".*
- [04] CORNER RESTORATION NO. 669. *TRANSCRIBED COPY OF RECORD [03] AND MAY CONTAIN ERRORS AND OMISSIONS. .*
- [05] WILLAMETTEDALE FARM SUBDIVISION. BY J.A. GANONG DATED JULY 14, 1911. *PLANTED A STONE 18" X 8" X 6", 6" BELOW GROUND SURFACE.*
- [06] MAP NO. 11-5-00016 BY BENTON COUNTY (NO DATE GIVEN). *STONE 14" X 8" X 2".*
- [07] MAP NO. 11-4-00017 BY W.C. GALLOWAY DATED JUNE 26, 1919. *STONE 6" X 7" X 18".*
- [08] COUNTY SURVEY NO. 1485 BY W.C. GALLOWAY DATED AUGUST 1, 1940, (FIELD BOOK NO. 53, PAGES 67-68.
- [09] MAP NO. 11-4-00019 BY BENTON COUNTY (NO DATE GIVEN). *HIGH POINT ON SE CORNER OF 6" X 7" X 18" STONE.*
- [10] MAP NO. 11-5-00015 BY BENTON COUNTY (NO DATE GIVEN). *NO MONUMENT DESCRIPTION.*
- [11] COUNTY SURVEY NO. 4221 BY DONALD CRONEMILLER DATED AUGUST 25, 1965. *NO MONUMENT DESCRIPTION.*
- [12] COUNTY SURVEY NO. 5726 BY FRED LEMKE DATED MAY 17, 1974. *NO MONUMENT DESCRIPTION.*
- [13] COUNTY SURVEY NO. 5752 BY NICK YINGER DATED SEPTEMBER 10, 1974. *FOUND 6" X 8" X 14" STONE, TIED TO HIGHWAY 20.*
- [14] MAP 6B-26-15 BY O.S.H.D. DATED DECEMBER 1976. *FOUND 8" X 6" X 14" STONE.*
- [15] COUNTY SURVEY NO. 6700 BY C.O. FREDRICKSON/OSHD (NO DATE GIVEN). *FOUND 8" X 6" X 14" STONE.*
- [16] CORNER RESTORATION NO. 670 BY O.S.H.D. DATED DECEMBER 16, 1976. *FOUND 6" X 8" X 14" STONE, SET 5/8" IR.*
- [17] MAP NO. 6B-26-15 BY O.S.H.D. DATED JANUARY 27, 1984. *FOUND 8" X 6" X 14" STONE.*
- [18] CORNER RESTORATION NO. 3211 BY PETE FIDLER/O.S.H.D. DATED FEBRUARY 2, 1984. *PULLED 5/8" IR WITH ALUMINUM CAP.*
- [19] COUNTY SURVEY NO. 7906 BY PETE FIDLER/O.S.H.D. DATED JULY 1986. *FOUND STONE 8" X 6" X 14".*
- [20] CORNER RESTORATION FIELD BOOK NUMBER 1, PAGE 3 BY BENTON COUNTY DATED FEBRUARY 25, 1987. *FOUND 6" X 7" X 16" STONE WITH 3 BEARING OBJECTS, SET BRASS CAP WITH 2 BEARING TREES. BEARING TO THE WESTERLY WAS MISCALCULATED.*
- [21] CORNER RESTORATION NO. 3443 BY DANNA INGRAM FEHRENBACHER DATED FEBRUARY 25, 1987. *FOUND 6" X 7" X 16" STONE WITH 3 BEARING OBJECTS, SET BRASS CAP WITH 2 BEARING TREES. BEARING OBJECTS TO THE NORTH AND WEST HAVE MISSING OR INCORRECT INFORMATION.*
- [22] COUNTY SURVEY NO. 8277 BY DANNA INGRAM FEHRENBACHER DATED APRIL 1, 1989. *FOUND BRASS CAP, ESTABLISHED GEODETIC VALUES.*

COMMENTS/LOCATION/ETC:**NOTES:**

THIS IS A MICROSOFT WORD (VERSION 5.0) DOCUMENT NAMED "14850010" CREATED FROM A BOILER PLATE DOCUMENT NAMED "HISTORY". WHICH HAS A STYLESHEET NAMED "CORNER" ATTACHED TO IT.