

115100440

CORNER FILE TRACKING

S:\Survey Corners\CORNERS\Templates\Filetrac2.doc
10/04/2010

CORNER NUMBER
115100440

STEP	HISTORY	RESTORATION
Form Prepared, DB	01/13/2015	2/23/18
Field Inspection, DB	2/8/18	2/8/18
Finish index (count unit)	01/13/2015	2/8/18
Counter Index	2/9/18	2/9/18
GIS Index Form	2/9/18	2/9/18
Checked, DB	2/23/18	2/23/18
Form Edited, DB	2/23/18	2/23/18
Form Signed, DB	2/23/18	2/23/18
Authorize Payment, DB	—	—
Archive Digital Files	2/23/18	2/23/18
Collect Documents	2/23/18	2/23/18
PDF File	2/26/18	2/26/18
Copy For Filming	2/23/18	2/23/18
Scanned (pdf to laserfiche)	2/26/18	2/26/18
Filmed (Archived), DB		
Filed, DB		

(DB) = Entry needed in database (Access).

COMMENTS:

BENTON COUNTY CORNER HISTORY FORM, PAGE 1 OF 1,

115100440H

DATE 01/13/2015

TOWNSHIP 11 SOUTH, RANGE 5 WEST, WILLAMETTE MERIDIAN; SECTION 18 CORNER WEST 1/4
DONATION LAND CLAIM N/A CORNER N/A

COMMON CORNER(S):

EAST 1/4 CORNER SECTION 13 OF TOWNSHIP 11 SOUTH, RANGE 6 WEST

RECORDS (INFORMATION IN BOLD /ITALICS IS COUNTY STAFFS' INTERPRETATION OF THE RECORD)

BASED ON EXTENSIVE RESEARCH AND RECOVERY OF EVIDENCE, THIS OFFICE HAS DETERMINED THAT MOST GENERAL LAND OFFICE SURVEYORS IN BENTON COUNTY MEASURED TO THE FACE OF BEARING TREES.

[01] GENERAL LAND OFFICE (GLO) NOTES BY G. W. HYDE, D.S., DATED MAY 25, 1852. SET POST, DROVE CHARRED STAKE, MADE MOUND WITH TRENCH AS PER INSTRUCTIONS.

[02] BENTON COUNTY SURVEY NO. 1187 (OLD NO. 255) FIELD NOTES (FIELD BOOK 54, PAGE 22) BY WALTER W. LARSEN, D.C.S., DATED JULY, 1932. POSITION SURVEYED AND CALCULATED BY PROPORTION, BUT CORNER NOT DESCRIBED.

[03] BENTON COUNTY CORNER RESTORATION FORM NO. 3774 BY THEODORE JAMES LANGTON, P.L.S., DATED JUNE 15, 1989. SET 3" BENTON COUNTY BRASS CAP MARKED "T11S R6W 1/4 R5W S13 S18 PLS 1823 1989" BY SINGLE PROPORTION BETWEEN FOUND SECTION CORNERS ONE HALF MILE NORTH AND SOUTH. D. FIR 17" DIA BEARS S78°W, 19.4 FEET SCRIBED "1/4 S13 BT" ON A DOUBLE FACE; SCRUB OAK 8" DIA BEARS S32°E, 35.2 FEET SCRIBED "BT". A WHITE PVC PIPE WAS PLACED NORTH 1.0 FEET.

[04] BENTON COUNTY SURVEY NO. 8420 BY THEODORE JAMES LANGTON, P.L.S., DATED APRIL 1, 1990. SET 3" BRASS CAP MARKED "T11S R6W 1/4 R5W S13 S18 PLS 1823 1989" ON 2" X 36" IRON PIPE PER BENTON COUNTY CORNER RESTORATION 3774. D. FIR 17" DIA BEARS S78°W, 19.40 FEET SCRIBED "1/4 S13" ABOVE "BT"; OAK 8" DIA BEARS S32°E, 35.20 FEET SCRIBED "BT".

[05] BENTON COUNTY SURVEY NO. 8984 BY THEODORE JAMES LANGTON, P.L.S., DATED JUNE 19, 1995. 3" BENTON COUNTY BRASS CAP ON A 2" PIPE.

FIRM/AGENCY: BENTON COUNTY SURVEYOR'S OFFICE
ADDRESS: 360 S.W. AVERY AVE., CORVALLIS, OR 97333; PH. 541-766-6821
RESEARCH BY: DAVID L. MALONE, P.L.S.
DATA ENTRY BY: SAME

**BENTON COUNTY CORNER RESTORATION FORM, PAGE 1 OF 2, 115100440R1
SEE CORNER HISTORY FORM FOR RECORDS ETC.**

CORNER RESTORATION FIELD BOOK NUMBER 31 PAGE(S) 56 DATE 02/08/2018
TOWNSHIP 11 SOUTH, RANGE 5 WEST, WILLAMETTE MERIDIAN; SECTION 18 CORNER WEST 1/4
DONATION LAND CLAIM N/A CORNER N/A
CONDITION REPORT ; REFERENCED OUT ; RENEWED X; SURVEYED IN

LOCATION AND COMMENTS:

CORNER IS LOCATED ON A MODERATE SOUTHWEST FACING SLOPE IN AN AREA OF ±25 YEAR OLD D. FIR WITH SCATTERED OLDER FIRS AND HARDWOODS. TO REACH CORNER FROM THE INTERSECTION OF NW SKILLINGS DRIVE AND NW OAK CREEK DRIVE, FOLLOW NW SKILLINGS DRIVE NORTHWESTERLY FOR 0.76 MILES TO A STARKER FORESTS GATE. TRAVEL THROUGH GATE AND STAY ON MAIN ROAD FOR 0.57 MILES TO A WYE, TURN RIGHT FOR 0.54 MILES TO A WYE, STAY RIGHT FOR 0.21 MILES TO A WYE, TURN LEFT FOR 0.10 MILES AND PARK. WALK SOUTHWEST ABOUT 20 FEET TO THE CORNER. CORNER IS BAD FOR PREMARKING AND GPS CONTROL.

MONUMENTS AND ACCESSORIES FOUND (CONDITION AND SOURCE):

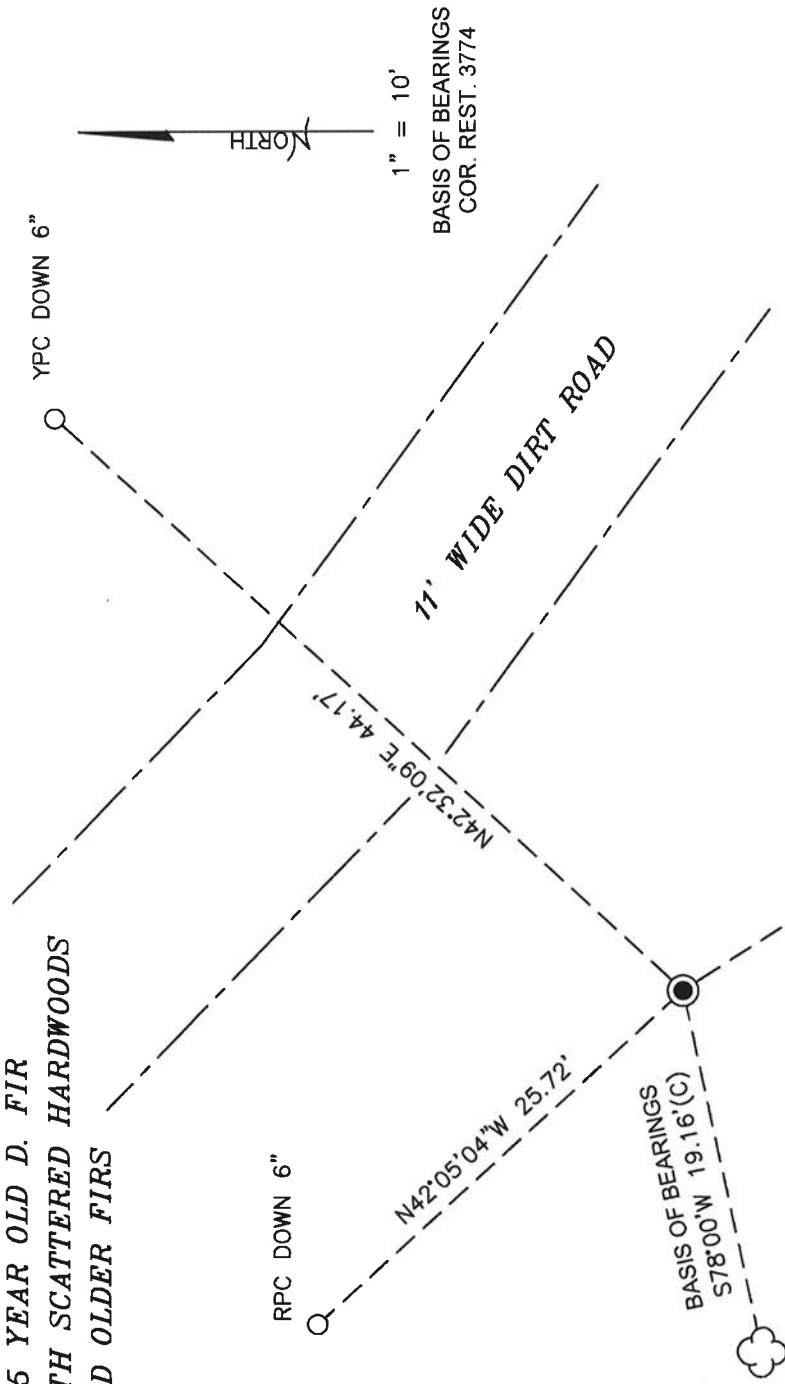
1. FOUND 3-1/4" BRASS DISK CEMENTED IN 2" IRON PIPE AND MARKED AS SHOWN ON PAGE 2 OF 2, FIRMLY SET AND UNDISTURBED, UP 3" ABOVE GROUND SURFACE.
(SET POST, DROVE CHARRED STAKE, MADE MOUND WITH TRENCH AS PER RECORD [01]).
(POSITION SURVEYED AND CALCULATED BY PROPORTION, BUT CORNER NOT DESCRIBED PER RECORD [02]).
(SET 3" BENTON COUNTY BRASS CAP MARKED "T11S R6W 1/4 R5W S13 S18 PLS 1823 1989" BY SINGLE PROPORTION AS PER RECORD [03]).
(SET 3" BRASS CAP MARKED "T11S R6W 1/4 R5W S13 S18 PLS 1823 1989" ON 2" X 36" IRON PIPE AS PER RECORD [04]).
(3" BENTON COUNTY BRASS CAP ON A 2" PIPE AS PER RECORD [05]).
2. FOUND D. FIR 40" DIA WITH HEALED FACE BEARS S78°00'W, 19.16 FEET TO CENTER. **BASIS OF BEARINGS FOR THIS RESTORATION.** SET ALUMINUM NAIL AND PLASTIC WASHER IN SOUTHERLY BASE FOR DISTANCE MEASUREMENT.
(D. FIR 17" DIA BEARS S78°W, 19.4 FEET SCRIBED "1/4 S13 BT" ON A DOUBLE FACE AS PER RECORD [03]).
(D. FIR 17" DIA BEARS S78°W, 19.40 FEET SCRIBED "1/4 S13" ABOVE "BT" AS PER RECORD [04]).
3. FOUND OAK 14" DIA WITH HEALED FACE BEARS S32°45'E, 35.42 FEET TO CENTER. SET ALUMINUM NAIL AND PLASTIC WASHER IN NORTHEASTERLY BASE FOR DISTANCE MEASUREMENT.
(SCRUB OAK 8" DIA BEARS S32°E, 35.2 FEET SCRIBED "BT" AS PER RECORD [03]).
(OAK 8" DIA BEARS S32°E, 35.20 FEET SCRIBED "BT" AS PER RECORD [04]).

MONUMENT SET (PROCEDURES AND DESCRIPTION):

FOUND 3-1/4" BRASS DISK CEMENTED IN 2" IRON PIPE AND MARKED AS SHOWN ON PAGE 2 OF 2, FIRMLY SET AND UNDISTURBED, UP 3" ABOVE GROUND SURFACE. BRASS DISK AND IRON PIPE WERE SET BY THEODORE JAMES LANGTON, P.L.S., IN 1989, BY SINGLE PROPORTION BETWEEN FOUND SECTION CORNERS ONE HALF MILE NORTH AND SOUTH. NO ORIGINAL EVIDENCE OF THE GENERAL LAND OFFICE (GLO) POSITION WAS FOUND. SINGLE PROPORTION ALONG THE RANGE LINE IS THE PROPER METHOD TO ESTABLISH THIS LOST CORNER, THEREFORE THE BRASS DISK AND IRON PIPE ARE ACCEPTED FOR THE CORNER POSITION.

SET TWO NEW IRON ROD ACCESSORIES AS SHOWN ON PAGE 2 OF 2. SET 6 FOOT ORANGE CARSONITE "SURVEY MARKER" POST 1 FOOT NORTH OF BRASS DISK.

**±25 YEAR OLD D. FIR
WITH SCATTERED HARDWOODS
AND OLDER FIRS**

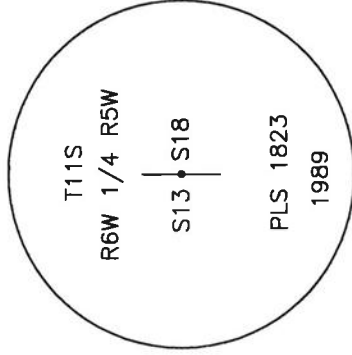


COR. REST. 3774 B.T.
40" D. FIR WITH
HEALED FACE

**±25 YEAR OLD D. FIR
WITH SCATTERED HARDWOODS
AND OLDER FIRS**

COR. REST. 3774 B.T.
14" OAK WITH
HEALED FACE

MONUMENT DETAIL



3-1/4" BRASS DISK

LEGEND

- SET 5/8" X 30" REBAR WITH PLASTIC CAP
- YELLOW PLASTIC CAP MARKED "BENTON COUNTY SURVEYOR"
- RPC
- RPC PLASTIC CAP MARKED "BENTON COUNTY SURVEYOR"
- (C) MEASUREMENT TO CENTER
- GOVERNMENT MONUMENT FOUND AS SHOWN
- COR. REST. CORNER RESTORATION
- B.T. BEARING TREE
- ☼ BEARING TREE AS NOTED

NEW ACCESSORIES:

1. SET REBAR (SEE LEGEND) N42°32'09"E, 44.17 FEET AND 6 INCHES BELOW GROUND LEVEL.
2. SET REBAR (SEE LEGEND) N42°05'04"W, 25.72 FEET AND 6 INCHES BELOW GROUND LEVEL.

NOTES:

COMPASS DECLINATION IS 15' EAST. ALL MEASURED DISTANCES AND BEARINGS ARE TO THE CENTER OF THE OBJECT, UNLESS OTHERWISE NOTED. ALL BEARING TREES ARE PAINTED AND HAVE A B.T. TAG ATTACHED, FACING THE CORNER UNLESS OTHERWISE NOTED. ALL NEW BEARING TREES HAVE A PLASTIC WASHER (STAMPED "SURVEY MARKER DO NOT REMOVE") ATTACHED BY AN ALUMINUM NAIL TO THE SIDE CENTER OF THE TREE FOR DISTANCE MEASUREMENT, UNLESS OTHERWISE NOTED.

THIS RESTORATION WAS PERFORMED AT THE DIRECTION AND APPROVAL OF
THE BENTON COUNTY SURVEYOR *gen*

REGISTERED
PROFESSIONAL
LAND SURVEYOR

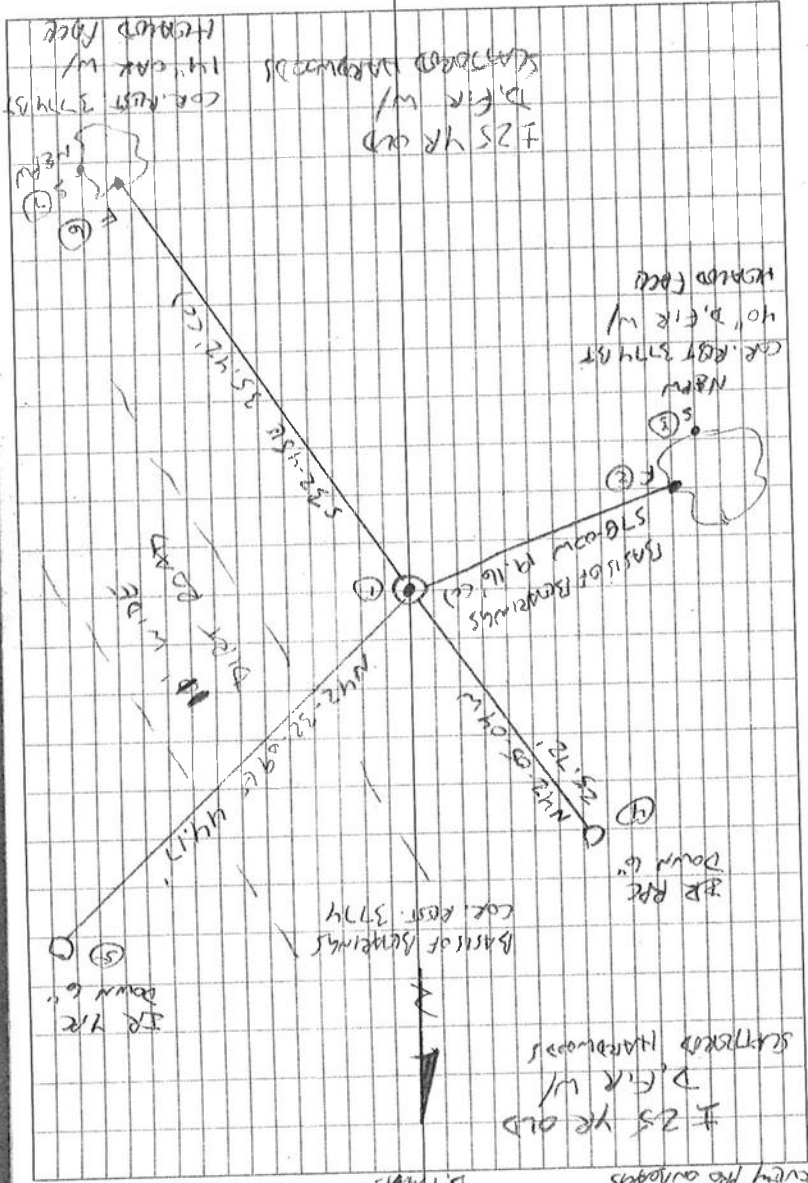
4/23/18 David L. Malone

FIRM/AGENCY: BENTON COUNTY SURVEYOR'S OFFICE
ADDRESS: 360 S.W. AVERY AVE., CORVALLIS, OR 97333; PH. 541-766-6821
PRESENT: DAVID L. MALONE, P.L.S., BERNARD ALTENBACH, SURVEY TECH.,
AND DAN FAAS, SURVEY TECH.

OREGON
JANUARY 12, 1999
DAVID L. MALONE
51523

EQUIPMENT: NIKON NIV03.C WITH SURVEY PRO ONBOARD.

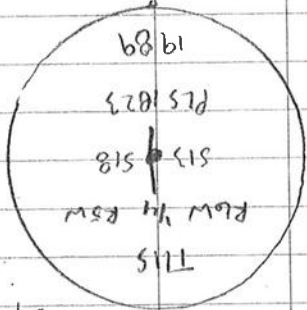
RENEWAL DATE: 12/31/18



3/50

2/8/18
 D. MATEW
 B. ALLEN
 D. FRANKS
 Nikon N103C
 survey pro angles

cool, overcast



E1

3-1/4" BRASS DISK

115100440

REFERENCE T115 R6W 13 & 18 ESW

FD 3-1/4" BRASS DISK CEMENTED INSIDE OF 2" ROD
 PIPE, FIRMLY SET & UNDISTURBED, UP 3" ABOVE GROUND
 SURFACE, FOR THE CORNER FD SW 1ST PER COR.
 REST. 3774 & HEAD FOR BASIS OF BEARINGS.
 FD SET PER COR. REST. 3774, SET 2 WPM
 ROD PAD ACCESSORIES SET TO GRADE CORNER
 "SURVEY MARKER" POST 1' NORTH OF BRASS DISK.

BR = 5/8" x 30" BRONZ
 YR OR RPR = YELLOW OR RED
 PLASTIC CAP MARKED
 "GENERAL COUNTY SURVEYOR"
 N&PW = NAIL & PLASTIC WASHOR
 MARKED "SURVEY MARKER"
 DO NOT REMOVE

BENTON COUNTY CORNER RESTORATION FORM

115100440 3774

SECTION 13, 18 TOWNSHIP 11 S RANGE 5, 6 W DLC

CORNER 1/4 13/18

DATE 6/15/89 CORNER RESTORATION FIELD BOOK NUMBER PAGE

CORNER DESIGNATION:

1/4 corner Sections 13 and 18

- ___ CONDITION REPORT ONLY
- ___ REFERENCED OUT
- ___ RENEWED
- SURVEYED IN

LOCATION AND COMMENTS:

in a meadow on a south aspect approx. 1500 ft. east of Alder Creek Rd.

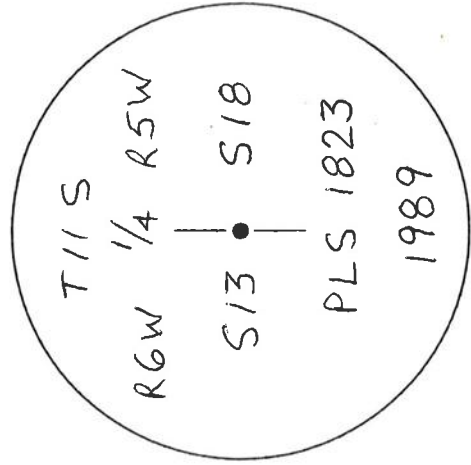
PREVIOUS RENEWALS/SURVEYS, ETC.:

NONE

MONUMENTS AND ACCESSORIES FOUND (CONDITION AND SOURCE):

NONE

MONUMENT DETAIL



Set 3" Brass Cap "Benton County"

MONUMENT SET (PROCEDURES AND DESCRIPTION):

By single Proportion between found section corners one half mile north and south (see record of survey) CS 8420

NEW ACCESSORIES:

A 17" D. Fir bears S 78° W 19.4 feet scribed "1/4 S13BT" on a double face

An 8" scrub oak bears S 32° E 35.2 feet scribed "BT" A white P.V.C. Pipe was placed North 1.0 Feet

NOTES:

There is blazed property line north and west out of this corner

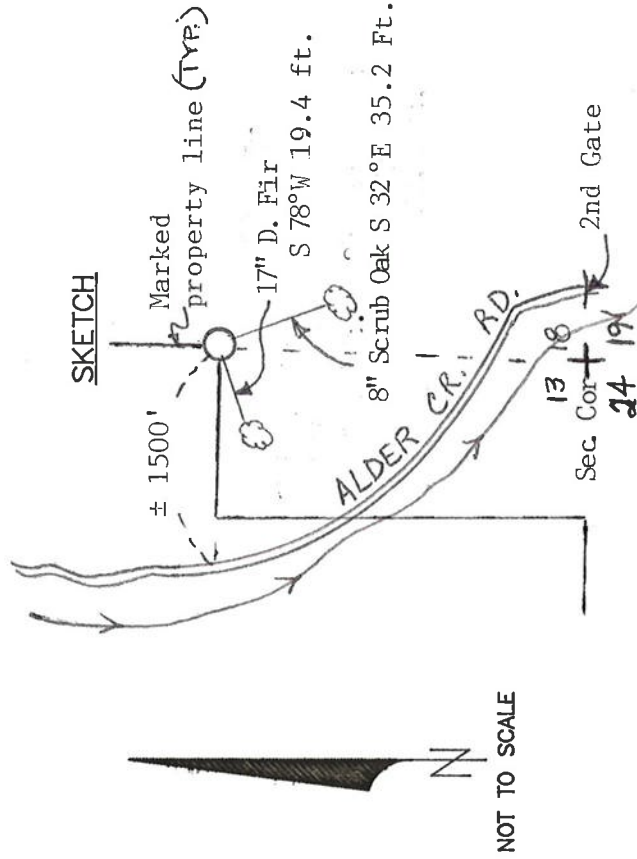
FIRM/AGENCY: Northstar Surveying, Inc.

ADDRESS: 402 N.W. 5th Street; Corvallis, Oregon 97330

PARTY CHIEF: Robert Cook

CREW: WITNESS: Jeff Wolf

SKETCH



NOT TO SCALE

REGISTERED PROFESSIONAL LAND SURVEYOR

Theodore James Langton

OREGON JULY 13, 1979 THEODORE JAMES LANGTON 1823