

115140700

CORNER FILE TRACKING

S:\Survey Corners\CORNERS\Templates\Filetrac2.doc
10/04/2010

CORNER NUMBER
115140700

STEP	HISTORY	RESTORATION
Form Prepared, DB	3/13/10	4/6/10
Field Inspection, DB	3/29/10	3/29/10
Finish index (count unit)	3/13/10	3/29/10
Counter Index	4/5/10	4/5/10
GIS Index Form	4/5/10	4/5/10
Checked, DB	4/11/10	4/11/10
Form Edited, DB	4/27/10	4/27/10
Form Signed, DB	4/27/10	4/27/10
Authorize Payment, DB	—	—
Archive Digital Files	4/27/10	4/27/10
Collect Documents	4/6/10	4/6/10
PDF File	4/27/10	4/27/10
Copy For Filming	4/27/10	4/27/10
Scanned (pdf to laserfiche)	4/27/10	4/27/10
Filmed (Archived), DB		
Filed, DB		

(DB) = Entry needed in database (Access).

COMMENTS:

DATE 03/13/2018TOWNSHIP 11 SOUTH, RANGE 5 WEST, WILLAMETTE MERIDIAN; SECTION 6 CORNER NORTH 1/4
DONATION LAND CLAIM N/A CORNER N/A**COMMON CORNER(S):**

POINT ON SOUTH LINE OF SECTION 31, TOWNSHIP 10 SOUTH, RANGE 5 WEST

RECORDS (INFORMATION IN *BOLD ITALICS* IS COUNTY STAFFS' INTERPRETATION OF THE RECORD)

BASED ON EXTENSIVE RESEARCH AND RECOVERY OF EVIDENCE, THIS OFFICE HAS DETERMINED THAT MOST GENERAL LAND OFFICE SURVEYORS IN BENTON COUNTY MEASURED TO THE FACE OF BEARING TREES.

- [01] GENERAL LAND OFFICE (GLO) NOTES BY GEORGE W. HYDE, D.S., DATED MAY 17, 1852. *SET POST FROM WHICH A MAPLE 10" DIA BEARS S2-1/2°E, 45 LINKS (29.70 FEET); A FIR 40" DIA BEARS N9°E, 35 LINKS (23.10 FEET).*
- [02] BENTON COUNTY CORNER RESTORATION FORM NO. 3730 BY MARVIN L. ROWLEY, P.L.S., DATED DECEMBER 2, 1987. *FOUND FIR 40" DIA (GLO BT) BEARS N9°E, 23.1 FEET, BLAZED. MAPLE 10" DIA (GLO BT) AND POST NOT FOUND. FROM 40" GLO BT MEASURED 35 LINKS (23.1 FEET) FROM ASSUMED FACE OF TREE AT A BEARING OF S9°W, USING A DECLINATION OF 19°E. SET A 2-5/8" BRASS CAP STAMPED "MCDONALD FOREST T10S R5W S31 1/4 S6 T11S R5W" ON A 3/4" IRON PIPE APPROXIMATELY 20" IN LENGTH. MARKED ALDER 16.6" DIA BEARS S24°W, 11.2 FEET TO THE "BT" BLAZE AT BASE OF TREE.*

FIRM/AGENCY: BENTON COUNTY SURVEYOR'S OFFICE
ADDRESS: 360 S.W. AVERY AVE., CORVALLIS, OR 97333; PH. 541-766-6821
RESEARCH BY: DAVID L. MALONE, P.L.S.
DATA ENTRY BY: SAME

BENTON COUNTY CORNER RESTORATION FORM, PAGE 1 OF 2, 115140700R1
SEE CORNER HISTORY FORM FOR RECORDS ETC.

CORNER RESTORATION FIELD BOOK NUMBER 31 PAGE(S) 70 DATE 03/29/2018
TOWNSHIP 11 SOUTH, RANGE 5 WEST, WILLAMETTE MERIDIAN; SECTION 6 CORNER NORTH 1/4
DONATION LAND CLAIM N/A CORNER N/A
CONDITION REPORT ___; REFERENCED OUT X; RENEWED ___; SURVEYED IN ___

LOCATION AND COMMENTS:

CORNER IS LOCATED ON A VERY STEEP SOUTHEAST FACING SLOPE WITH ±25 YEAR OLD D. FIR TO THE NORTH AND MIXED AGE FIRS AND HARDWOODS TO THE SOUTH. TO REACH CORNER FROM THE OSU RESEARCH FORESTS 700 ROAD GATE AT THE END OF SULPHUR SPRINGS ROAD, TRAVEL THROUGH GATE AND FOLLOW THE 700 ROAD FOR 0.34 MILES TO A WYE, STAY RIGHT FOR 0.49 MILES TO A WYE, TAKE RIGHT FOR 0.22 MILES TO A WYE, TAKE RIGHT FOR 0.54 MILES TO A WYE, TAKE LEFT FOR 0.16 MILES TO A TRAIL AND PARK. FOLLOW TRAIL NORTHWESTERLY FOR ABOUT 470 FEET, THEN LEAVE TRAIL AND WALK NORTHEAST FOR ABOUT 275 FEET TO THE SECTION LINE AT THE BOTTOM OF A VERY STEEP SLOPE. TRAVEL WEST UP THE STEEP SLOPE ABOUT 50 FEET TO THE CORNER. CORNER IS BAD FOR PREMARKING AND GPS CONTROL.

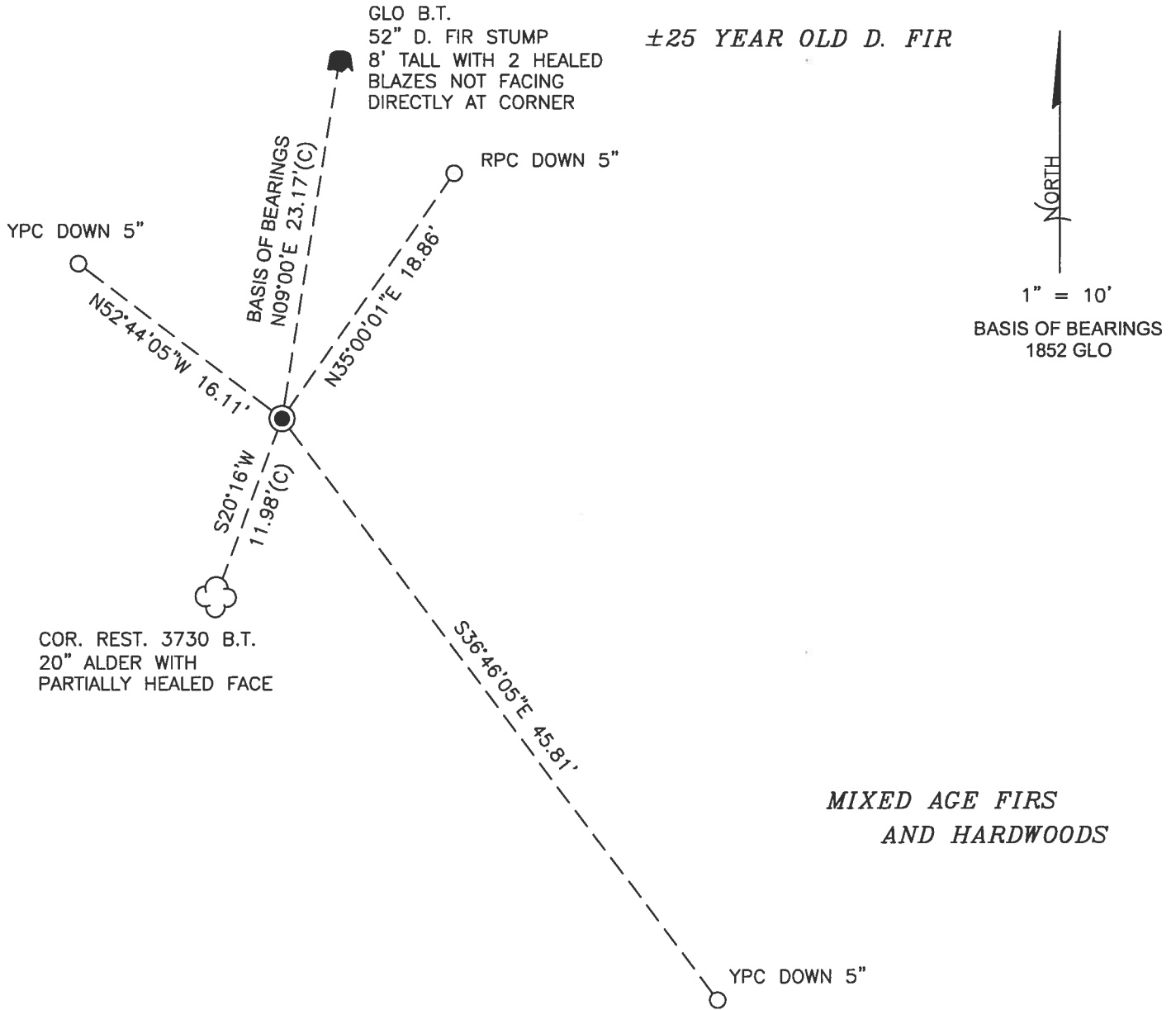
MONUMENTS AND ACCESSORIES FOUND (CONDITION AND SOURCE):

1. FOUND 2-5/8" BRASS CAP MARKED AS SHOWN ON PAGE 2 OF 2 ON 1" OUTSIDE DIAMETER IRON PIPE, FIRMLY SET AND UNDISTURBED, UP 4" ABOVE GROUND FOR THE CORNER.
(SET POST AS PER RECORD [01]).
(SET 2-5/8" BRASS CAP STAMPED "MCDONALD FOREST T10S R5W S31 1/4 S6 T11S R5W" ON A 3/4" IRON PIPE APPROXIMATELY 20" IN LENGTH AS PER RECORD [02]).
2. FOUND 8' TALL D. FIR STUMP 52" DIA WITH 2 HEALED BLAZES BEARS N9°00'E, 23.17 FEET TO CENTER. THE BLAZES DO NOT DIRECTLY FACE THE CORNER. **BASIS OF BEARINGS FOR THIS RESTORATION.**
(FIR 40" DIA BEARS N9°E, 35 LINKS [23.10 FEET] AS PER RECORD [01]).
(FOUND FIR 40" DIA BEARS N9°E, 23.1 FEET, BLAZED AS PER RECORD [02]).
3. FOUND ALDER 20" DIA WITH PARTIALLY HEALED FACE BEARS S20°16'W, 11.98 FEET TO CENTER. SET ALUMINUM NAIL AND PLASTIC WASHER IN NORTHWESTERLY BASE FOR DISTANCE MEASUREMENT.
(MARKED ALDER 16.6" DIA BEARS S24°W, 11.2 FEET TO THE "BT" BLAZE AT BASE OF TREE AS PER RECORD [02]).

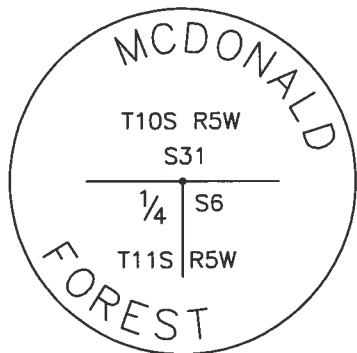
MONUMENT SET (PROCEDURES AND DESCRIPTION):

FOUND 2-5/8" BRASS CAP MARKED AS SHOWN ON PAGE 2 OF 2 ON 1" OUTSIDE DIAMETER IRON PIPE, FIRMLY SET AND UNDISTURBED, UP 4" ABOVE GROUND FOR THE CORNER. BRASS CAP AND IRON PIPE WERE SET BY MARVIN L. ROWLEY, P.L.S., IN 1987 FROM AN ORIGINAL GENERAL LAND OFFICE (GLO) BEARING TREE. THE CORNER POSITION FITS RELATIVELY WELL WITH THE REMAINING GLO BEARING TREE STUMP AND IS ACCEPTED AS A PERPETUATION OF THE ORIGINAL GLO CORNER POSITION.

SET THREE NEW IRON ROD ACCESSORIES AS SHOWN ON PAGE 2 OF 2. SET 6 FOOT ORANGE CARSONITE "SURVEY MARKER" POST 1 FOOT NORTH OF BRASS CAP.



MONUMENT DETAIL



2-5/8" BRASS CAP

LEGEND

- SET 5/8" X 30" REBAR WITH PLASTIC CAP
- YPC YELLOW PLASTIC CAP MARKED "BENTON COUNTY SURVEYOR"
- RPC RED PLASTIC CAP MARKED "BENTON COUNTY SURVEYOR"
- (C) MEASUREMENT TO CENTER
- GOVERNMENT MONUMENT FOUND AS SHOWN
- COR.REST. CORNER RESTORATION
- GLO GENERAL LAND OFFICE
- B.T. BEARING TREE
- BEARING TREE STUMP AS NOTED
- ☁ BEARING TREE AS NOTED

NEW ACCESSORIES:

1. SET REBAR (SEE LEGEND) N52°44'05"W, 16.11 FEET AND 5 INCHES BELOW GROUND LEVEL.
2. SET REBAR (SEE LEGEND) N35°00'01"E, 18.86 FEET AND 5 INCHES BELOW GROUND LEVEL.
3. SET REBAR (SEE LEGEND) S36°46'05"E, 45.81 FEET AND 5 INCHES BELOW GROUND LEVEL.

NOTES:

COMPASS DECLINATION IS 15° EAST. ALL MEASURED DISTANCES AND BEARINGS ARE TO THE CENTER OF THE OBJECT, UNLESS OTHERWISE NOTED. ALL BEARING TREES ARE PAINTED AND HAVE A B.T. TAG ATTACHED, FACING THE CORNER UNLESS OTHERWISE NOTED. ALL NEW BEARING TREES HAVE A PLASTIC WASHER (STAMPED "SURVEY MARKER DO NOT REMOVE") ATTACHED BY AN ALUMINUM NAIL TO THE SIDE CENTER OF THE TREE FOR DISTANCE MEASUREMENT, UNLESS OTHERWISE NOTED.

THIS RESTORATION WAS PERFORMED AT THE DIRECTION AND APPROVAL OF THE BENTON COUNTY SURVEYOR *Jlm*

REGISTERED
PROFESSIONAL
LAND SURVEYOR

FIRM/AGENCY: BENTON COUNTY SURVEYOR'S OFFICE
 ADDRESS: 360 S.W. AVERY AVE., CORVALLIS, OR 97333; PH. 541-766-6821
 PRESENT: DAVID L. MALONE, P.L.S., AND BERNARD ALTENBACH, SURVEY TECH.
 EQUIPMENT: NIKON NIVO3.C WITH SURVEY PRO ONBOARD.

4/27/18 David L. Malone

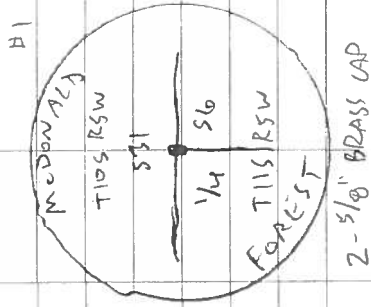
OREGON
 JANUARY 12, 1999
 DAVID L. MALONE
 51523

RENEWAL DATE: 12/31/18

115140700

REFER. T 1/8 RSW N 1/4 S 6

2-5/8" BRASS CAP ON 1" O.D. BRON PIPE, FIRMLY SET & UNDISTURBED UP 4' ABOVE GROUND, FOR THE GRAVE. FD 6/16 NE FIR ST STUMP & 1422N FOR BASIS OF BEARINGS, FD SW ALDER BST. SET 3 NEW 1/2" ROD ACCESSORIES, SET FOOT ORANGE CARBORITE "SURVEY MARK OR" POS 1' NORTH OF BRASS CAP.



BR = 5/8" x 30" BRON ROD
 1/4" OR RPC = YELLOW OR RED
 PLASTIC CAP MARKED
 "BENTON COUNTY SURVEYOR
 NEW = NAIL & PLASTIC WASHER
 MARKED "SURVEY MARKER DO NOT REMOVE"

COOL, OVERCAST

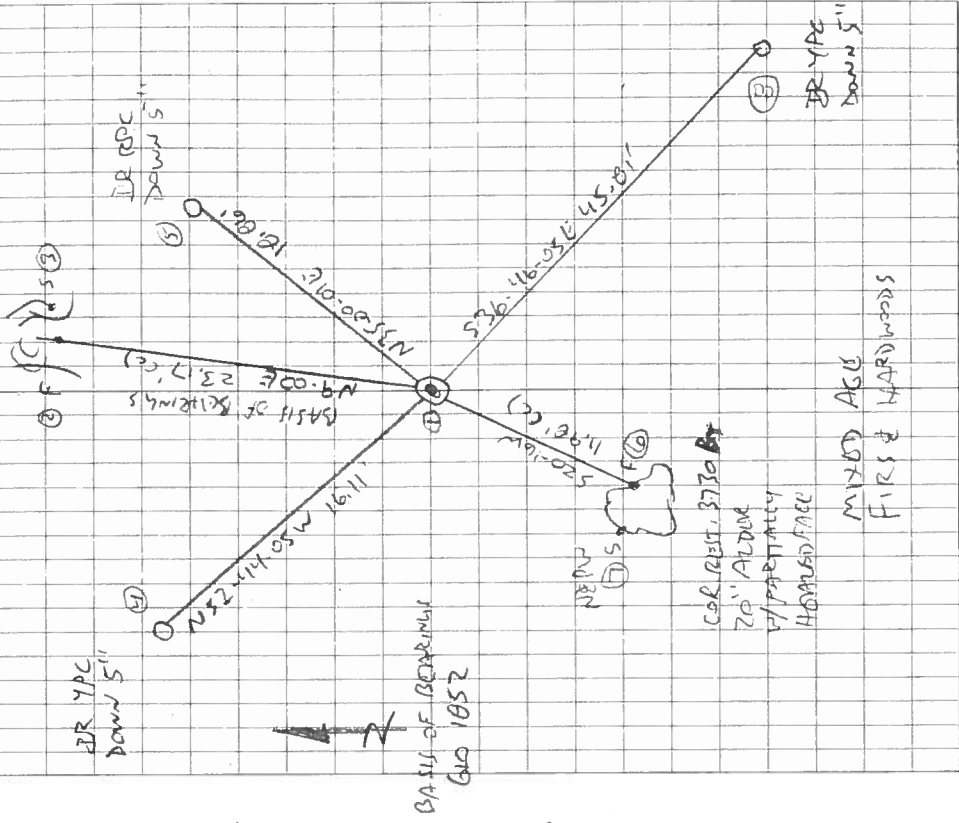
3/29/18

D. MAGNANI
B. AUTENBERG

NIKON N1003.C
SURVEY PRO ON BATTERY

± 25 YR OLD
RECORDED

610 BST
52" D FIR STUMP
8" TRAIL W/ 2 HELIXES BURETS
NOT FIRM BRASS CAP



BR YPC
DOWN 5"

(A)

(B)

(C)

(D)

(E)



BASIS OF BEARINGS
610 1052

520' 10\"/>

CR. REST, 3730
20" ALDER
V. PARTIALLY
HORIZONTAL FAC

MIXED AGE
FIR & HARDWOODS

BR YPC
DOWN 5"

(E)

3/1/70

115140700 3730

OREGON CORNER RESTORATION FORM

Section 6 Township 11S Range 5W

County BENTON Date 12/2/87

CORNER DESIGNATION

T. 10S., R. 5W., W.M.
SEC. 31
1/4 SEC. 6
T. 11S R. 5W

- Condition Report Only
- Not Found
- Renewed
- Unrecorded
- Surveyed In
- Referenced Out

Previous Renewals/Surveys, etc. ORIGINAL NOTES G.L.O. PAGE 380 AT BENTON COUNTY PUBLIC WORKS OFFICE 360 SW AVERY CORVALLIS, OREGON 97333

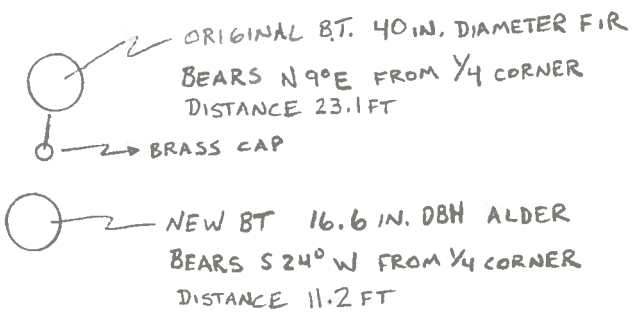
Monument(s) & Accessories Found: (Condition and Source)

- FIR 40 IN. DIAMETER (AS DESCRIBED IN ORIGINAL NOTES), BLAZED
- MAPLE 10 IN. DIAMETER NOT FOUND
- QUARTER SECTION POST NOT FOUND

Monument Detail

Sketch

MONUMENT SET:



BRASS CAP O.D. 2 5/8"
3/4" IRON PIPE APPROX. 20" LENGTH

Monument Set (Procedures and Description)

FROM 40 IN. ORIGINAL BEARING TREE MEASURED 35 LKS (23.1 FT) FROM ASSUMED FACE OF TREE AT A BEARING OF S 9° W USING A DECLINATION OF 19° E, SET A BRASS CAP (SHOWN ABOVE) & NEW BEARING TREE

New Accessories

- A. BRASS CAP (SHOWN ABOVE)
- B. NEW BT FOR ^{NEW} 1/4 SEC. 6 T. 11S., R. 5W. W.M. : 16.6 IN DBH, ALDER. FROM THE MONUMENT TO THE B.T. BLAZE AT BASE OF TREE S 24° W 11.2 FT
- C. PUT A LOCATION POSTER ON BOTH B.T.'S USED

Location & Comments

MONUMENT SET ON EAST Compass Declination 19° E
FACING SLOPE Firm/Agency OSU RESEARCH FOREST
 Address #216 PEAVY HALL CORVALLIS, OREGON
 Party Chief MARVIN L. ROWLEY
 Notes MARVIN L. ROWLEY
 Witness MARK R. NAUMAN

Surveyor's Seal

