

C.S. #355  
Witness  
Roy Swanson

N.W. cor. of Benj. Cutter D.L.C. #68 T.12-5  
Stone 6"x6"x24" in place Orig. stone.  
Cor. fence post 5" N.10°W. 117 cks.  
Short post in pasture N.8°E. 198 "  
Chittam 4" in dia. bears S.35½°E. 804 cks.  
Gate post S. 9°E. 962 cks.  
N.E. cor. of Wm. Ownby Ct South .60 .. Jan 20, 1928.  
N.E. cor. of Wm. Ownby D.L.C. #67 T. 12 S.R. 5 W.  
Set 1½"x36" Iron shaft from Stone N.60  
Cor. post N.2°W. 718  
Chittam 4" in dia. bears S.80½°E. 459 cks.  
W. gate post S. 21½°E. 378 "  
Anchor post South 517 " Jan 20, 1928.

" N.W. cor. of Wm. Ownby Ct. #67 T. 12-5  
Stone 6"x8"x18" in place. Orig. stone N.E. oak down.  
Oak 24" in dia. bears S 55°W .31 cks. std.  
" 6 " " " S. 46½°E. 442 " Jan. 20, 1928

Stump  
P. 5 W.  
gate  
impr.

" Most South N.E. corner of Boshrod W. Wilson D.L.C. #64 T.12-5  
Stone 6"x6"x30" in place. Orig. Stone. N.W. oak down  
Oak 12" in dia. bears N. 33° E. 121 std.  
" 16 " " " N. 80° E. 048 cks.  
" 8 " " " S 10° E. 053 " Jan. 20, 1928

5 W.

" Int. cor. of B.W. Wilson D.L.C. #69 T.12-5  
Set a ¾" pipe 34" long.  
Oak 15" in dia. bears N.51°E. 91 cks. std.  
" 12 " " " N.30°W. 87 " "  
U.S. G. S. B.M. N. 31°30'E. 1185 cks. Jan. 21, 1928.

C.S. 308  
For F.B. Decker  
Roy Swanson  
Witness

¼ sec. cor. bet. secs. 2 & 3. T. 13S. R. 6 W.  
Set 2" pipe from stump and tree  
Oak Stump 24" in dia. bears N.6°W. 76 cks. orig. tree  
" 24 " " " S. 25°E 140 " " "  
Fir 22 " " " N. 30°30'E. 418 "

923 cks

C.S. R.R. Cor  
Mar 11, 1930  
C.C. Kestey Wit  
H.W. Larsen

S.E. Cor. Sec. 30 - T. 11 S. R. 5 W. W.M.  
Set 1" pipe 12" under the surface 6.092+- E and  
3.77 North of N.E. Corner of Luke Mulkey Ch. 58  
S.E. Cor. Barn bears N 55°W & N.E. Cor House bears S 67°W.  
Silver maple 10" in dia. bears S 61°W 1.593 cks. dist.  
Oak stump 17 " " " N 19°W 8.63 Orig.

Salmony  
Set in 1930  
Mar 11 1930  
W. S. Swanson  
Wit. Roy Swanson

N.E. Cor. Hamill Backing them Ch. 53 T. 7, 4 S. R. 6 W  
1.5 from sec. cor. 1164 W. of S.W. Cor. Polly Belmont Ch  
Cor. of building 1.101 1004 cks  
" " " " 1.150°E. 1009 "  
N.W. cor. of sec. 30 T. 11 S. R. 5 W. 1.993 cks.

1929  
W. W. L.  
Witness  
Hughes  
Syd. Mohr

N.E. Corner of Jacob Martin Cl. 66, T. 12 S. R. 5 W  
Found Set Stone 8"x8"x14" from which an  
Oak 36" in diameter bears N57°E 1.02 chs  
Oak 10" " " " N 85°E .29 "  
" 30" " " " S 84°E .25 "  
Ash 8" " " " North 1.06

N.W. Corner of Jacob Martin Cl. 66, T. 12 S. R. 5 W  
Set Oak Stake <sup>1/2</sup> in dia from which a Crab  
Crab apple 8" in diameter bears S 81°W .236 chs  
Anchor Post " " " S 40°W .04 "

S.W. corner of Bushrod Wilson Cl. 64, T. 12 S. R. 5 W  
Set 1" rod east of fence P.O.  
See recorded plat.

1930  
W. W. L.  
Rex Clemens

1/4 Cor on N. of Sec. 17, T. 12 S. R. 6 W  
Stake - stone 6"x12"x14" c.s.  
Fir 10" in diameter bears S 55°E .27 chs  
" 16" " " " N 23°E .165 "  
Oak 8" " " " " N 83 1/2°W .31 " std.  
" 8" " " " " S 74°W .73 " "

N.W. Cor. Sec 17, T. 12 S. R. 6 W  
Set fir limb <sup>1/2</sup> in dia and tile from which a  
Fir 60" in diameter bears S 18°E .376 chs  
" 8" " " " " N 26°W .31 " stum.  
" 12" " " " " S 85°E .06 " std.  
" 8" " " " " S 54°W .1.09 " "

1/4 corner on W. line of Sec. 17, T. 12 S. R. 6 W  
Set Stake + Iron from which a  
Fir 24" in dia bears S 23°W 1.46 chs  
Dogwood 5" " " " S 14°E 1.345 dead  
Fir 65" " " " " N 35°W .1.31 chs

March 11, 1930  
W. W. L.  
C. C. Keesey Wit.

S.E. Cor. Sec. 30, T. 11 S. R. 5 W  
Set 1" pipe 10" under surface from which  
S.E. corner of Barn bears N 55°W  
5 1/2" pipe 10" under surface dia 10" S 61°W 1.520 chs  
N.W. cor house " " S 67°W  
Oak 14" " " " N 19°W E. 6

Oct 8, 1930  
W. W. L.  
Witness  
Paul Starr  
By Law

N.E. Corner Polly Belknap Cl. 39, T. 14 S. R. 5 W  
Set Oak Stake Replaced with a 2" Cent Iron from which  
Oak 24" in diameter bears N 85°E  
" 10" " " " N 6°W  
" 10" " " " N 20°E  
" 14" " " " S 11°W

1921  
W. Larkin  
S. Lee  
D. Ewing  
C. Galloway  
C.S. 247  
N.C. Galloway  
Apr 27, 1920  
Wilson W. Hiram  
C.S. 247  
Sept. 1930  
W. C. G.  
Wilson Gordon B.  
C.S. 247  
W. C. G.  
W. Larkin  
W. Gray  
W. Huskey  
1930

S. E. corner section 30, Twp. 11 S., R. 5 W. W. M.

Reestablishment by ~~W. C. Galloway~~ \*

March 11, 1930

Set 1" pipe 12" under the surface, 6.092 + East and 3.77 north of N. E.  
 corner of Luke Mulkey Cl 58, S. E. corner barn bears N 55° W and N. E. corner  
 House bears S 67½° W, Silver maple 10" in diam bears S 61° W 1.593 chains  
 Oak stump 14" in diam bears N 19° W 8.63 chains(orig.)  
 Witness C. C. Keasey

\* WALTER W. LARSEN, SEE FIELD BOOK NO. 1 PAGE 187 (CJL 1/5/1993).

S. E. corner Section 30, Twp. 11 S., R, 5 W.

Reestablishment by ~~W. C. Galloway~~ \*

March 11, 1930

Set 1" pipe 10" under surface  
 S. E. corner of barn bears N 55° W  
 Silver Maple 10" in diam bears S 61° W 1.593 chains  
 N. E. corner house bears S 67½° W  
 Oak 14" in diam bears N 19° W 8.63 chains(standing)  
 Witness C. C. Keasy

\* walter w. larsen, see field book no. 1 page 190 (cj1 1/5/1993).

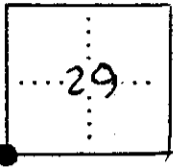
115200200

BENTON COUNTY SURVEYORS OFFICE - CORNER RESTORATION

3290

T. 11 S. R. 5 W. W. B. & M., BENTON COUNTY, OREGON  
SECTION 29

REPORTED BY JOHN RINALDI JR.  
TITLE BENTON COUNTY SURVEY CREW CHIEF  
DATE SEPTEMBER 6, 1984



● OFFICIAL CORNER FOUND  
○ CORNER SET

SEC. CORNER, COMMON TO SEC. 30, 29, 31 & 32  
IS \_\_\_\_\_  
DESCRIBE \_\_\_\_\_

ADDITIONAL INFORMATION

FOUND 1" (INNER DIA.) IRON PIPE, 8" BELOW GROUND SURFACE, PER CALLOWAY CORNER RESTORATION CARD # 738. PIPE WAS SPLIT AT THE TOP AND RUSTED. RESET WITH 1/4" (INNER DIA.) IRON PIPE, 30" LONG, WITH 3" BRASS CAP (SEE BRASS CAP DETAIL ON REVERSE), 14" BELOW GROUND SURFACE.

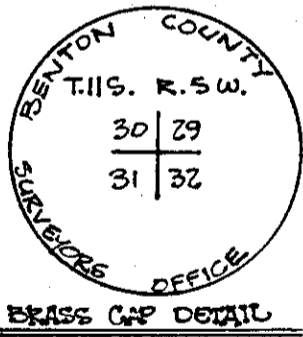
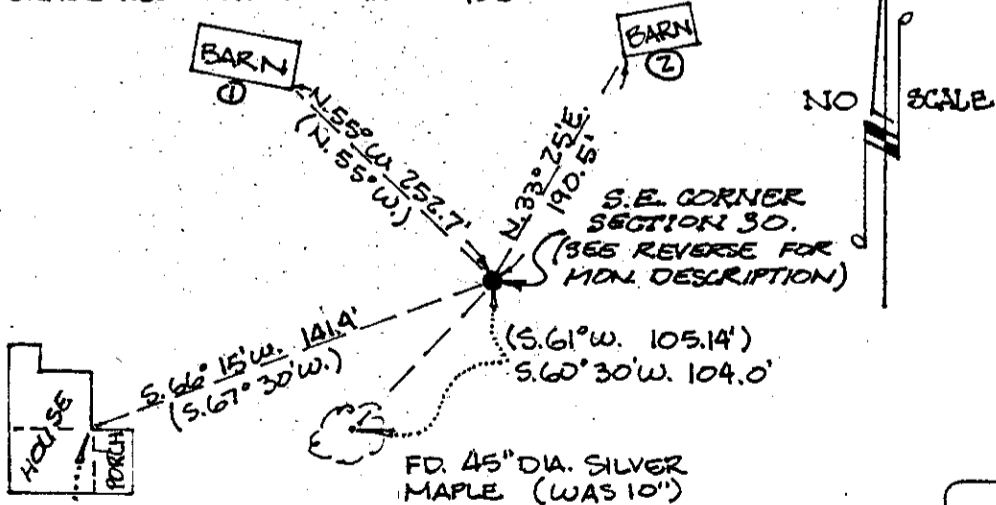
LEGIBLE MARKS ON BEARING OBJECTS

	NONE	NONE	NONE	NONE
KIND	S/E CORNER OF BARN (1)	SILVER MAPLE	N/E CORNER OF HOUSE	S/W CORNER OF BARN (2)
SIZE	-	45" DIA	-	-
BEARING	N. 55° W.	S. 60° 30' W.	S. 66° 15' W.	N. 33° 25' E.
DISTANCE	252.7'	104.0'	141.4'	190.5'
BT TAG POSTED	NO	YES	NO	NO

OVER

LEGEND:

( ) INDICATES RECORD INFO. PER CORNER RESTORATION CARD # 738



FOUND INSIDE CORNER OF HOUSE WITH A VERTICAL SEAM IN THE WOOD PANELING INDICATING THAT THE HOUSE MAY HAD BEEN ADDED TO ON THE NORTH AND A PORCH ADDED TO THE EAST. OWNER NOT PRESENT FOR VERIFICATION.

REGISTERED PROFESSIONAL LAND SURVEYOR  
*John Rinaldi, Jr.*  
OREGON JULY 15, 1983  
JOHN RINALDI, JR.  
2056