

C.S. #119
Continued

Corner to secs. 10, 11, 14 & 15 T. 13-5

Set a 1/2" galv. pipe

Set 1 1/4" galv. pipe south on line 30 feet

Thorn 12" in dia. bears S 41° W. 4.95 chs.

Witness Claude Buchanan March 2, 1918.

1/4 sec. cor. bet. secs. 11 & 14 T. 13 5.

Set 1 1/4" x 33" galv. pipe, and a 1 1/4" galv. pipe south .446 chs.

Pine stump N. 65° E 4.41 chs which is 2 rds. long for dist.

Ash 15" in dia. bears S 78° E 2.23 chs. std. letters on tree

N. L. cor. of concrete bridge N. 83° 24' E 1.526 chs.

Witness Claude Buchanan March 2, 1918.

C.S. 119 N.W. corner of Richard Irwin D.L.C. #51 T. 13-5

Set 1 1/4" pipe

Oak 15" in dia. bears N 51° E. 4.55 chs. std.

" 24" " " S. 89° E. 5.29 " "

Witnesses R.D. Coates & P.F. Thomas Oct. 20, 1911.

N.W. corner of John E. Porter D.L.C. #50 T. 13-5.

Found orig. stone covered but in good condition.

A 1" pipe bears S. 89° 59' E. 22.867 chs.

" 1" " N 89° 59' W. 28.235 chs.

C.S. #245
Continued

Meander Corner on E. bnk. of Long Tom bet. secs. 25 & 36 T. 13-5

Set 1 1/4" pipe

W fir 15" in dia. bears N 3° W. .85 chs. std

" " 20" " " S. 61° W. .05 " "

Witnesses E.A. Miller & Warren Averil. March 25, 1918

C.S. #270

1/4 sec. cor. between secs. 28 & 29, T. 11 S. R. 5 W.

Set Qt. bothe

Oak 12" in dia. bears S. 17° E. 1.80 chs. std

" 16" " " S 45° W 2.45 " "

" 8" " " S 62° W .038 "

Witnesses Edward & Elvin Witham March 28, 1918.

1/4 sec. cor. between 20 & 29 T. 11-5

Set 1/2" x 18" galv. pipe

Oak 5" in dia. bears North 273 chs.

" 14" " " N 63° E. 1.45 " std.

" 12" " " S. 84° E. 2.95 " "

Witnesses: as above March 29, 1918.

1/4 sec. cor. between secs. 29 & 30 T. 11 S R 5 W

Set 1/2" x 18" galv. pipe

Oak 4" in dia. bears N. 66° 40' E. 4.50 chs.

" 20" " " S. 42° 30' E. 1.75 " std.

" 12" " " S 7° 15' W. 2.00 " "

Witnesses: as above March 29, 1918

1/4-Section corner between sections 29 and 30, Twp. 11 S., R. 5 W.

733

Reestablishment by W. C. Galloway

March 29, 1918

Set 3/4" x 18" galvanized pipe 9" under surface

Oak 4" in diam bears N 66° 40' E

.450 chains

Oak 20" in diam bears S 42° 30' E

1.75 chains(standing)

Oak stump 12" in diam bears S 7° 15' W 2.00 chains(standing)

Witnesses Edward and Elvin Witham

By W. C. Galloway

1946

Pipe bears 8' W of fence

856

BENTON COUNTY SURVEYORS OFFICE - CORNER RESTORATION

03090

T 11 S, R 5 W, W. B. & M., BENTON COUNTY, OREGON

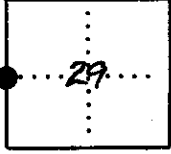
REPORTED BY DARRYL HARMS

SECTION 29

The information shown hereon was taken from
the referenced county survey. Date: 7/21/92^{CPL}

TITLE L.S. 1079

DATE 11-24-1982



● OFFICIAL CORNER FOUND

○ CORNER SET

1/4 CORNER COMMON TO SEC. _____ 29 & 30
3/4" I.D. PIPE PER C.S. 4308
DESCRIBE

ADDITIONAL INFORMATION

SEE C.S. 7471

OVER

LEGIBLE MARKS ON BEARING OBJECTS

KIND

SIZE

BEARING

DISTANCE

BT TAG POSTED

115200240

BENTON COUNTY SURVEYORS OFFICE - CORNER RESTORATION

3161

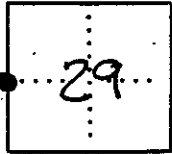
T 11 S, R 5 W, W. B. & M., BENTON COUNTY, OREGON

REPORTED BY JOHN RINALDI JR.

SECTION 29

TITLE BENTON COUNTY SURVEY CREW CHIEF

DATE AUGUST 2, 1983



● OFFICIAL CORNER FOUND

○ CORNER SET

1/4 CORNER COMMON TO SEC. 29, 30, 31, 32
2" (INNER DIA.) IRON PIPE (SEE REVERSE)

ADDITIONAL INFORMATION

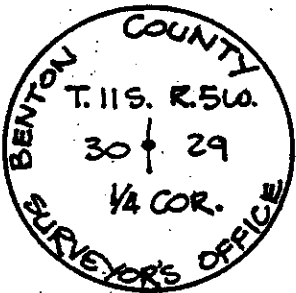
FOUND 3/4" (INNER DIA.) IRON PIPE 9" BELOW GROUND SURFACE IN EAST/WEST FENCELINE. FOUND ALSO 15" DIA. (WAS 4") WHITE OAK WITH OLD HEALED BLAZE, BOTH PER MARCH 29, 1918 (D.C. GALLOWAY CORNER RESTORATION CARD.

(SEE REVERSE)

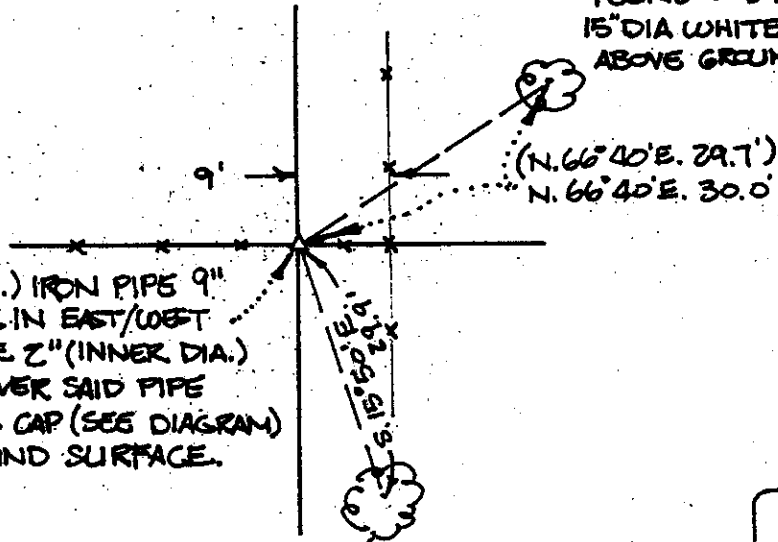
OVER

LEGIBLE MARKS ON BEARING OBJECTS

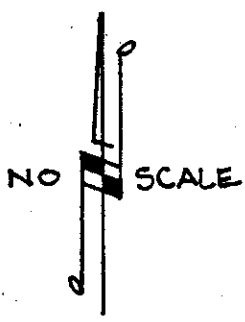
	FOUND	SET	
	OLD HEALED BLAZE	B T	
KIND	WHITE OAK	WHITE OAK	
SIZE	15"	15"	
BEARING	N. 66° 40' E. 29.7'	S. 15° 50' E. 29.9'	
DISTANCE	30.0'	29.9'	
BT TAG POSTED	YES	YES	



FOUND OLD HEALED BLAZE ON 15" DIA WHITE OAK (WAS 4") 3' ABOVE GROUND SURFACE.



FOUND 3/4" (INNER DIA.) IRON PIPE 9" BELOW GROUND SURFACE IN EAST/WEST RUNNING FENCE. DROVE 2" (INNER DIA.) IRON PIPE, 30" LONG, OVER SAID PIPE AND SET 3" DIA. BRASS CAP (SEE DIAGRAM) ON TOP. CAP IS AT GROUND SURFACE.



BLAZED & SCRIBED "BT" AT BREAST HEIGHT ON 15" DIA. WHITE OAK.

REGISTERED PROFESSIONAL LAND SURVEYOR
John Rinaldi Jr.
OREGON JULY 15, 1983
JOHN RINALDI, JR.
2056