

## CORNER FILE TRACKING

F:\Survey\Corners\Misc\Filetrac.doc  
8/11/97

<b>CORNER NUMBER</b>
<b>115200540</b>

STEP	HISTORY()	RESTORATION()
Form Prepared, DB	2/5/98	2/5/98
Field Inspection, DB	—	—
Form Checked, DB	2/9/98	2/9/98
Form Edited, DB	"	"
Form Signed, DB	—	"
Authorize Payment, DB	—	—
Archive Digital Files	2/9/98	2/9/98
Collect Documents	"	"
Copy For Filming	"	"
Filmed	6/30/98	6/30/98
Scanned (Archived), DB	7/15/98	7/15/98
Indexed		
Update Database		
Filed, DB		

(DB) = Entry needed in database (Access).

**COMMENTS:**

CORNER HISTORY		T 11 S, R 5 W		SECTION 7 D.L.C.		CORNER E 14 CORNER		# 200540
NO.	DATE	SOURCE	SURVEYOR	MONUMENTS AND ACCESSORIES		COMMENTS		
1	8/12/1852	ORIG. GLO	GEORGE W. HYDE	SET POST @ 2 BT'S, MEAS TO FACE				1
2	8/12/1917	CS # 594 <sup>MST</sup> <sub>RS</sub>	W. C. GALLOWAY	FND BOTH BT'S, SE - STONE @ 2 NEW BT'S, FB 22 / BACK LEAF				2 3
3	"	OLD COR. REST. Bk. NO. 1 PG. 125	" "	SAME INFO AS REL. [02]				4 5
4	-	REST. 699		TRANS. COPY OF REC [03] + MAP CONTAIN E+G				6 7
5	8/17/1917	CS # 594 MAP	W. C. GALLOWAY	STONE @ 4 BT'S				8 9
6	-	CS # 1130 NOTES	WALTER W. LARSEN	STONE, FB 52/13				10 11
7	8/17/1917	MAP NO. 11-5-0003 4	W. C. GALLOWAY	1/2" PIPE @ 2 BT'S				12 13
8	10/1978	STARKER FORESTS SECTION MAP	STARKER FORESTS	1/2" PIPE, STAMPE (DIFF. SIZE) + 4 BT'S (DIFF. MEAS. ON 2)				14 15
9	7/22/1982	" "	" "	" " "				16 17
10	8/26/1997	CS # 9256	JIM PETERSON	FND 1/2" PIPE + 2 BT'S				18 19
						11/15/98		20 21 22 23 24 25 26 27 28 29 30 31

1-125  
6997C

C.S. 259

1/4 sec. cor. between secs. 7 & 8 T. 11 S. R. 5 W.

Set a stone 5" x 10" x 8"

Oak 14" in dia. bears S. 87° E. 1.322 chs. std. dead.

" 6" " " " N. 6° W. .63 " " "

Mkd. Fir 15" " " " N. 55° E. .105 "

" " 14" " " " S. 84° W. .061 "

C.S. #88 cont.

Aug. 14, 1917.

Most west S.W. corner of Wm. McCullough D.L.C. 42 T. 11-7.  
Set 1/2" x 2 1/2" x 20" iron bar

Set from fir 40" N. 87° 30' E. 3.79 chs. stump

Fir 10" in dia. bears N. 41° E. .247 chs.

" 8" " " " N. 23° W. .278 "

Witnesses John E. Thompson & Victor Plunket July 25, 1917.

Interior Cor. of Wm. McCullough D.L.C. 42 T. 11-7.  
Set 1/2" x 2 1/2" x 20" iron bar

Set from Fir stump N. 85° E. .89 chs.

Oak 9" in dia. bears N. 52° 40' E. .308 chs.

Fir 18" " " " S. 26° 20' E. .906 "

Witnesses W. H. Price and Edd. Davis. July 13, 1917.

Most south S.W. corner of Wm. McCullough D.L.C. #42 T. 11-7.  
Set 1/2" x 2 1/2" x 18" iron bar

Set from fir stump 42" N. 12° 15' E. 1.52 chs.  
Found rock in place for corner.

Fir 13" in dia. bears N. 65° 30' E. .234 chs.

" 16" " " " S. 41° E. .231 "

Witnesses W. H. Price and Edd. Davis July 13, 1917.

$\frac{1}{4}$ -Section corner between sections 7 and 8, Twp. 11 S., R. 5 W.

699

Reestablishment by W. C. Galloway

August 14, 1917

Set a stone 5" x 10" x 8"

Oak 14" in diam bears S 87° E.

1.322 chains(std.dead)

Oak 6" in diam bears N 6° W

.63 chains(std.dead)

Mkd.Fir 15" in diam bears N 55° E

.105 chains

Mkd.Fir 14" in diam bears S 84°W

.061 chains

# SECTION PLAT SHEET

OWNER Stanker Forests

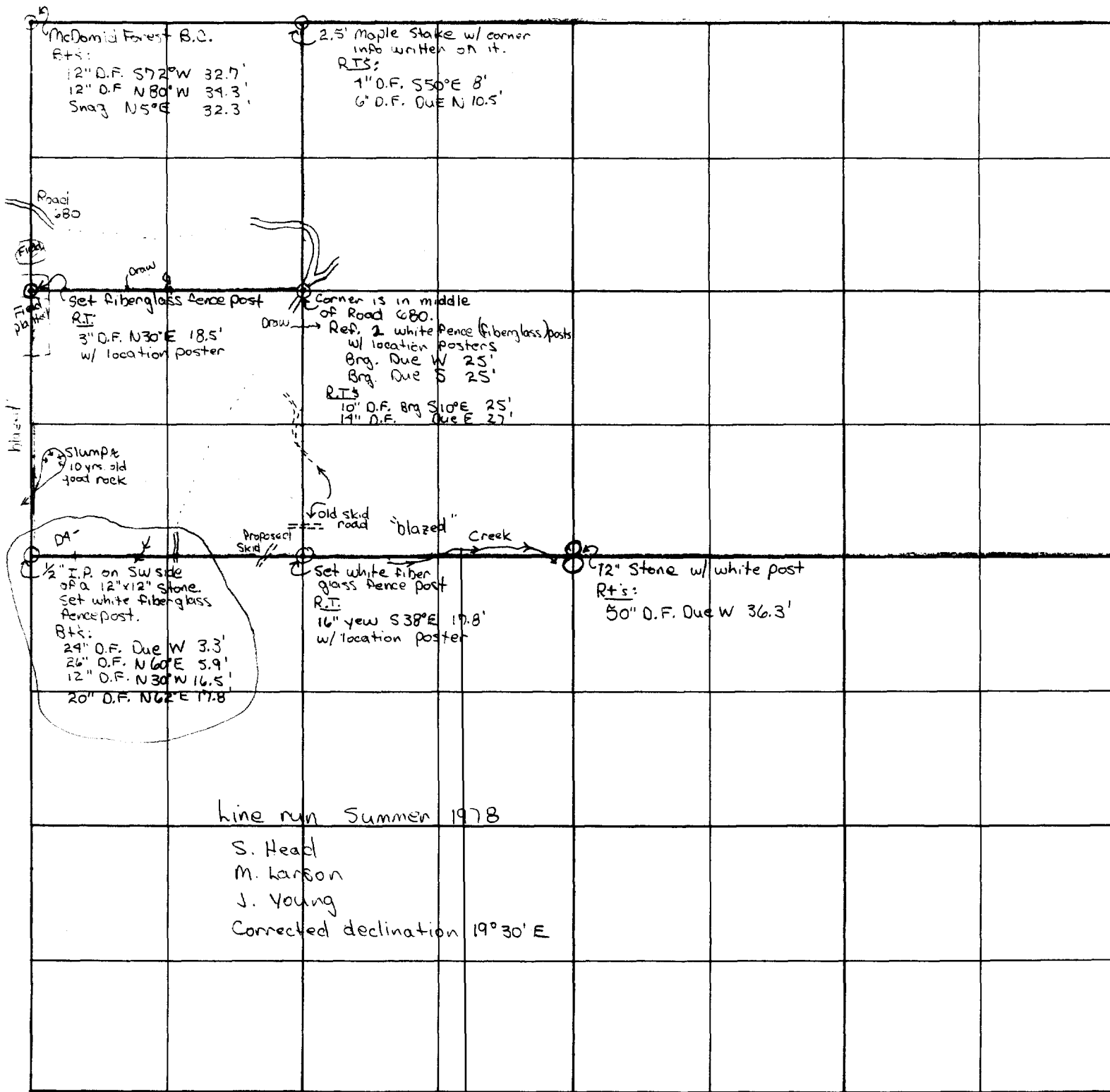
DATE 10/78

SECTION 8 TOWNSHIP 11 S

RANGE 5 W

COUNTY Benton STATE Oregon

SCALE 8" = 1 mile



SECTION PLAT SHEET

OWNER Starker Forests / OSU

DATE 22 July 82

SECTION 8

TOWNSHIP 11S

RANGE SW

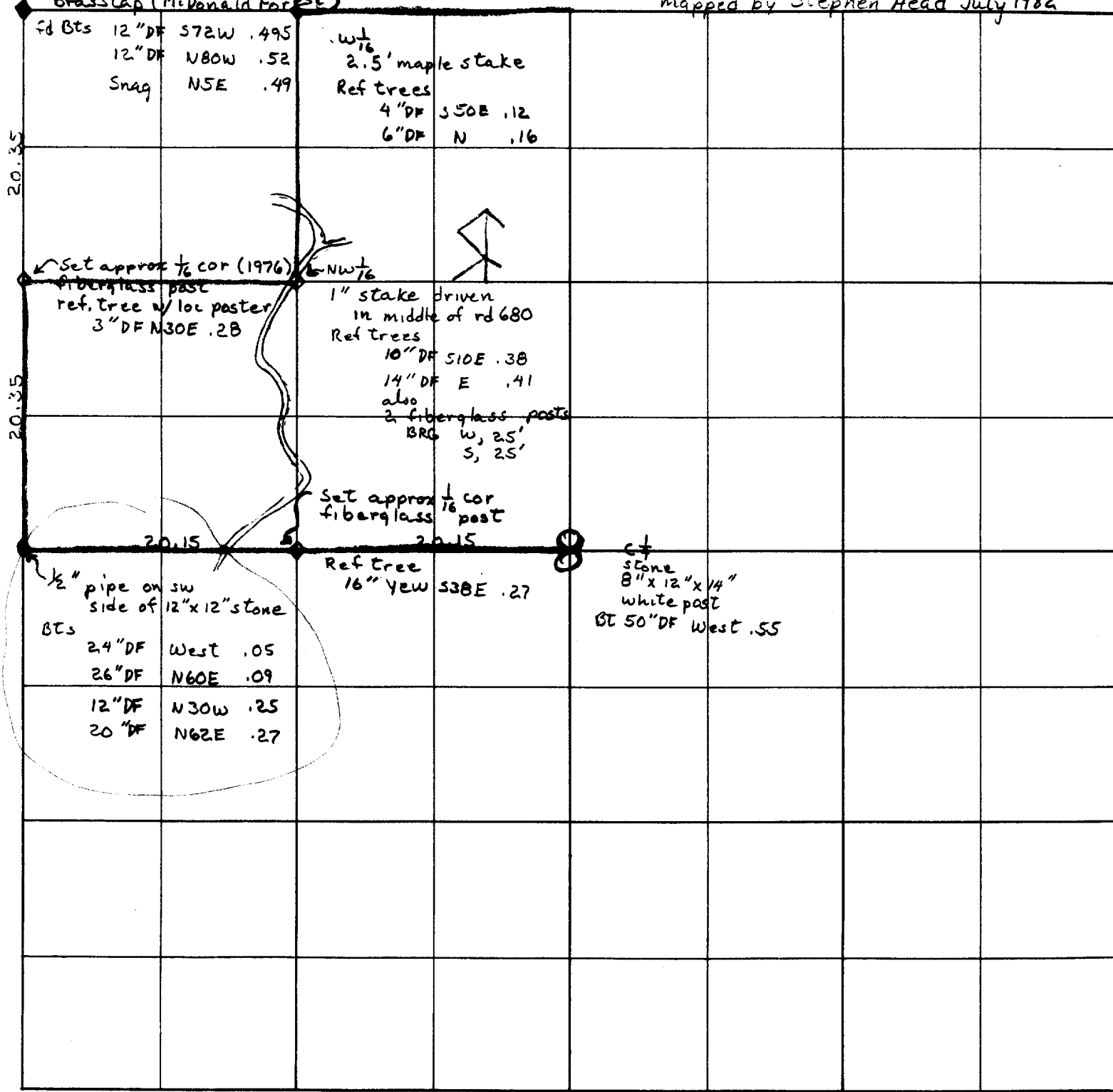
COUNTY Benton

STATE Oregon

SCALE 1" = 10 chains

Brass Cap (McDonald Forest)

lines run Sept 1976  
mapped by Stephen Head July 1982



DATE 02/05/1998

TOWNSHIP 11 SOUTH, RANGE 5 WEST, WILLAMETTE MERIDIAN; SECTION 07 CORNER E 1/4  
DONATION LAND CLAIM \_\_\_\_\_ CORNER \_\_\_\_\_

**COMMON CORNER(S):**

THE WEST QUARTER CORNER OF SECTION 8.

**CORNER RECORDS (PREVIOUS RENEWALS, SURVEYS, ETC.)**

- [01] ORIGINAL GLO SURVEY BY GEORGE W. HYDE, DATED AUGUST 12, 1852. *SET POST WITH TWO BEARING TREES, MEASURED TO THE FACE.*
- [02] NOTES OF COUNTY SURVEY NO. 594 (FIELD BOOK NO. 22, BACK LEAF) BY W.C. GALLOWAY, DATED AUGUST 14, 1917. *FOUND BOTH BEARING TREES, SET STONE WITH TWO NEW BEARING TREES.*
- [03] OLD CORNER RESTORATION BOOK NO. 1, PAGE 125 BY W.C. GALLOWAY, DATED AUGUST 14, 1917. *SAME INFORMATION AS RECORD [02].*
- [04] CORNER RESTORATION NO. 699. *TRANSCRIBED COPY OF RECORD [03] AND MAY CONTAIN ERRORS AND OMISSIONS.*
- [05] MAP OF COUNTY SURVEY NO. 594, BY W.C. GALLOWAY, DATED AUGUST 17, 1917. *STONE WITH FOUR BEARING TREES.*
- [06] NOTES OF COUNTY SURVEY NO. 1130 (FIELD BOOK) NO. 52, PAGE 13) BY WALTER W. LARSEN (NO DATE GIVEN). *STONE.*
- [07] MAP NO. 11-5-00034 BY W.C. GALLOWAY, DATED AUGUST 17, 1917. *PIPE WITH TWO BEARING TREES.*
- [08] STARKER FORESTS SECTION MAP, BY STARKER FORESTS, DATED OCTOBER, 1978. *PIPE, STONE (DIFFERENT SIZE) AND FOUR BEARING TREES (DIFFERENT MEASUREMENT ON 2).*
- [09] STARKER FORESTS SECTION MAP, BY STARKER FORESTS, DATED JULY 22, 1982. *PIPE & STONE.*
- [10] COUNTY SURVEY NO. 9256 BY JIM PETERSON, DATED AUGUST 26, 1997. *FOUND IRON PIPE AND TWO BEARING TREES.*

**COMMENTS/LOCATION/ETC:**

**HORIZONTAL AND VERTICAL INFORMATION:**

**HORIZONTAL DATUM:**

LATITUDE:  
LONGITUDE:

**VERTICAL DATUM:**

ELLIPSOID ELEVATION:  
ORTHOMETRIC ELEVATION:  
GEOID SEPERATION:

**STATE PLANE COORDINATE SYSTEM:**

N (Y):  
E (X):

SCALE FACTOR:  
COMBINED FACTOR:  
CONVERGENCE:

**NOTES:**

THIS IS A MICROSOFT WORD (VERSION 6.0) DOCUMENT NAMED "15200540" CREATED FROM A BOILER PLATE DOCUMENT NAMED "HISTORY", WHICH HAS A STYLESHEET NAMED "CORNER" ATTACHED TO IT.  
INFORMATION IN ***BOLD ITALICS*** IS COUNTY STAFFS' INTERPRETATION OF THE RECORD.

**FIRM/AGENCY:** BENTON COUNTY SURVEYOR'S OFFICE  
**ADDRESS:** 360 S.W. AVERY AVE. CORVALLIS OR 97333; PH. 757-6821  
**RESEARCH BY:** CURTIS J. LIESENFELT  
**DATA ENTRY BY:** ROSE LINDGREN

SEE CORNER HISTORY FORM FOR RECORDS ETC.

CORNER RESTORATION FIELD BOOK NUMBER 16 PAGE(S) 75,76 DATE 02/05/1998  
 TOWNSHIP 11 SOUTH, RANGE 5 WEST, WILLAMETTE MERIDIAN; SECTION 7 CORNER E 1/4  
 DONATION LAND CLAIM \_\_\_\_\_ CORNER \_\_\_\_\_  
 CONDITION REPORT \_\_\_\_\_; REFERENCED OUT \_\_\_\_\_; RENEWED XX; SURVEYED IN \_\_\_\_\_

**LOCATION AND COMMENTS:**

THE CORNER IS LOCATED ON A HEAVILY WOODED, MODERATELY SLOPING, SOUTHWESTERLY FACING HILLSIDE, APPROXIMATELY 60 FEET NORTH-NORTHEASTERLY FROM ABOUT A 4' DOUGLAS FIR WITH A BROKEN TOP. TO REACH TAKE OAK CREEK DRIVE TO THE ORANGE GATE AT THE SOUTH BOUNDARY OF McDONALD FOREST AND THE START OF ROAD NO. 600. FOLLOW ROAD NO. 600 NORTHEASTERLY FOR ABOUT 1 2/3 MILES TO ROAD NO. 680. TURN LEFT ON ROAD NO. 680 AND FOLLOW PAST ROAD NO. 681 (0.25 MILES) FOR 0.54 MILES TO THE UPRUTE TRAILHEAD. FOLLOW UPRUTE TRAIL DOWNHILL PAST WOODEN BRIDGE OVER CREEK (250') FOR 325', LEAVE TRAIL AND FOLLOW FLAGGED TRAIL NORTHWESTERLY FOR ABOUT 400' (OVER A RIDGE) TO THE CORNER. IT MAY BE OKAY FOR PREMARKING AND GPS CONTROL.

**MONUMENTS AND ACCESSORIES FOUND (CONDITION AND SOURCE):**

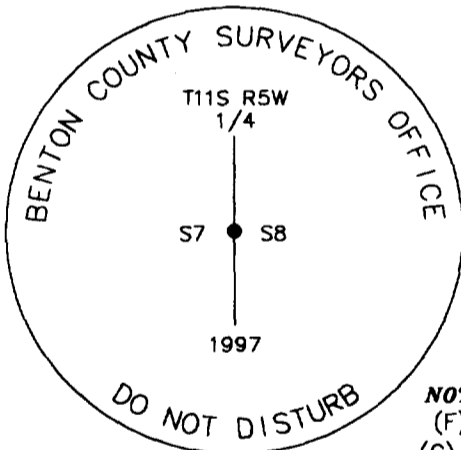
- FOUND: 1/2" X 30" INSIDE DIAMETER IRON PIPE FOR THE CORNER (1/2" PIPE AS PER RECORD [07]).
- FOUND: PIECES OF OAK AT APPROXIMATE RECORD [01] BEARING (SE) AND DISTANCE, DID NOT PAINT OR TAG.
- FOUND: 11" X 9" X 5" STONE LAYING FLAT APPROXIMATELY 1.5' SOUTH-SOUTHEASTERLY OF THE 1/2" PIPE. THE STONE IS MARKED WITH A "X" CUT ON ONE END, THE BOTTOM HALF OF A "C" AND AN "S" ON ONE SIDE (STONE 5" X 8" X 10" AS PER RECORD [02].)
- FOUND: 25" DEAD DOUGLAS FIR SNAG WITH A HEALED FACE AND BARK SCRIBED "MR", BEARS N 62° 15' E~7.17' (15" FIR, N 55° E 6.93' AS PER RECORDS [02], [03], [05], & [07]; 26" D. F., N 60° E~5.9' AS PER RECORD [08]; 5.94' AS PER RECORD [09]; 34" FIR SNAG AS PER RECORD [10]). SET 8" SPIKE AND BRASS WASHER IN THE SOUTHEASTERLY BASE.
- FOUND: 25" DEAD DOUGLAS FIR SNAG WITH CRUISER MARKS IN THE BARK AND A HEALED FACE, BEARS WEST~ 4.20' (14" FIR, S 84° W~ 4.03' AS PER RECORDS [02],[03],[05] & [07]; 24" DOUGLAS FIR, WEST~ 3.3' AS PER RECORDS [08] & [09], 30" FIR SNAG AS PER RECORD [10]). SET 6" SPIKE AND BRASS WASHER IN THE SOUTHWESTERLY BASE.
- FOUND: 16" DEAD TRUE FIR (UNMARKED), BEARS N 38° 20' W~17.12' (12" DOUGLAS FIR, N 30° W~16.5' AS PER RECORDS [08] & [09]). SET 6" SPIKE AND BRASS WASHER IN THE NORTHEASTERLY BASE.
- FOUND: 20" DOUGLAS FIR STUMP (MOSTLY ROTTED) BEARS N 68° E~18.5' (20" DOUGLAS FIR, N 62° E~17.8' AS PER RECORD [08]; 17.82' AS PER RECORD [09]). DID NOT PAINT.

NO OTHER EVIDENCE WAS RECOVERABLE.

**MONUMENT SET (PROCEDURES AND DESCRIPTION):**

SET: 2" INSIDE DIAMETER BY 36" LONG IRON PIPE WITH A 3 1/4" BENTON COUNTY BRASS CAP, STAMPED AS SHOWN, CENTERED OVER THE RECOVERED 1/2" PIPE. BURIED THE RECOVERED STONE HORIZONTALLY ALONG THE SOUTHWESTERLY SIDE OF THE NEW MONUMENT

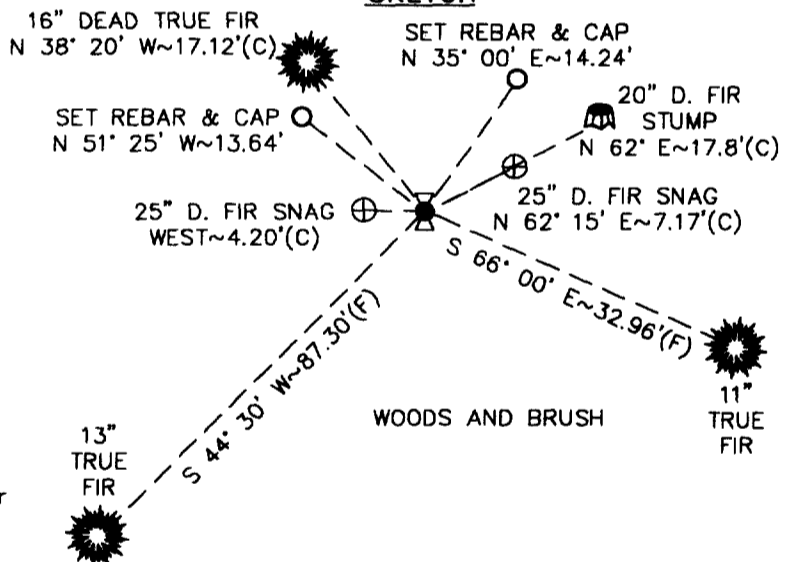
**MONUMENT DETAIL**



3 1/4" BRASS CAP

NOT TO SCALE  
 (F) = to face  
 (C) = to center

**SKETCH**



**NEW ACCESSORIES:**

- A 11" TRUE FIR, BEARS S 66° 00' E~32.96', FACED AND SCRIBED "1/4s8BT".
- A 13" TRUE FIR BEARS S 44° 30' W~87.30', FACED AND SCRIBED "1/4s7BT".
- SET: REBAR (SEE NOTES) 3" BELOW GROUND SURFACE, BEARS N 35° 00' E~14.24'.
- SET: REBAR (SEE NOTES) 2" BELOW GROUND SURFACE, BEARS N 51° 25' W~13.64'.
- SET: ORANGE FIBERGLASS "SURVEY MARKER" POST 1' SOUTHERLY.

**NOTES:**

COMPASS DECLINATION IS 20° EAST. ALL MEASURED DISTANCES AND BEARINGS ARE TO THE CENTER OF THE OBJECT, UNLESS OTHERWISE NOTED. ALL BEARING TREES ARE PAINTED AND HAVE A B.T. TAG ATTACHED, FACING THE CORNER UNLESS OTHERWISE NOTED. ALL NEW BEARING TREES HAVE A PLASTIC WASHER (STAMPED "BENTON COUNTY SURVEYOR CORNER RESTORATION") ATTACHED (BY ALUMINUM NAIL) TO THE FACE, BELOW THE "BT" FOR DISTANCE AND ANGLE MEASUREMENT UNLESS OTHERWISE NOTED. ALL SET REBAR ARE 5/8" X 30" AND HAVE A YELLOW PLASTIC CAP (STAMPED "BENTON COUNTY SURVEYOR") ATTACHED TO THE TOP.

THIS DOCUMENT WAS NAMED AND CREATED IN A MANNER SIMILAR TO THE HISTORY FORM. THE NAME OF THE BOILER PLATE IS "MONUMENT". THE BORDER, STAMP AND SKETCH ARE FROM AUTOCAD RELEASE 12.

THIS RESTORATION WAS PERFORMED AT THE DIRECTION AND APPROVAL OF THE BENTON COUNTY/DEPUTY COUNTY SURVEYOR. *RW*

**FIRM/AGENCY:** BENTON COUNTY SURVEYOR'S OFFICE  
**ADDRESS:** 360 S.W. AVERY AVE. CORVALLIS OR 97333; PH. 757-6821  
**SURVEYOR:** CURTIS J. LIESENFELT  
**SURVEY CREW:** CHRIS CARMAN

REGISTERED  
 PROFESSIONAL  
 LAND SURVEYOR

*Curtis J. Liesenfelt*

OREGON  
 JULY 17, 1986  
 CURTIS J. LIESENFELT  
 2213

LICENSE RENEWAL 12/31/1998