

C.S. 270
Burt Wilkes

Adrian Seits

Sec. Cor. Secs. 28, 29, 32 & 33 T.11 S. R. 5 W Oct. 1940
Set a Quart Bottle 10" under the surface of ground for cor. from which
A 3/4" pipe on W line of §.55 bears N 97°20' W 1.268 chs. dist
A 3/4" " " " " " " " " " " " " " " 370°20' W 7.736 " " "
A 3/4" " " the N.E. Cor. of C1. #57 " " N 25°48' W 13.938 " " "
This corner is reestablished by ties shown in Govt. notes of
survey of Alfred Witham D.L.C. #55. Used angles shown & proportional
distances using length of West line of claim for basis

Same as above 1/4 sec. cor. between Secs. 29 & 32 - T.11 S. R. 5 W Oct. 1940

Set a Quart bottle 12" under the surface of ground for Corner from which
An Oak 36" in dia. bears N. 34°32' E. 8.342 chains on 4° slope Hgt. 8322
An Apple 12" " " " N. 10°24' W. 8.237 " " " + 4°50' slope " " = 8.208
This corner set on line midway between section corners.

C.S. 208 Cont

W.C. Galloway
Adrian Seits

S.W. Cor. Wm Bennet C1. #50 - T.13 S. R. 6 W.

Set a plow share for Cor. Original Corner, from which (Both oak B.T.'s down)
Mark Fir 40" in dia., bears N. 7° W. 0.221 chs. dist. spike in E. face
" Fir 21" " " " " " " " S. 56° E. 0.189 " " " " " NE " "
" Fir 23" " " " " " " " " S. 30° W. 0.190 " " " " " SE " "
April 19, 1940 " Chinkapin 11" " " " " " " " N. 70°40' W. 0.227 " " " " " Center of tree.

C.S. No. 79
W.C. Galloway
Adrian Seits
July 9, 1940

1/4 sec. Cor. between Secs. 27 & 28 T.10 S. R. 4 W.

Set 9t. bottle under stone 6" x 10" x 11" for corner from which High on stone
Oak 24" in dia. bears S. 65° E. 1.16 chs. dist Stump
" 15" " " " " " " " S. 9° W 0.55 " " " " " " " " "
Mark " 5" " " " " " " " " N. 86° W 0.046 " " " " " " " " "

As above

The S.W. corner of John J. Haskins D.L.C. No. 71 T.10 S., R. 4 W.

Set a 1/2" Galv. Pipe for Corner from which
Double Oak 16" at bottom bears N. 87° W. 0.238 chs. dist
" " " 15" " " " " " " " West 0.65 " " "
An " " 9" in dia " " " N. 8°30' W. 0.207 " " "

C.S. # 337
W.C. Galloway
Adrian Seits
Feb. 20, 1940

Most West S.W. corner of David Carson D.L.C. No. 45 T.10 S. R. 5 W. S.E. C1. 49

Set a 1 1/4" galv. pipe proportionally dist. from NW. cor. of C1. #45 & N.E. cor. of C1. #46
From Corner X
An Oak 11" in dia. bears S. 20°30' W. 0.380 chs. dist. {Original stone corner gone

C.S. # 270 cont
W.C. Galloway
Adrian Seits
May 5, 1940

N. W. corner of Joseph P. Friedly D.L.C. No. 62 T.11 S. R. 5 W.

Set a 1 1/4" X 24" Galv. Pipe for corner from which
Oak 24" in dia. bears N. 13°55' W. 2.570 chs. std.
" 25" " " " " " " " S. 36°00' E 1.560 chs on + 4° slope angle wood dist = 1.556
" 25" " " " " " " " " S. 0° 13' W 2.157 " " " " " " " " = 2.150
N.W. tree down - S.E. Stump out.

C.S. W.C. Adri D.C. Som C.S. W.C. Adri Mo J. C.S. Ad C.S. Jo S. C. B. Sa R. Fo by W. Adria Ref. Mo

$\frac{1}{4}$ -Section corner between sections 29 and 32, Twp. 11 S., R. 5 W.

734

Reestablishment by W. C. Galloway

October 1940

Set a quart bottle 12" under the surface of ground

Oak 36" in diam bears N 34° 32' E

8.342 chains

Apple 12" in diam bears N 10° 24' W

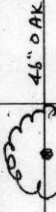
8.237 chains

This corner set on line midway between section corners

8/45

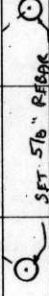
10/8/90; C.I.T. MEAS. KERN DKM2-A, QMS03, SILVA COMP.

20° E. DEC. CLEAR, COOL



SET 5/8\"/>

@ CAP



@ CAP

THE COR. IS LOCATED IN AN OPEN FIELD TO 370' SWLY FROM A N-S WOV. + B-W FENCE + 65' SWLY FROM A SMALL CREEK. IT IS GREAT FOR PREMARKING + GPS CONTROL.

T115 R5W

CAP

STAMPINGS

1/4 589

532

1990

T115 R5W SEC. 29 S 1/4

FND. BROWN GLASS QUART BOTTLE @ B.G.S. (COR REST. NO 734)

" AM PAK 46" DIA @ AN UPPER + LOWER HEALED FACE

BEARS N 37° E - 549.23' (N 34° 32' E - 549.23' COR. REST. MAP NO.

11-5-0027 NO. 734). SET A PK NAIL + B.C.B.W. IN THE NW 1/4 BASE

SET A B.T. TAG ON THE SW 1/4 FACE.

NO OTHER RECORD BEARING OBJECTS WERE RECOVERED

SET: 2" 1.0 x 36" LONG IRON PIPE @ A 3 1/4" BEN. CO. B.C. STAMPED

AS SHOWN 18" B.G.S. IN THE SAME POSITION AS THE BOTTLE

BURIED THE BOTTLE HORIZ. ALONG THE SE SIDE OF

THE NEW MON.

" 5/8" x 30" REBAR @ A Y.P.C. MKD. "BENTON COUNTY SUR-

VEYOR" 18" B.G.S. BEARS N 54° W - 40.17'

" 5/8" x 30" REBAR @ A Y.P.C. MKD. "BENTON COUNTY SUR-

VEYOR" 18" B.G.S. BEARS S 54° E - 53.92'

" 5/8" x 30" REBAR @ A Y.P.C. MKD. "BENTON COUNTY SURVEYOR"

18" B.G.S. BEARS S 41° W - 49.75'

" ORANGE FIBER GLASS "SURVEY MARKER" POST 1' S 1/4

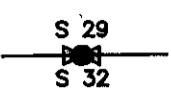
2.53 F14

2.32 S 1/4

SECTION 29 TOWNSHIP 11 S RANGE 5 W DLC _____ CORNER S 1/4
 DATE 10/8/90 CORNER RESTORATION FIELD BOOK NUMBER 8 PAGE 45

CORNER DESIGNATION:

THE QUARTER CORNER COMMON TO SECTIONS
 29 AND 32, IN T 11 S, R 5 W, WILLAMETTE
 MERIDIAN.



- _____ CONDITION REPORT ONLY
- _____ REFERENCED OUT
- XX RENEWED
- _____ SURVEYED IN

LOCATION AND COMMENTS:

THE CORNER IS LOCATED IN AN OPEN FIELD, 370 FEET WESTERLY FROM A NORTH-SOUTH WOVEN AND BARBED WIRE FENCE AND APPROXIMATELY 65 FEET SOUTHWESTERLY FROM A SMALL CREEK.

PREVIOUS RENEWALS/SURVEYS, ETC.:

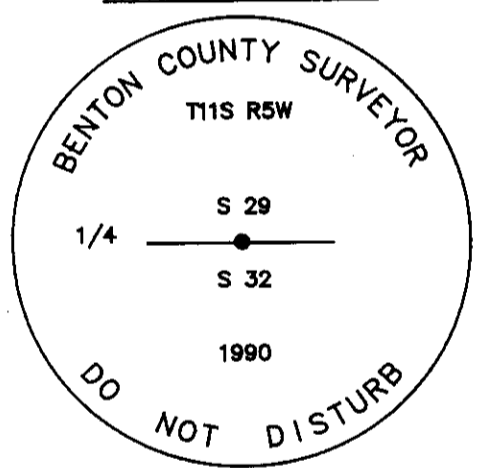
ORIGINAL GLO SURVEY BY GEORGE W. HYDE IN 1852.
 CORNER RESTORATION NO. 734 BY W.C. GALLOWAY IN OCTOBER OF 1940.
 COUNTY SURVEY NO. 1498 BY W.C. GALLOWAY ON OCTOBER 12, 1940.

MONUMENTS AND ACCESSORIES FOUND (CONDITION AND SOURCE):

FOUND: A BROWN GLASS QUART BOTTLE 8" BELOW GROUND SURFACE (CORNER RESTORATION NO. 734).
 FOUND: AN OAK 46" IN DIAMETER WITH AN UPPER AND A LOWER HEALED FACE, BEARS N 37° E 549.23 FEET
 (N 34° 32' E 549.23 FEET MAP NO. 11-5-00027). SET A PK NAIL AND B.C.B.W. IN THE NORTHWESTERLY BASE.
 SET A B.T. TAG ON THE SOUTHWESTERLY FACE.

NO OTHER RECORD BEARING OBJECTS WERE RECOVERED.

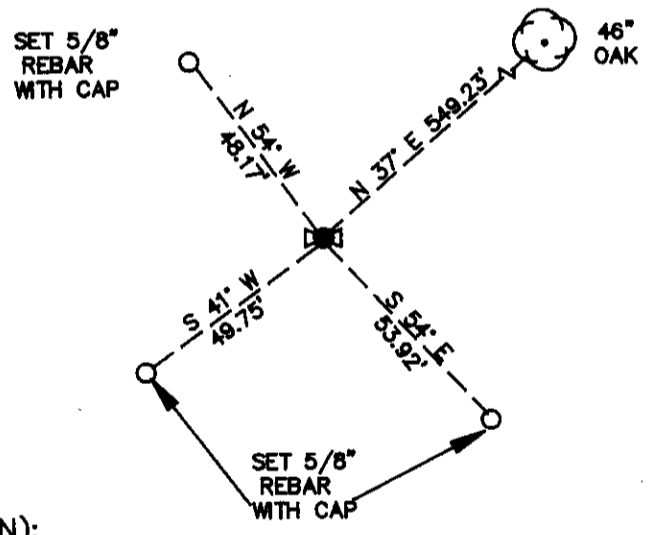
MONUMENT DETAIL



3 1/4" BRASS CAP



SKETCH



MONUMENT SET (PROCEDURES AND DESCRIPTION):

SET: 2" INSIDE DIAMETER X 36" LONG IRON PIPE WITH A 3 1/4" BENTON COUNTY BRASS CAP STAMPED AS SHOWN 18" BELOW GROUND SURFACE IN THE SAME POSITION AS THE BOTTLE. BURIED THE BOTTLE HORIZONTALLY ALONG THE SOUTHEAST SIDE OF THE NEW MONUMENT.

NEW ACCESSORIES:

- SET: 5/8" X 30" REBAR WITH A YELLOW PLASTIC CAP MARKED "BENTON COUNTY SURVEYOR" 18" BELOW GROUND SURFACE, BEARS N 54° W 48.17 FEET.
- SET: 5/8" X 30" REBAR WITH A YELLOW PLASTIC CAP MARKED "BENTON COUNTY SURVEYOR" 18" BELOW GROUND SURFACE, BEARS S 54° E 53.92 FEET.
- SET: 5/8" X 30" REBAR WITH A YELLOW PLASTIC CAP MARKED "BENTON COUNTY SURVEYOR" 16" BELOW GROUND SURFACE, BEARS S 41° W 49.75 FEET.
- SET: ORANGE FIBERGLASS "SURVEY MARKER" POST 1 FOOT SOUTHERLY.

NOTES:

B.C.B.W. IS A BRASS WASHER STAMPED "BENTON COUNTY SURVEYOR". COMPASS DECLINATION IS 20° EAST. ALL MEASURED DISTANCES AND COMPASS BEARINGS ARE TO THE CENTER OF THE OBJECT, UNLESS OTHERWISE NOTED.

FIRM/AGENCY: BENTON COUNTY PUBLIC WORKS
 ADDRESS: 360 S.W. AVERY AVE. CORVALLIS OR. 97333; PH. 757-6821
 PARTY CHIEF: CURTIS J. LIESENFELT
 CREW: MARK E. ANDERSON
 WITNESS:

REGISTERED
 PROFESSIONAL
 LAND SURVEYOR

Danna L. Fehrenbacher
 OREGON
 JULY 16, 1982
 DANNA L. FEHRENBACHER
 1995