

Section 9 Township 11S Range 5W
County BENTON Date JUNE 21, 1991

CORNER DESIGNATION

(UNRECORDED) S 1/4 SEC. 9
AS PER DEARING
SURVEY

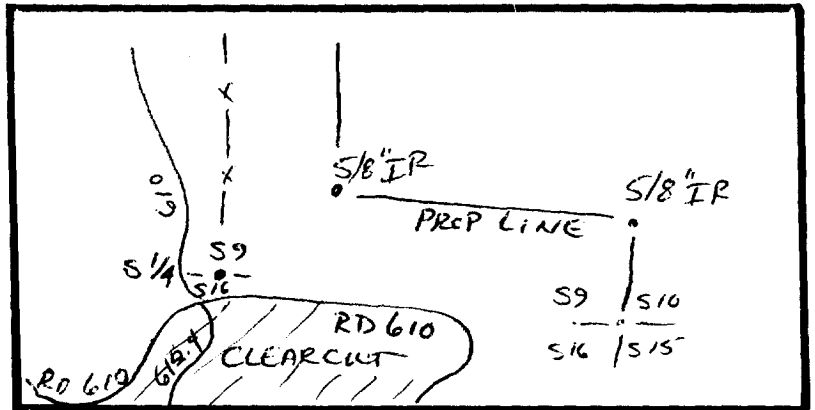
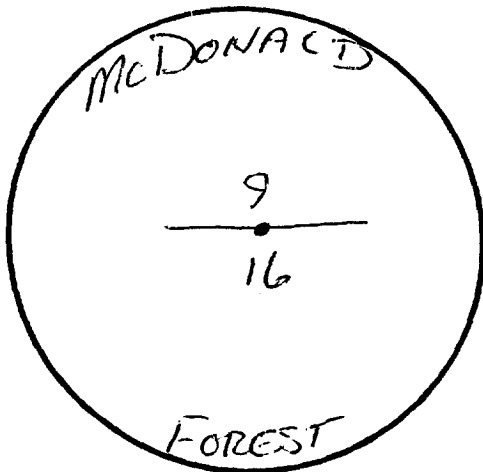
Previous Renewals/Surveys, etc. DAVID EVANS & ASSOCIATES, INC.
LOT LINE ADJUSTMENT FOR MCLANE FISHER; PROPERTY
LINE INSPECTION FIELDBOOK DATED 6/91

Monument(s) & Accessories Found: (Condition and Source)

2" McDONALD FOREST BRASS CAP, NO ACCESSORIES FOUND

Monument Detail

Sketch



MONUMENT AND ACCESSORY CONDITION (GOOD CONDITION)

MONUMENT IS UP ABOUT 1/2 FT. AND ABOUT
10' NORTH OF THE ROAD SHOULDER

Location & Comments

FOLLOW RD 610 Compass Declination 20
FOR 0.6 MILES
TO THE CORNER
WHICH IS ABOUT
10 FT NORTH OF THE
RD NEAR THE FENCE.

OREGON STATE UNIVERSITY
RESEARCH FORESTS CORNER CONDITION REPORT

CORNER NO.
115360500

Section 9 Township 11S Range 5W
County BENTON Date JULY 21, 1993

CORNER DESIGNATION

E 1/4 BETWEEN SECTIONS 9 & 16

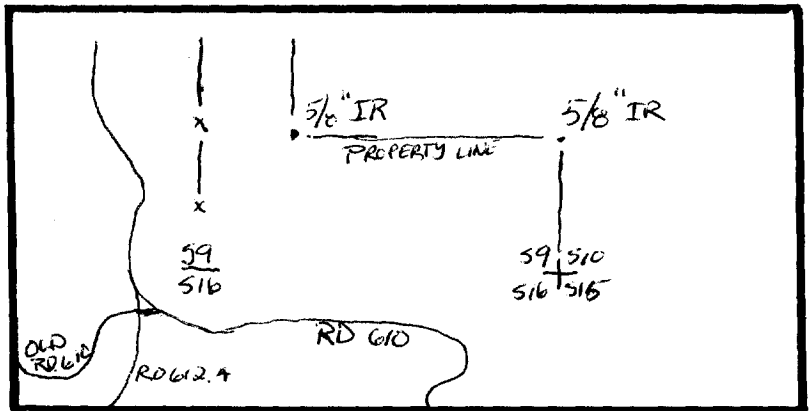
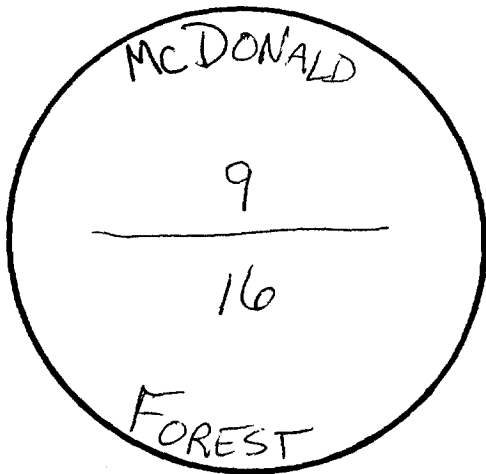
Previous Renewals/Surveys, etc. DAVID EVANS & ASSOCIATES, INC.
LOT LINE ADJUSTMENT FOR McLANE FISHER; PROPERTY
LINE INSPECTION FIELDBOOK DATED 6/91

Monument(s) & Accessories Found: (Condition and Source)

1" IRON PIPE WITH 3" McDONALD FOREST BRASS CAP,
NO ACCESSORIES FOUND

Monument Detail

Sketch



MONUMENT AND ACCESSORY CONDITION

CAP IS APPROX. 1/2 FT ABOVE GROUND SURFACE, ABOUT 10'
NORTH OF THE ROAD SHOULDER.

Location & Comments

Compass Declination _____

Charles E. Munn 7/21/93