

C.S. 54
by W.C. Galloway

1/4 Sec. Cor. bet. Secs. 18 & 19, T. 14 S. R. 7 W.
Set 1" x 40" shaft, found original stake
Cedar 36" in dia. bears N. 45° W. .60, Nail N. 38° 49' W. .59 +
" 36" " " S. 25° W. .095, screw S. 5° 20' W. .090
Lower near corner of stone S. 55° 45' W. .0585

C.S. 105
by W.C. Galloway
K.M. Patterson chn.
Apr. 16, 1946

S.W. Corner of John Robinson D.L.C. #44 T. 11 S. R. 5 W.
Set a Stone 6" x 10" x 16"
Oak 24" in dia. bears S. 52° 30' E. 2.52 chn. Std.
" 24" " " S. 31° 30' W. 2.95 " " dead.
Mkd. " 20" " " S. 11° 20' W. .769 "

"
Apr. 17, 1946

Corner to section 14, 15, 22 & 23 T. 11 S. R. 5 W.
Set 1 1/2" Pipe, 24" long
Oak Stump N. 32° E. .53
" " S. 37° E. .43 1/4 blazes
" 40" S. 56 1/2° W. 1.33 lower blaze
" 36" N 70° W. 1.25 " "
Mkd. " 10" in dia. bears N. 28° E. .110
" Fir 5" " " N. 64° E. .177
" " 24" " " S. 35° E. .362
" " 12" " " S. 73° W. .022

"
Martin Beyerlein
April 1946

1/4 Sec. Corner bet. Secs. 22 & 23 T. 11 S. R. 5 W.
Set a flywheel 4" top (9" x 8") bottle in center, 10" under.
" from Oak 16" S. 42° E. .43 chn. lower blaze on stump
" " 20" N. 23° 30' W. 1.05" stump lying down.
Mkd. fir 9" in dia. bears S. 76° E. .147 chn., mark on S.
" " 9" " " S. 23° W. .117 " " " E.
" oak 34" " " S. 69° E. .560 "

C.S. 81 by
W.C.G

Most W. S.W. Cor. of Abner Drumm Cl. 39 T. 11 S. R. 5 W.
Set a 1/2" x 3" x 30" iron bar, set from stone, the most E. NE. cor. of Arnold
Fuller Cl. 38 and north line of Mylie's land which is 10.48 S. 0° 03' W. of 1" pipe,
the most N. NE. cor. of Arnold Fuller Cl. 38.
The old fence referred to in government field notes is N. 47 to .50 chn.

C.S. 81 by
F.M. Wilkes

Most N. N.E. Cor. of Arnold Fuller and ^{Most West} N.W. Cor. of Abner Drumm Cl. 39
1" pipe, set by F. Marion Wilkes about 1913 T. 11 S. R. 5 W.
Anchor post 14" N. 60° E. .195
Spike, N. side of 6" double cottonwood S. 45° W. .855

C. S. # 204
C.C. Hanson DES.
L.A. Wells
Dane Schappert
6. - 48

1/4 Sec. Corner between Sec. 19, Twp 10 S, R. 6 W. & Sec 24, Twp 10 S, R. 7 W.
3/4" Pin
Fir 18" N. 4° 41' E. .803
Fir 26" S. 86° 27' W. .994

$\frac{1}{4}$ -Section corner between sections 22 and 23, Twp. 11 S., R. 5 W.

728

Reestablishment by W. C. Galloway

April 17, 1946

Set a flywheel 4" in top (9" x 8") bottle in center, 10" under surface.

Oak 16" in diam bears 42° E	.43 chains
Oak 20" in diam bears N 23° 30' W	1.05 chains(stump)
Fir 9" in diam bears S 76° E	.147 chains
Fir 9" in diam bears S 23° W	.117 chains
Oak 34" in diam bears S 69° E	.560 chains

Witness Martin Beyerlein

T115 R5W SEC 22 E 17

END: FLYWHEEL 1" IN DIA. X 7" HIGH @ BOTTLE SET IN UPRIGHT

CYR FOR THE COR FIRMLY SET 7" B.C. (COR.

REST. NO. 728)

" A FIR 25" IN DIA. @ A HEALED FACE BEARS

S. 74° E ~ 9.70' (S 76° E ~ 9.70' COR. REST. NO. 728)

SET PK + B.C.B.W. IN SW 1/4 BASE. SET BT. TAG ON NW 1/4 FACE

" AN OAK SNAG 33" IN DIA BEARS S 66° E ~ 37.4'

(S 69° E ~ 36.96' COR. REST. NO. 728). SET BT TAG

ON NW 1/4 FACE.

12" IN DIA.

" A MOSTLY ROTTED FIR STUMP BEARS S 23° W ~ 7.9'

(S 23° W ~ 7.72' COR. REST. NO. 728)

NO OTHER RECORDED BEARING OBJECTS WERE RECOVERED

SET: 2" I.O. X 36" LONG / IRON PIPE @ A 3 1/4" BEN. CO. B.C.

STAMPED AS SHOWN IN THE SAME POSITION AS

THE BOTTLE FOUND IN THE CENTER OF THE

FLYWHEEL BURIED FLYWHEEL Y BOTTLE

ALONG E. SIDE

A FIR 11" IN DIA. BEARS N 65° E ~ 45.94' FACEO

+ SCRIBED " 1/4 S 23° BT" SET PK + B.C.B.W. IN SW 1/4

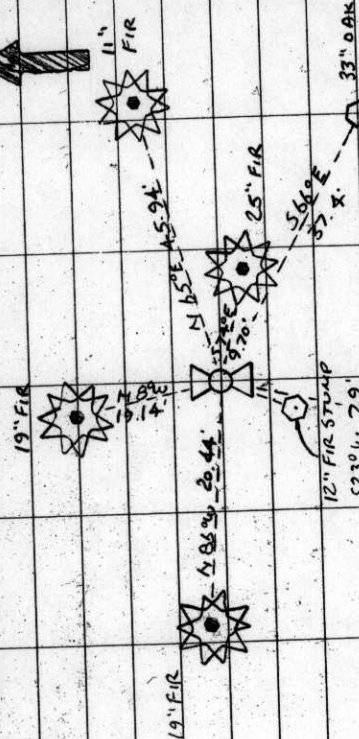
BASE. SET BT TAG ON W 1/4 FACE.

A FIR 15" IN DIA BEARS S 14° W ~ 33.21' FACEO + SCRIBED " 1/4

S 22° BT" SET PK + B.C.B.W. IN NW 1/4 BASE. SET

BT TAG ON NE 1/4 FACE

117190; CTR MBQ, SILVA COMP. 20° E. DEC. P.C., COLO



A FIR 19" IN DIA. BEARS N 8° W ~ 19.14' FACEO + SCRIBED

" 14 S 22° BT" SET PK + B.C.B.W. IN E 1/4 BASE SET B.T.

TAG ON SW 1/4 FACE.

A FIR 19" IN DIA. BEARS S 86° W ~ 20.44' FACEO + SCRIBED

" 14 S 22° BT" SET PK + B.C.B.W. IN NW 1/4 BASE SET B.T.

TAG ON E 1/4 FACE

SET ORANGE FIBERGLASS " SURVEY MARKER" POST 1' 5 1/4

THE COR IS LOCATED 400 ± W 1/4 FROM THE W 1/4 MOST

CITY OF CORVALLIS H2O TANK

IT IS NO GOOD FOR PREMARKING

OR GAS CONTROL

STAMPINGS

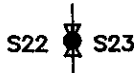
1990

BENTON COUNTY CORNER RESTORATION FORM 115500340 3723

SECTION 22 TOWNSHIP 11 S RANGE 5 W DLC _____ CORNER E 1/4
 DATE 1/17/90 CORNER RESTORATION FIELD BOOK NUMBER 7 PAGE 8

CORNER DESIGNATION:

THE QUARTER CORNER COMMON TO SECTIONS
 22 & 23, T 11 S R 5 W, WILLAMETTE MERIDIAN.



- _____ CONDITION REPORT ONLY
- _____ REFERENCED OUT
- xx RENEWED
- _____ SURVEYED IN

LOCATION AND COMMENTS:

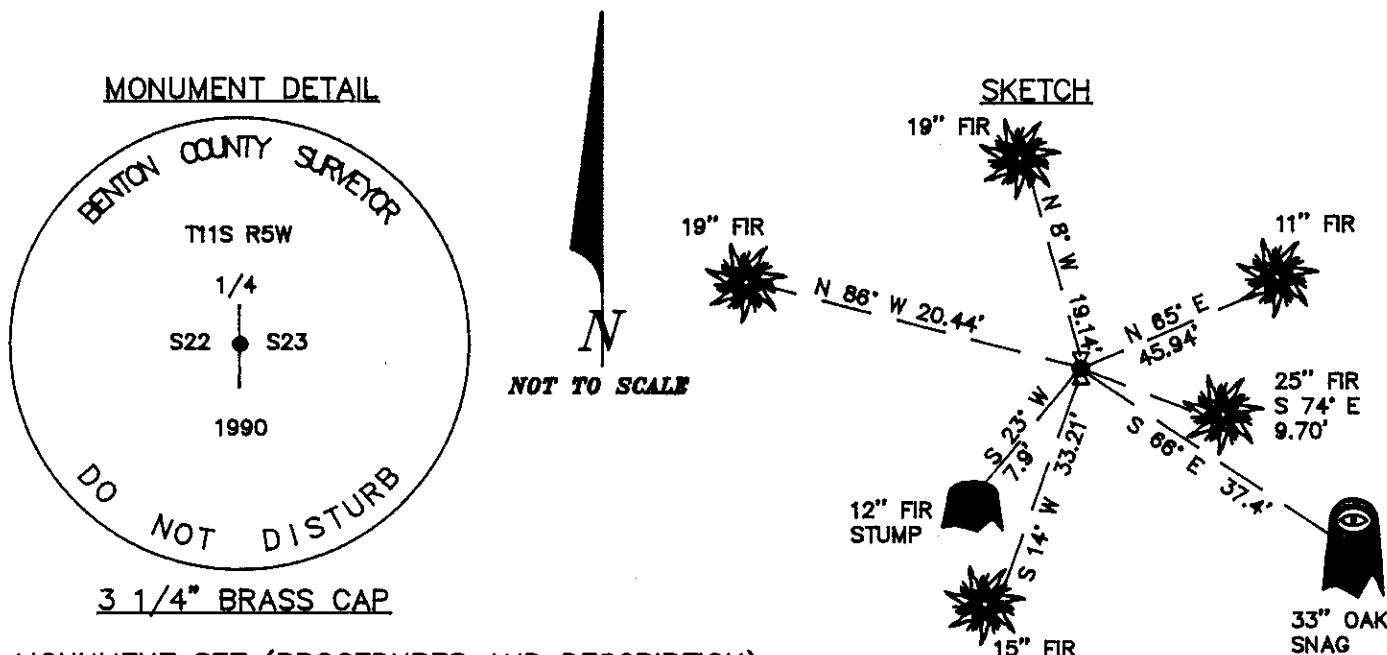
THE CORNER IS LOCATED APPROXIMATELY 400 FEET WESTERLY FROM THE WESTERLY MOST CITY OF CORVALLIS WATER TANK.

PREVIOUS RENEWALS/SURVEYS, ETC.:

ORIGINAL SURVEY BY G. W. HYDE IN 1852.
 CORNER RESTORATION NO. 728 BY W. C. GALLOWAY IN 1946.

MONUMENTS AND ACCESSORIES FOUND (CONDITION AND SOURCE):

- FOUND: FLYWHEEL 11" IN DIAMETER X 7" HIGH WITH A BOTTLE SET UPRIGHT IN THE CENTER FOR THE CORNER, FIRMLY SET 7" BELOW SURFACE (CORNER RESTORATION NO. 728).
 - FOUND: A FIR 25" IN DIAMETER, WITH A HEALED FACE, BEARS S 74° E 9.70 FEET (S 78° E 9.70 FEET, CORNER RESTORATION NO. 728). SET A P.K. NAIL AND A B.C.B.W. IN THE SOUTHWESTERLY BASE. SET A B.T. TAG ON THE NORTHWESTERLY FACE.
 - FOUND: AN OAK SNAG 33" IN DIAMETER BEARS S 66° E 37.4 FEET (S 69° E 36.96 FEET, CORNER RESTORATION NO. 728). SET A B.T. TAG ON THE NORTHWESTERLY FACE.
 - FOUND: A MOSTLY ROTTED FIR STUMP 12" IN DIAMETER BEARS S 23° W 7.9 FEET (S 23° W 7.72 FEET, CORNER RESTORATION NO. 728).
- NO OTHER RECORD BEARING OBJECTS WERE RECOVERED.



MONUMENT SET (PROCEDURES AND DESCRIPTION):

SET: 2" INSIDE DIAMETER BY 36" LONG IRON PIPE WITH A 3 1/4" BENTON COUNTY BRASS CAP, STAMPED AS SHOWN, IN THE SAME POSITION AS THE BOTTLE FOUND IN THE CENTER OF THE FLYWHEEL. BURIED THE FLYWHEEL AND THE BOTTLE ALONG THE EAST SIDE.

NEW ACCESSORIES:

- A FIR 11" IN DIAMETER BEARS N 65° E 45.94 FEET. FACED AND SCRIBED "1/4 S23 BT". SET A P.K. NAIL AND A B.C.B.W. IN THE SOUTHERLY BASE. SET A B.T. TAG ON THE WESTERLY FACE.
 - A FIR 15" IN DIAMETER BEARS S 14° W 33.21 FEET. FACED AND SCRIBED "1/4 S22 BT". SET A P.K. NAIL AND A B.C.B.W. IN THE NORTHWESTERLY BASE. SET A B.T. TAG ON THE NORTHEASTERLY FACE.
 - A FIR 19" IN DIAMETER BEARS N 8° W 19.14 FEET. FACED AND SCRIBED "1/4 S22 BT". SET A P.K. NAIL AND A B.C.B.W. IN THE EASTERLY BASE. SET A B.T. TAG ON THE SOUTHERLY FACE.
 - A FIR 19" IN DIAMETER BEARS N 86° W 20.44 FEET. FACED AND SCRIBED "1/4 S22 BT". SET A P.K. NAIL AND A B.C.B.W. IN THE NORTHERLY BASE. SET A B.T. TAG ON THE EASTERLY FACE.
- SET: ORANGE FIBERGLASS "SURVEY MARKER" POST 1 FOOT SOUTHERLY.

NOTES:

B.C.B.W. IS A BRASS WASHER STAMPED "BENTON COUNTY SURVEYOR". COMPASS DECLINATION IS 20° EAST. ALL MEASURED DISTANCES AND COMPASS BEARINGS ARE TO THE CENTER OF THE OBJECT, UNLESS OTHERWISE NOTED.

FIRM/AGENCY: BENTON COUNTY PUBLIC WORKS
ADDRESS: 360 S.W. AVERY AVE. CORVALLIS OR. 97333; PH. 757-6821
PARTY CHIEF: CURTIS J. LIESENFELT
CREW: MARY BARRON
WITNESS:

REGISTERED
 PROFESSIONAL
 LAND SURVEYOR

Danna L. Fehrenbacher
 OREGON
 JULY 16, 1982
 DANNA L. FEHRENBACHER
 1995