

C.S. 330  
W.W. L.  
June 1923  
With  
Ira Brooks  
John Noble  
Arnold

1/4 sec. cor. betw. secs. 13 + 24 T. 10 S. R. 6 W. W.M.  
Set 2 bricks + stake  
Dead Oak 12" in dia. bears S 15° E .09 chs. std.  
" " 16" " " " N 20° W .45 " "  
Fir 30" " " " " N 36° W .340 "  
W. " 24" " " " " S 67 1/2° W .310 "

Sec. corner to secs 13, 14, 23, + 24 - T. 10 S R. 6 W  
Set stone mld X  
Fir 30" in dia. bears N. 30° E .14  
" 24" " " " " S. 60° W .232  
" 20" " " " " S 20° E .115

1/4 sec. cor. to secs. 13 + 14 T. 10 S R. 6 W W.M.  
Set stone 8"x8"x10" + blue can  
Fir 24" S 30° W. .203 chs.  
" 30" N 41 1/2° W .353 "

N.E. Cor. of A.M. Rainwater Cl. 39, T. 11 S R. 4 W.  
Set 1" shaft + pinion  
Cherry 10" N. 52° 30' W. .421  
" 10" brs. N 3° W. .253  
Apple 6" " S. 38° E. .60  
Walnut 8" N 0° 30' W 1.105

1/4 Sec. cor. betw. secs. 20 + 21 T. 12 S. R. 6 W. W.M.  
Set 1" rod 12" below surf.  
Oak 8" East .652  
" 8" N 30° E .595  
" 6" S 82° W. 1.488

Sec. cor. to secs. 16, 17, 20, 21, T. 10 S R. 5 W. W.M.  
Set buggy axle from which  
Fir 14" in dia. bears N 71 1/2° E .27 chs.  
" 15" " " " " S 41° E 1.76 "  
" 10" " " " " N 41° W. 1.60 "  
W. Oak 10" " " " " S 55° W. 1.15

1/4 cor. betw. secs 20 + 21 T. 10 S R. 5 W.  
Set 1/2" pipe from which  
Fir 10" in dia. bears S. 70° W .09 chs.  
" 8" " " " " N. 70° E. .07 "

Most N. N.E. Cor. Arnold Fuller Cl. 38 T. 11 S R. 5 W  
Set 1/2" pipe + oak stk.  
Oak 12" N. 78° W. .265 chs.  
Fir 8" N 78° E .256 "  
Maple 6" S 39° E .190 "

Most N. N. E. corner Arnold Fuller C1 38, Twp. 11 S., R. 5 W.

Reestablishment by W. C. Galloway

June 1923

Set  $\frac{1}{2}$ " pipe and Oak stake

Oak 12" in diam bears N 78° W

.265 chains

Fir 8" in diam bears N 78° E

.256 chains

Maple 6" in diam bears S 29° E

.190 chains

Witnesses Ira Brooks and John Noble

744

97

BENTON COUNTY SURVEYORS OFFICE - CORNER RESTORATION

03081

T. 11 S, R. 5 W, W. B. & M., BENTON COUNTY, OREGON

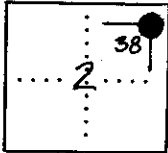
DLC  
SECTION 38

REPORTED BY VERLE MOORE

TITLE L.S. 501

DATE 9-16-1982

The information shown hereon was taken from  
the referenced county survey. Date: <sup>CPL</sup> 7/31/90



● OFFICIAL CORNER FOUND

○ CORNER SET

NNE CORNER COMMON TO SEC. DLC 38 &  
IS 1/2" IRON PIPE

DESCRIBE

ADDITIONAL INFORMATION

SEE C.S. 7457

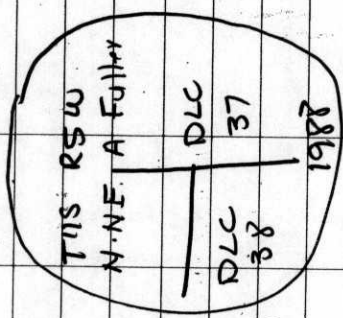
OVER

LEGIBLE MARKS ON BEARING OBJECTS

KIND			
SIZE			
BEARING			
DISTANCE			
BT TAG POSTED			

✓ TINS RSW NNE DLC 38  
 The NNE corner of the  
 Arnold Fuller DLC 38 monumented  
 with a 1/2" iron pipe firmly  
 set in the ground.  
 From which  
 an oak stump snag 12" diam  
 laying over bears N78W  
 no visible scribing 17'49" dist  
 a made 12" diam bears  
 S 29 E 12'23" dist nailed  
 a BCBW on west side  
 A 5/8 inch iron rod bears  
 S 88 W 93' dist  
 Fence line runs south & west  
 corner 0'30" east of fence corner

3/14  
 12/14/48  
 Ray  
 Zim  
 At Corner Point  
 Set a 2 3/8" O.D. X 36 galvanized  
 iron pipe with a 3/4 inch Benton County  
 Brass Cap marked as shown over  
 the found 1/2 pipe  
 From which a  
 a white fir 24" diam  
 bears NSOW 65' dist scribed DLC  
 DLC 38 BT nailed a BCBW  
 on NE face 38  
 1987  
 a white fir 12" diam bears S 83 E  
 17' dist scribed DLC 38 BT  
 nailed a BCBW on south face  
~~A 5/8 inch~~  
 Orange Survey sign 15' from west



115838050

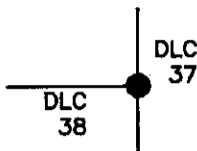
OREGON CORNER RESTORATION FORM

3556

SECTION NNE DLC 38 TOWNSHIP 11 S RANGE 5 W

COUNTY BENTON DATE 12/14/1988

CORNER DESIGNATION



NORTH-NORTHEAST CORNER  
OF THE ARNOLD FULLER  
DONATION LAND CLAIM  
NUMBER 38

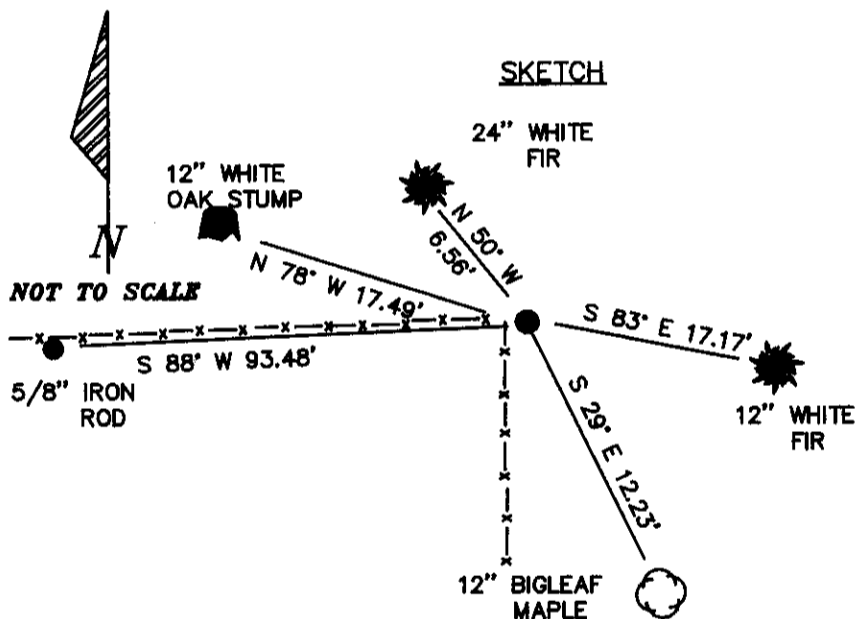
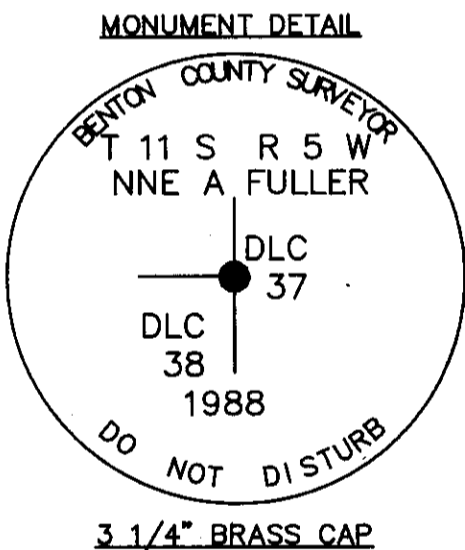
CONDITION REPORT ONLY  
NOT FOUND  
RENEWED  
UNRECORDED  
SURVEYED IN  
REFERENCED OUT

PREVIOUS RENEWALS/SURVEYS, ETC:

CORNER RESTORATION NUMBER 744 DATED JUNE 1923 BY W. C. GALLOWAY.

MONUMENTS AND ACCESSORIES FOUND (CONDITION AND SOURCE):

- FOUND:** A 1/2" INSIDE DIAMETER IRON PIPE SET FIRMLY IN THE GROUND.
- FOUND:** A LEANING WHITE OAK STUMP 12" IN DIAMETER BEARS N 78° W 17.49 FEET DISTANCE (N 78° W 17.49 FEET DISTANCE PER CORNER RESTORATION NUMBER 744). NO SCRIBING IS VISIBLE.
- FOUND:** A BIGLEAF MAPLE 12" IN DIAMETER BEARS S 29° E 12.23 FEET DISTANCE (S 29° E 12.54 FEET DISTANCE PER GALLOWAY CORNER RESTORATION NUMBER 744). NAILED A BCBW TO THE WEST BASE.
- FOUND:** A 5/8" IRON ROD PER CS 3952 BEARING S 88° W 93.48 FEET DISTANCE (S 88° 17' W 93.50 FEET DISTANCE PER CS 3982).



MONUMENT SET (PROCEDURES AND DESCRIPTION):

SET A 2 3/8" x 36" OUTSIDE DIAMETER IRON PIPE WITH A 3 1/4" BRASS CAP MARKED AS SHOWN OVER THE FOUND 1/2" IRON PIPE. AN ORANGE FIBER GLASS "SURVEY MARKER" SIGN BEARS WEST 1.50 FEET DISTANCE FROM THE DLC CORNER. A FENCE CORNER BEARS EAST 0.30 FEET DISTANCE FROM THE DLC CORNER.

NEW ACCESSORIES :

- A WHITE FIR 24" IN DIAMETER BEARS N 50° W 6.56 FEET DISTANCE BLAZED AND SCRIBED "DLC 38 BT". NAILED A BCBW TO THE NORTHEAST BASE.
- A WHITE FIR 12" IN DIAMETER BEARS S 83° E 17.17 FEET DISTANCE BLAZED AND SCRIBED "DLC 38 BT". NAILED A BCBW TO THE SOUTH BASE.

NOTES: BCBW IS A BRASS WASHER STAMPED "BENTON COUNTY SURVEYOR'S OFFICE". ALL MEASURED DISTANCES ARE TO THE BCBW, ALL BEARINGS ARE COMPASS BEARINGS TO THE CENTER OF THE TREE. TREE DIMENSIONS ARE MEASURED DIAMETERS, UNLESS OTHERWISE NOTED.

LOCATION AND COMMENTS : CORNER BEARS APPROXIMATELY SOUTHWEST 630 FEET DISTANCE FROM THE END OF NW KAINUI DRIVE COUNTY ROAD NUMBER 15311.

COMPASS DECLINATION : 20° E  
 FIRM/AGENCY : BENTON COUNTY PUBLIC WORKS  
 ADDRESS : 360 S.W. AVERY AVE. CORVALLIS OR. 97333  
 PARTY CHIEF : RAYMOND WILSON  
 NOTES : R J ZIMMER  
 WITNESS :

REGISTERED PROFESSIONAL LAND SURVEYOR

*Danna L. Ingram-Fehrenbacher*

OREGON  
 JULY 16, 1982  
 DANNA L. INGRAM-FEURENBACHER  
 1995