

17.
sta.
6 W
W. M.
P. W.

1/4 Sec. Cor. betw sec's 10 + 15 T. 13 S. R. 7 W.
Set bottle, shovel, + post.
Fir 50" N57° W 1.46 S.H.
" 40" S71° W 1.92 "
Small fir near.

C.S. 81 Con
Nov 26
1923
W.W.L.
+ Rosenornus

N.W. Corner of the Arnold Fuller D.L.C. 38, T. 11 S. R. 6 W.
Set oak sth + buggy axle - old trees standing
Fir 12" in dia. bears S45° E. 106 chs. dist.
" 30" " " " N81 1/2° W. 276 " "

Most N. N.W. ^E Cor. of Oscar F. Clark Cl. 42 T. 11 S. R. 5 W.
Set 1 1/2" pipe found old fir stump.
Oak 12" in dia. bears S. 83° W. 273 chs. dist.
" 14" " " " S. 77° E. 368 " "

S.W. Cor. of Arnold Fuller Cl. 38, T. 11 S. R. 5 W. W.M.
Set 1" rod Found 60 Maple stump S.W.
Orig. Oak 24" in dia. bears S78° W. 204 chs
" 14" " " " S. 72° E. 154'

N.W. Cor. of Abraham Locke Cl. 41, T. 11 S. R. 5 W. W.M.
Found 4"x6"x8" stone?
1" rod bears west 4.08 chs dist.

C.S. 3147
307
W.W.L.
Stanley Trip W.L.
Harry W.L.

Most E. N.E. Cor. Stephen Howell Cl. 46, T. 14 S. R. 6 W.
Mhd. Sandstone in 1/2 road
Ash 18" in dia bears N10° W. 1.15 chs
Oak post 12" " " S3° E. 273

C.H. Leonard
W.M. Oct 28, 1916

Set Meander corner 53.74 W. of N.E. Cor. sec. 25 T. 14 S.
Set 1 1/2" pipe
Maple 30" South .63
" 14" N. 63° E. .25
Ash 12" S. 76° E. .54

C.S. 296 Con.
W.W. Larson
John Richard

N.W. corner of Perman Henderson Cl. 50 T. 11 S. R. 6 W.
Set 1" rod + stone
Maple Stump 30" N. 5° W. .15
Ash 10" N.W. .95

5 W

30" Interior Cor. Wm. Pearson Cl. 51 T. 11 S. R. 6 W.
Set 30" casting 1" under surface of ground.
a gear S89° 32' W .89
N.W. Cor Cl. 50 bears N89° 32' E 8.60

S.W. Cor. of Perman Henderson Cl. 50 T. 11 S. R. 6 W.
Set 2 stones 6"x8"x6"
Oak 8" in dia. bears N. 3° E. 1.10
" 6" " " " N 62° W. 2.95
" 24" " " " N 60° E 2.98 orig.
" 10" " " " S 13° E 4.87

Most N. N. ~~E~~ corner of Oscar F. Clark C1 42, Twp. 11 S., R. 5 W.

757

Reestablishment by W. C. Galloway

November 26, 1923

Set $1\frac{1}{4}$ " pipe, found old Fir stump.

Oak 12" in diam bears S 83° W

.273 chains

Oak 14" in diam bears S 77° E

.368 chains

Witness W. W. Larsen

NNE D.L.C. 42 11-5 1/16/89

The North-North East corner of the Oscar Clark D.L.C. No. 42 is monumented by a 1/2" ID iron pipe set firmly in the ground set by Bert Urell per CS was set from Galloway BT's.

FROM WHICH

A white oak 18" in diameter bears S 77 W 18.38 feet dist. A fork of this tree has been cut. Nailed a BCBW to the north base.

A 7" in white oak 15" in diameter bears S 78° E 23.78 feet dist. Possible healed face. Nailed a BCBW to the SW base.

AT CORNER POINT:

Set a 2 3/8" x 36" OD iron pipe 3" above surface with a 3/14" Brass cap marked as shown.

FROM WHICH

A 1/2" ID iron pipe bears South 62.74' feet dist set per 11-5-000

A Douglas Fir 17" in diameter bears S 75° W 14.32 feet dist. Blazed and scribed "D.L.C. 42 BT" nailed ~~to~~ a BCBW to the ~~the~~ south base

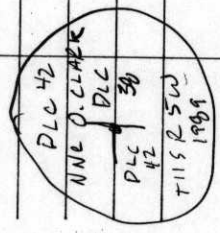
A white oak 22" in diameter bears S 15° E 31.08 feet dist. Blazed and scribed "D.L.C. 42 BT" nailed a BCBW to the west base

~~Blazed and scribed D.L.C. 42~~

40 nails on east edge of an old road bed

A 5/8" iron rod bears north 70' feet dist per CS

Orange post 5' 10" feet west Fence is 1' 10" east



1/2" pipe

1158242050

OREGON CORNER RESTORATION FORM

3566

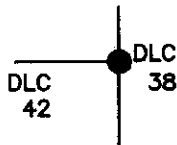
SECTION 11 TOWNSHIP 11 S RANGE 5 W

COUNTY BENTON DATE 1/16/1989

GPS CARD # NV

DLC NUMBER 42

CORNER DESIGNATION



NORTH-NORTHEAST
CORNER OF THE
OSCAR CLARK
DONATION LAND CLAIM
NUMBER 42

- CONDITION REPORT ONLY
- NOT FOUND
- RENEWED
- UNRECORDED
- SURVEYED IN
- REFERENCED OUT

PREVIOUS RENEWALS/SURVEYS, ETC:

CORNER RESTORATION NUMBER 757 BY W. C. GALLOWAY ON NOVEMBER 26, 1923.
COUNTY SURVEY NUMBER CS 2810.
GALLOWAY HARDCOPY 11-5-00008.

MONUMENTS AND ACCESSORIES FOUND (CONDITION AND SOURCE):

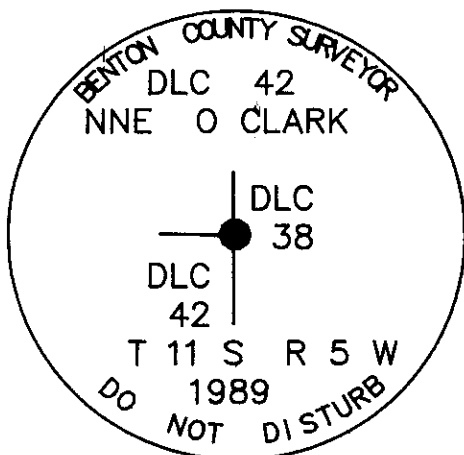
FOUND AT CORNER POINT: FOUND A 1/2" INSIDE DIAMETER IRON PIPE IN POOR CONDITION WHICH HAD BEEN SET FROM GALLOWAY BEARING TREES AS PER CS 2810.

FOUND: A WHITE OAK TREE 18" IN DIAMETER BEARS S 77° W 18.38 FEET DISTANCE (S 83° W 18.02 FEET DISTANCE PER CORNER RESTORATION NUMBER 757). TREE HAS BEEN CUT AND A SMALL FORK IS STILL ALIVE. NAILED A BCBW TO THE NORTH BASE.

FOUND: THE NORTH FORK OF A DOUBLE WHITE OAK TREE 15" IN DIAMETER BEARS S 78° E 23.78 FEET DISTANCE (S 77° E 24.29 FEET DISTANCE PER CORNER RESTORATION NUMBER 757). POSSIBLE HEALED FACE. NAILED A BCBW TO THE SOUTHWEST BASE.

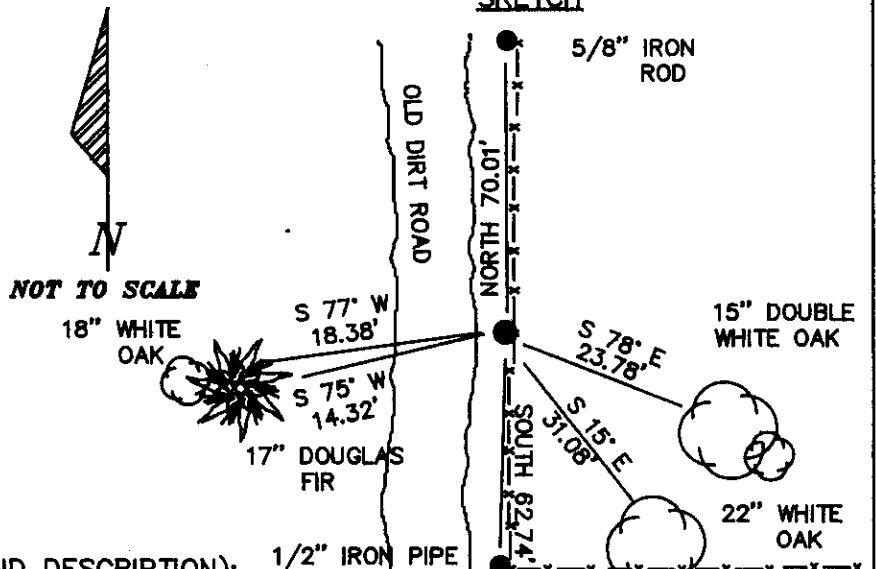
FOUND: A 1/2" INSIDE DIAMETER IRON PIPE BEARS SOUTH 62.74 FEET DISTANCE (S 00° 06' 30" E 62.83 FEET DISTANCE PER GALLOWAY HARDCOPY 11-5-00008).

MONUMENT DETAIL



3 1/4" BRASS CAP

SKETCH



MONUMENT SET (PROCEDURES AND DESCRIPTION):

SET A 2 1/2" x 36" OUTSIDE DIAMETER IRON PIPE (OVER THE FOUND 1/2" IRON PIPE) WITH A 3 1/4" BRASS CAP MARKED AS SHOWN. MONUMENT IS 3" ABOVE THE GROUND SURFACE. AN OLD WIRE FENCE BEARS EAST 1.10 FEET DISTANCE FROM CORNER. AN ORANGE FIBERGLASS "SURVEY MARKER" SIGN POST BEARS WEST 1.10 FEET DISTANCE FROM CORNER.

NEW ACCESSORIES :

A DOUGLAS FIR 17" IN DIAMETER BEARS S 75° W 14.32 FEET DISTANCE. TREE IS MARKED BY A BLAZE AND IS SCRIBED "DLC 42 BT". NAILED A BCBW TO THE SOUTH BASE.

A WHITE OAK 22" IN DIAMETER BEARS S 15° E 31.08 FEET DISTANCE. TREE IS MARKED BY A BLAZE AND IS SCRIBED "DLC 42 BT". NAILED A BCBW TO THE WEST BASE.

A 5/8" IRON ROD PER CS 4721 BEARING NORTH 70.01 FEET DISTANCE.

NOTES: BCBW IS A BRASS WASHER STAMPED "BENTON COUNTY SURVEYOR'S OFFICE". ALL MEASURED DISTANCES ARE TO THE BCBW, ALL BEARINGS ARE COMPASS BEARINGS TO THE CENTER OF THE TREE. TREE DIMENSIONS ARE MEASURED DIAMETERS, UNLESS OTHERWISE NOTED.

LOCATION AND COMMENTS : COMPASS DECLINATION : 20° E

CORNER IS ON THE EAST EDGE OF AN OLD DIRT ROAD NEXT TO A WIRE FENCE AND APPROXIMATELY 400 FEET DISTANCE FROM THE NORTH END OF HIGHLAND PLACE COUNTY ROAD NUMBER 15351.

FIRM/AGENCY: BENTON COUNTY PUBLIC WORKS
ADDRESS: 360 S.W. AVERY AVE. CORVALLIS OR. 97333
PARTY CHIEF: RAYMOND WILSON
NOTES: ANDREW FOSTER
WITNESS:

REGISTERED PROFESSIONAL LAND SURVEYOR

Danna L. Ingram-Fehrenbacher

OREGON
JULY 16, 1982
DANNA L. INGRAM-FEHNRENBACHER
1995