

CORNER FILE TRACKING

H:\Survey\Corners\Misc\Filetrac.doc

11/23/98

CORNER NUMBER
115846040

STEP	HISTORY()	RESTORATION()	
Form Prepared, DB	3/18/05	4/26/05	✓
Field Inspection, DB	4/26/05	4/26/05	✓
Form Checked, DB	5/18/05	5/18/05	✓
Form Edited, DB	5/18/05	5/18/05	✓
Form Signed, DB	5/19/05	5/19/05	✓
Counter Index	5/13/05	5/13/05	
GIS Index	5/13/05	5/13/05	✓
Authorize Payment, DB	—	—	
Archive Digital Files	6/02/05	6/02/05	
Collect Documents	N/A	N/A	✓
Scanned	6/2/05	6/2/05	
Copy For Filming	5/19/05	5/19/05	✓
Filed, DB			
Finish index (count unit)	4/26/05	4/26/05	✓
Filmed (Archived), DB			

(DB) = Entry needed in database (Access).

COMMENTS:

DATE 03/18/2005

TOWNSHIP 11 SOUTH, RANGE 5 WEST, WILLAMETTE MERIDIAN; SECTION 24 CORNER N/A
DONATION LAND CLAIM ARCHIMEDES STEWART D. L. C. # 46 CORNER N. W.

COMMON CORNER(S):

NONE

RECORDS (INFORMATION IN BOLD ITALICS IS COUNTY STAFFS' INTERPRETATION OF THE RECORD)

BASED ON EXTENSIVE RESEARCH AND RECOVERY OF EVIDENCE, THIS OFFICE HAS DETERMINED THAT MOST GENERAL LAND OFFICE SURVEYORS MEASURED TO THE FACE OF BEARING TREES.

- [01] GENERAL LAND OFFICE (GLO) NOTES OF THE ARCHIMEDES STEWART DONATION LAND CLAIM (DLC) NO. 46 BY D. HATHORN D. S., DATED NOVEMBER 8, 1853. **SET POST FOR N. W. CORNER DEPOSITED CHARED STAKE AND DUG TRENCH.**
- [02] OREGON STATE HIGHWAY RIGHT OF WAY MAP NO. 6B-4-2 DATED APRIL 1942. TIED, BUT NOT DESCRIBED.
- [03] COUNTY SURVEY NO. 3722 BY FRED I. LEMKE, P. L. S., DATED AUGUST 8, 1962. **SET 2" PIPE N. W. CORNER OF A. STEWART D. L. C. NO. 46.**
- [04] COUNTY SURVEY NO. 4676 BY FRED I. LEMKE, P. L. S., DATED JANUARY 18, 1969. **2" PIPE N. W. CORNER A. STEWART D. L. C. #46.**
- [05] COUNTY SURVEY NO. 5013 BY FRED I LEMKE, P. L. S., DATED DECEMBER 3, 1970. **N. W. CORNER OF ARCHIMEDES STEWART D. L. C. NO. 46, FOOUND 2" PIPE.**
- [06] COUNTY SURVEY NO. 7251 BY ROLLAND BAXTER APRIL 1, 1981. **N. W. CORNER OF ARCHIMEDES STEWART D. L. C. NO. 46 FOUND 1 1/2" IRON ROD.**
- [07] COUNTY SURVEY NO. 7655 BY WARREN DEGLOW, P.L.S., DATED JULY 2, 1984. **FOUND 2 1/2" I.P. ID. NW CORNER ARCHIMEDES STEWART DLC #46 - C.S. #3722.**
- [08] COUNTY SURVEY NO. 8351 BY WARREN DEGLOW, P. L. S., DATED OCTOBER 21, 1989. **FOUND 2 1/2" INSIDE DIAMETER IRON PIPE N. W. CORNER OF THE ARCHIMEDES STEWART D. L. C. #46 - C. S. #7655.**
- [09] COUNTY SURVEY NO. 9653 BY HENRY COLE P. L. S., DATED MARCH 13, 2001. **FOUND 2" PIPE NORTHWEST CORNER OF ARCHIMEDES STEWART D. L. C. NO. 46 PER C. S. 3722.**

NOTES:

THIS IS A MICROSOFT WORD 2000 DOCUMENT NAMED "15846040" CREATED FROM A BOILER PLATE DOCUMENT NAMED "HISTORY", WHICH HAS A STYLESHEET NAMED "CORNER" ATTACHED TO IT.

FIRM/AGENCY: BENTON COUNTY SURVEYOR'S OFFICE
ADDRESS: 360 S.W. AVERY AVE. CORVALLIS OR 97333; PH. 766-6821
RESEARCH BY: DAVID M. DEAN, P.L.S.
DATA ENTRY BY: ADAM CASALEGNO, SURVEY TECH.

BENTON COUNTY CORNER RESTORATION FORM, PAGE 1 OF 2, 115846040R1

SEE CORNER HISTORY FORM FOR RECORDS ETC.

CORNER RESTORATION FIELD BOOK NUMBER 23 PAGE(S) 24 DATE 04/26/2005
TOWNSHIP 11 SOUTH, RANGE 05 WEST, WILLAMETTE MERIDIAN; SECTION 24 CORNER NONE
DONATION LAND CLAIM ARCHIMEDES STEWART NO. 46 CORNER NORTHWEST
CONDITION REPORT ; REFERENCED OUT ; RENEWED XX; SURVEYED IN

LOCATION AND COMMENTS:

CORNER IS LOCATED APPROXIMATELY 30 FEET WEST OF THE WESTERLY EDGE OF PAVEMENT ON HIGHWAY 99W. TO REACH CORNER FROM THE JUNCTION OF HIGHWAY 99W AND NW ELKS DRIVE, TRAVEL NORTHERLY ON HIGHWAY 99W FOR 1500 FEET TO CORNER ON WESTERLY SIDE OF ROAD. CORNER IS GOOD FOR PREMARKING AND GPS CONTROL.

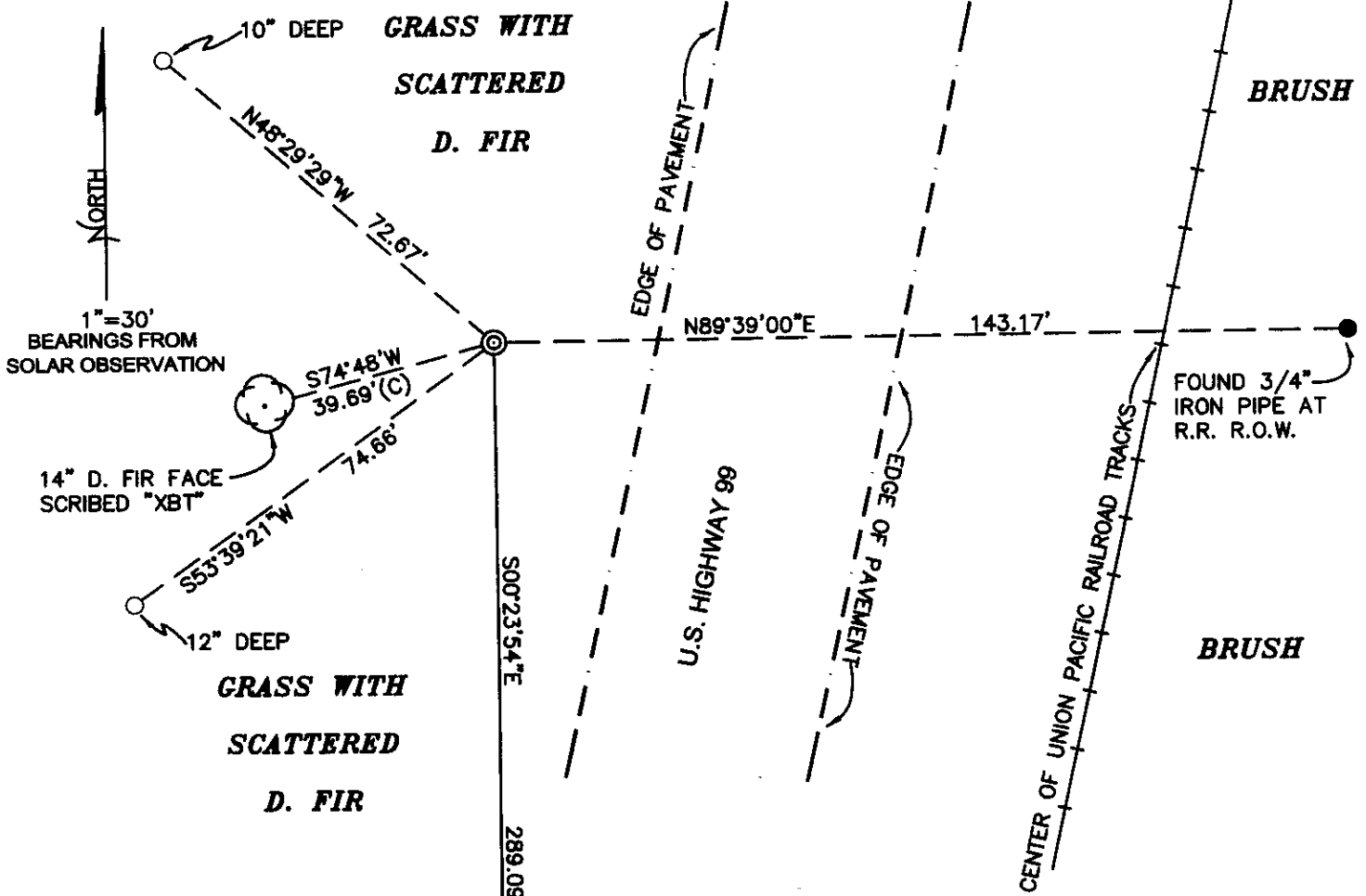
MONUMENTS AND ACCESSORIES FOUND (CONDITION AND SOURCE):

1. FOUND 2" X 27" IRON PIPE FLUSH WITH GROUND LEVEL FOR CORNER POSITION.
(SET 2" PIPE FOR N.W. CORNER A. STEWART DLC NO. 46 PER RECORD [03]).
(2" PIPE N.W. CORNER A STEWART DLC NO. 46 PER RECORDS [04], [05] AND [08]).
(NW CORNER ARCHIMEDES STEWART DLC NO. 46 FOUND 1 1/2" IRON ROD PER RECORD [06]).
FOUND 2 1/2" IRON PIPE AT NW CORNER ARCHIMEDES STEWART DLC NO. 46 PER RECORDS [07] AND [08]).
2. FOUND 3/4" IRON PIPE, 4" ABOVE GROUND LEVEL, N89°39'00"E, 143.17 FEET.
(SET 3/4" PIPE, N89°38'45"E, 143.08 FEET PER RECORD [03]).
(3/4" PIPE, S89°38'45", 143.08 FEET PER RECORDS [04] AND [05]).
3. FOUND 3 1/4" BRASS DISK IN MONUMENT BOX AT THE NE CORNER OF HEMAN LEWIS DLC 47, S00°23'54"E, 289.09 FEET.
SEE BENTON COUNTY CORNER RESTORATION NO. 115847010.
(SOUTH, 287.1 FEET PER ORIGINAL GLO MAP)
(FOUND 1" ROD, SET 2" PIPE OVER, S0°24'E, 288.95 FEET PER RECORD [03]).
(1" ROD IN 2" PIPE, S0°24'E, 288.95 FEET PER RECORDS [04] AND [05]).

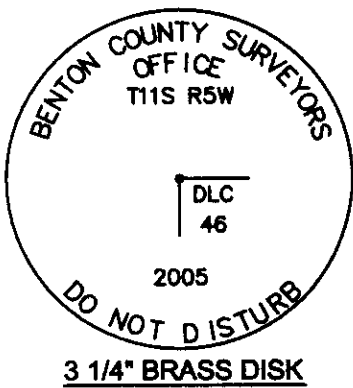
MONUMENT SET (PROCEDURES AND DESCRIPTION):

IT IS UNCLER WHAT METHOD RECORD [03] USED TO CALCULATE AND MONUMENT THE POSITION OF THE SUBJECT CORNER. NO EVIDENCE REMAINS OF THE ORIGINAL GLO MONUMENT OR ACCESSORIES. THE POSITION OF THE 2" PIPE AS SET PER RECORD [02] IS IN GENERAL AGREEMENT WITH THE ORIGINAL GLO MAP. WE HELD THE 2" PIPE FOR THE TRUE CORNER BASED ON ITS ACCEPTANCE AND USAGE OVER A 43 YEAR PERIOD.

REMOVED THE 2" X 27" PIPE AND SET A 2" X 31 1/2" GALVANIZED IRON PIPE WITH A 3 1/4" BRASS DISK CONCRETED IN THE TOP, 6" BELOW GROUND LEVEL AND MARKED AS SHOWN ON PAGE 2 OF 2. SET 6 FOOT ORANGE CARSONITE "SURVEY MARKER" POST 0.5 FEET WEST.



MONUMENT DETAIL



LEGEND

- SET 5/8" X 30" REBAR WITH YELLOW PLASTIC CAP MKD "BENTON COUNTY SURVEYOR"
- FOUND MONUMENT AS NOTED
- (F) MEASUREMENT TO FACE
- ⊙ GOVERNMENT MONUMENT SET AS SHOWN
- ⊙ BEARING TREE AS NOTED
- R.R. RAILROAD
- ⊙ GOVERNMENT CORNER FOUND AS SHOWN

FOUND 3 1/4" BRASS DISK
N.E. CORNER OF HERMAN LEWIS
D.L.C. NO. 47 PER RESTORATION
NO. 115847010

NEW ACCESSORIES:

1. SET REBAR (SEE LEGEND) 12" BELOW GROUND LEVEL S53°39'21"W, 74.66 FEET.
2. SET REBAR (SEE LEGEND) 10" BELOW GROUND LEVEL N48°29'29"W, 72.67 FEET.
3. 14" D. FIR FACE SCRIBED "XBT" S74°48'W, 39.69 FEET TO FACE. SET ALUMINUM NAIL AND PLASTIC WASHER IN BOTTOM OF FACE FOR DISTANCE AND ANGLE MEASUREMENT.

NOTES:

COMPASS DECLINATION IS 20° EAST. ALL MEASURED DISTANCES AND BEARINGS ARE TO THE CENTER OF THE OBJECT, UNLESS OTHERWISE NOTED. ALL BEARING TREES ARE PAINTED AND HAVE A B.T. TAG ATTACHED, FACING THE CORNER UNLESS OTHERWISE NOTED. ALL NEW BEARING TREES HAVE A PLASTIC WASHER (STAMPED "BENTON COUNTY SURVEYOR CORNER RESTORATION") ATTACHED (BY ALUMINUM NAIL) TO THE FACE, BELOW THE "BT" FOR DISTANCE AND ANGLE MEASUREMENT UNLESS OTHERWISE NOTED. THE DRAWING IS FROM AUTOCAD RELEASE 2002.

THIS RESTORATION WAS PERFORMED AT THE DIRECTION AND APPROVAL OF THE BENTON COUNTY SURVEYOR, aw

REGISTERED
PROFESSIONAL
LAND SURVEYOR

5/19/05 David M. Dean

OREGON
JULY 13, 1984
DAVID M. DEAN
2090

FIRM/AGENCY: BENTON COUNTY SURVEYOR'S OFFICE
ADDRESS: 360 S.W. AVERY AVE. CORVALLIS OR 97333; PH. 766-6821
PRESENT: DAVID M. DEAN, P.L.S. AND ADAM CASALEGNO, SURVEY TECH.
EQUIPMENT: LEICA TCR 1105 WITH TDS ON BOARD

RENEWAL DATE: 12/31/05

115846040

REMONUMENTING NW COR ARCHIMEDES STEWART

DLC 46 T HS R5W

Fd 2" x 27" I.P. FLUSH w/GROUND. IT IS

UNCLEAR WHAT METHOD CS 3722 USED TO

CALL POSITION FOR CORNER. WE NEED

I.P. BASED ON BEST EVIDENCE AND

43 YRS. OF USAGE. REMOVED 2" x 27" I.P.

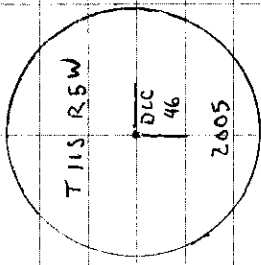
AND SET 2" x 3 1/2" G.I.P. w/ 3/4" GRASS

DISK CONC. IN TOP 6" ↓ & MKD AS

SHOWN. BEING 2" x 27" I.P. 2.5' ELL

↓ 10" ↓ SET 6' ORANGE CARSONITE POST

0.5 WEST
0.5 EAST



LAT: 44-36-15

LONG: 123-14-50

3 1/4" GRASS DISK

CLEAR, MILD

68°F 30.0" Hg

LEICA TCR 1155/TDS

4/26/05

D. DEAN

A. CUSALEGNO

23/24

