

# CORNER FILE TRACKING

F:\Survey\Corners\Misc\Filetrac.doc

8/11/97

|                      |
|----------------------|
| <b>CORNER NUMBER</b> |
| <b>115855030</b>     |

| <b>STEP</b>                   | <b>HISTORY(1)</b> | <b>RESTORATION(3)</b> |
|-------------------------------|-------------------|-----------------------|
| <b>Form Prepared, DB</b>      | 10/9/97           | 6/18/99               |
| <b>Field Inspection, DB</b>   | —                 | —                     |
| <b>Form Checked, DB</b>       | 6/29/99           | 6/29/99               |
| <b>Form Edited, DB</b>        | 7/8/99            | 7/2/99                |
| <b>Form Signed, DB</b>        | —                 | —                     |
| <b>Authorize Payment, DB</b>  | —                 | —                     |
| <b>Archive Digital Files</b>  | 7/9/99            | 7/9/99                |
| <b>Collect Documents</b>      | 7/15/99           | 7/15/99               |
| <b>Copy For Filming</b>       |                   |                       |
| <b>Filmed</b>                 |                   |                       |
| <b>Scanned (Archived), DB</b> |                   |                       |
| <b>Indexed</b>                |                   |                       |
| <b>Update Database</b>        |                   |                       |
| <b>Filed, DB</b>              |                   |                       |

(DB) = Entry needed in database (Access).

## COMMENTS:

~~Since all items are in the DB~~

✓ To see if this has been filmed

55  
162  
HUNN

| CORNER HISTORY |            | T 11 S, R 5 W                    |                                     | SECTION 28<br>D.L.C. ALFRED WITHAM NO. 55         |  | CORNER<br>CORNER INT-SE                  |  | #<br>855030 |
|----------------|------------|----------------------------------|-------------------------------------|---|--|--|--|-------------|
| NO.            | DATE       | SOURCE                           | SURVEYOR                            | MONUMENTS AND ACCESSORIES                         |  | COMMENTS                                 |  |             |
| ①              | 9/16/1856  | ORIG. G.L.O.                     | DENNIS HATHORN                      | SET POST @ 3 OAK B.T.'S                           |  |  |  | 1           |
|                |            |                                  |                                     |   |  |  |  | 2           |
| ②              | 5/5/1940   | CS # 1470                        | W.C. GALLOWAY                       | FND B.T. EVID. SET 1 1/4" X 24" PIPE @ 2 NEW OAKS |  | FB 53/54                                 |  | 3           |
|                |            |                                  |                                     |   |  |  |  | 4           |
| ③              | "          | OLD COR. REST.<br>BK. #1 PL. 226 | " "                                 | " " " " " " " " " " " "                           |  |  |  | 5           |
|                |            |                                  |                                     |   |  |  |  | 6           |
| ④              | "          | REST. 806                        | " "                                 | " " " " " " " " " " " "                           |  | TRANS. COPY @ E. + O.                    |  | 7           |
|                |            |                                  |                                     |   |  |  |  | 8           |
| ⑤              | NONE GIVEN | MAP NO.<br>11-5-00026            | BENTON COUNTY SUR-<br>VEYORS OFFICE | 1 1/4" PIPE                                       |  |  |  | 9           |
|                |            |                                  |                                     |   |  |  |  | 10          |
| ⑥              | 6/4/1963   | CS # 3849                        | FRED LEAKE                          | FND. 1 1/4" PIPE @ 1 NEW B.T.                     |  | LOOK FOR B.T.                            |  | 11          |
| ⑦              | 10/25/1963 | CS # 3867                        | " "                                 | " " "   |  |  |  | 12          |
| ⑧              | 1/20/1964  | CS # 3995                        | " "                                 | " " "   |  |  |  | 13          |
|                |            |                                  |                                     |   |  |  |  | 14          |
| ⑨              | 9/4/1970   | CS # 4945                        | " "                                 | " " " & #3849 B.T.                                |  |  |  | 15          |
|                |            |                                  |                                     |   |  |  |  | 16          |
| ⑩              | 9/13/1971  | CS # 5167                        | " "                                 | " " " " " "                                       |  |  |  | 17          |
|                |            |                                  |                                     |   |  |  |  | 18          |
| ⑪              | 3/15/1977  | CS # 6438                        | DONALD MCCONNELL                    | FND 1/2" I.P.                                     |  |  |  | 19          |
|                |            |                                  |                                     |   |  |  |  | 20          |
| ⑫              | 8/22/1977  | CS # 6448                        | GLEN LING (E)                       | " 1 1/4" I.P.                                     |  |  |  | 21          |
|                |            |                                  |                                     |   |  |  |  | 22          |
| ⑬              | 11/19/1980 | CS # 7176                        | KEN WIGHTMAN & JAMES GRIPPE         | " " " SET 5/8" I.P. AS ACCES.                     |  |  |  | 23          |
|                |            |                                  |                                     |   |  |  |  | 24          |
| ⑭              | 12/9/1982  | CS # 7480                        | RAY WILSON                          | " " "   |  |  |  | 25          |
|                |            |                                  |                                     |   |  |  |  | 26          |
| ⑮              | 12/23/1982 | REST. 3104                       | " "                                 | " " "   |  | TRANS. COPY @ E                          |  | 27          |
|                |            |                                  |                                     |   |  |  |  | 28          |
| ⑯              | 8/3/1984   | CS # 7664                        | RAY WILSON                          | " " "   |  |  |  | 29          |
|                |            |                                  |                                     |   |  |  |  | 30          |
| ⑰              | 12/7/1988  | REST. 3550                       | DANNA INGRAM<br>FEARENBACHER        | " 1 1/2" I.O.I.P. + 3 ACCES.                      |  | INCOMPLETE INFO                          |  | 31          |
|                |            |                                  |                                     |   |  | LOOK FOR MW B.T. + 2 <sup>ND</sup>       |  |             |
|                |            |                                  |                                     |   |  | MON. DO A HISTORY<br>LOOK FOR LEAKE B.T. |  |             |

N. W. corner of Joseph P. Friedly DLC 62, Twp. 11-5

806

Reestablishment by W. C. Galloway

May 5, 1940

Set a  $1\frac{1}{4}$ " x 24" galvanized pipe for corner

Oak 24" in diam bears N 13° 55' W

2.570 chains

Oak 25" in diam bears S 36° 00' E

1.560 chains

Oak 25" in diam bears S 0° 13' W

2.157 chains

N. W. tree down, S. E. stump out.

Witness Adrian Seits

BENTON COUNTY SURVEYORS OFFICE - CORNER RESTORATION

03104

T 11 S, R 5 W, W. B. & M., BENTON COUNTY, OREGON

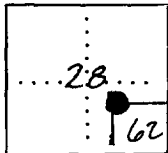
DLC SECTION 62

The information shown hereon was taken from  
the referenced county survey. Date: 7/31/90

REPORTED BY RAY WILSON

TITLE L.S. 1924

DATE 12-23-1982



● OFFICIAL CORNER FOUND

○ CORNER SET

N.W. CORNER COMMON TO SEC. DLC 62 &  
is 1/4" I.D. IRON PIPE  
DESCRIBE

ADDITIONAL INFORMATION

SEE C.S. 7480

LEGIBLE MARKS ON BEARING OBJECTS

|               |                   |  |  |  |
|---------------|-------------------|--|--|--|
| KIND          | ROD               |  |  |  |
| SIZE          | 3/8"              |  |  |  |
| BEARING       | N. 73° 01' 12" W. |  |  |  |
| DISTANCE      | 36.40'            |  |  |  |
| BT TAG POSTED |                   |  |  |  |

OVER

OREGON CORNER RESTORATION FORM

3550

SECTION NW DLC 62 TOWNSHIP 11 S RANGE 5 W

COUNTY BENTON DATE 12/7/1988

CORNER DESIGNATION

CONDITION REPORT ONLY

NORTHWEST CORNER  
OF THE JOSEPH P.  
FRIEDLY DONATION  
LAND CLAIM  
NUMBER 62

NOT FOUND  
RENEWED  
UNRECORDED  
SURVEYED IN  
REFERENCED OUT

DLC  
62

PREVIOUS RENEWALS/SURVEYS, ETC.:

CORNER RESTORATION NUMBER 806 DATED MAY 5, 1940 BY W. C. GALLOWAY.

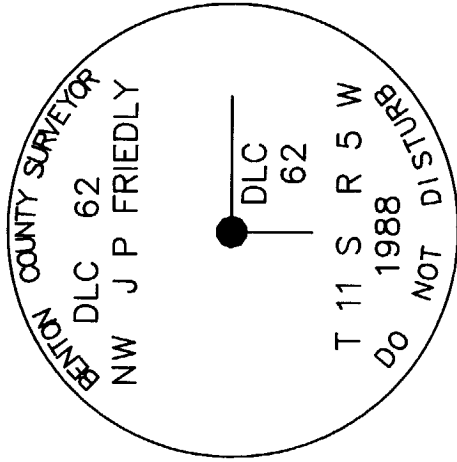
MONUMENTS AND ACCESSORIES FOUND (CONDITION AND SOURCE):

FOUND A 1 1/2" INSIDE DIAMETER IRON PIPE 2" BELOW SURFACE OF THE GROUND AT THE NORTHWEST CORNER OF DLC 62.

FOUND: A WHITE OAK 36" IN DIAMETER BEARS S 36° E 102.13 FEET DISTANCE (S 36° E 102.96 FEET DISTANCE PER CORNER RESTORATION NUMBER 806). TREE HAS A HEALED FACE. NAILED A BCBW TO THE WEST BASE.

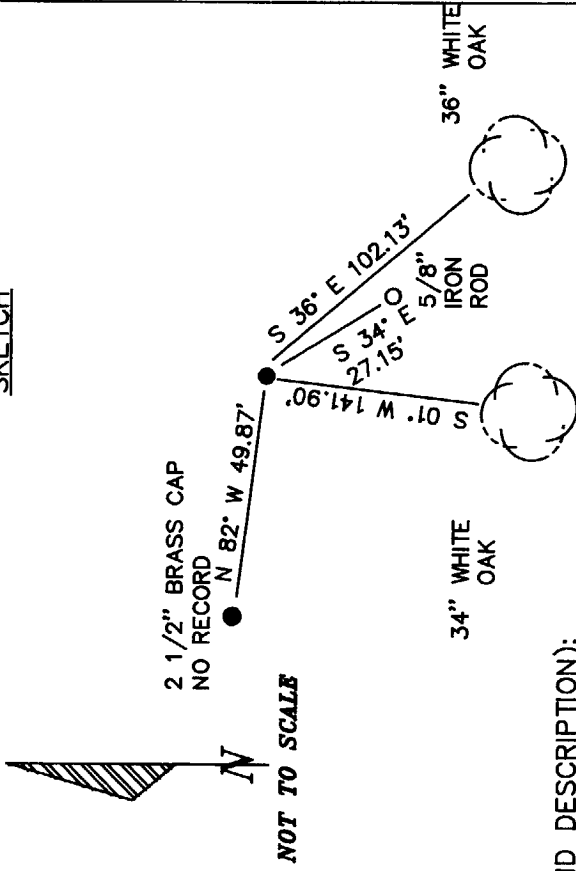
FOUND: A WHITE OAK 34" IN DIAMETER BEARS S 01° W 141.90 FEET DISTANCE (S 00° 13' W 142.36 FEET DISTANCE PER CORNER RESTORATION NUMBER 806). TREE HAS A HEALED FACE. NAILED A BCBW TO THE WEST BASE.

MONUMENT DETAIL



3 1/4" BRASS CAP

SKETCH



MONUMENT SET (PROCEDURES AND DESCRIPTION):

SET A 2 3/8" x 36" OUTSIDE DIAMETER IRON PIPE WITH A 3 1/4" BRASS CAP MARKED AS SHOWN OVER THE 1 1/4" IRON PIPE 4" ABOVE THE SURFACE OF THE GROUND. AN ORANGE FIBER GLASS "SURVEY MARKER" SIGN IS 1.20 FEET DISTANCE EAST OF THE CORNER.

NEW ACCESSORIES :

SET A 5/8" x 30" IRON ROD WITH A YELLOW PLASTIC CAP MARKED " BENTON COUNTY SURVEYOR" BEARS S 34° E 27.15 FEET DISTANCE. MONUMENT IS 10" BELOW GROUND SURFACE.

FOUND A 2 1/2" DIAMETER BRASS CAP MARKED "UNIVERSITY PARK INITIAL PT 1983 RLS 1637" BEARS N 82° W 49.87 FEET DISTANCE. NO RECORD OF BRASS CAP.

NOTES: BCBW IS A BRASS WASHER STAMPED "BENTON COUNTY SURVEYOR'S OFFICE".

ALL MEASURED DISTANCES ARE TO THE BCBW, ALL BEARINGS ARE COMPASS BEARINGS TO THE CENTER OF THE TREE. TREE DIMENSIONS ARE MEASURED DIAMETERS, UNLESS OTHERWISE NOTED.

LOCATION AND COMMENTS :

COMPASS DECLINATION : 20° E  
FIRM/AGENCY : BENTON COUNTY PUBLIC WORKS

CORNER IS APPROXIMATELY WEST 24 FEET DISTANCE FROM THE END OF NW UNIVERSITY WAY.

ADDRESS: 360 S.W. AVERY AVE.  
CORVALLIS OR. 97333

PARTY CHIEF: RAYMOND E. WILSON  
NOTES: R J ZIMMER

WITNESS:

REGISTERED  
PROFESSIONAL  
LAND SURVEYOR

*Dannach. J. J. Fehrenbacher*

OREGON  
JULY 16, 1982  
DANNA L. INGRAM-FEHNENBACHER  
1995

TOWNSHIP 11 SOUTH, RANGE 5 WEST, WILLAMETTE MERIDIAN; SECTION 28 CORNER  
DONATION LAND CLAIM ALFRED WITHAM DLC NO. 55 CORNER INTERIOR-SE

**COMMON CORNER(S):**

THE NORTH AND WEST-NORTHWEST CORNER OF DLC NO. 62, IN TOWNSHIP 11 SOUTH, RANGE 5 WEST, WILLAMETTE MERIDIAN.

**UPDATES AND REVISIONS:****CORNER RECORDS (PREVIOUS RENEWALS, SURVEYS, ETC.)**

- [01] ORIGINAL GLO SURVEY BY DENNIS HATHORN DATED SEPTEMBER 16, 1856.
- [02] COUNTY SURVEY NO. 1470 BY W.C. GALLOWAY DATED MAY 5, 1940 (FIELD BOOK NO. 53, PAGE 54).
- [03] OLD CORNER RESTORATION BOOK NO. 1 PAGE 226 BY W.C. GALLOWAY DATED MAY 5, 1940.
- [04] CORNER RESTORATION NO. 806 BY W.C. GALLOWAY DATED MAY 5, 1940.
- [05] MAP NO. 11-5-00026 BY BENTON COUNTY SURVEYORS OFFICE (NO DATE GIVEN).
- [06] COUNTY SURVEY NO. 3849 BY FRED LEMKE DATED JUNE 4, 1963.
- [07] COUNTY SURVEY NO. 3867 BY FRED LEMKE DATED OCTOBER 25, 1963.
- [08] COUNTY SURVEY NO. 3995 BY FRED LEMKE DATED JANUARY 20, 1964.
- [09] COUNTY SURVEY NO. 4945 BY FRED LEMKE DATED SEPTEMBER 4, 1970.
- [10] COUNTY SURVEY NO. 5167 BY FRED LEMKE DATED SEPTEMBER 13, 1971.
- [11] COUNTY SURVEY NO. 6438 BY DONALD McCONNEL DATED MARCH 15, 1977.
- [12] COUNTY SURVEY NO. 6448 BY GLEN LING DATED AUGUST 22, 1977.
- [13] COUNTY SURVEY NO. 7176 BY KEN WIGHTMAN AND JIM GRIFFIS DATED NOVEMBER 19, 1980.
- [14] COUNTY SURVEY NO. 7480 BY RAY WILSON DATED DECEMBER 9, 1982.
- [15] CORNER RESTORATION NO. 3104 BY RAY WILSON DATED DECEMBER 23, 1982.
- [16] COUNTY SURVEY NO. 7664 BY RAY WILSON DATED AUGUST 3, 1984.
- [17] CORNER RESTORATION NO. 3550 BY DANNA INGRAM-FEHRENBACHER DATED DECEMBER 7, 1988.

**COMMENTS/LOCATION/ETC:**

THE SURVEYOR IN RECORD [01] MEASURED DISTANCES TO THE FACE OF HIS BEARING TREES.

RECORD [04] IS A TRANSCRIBED COPY OF RECORD [03] AND MAY CONTAIN ERRORS AND OMISSIONS.

RECORD [14] IS A TRANSCRIBED FROM RECORD [13] BY THIS OFFICE AND MAY CONTAIN ERRORS AND OMISSIONS.

THE RECORD DISTANCES TO THE TWO RECOVERED OAK BEARING TREES AS SHOWN ON RECORD [16] ARE ACTUALLY SLOPE DISTANCES AS SHOWN ON RECORD [03].

THIS CORNER WAS VISITED ON JUNE OF 1993 BY CURT LIESENFELT AND MARK ANDERSON AND WAS FOUND TO BE VISUALLY AS PER RECORD [17] WITH THE FOLLOWING EXCEPTIONS.

THE ORIGINAL 24" OAK (N 13° W 169.62 FEET FACE MEASUREMENT AS PER [01]) IS LYING DOWN NEAR ITS RECORD LOCATION.

THE 30" OAK (N 38° 22' W 71.0 FEET AS PER RECORD [06]) IS LYING DOWN NEAR ITS RECORD LOCATION.

THE CORNER IS LOCATED APPROXIMATELY 39 FEET SOUTHWESTERLY FROM THE SOUTHEAST CORNER OF THE ASPHALT BASKETBALL COURT AT THE SOUTHWESTERLY END OF UNIVERSITY PLACE AND NEAR THE NORTHWESTERLY EDGE OF A FOOTPATH IN WITHAM HILL OAKS APARTMENT COMPLEX.

**NOTES:**

THIS IS A MICROSOFT WORD (VERSION 5.0) DOCUMENT NAMED "15855030" CREATED FROM A BOILER PLATE DOCUMENT NAMED "HISTORY", WHICH HAS A STYLESHEET NAMED "CORNER" ATTACHED TO IT.

**FIRM/AGENCY:** BENTON COUNTY SURVEYOR'S OFFICE  
**ADDRESS:** 360 S.W. AVERY AVE. CORVALLIS OR 97333; PH. 757-6821  
**RESEARCH BY:** CURTIS J. LIESENFELT/MARK E. ANDERSON  
**DATA ENTRY BY:** MARK E. ANDERSON

TOWNSHIP 11 SOUTH, RANGE 5 WEST, WILLAMETTE MERIDIAN; SECTION 28 CORNER \_\_\_\_\_  
DONATION LAND CLAIM ALFRED WITHAM DLC NO. 55 CORNER INTERIOR-SE**COMMON CORNER(S):**

THE NORTH-NORTHWEST CORNER OF THE JOSEPH P. FRIEDLEY DLC NO. 62.

**CORNER RECORDS (PREVIOUS RENEWALS, SURVEYS, ETC.)**

- [01] ORIGINAL GLO SURVEY BY DENNIS HATHORN DATED SEPTEMBER 16, 1856. SET POST WITH 3 BEARING TREES, MEASURED TO THE FACE.
- [02] COUNTY SURVEY NO. 1470 BY W.C. GALLOWAY DATED MAY 5, 1940 (FIELD BOOK NO. 53, PAGE 54). FOUND EVIDENCE OF BEARING TREES, SET PIPE WITH 2 NEW BEARING TREES.
- [03] OLD CORNER RESTORATION BOOK NO. 1 PAGE 226 BY W.C. GALLOWAY DATED MAY 5, 1940. SAME INFORMATION AS RECORD [02].
- [04] CORNER RESTORATION NO. 806. THIS IS A TRANSCRIBED COPY OF RECORD [03] AND MAY CONTAIN ERRORS AND OMISSIONS.
- [05] MAP NO. 11-5-00026 BY BENTON COUNTY SURVEYORS OFFICE (NO DATE GIVEN). PIPE.
- [06] COUNTY SURVEY NO. 3849 BY FRED LEMKE DATED JUNE 4, 1963. FOUND 1 1/4" PIPE, ESTABLISHED 1 NEW BEARING TREE.
- [07] COUNTY SURVEY NO. 3867 BY FRED LEMKE DATED OCTOBER 25, 1963. FOUND 1 1/4" PIPE.
- [08] COUNTY SURVEY NO. 3995 BY FRED LEMKE DATED JANUARY 20, 1964. FOUND 1 1/4" PIPE.
- [09] COUNTY SURVEY NO. 4945 BY FRED LEMKE DATED SEPTEMBER 4, 1970. FOUND 1 1/4" PIPE AND RECORD [06] BEARING TREE.
- [10] COUNTY SURVEY NO. 5167 BY FRED LEMKE DATED SEPTEMBER 13, 1971. SAME INFORMATION AS RECORD [09].
- [11] COUNTY SURVEY NO. 6438 BY DONALD MCCONNELL DATED MARCH 15, 1977. FOUND 1/2" IRON PIPE.
- [12] COUNTY SURVEY NO. 6448 BY GLEN LING DATED AUGUST 22, 1977. FOUND 1 1/4" PIPE.
- [13] COUNTY SURVEY NO. 7176 BY KEN WIGHTMAN AND JIM GRIFFIS DATED NOVEMBER 19, 1980. FOUND 1 1/4" PIPE, SET 5/8" IRON ROD AS AN ACCESSORY.
- [14] COUNTY SURVEY NO. 7480 BY RAY WILSON DATED DECEMBER 9, 1982. FOUND 1 1/4" PIPE.
- [15] CORNER RESTORATION NO. 3104. THIS IS TRANSCRIBED FROM RECORD [14] AND MAY CONTAIN ERRORS AND OMISSIONS.
- [16] COUNTY SURVEY NO. 7664 BY RAY WILSON DATED AUGUST 3, 1984. FOUND 1 1/4" PIPE. THE RECORD DISTANCES QUOTED TO THE RECOVERED BEARING TREES ARE SLOPE DISTANCES PER RECORD [03].
- [17] CORNER RESTORATION NO. 3550 BY DANNA INGRAM-FEHRENBACHER DATED DECEMBER 7, 1988. FOUND 1 1/2" INSIDE DIAMETER IRON PIPE AND THREE ACCESSORIES, SET BRASS CAP AND 1 NEW ACCESSORY.
- [18] CORNER RESTORATION FIELD BOOK NO. 16, PAGE 56, BY CURTIS J. LIESENFELT, DATED MAY 5, 1997. REFERENCED AND REMOVED THE BRASS CAP MONUMENT BECAUSE OF IMMINENT NEW CONSTRUCTION.
- [19] CORNER RESTORATION FIELD BOOK NO. 16, PAGE 56, BY CURTIS J. LIESENFELT, DATED OCTOBER 7, 1997. RESET THE BRASS CAP MONUMENT WITH A MONUMENT BOX OVER IT PRIOR TO NEW PAVING.

**COMMENTS/LOCATION/ETC:**

THIS CORNER WAS VISITED IN JUNE OF 1993 BY CURT LIESENFELT AND MARK ANDERSON AND WAS FOUND TO BE VISUALLY AS PER RECORD [17] WITH THE FOLLOWING EXCEPTIONS.

- 1) THE ORIGINAL 24" OAK (N 13° W 169.62 FEET FACE MEASUREMENT AS PER [01]) IS LYING DOWN NEAR ITS RECORD LOCATION.
- 2) THE 30" OAK (N 38° 22' W 71.0 FEET AS PER RECORD [06]) IS LYING DOWN NEAR ITS RECORD LOCATION.

**NOTES:**

THIS IS A MICROSOFT WORD (VERSION 6.0) DOCUMENT NAMED "15855030" CREATED FROM A BOILER PLATE DOCUMENT NAMED "HISTORY", WHICH HAS A STYLESHEET NAMED "CORNER" ATTACHED TO IT.

**FIRM/AGENCY:** BENTON COUNTY SURVEYOR'S OFFICE  
**ADDRESS:** 360 S.W. AVERY AVE. CORVALLIS OR 97333; PH. 757-6821  
**RESEARCH BY:** CURTIS J. LIESENFELT/MARK E. ANDERSON  
**DATA ENTRY BY:** CURT LIESENFELT

SEE CORNER HISTORY FORM FOR RECORDS ETC.

CORNER RESTORATION FIELD BOOK NUMBER 17 PAGE(S) 32 DATE 05/26/1999  
 TOWNSHIP 11 SOUTH, RANGE 5 WEST, WILLAMETTE MERIDIAN; SECTION 28 CORNER \_\_\_\_\_  
 DONATION LAND CLAIM ALFRED WITHAM NO. 55 CORNER INTERIOR-SE  
 CONDITION REPORT \_\_\_\_\_; REFERENCED OUT XX; RENEWED \_\_\_\_\_; SURVEYED IN \_\_\_\_\_

**LOCATION AND COMMENTS:**

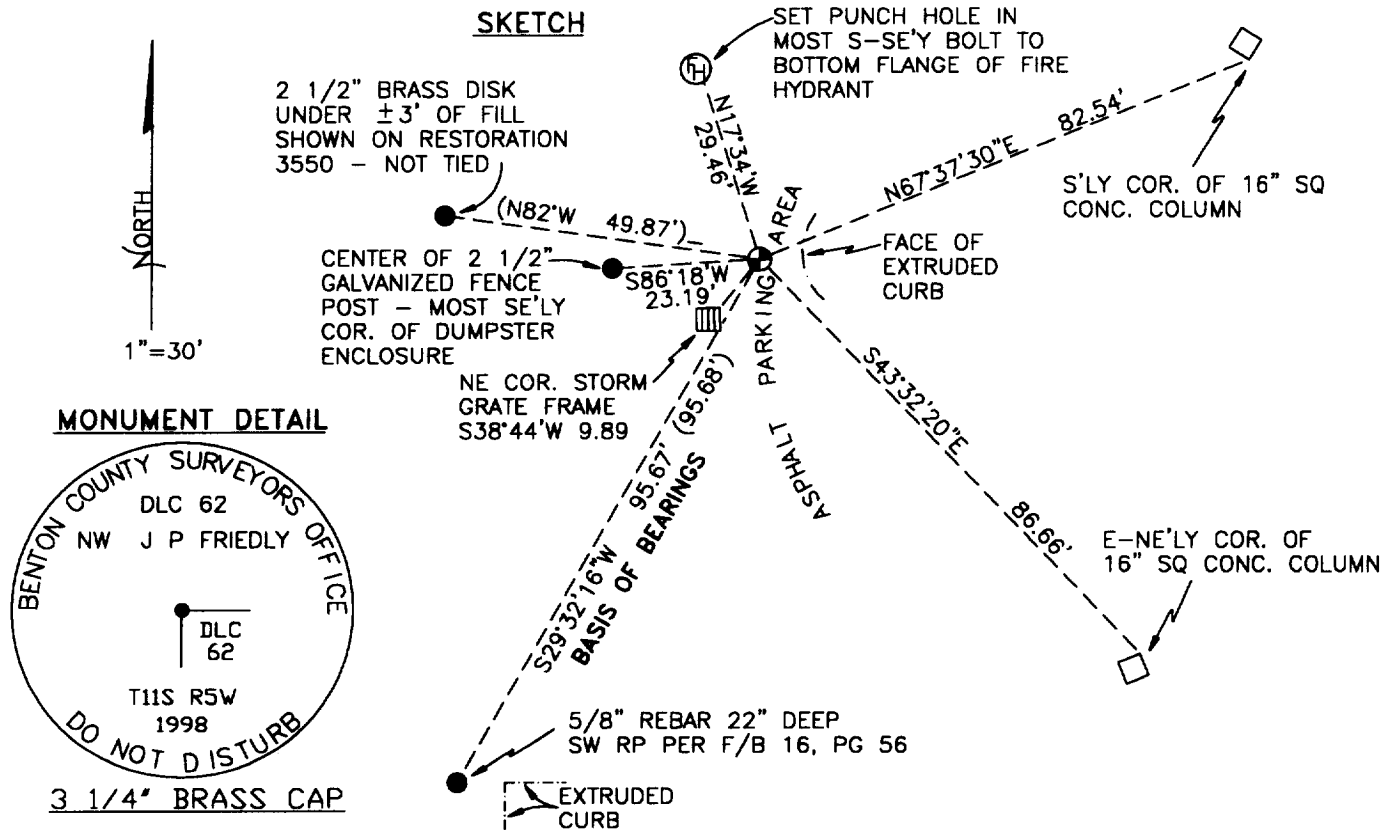
CORNER IS LOCATED IN A MONUMENT BOX IN THE NORTH BOUND LANE OF NW UNIVERSITY PLACE, 6.6' WESTERLY OF FACE OF CURB BETWEEN BUILDING NUMBERS 4580 AND 4590 IN WITHAM HILL OAKS. CORNER MAY BE OK FOR PREMARKING AND GPS CONTROL.

**MONUMENTS AND ACCESSORIES FOUND (CONDITION AND SOURCE):**

- FOUND: 3 1/4" BRASS DISK IN MONUMENT BOX AS PER RECORD [19], IN GOOD CONDITION.
- FOUND: REBAR AND CAP PER RECORD [18], 22" BELOW GROUND SURFACE AND 7.5 FEET WESTERLY OF NORTHWEST CORNER OF EXTRUDED CONCRETE CURB, S29°32'16"W, (BASIS OF BEARINGS) 95.67' (95.68').
- THE 2 1/2" BRASS DISK RECOVERED DURING RECORD [17] AND TIED IN FIELD BOOK 16, PAGE 56 IS UNDER APPROXIMATELY 3 FEET OF FILL AND RIP RAP AND WAS NOT RETIED FOR THIS RESTORATION.

**NEW ACCESSORIES:**

- FOUND: 2 1/2" GALVANIZED FENCE POST, THE MOST SOUTHEASTERLY CORNER OF DUMPSTER ENCLOSURE, S86°18'W, 23.19' (TO CENTER)
- SET: PUNCH HOLE IN MOST SOUTH-SOUTHEASTERLY BOLT ON BOTTOM FLANGE OF FIRE HYDRANT, N17°34'W, 29.46.
- FOUND: SOUTHERLY CORNER OF 16" SQUARE CONCRETE COLUMN, (SOUTHWESTERLY COLUMN OF ENTRANCE TO BUILDING NO. 4580) N67°37'30"E, 82.54'.
- FOUND: EAST-NORTHEASTERLY CORNER OF 16" SQUARE CONCRETE COLUMN, (WEST-SOUTHWESTERLY COLUMN OF ENTRANCE TO BUILDING NO. 4590) S43°32'20"E, 86.66'.
- FOUND: NORTHEAST CORNER OF 2.4' SQUARE STORM GRATE FRAME, S38°44'W, 9.89 FEET.



**NOTES:**

COMPASS DECLINATION IS 20° EAST. ALL MEASURED DISTANCES AND BEARINGS ARE TO THE CENTER OF THE OBJECT, UNLESS OTHERWISE NOTED. ALL BEARING TREES ARE PAINTED AND HAVE A B.T. TAG ATTACHED, FACING THE CORNER UNLESS OTHERWISE NOTED. ALL NEW BEARING TREES HAVE A PLASTIC WASHER (STAMPED "BENTON COUNTY SURVEYOR CORNER RESTORATION") ATTACHED (BY ALUMINUM NAIL) TO THE FACE, BELOW THE "BT" FOR DISTANCE AND ANGLE MEASUREMENT UNLESS OTHERWISE NOTED. ALL SET REBAR ARE 5/8" X 30" AND HAVE A YELLOW PLASTIC CAP (STAMPED "BENTON COUNTY SURVEYOR") ATTACHED TO THE TOP.

THIS DOCUMENT WAS NAMED AND CREATED IN A MANNER SIMILAR TO THE HISTORY FORM. THE NAME OF THE BOILER PLATE IS "MONUMENT". THE BORDER, STAMP AND SKETCH ARE FROM AUTOCAD RELEASE 14.

THIS RESTORATION WAS PERFORMED AT THE DIRECTION AND APPROVAL OF THE BENTON COUNTY/DEPUTY COUNTY SURVEYOR. RW

**FIRM/AGENCY:** BENTON COUNTY SURVEYOR'S OFFICE  
**ADDRESS:** 360 S.W. AVERY AVE. CORVALLIS OR 97333; PH. 757-6821  
**SURVEYOR:** CURTIS J. LIESENFELT, P.L.S.  
**SURVEY CREW:** DAVID M. DEAN, P.L.S.

REGISTERED PROFESSIONAL LAND SURVEYOR

*Curtis J. Liesenfelt*  
 OREGON  
 JULY 17, 1986  
 CURTIS J. LIESENFELT  
 2213

LICENSE RENEWAL 12/31/2000