

C.S. 292  
W.C. Galloway

Angle corner 29.13 chs. d. of the N.W. corner of  
Johnson <sup>Mulkey</sup> D.L.C. #57 T 11-5  
Set  $\frac{3}{4}$ " radius rod of Ford Automobile, Rock west side. orig. car.  
Oak 6" in dia. bears S 22° 47' E. 1.338 chs. distant.  
" 8" " " " S. 67° 25' W. 3.37 " "  
Witness E.P. McFarlan Mar. 14, 1922.

C.S.  
Conti  
by W.C.  
Witness  
Joa. C.  
E.E. C.Continued  
W.C. G.

Interior Cor. of Johnson Mulkey D.L.C. #57 T 11-5.  
<sup>on N. line of claim.</sup>  
Set wagon skain Fences were used as controlling points + Proportional distances.  
Oak 5" in dia. bears N. 70° 20' E. .250 chs. dist.  
" 5" " " " N. 48° 20' W. 1.292 " "  
Witnesses Willard D. Simpson + Byron K. Taylor Jan. 1923.

" Most North N.E. corner of Johnson Mulkey D.L.C. #57 T 11-5.  
Set Glass and bottle 10" under surface in field head E. of Road.  
Alder 15" in dia. S. 20° E. 3.74 chs. gone.  
Ash 15" " " bears S. 61 1/4° E. 2.087 chs. in vase  
Oak 4" " " " S. 70° W. .876 " " road on E. side.  
" Stump " " S. 82 1/4° W. 5.06 " " orig. tree.  
Witness Byron K. Taylor Jan. 13, 1923.

" N.W. corner of Johnson Mulkey D.L.C. #57 T 11-5  
Set 4"x4" Yew stake 30" in 22" in ground, Orig. corner.  
Oak stump 24" N 37° E. .27 chs. only cut a short time, 2 weeks.  
" Snag rotin 24" S. 19° W. .82 " "  
Fir stump 44" S. 19° E. .695 " to heart  
Witness Byron K. Taylor Jan 18, 1923.

C.S.  
by W.  
Witness  
E.C.  
C.L.  
Jan

" Angle in West line of Johnson Mulkey D.L.C. #57 T 11-5  
Set wagon skain Oak 24" stump S. 44 1/4° E. 160 chs. 100' West.  
Oak 4" in dia. bears N. 21° 30' E. .114 chs.  
" 12" " " " N. 57° 40' W. .943 "  
Witness Witness Willard D. Simpson. Jan. 1923.

" Most W. N.W. corner of John Trapp Claim 56 T 11-5  
Two stones north of Gate post Used one most prominent  
3/4" galv. pipe on Line S. 80° 37' E. 4.338 chs.

C.S. #50  
by F.M. Wilson C.S.

N.E. corner of John Trapp D.L.C. #56 T 11-5  
Set 3/4" x 20" pipe  
Oak 18" in dia. bears N. 33° W. 3.65 chs. Old tree.  
" 20" " " " S. 30 1/2° W. 3.78 " "  
" 12" " " " S. 22° W. 2.91 " "

" S.E. corner of John Trapp D.L.C. #38 T 12-5  
Stone in place

Interior corner of Johnson Mulkey DLC 57, Twp. 11-5

795  
940

Reestablishment by W. C. Galloway

January 1923

Set wagon skein. Fences were used as controlling points and proportional di

Oak 5" in diam bears N 70° 20' E .250 chains

Oak 5" in diam bears N 48° 20' W 1.292 chains

Witnesses Willard D. Simpson and Byron K. Taylor

BENTON COUNTY SURVEYORS OFFICE - CORNER RESTORATION

03083

T. 11 S, R. 5 W, W. B. & M., BENTON COUNTY, OREGON

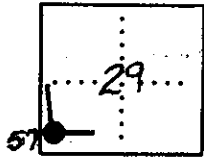
REPORTED BY Ray Wilson

DLC  
SECTION 57

TITLE L.S. 1924

The information shown hereon was taken from  
the referenced county survey. Date: 7/21/90

DATE 10/1/1982



● OFFICIAL CORNER FOUND

○ CORNER SET

INT ELL  
CORNER COMMON TO SEC. DLC, 57 & \_\_\_\_\_

IS WAGON SKELN AS PER C.S. 270 CGALLO-  
WAYS  
DESCRIBE

ADDITIONAL INFORMATION

SEE C.S. 7458

LEGIBLE MARKS ON BEARING OBJECTS

KIND  
SIZE  
BEARING  
DISTANCE  
BT TAG POSTED


OVER

BENTON COUNTY SURVEYORS OFFICE - CORNER RESTORATION

3160

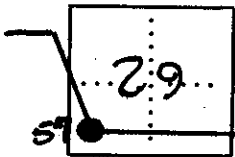
T. 11 S. R. 5 W. W. B. & M., BENTON COUNTY, OREGON

REPORTED BY JOHN RINALDI JR.

SECTION INTERIOR ELL CORNER OF JOHNSON  
MULKEY D.L.C. #57.

TITLE BENTON COUNTY SURVEY CREW CHIEF

DATE AUGUST 2, 1983



● OFFICIAL CORNER FOUND

○ CORNER SET

CORNER COMMON TO SEC. \_\_\_\_\_ & \_\_\_\_\_

IS \_\_\_\_\_ DESCRIBE \_\_\_\_\_

ADDITIONAL INFORMATION

FOUND WAGON SKELIN (3" DIA. STEEL SHAFT WITH  
1" HEX BOLT ON TOP IN CENTER) 6" BELOW GROUND  
SURFACE. FOUND ALSO 3" DIA. (WAS 5")  
DOUBLE TRUNKED WHITE OAK WITH HEALED  
BLAZE 3' ABOVE GROUND SURFACE, BOTH PER  
JANUARY 1973 W.C. GALLOWAY CORNER  
RESTORATION CARD. SAID WAGON SKELIN  
WAS LEFT IN PLACE AS IT WAS SOLID & IN  
GOOD CONDITION.

OVER

LEGIBLE MARKS ON BEARING OBJECTS

FOUND	SET		
HEALED BLAZE	B T		
KIND WHITE OAK	DOUBLE FIR		
SIZE 3" DIA.	6" DIA.		
BEARING N48°10'W.	N34°09'E		
DISTANCE 85.3'	66.8'		
BT TAG POSTED YES	YES		

61 INTERIOR ELL DEC 57 5/10/88

Johnson Mulkey

FD 3" X 15" WAGON SKERN 15"

Below SURFACE.

SET A 2' X 36" OD PIPE "

Below SURFACE IN FENCE LINE

WITH 3/4" BRASS CAP →

FD 36" W. OAK BCBW

BRG N 48° 20' W SW Base

HD 85.30'

FD 6" D-FIR BCBW

BRG N 34° 09' E W Base

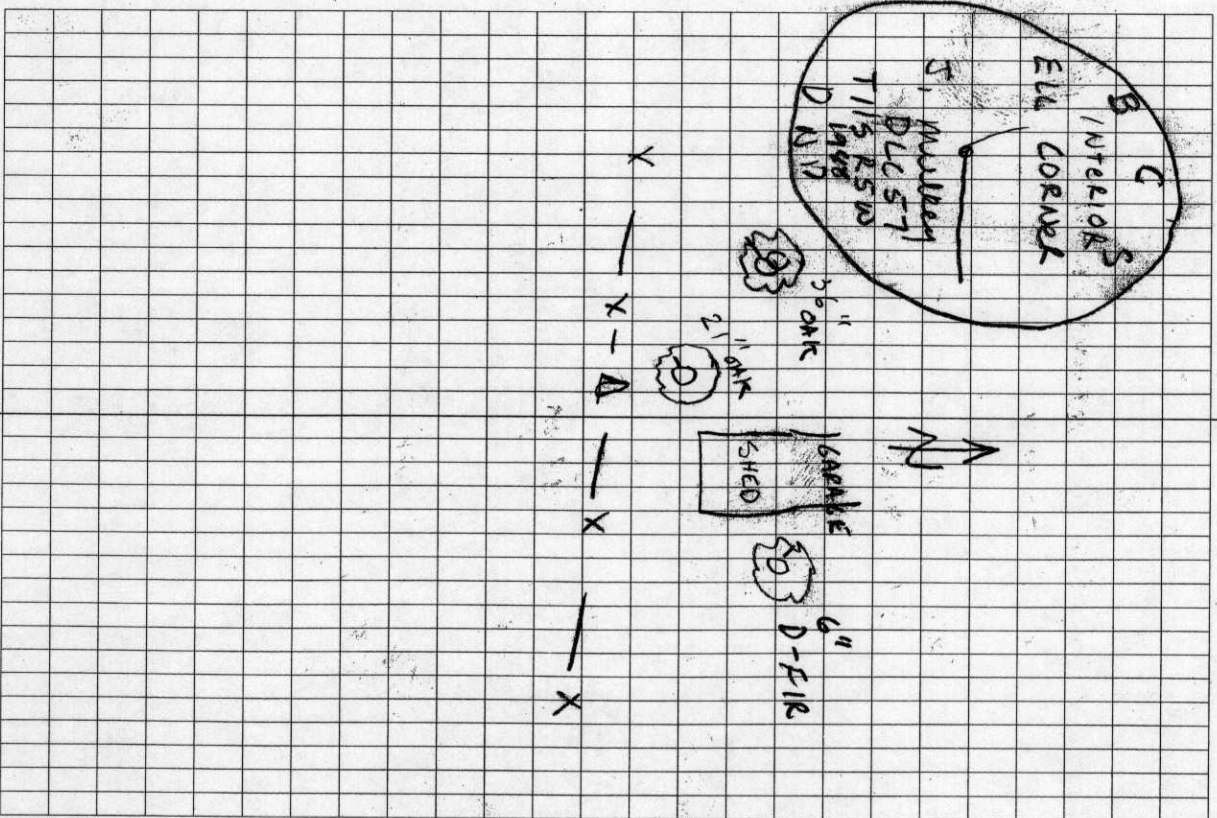
HD 66.80'

NO SET 21" W. OAK BCBW SW Base

BRG N 31° W

HD 18.27

SCRIBES OR BLAZES



3518

115857080

# OREGON CORNER RESTORATION FORM

3518

SECTION INT ELL DLC 57 TOWNSHIP 11 S RANGE 5 W

COUNTY BENTON DATE 5/10/1988

## CORNER DESIGNATION

INTERIOR ELL  
JOHNSON MULKEY  
DLC 57

- CONDITION REPORT ONLY
- NOT FOUND
- RENEWED
- UNRECORDED
- SURVEYED IN
- REFERENCED OUT

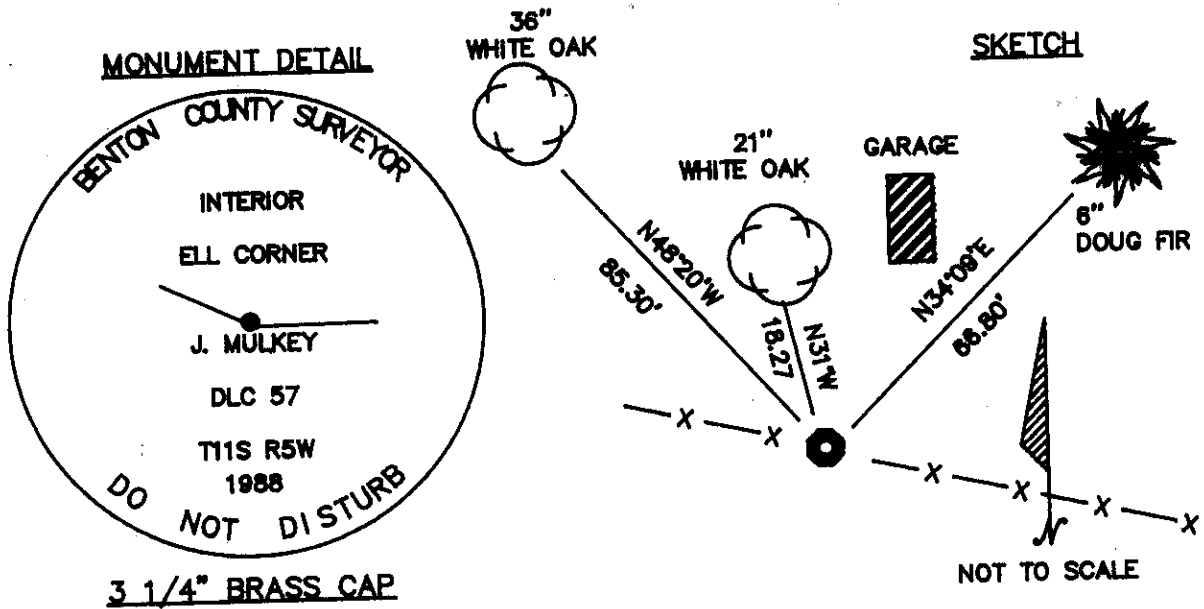
## PREVIOUS RENEWALS/SURVEYS, ETC:

8/2/1983 CORNER RESTORATION No. 3160 BY JOHN RINALDI JR..

JANUARY 1923 CORNER RESTORATION No. 795 BY W. C. GALLOWAY.

## MONUMENTS AND ACCESSORIES FOUND (CONDITION AND SOURCE):

FOUND: 3" X 15" WAGON SKEIN PER CR 795, 15" BELOW SURFACE;  
36" WHITE OAK N48°20'W 85.3', NAILED BCBW TO SW BASE;  
6" DOUGLAS FIR N34°09'E 66.80', NAILED BCBW TO W BASE.



## MONUMENT SET (PROCEDURES AND DESCRIPTION):

SET: 2" X 36" (OD) IRON PIPE WITH 3 1/4" BRASS CAP BELOW SURFACE IN FENCE LINE. CAP IS MARKED AS ABOVE. BURIED WAGON SKEIN HORIZONTAL ON SOUTH SIDE.

## NEW ACCESSORIES :

NOTE: 21" WHITE OAK N31°W 18.27' -NOT SCRIBED- (TREE STANDS ON PRIVATE GROUNDS) NAILED BENTON COUNTY BRASS WASHER IN SW BASE.

BCBW IS A BRASS WASHER STAMPED "BENTON COUNTY SURVEYOR'S OFFICE".

ALL DISTANCES ARE TO BCBW, BEARINGS ARE TO CENTER OF TREE UNLESS OTHERWISE NOTED.

OD = OUTER DIAMETER

## LOCATION AND COMMENTS :

CORNER IS IN FENCE APPROXIMATELY 20' SOUTH OF SW CORNER OF GARAGE.

COMPASS DECLINATION: 20° E

FIRM/AGENCY: BENTON COUNTY PUBLIC WORKS

ADDRESS: 360 S.W. AVERY CORVALLIS, OREGON

PARTY CHIEF: RAYMOND E. WILSON ANDREW FOSTER

NOTES: WITNESSES:

REGISTERED PROFESSIONAL LAND SURVEYOR

*Danna L. Ingram*

OREGON JULY 18, 1882 DANNA L. INGRAM 1995