

116100140

DATE 02/13/2020TOWNSHIP 11 SOUTH, RANGE 6 WEST, WILLAMETTE MERIDIAN; SECTION 31 CORNER WEST 1/4
DONATION LAND CLAIM N/A CORNER N/A**COMMON CORNER(S):**

EAST 1/4 CORNER SECTION 36, TOWNSHIP 11 SOUTH, RANGE 7 WEST

RECORDS (INFORMATION IN *BOLD ITALICS* IS COUNTY STAFFS' INTERPRETATION OF THE RECORD)

BASED ON EXTENSIVE RESEARCH AND RECOVERY OF EVIDENCE, THIS OFFICE HAS DETERMINED THAT MOST GENERAL LAND OFFICE SURVEYORS IN BENTON COUNTY BEFORE 1890 MEASURED TO THE FACE OF BEARING TREES.

- [01] GENERAL LAND OFFICE (GLO) NOTES BY HARVEY GORDON AND JOSIAH W. PRESTON, D.S., DATED SEPTEMBER 9, 1854. SET POST FROM WHICH A R. FIR 80" DIA BEARS *N4°E, 70 LINKS (46.20 FEET)*; MAPLE 4" DIA BEARS *S50°W, 31 LINKS (20.46 FEET)*.
- [02] BENTON COUNTY SURVEY NO. 1293 (OLD NO. 249) FIELD NOTES (FIELD BOOK 55, PAGE 33) BY W. C. GALLOWAY, C.S., DATED OCTOBER 5, 1936. SET *3/4" X 56" IRON ROD FROM FIR 80" DIA (GLO BT) BEARS N4°E, 0.70 CHAINS (46.20 FEET), DOWN; MAPLE GONE. MARKED FIR 28" DIA BEARS N66°E, 0.487 CHAINS (32.14 FEET); MARKED W. FIR 4" DIA BEARS S31°45'E, 0.434 CHAINS (28.64 FEET); MARKED FORKED MAPLE 15" DIA BEARS N85°30'W, 0.360 CHAINS (23.76 FEET); MARKED FIR 17" DIA BEARS N88°30'W, 0.989 CHAINS (65.27 FEET)*.
- [03] BENTON COUNTY CORNER RESTORATION BOOK NO. 1, PAGE 214, BY W. C. GALLOWAY, C.S., DATED OCTOBER 9, 1936. SET A *3/4" IRON ROD 56" LONG FROM FIR 80" DIA (GLO BT) BEARS N4°E, 0.70 CHAINS (46.20 FEET), BURNED DOWN; MAPLE GONE. MARKED FIR 28" DIA (CSBT) BEARS N66°E, 0.487 CHAINS (32.14 FEET); MARKED W. FIR 4" DIA (CSBT) BEARS S31°45'E, 0.434 CHAINS (28.64 FEET); MARKED FORKED MAPLE 15" DIA (CSBT) BEARS N85°30'W, 0.360 CHAINS (23.76 FEET); MARKED FIR 17" DIA (CSBT) BEARS N88°30'W, 0.989 CHAINS (65.27 FEET)*.
- [04] BENTON COUNTY CORNER RESTORATION NO. 894. *TRANSCRIBED FROM RECORD [03] AND MAY CONTAIN ERRORS AND/OR OMISSIONS.*
- [05] BENTON COUNTY MAP NO. 11-6-00015 BY W. C. GALLOWAY, C.S., DATED 1916 AND 1935. *3/4" X 56" IRON ROD. MARKED FIR 28" DIA (CSBT) BEARS N66°E, 0.487 CHAINS (32.14 FEET); MARKED W. FIR 4" DIA (CSBT) BEARS S31-3/4°E, 0.434 CHAINS (28.64 FEET); MARKED FORKED MAPLE 15" DIA (CSBT) BEARS N85-1/2°W, 0.360 CHAINS (23.76 FEET); MARKED FIR 17" DIA (CSBT) BEARS N88-1/2°W, 0.989 CHAINS (65.27 FEET)*.
- [06] BENTON COUNTY SURVEY NO. 1725 (OLD NO. 249) FIELD NOTES (FIELD BOOK 39, PAGES 29-30) BY CURTIS C. HANSON, D.C.S., DATED AUGUST 16, 1945. *CORNER NOT DESCRIBED. TREES OK.*
- [07] STARKER FORESTS MAP FROM STARKER FORESTS FILES BY UNKNOWN DRAFTSMAN, DATED FEBRUARY 14, 1951. *3/4" X 56" IRON ROD. MARKED FIR 28" DIA (CSBT) BEARS N66°E, 0.487 CHAINS (32.14 FEET); MARKED FIR 4" DIA (CSBT) BEARS S31-3/4°E, 0.434 CHAINS (28.64 FEET); MARKED FORKED FIR 15" DIA (CSBT) BEARS N85-1/2°W, 0.360 CHAINS (23.76 FEET); MARKED FIR 17" DIA (CSBT) BEARS N88-1/2°W, 0.989 CHAINS (65.27 FEET)*.
- [08] BENTON COUNTY SURVEY NO. 2425 LOOSE LEAF FIELD NOTES BY MARTIN L. BEYERLEIN, D.C.S., DATED SEPTEMBER 3, 1952. *FOUND TIE BOLT FOR WAGON, 3/4" ROD. TREES STANDING AS PER W.C.G. 1936.*
- [09] BENTON COUNTY SURVEY NO. 2425 MAP BY MARTIN L. BEYERLEIN, D.C.S., DATED SEPTEMBER 28, 1952. *FOUND 3/4" ROD WITH EYE ON TOP. BEARING TREES ALL STANDING PER W.C.G. 1936 SURVEY.*
- [10] STARKER FORESTS MAP FROM STARKER FORESTS FILES BY M. VOMOCIL, DATED JUNE, 1972. *FOUND 1/2" EYE BOLT, WHITE POST.*
- [11] BENTON COUNTY SURVEY NO. 7013 BY ARNOLD BRUBAKER, P.L.S., DATED FEBRUARY 13, 1979. *FOUND 3/4" EYE BOLT BY 4" X 4" WHITE POST. FIR 28" DIA (CSBT) BEARS N66°E, 32.14 FEET, OK; G. FIR 4" DIA (CSBT) BEARS S31-3/4°E, 28.64 FEET, OK; FORKED MAPLE 15" DIA (CSBT) BEARS N85-1/2°W, 23.76 FEET, STUMP; FIR 17" DIA (CSBT) BEARS N88-1/2°W, 65.27 FEET, STUMP. FIR 16" DIA BEARS N44°W, 37.4 FEET, MARKED "BT".*
- [12] BENTON COUNTY CORNER RESTORATION NO. 1164. *TRANSCRIBED FROM RECORD [11] AND MAY CONTAIN ERRORS AND/OR OMISSIONS.*
- [13] BENTON COUNTY CORNER RESTORATION NO. 116100140R2 BY CURTIS J. LIESENFELT, P.L.S., DATED JULY 17, 2001. *FOUND 3/4" IRON ROD WITH AN EYE ON TOP ABOUT 6" ABOVE GROUND SURFACE FOR THE CORNER. THERE IS A 1/2" BY 7" EYE BOLT ATTACHED EYE TO EYE. FOUND THE REMAINS OF A LARGE, BURNED AND DOWNED D. FIR IN THE VICINITY OF THE R. FIR 80" DIA (GLO BT) BEARS N4°E, 46.20 FEET. FOUND PARTLY ROTTED D. FIR STUMP 51" DIA WITH A HEALED FACE (CSBT) BEARS N65°20'E, 32.21 FEET. SET A 6" SPIKE AND BRASS WASHER IN THE CENTER OF THE GROWTH RINGS. FOUND PARTLY ROTTED D. FIR STUMP 40" DIA WITH A HEALED FACE (CSBT) BEARS N89°W, 64.5 FEET. FOUND MOSTLY ROTTED MAPLE STUMP 20" DIA WITH POSSIBLY A ROTTED OUT FACE (CSBT) BEARS N85°45'W, 23.64 FEET. SET A PK NAIL AND BRASS WASHER IN THE NORTHERLY SIDE. FOUND TRUE FIR 21" DIA WITH POSSIBLE AXE MARKS AND A HEALED FACE (CSBT) BEARS S31°50'E, 28.30 FEET. SET AN ALUMINUM NAIL AND PLASTIC WASHER STAMPED "BENTON COUNTY SURVEYOR CORNER RESTORATION" IN THE SOUTHWESTERLY BASE. FOUND D. FIR 36" DIA WITH A HEALED FACE BEARS N47°W, 38.09 FEET. SET AN ALUMINUM NAIL AND PLASTIC WASHER STAMPED "BENTON COUNTY SURVEYOR CORNER RESTORATION" IN THE NORTHEASTERLY BASE. LEFT THE RECOVERED 3/4" IRON ROD IN PLACE AND SET A PUNCH HOLE IN THE TOP CENTER FOR THE CORNER POINT. DID NOT SET A NEW MONUMENT. SET 5/8" X 30" REBAR WITH A 1-3/4" RED PLASTIC CAP MARKED "BENTON COUNTY SURVEYOR'S OFFICE" BEARS N85°46'W, 31.62 FEET, 8" BELOW GROUND SURFACE. SET 5/8" X 30" REBAR WITH A 1-3/4" RED PLASTIC CAP MARKED "BENTON COUNTY SURVEYOR'S OFFICE" BEARS S11°09'W, 23.70 FEET, 6" BELOW GROUND SURFACE. SET 5/8" X 30" REBAR WITH A 1-3/4" RED PLASTIC CAP MARKED "BENTON COUNTY SURVEYOR'S OFFICE" BEARS N8°39'E, 38.30 FEET. SET AN ORANGE FIBERGLASS "SURVEY MARKER" POST 1" NORTHERLY.*

DATE 02/13/2020

[14] BENTON COUNTY SURVEY NO. 10368 BY JIM S. PETERSON, P.L.S., DATED MARCH 6, 2001. FOUND 3/4" EYE BOLT. FOUND ROTTED FIR STUMP (CSBT) BEARS N66°E, 0.487 CHAINS (32.14 FEET), NO MARKS VISIBLE; W. FIR 18" DIA (CSBT) BEARS S31°45'E, 0.434 CHAINS (28.64 FEET), HEALED FACE; ROTTED MAPLE STUMP 20" DIA (CSBT) BEARS N85°30'W, 0.360 CHAINS (23.76 FEET), NO MARKS VISIBLE; FIR STUMP 34" DIA (CSBT) BEARS N88°30'W, 0.989 CHAINS (65.27 FEET), HEALED FACE; FIR 32" DIA BEARS N44°W, 37.4 FEET, HEALED FACE.

FIRM/AGENCY: BENTON COUNTY SURVEYOR'S OFFICE
ADDRESS: 360 S.W. AVERY AVE., CORVALLIS, OR 97333; PH. 541-766-6821
RESEARCH BY: DAVID L. MALONE, P.L.S.
DATA ENTRY BY: SAME

DATE 07/17/2001TOWNSHIP 11 SOUTH, RANGE 06 WEST, WILLAMETTE MERIDIAN; SECTION 31 CORNER WEST 1/4
DONATION LAND CLAIM N/A CORNER**COMMON CORNER(S):**

THE EAST 1/4 CORNER OF SECTION 36 IN TOWNSHIP 11 SOUTH, RANGE 7 WEST.

RECORDS (INFORMATION IN BOLD ITALICS IS COUNTY STAFFS' INTERPRETATION OF THE RECORD)

- [01] ORIGINAL GLO SURVEY BY HARVEY GORDON AND JOSIAH PRESTON, D.S., SURVEYED ON JULY 20, 1854, APPROVED ON FEBRUARY 28, 1855. **SET A POST WITH 2 BEARING TREES, MEASURED TO THE FACE.**
- [02] COUNTY SURVEY NO. 1293 (OLD NO. 249) NOTES (FIELD BOOK NO. 55, PAGE 33) BY W.C. GALLOWAY, C.S., DATED OCTOBER 6, 1936. **FOUND 1 BEARING TREE. SET A 3/4" IRON ROD WITH 4 NEW BEARING TREES.**
- [03] OLD CORNER RESTORATION BOOK NO. 1, PAGE 214, BY W.C. GALLOWAY, DATED OCTOBER 9, 1936. **SIMILAR INFORMATION AS RECORD [02].**
- [04] CORNER RESTORATION NO. 894. **THIS IS A TRANSCRIBED COPY OF RECORD [03] AND MAY CONTAIN ERRORS AND OMISSIONS.**
- [05] MAP NO. 11-6-00015 BY W.C. GALLOWAY, DATED 1935. **3/4" IRON ROD WITH 4 BEARING TREES.**
- [06] STARKER NOTES FROM STARKER FORESTS FILES, NO DATE GIVEN. **3/4" IRON ROD WITH 5 BEARING TREES.**
- [07] STARKER MAP FROM STARKER FORESTS FILES, DATED FEBRUARY 14, 1951. **3/4" IRON ROD WITH 4 BEARING TREES.**
- [08] COUNTY SURVEY NO. 2425 NOTES BY MARTIN BEYERLEIN, D.C.S., DATED SEPTEMBER 3, 1952. **FOUND 3/4" IRON ROD AND TREES STANDING.**
- [09] COUNTY SURVEY NO. 2425 MAP BY MARTIN BEYERLEIN, DATED SEPTEMBER 28, 1952. **FOUND 3/4" IRON ROD WITH EYE AND 5 BEARING TREES.**
- [10] STARKER MAP BY STARKER FORESTS, DATED JUNE, 1972. **FOUND 1/2" EYE BOLT WITH WHITE POST AND A LOCATION TAG.**
- [11] COUNTY SURVEY NO. 7013 BY ARNOLD BRUBAKER, P.L.S., DATED FEBRUARY 13, 1979. **FOUND 1/2" EYE BOLT AND 4 BEARING TREES. CREATED 1 NEW BEARING TREE.**
- [12] CORNER RESTORATION NO. 1164. **THIS IS TRANSCRIBED FROM RECORD [11] AND MAY CONTAIN ERRORS AND OMISSIONS.**

COMMENTS/LOCATION/ETC:**NOTES:**

THIS IS A MICROSOFT WORD 97 DOCUMENT NAMED "16100140" CREATED FROM A BOILER PLATE DOCUMENT NAMED "HISTORY", WHICH HAS A STYLESHEET NAMED "CORNER" ATTACHED TO IT.

FIRM/AGENCY: BENTON COUNTY SURVEYOR'S OFFICE
ADDRESS: 360 S.W. AVERY AVE. CORVALLIS OR 97333; PH. 766-6821
RESEARCH BY: CURTIS J. LIESENFELT, P.L.S.
DATA ENTRY BY: SAME

SEE CORNER HISTORY FORM FOR RECORDS ETC.

CORNER RESTORATION FIELD BOOK NUMBER 19 PAGE(S) 40DATE 07/17/2001TOWNSHIP 11 SOUTH, RANGE 6 WEST, WILLAMETTE MERIDIAN; SECTION 31 CORNER WEST 1/4DONATION LAND CLAIM N/A

CORNER _____

CONDITION REPORT _____;

REFERENCED OUT _____;

RENEWED XX ;

SURVEYED IN _____

LOCATION AND COMMENTS:

THE CORNER IS LOCATED ON A MODERATELY SLOPING, NORTHWESTERLY FACING HILLSIDE, AT THE SOUTHERLY EDGE OF A SMALL CLEARING. IT IS POOR FOR PREMARKING AND PRECISE GPS CONTROL. TO REACH IT GO TO MILEPOST 2.39 ON HARRIS ROAD, WHICH IS ABOUT 120' SOUTHERLY OF THE RAILROAD TRACKS, AND ABOUT 500' SOUTHERLY OF THE COVERED BRIDGE, TURN LEFT (WESTERLY) ON A PRIVATE GRAVEL ROAD, GO 0.05 MILES, STAY RIGHT AT THE FORK, GO 0.11 MILES, STAY LEFT AT THE FORK, GO 0.20 MILES, STAY LEFT AT THE FORK, GO 0.28 MILES, TAKE THE RIGHT FORK UPHILL AND STAY TO THE LEFT FOR 0.77 MILES TO A SHARP LEFT TURN AND THE LOCATION TAG ON THE RIGHT. AN ALTERNATE ROUTE FROM THE LAST INTERSECTION IS TO STAY TO THE LEFT ON THE MAIN GRAVEL ROAD FOR 0.88 MILES SOUTHERLY, TURN RIGHT ON A GRAVEL ROAD AND FOLLOW ABOUT 0.4 MILES NORTHWESTERLY TO A SHARP RIGHT TURN AND THE LOCATION TAG ON THE LEFT.

MONUMENTS AND ACCESSORIES FOUND (CONDITION AND SOURCE):

FOUND: 3/4" IRON ROD WITH AN EYE ON TOP ABOUT 6" ABOVE GROUND SURFACE FOR THE CORNER. THERE IS A 1/2" BY 7" EYE BOLT ATTACHED EYE TO EYE.

(SET 3/4" X 56" IRON ROD PER RECORDS [02] AND [03]).

(3/4" X 56" IRON ROD PER RECORDS [05], AND [07]).

(3/4" IRON ROD PER RECORD [06]).

(FOUND 3/4" ROD PER RECORD [08]).

(FOUND 3/4" ROD WITH EYE ON TOP PER RECORD [09]).

(1/2" EYE BOLT PER RECORD [10]).

(FOUND 3/4" EYE BOLT PER RECORD [11]).

FOUND: THE REMAINS OF A LARGE, BURNED AND DOWNED D. FIR IN THE VICINITY OF THE RECORD [01] FIR.

(80" R. FIR, N 4°E~46.20' PER RECORD [01]).

(DOWN PER RECORD [02]).

(BURNED DOWN PER RECORD [03]).

FOUND: PARTLY ROTTED 51" D. FIR STUMP WITH A HEALED FACE, BEARS N 65°20'E~32.21'. SET A 6" SPIKE AND BRASS WASHER IN THE CENTER OF THE GROWTH RINGS.

(MARKED 28" FIR, N 66°E~32.14' PER RECORDS [02], [03], [05]-[07]).

(STANDING TREE PER RECORDS [08] AND [09]).

(OK PER RECORD [11]).

FOUND: PARTLY ROTTED 40" D. FIR STUMP WITH A HEALED FACE, BEARS N 89°W~64.5'.

(MARKED 17" FIR, N 88°30'W~65.27' PER RECORDS [02], [03], [05]-[07]).

(STANDING TREE PER RECORDS [08] AND [09]).

(STUMP PER RECORD [11]).

FOUND: MOSTLY ROTTED 20" MAPLE STUMP WITH POSSIBLY A ROTTED OUT FACE, BEARS N 85°45'W~23.64'. SET A PK NAIL AND BRASS WASHER IN THE NORTHERLY SIDE.

(MARKED 15" V. MAPLE, N 85°30'W~23.76' PER RECORDS [02], [03], [05] AND [06])

(MARKED FORKED 15" FIR, N 85°30'W~23.76' PER RECORD [07]).

(STANDING TREE PER RECORDS [08] AND [09]).

(STUMP PER RECORD [11]).

FOUND: 21" TRUE FIR WITH POSSIBLE AXE MARKS AND A HEALED FACE, BEARS S 31°50'E~28.30'. SET AN ALUMINUM NAIL AND PLASTIC WASHER IN THE SOUTHWESTERLY BASE.

(MARKED 4" WHITE FIR, S 31°45'E~28.64' PER RECORDS [02], [03], [05]-[07]).

(STANDING TREE PER RECORDS [08] AND [09]).

(OK PER RECORD [11]).

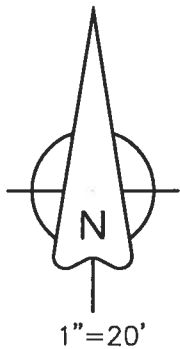
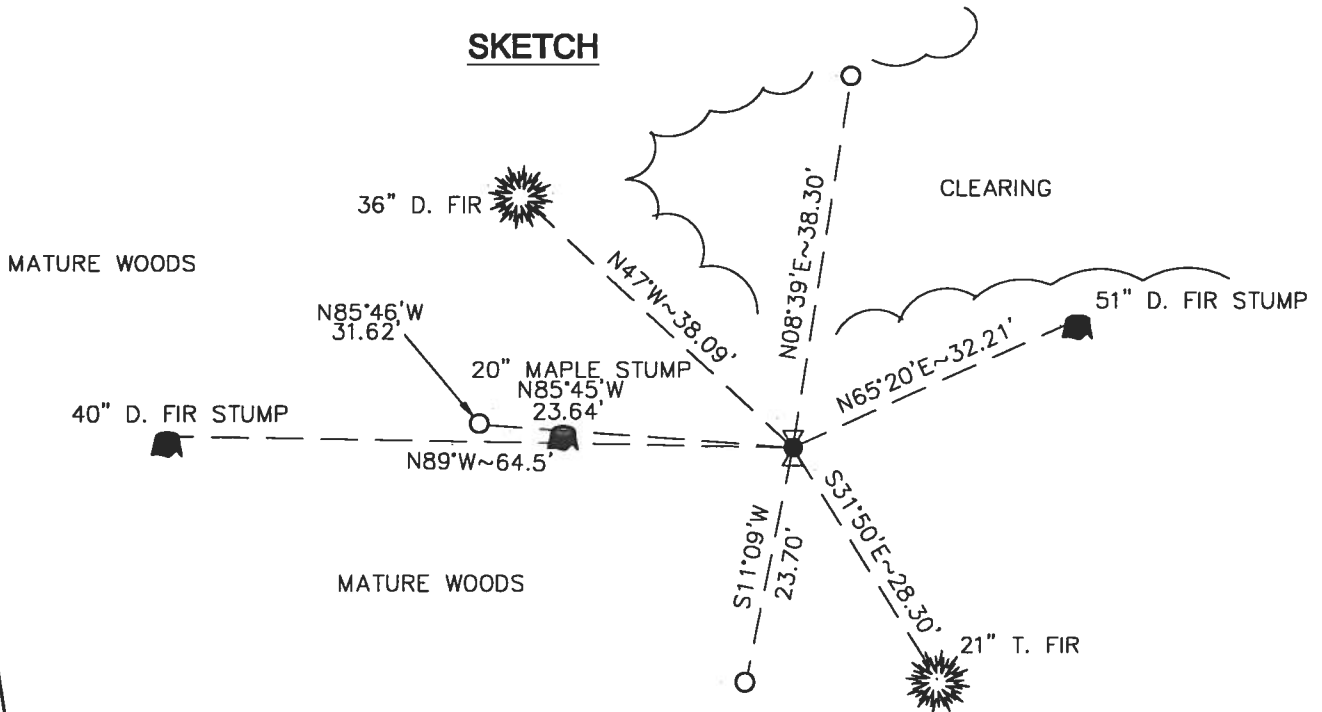
FOUND: 36" D. FIR WITH A HEALED FACE, BEARS N 47°W~38.09'. SET AN ALUMINUM NAIL AND PLASTIC WASHER IN THE NORTHEASTERLY BASE.

(16" FIR MARKED "BT", N 44°W~37.4' PER RECORD [11]).

MONUMENT SET (PROCEDURES AND DESCRIPTION):

LEFT THE RECOVERED 3/4" IRON ROD IN PLACE AND SET A PUNCH HOLE IN THE TOP CENTER FOR THE CORNER POINT. DID NOT SET A NEW MONUMENT.

SKETCH



LEGEND

- SET 5/8" X 30" REBAR WITH A 1 3/4" RED PLASTIC CAP MARKED "BENTON COUNTY SURVEYOR'S OFFICE"
- FOUND MONUMENT AS NOTED

THE BEARINGS ARE BASED ON AN HOUR ANGLE SOLAR OBSERVATION.

NEW ACCESSORIES:

- SET: REBAR (SEE LEGEND) 8" BELOW GROUND SURFACE, BEARS N 85°46'W~31.62'.
- SET: REBAR (SEE LEGEND) 6" BELOW GROUND SURFACE, BEARS S 11°09'W~23.70'.
- SET AN ORANGE FIBERGLASS "SURVEY MARKER" POST 1" NORTHERLY.
- SET A LOCATION TAG ON A 7" ALDER ABOUT 450' SOUTHEASTERLY ON THE WESTERLY SIDE OF A DIRT ROAD.

NOTES:

COMPASS DECLINATION IS 20° EAST. ALL MEASURED DISTANCES AND BEARINGS ARE TO THE CENTER OF THE OBJECT, UNLESS OTHERWISE NOTED. ALL BEARING TREES ARE PAINTED AND HAVE A B.T. TAG ATTACHED, FACING THE CORNER UNLESS OTHERWISE NOTED. ALL NEW BEARING TREES HAVE A PLASTIC WASHER (STAMPED "BENTON COUNTY SURVEYOR CORNER RESTORATION") ATTACHED (BY ALUMINUM NAIL) TO THE FACE, BELOW THE "BT" FOR DISTANCE AND ANGLE MEASUREMENT UNLESS OTHERWISE NOTED.

THIS DOCUMENT WAS NAMED AND CREATED IN A MANNER SIMILAR TO THE HISTORY FORM. THE NAME OF THE BOILER PLATE IS "MONUMENT". THE SKETCH IS FROM AUTOCAD RELEASE 14.

THIS RESTORATION WAS PERFORMED AT THE DIRECTION AND APPROVAL OF THE BENTON COUNTY/DEPUTY COUNTY SURVEYOR. *[Signature]*

FIRM/AGENCY: BENTON COUNTY SURVEYOR'S OFFICE
ADDRESS: 360 S.W. AVERY AVE. CORVALLIS OR 97333; PH. 766-6821
SURVEYOR: CURTIS J. LIESENFELT, P.L.S.
SURVEY CREW: JOSH J. RUDIGER, SURVEY TECHNICIAN

REGISTERED
 PROFESSIONAL
 LAND SURVEYOR

Curtis J. Liesenfelt

OREGON
 JULY 17, 1986
 CURTIS J. LIESENFELT
 2213

LICENSE RENEWAL 12/31/2002

THIS ROW SBI W/14 100140

XO + I SET RB 0.85 FOR N-NE 1/4 RP, BS #2 ENO 3 1/4" IR @ AN EYE ON TOP @ A 1/2" x 7 1/2" EYE BUT ATTACHED EYE TO FIE HD = 38.30 MAG = 511W

SS TRAVEL EDGE OF JUN (30, 3R) AUG. AZ. = 180° 39' 20" BY HR, X

ENO THE REMAINS OF A LARGE BURNED & DOWN D-FIR IN THE VICINITY OF THE REC. [O] FIR

③ PARTLY ROTTEN 20" MAPLE STUMP @ HEALED FACE, BEARS N 65° 20' E ~ 32.21 SET 0.5" SPK + BW IN STR. GROWTH RINGS

" 21" TRU FIR @ POSSIBLE AXE MARKLY HEALED FACE, BEARS S 31° 00' E ~ 28.30 SET ALN + PW IN SWLY BASE

" PARTLY ROTTEN 40" D-FIR STUMP @ HEALED FACE BEARS N 89° W ~ 64.5' ⑨

" 36" D-FIR @ HEALED FACE, BEARS N 47° W ~ 38.09' SET ALN + PW IN NE 1/4 BASE

" MOSTLY ROTTEN 20" MAPLE STUMP @ POSSIBLY A ROTTEN OUT FACE, BEARS N 65° 45' W ~ 23.64 SET PK + BW IN N 1/4 SIDE

— THE REMAINING BEES [O] & [O2] BAYS WERE SEARCHED FOR WITHOUT SUCCESS

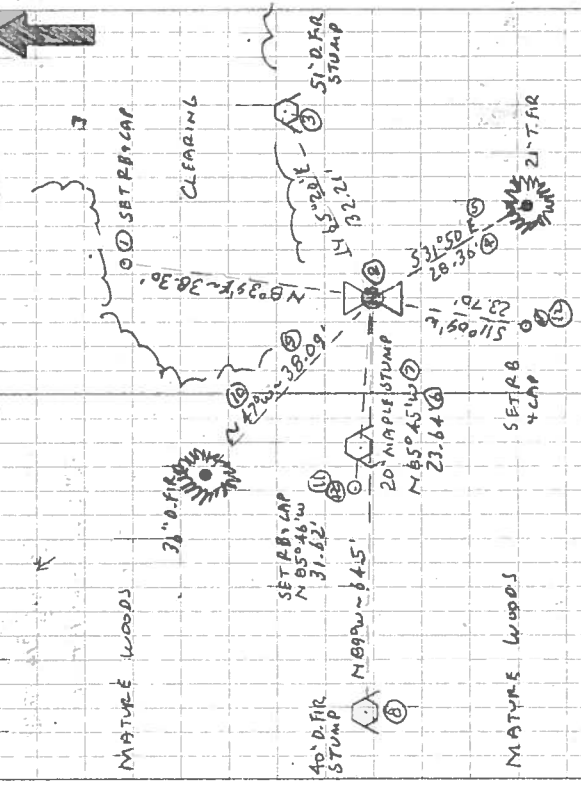
HILD SAID 3 1/4" R SET AT PUNCH HOLE IN T.O.C. ST. DID NOT SET A NEW MON.

⑩ SET: RB + CAP B" BS, BRS N 85° 46' W (MAG = 03) 31.62'

⑪ " " " " S 11° 09' W " = 12° 23.70'

END. AZ. = 180° 30' 53"

7/11/10, CIL JTR, LEICA TER 1105 (5" 2MA + 2PPA) SUNNY, 80°



SET ORANGE FIBRE GLASS OVER "MARKER" POST 1' IN 1/4"

" LOC. TAB ON 2" ALDER ABOUT 45' SE 1/4 ON RT (W/4) SIDE RIAT RD.

THE COR. IS LOCATED ON A MODERATELY SLOPING NW 1/4 FALING HINDSIDE THE S 1/4 EDGE OF A SMALL CLEARING. IT IS POOR FOR PRE-MARKING & PRECISE GPS CONTROL TO REACH IT GO TO MP 2.89 ON HARRIS RD WHICH IS ABOUT 120' S IN OF THE RR TRKS + ABOUT 500' S 1/4 OF THE COVERED BRIDGE. TURN LT (W/4) ON HARRIS RD, #60 0.05 MI, STAY AT 60 0.11 MI, START LT, GO 0.20 MI, NO NEW START LT, GO 0.28 MI, TAKE RT. FORK UP HILL + MONUMENT START LT, FOR 0.77 MI TO A SHARP LT. TURN LT WAS SET AT LOC. TAB ON RT. FROM LAST INT. STAY ON MAIN GRV. ROAD S 1/4 FOR 0.88 MI, GO RT. ON DIAT RD. DOWN HILL FOR ABOUT 0.4 MI TO A SHARP RT. TURN + LOC. TAB ON LT.

11-6 31

BENTON COUNTY SURVEYORS OFFICE - CORNER RESTORATION

1164

T 11 S, R 7 W, W. B. & M., BENTON COUNTY, OREGON

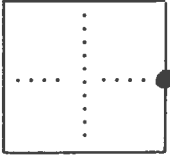
REPORTED BY Arnold Brubaker

SECTION 36

The information shown hereon was taken from the referenced county survey. Date: 7/25/90

TITLE R.L. Surveyor

DATE 12/79



● OFFICIAL CORNER FOUND

○ CORNER SET

1/4 CORNER COMMON TO SEC. 36, 31 & IS 3/4" Eye bolt

DESCRIBE

ADDITIONAL INFORMATION

see C.S. 7013
eye bolt is by 4"x4" white post
Also:
2" Fir N 66° E 32.14'
4" G-fir S 31 3/4° E 28.64'
(15" Forked maple) stump N 85 1/2° W - 23.76'
(17" Fir) stump N 88 1/2° W, 65.27'

OVER

LEGIBLE MARKS ON BEARING OBJECTS

BT			
KIND	Fir		
SIZE	16"		
BEARING	N 44° W		
DISTANCE	37.4		
BT TAG POSTED			

C.S. #249

W.C. Galloway

Witnesses

Rudolph Stewart

Geo. Harris

Gerald Harris

Oct 5, 1936

Witnesses as

above except

Geo. Harris

Oct. 6, 1936

Witnesses

R.I. Stewart

Gerald Harris

Oct. 9, 1936



C.S. 205

W.C. Galloway

Rudolph J. Stewart

Adrian Seits

Sept. 1937.

C.S. #131

Witness

Rudolph Stewart

by W.C. Galloway

Jan. 1936

C.S. #337

Oct. 13, 1937

Witnesses

R. J. Stewart

Adrian Seits

by W.C.G.

C.S. 287

by W.C. Galloway

Thomas Johnston and

Adrian Seits

Jan. 20, 1936

1/4 C 1/4 Sec. Corner between Secs. 30 & 31 T 11-6

Set a 1" Pipe

Mkd. a fir 14" in dia. bears N 4° 30' E. 325 cks.

" " " 14" " " N 66° 30' W. 214 "

" " " 12" " " S. 29° W. 80 " std.

" " " 36" " " N. 33° W. 1.41 " lying down.

1/4 Section Corner between Sections 31 T. 11-6 & 6 T-12-6

Set a 3/4" x 20" bolt Set from an

Oak 10" in dia. bears S. 28° W. .35 std. green (found BTB first sh. mp)

Marked fir 22" in dia. bears N. 27° E. .495

" " 14" " " S. 86° W. .433

1/4 Sec. Corner between Sections 31 T 11-6 & 36 T 11-7

Set a 3/4" iron rod 56" long from (we saw a doe just before getting to corner)

Fir 80" N. 4° E. .70 cks. burned down. (Maple gone)

Mkd. a fir 28" in dia. bears N. 66° E. .487

" a W. " 4" " " S. 31° 45' E. .434

" V. Maple 15" " " N. 85° 30' W. .360

" fir 17" " " N. 88° 30' W. .989

S.E. corner of Smiley Carter D.L.C. 50 T 10-4

Set a 1 1/2" shaft Set from orig. trees,

Marked Fir 22" in dia. bears N. 75° E. .230 (mark for measure N.)

" " 22" " " S. 20° E. .198 (marked on N. for measure)

" Forked Oak 24" " " N. 86° 30' W. 1.104 (spike on N.)

Corner to Secs. 24, 25, 19 & 30 T. 10 S Rs. 4 & 5 W.

Set an angle iron 46" long from orig. trees.

Oak 20" in dia. bears S. 58° 20' E. 2.20 cks. std.

" 18" " " N. 41° 30' W. 2.13 " "

Corner to Sections 28, 29, 32 & 33 T 10-5

Set a 3/4" Galv.

Fir 8" in dia. bears N. 53° 15' E. .272 std. to face.

" 8" " " S. 70° E. .328 " measure to face

Mkd. Maple 9" " S. 18° 20' W. .202

Oak 24" in dia. " N. 47° W. .95 "

Sand stone 2 Ft. x 4 Ft. x 2 North .060 center

Cherry stub 8" in dia. bears S 72° W. .20 std.

1/4 Sec. Cor. between Secs. 4 & 9 T 11-5

Set a pipe From orig. Oak 12" S. 5° E. 100 lbs.

Marked Maple 16" in dia. bears N. 42° E. .371 to face

" Fir 16" " " S. 83° E. .424 chn. to center.

11-6-31

$\frac{1}{4}$ -Section corner between sections 31 Twp. 11-6 and 36, Twp. 11-7

894

Reestablishment by W. C. Galloway

Oct. 9, 1936

Set a $\frac{3}{4}$ " iron rod 56" long

Fir 8 ⁰ " in diam bears N 4° E	.70 chains
Fir 28" in diam bears N 66° E	.487 chains
W. Fir 4" in diam bears S 31°45' E	.434 chains
V. Maple 15" in diam bears N 85° 30' W	.360 chains
Fir 17" in diam bears N 88° 30' W.	.989 chains

1057