

**116100500**

DATE 02/07/2019TOWNSHIP 11 SOUTH, RANGE 6 WEST, WILLAMETTE MERIDIAN; SECTION 7 CORNER SOUTHWEST  
DONATION LAND CLAIM N/A CORNER N/A**COMMON CORNER(S):**NORTHWEST CORNER SECTION 18, TOWNSHIP 11 SOUTH, RANGE 6 WEST  
SOUTHEAST CORNER SECTION 12, TOWNSHIP 11 SOUTH, RANGE 7 WEST  
NORTHEAST CORNER SECTION 13, TOWNSHIP 11 SOUTH, RANGE 7 WEST**RECORDS (INFORMATION IN *BOLD ITALICS* IS COUNTY STAFFS' INTERPRETATION OF THE RECORD)**

BASED ON EXTENSIVE RESEARCH AND RECOVERY OF EVIDENCE, THIS OFFICE HAS DETERMINED THAT MOST GENERAL LAND OFFICE SURVEYORS IN BENTON COUNTY MEASURED TO THE FACE OF BEARING TREES.

- [01] GENERAL LAND OFFICE (GLO) NOTES BY HARVEY GORDON, D.S., AND JOSIAH W. PRESTON, D.S., DATED JULY 19, 1854. *SET POST FROM WHICH A W. OAK 12" DIA BEARS N13-1/2°E, 267 LINKS (176.22 FEET); W. OAK 12" DIA BEARS N6°W, 287 LINKS (189.42 FEET); R. FIR 18" DIA BEARS S50-1/2°W, 644 LINKS (425.04 FEET); R. FIR 28" DIA BEARS S1-1/2°E, 467 LINKS (308.22 FEET).*
- [02] BENTON COUNTY SURVEY NO. 7209 BY ARNOLD BRUBAKER, P.L.S., DATED MAY 30, 1980. *OAK 12" DIA (GLO BT) BEARS N13-1/2°E, 267 LINKS (176.22 FEET), ROOT REMAINS; OAK 12" DIA (GLO BT) BEARS N6°W, 287 LINKS (189.42 FEET), GONE; D. FIR 18" DIA (GLO BT) BEARS S50-1/2°W, 644 LINKS (425.04 FEET), STUMP/SCAR AND BLM TAG WITH NO MARKS; D. FIR 28" DIA (GLO BT) BEARS S1-1/2°E, 467 LINKS (308.22 FEET), SCRIBE MARK VISIBLE. MEASURED FROM FACE OF ORIGINAL BEARING TREES AND SET 2" X 30" PIPE WITH 2-1/2" BRASS CAP. FOUND UNRECORDED BOLT BEARS EAST, 5.65 FEET. D. FIR 6" DIA BEARS S80°W, 44.15 FEET SCRIBED "T11S R7W S13" "BT". D. FIR 12" DIA BEARS S42°E, 34.75 FEET SCRIBED "T11S R6W S18" "BT". D. FIR 14" DIA BEARS N84°E, 4.4 FEET SCRIBED "T11S R6W S7" "BT". D. FIR 14" DIA BEARS N34°W, 20.35 FEET SCRIBED "T11S R7W S12" "BT".*
- [03] BENTON COUNTY CORNER RESTORATION NO. 829. *TRANSCRIBED FROM RECORD [02] AND MAY CONTAIN ERRORS AND/OR OMISSIONS.*
- [04] BENTON COUNTY SURVEY NO. 7249 BY GARY T. JOHNSTON, P.L.S., DATED MARCH 25, 1981. *FOUND 1980 BRASS CAP AND BEARING TREES BY BRUBAKER.*
- [05] BENTON COUNTY CORNER RESTORATION NO. 3858 BY DANNA L. FEHRENBACHER, C.S., DATED DECEMBER 4, 1990. *FOUND 2-1/2" BRASS CAP STAMPED "T11S R7W R6W S12 S7 S13 S18 1980 LS#992" ON A 2" INSIDE DIAMETER IRON PIPE FOR THE CORNER. THERE IS A 2" INSIDE DIAMETER IRON PIPE 5 FEET HIGH STANDING SOUTHEASTERLY 0.9 FOOT FROM THE CORNER AS A GUARD. FOUND FIR 16" DIA WITH AN UPPER AND LOWER HEALED FACE BEARS N84°E, 4.40 FEET. FOUND AN ALUMINUM NAIL IN THE SOUTHERLY BASE. FOUND THE MOSTLY ROTTED REMAINS OF AN OAK ROOT CROWN ABOUT 16" DIA BEARS N16°E, 176.7 FEET. FOUND FIR 13" DIA WITH AN UPPER AND LOWER HEALED FACE BEARS S35°E, 34.75 FEET. FOUND AN ALUMINUM NAIL IN THE SOUTHWESTERLY BASE. FOUND FIR 7" DIA WITH AN UPPER AND LOWER HEALED FACE BEARS S75°W, 44.15 FEET. FOUND AN ALUMINUM NAIL IN THE SOUTHERLY BASE. FOUND FIR 16" DIA WITH AN UPPER AND A LOWER HEALED FACE BEARS N34°W, 20.35 FEET. FOUND AN ALUMINUM NAIL IN THE NORTHEASTERLY BASE. FOUND 1-1/8" SQUARE HEAD BOLT BEARS S87°E, 5.65 FEET. FOUND A PARTLY ROTTED FIR STUMP 48" DIA WITH EVIDENCE OF A HEALED FACE BEARS S54°W, 425.8 FEET. SET ORANGE FIBERGLASS "SURVEY MARKER" POST 1 FOOT NORTHERLY.*
- [06] BENTON COUNTY PARTITION PLAT 1994-19 BY LOREN F. JAY, P.L.S., DATED FEBRUARY 17, 1994. *FOUND 2-1/2" BRASS CAP MARKED AND REFERENCED AS DESCRIBED IN RESTORATION FORM 3858.*

**FIRM/AGENCY:** BENTON COUNTY SURVEYOR'S OFFICE  
**ADDRESS:** 360 S.W. AVERY AVE., CORVALLIS, OR 97333; PH. 541-766-6821  
**RESEARCH BY:** DAVID L. MALONE, P.L.S.  
**DATA ENTRY BY:** SAME

DATE 01/24/2000TOWNSHIP 11 SOUTH, RANGE 06 WEST, WILLAMETTE MERIDIAN; SECTION 07 CORNER SOUTHWEST  
DONATION LAND CLAIM N/A \_\_\_\_\_ CORNER \_\_\_\_\_**COMMON CORNER(S):**

THE NORTHWEST CORNER OF SECTION 18.

THE SOUTHEAST CORNER OF SECTION 12 IN TOWNSHIP 11 SOUTH, RANGE 7 WEST.

THE NORTHEAST CORNER OF SECTION 13 IN TOWNSHIP 11 SOUTH, RANGE 7 WEST.

**RECORDS (INFORMATION IN *BOLD ITALICS* IS COUNTY STAFFS' INTERPRETATION OF THE RECORD)**

- [01] ORIGINAL GLO SURVEY BY HARVEY GORDON AND JOSIAH PRESTON, D.S., APPROVED FEBRUARY 28, 1855. *SET POST WITH 4 BEARING TREES, MEASURED TO THE FACE.*
- [02] COUNTY SURVEY NO. 7209 BY ARNOLD BRUBAKER, P.L.S., DATED MAY 30, 1980. *FOUND 2 BEARING TREES, SET BRASS CAP WITH 4 NEW BEARING TREES.*
- [03] CORNER RESTORATION NO. 829. *TRANSCRIBED COPY OF RECORD [02] AND MAY CONTAIN ERRORS AND OMISSIONS.*
- [04] COUNTY SURVEY NO. 7249 BY GARY JOHNSTON, P.L.S., DATED MARCH 25, 1981. *FOUND BRASS CAP AND 4 BEARING TREES.*
- [05] CORNER RESTORATION NO. 3858 BY DANNA L. FEHRENBACHER, C.S., DATED DECEMBER 4, 1990. *FOUND BRASS CAP AND 7 ACCESSORIES.*
- [06] BENTON COUNTY GIS/DEA MAPPING PROJECT BY TYLER PARSONS, P.L.S., AND RAY WILSON, D.C.S., DATED JULY, 1997. *FOUND BRASS CAP, ESTABLISHED STATE PLANE COORDINATES WITH RTK/GPS.*

**COMMENTS/LOCATION/ETC:****NOTES:**

THIS IS A MICROSOFT WORD 97 DOCUMENT NAMED "16100500" CREATED FROM A BOILER PLATE DOCUMENT NAMED "HISTORY", WHICH HAS A STYLESHEET NAMED "CORNER" ATTACHED TO IT.

**FIRM/AGENCY:** BENTON COUNTY SURVEYOR'S OFFICE**ADDRESS:** 360 S.W. AVERY AVE. CORVALLIS OR 97333; PH. 766-6821**RESEARCH BY:** CURTIS J. LIESENFELT, P.L.S.**DATA ENTRY BY:** SAME

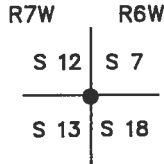
BENTON COUNTY CORNER RESTORATION FORM

3858

SECTION 7 TOWNSHIP 11 S RANGE 6 W DLC \_\_\_\_\_ CORNER SW  
 DATE 12/4/90 CORNER RESTORATION FIELD BOOK NUMBER 2 PAGE 14

CORNER DESIGNATION:

THE SECTION CORNER COMMON TO SECTIONS 7 AND 8, IN T 11 S, R 6 W, AND SECTIONS 12 AND 13, IN T 11 S, R 7 W, WILLAMETTE MERIDIAN.



- XX CONDITION REPORT ONLY
- REFERENCED OUT
- RENEWED
- SURVEYED IN

LOCATION AND COMMENTS:

THE CORNER IS LOCATED ON A HEAVILY WOODED SOUTHEASTERLY SLOPING HILLSIDE, APPROXIMATELY 500 FEET WEST-NORTHWESTERLY FROM A SMALL (UNNAMED) LAKE.

PREVIOUS RENEWALS/SURVEYS, ETC.:

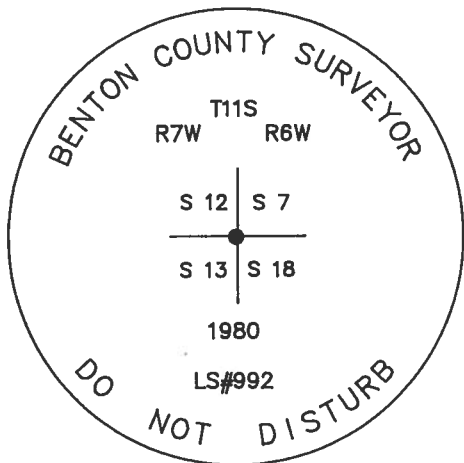
ORIGINAL GLO SURVEY BY HARVEY GORDON AND JOSIAH PRESTON IN 1855.  
 CORNER RESTORATION NO. 829 BY ARNOLD BRUBAKER ON DECEMBER 5, 1980.  
 COUNTY SURVEY NO. 7249 BY GARY JOHNSTON ON MARCH 25, 1981.

MONUMENTS AND ACCESSORIES FOUND (CONDITION AND SOURCE):

- FOUND: 2 1/2" BRASS CAP STAMPED AS SHOWN ON A 2" INSIDE DIAMETER IRON PIPE FOR THE CORNER (CORNER RESTORATION NO. 829). THERE IS A 2" INSIDE DIAMETER IRON PIPE 5 FEET HIGH STANDING SOUTHEASTERLY 0.9 FOOT FROM THE CORNER AS A GUARD.
- FOUND: A FIR 16" IN DIAMETER WITH AN UPPER AND LOWER HEALED FACE, BEARS N 84° E 4.40 FEET (N 84° E 4.4 FEET CORNER RESTORATION NO. 829). FOUND AN ALUMINUM NAIL IN THE SOUTHERLY BASE. FOUND A B.T. TAG ON THE WESTERLY FACE.
- FOUND: THE MOSTLY ROTTED REMAINS OF AN OAK ROOT CROWN ABOUT 16" IN DIAMETER BEARS N 16° E 176.7 FEET (N 13° 30' E 176.22 FEET ORIGINAL GLO FACE MEASUREMENT).
- FOUND: A FIR 13" IN DIAMETER WITH AN UPPER AND LOWER HEALED FACE, BEARS S 35° E 34.75 FEET (S 42° E 34.75 FEET CORNER RESTORATION NO. 829). FOUND AN ALUMINUM NAIL IN THE SOUTHWESTERLY BASE. SET A B.T. TAG ON THE NORTHWESTERLY FACE.
- FOUND: A FIR 7" IN DIAMETER WITH AN UPPER AND LOWER HEALED FACE, BEARS S 75° W 44.15 FEET (S 80° W 44.15 FEET CORNER RESTORATION NO. 829). FOUND AN ALUMINUM NAIL IN THE SOUTHERLY BASE. SET A B.T. TAG ON THE EASTERLY FACE.
- FOUND: A FIR 16" IN DIAMETER WITH AN UPPER AND A LOWER HEALED FACE, BEARS N 34° W 20.35 FEET (N 34° W 20.35 FEET CORNER RESTORATION NO. 829). FOUND AN ALUMINUM NAIL IN THE NORTHEASTERLY BASE. FOUND A B.T. TAG ON THE SOUTHEASTERLY FACE.
- FOUND: 1 1/8" SQUARE HEAD BOLT BEARS S 87° E 5.65 FEET (EAST 5.65 FEET CORNER RESTORATION NO. 829). THERE IS NO RECORD OF THIS BEING SET.
- FOUND: A PARTLY ROTTED FIR STUMP 48" IN DIAMETER WITH EVIDENCE OF A HEALED FACE BEARS S 54° W 425.8 FEET (S 50° 30' W 425.04 FEET ORIGINAL GLO FACE MEASUREMENT). FOUND A B.L.M. B.T. TAG ON THE NORTHERLY FACE. SET A B.T. TAG ON THE NORTHEASTERLY FACE.

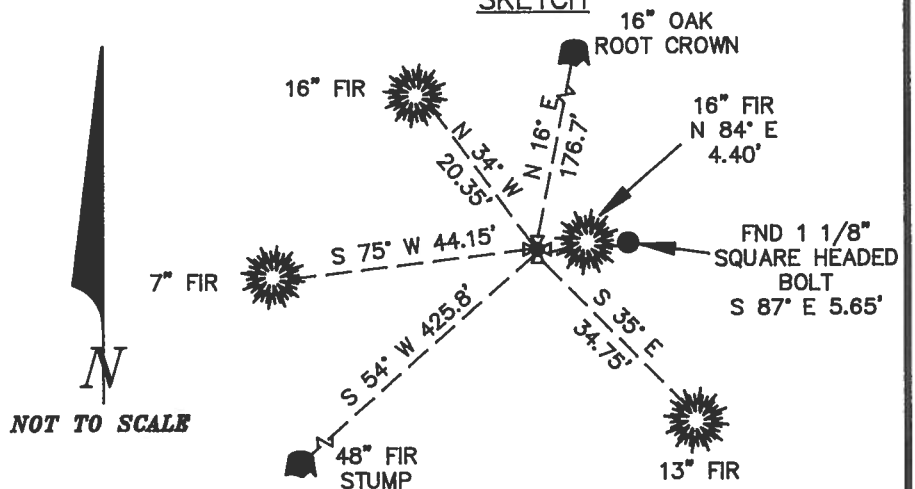
NO OTHER RECORD BEARING OBJECTS WERE RECOVERED.

MONUMENT DETAIL



3 1/4" BRASS CAP

SKETCH



MONUMENT SET (PROCEDURES AND DESCRIPTION):

WILL USE THE CORNER MONUMENT AS RECOVERED.

NEW ACCESSORIES

NO NEW ACCESSORIES WERE ESTABLISHED.

SET: ORANGE FIBERGLASS "SURVEY MARKER" POST 1 FOOT NORTHERLY.

NOTES:

B.C.B.W. IS A BRASS WASHER STAMPED "BENTON COUNTY SURVEYOR". COMPASS DECLINATION IS 20° EAST. ALL MEASURED DISTANCES AND COMPASS BEARINGS ARE TO THE CENTER OF THE OBJECT, UNLESS OTHERWISE NOTED.

FIRM/AGENCY: BENTON COUNTY PUBLIC WORKS  
ADDRESS: 360 S.W. AVERY AVE. CORVALLIS OR. 97333; PH. 757-6821  
PARTY CHIEF: CURTIS J. LIESENFELT  
CREW: MARK E. ANDERSON  
WITNESS:

REGISTERED  
 PROFESSIONAL  
 LAND SURVEYOR

*Danna L. Fehrenbacher*

OREGON  
 JULY 16, 1982  
 DANNA L. FEHRENBACHER  
 1995

T H S R A W SEC 27 SW COR

FND = 2 1/2" B.C. SHA AND STAMPER AS SHOWN ON A 2.12.1.P FOR THE COR. (COR REST NO. B29). THERE IS A YELLOW 3" DIA. P. 5" HIGH STANDING 5/8" DIA. FROM THE COR AS A GUARD.

" A FIR 16" IN DIA. @ AN UPPER & LOWER HEALED FACE BEARS N 80° E ~ 4.40'. (N B 29) & COR REST NO. B29) FND AN ALUM. NAIL IN THE SW FACE. FND A B.T. TAG ON THE NW FACE.

" THE MOSTLY ROTTED REMAINS OF AN OAK ROOT CROWN ABOUT 1 1/2" IN DIA. BEARS N 17° E ~ 17.67'. (N B 29) FND A B.T. TAG ON THE NW FACE.

" A FIR 13" IN DIA. @ AN UPPER & LOWER HEALED FACE BEARS S 35° E ~ 34.75'. (S 42° E ~ 34.75' COR REST NO. B29) FND AN ALUM. NAIL IN THE SW FACE. SET A B.T. TAG ON THE NW FACE.

" A FIR 7" IN DIA. @ AN UPPER & LOWER HEALED FACE BEARS S 75° W ~ 4.15'. (S 80° W ~ 4.15' COR REST NO. B29) FND AN ALUM. NAIL IN THE SW FACE. SET A B.T. TAG ON THE NW FACE.

" A FIR 16" IN DIA. @ AN UPPER & LOWER HEALED FACE BEARS N 34° W ~ 20.35'. (N 43° W ~ 20.35' COR REST NO. B29) FND AN ALUM. NAIL IN THE NW FACE. SET A B.T. TAG ON THE NW FACE.

" 1 1/8" SQ. HEAD BOLT BEARS S 91° E ~ 5.65'. (EAST 5.65' COR REST NO. B29) THERE IS NO RECORD OF THIS BEING SET.

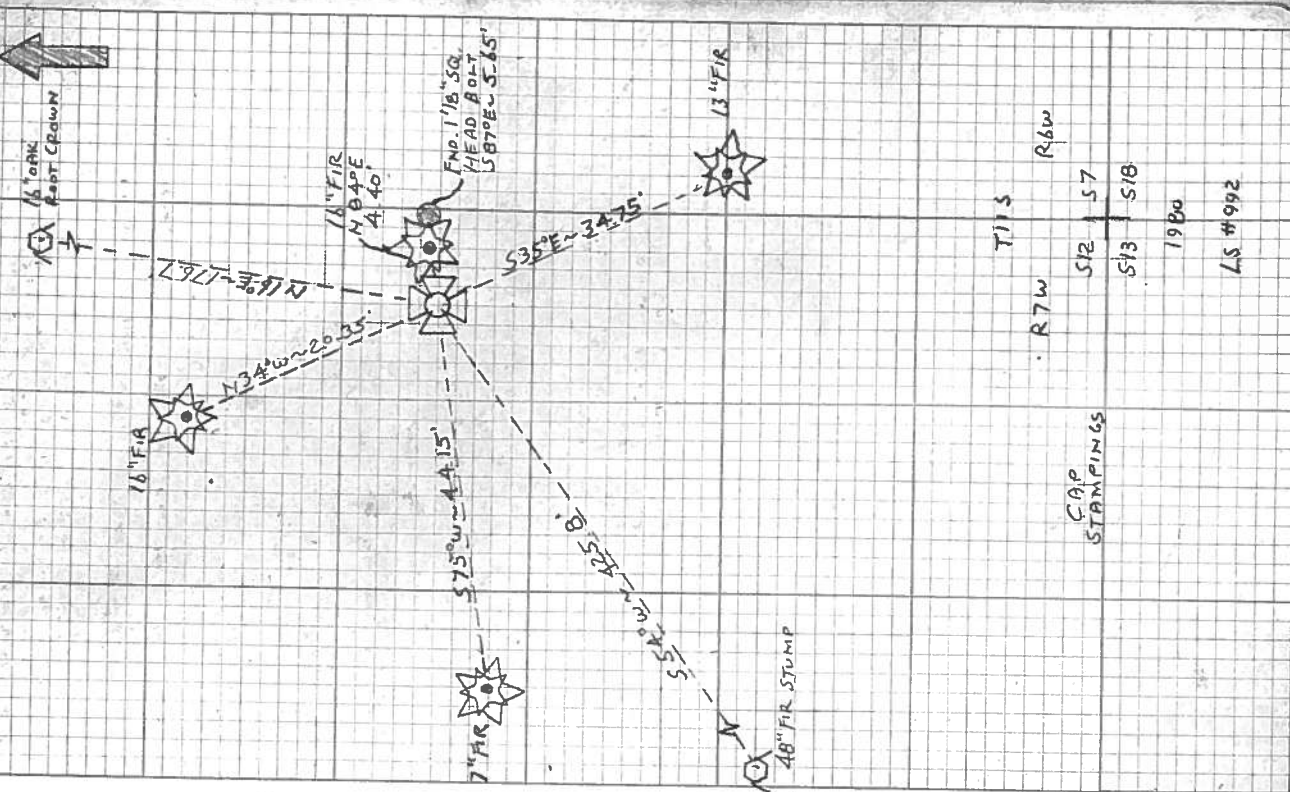
" A PARTLY ROTTED SAWN FIR STUMP 48" IN DIA. @ END OF A HEALED FACE BEARS S 51° W ~ 42.5'. (S 50° 30' W ~ 42.5'. O.R. 6.10'. FACE MEASURE (NEXT) FND A B.T. TAG ON THE NW FACE. SET A B.T. TAG ON THE NW FACE.

NO OTHER RECORD BEARING OBJECTS WERE RECOVERED. WILL USE THE COR MON. AS RECOVERED.

NO NEW ACCESSORIES WERE ESTABLISHED. SET ORANGE FIBER GLASS SURVEY MARKER POST 1' IN 1/4

THE COR. IS LOCATED ON A HEAVILY WOODED 65' x SLIPING HILLSIDE 500' E W-N-W 1/4 FROM A SMALL LAKE (UNNAMED).

12/14/90; C.V.L. MEAD, SIKVA CAMP 20° E. DEC SHURE, CAMP 1/4



7" FIR  
16" FIR  
18" FIR  
13" FIR  
48" FIR STUMP

7113  
R7W  
R6W

CAP STAMPINGS  
S12 157  
S13 158  
1980  
LS #1992

11-6-7

BENTON COUNTY SURVEYORS OFFICE - CORNER RESTORATION

040  
829

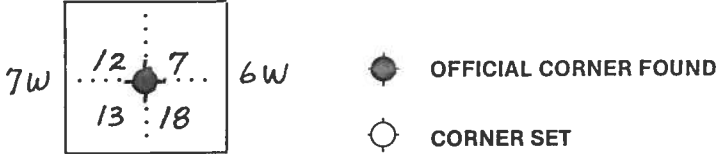
T. 11 S, R. 6 W, W. B. & M., BENTON COUNTY, OREGON

REPORTED BY Arnold Brubaker

SECTION 18

TITLE R.P.L.S. # 992

DATE 12/5/80



Sec. CORNER COMMON TO SEC. 12, 13, 7 & 18  
IS 2" x 30" Pipe / 2 1/2" Brass Cap  
DESCRIBE

ADDITIONAL INFORMATION

Set Brass Cap by measuring from faces  
of Orig. BT's. Fd. unrecorded bolt East 5.65'

New BT's:

6" D-fir S 80°W 44.15 ft "T11SR7WS18"

"BT"/Tag

12" D-fir S 42°E 34.75 ft "T11SR6WS18" "BT"/Tag

14" D-fir N 84°E 4.4 ft "T11SR6WS7" "BT"/Tag

14" D-fir N 34°W 20.35 ft "T11SR7WS12" "BT"/Tag

OVER

LEGIBLE MARKS ON BEARING OBJECTS

	No marks	Fd. Root remains	BT gone	Stump/Scar	Scribe Mk. Visible
KIND	Oak	Oak	D-fir	D-fir	
SIZE	12"	12"	18"	28"	
BEARING	N 13 1/2° E	N 6° W	S 50 1/2° W	S 1 1/2° E	
DISTANCE	176.22'	189.42'	425.04'	308.22'	
BT TAG POSTED	N/A	N/A	BLM tag	No	

with no mks.