

CORNER FILE TRACKING

H:\Survey\Corners\Misc\Filetrac2.doc
06/15/2003

CORNER NUMBER
116140100

STEP	HISTORY()	RESTORATION()
Form Prepared, DB	11/6/06	11/20/06
Field Inspection, DB	11/17/06	11/17/06
Form Checked, DB	12/3/06	12/3/06
Form Edited, DB	12/5/06	12/5/06
Form Signed, DB	12/5/06	12/5/06
Counter Index	11/17/06	11/17/06
GIS Index	11/20/06	11/20/06
Authorize Payment, DB	—	—
Archive Digital Files		
Collect Documents	11/20/06	11/20/06
Scanned	12/6/06	12/6/06
Copy For Filming	12/5/06	12/5/06
Filed, DB		
Finish index (count unit)	11/17/06	11/17/06
Filmed (Archived), DB		

(DB) = Entry needed in database (Access).

COMMENTS:

DATE 11/06/2006TOWNSHIP 11 SOUTH, RANGE 06 WEST, WILLAMETTE MERIDIAN; SECTION 31 CORNER SOUTH 1/4
DONATION LAND CLAIM N/A CORNER N/A**COMMON CORNER(S):**

NORTH 1/4 SECTION 6 T 12 S , R 6 W

RECORDS (INFORMATION IN BOLD ITALICS IS COUNTY STAFFS' INTERPRETATION OF THE RECORD)**BASED ON EXTENSIVE RESEARCH AND RECOVERY OF EVIDENCE, THIS OFFICE HAS DETERMINED THAT MOST GENERAL LAND OFFICE SURVEYORS MEASURED TO THE FACE OF BEARING TREES**

- [01] GENERAL LAND OFFICE (GLO) NOTES BY H GORDON, D S AND J PRESTON, D S , DATED JULY 26, 1854 SET A POST. MARKED A 24" R. FIR N12°E 16 LKS. (10.56 FT.) AND A 10" W. OAK S28°W 35 LKS. (23.10 FT.).
- [02] COUNTY SURVEY NO 1293 (OLD NO 249) FIELD NOTES (BOOK 55, PAGE 27) BY W C GALLOWAY, C S , DATED OCTOBER 6, 1936 SET A 3/4"X20" BOLT. FOUND A FIR STUMP AND A 10" OAK S28°W 0.35 CHS. (23.10 FT.), GREEN AND STANDING. MARKED A 22" FIR N27°E 0.495 CHS. (32.67 FT.) AND A 14" FIR S86°W 0.433 CHS. (28.58 FT.).
- [03] CORNER RESTORATION BOOK NO 1, PAGE 214 BY W C GALLOWAY, C S , DATED OCTOBER 6, 1936 SET A 3/4"X20" BOLT. FOUND A FIR STUMP AND A 10" OAK S28°W 0.35 CHS. (23.10 FT.), GREEN AND STANDING. MARKED A 22" FIR N27°E 0.495 CHS (32.67 FT.) AND A 14" FIR S86°W 0.433 CHS. (28.58 FT.).
- [04] CORNER RESTORATION NO 893 TRANSCRIBED FROM RECORD [03] AND MAY CONTAIN ERRORS AND/OR OMISSIONS.
- [05] BENTON COUNTY MAP NO 11-6-00015 BY W C GALLOWAY, C S , DATED 1935 3/4"X20" BOLT. 10" OAK S28°W 0.35 CHS. (23.10 FT.), STANDING. MARKED A 22" FIR (CSBT) N27°E 0.495 CHS. (32.67 FT.). MARKED 14" FIR (CSBT) S86°W 0.433 CHS. (28.58 FT.).
- [06] COUNTY SURVEY NO 1682 (OLD NO 231) FIELD NOTES (BOOK 102, PAGE 10) BY W C GALLOWAY, C S , DATED SEPTEMBER 3, 1944 FOUND 3/4" BOLT.
- [07] BENTON COUNTY MAP NO 12-6-00006, NO DATE OR DRAFTSMAN GIVEN 3/4" BOLT. 10" OAK (GLO BT) S28°W 23.10 FT., STANDING. 22" FIR (CSBT) N27°E 32.70 FT. 14" FIR (CSBT) S86°W 28.60 FT.
- [08] COUNTY SURVEY NO 2704 BY MARTIN BEYERLEIN, P L S , DATED AUGUST 27, 1955. FOUND A BOLT. FOUND A 10" OAK (GLO BT) S28°W 0.35 CHS. (23.10 FT.), STANDING, A 22" FIR STUMP (CSBT) N27°E 0.495 CHS. (32.67 FT.) AND A 14" FIR STUMP (CSBT) S86°W 0.433 CHS. (28.58 FT.)
- [09] COUNTY SURVEY NO 5602 BY KENNETH WIGHTMAN, P L S , DATED NOVEMBER 7, 1973 FOUND A 3/4" BOLT, 14' SOUTH OF A NEW FENCE. FOUND 21" OAK (GLO BT) S28°W 23.10 FT. AND A 21" FIR N76°E 51.30 FT.

COMMENTS/LOCATION/ETC:**NOTES:**

THIS IS A MICROSOFT WORD 2000 DOCUMENT NAMED "16140100" CREATED FROM A BOILER PLATE DOCUMENT NAMED "HISTORY", WHICH HAS A STYLESHEET NAMED "CORNER" ATTACHED TO IT

FIRM/AGENCY: BENTON COUNTY SURVEYOR'S OFFICE
ADDRESS: 360 S W AVERY AVE CORVALLIS OR 97333, PH 766-6821
RESEARCH BY: SCOTT BOND, SURVEY TECH
DATA ENTRY BY: BERNIE ALTENBACH, SURVEY TECH

BENTON COUNTY CORNER RESTORATION FORM, PAGE 1 OF 2, 116140100R2**SEE CORNER HISTORY FORM FOR RECORDS ETC.**

CORNER RESTORATION FIELD BOOK NUMBER 24 PAGE(S) 71 DATE 11/17/2006
TOWNSHIP 11 SOUTH, RANGE 6 WEST, WILLAMETTE MERIDIAN; SECTION 31 CORNER SOUTH 1/4
DONATION LAND CLAIM NONE CORNER N/A
CONDITION REPORT , REFERENCED OUT ; RENEWED XX; SURVEYED IN

LOCATION AND COMMENTS.

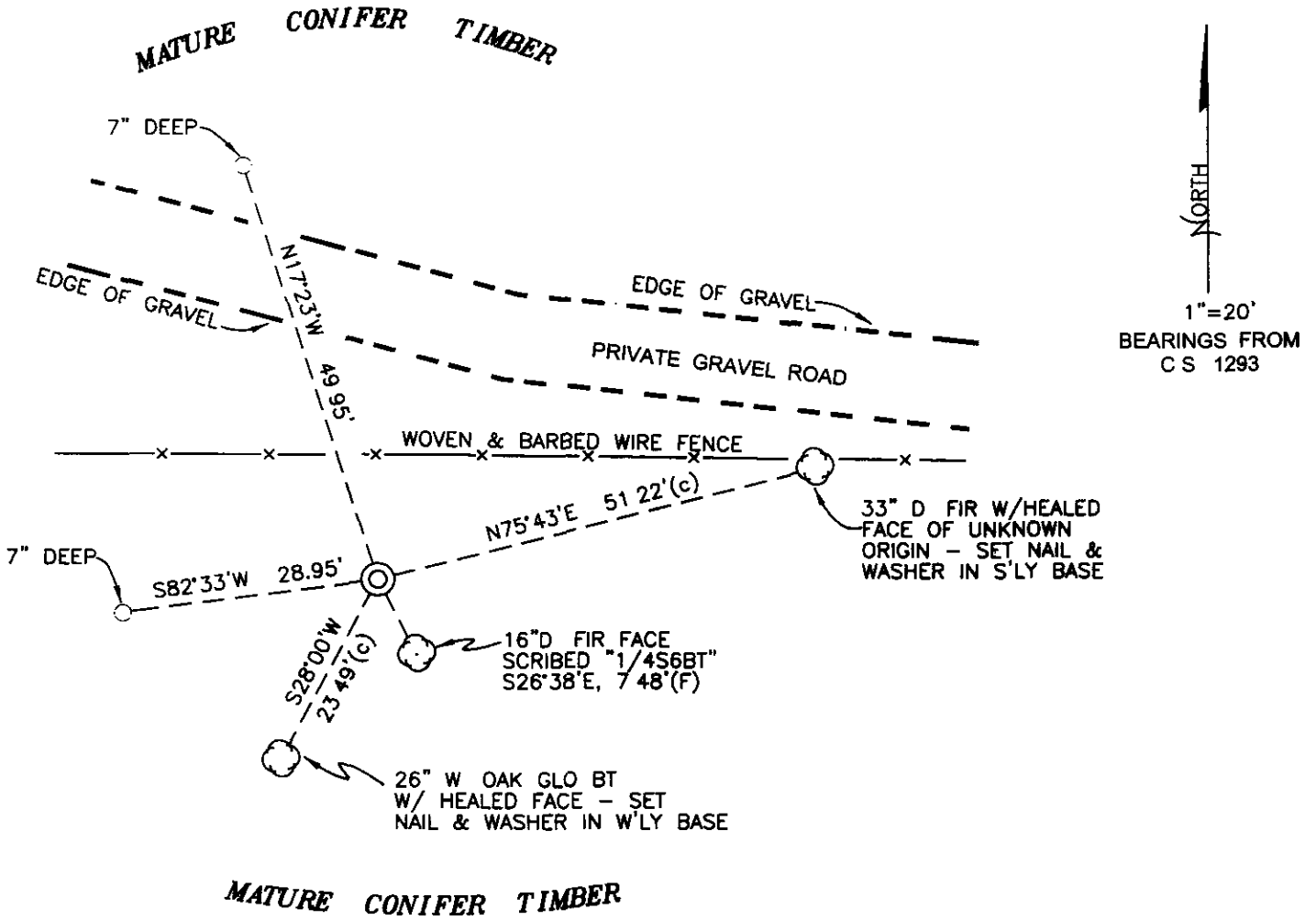
CORNER IS LOCATED IN A MATURE STAND OF SECOND GROWTH D FIR TIMBER, 30 FEET SOUTH OF AN EAST/WEST GRAVEL ROAD AND 14 FEET SOUTH OF AN EAST/WEST WOVEN AND BARBED WIRE FENCE TO REACH CORNER FROM HARRIS COVERED BRIDGE OVER MARYS RIVER, TRAVEL SOUTHERLY ON HARRIS ROAD (COUNTY ROAD NO 16520) FOR 0 10 MILES, THEN RIGHT ON PRIVATE GRAVEL ROAD FOR 0 05 MILES TO "Y" JUNCTION, THEN RIGHT FOR 0 12 MILES TO "Y" JUNCTION, THEN LEFT FOR 0 20 MILES TO "Y" JUNCTION, THEN LEFT FOR 0 07 MILES TO "Y" JUNCTION, THEN RIGHT FOR 0 52 MILES TO "Y" JUNCTION, THEN LEFT FOR 0 33 MILES TO "Y" JUNCTION, THEN RIGHT FOR 0 25 MILES TO "Y" JUNCTION, THEN LEFT FOR 0 06 MILES TO "Y" JUNCTION AT TOP OF RIDGE, THEN RIGHT FOR 0 20 MILES TO "Y" JUNCTION, THEN LEFT FOR 0 15 MILES AND PARK, THEN SOUTH ±30 FEET TO CORNER CORNER IS POOR FOR PREMARKING AND GPS CONTROL

MONUMENTS AND ACCESSORIES FOUND (CONDITION AND SOURCE):

- 1 FOUND 3/4" X 24" BOLT WITH HEX BOLT ON TOP, 5" BELOW GROUND LEVEL FOR CORNER POSITION
(SET 3/4" X 20" BOLT FROM 2 GLO ACCESSORIES PER RECORDS [02] AND [03])
(3/4" X 20" BOLT PER RECORDS [05], [06], [07] AND [09]).
(FOUND BOLT PER RECORD [08])
- 2 FOUND 26" W OAK WITH HEALED FACE, S28°00'W, 23 49 FEET TO CENTER SET ALUMINUM NAIL AND PLASTIC WASHER IN WESTERLY BASE FOR DISTANCE MEASUREMENT **BASIS OF BEARINGS FOR THIS RESTORATION.**
(MARKED 10" OAK, S28°W, 23 10 FEET PER RECORD [01])
(FOUND 10" OAK, GREEN AND STANDING, S28°W, 23 10 FEET PER RECORDS [02] AND [03])
(10" OAK, S28°W, 23 10 FEET PER RECORDS [05], [07] AND [08])
(FOUND 21" OAK, S28°W, 23 10 FEET PER RECORD [09])
- 3 FOUND 33" D FIR WITH HEALED FACE, N75°43'E, 51 22 FEET TO CENTER SET ALUMINUM NAIL AND PLASTIC WASHER IN S'LY BASE FOR DISTANCE MEASUREMENT THE ORIGIN OF THIS ACCESSORY IS UNKNOWN
(FOUND 21" FIR, N76°E, 51 30 FEET PER RECORD [09])

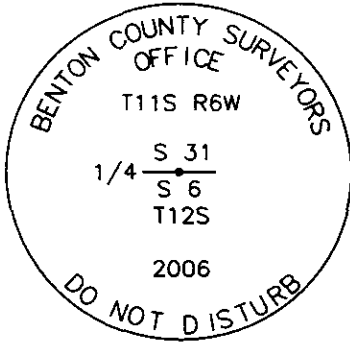
MONUMENT SET (PROCEDURES AND DESCRIPTION):

NO EVIDENCE OF THE GLO MONUMENT (POST) COULD BE FOUND HELD THE BOLT AS SET IN COUNTY SURVEY NO 1293 FOR THE TRUE CORNER POSITON BOLT IS IN GOOD AGREEMENT WITH THE ONE REMAINING GLO ACCESSORY (NOW A 26" W OAK) REMOVED BOLT AND SET A 2" X 31 1/2" GALVANIZED IRON PIPE WITH A 3 1/4" BRASS DISK CONCRETED IN THE TOP, 2" BELOW GROUND LEVEL AND MARKED AS SHOWN ON PAGE 2 OF 2 BURIED 3/4" X 24" BOLT ON THE NORTH SIDE OF NEW MONUMENT IN HORIZONTAL POSITION AND 5" BELOW GROUND LEVEL SET 6 FOOT ORANGE CARSONITE "SURVEY MARKER" POST 0 5 FEET SOUTH OF NEW MONUMENT



MATURE CONIFER TIMBER

MONUMENT DETAIL



3 1/4" BRASS DISK

LEGEND

- SET 5/8" X 30" REBAR WITH YELLOW PLASTIC CAP MKD "BENTON COUNTY SURVEYOR"
- (F) MEASUREMENT TO FACE
- (C) MEASUREMENT TO CENTER
- ⊙ GOVERNMENT MONUMENT SET AS SHOWN
- BEARING TREE AS NOTED
- C.S.B.T COUNTY SURVEYORS BEARING TREE
- GLO GENERAL LAND OFFICE
- * BASIS OF BEARINGS

NEW ACCESSORIES

- 1 SET REBAR (SEE LEGEND) N17°23'W, 49.95 FEET AND 7" BELOW GROUND LEVEL
- 2 SET REBAR (SEE LEGEND) S82°33'W, 28.95 FEET AND 7" BELOW GROUND LEVEL
- 3 FACE SCRIBED 16" D FIR, 1/4 S6BT", S26°38'E, 7.48 FEET TO FACE SET ALUMINUM NAIL AND PLASTIC WASHER IN BOTTOM OF BLAZE BELOW SCRIBING FOR DISTANCE AND ANGLE MEASUREMENT

NOTES

COMPASS DECLINATION IS 20° EAST ALL MEASURED DISTANCES AND BEARINGS ARE TO THE CENTER OF THE OBJECT, UNLESS OTHERWISE NOTED ALL BEARING TREES ARE PAINTED AND HAVE A B.T TAG ATTACHED, FACING THE CORNER UNLESS OTHERWISE NOTED ALL NEW BEARING TREES HAVE A PLASTIC WASHER (STAMPED "BENTON COUNTY SURVEYOR CORNER RESTORATION") ATTACHED (BY ALUMINUM NAIL) TO THE FACE, BELOW THE "BT" FOR DISTANCE AND ANGLE MEASUREMENT UNLESS OTHERWISE NOTED THE DRAWING IS FROM AUTOCAD RELEASE 2006

THIS RESTORATION WAS PERFORMED AT THE DIRECTION AND APPROVAL OF THE BENTON COUNTY SURVEYOR David M. Dean

FIRM/AGENCY BENTON COUNTY SURVEYOR'S OFFICE
 ADDRESS 360 SW AVERY AVE CORVALLIS OR 97333, PH 766-6821
 PRESENT DAVID M DEAN, PLS AND BERNIE ALTENBACH, SURVEY TECH.
 EQUIPMENT LEICA TCR 1105 TOTAL STATION WITH TDS ONBOARD

12/3/06 David M. Dean

REGISTERED PROFESSIONAL LAND SURVEYOR

OREGON
 JULY 13, 1984
 DAVID M DEAN
 2090

RENEWAL DATE 12/31/07

116140100

REMONUMENTING 1/4 6 T12S R6W

NATION TOP

Fd 3/4" x 2 1/2" BOLT 1" FOR COR POSITION

AS SET FROM GLO ACCESSORIES IN C.S. 1293

Fd GLO BT ~ A " W. OAK W/ HEALED FACE

(SEC 6 BT). Fd " D. FIR W/ HEALED FACE

OF UNKNOWN ORIGIN, FIRST NOTED IN CS 5602.

HELD BOLT FOR TRUE COR. - REMOVED BOLT

AND SET 2" x 3 1/2" GIP, w/ 3/14" BRASS DISK

CONC. IN TOP 2" ↓ AND MKD AS

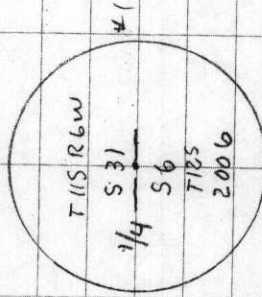
SHOWN. BURIED 3/4" x " BOLT ON N

SIDE OF NEW MON, IN HORZ. POSITION

AND 5" ↓. SET 6' ORANGE CARBONITE

"SURVEY MARKER" POST 0 5 OF NEW

MON.



3/14" BRASS DISK

CLEAR, COOL

40°F, 29.4" Hg

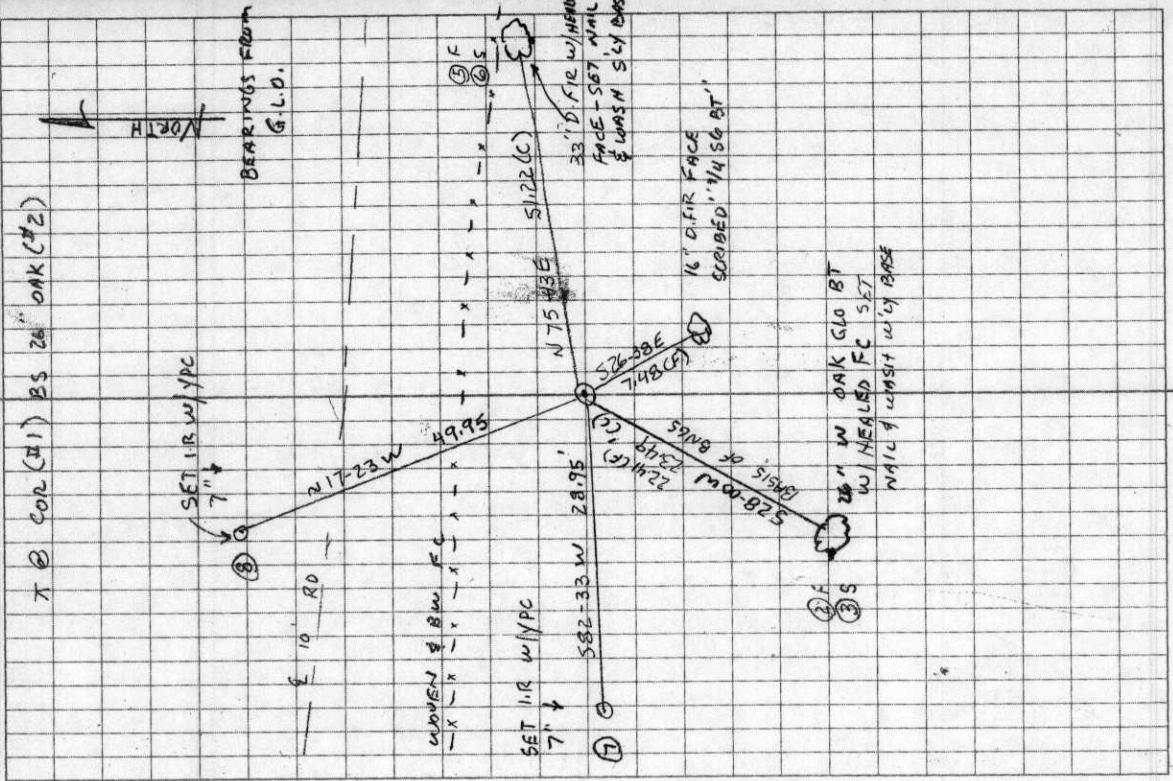
LEICA TCR 105/TDS

11/17/02

D. DEAN

B. ALTENBACH

24/71



C.S. #249

W.C. Galloway

Witnesses

Rudolph Stewart

Geo. Harris

Gerald Harris

Oct 5, 1936

Witnesses as

above except

Geo. Harris

Oct. 6, 1936

Witnesses

R.J. Stewart

Gerald Harris

Oct. 9, 1936

C.S. 205

W.C. Galloway

Rudolph J. Stewart

Adrian Soils

Sept. 1937

C.S. #131

Witnesses

Rudolph Stewart

by W.C. Galloway

Jan. 1936

C.S. #337

Oct. 13, 1937

Witnesses

R.J. Stewart

Adrian Soils

by W.C.G.

C.S. 287

by W.P. Galloway

Thomas Johnston and

Adrian Soils

Jan. 20, 1936

 $\frac{1}{4}$ C $\frac{1}{4}$ Sec. Corner between Secs. 30 & 31 T 11-6

Set a 1" Pipe

Mkd. a fir 14" in dia. bears N 4° 30' E. 325 cks.

" " " 14" " " " N 66° 30' W. 214 "

" " " 12" " " " S. 29° W. 80 " std.

" " " 36" " " " N. 33° W. 1.41 " lying down.

 $\frac{1}{4}$ SECTION Corner between Sections 31 T. 11-6 & 6 T-12-6Set a $\frac{3}{4}$ " x 20" bolt Set from anOak 10" in dia. bears S. 28° W. .35 std. green (found BTB for 30' & 10' ^{MP})

Marked fir 22" in dia. bears N. 27° E. .495

" " 14" " " " S. 86° W. .433

 $\frac{1}{4}$ Sec. Corner between Sections 31 T 11-6 & 36 T 11-7Set a $\frac{3}{4}$ " iron rod 56" long from (we saw a dog just before getting to corner)

Fir 80" N. 4° E. .70 cks. burned down. (Maple gone)

Mkd. a fir 28" in dia. bears N. 66° E. .487

" o.w. " 4" " " " S. 31° 45' E. .434

" V. Maple 15" " " " N. 85° 30' W. .360

" fir 17" " " " N. 88° 30' W. .989

S.E. corner of Smiley Carter D.L.C. 50 T 10-4

Set a 1 1/2" shaft Set from orig. trees,

Marked Fir 22" in dia. bears N. 75° E. 230 (mark for measure N.)

" " 22" " " " S. 20° E. .198 (marked on 1/4 for measure)

" Forked Oak 24" " " " N. 86° 30' W. 1.104 (spike on N.)

Corner to Secs. 24, 25, 19 & 30 T. 10 S Rs 4 & 5 W.

Set an angle iron 46" long from orig. trees.

Oak 20" in dia. bears S. 58° 20' E. 2.20 cks. std.

" 18" " " " " N. 41° 30' W. 2.13 " "

Corner to Sections 28, 29, 32 & 33 T 10-5

Set a $\frac{3}{4}$ " Galv.

Fir 8" in dia. bears N. 53° 15' E. 272 std. to face.

" 8" " " " S. 70° E. 328 " measure to face

Mkd. Maple 9" " " S. 18° 20' W. 202

Oak 24" in dia. " " N. 47° W. .95

Sand stone 2 Ft. x 4 Ft. x 8" North .060 center

Cherry stub 8" in dia. bears S 72° W. .20 std.

 $\frac{1}{4}$ Sec. Cor. between Secs. 4 & 9 T 11-5

Set a pipe From orig. Oak 12" S. 5° E. 100 lks.

Marked Maple 16" in dia. bears N. 42° E. 371 to face

" Fir 16" " " " S. 83° E. 424 ckn. to center

11-6-31

$\frac{1}{4}$ -Section corner between sections 31, Twp. 11-6 and 12-6

893

Reestablishment by W. C. Galloway

October 6, 1936

Set a $\frac{3}{4}$ " x 20" bolt,

Oak 10" in diam bears S 28° W

Fir 22" in diam bears N 27° E

Fir 14" in diam bears S 86° W

.35 chains

.495 chains

.433 chains

Witness Gerald Harris and Rudolph Stewart