

116200500

DATE 02/07/2019TOWNSHIP 11 SOUTH, RANGE 6 WEST, WILLAMETTE MERIDIAN; SECTION 7 CORNER SOUTHEAST
DONATION LAND CLAIM N/A CORNER N/A**COMMON CORNER(S):**SOUTHWEST CORNER SECTION 8
NORTHWEST CORNER SECTION 17
NORTHEAST CORNER SECTION 18**RECORDS (INFORMATION IN *BOLD ITALICS* IS COUNTY STAFFS' INTERPRETATION OF THE RECORD)**

BASED ON EXTENSIVE RESEARCH AND RECOVERY OF EVIDENCE, THIS OFFICE HAS DETERMINED THAT MOST GENERAL LAND OFFICE SURVEYORS IN BENTON COUNTY MEASURED TO THE FACE OF BEARING TREES.

- [01] GENERAL LAND OFFICE (GLO) NOTES BY HARVEY GORDON, D.S., AND JOSIAH W. PRESTON, D.S., DATED AUGUST 4, 1854. *SET POST FROM WHICH A FIR 18" DIA BEARS N6°E, 80 LINKS (52.80 FEET); FIR 20" DIA BEARS N28°W, 128 LINKS (84.48 FEET); W. OAK 8" DIA BEARS S13°W, 116 LINKS (76.56 FEET); FIR 30" DIA BEARS S43°E, 147 LINKS (97.02 FEET).*
- [02] BENTON COUNTY SURVEY NO. 87 (OLD NO. 24) FIELD NOTES (FIELD BOOK 2, PAGE 19) BY F. MARION WILKES, C.S., DATED OCTOBER 30, 1908. *STUMPS STANDING. STONE 14" X 7" X 7". OAK 36" DIA BEARS N71°40'W, 129.4 FEET; FIR 40" DIA BEARS N42°20'E, 281 FEET.*
- [03] BENTON COUNTY CORNER RESTORATION BOOK NO. 1, PAGE 2, BY F. MARION WILKES, C.S., NO DATE GIVEN. *STONE 14" X 7" X 7". OLD STUMPS STILL STANDING. FIR 40" DIA (CSBT) BEARS N42°20'E, 281.0 FEET; OAK 36" DIA (CSBT) BEARS N71°40'W, 129.4 FEET.*
- [04] BENTON COUNTY SURVEY NO. 91 (OLD NO. 24) FIELD NOTES (FIELD BOOK 2, PAGE 28) BY F. MARION WILKES, C.S., DATED NOVEMBER 12, 1908. *CORNER NOT DESCRIBED.*
- [05] BENTON COUNTY SURVEY NO. 1625 (OLD NO. 24) FIELD NOTES (FIELD BOOK 32, PAGE 37) BY W. C. GALLOWAY, C.S., DATED JUNE 10, 1943. *STONE AND STAKE. OAK 36" DIA (CSBT) BEARS N71°40'W, 129.4 FEET; FIR 40" DIA (CSBT) BEARS N42°20'E, 281 FEET, STANDING DEAD SNAG; MARKED FIR 12" DIA BEARS N51°E, 13.7?.*
- [06] BENTON COUNTY MAP NO. 11-6-00007 BY W. C. GALLOWAY, C.S., DATED APRIL, 1916. *STONE 7" X 7" X 14". FIR 40" DIA (CSBT) BEARS N42°20'E, 4.258 CHAINS (281.03 FEET), DEAD; FIR 12" DIA BEARS N51°E, 0.207? CHAINS (13.66 FEET); OAK 36" DIA (CSBT) BEARS N71°40'W, 1.961 CHAINS (129.43 FEET), OK.*
- [07] BENTON COUNTY SURVEY NO. 2263 BY RALPH G. BARNES, P.L.S., DATED APRIL 5, 1951. *CS STONE, OAK STAKE. FIR 22" DIA BEARS S15°E, 0.312 CHAINS (20.59 FEET). NORTH AND SOUTH FENCE 0.24 CHAINS (15.84 FEET) WEST.*
- [08] BENTON COUNTY SURVEY NO. 2365 LOOSE LEAF FIELD NOTES BY CURTIS C. HANSON, C.S., DATED FEBRUARY 9, 1952. *STONE C.S. AND OAK STAKE, VERY OLD. 0.24 CHAINS (15.84 FEET) EAST OF NORTH-SOUTH FENCE. OAK NORTHWEST AND FIR NORTHEAST OK.*
- [09] BENTON COUNTY SURVEY NO. 2365 BY UNKNOWN DRAFTSMAN, DATED FEBRUARY 9, 1952. *FOUND STONE 14" X 14" X 7". FIR 40" DIA (CSBT) BEARS N42°20'E, 4.258 CHAINS (281.03 FEET); OAK 36" DIA (CSBT) BEARS N71°40'W, 3.196 [sic.] CHAINS (210.94 FEET).*
- [10] BENTON COUNTY SURVEY NO. 7209 BY ARNOLD BRUBAKER, P.L.S., DATED MAY 30, 1980. *D. FIR 40" DIA (CSBT) BEARS N42°20'E, 281.03 FEET, SNAG WITH SCAR; D. FIR 12" DIA (CSBT) BEARS N51°E, 13.66 FEET, GONE; OAK 36" DIA (CSBT) BEARS N71°40'W, 129.43 FEET, OK WITH SCAR AND BRAND CHOPPED IN BARK. AT INTERSECTION OF DISTANCE FROM CENTER LINE OF BEARING TREES SET A 2" X 30" PIPE WITH 2-1/2" BRASS CAP. FOUND 7" X 7" X 14" STONE WITH NO MARKS BEARS S21°E, 1.75 FEET FROM BRASS CAP. D. FIR 15" DIA BEARS S67°E, 58.25 FEET, SCRIBED "S17" "BT"; D. FIR 10" DIA BEARS N24°E, 51.5 FEET, SCRIBED "S8" "BT"; D. FIR 3" DIA BEARS S38°W, 19.8 FEET, SCRIBED "XX" "BT"; D. FIR 10" DIA BEARS N36°W, 22.1 FEET, SCRIBED "S7" "BT".*
- [11] BENTON COUNTY CORNER RESTORATION NO. 830. *TRANSCRIBED FROM RECORD [10] AND MAY CONTAIN ERRORS AND/OR OMISSIONS.*
- [12] BENTON COUNTY CORNER RESTORATION NO. 3809 BY DANNA L. FEHRENBACHER, C.S., DATED SEPTEMBER 5, 1990. *FOUND 2-3/8" BRASS CAP MONUMENT STAMPED "T11S R6W S7 S8 S18 S17 1980 OLS# 992" FOR THE CORNER. FOUND 7" X 7" X 12" STONE LAYING ON ITS SIDE ALONG THE SOUTHEAST SIDE OF THE BRASS CAP MONUMENT. FOUND AN OAK STUMP 36" DIA (CSBT) BEARS N72°W, 129.4 FEET. FOUND A ROTTED FIR SNAG 40" DIA (CSBT) BEARS 281.0 FEET. FOUND FIR 14" DIA WITH A HEALED FACE BEARS N36°W, 22.10 FEET. SET A PK NAIL AND BRASS WASHER STAMPED "BENTON COUNTY SURVEYOR" (BCBW) IN THE SOUTHWESTERLY BASE. FOUND FIR 17" DIA WITH A HEALED FACE BEARS N24°E, 51.50 FEET. SET A PK NAIL AND BCBW IN THE SOUTHEASTERLY BASE. FOUND FIR 19" DIA WITH A HEALED FACE BEARS S67°E, 58.25 FEET. SET A PK NAIL AND BCBW IN THE NORTHEASTERLY BASE. FOUND FIR 6" DIA WITH A HEALED FACE BEARS S38°W, 19.80 FEET. FOUND A NAIL IN THE NORTHWESTERLY BASE. FOUND 2" INSIDE DIAMETER X 5 FOOT HIGH YELLOW PAINTED IRON PIPE AS A GUARD 0.8 FOOT SOUTHWESTERLY FROM THE BRASS CAP.*
- [13] BENTON COUNTY PARTITION PLAT 1994-19 BY LOREN F. JAY, P.L.S., DATED FEBRUARY 17, 1994. *FOUND 2-3/8 BRASS CAP MARKED AND REFERENCED AS DESCRIBED IN RESTORATION FORM 3809.*
- [14] BENTON COUNTY SURVEY NO. 10304 BY DAVID M. DEAN, P.L.S., DATED MAY, 2008. *FOUND 2-3/8" BRASS CAP.*

FIRM/AGENCY: BENTON COUNTY SURVEYOR'S OFFICE
ADDRESS: 360 S.W. AVERY AVE., CORVALLIS, OR 97333; PH. 541-766-6821
RESEARCH BY: DAVID L. MALONE, P.L.S.
DATA ENTRY BY: SAME

1116200500

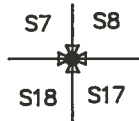
BENTON COUNTY CORNER RESTORATION FORM

3809

SECTION 7 TOWNSHIP 11 S RANGE 6 W DLC _____ CORNER SE
DATE 9/5/90 CORNER RESTORATION FIELD BOOK NUMBER 8 PAGE 25

CORNER DESIGNATION:

THE CORNER COMMON TO SECTIONS 7,
8, 17 AND 18 IN T 11 S, R 6 W,
WILLIMATTE MERIDIAN.



- CONDITION REPORT ONLY
- REFERENCED OUT
- RENEWED
- SURVEYED IN

LOCATION AND COMMENTS:

THE CORNER IS LOCATED IN A LEVEL WOODED AREA 16 FEET EASTERLY FROM A NORTH-SOUTH WOVEN AND BARBED WIRE FENCE, AND NEAR THE NORTHEAST CORNER OF A CHRISTMAS TREE FARM.

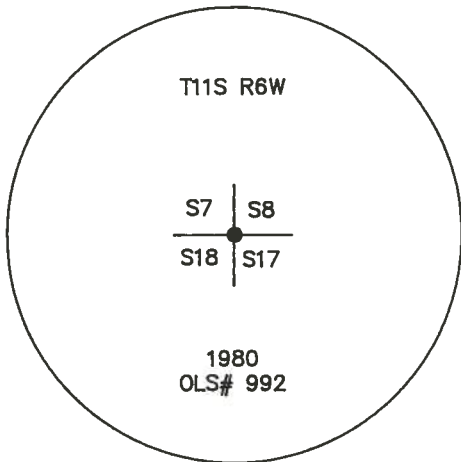
PREVIOUS RENEWALS/SURVEYS, ETC:

ORIGINAL GLO SURVEY BY HARVEY GORDON AND JOSIAH PRESTON IN 1855.
CORNER RESTORATION IN OLD CORNER BOOK NO. 1, PAGE 2 BY F.M. WILKES IN 1908.
COUNTY SURVEY NO. 1625 BY W.C. GALLOWAY ON JUNE 10, 1943.
COUNTY SURVEY NO. 2365 BY CURTIS C. HANSON ON FEBRUARY 9, 1952.
CORNER RESTORATION NO. 830 BY ARNOLD BRUBAKER ON DECEMBER 5, 1980.

MONUMENTS AND ACCESSORIES FOUND (CONDITION AND SOURCE):

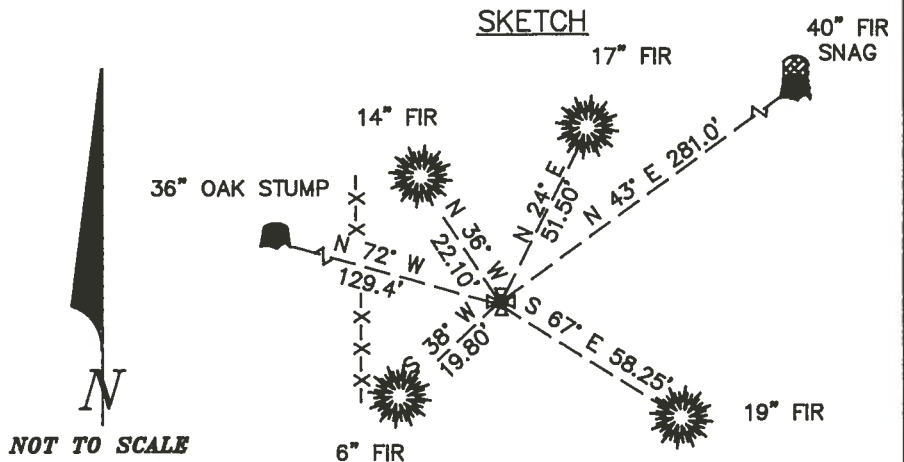
- FOUND: 2 3/8" BRASS CAP MONUMENT STAMPED AS SHOWN FOR THE CORNER (CORNER RESTORATION NO. 830).
- FOUND: 7" X 7" X 12" STONE LAYING ON ITS SIDE ALONG THE SOUTHEAST SIDE OF THE BRASS CAP MONUMENT (OLD CORNER BOOK NO. 1, PAGE 2).
- FOUND: AN OAK STUMP 36" IN DIAMETER BEARS N 72° W 129.4 FEET (N 71° 40' W 129.4 FEET OLD CORNER BOOK NO. 1, PAGE 2). SET A B.T. TAG ON TOP.
- FOUND: A ROTTED FIR SNAG 40" IN DIAMETER BEARS N 43° E 281.0 FEET (N 42° 20' E 281.0 FEET OLD CORNER BOOK NO. 1, PAGE 2). SET A B.T. TAG ON THE SOUTHWESTERLY FACE.
- FOUND: A FIR 14" IN DIAMETER WITH A HEALED FACE BEARS N 36° W 22.10 FEET (N 36° W 22.1 FEET CORNER RESTORATION NO. 830). FOUND A B.T. TAG ON THE SOUTHEASTERLY FACE. SET A PK NAIL AND B.C.B.W. IN THE SOUTHWESTERLY BASE.
- FOUND: A FIR 17" IN DIAMETER WITH A HEALED FACE BEARS N 24° E 51.50 FEET (N 24° E 51.50 FEET CORNER RESTORATION NO. 830). FOUND A B.T. TAG ON THE SOUTHWESTERLY FACE. SET A PK NAIL AND B.C.B.W. IN THE SOUTHEASTERLY BASE.
- FOUND: A FIR 19" IN DIAMETER WITH A HEALED FACE BEARS S 67° E 58.25 FEET (S 67° E 58.25 FEET CORNER RESTORATION NO. 830). FOUND A B.T. TAG ON THE NORTHWESTERLY FACE. SET A PK NAIL AND B.C.B.W. IN THE NORTHEASTERLY BASE.
- FOUND: A FIR 6" IN DIAMETER WITH A HEALED FACE BEARS S 38° W 19.80 FEET (S 38° W 19.8 FEET CORNER RESTORATION NO. 830). FOUND A B.T. TAG ON THE NORTHEASTERLY FACE. FOUND A NAIL IN THE NORTHWESTERLY BASE.
- FOUND: A 2" INSIDE DIAMETER X 5 FOOT HIGH YELLOW PAINTED IRON PIPE AS A GUARD 0.8 FOOT SOUTHWESTERLY FROM THE BRASS CAP.

MONUMENT DETAIL



2 3/8" BRASS CAP

SKETCH



MONUMENT SET (PROCEDURES AND DESCRIPTION):

USED THE 2 3/8" BRASS CAP MONUMENT AS RECOVERED.

NEW ACCESSORIES:

NO NEW ACCESSORIES WERE ESTABLISHED.

NOTES:

B.C.B.W. IS A BRASS WASHER STAMPED "BENTON COUNTY SURVEYOR". COMPASS DECLINATION IS 20° EAST. ALL MEASURED DISTANCES AND COMPASS BEARINGS ARE TO THE CENTER OF THE OBJECT, UNLESS OTHERWISE NOTED.

FIRM/AGENCY: BENTON COUNTY PUBLIC WORKS
ADDRESS: 360 S.W. AVERY AVE. CORVALLIS OR. 97333; PH. 757-6821
PARTY CHIEF: CURTIS J. LIESENFELT
CREW: MARK E ANDERSON
WITNESS:

REGISTERED
PROFESSIONAL
LAND SURVEYOR

Danna L. Fehrenbacher

OREGON
JULY 16, 1982
DANNA L. FEHRENBACHER
1995

T115 R6W SEC 7 SE SW COR

FND: 2 3/8" B.C. MON STAMPED AS SHOWN FOR THE COR (COR REST. NO. 830)

" 7" x 7" x 12" STONE LAYING ON ITS SIDE ALONG THE SE

SIDE OF THE B.C. MON (OLD CORNER BOOK NO. 1 PG. 2)

" AN OAK STUMP 36" IN DIA. BEARS N 72° W ~ 129.4' (N 71° 40' W ~ 129.4 (OLD COR BOOK NO. 1 PG. 2) SET A BT TAG ON TOP

" A ROTTED FIR SNAG 40" IN DIA BEARS N 43° E ~ 202.0 281.

(N 42° 20' E ~ 201.0 OLD COR. BOOK NO. 1 PG. 2) SET A

BT TAG ON SW 1/4 FACE

" A FIR 14" IN DIA. WITH A HEALED FACE BEARS N 38° W ~

221.0 (N 38° W ~ 221.0 COR. REST. NO. 830) FND A BT

" TAG ON THE SE 1/4 FACE. SET A PK NAIL + BLOW IN THE SW 1/4 BASE

" A FIR 17" IN DIA. WITH A HEALED FACE BEARS N 24° E

51.50 (N 24° E ~ 51.5' COR. REST. NO. 830) FND A BT

TAG ON THE SW 1/4 FACE. SET A PK NAIL + BLOW IN THE SE 1/4 BASE

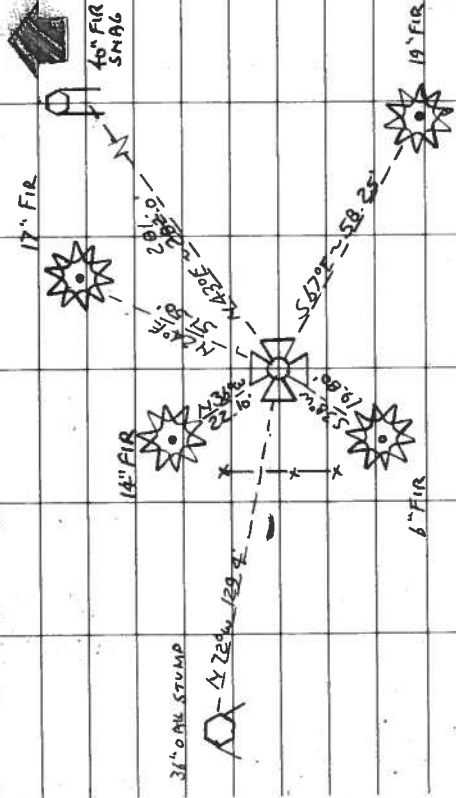
" A FIR 19" IN DIA. WITH A HEALED FACE BEARS S 67° E

58.25 (S 67° E ~ 58.25' COR. REST. NO. 830) FND A BT

TAG ON THE NW 1/4 FACE. SET PK + BLOW IN THE NW 1/4 BASE

8/25

9/5/90. C.T.L. MA Ø; SILVA COMP. 20° E. DEC. P.C., WARM



FND: A FIR 6" IN DIA. @ A HEALED FACE BEARS S 30° W

19.85 (S 30° W ~ 19.8' COR. REST. NO. 830) FND A BT

TAG ON THE NE 1/4 FACE. FND A NAIL IN THE NW 1/4 BASE

FND: A 2" I.D. x 5' HIGH YELLOW IRON PIPE AS A GORRA D.B. SW 1/4 FROM THE B.C.

THE COR. IS LOCATED IN A LEVEL WOODED

AREA 16' E 1/4 FROM A N-S WOVEN

BARBED WIRE FENCE + NEAR

THE NE COR. OF A XMAS

TREE FROM T115 No 6000

FOR PREPARATION + GPS CONTROL

T115 R6W

57 38

58 517

1980

OLS #992

CORNER RESTORATION BOOK NO. 1

21
F. Marion Wilkes

S.E. corner of Sec 35 T_p. 10-4. $\sqrt{21-35}$
 Stove 10" x 12" - 3 2 sts standing, marked 2 new trees.
 An oak 14" in diam, bears. N 40-45 E 32.9'
 " Fir 16" " " S 52-45 E 56.0'

South Exterior Corner of John Q. Thornton D.L.C. # 37. T_p 10-4
 $\sqrt{21-35}$
 3/4 x 40" bolt. Stumps still standing
 Fir 12" in diam bears S 82-25 W 65.8'
 Fir 20" " " S 89-55 E 111.1'

24 ✓
F.M.W.

1/4 Cor bet Sec's 17+18 T_p 11-6
 Set stake, 4" x 4" x 24". Fir orig. standing dogwood gone. $\sqrt{21-35}$
 Fir 30" in diam bears N 56°-W 32.9'

"

Sec cor to Secs 7, 8, 17+18 T_p 11-6
 Stove 14" x 7" x 7" old stumps still standing.
 Fir 40" in diam, bears N 42-20 E 281.0'
 Oak 36" " " N 71-40 W 129.4'

25
F.M.W. ✓

S.E. corner of the Jas. C. Alexander D.L.C. T_p 12-5
 Set rock 12" x 4" x 3", one tree standing (see full book. $\sqrt{21-32}$)
 An Oak 5" in diam bears. N 53-55 E 147.9'
 " Fir 13" " " S 4-40 W? E 30.2'
 " Oak 18" " " S 62-30 W 47.6'
 original oak. " " S 67-45 E

24 ✓
F.M.W.

East Exterior Corner of Jas Woods D.L.C. T_p 11-6
 Stake gone replaced with 1 1/2" or pipe
 Oak stake ~~4" x 4" x 20"~~ wkd C.S. one tree standing, stump standing.
 Original oak 48" in diam bears S 2°-06' E 56.1'
 Fir 10" " " S 12°-W 39.3'
 Oak 8" " " N 11-30 E 235.9'

"

The N.W. Corner of the Phillips D.L.C. #60 T_p 11-6
 set 1 1/2" pipe.
 a Red Fir 6" in diam bears N 51° E 38.9'
 " " " 50" " " S 79-40 E 84.3'
 " " " 36" " " N 33-45 W 88.2'

25 ✓
F.M.W.

N.E. Exterior Corner of Geo W. Roberts D.L.C. # T_p 10-4
 Stove 10 x 6 x 8. Tree + stump. new trees.
 oak 20" in diam bears S 37°-E 41.9'
 oak 11" " " N 85-40 W 23.6'

✓ 26 ✓
F.M.W.

N.W. Corner of the Monroe Hodges D.L.C. 46. T_p 10-4
 Set 3/4" x 28" section of iron pipe. no trees.
 oak 10" in diam bears S 27-20 E 304.1'
 Yew anchor post S - W 3.7'

28 ✓

F.M.W.

W.C. Galloway
Oct, 1938.

Cor to Secs 1, 6, 7+12 T_p 13-5 & 4
 Set 1 1/4" x 40 section of pipe, original trees still standing.
 Oak 30" in dia. S. 5° W. .18 chs. stub std.
 Fir 30" " N. 53 1/2° E. .48 "
 " 30" " S. 83° E. .278

11-6-7

BENTON COUNTY SURVEYORS OFFICE - CORNER RESTORATION

830

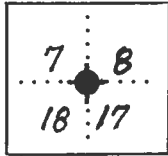
T 11 S, R 6 W, W. B. & M., BENTON COUNTY, OREGON

SECTION 18

REPORTED BY Arnold Brubaker

TITLE RPLS. # 992

DATE 12/5/80



● OFFICIAL CORNER FOUND

○ CORNER SET

Sec. CORNER COMMON TO SEC. 7, 8, 17 & 18
 IS 2" x 30" Pipe / 2 1/2" B.C.
 DESCRIBE

ADDITIONAL INFORMATION

Set B.C. at intersection of dist. from ^{Orig.} E of BTs

New BT's:

15" D-fir S 67° E 58.25 ft. "S 17" "BT"

10" D-fir N 24° E 51.5 ft. "S 8" "BT"

3" D-fir S 38° W 19.8 ft. "X X" "BT"

10" D-fir N 36° W 22.1 ft. "S 7" "BT"

Placed "BT" Tags on all trees

LEGIBLE MARKS ON BEARING OBJECTS

	Scar	BT gone	Scar	No marks
KIND	<u>D-fir Snag</u>	<u>D-Fir</u>	<u>Oak</u>	<u>Stone</u>
SIZE	<u>40"</u>	<u>12"</u>	<u>36"</u>	<u>7"x7"x14"</u>
BEARING	<u>N 42° 20' E</u>	<u>N 51° E</u>	<u>N 71° 40' W</u>	<u>S 21° E</u>
DISTANCE	<u>281.03'</u>	<u>13.66'</u>	<u>129.43'</u>	<u>1.75'</u>
BT TAG POSTED	<u>No</u>	<u>N/A</u>	<u>No</u>	<u>N/A</u>

8" in bark

OVER