

1 1 6 2 4 0 4 0 0

DATE 02/14/2019TOWNSHIP 11 SOUTH, RANGE 6 WEST, WILLAMETTE MERIDIAN; SECTION 17 CORNER SOUTH 1/4
DONATION LAND CLAIM N/A CORNER N/A**COMMON CORNER(S):**

NORTH 1/4 CORNER SECTION 20

RECORDS (INFORMATION IN *BOLD ITALICS* IS COUNTY STAFFS' INTERPRETATION OF THE RECORD)

BASED ON EXTENSIVE RESEARCH AND RECOVERY OF EVIDENCE, THIS OFFICE HAS DETERMINED THAT MOST GENERAL LAND OFFICE SURVEYORS IN BENTON COUNTY MEASURED TO THE FACE OF BEARING TREES.

- [01] GENERAL LAND OFFICE (GLO) NOTES BY HARVEY GORDON, D.S., AND JOSIAH W. PRESTON, D.S., DATED AUGUST 4, 1854. *SET POST FROM WHICH A W. OAK 18" DIA BEARS N24°E, 30 LINKS (19.80 FEET); FIR 16" DIA BEARS S35°E, 111 LINKS (73.26 FEET).*
- [02] BENTON COUNTY SURVEY NO. 548 (OLD NO. 246) FIELD NOTES (FIELD BOOK 21, PAGE 12) BY W. C. GALLOWAY, C.S., DATED APRIL 17, 1916. *SET GUN BARREL AND GLASS. NORTHEAST OAK DOWN. OAK 3" DIA BEARS N0°30'E, .291 CHAINS (19.21 FEET); FIR 13" DIA BEARS N74°E, 0.190 CHAINS (12.54 FEET); FIR 16" DIA (GLO BT) BEARS S35°E, 1.11 CHAINS (73.26 FEET), STANDING DEAD.*
- [03] BENTON COUNTY CORNER RESTORATION BOOK NO. 1, PAGE 106 BY W. C. GALLOWAY, C.S., DATED APRIL 18, 1916. *SET GUN BARREL AND GLASS. NORTHEAST OAK DOWN. FIR DEAD AND GIRDLED. OAK 3" DIA (CSBT) BEARS N0°30'E, .291 CHAINS (19.21 FEET); FIR 13" DIA (CSBT) BEARS N74°E, 0.190 CHAINS (12.54 FEET); FIR 16" DIA (GLO BT) BEARS S35°E, 1.11 CHAINS (73.26 FEET), STANDING DEAD.*
- [04] BENTON COUNTY CORNER RESTORATION NO. 859. *TRANSCRIBED FROM RECORD [03] AND MAY CONTAIN ERRORS AND/OR OMISSIONS.*
- [05] BENTON COUNTY MAP NO. 11-6-00007 BY W. C. GALLOWAY, C.S., DATED APRIL, 1916. *GUN BARREL AND GLASS. OAK 3" DIA (CSBT) BEARS N0°30'E, .291 CHAINS (19.21 FEET); FIR 13" DIA (CSBT) BEARS N74°E, 0.190 CHAINS (12.54 FEET).*
- [06] BENTON COUNTY SURVEY NO. 590 (OLD NO. 246) FIELD NOTES (FIELD BOOK 22, PAGE 67) BY W. C. GALLOWAY, C.S., DATED MAY 15, 1917. *CORNER NOT DESCRIBED.*
- [07] BENTON COUNTY SURVEY NO. 590 MAP BY UNKNOWN DRAFTSMAN, NO DATE GIVEN. *GUN BARREL AND GLASS. OAK 3" DIA (CSBT) BEARS N0°30'E, .291 CHAINS (19.21 FEET); FIR 13" DIA (CSBT) BEARS N74°E, 0.190 CHAINS (12.54 FEET).*
- [08] BENTON COUNTY SURVEY NO. 1547 (OLD NO. 246) FIELD NOTES (FIELD BOOK 55, PAGE 105) BY W. C. GALLOWAY, C.S., DATED OCTOBER 28, 1941. *GUN BARREL. BOTH TREES IN GOOD CONDITION.*
- [09] BENTON COUNTY SURVEY NO. 534 (OLD NO. 246) FIELD NOTES (FIELD BOOK 20, PAGE 49) BY W. C. GALLOWAY, C.S., DATED OCTOBER 28, 1941. *NOTE ADDED TO PREVIOUS SURVEY: GUN BARREL. TREES STANDING.*
- [10] BENTON COUNTY SURVEY NO. 534 (OLD NO. 246) MAP BY UNKNOWN DRAFTSMAN, NO DATE GIVEN. *GUN BARREL AND GLASS. OAK 3" DIA (CSBT) BEARS N0°30'E, .291 CHAINS (19.21 FEET); FIR 13" DIA (CSBT) BEARS N74°E, 0.190 CHAINS (12.54 FEET).*
- [11] BENTON COUNTY SURVEY NO. 7209 BY ARNOLD BRUBAKER, P.L.S., DATED MAY 30, 1980. *FOUND GUN BARREL OUT OF GROUND AND PIECES OF GLASS DOWN TO 1-1/2' BELOW GROUND. OAK (CSBT) GONE. FIR 13" DIA (CSBT) BEARS N74°E, 12.54 FEET, OK. THE POSITION OF THE GLASS AND THE WITNESS OF DON WAGNER INDICATED ORIGINAL DISTANCE WAS MEASURED FROM THE FACE OF THE BEARING TREE. SET 2" PIPE WITH 2-1/2" BRASS CAP AT S74°W, 13.1 FEET FROM CENTERLINE OF D. FIR 38" DIA WITH SCAR. BRASS CAP IS 1 FOOT SOUTH OF FENCE CORNER AND 50 FEET ± NORTHEAST OF GRAVEL ROAD. PLACED GUN BARREL 0.2 FEET WEST OF BRASS CAP. D. FIR 5" DIA BEARS N1°W, 23.1 FEET SCRIBED "S1/4 S17" "BT"; D. FIR 13" DIA BEARS S52°W, 19.7 FEET SCRIBED "N1/4 S20" "BT". THIS CORNER HAS A HISTORY OF BEING PULLED UP SEVERAL TIMES SO I COVERED THE BRASS CAP AND LEFT THE GUN BARREL VISIBLE.*
- [12] BENTON COUNTY CORNER RESTORATION NO. 861. *TRANSCRIBED FROM RECORD [11] AND MAY CONTAIN ERRORS AND/OR OMISSIONS.*
- [13] BENTON COUNTY CORNER RESTORATION NO. 3988 BY CURTIS J. LIESENFELT, P.L.S., DATED AUGUST 27, 1991. *FOUND 2-1/2" BRASS CAP STAMPED "T11S R6W S17 1/4 COR S20 1980 OLS #992" ON A 2" INSIDE DIAMETER IRON PIPE FOR THE CORNER. FOUND THE STOCK END OF A GUN BARREL 10" ABOVE GROUND SURFACE, 0.25 FEET WESTERLY FROM THE RECOVERED 2-1/2" BRASS CAP. ALSO FOUND PIECES OF BROKEN GLASS NEAR THE WESTERLY SIDE OF THE GUN BARREL. FOUND MOSTLY ROTTED D. FIR STUMP 30" DIA (GLO BT) WITH THE SCRIBING "BT" AND PART OF A NOTCH VISIBLE, BEARS S31°30'E, 73.1 FEET. FOUND D. FIR 44" DIA (CSBT) WITH CRUISER MARKS CUT IN TO THE BARK AND A HEALED FACE, BEARS N70°E, 13.08 FEET. SET A PK NAIL AND BRASS WASHER STAMPED "BENTON COUNTY SURVEYOR" (BCBW) IN THE NORTHWESTERLY BASE. FOUND D. FIR 18" DIA WITH A HEALED FACE AND A NAIL IN THE NORTHWESTERLY BASE, BEARS S53°15'W, 19.72 FEET. FOUND D. FIR 8" DIA WITH A HEALED FACE BEARS N3°W, 23.11 FEET. SET A PK NAIL AND BCBW IN THE WESTERLY BASE. USED THE RECOVERED 2-1/2" BRASS CAP FOR THE CORNER. BURIED THE GUN BARREL HORIZONTALLY AND GLASS ALONG THE SOUTH SIDE OF THE BRASS CAP. D. FIR 16" DIA BEARS S24°30'E, 20.22 FEET AND SCRIBED "1/4 S20 BT". SET A PK NAIL AND BCBW IN THE SOUTHWESTERLY BASE. SET ORANGE FIBERGLASS "SURVEY STAKE" POST 1 FOOT SOUTHERLY.*

FIRM/AGENCY: BENTON COUNTY SURVEYOR'S OFFICE
ADDRESS: 360 S.W. AVERY AVE., CORVALLIS, OR 97333; PH. 541-766-6821
RESEARCH BY: DAVID L. MALONE, P.L.S.
DATA ENTRY BY: SAME

CORNER RESTORATION BOOK NO. 1

C.S. # 249

1/4 sec. cor. between secs. 19 & 30, T. 11 S. R. 6 W.
 Set a 5/8" x 32" bolt N.E. oak down
 Fir 18" in dia. bears N. 89° 30' E. .335 chs.
 Oak 10" " " " S. 36° W. .88 " std.
 Witnesses E.C. King April 14, 1916.


C.S. # 190
continued from
page 105C.S. # 246
continued from
page 101


See page 106

Sec. cor. to secs. 17, 18, 19 & 20 T. 11 S. R. 6 W.
 Set 1/4" shaft 26" long orig. cor. all trees dead.
 Fir 18" in dia. bears N. 56° 40' E. .586 chs.
 " 16" " " " S. 50° 30' E. .268 "
 " 18" " " " " S. 46° 30' W. .222 "
 " 15" " " " " N. 68° 30' W. .197 "
 Witnesses R.E. Nelson & B.M. Labare April 18, 1916.

1/4 sec. cor. between secs. 17 & 20 T. 11 S. R. 6 W.
 Set a gun bbl & glass N.E. oak down fir dead girdled.
 Oak 3" in dia. bears N. 0° 30' E. .291 chs.
 Fir 13" " " " " N. 74° E. .190 "
 " 16" " " " " S. 35° E. .111 " std. dead.
 Witnesses R.E. Nelson B.M. Labare, A.J. Price & Hunter April 18, 1916.

N.W. corner of Geo. P. Wren Cl. # 54 T. 11 S. R. 6 W.
 Set 1" iron pin orig. cor.
 Fir 14" in dia. bears N. 75° 30' E. .289 chs.
 Oak 12" " " " " N. 77° E. .57 " std. dead
 Fir 12" " " " " S. 42° E. .56 " "
 Witnesses R.E. Nelson & W.R. Read April 17, 1916.

Most West S.W. corner of Geo. P. Wren Cl. # 54 T. 11 S. R. 6 W.
 Set angle irons bolted together 
 Ash 16" in dia. bears S. 84° 30' E. .274 chs.
 Oak 11" " " " " S. 10° 30' E. .448 "
 Fir 36" " " " " S. 12° E. .48 " std. dead.
 Witnesses W.R. Read B.M. Labare & R.E. Nelson April 19, 1916.

Most N. N.W. cor. of Nahum King Cl. # 53, T. 11 S. R. 6 W.
 Set an iron rod thru a 
 Oak 36" in dia. bears N. 8° E. 5.39 chs. std.
 " 20" " " " " S. 89° 45' E. 10.523 " "
 Witnesses & date as last above.

Interior corner of N. King Cl. # 53 T. 11 S. R. 6 W.
 Set a mouldboard of a plow also another iron SE. against mouldboard
 Oak 24" in dia. bears N. 80° E. 1.45 chs. std. orig. cor.
 Maple 24" " " " " N. 58° W. .38 " " partly broken
 Witnesses R.E. Nelson, W.R. Read & B.M. Labare April 20, 1916.

Most West N.W. cor. of N. King Cl. # 53 T. 11 S. R. 6 W.
 Set land side to a plow. Plow share near on S. orig. cor.
 Fir 18" in dia. bears N. 50° E. .78 chs. std.
 " 20" " " " " S. 58° E. 1.38 " "
 Witnesses & date as last above.

1/4-Section corner between sections 17 and 20, Twp. 11 S., R. 6 W.

859

Reestablishment by W. C. Galloway

April 18, 1916

Set a gun barrel and a glass, N. E. Oak down, fir dead

Oak 3" in diam bears N 0° 30' E

Fir 13" in diam bears N 74° E

Fir 16" in diam bears S 35° E

.291 chains

.190 chains

1.11 chains(std.dead)

Witnesses R. E. Nelson, B. M. LaBear, A. J. Price and Hunter

BENTON COUNTY SURVEYORS OFFICE - CORNER RESTORATION

1017
861

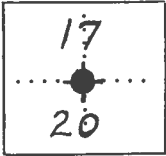
T 11 S, R 6 W, W. B. & M., BENTON COUNTY, OREGON

REPORTED BY Arnold Brubaker

SECTION 17

TITLE R.P.L.S. #992

DATE 12/5/80



● OFFICIAL CORNER FOUND

○ CORNER SET

$\frac{1}{4}$ CORNER COMMON TO SEC. 17 & 20 & _____
IS 2" x 30" Pipe / 2 1/2" Brass Cap
DESCRIBE

ADDITIONAL INFORMATION

Fd. Gun Barrel (per CS#196) out of ground and pieces of glass down to 1 1/2" below ground. The position of the glass and the witness of Don Wagner indicated Orig. distance was measured from face of BT's. Placed barrel 0.2' West of B.C.

New BT's:

5" D-fir N1°W 23.1 ft. "S 1/4 S17" BT / Tag

13" D-fir S52°W 19.7 ft. "N 1/4 S20" BT / Tag

OVER

LEGIBLE MARKS ON BEARING OBJECTS

| | | | |
|---------------|----------|--|--|
| | | | |
| | | 13.1 ft. From E of 38" tree with scar | |
| | BT gone | | |
| KIND | Oak | D-fir | |
| SIZE | 3" | 13" | |
| BEARING | N10°30'E | N74°E | |
| DISTANCE | 19.21' | 12.54' | |
| BT TAG POSTED | N/A | No | |

BENTON COUNTY CORNER RESTORATION FORM

3988

TOWNSHIP 11 S RANGE 6 W SECTION 17 D.L.C. CORNER S 1/4
 DATE 8/27/91 CORNER RESTORATION FIELD BOOK NUMBER 10 PAGE(S) 51

CORNER DESIGNATION:

THE QUARTER CORNER COMMON TO SECTIONS 17 AND 20,
 IN T 11 S, R 6 W, WILLAMETTE MERIDIAN.



- _____ CONDITION REPORT ONLY
- XX REFERENCED OUT
- _____ RENEWED
- _____ SURVEYED IN

LOCATION AND COMMENTS:

THE CORNER IS LOCATED AT THE INTERSECTION OF AN EAST-WEST AND NORTH WOVEN AND BARBED WIRE FENCE AND 50 FEET NORTHEASTERLY FROM THE CENTERLINE OF AN ACTIVE 12 FOOT WIDE GRAVEL ROAD.

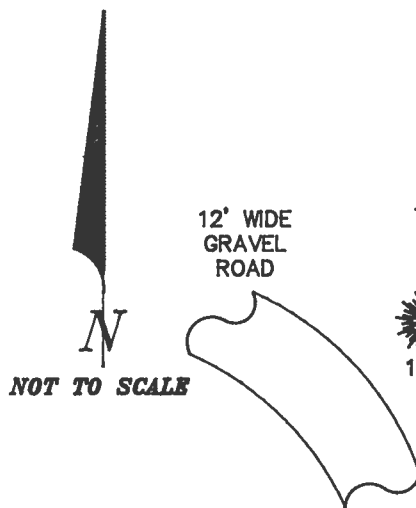
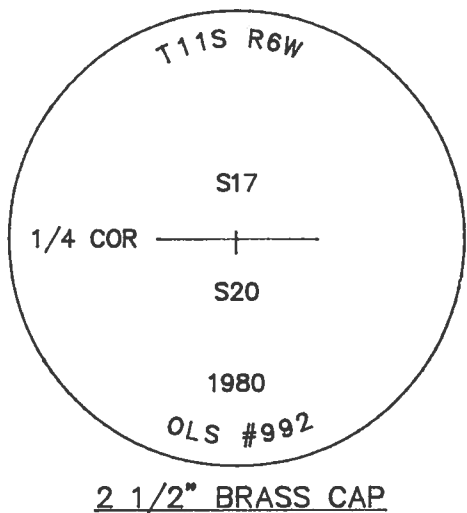
PREVIOUS RENEWALS/SURVEYS, ETC:

- ORIGINAL GLO SURVEY BY HARVEY GORDON AND JOSIAH PRESTON DATED FEBRUARY 28, 1855.
- MAP NO. 11-6-00007 BY W.C. GALLOWAY DATED NOVEMBER OF 1915 AND APRIL OF 1916.
- COUNTY SURVEY NO. 548 BY W.C. GALLOWAY DATED APRIL 17, 1916.
- OLD CORNER RESTORATION BOOK NO. 1 PAGE ~~105~~ BY W.C. GALLOWAY DATED APRIL 17, 1916.
- CORNER RESTORATION NO. 859 BY W.C. GALLOWAY DATED APRIL 18, 1916.
- COUNTY SURVEY NO. 590 BY W.C. GALLOWAY DATED MAY 17, 1917.
- COUNTY SURVEY NO. 534 BY W.C. GALLOWAY DATED OCTOBER 28, 1941.
- COUNTY SURVEY NO. 6109 BY VERLE MOORE DATED DECEMBER 12, 1975.
- COUNTY SURVEY NO. 7209 BY ARNOLD BRUBAKER DATED MAY 30, 1980.
- CORNER RESTORATION NO. 861 BY ARNOLD BRUBAKER DATED DECEMBER 5, 1980.

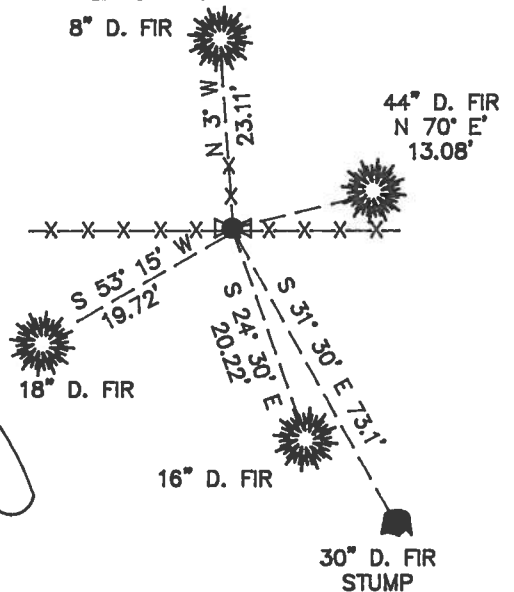
MONUMENTS AND ACCESSORIES FOUND (CONDITION AND SOURCE):

- FOUND: 2 1/2" BRASS CAP (STAMPED AS SHOWN) ON A 2" INSIDE DIAMETER IRON PIPE FOR THE CORNER (COUNTY SURVEY NO. 7209).
 - FOUND: THE STOCK END OF A GUN BARREL (NOT SHOWN ON SKETCH) 10" ABOVE GROUND SURFACE, 0.25 FEET WESTERLY FROM THE RECOVERED 2 1/2" BRASS CAP (WEST 0.2 FEET COUNTY SURVEY NO. 7209). ALSO FOUND PIECES OF BROKEN GLASS NEAR THE WESTERLY SIDE OF THE GUN BARREL.
 - FOUND: MOSTLY ROTTED D. FIR STUMP 30" IN DIAMETER WITH THE SCRIBING "BT" AND PART OF A NOTCH VISIBLE, BEARS S 31° 30' E 73.1 FEET (16" DIAM. S 35° E 73.26 FEET ORIGINAL GLO FACE MEASUREMENT). SET A B.T. TAG ON THE NORTHWESTERLY FACE.
 - FOUND: A D. FIR 44" IN DIAMETER WITH CRUISER MARKS CUT INTO THE BARK AND A HEALED FACE, BEARS N 70° E 13.08 FEET (13" DIAM. N 74° E 12.54 FEET COUNTY SURVEY NO. 548 FACE MEASUREMENT). SET A PK NAIL AND B.C.B.W. IN THE NORTHWESTERLY BASE. SET A B.T. TAG ON THE SOUTHWESTERLY FACE.
 - FOUND: A D. FIR 18" IN DIAMETER WITH A HEALED FACE AND A NAIL IN THE NORTHWESTERLY BASE, BEARS S 53° 15' W 19.72 FEET (13" DIAM. S 52° W 19.7 FEET COUNTY SURVEY NO. 7209). FOUND A B.T. TAG ON THE NORTHEASTERLY FACE. SET A NEW TAG ABOVE THE RECOVERED TAG.
 - FOUND: A D. FIR 8" IN DIAMETER WITH A HEALED FACE, BEARS N 3° W 23.11 FEET (5" DIAM. N 1° W 23.1 FEET COUNTY SURVEY NO. 7209). SET A PK NAIL AND B.C.B.W. IN THE WESTERLY BASE. FOUND A B.T. TAG ON THE SOUTHERLY FACE. SET A NEW TAG ABOVE THE RECOVERED TAG.
- NO OTHER RECORD BEARING OBJECTS WERE RECOVERED.

MONUMENT DETAIL



SKETCH



MONUMENT SET (PROCEDURES AND DESCRIPTION):

USED THE RECOVERED 2 1/2" BRASS CAP FOR THE CORNER MONUMENT. BURIED THE GUN BARREL HORIZONTALLY AND GLASS ALONG THE SOUTH SIDE OF THE BRASS CAP.

NEW ACCESSORIES:

- A D. FIR 16" IN DIAMETER BEARS S 24° 30' E 20.22 FEET, FACED AND SCRIBED "1/4 S20 BT". SET A PK NAIL AND B.C.B.W. IN THE SOUTHWESTERLY BASE. SET A B.T. TAG ON THE NORTHWESTERLY FACE.
- SET: ORANGE FIBERGLASS "SURVEY STAKE" POST 1 FOOT SOUTHERLY.

NOTES:

B.C.B.W. IS A BRASS WASHER STAMPED "BENTON COUNTY SURVEYOR". COMPASS DECLINATION IS 20° EAST. ALL MEASURED DISTANCES AND COMPASS BEARINGS ARE TO THE CENTER OF THE OBJECT, UNLESS OTHERWISE NOTED.

THIS RESTORATION WAS PERFORMED AT THE DIRECTION AND APPROVAL OF THE BENTON COUNTY SURVEYOR. [Signature]

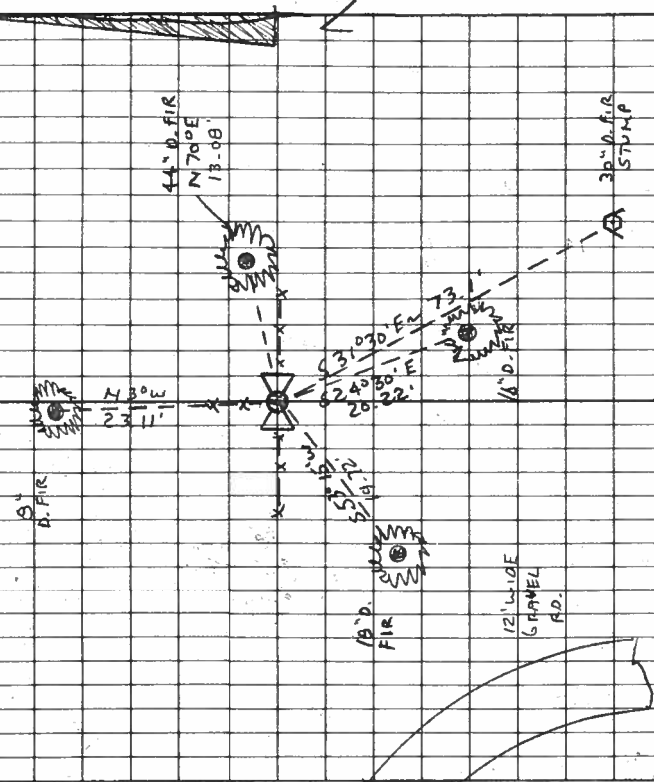
FIRM/AGENCY: BENTON COUNTY SURVEYOR
ADDRESS: 360 S.W. AVERY AVE. CORVALLIS OR. 97333; PH. 757-6821
SURVEY CREW: CURTIS J. LIESENFELT & MARK E. ANDERSON
WITNESS:

REGISTERED
 PROFESSIONAL
 LAND SURVEYOR

Curtis J. Liesenfelt

OREGON
 JULY 17, 1986
 CURTIS J. LIESENFELT
 2213

8/27/91. COL M. MEAD, KVH DATASCOPE 20°E. DEC. RAIN, WARM



WILL USE THE RECOVERED 2 1/2" B.C. FOR THE COR. MARK. BUREL
 THE GUN BARREL + GLASS ALONG THE S. SIDE OF THE B.C.
 A FIR 16" IN DIAM. BEARS S 24° 30' E 20.22', FALED +
 SCRIBED "V.S. 20 BT". SET A PK + BUBB IN THE SW 1/4 FACE.
 SET A BT TAG ON THE NW 1/4 FACE.
 SET PRANGE FIBERGLASS "SURVEY STAKE" JUST 1' SW
 THE COR IS LOCATED AT THE INT. OF AN E-W
 + N-W + SW ENCL + 50' NE 1/4
 FROM THE E. OF AN ACTIVE 12' WIDE
 GRAVE. RO. IT IS POOR FOR PREMARKING
 + GPS CONTROL

STAMPINGS
 CAP
 517
 520
 1980
 5#992

THIS ROW SEC. 17 3 1/4 COR.
 FND: 2 1/2" B.C. (STAMPED AS SHOWN) ON A 2' DIA. I.P. FOR
 THE COR. (CS# 7209).
 " THE STOCK END OF A GUN BARREL 10" A.G.S. 0.25" W 1/4
 FROM THE V.B.C. (WEST ~ 0.2' CS# 7209). ALSO FND
 PIECES OF GLASS NEAR THE W 1/4 SIDE OF THE GUN BARREL.
 " MOSTLY ROTTED D. FIR STUMP 30" IN DIAM @ THE SCRIBING "BT"
 + PART OF A NOTCH VISIBLE, BEARS S 31° 30' E 73.1' (16"
 S 35° E 73.26' ORIG. GLO. FACE MEAS.) SET A BT TAG ON
 THE NW 1/4 FACE.
 " A D. FIR 44" IN DIAM. @ CRUISER MARKS CUT INTO THE
 BARK + A HEALED FACE, BEARS IN 70° E 13.08'
 (13" N 74° E ~ 12.54' CS# 540 FACE MEAS.) SET A
 PK + BUBB IN THE NW 1/4 BASE. SET A BT TAG ON THE
 SW 1/4 FACE.
 " A D. FIR 18" IN DIAM. @ A HEALED FACE + A MAIL IN
 THE NW 1/4 BASE, BEARS S 53° 15' W ~ 19.72' (B" S 52° W ~
 19.7' CS# 7209). FND A BT TAG ON THE NW 1/4 FACE. SET
 A NEW TAG ABOVE THE RECOVERED TAG.
 " A D. FIR 8" IN DIAM. @ A HEALED FACE, BEARS N 3° W ~
 23.11' (S" N 1° W ~ 23.1' CS# 7209). SET A PK + BUBB
 IN THE W 1/4 BASE. FND A BT TAG ON THE SW 1/4 FACE. SET
 A NEW TAG ABOVE THE RECOVERED TAG.
 NO OTHER RECORD BEARING OBJECTS WERE RECOVERED