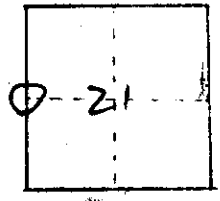


LOCAL RECORD  
CORNERS OF THE CADASTRAL SURVEY GRID

T. 11 S. R. 6 W. Williamette Mer., Oregon State, Benton County

SYMBOLS



⊕ = Official corner found

○ = Probable corner found, authenticity doubtful.

□ = Corner searched for and not found.

Reported by Michael D. Lemke  
Signature

P.L.S. # 1824  
Title

9-16-83  
Date

MARKS: \_\_\_\_\_

1/4 Section Corner common to Secs. 20, 21, & \_\_\_\_\_ is a mound of stone,  
tree, rock, fire pit, iron pipe, glass Quaxet Bottle size 3 1/2" Dia  
Note: Bottle found up-side-down

LEGIBLE MARKS ON BEARING OBJECTS

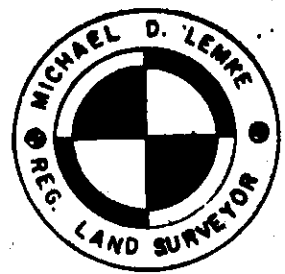
KIND	<u>NEW</u> OAK	<u>CS. Hand copy # 11-6-00007</u> OAK TAG DEAD	OAK	
SIZE	4"	27" (24")	31" (15")	
BEARING	N. 70° W.	S. 40° 35' E	N. 54° 35' W.	
DISTANCE to FACE	33	272	77	
BT TAG POSTED	YES	YES	YES	

ADDITIONAL INFORMATION

REGISTERED  
PROFESSIONAL  
LAND SURVEYOR

Michael D. Lemke

OREGON  
JULY 13, 1979  
MICHAEL D. LEMKE  
1824



Michael D. Lemke  
Registered Professional  
Land Surveyor  
112 Blvd., Philomath, OR  
P.O. Box 891, Corvallis, OR  
ZIP: 97339-0891  
Phone: (503) 929-8988

BENTON COUNTY SURVEYORS OFFICE - CORNER RESTORATION

3176

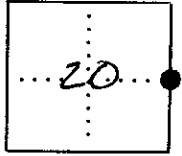
T. 11 S, R. 6 W, W. B. & M., BENTON COUNTY, OREGON

REPORTED BY Michael Lemke

SECTION 20

TITLE R.L.S. # 1824

DATE 9-16-83



● OFFICIAL CORNER FOUND  
○ CORNER SET

1/4 CORNER COMMON TO SEC. 20 & 21  
is glass quart bottle, 3 1/2" dia., upside  
DESCRIBE

ADDITIONAL INFORMATION

down.  
(CWL 7/16/90).

OVER

LEGIBLE MARKS ON BEARING OBJECTS

	Chopped Face	Face Rotted
	Fd.	Fd.
	DEAD	
KIND	Oak	Oak
SIZE	4"	31" (15")
BEARING	N. 70° W.	S. 40° 35' E.
DISTANCE TO FACE	3 <sup>±</sup>	77 <sup>±</sup>
BT TAG POSTED	YES	YES

C.S. 134 cont.

1/4 sec cor. bet. sects. 2 and 3 T. 10 S. R. 5 W.

Set 1/2" x 19" gal. pipe

Oak 9" in dia. bears N. 9° W. 3.00 chs. std.

" 16" " " " N. 28° E. 4.12 "

Cor. to sects. 32, 34, 3, 4 Tps. 9+10 S. R. 5 W.

Set an angle iron 36" long

Oak 8" in dia. bears S. 15° 50' E. 2.72 chs. std.

" 24" " " " S. 77° W. 4.86 " "

Cor. to sects. 2, 3, 34+35 Tps. 9+10 S. R. 5 W.

Stone already set.

1/4 sec. cor. bet. sects. 3+4 T. 10 S. R. 5 W.

Set 3/4" x 26" pipe 12" below surface no trees near See plat #134

Corner to sects. 3, 4, 9+10 T. 10 S. R. 5 W.

Set Pt. bottle ~~surface~~

Oak 9" in dia. bears N. 81° 55' E. 6.810 chs. (6.825 with L 3" 50')

" 9" " " " S. 37° 53' E. 7.434 " (7.448 " L 3" 50')

1/4 sec. cor. bet. sects. 9+10 T. 10 S. R. 5 W.

Set Ot. bottle ~~surface~~

Ash 12" in dia. bears S. 50° 43' E. 9.450 chs slope

3/4" pipe S. 66° 24' E. 1.55 chs

E. corner of school H. S. 4° 04' W

Corner to sects. 2, 3, 10+11 T. 10 S. R. 5 W.

Set a 3/4" pipe & glass ~~Surface~~

Ash 12" in dia. bears N. 39° 30' E. 10.000 chs. sprout of old tree.

Oak stump 24" " " N. 27° 15' W 5.000 " std.

1/4 sec. cor. bet. sects. 3+10 T. 10 S. R. 5 W.

Set 1" x 19" iron rod

Ash 22" in dia. bears N. 31° E. .226 chs.

Reald. " 30" " " " N. 73° 30' W .25 " to old face

C.S. #246 cont.

Witness as

R. E. Nelson  
Continued from page 121

1/4 sec. cor. bet. sects. 19+20 T. 11 S. R. 6 W.

Set 1/4" x 14" x 17" iron & cast iron spool on top. (Part of disc narrow).

Dogwood 6" 9/8 in dia. bears S. 12° E. .86 chs. std.

Fir 20" " " " S. 82° W. .66 " "

Witness R. E. Nelson. May 10, 1911.

1/4 sec. cor. bet. sects. 20+21 T. 11 S. R. 6 W.

Set Ot. bottle ~~Surface~~

Oak 24" in dia. bears S. 70° 55' E. 4.12 chs. std.

" 15" " " " N. 57° 35' W. 1.17 " "

Witness R. E. Nelson. May 17, 1911.

C.S. #1

C.S.  
Witness  
J. O. U  
J. O. U  
E. J.  
may

†-Section corner between sections 20 and 21, Twp. 11 S., R. 6 W. 869

Reestablishment by W. C. Galloway

May 17, 1917

Set Qt. bottle 8" under surface.

Oak 24" in diam bears S 40° 35' E

Oak 15" in diam bears N 54° 35' W

Witnesses R. E. Nelson and Walter R. Read

4.12 chains(standing)  
1.17 chains(standing)

10/21

T135 R5W SEC13 NW COR ADEL HURBERT DIC NO 60  
END: 1" ID IP FOR THE COR. (CS42347)

BS # 1	435.63 (N 83° 45' E)	146.78	9 5 9 5	146.78	ADJ-00M
ME # 2	631.48	0° 00' 0"	8 3 5 6	98.79	24" OAK STUMP
SS # 3	448.32	13 5 3 0	96.795	8 3 5 6	24" OAK STUMP
SS # 4	732.29	13 5 3 0	96.795	8 3 5 6	24" OAK STUMP
INV 3-1	438.72	N 82° 03' 18" W	~ 224.45	(S 80° 30' E ~ 225.72)	
SS # 4	657.40	13 4 4 0	33.75	8 4 2 5 0	33 74 31" OAK
INV 4-1	481.03	N 74° 30' 54" W	~ 183.30	( )	
SS # 5	683.28	9 9 6 0	55.80	8 5 2 3 0	55 79 20" OAK
INV 5-1	—	N 83° 22' 22" W	~ 164.37		

FIND: A PARTLY ROTTED OAK STUMP 24" IN DIAM. @ A HEAVY

FACE BEARS S 82° E ~ 225.0 (1/2" 15 80° 30' E ~ 225.72' COR.

REST. NO. 1843) SET A B.T. TAG ON THE ELY FACE.

" AN OAK 31" IN DIA. @ A HEAVY FACE BEARS S 75° E ~

163.40' (1/4" S 74° 5' E ~ 163.40' COR. REST. NO. 1843). SET A

PICK B.C.B.W. IN THE SLY BASE. SET A B.T. TAG ON THE WLY

FACE.

" AN OAK 28" IN DIA. BEARS S 83° 45' E ~ 164.37' (8"

S 85° 5' E ~ 162.62' COR. REST. NO. 1843). SET A PICK

B.C.B.W. IN THE SLY BASE. SET A B.T. TAG ON THE

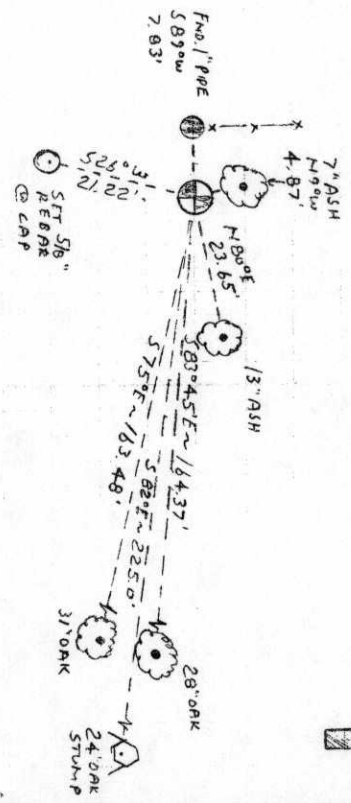
WLY FACE.

" 1" ID IP BEARS S 89° W ~ 7.83. (S 89° 37' W ~ 7.85' FNC. LV.

CS42347). THE PIPE IS @ THE SLY END OF AN OLD S.W. V.

NO OTHER RECORD BEARING OBJECTS WERE RECOVERED

4/23/91. COLBY, MFD D., KERN OAK 2-A, DIMSOS, KUH DATASCOPE  
20° E DEC. CLOS, COOL



SET: 2" 1.0 X 3/8" LONG IP @ A 3 1/4" BEN. CO. B.C. STAMPED

AS SHOWN CENTERED OVER THE RECOVERED 1" PIPE.

AN ASH 13" IN DIA. BEARS N 80° E ~ 23.65', FACE BY SCARRED

'X BT'. SET A PICK B.C.B.W. IN THE NLY BASE. SET A B.T.

TAG ON THE WLY FACE.

SET: 5 1/2" X 3/8" REBAR @ A TYP. MKD. "BENTON COUNTY SUR-

VEYOR", BEARS S 26° W ~ 21.22'.

AN ASH 7" IN DIA. BEARS N 90° W ~ 4.87', FACE BY SCARRED

'X BT'. SET A PICK B.C.B.W. IN THE ELY BASE. SET A B.T.

TAG ON THE SLY FACE.

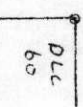
SET: ORANGE FIBERGLASS 'SURVEY STAKE' POST 1 1/2" WLY

THE COR IS LOCATED IN A HEAVILY WOODED LW. A HURBERT

AREA, 53' ELY FROM THE PHYSICAL E OF STAMPINGS

HURBERT RD. (CO. RD. NO. 35024) &

4 1/2' NLY FROM THE E. OF THE GRAVE. DRIVEWAY. T135 R5W W/4  
TO THE RESOURCES AT 29153, 29156 HURBERT CO. 1991



116300340

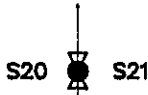
BENTON COUNTY CORNER RESTORATION FORM

3991

TOWNSHIP 11 S RANGE 6 W SECTION 20 D.L.C. CORNER E 1/4
DATE 9/3/91 CORNER RESTORATION FIELD BOOK NUMBER 11 PAGE(S) 21

CORNER DESIGNATION:

THE QUARTER CORNER COMMON TO SECTIONS 20 AND 21, IN T 11 S, R 6 W, WILLAMETTE MERIDIAN.



- CONDITION REPORT ONLY
REFERENCED OUT
XX RENEWED
SURVEYED IN

LOCATION AND COMMENTS:

THE CORNER IS LOCATED ON A HEAVILY WOODED, GENTLY SLOPING, WEST-SOUTHWESTERLY FACING HILLSIDE, 110 FEET WEST-NORTHWESTERLY FROM A NORTH-NORTHEASTERLY BY SOUTH-SOUTHWESTERLY WOVEN AND BARBED WIRE FENCE AND APPROXIMATELY 700 FEET NORTH-NORTHEASTERLY FROM THE RESIDENCE AT 23571 PRIEST ROAD (COUNTY ROAD NO. 16484).

PREVIOUS RENEWALS/SURVEYS, ETC:

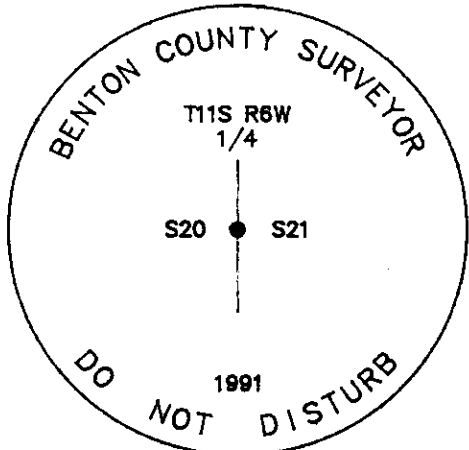
- ORIGINAL GLO SURVEY BY HARVEY GORDON AND JOSIAH PRESTON DATED FEBRUARY 28, 1855.
MAP NO. 11-6-00007 BY W.C. GALLOWAY DATED NOVEMBER OF 1915 AND APRIL OF 1916.
COUNTY SURVEY NO. 590 BY W.C. GALLOWAY DATED MAY 17, 1917.
OLD CORNER RESTORATION BOOK 1 PAGE 122 BY W.C. GALLOWAY DATED MAY 17, 1917.
CORNER RESTORATION NO. 869 BY W.C. GALLOWAY DATED MAY 17, 1917.
MAP NO. 11-6-00009 BY W.C. GALLOWAY (NO DATE GIVEN).
COUNTY SURVEY NO. 4536 BY JOHN GANNON DATED JUNE 15, 1968.
COUNTY SURVEY NO. 5220 BY N.C. WHITFIELD DATED MARCH OF 1972.
CORNER RESTORATION NO. 3176 BY MICHAEL LEMKE DATED SEPTEMBER 16, 1983.

MONUMENTS AND ACCESSORIES FOUND (CONDITION AND SOURCE):

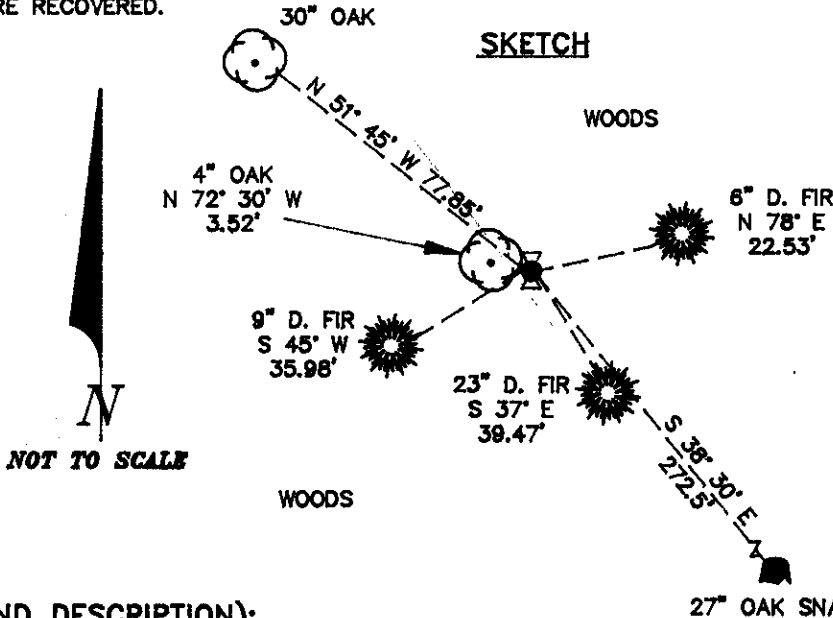
- FOUND: BROWN GLASS QUART BOTTLE UPSIDE DOWN, 7" BELOW GROUND SURFACE, MARKED "F. ZIMMERMAN & CO. MAIL ORDER HOUSE PORTLAND, ORE. FULL MEASURE" FOR THE CORNER (COUNTY SURVEY NO. 590).
FOUND: AN OAK SNAG 27" IN DIAMETER WITH A ROTTED OUT FACE, BEARS S 38° 30' E 272.5 FEET (24" DIAM. ORIGINAL GLO SURVEY, S 40° 35' E 271.92 FEET COUNTY SURVEY NO. 590). FOUND A B.T. TAG ON THE NORTHWESTERLY FACE. SET A NEW TAG BELOW THE RECOVERED TAG.
FOUND: AN OAK 30" IN DIAMETER, BEARS N 51° 45' W 77.85 FEET (15" DIAM., N 54° W 77.22 FEET ORIGINAL GLO FACE MEASURE). SET A PK NAIL AND B.C.B.W. IN THE NORTHEASTERLY BASE. FOUND A B.T. TAG ON THE SOUTHEASTERLY FACE. SET A NEW TAG ABOVE THE RECOVERED TAG.
FOUND: AN OAK 4" IN DIAMETER, BEARS N 72° 30' W 3.52 FEET (4" DIAM., N 70° W 3.3 FEET FACE MEASURE CORNER RESTORATION NO. 3176). SET A PK NAIL AND B.C.B.W. IN THE SOUTHERLY BASE. FOUND A B.T. TAG ON THE EASTERLY FACE. SET A NEW TAG ABOVE THE RECOVERED TAG.

NO OTHER RECORD BEARING OBJECTS WERE RECOVERED.

MONUMENT DETAIL



3 1/4" BRASS CAP



MONUMENT SET (PROCEDURES AND DESCRIPTION):

SET: 2" INSIDE DIAMETER X 36" LONG IRON PIPE WITH A 3 1/4" BENTON COUNTY BRASS CAP, STAMPED AS SHOWN, IN THE SAME COORDINATE POSITION AS THE RECOVERED BOTTLE. BROKE THE BOTTLE DURING ITS RECOVERY AND REMOVAL. PLACED THE PIECES OF BROKEN BOTTLE HORIZONTALLY ALONG THE EAST SIDE OF THE NEW MONUMENT.

NEW ACCESSORIES:

- A D. FIR 6" IN DIAMETER, BEARS N 78° E 22.53 FEET, FACED AND SCRIBED "1/4 S21 BT". SET A PK NAIL AND B.C.B.W. IN THE NORTHERLY BASE. SET A B.T. TAG ON THE WESTERLY FACE.
A D. FIR 23" IN DIAMETER, BEARS S 37° E 39.47 FEET, FACED AND SCRIBED "1/4 S21 BT". SET A PK NAIL AND B.C.B.W. IN THE NORTHEASTERLY BASE. SET A B.T. TAG ON THE NORTHWESTERLY FACE.
A D. FIR 9" IN DIAMETER, BEARS S 45° W 35.98 FEET, FACED AND SCRIBED "1/4 S20 BT". SET A PK NAIL AND B.C.B.W. IN THE SOUTHEASTERLY BASE. SET A B.T. TAG ON THE NORTHEASTERLY FACE.

SET: ORANGE FIBERGLASS "SURVEY STAKE" POST 1 FOOT NORTHERLY.

NOTES:

B.C.B.W. IS A BRASS WASHER STAMPED "BENTON COUNTY SURVEYOR". COMPASS DECLINATION IS 20° EAST. ALL MEASURED DISTANCES AND COMPASS BEARINGS ARE TO THE CENTER OF THE OBJECT, UNLESS OTHERWISE NOTED.

THIS RESTORATION WAS PERFORMED AT THE DIRECTION AND APPROVAL OF THE BENTON COUNTY SURVEYOR.

FIRM/AGENCY: BENTON COUNTY SURVEYOR
ADDRESS: 360 S.W. AVERY AVE. CORVALLIS OR. 97333; PH. 757-6821
SURVEY CREW: CURTIS J. LIESENFELT & MARK E. ANDERSON
WITNESS:

REGISTERED PROFESSIONAL LAND SURVEYOR
Curtis J. Liesenfelt
OREGON
JULY 17, 1986
CURTIS J. LIESENFELT
2213