

116500400

OREGON CORNER RESTORATION FORM

3410

Section 14 Township 11 Range 6

County BENTON Date 9/16/1897

CORNER DESIGNATION

S 15	S 14	SOUTHWEST CORNER SECTION 14
S 22	S 23	

- Condition Report Only
- Not Found
- Renewed
- Unrecorded
- Surveyed In
- Referenced Out

Previous Renewals/Surveys, etc. NONE

Monument(s) & Accessories Found: (Condition and Source)

MONUMENT WAS OBLITERATED
THIS INFORMATION TAKEN FROM COUNTY
COURT JOURNAL BOOK 6 PAGE 45 AND 46

Monument Detail

Sketch

STONE
14" X 14" X 24"

Monument Set (Procedures and Description)

STONE 14" X 14" X 24" MARKED WITH AN "X" ON
THE NORTH AND SOUTH SIDES

New Accessories NONE STATED

Location & Comments

Surveyor's Seal

Compass Declination _____

Firm/Agency BENTON

COUNTY

Address _____

Party Chief GEORGE MERCER

Notes _____

Witness _____

C.S. #254
Continued
by W.C. Gallaway

1/4 sec. cor. between secs. 14 & 23 T. 14S. R 5W.
Set 3/4" x 24" I rod
Pine 30" in dia. bears N. 2° E. 172 chs. std. burnt inside.
Oak 12" " " S. 25° E. 42 " " remkd.
" 20" " " N. 10° W. 440 "
Witnesses Tom & A. Gornak, J.E. Prohaska & one other Oct. 27, 1916.

1/4 sec. cor. bet. secs. 25 & 36 T. 14S. R 5W.
Set L iron 4' long set on sec. line 1/2 bet. sec. cor.
Maple 32" in dia. bears S. 89° 50' W. 2.593 chs.
" 36" " " N. 71° 35' W. 3.126 "
Witnesses J.E. Prohaska et al. Oct. 28, 1916.

Corner to secs. 25, 26, 35 & 36 T. 14S. R 5W.
Set a 3/4" pipe, rocks piled against pipe. set pipe where stake was.
Ash 14" in dia. bears S. 40° 40' E. 1.003 chs.
Maple 14" " " S. 58° 30' W. 910 "
" 26" " " N. 38° W. 490 "
" stump S. 3° E. 14 " standing.
Witnesses M.D. Harpool & son. June 1917.

C.S. #255
by W.C. Gallaway

Corner to secs. 14, 15, 22 & 23 T. 11S. R 6W.
Re set a stone 9" x 12" x 24" which was moved or set in wrong position.
Oak 24" in dia. bears N 42° E. 4.855 (look up blun done (by Geo. Mercer) seemed to have been
" 10" " " S. 40° E. 10.65 chs. std.
" 14" " " N. 41° W. 3.35 " " Remkd.
Claim corner N. 0° 06' W. 4.08 chs.
Witness James E. Mc Donough Nov. 1916.

1/4 sec. cor. between secs. 14 & 15 T. 11 S. R. 6 W.
Set stone 10" x 10" x 32", 20" in ground. Stone set by Mercer had been
Oak 36" in dia. bears S. 31° E. 5.553 chs. Moved according to C.E. Jackson
Maple 14" " " N 72° W. 2.613 " Oak don't ash stump partly
+ in face of rock? asto size bears N. 29° 05' E. 2.142 chs.
Witnesses James E. Mc Donough, A.C. Johnson & C.E. Jackson Nov. 1916.

1/4 sec. cor. between secs. 14 & 23 T. 11 S. R 6W.
Set Stone 6" x 10" x 18" one tree gone:
Oak 6" in dia. bears S. 54° 50' W. .616 chs.
" 8" " " N. 46° 30' W. .92 " std.
Witnesses J.E. Mc Donough & A.C. Johnson Nov. 14, 1916.

Corner to secs. 13, 14, 23 & 24 T. 11 S R 6 W.
Set 3/4" x 22" galv. pipe
Fir 4" in dia. bears N. 25° 45' E. 78 chs. std. 40" in dia.
" 26" " " S. 26° 30' E. 455 "
" 24" " " S. 40° 30' W. 365 "
" 4" " " N. 4° " 95 " " 40" in dia.
Oak, 2" " " S. 36° " 75 " "
" 37° " " " " "

Corner to sections 14, 15, 22 and 23, Twp. 11 S., R. 6 W.

Reestablishment by W. C. Galloway

November 1916

85

Reset a stone 9" x 12" x 24" which was moved or set in wrong position.

Oak 24" in diam bears N 42° E 4.855 chains (near do)

Oak 10" in diam bears S 40° E 10.65 chains (standing)

Oak 14" in diam bears N 41° W 3.35 chains (standing)

Claim corner N 0° 06' W 4.08 chains

Witness James E. McDonough

T11S R6W SEC. 14 SW COR.

FND: 9" x 4" x ? STONE FOR THE COR. (COR REST NO. B50)

THE STONE HAS A LARGE CROSS CUT ON THE NORTH & SOUTH FACES. IT ALSO HAS A SMALL CROSS CUT IN THE TOP CENTER.

" A PARTLY ROTTED OAK 24" IN DIA. LAYING DOWN IN A NE 1/4 DIRECTION. THE STUMP HOLE BEARS S 35° E ~ 702.5 (S 40° E 702.90 COR REST. NO. B50). THE TREE HAS A ROTTED OUT FACE @ SOME CHOP MARKS VISIBLE.

" AN OAK 37" IN DIA. @ A HEALED FACE BEARS N 39° W ~ 221.60' (N 42° W ~ 221.10' ORIG. G.L.O. FACE MEAS.). SET A PKT + B.C.B.W. IN THE SW 1/4 BASE. SET A B.T. TAG ON THE SE 1/4 FACE. NO OTHER RECORD BEARING OBJECTS WERE RECOVERED.

WILL USE THE STONE AS MARKED (CROSS CUT IN THE TOP CTR.) FOR THE COR.

A WHITE ALDER 15" IN DIA. BEARS S 52° E ~ 80.06' FACED ✓ + SCRIBED "T11S R6W S23 BT". SET A PKT + B.C.B.W. IN THE NE 1/4 BASE. SET A B.T. TAG ON THE NW 1/4 FACE.

SET: 5/8" x 30" REBAR @ A.Y.P.C. MKD. "BENTON COUNTY SURVEYOR" 2" B.G.S. BEARS N 31° E ~ 61.00'

" 5/8" x 30" REBAR @ A.Y.P.C. MKD. "BENTON COUNTY SURVEYOR" 2" B.G.S. BEARS S 31° W ~ 45.21'

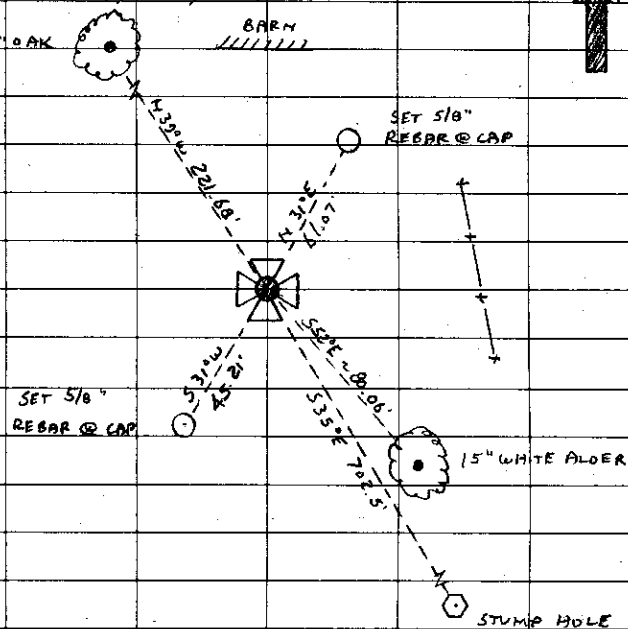
8/56

10/17/90; CJL, MEAD; KERN DR. 2-A, DM 503, SILVA Camp

20° E DEC. P.C., COOL

37" OAK

BARN



THE COR IS LOCATED IN A S 1/4 SLOPING PASTURE 122' S 1/4 FROM AN OLD BARN + 77' W-SW 1/4 FROM A B-W FENCE THAT RUNS N-NW 1/4 + S-SE 1/4. IT IS GOOD FOR PRE-MARKING + GPS CONTROL.

SET: ORANGE FIBER GLASS "SURVEY MARKER" POST 1' S 1/4

116500400

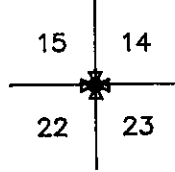
BENTON COUNTY CORNER RESTORATION FORM

3830

SECTION 14 TOWNSHIP 11 S RANGE 6 W DLC _____ CORNER SW
DATE 10/17/90 CORNER RESTORATION FIELD BOOK NUMBER 8 PAGE 56

CORNER DESIGNATION:

THE SECTION CORNER COMMON TO SECTIONS 14, 15, 22 AND 23, IN T 11 S, R 6 W, WILLAMETTE MERIDIAN.



- _____ CONDITION REPORT ONLY
- XX REFERENCED OUT
- _____ RENEWED
- _____ SURVEYED IN

LOCATION AND COMMENTS:

THE CORNER IS LOCATED IN A SOUTHERLY SLOPING PASTURE 122 FEET SOUTHERLY FROM AN OLD BARN AND 77 FEET WEST-SOUTHWESTERLY FROM A BARBED WIRE FENCE THAT RUNS NORTH-NORTHWESTERLY AND SOUTH-SOUTHEASTERLY.

PREVIOUS RENEWALS/SURVEYS, ETC.:

- ORIGINAL GLO SURVEY BY HARVEY GORDON AND JOSIAH PRESTON IN 1855.
- CORNER RESTORATION NO. 3410 BY GEORGE MERCER ON SEPTEMBER 16, 1897.
- COUNTY COURT JOURNAL BOOK 6, PAGE 45 BY GEORGE MERCER ON SEPTEMBER 16, 1897.
- CORNER RESTORATION NO. 850 BY W.C. GALLOWAY IN NOVEMBER OF 1916.
- COUNTY SURVEY NO. 4128 BY B. OSBURN SHAW ON AUGUST 13, 1985.

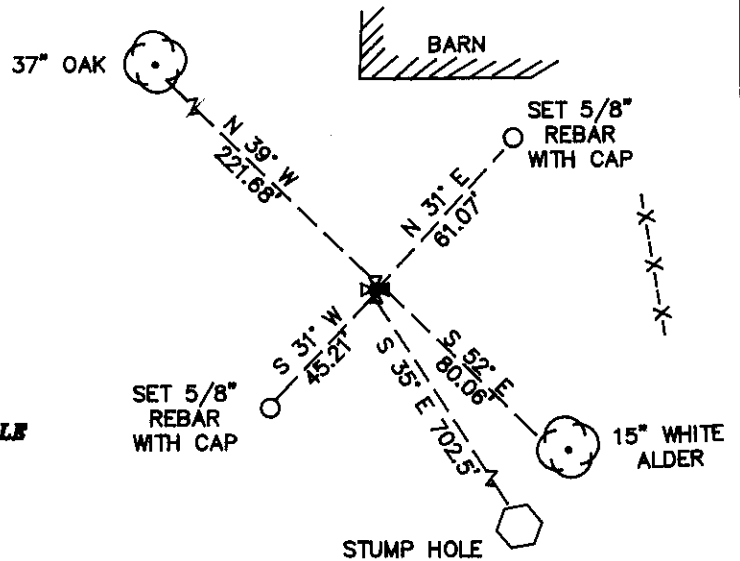
MONUMENTS AND ACCESSORIES FOUND (CONDITION AND SOURCE):

- FOUND: A 9" X 14" X ? STONE FOR THE CORNER (CORNER RESTORATION NO. 850). THE STONE HAS A LARGE CROSS CUT ON THE NORTH AND SOUTH FACES. IT ALSO HAS A SMALL CROSS CUT IN THE TOP CENTER.
- FOUND: A PARTLY ROTTED OAK 24" IN DIAMETER LYING DOWN IN A NORTHEASTERLY DIRECTION. THE STUMP HOLE BEARS S 35° E 702.5 FEET (S 40° E 702.90 FEET CORNER RESTORATION NO. 850). THE TREE HAS A ROTTED OUT FACE WITH SOME CHOP MARKS VISIBLE.
- FOUND: AN OAK 37" IN DIAMETER WITH A HEALED FACE BEARS N 39° W 221.68 FEET (N 42° W 221.10 FEET ORIGINAL GLO FACE MEASUREMENT). SET A PK NAIL AND B.C.B.W. IN THE SOUTHWESTERLY BASE. SET A B.T. TAG ON THE SOUTHEASTERLY FACE.
- NO OTHER RECORD BEARING OBJECTS WERE RECOVERED.

MONUMENT DETAIL



SKETCH



MONUMENT SET (PROCEDURES AND DESCRIPTION):

USED THE STONE AS MARKED (CROSS CUT IN THE TOP CENTER) FOR THE CORNER.

NEW ACCESSORIES:

- A WHITE ALDER 15" IN DIAMETER BEARS S 52° E 80.06 FEET, FACED THE BARK AND SCRIBED "T11S R6W S23 BT". SET A PK NAIL AND B.C.B.W. IN THE NORTHEASTERLY BASE. SET A B.T. TAG ON THE NORTHWESTERLY FACE.
- SET: 5/8" X 30" REBAR WITH A YELLOW PLASTIC CAP MARKED "BENTON COUNTY SURVEYOR" 2" BELOW GROUND SURFACE BEARS N 31° E 61.07 FEET.
- SET: 5/8" X 30" REBAR WITH A YELLOW PLASTIC CAP MARKED "BENTON COUNTY SURVEYOR" 2" BELOW GROUND SURFACE BEARS S 31° W 45.21 FEET.
- SET: ORANGE FIBERGLASS "SURVEY MARKER" POST 1 FOOT SOUTHERLY.

NOTES:

B.C.B.W. IS A BRASS WASHER STAMPED "BENTON COUNTY SURVEYOR". COMPASS DECLINATION IS 20° EAST. ALL MEASURED DISTANCES AND COMPASS BEARINGS ARE TO THE CENTER OF THE OBJECT, UNLESS OTHERWISE NOTED.

FIRM/AGENCY: BENTON COUNTY PUBLIC WORKS
ADDRESS: 380 S.W. AVERY AVE. CORVALLIS OR. 97333; PH. 757-8821
PARTY CHIEF: CURTIS J. LIESENFELT
CREW: MARK E. ANDERSON
WITNESS:

REGISTERED PROFESSIONAL LAND SURVEYOR

Danna L. Fehrenbacher

OREGON
JULY 16, 1982
DANNA L. FEHRENBACHER
1995