

## CORNER FILE TRACKING

F:\Survey\Corners\Misc\Filetrac.doc

8/11/97

<b>CORNER NUMBER</b>
<b>116600300</b>

STEP	HISTORY(1)	RESTORATION(3)
Form Prepared, DB	11/8/97	11/8/97
Field Inspection, DB	—	—
Form Checked, DB	3/25/98	3/25/98
Form Edited, DB	"	"
Form Signed, DB	"	4/3/98
Authorize Payment, DB	—	—
Archive Digital Files	3/25/98	3/25/98
Collect Documents	7/8/98	7/8/98
Copy For Filming	"	"
Filmed	7/28/98	7/28/98
Scanned (Archived), DB		
Indexed		
Update Database		
Filed, DB		

(DB) = Entry needed in database (Access).

### COMMENTS:

~~12/18/97 WAITING FOR N STAR TO FILE ITS SURVEY~~

1927 MAD SCALED FROM  
 CORVALLIS QUAD.  
 LAT. N. 44° 35' 33"  
 LONG. W 123° 22' 21"

23 | 24  
 26 | 25

CORNER HISTORY		T 11 S, R 6 W		SECTION 23 D.L.C.		CORNER SE CORNER		# 600300
NO.	DATE	SOURCE	SURVEYOR	MONUMENTS AND ACCESSORIES		COMMENTS		
①	2/28/1855	ORIG. G.L.O.	HARVEY GORDON * JOSIAH PRESTON	SET POST RAISED MONUMENT OF STONE				1
②	2/1923	CS # B 46	WALTER W. LARSEN	SET STK - POLE + PILE OF STONES @ 2 B.O.'S		FB 32/32		3
③	"	CS # B 51	" " "	NO MON. DESC. 3 B.O.'S		PGS. 16, 17 OF FIELD NOTES		4
④	"	OLD COR. REST. BE # 1 Pg. 167	" " "	SET STK - POLE + PILE OF STONES @ 2 B.O.'S				5
⑤	"	REST. 876	" " "	" " " " " " " " " " " "		TRANS. COPY		7
⑥	3/1923	MAP NO. 11-8-00011	BEN. CO. SURV. OFF.	PILE OF STONES @ 2 B.O.'S				9
⑦	1948	" "	" " "	3" x 3" x 42" OAK STK.				11
⑧	10/18/1994	COR. REST. FB # 15 Pg. 66	CURT LIESENFELT	FND LOW MOUND OF STONES SPT RB + CAP IN CTR.				13
9	7/6/1995	COR. REST. NO. 116600300 R2	CURT LIESENFELT	FND RB + CAP + 4 B.O.'S EST. 2 NEW ACCE.				15
10	11/5/1997	COR. REST. NO. 116600300 R3	" "	" " " " " " SET BL @ 2 NEW ACCE.				17
11	11/19/1996	CS # 9264	TED LANLTON	FND BL + 2 ACCE.				19
								20
								21
								22
								23
								24
								25
								26
								27
								28
								29
								30
								31

1-157  
876

1/4 cor. between Secs 25 + 36 T. 11 S. R. 6 W.  
Set oak stake - found deep hole - no mka  
Oak 6" N. 12° W .070 chs  
Fir 30" S. 74° E. .230 "  
" 30" S. 4° W. .440 "  
Witness. — Wilbert

1/4 corner betw. Sec's. 25 + 26 T 11 S R 6 W.  
Set stone 16"x24"x14" - found stone + oak snag  
Oak 6" S. 69° W. .175  
Wire fence S. .266  
Witness - Willard Simpson - — Wilbert

Sec. Cor. 23, 24, 25, + 26 T. 11 S. R. 6 W.  
Set oak stake - pole, + pile of stones  
U. S. G. S. B. M. on top of Baldy S. 46° 17' E.  
Court house, Corvallis S. 71° 22' E  
Witness - Willard Simpson + Harry Wilbert.

1/4 corner between Secs. 24 + 25 T. 11 S. R.  
Set 1/2"x1" brake lever  
Oak 12" N. 10° E. .54<sup>chs.</sup> original marks  
Double " 6" S. 0° 30' W. .490 "  
Witness - H. E. Wilbert

1/4 corner between Secs. 24 + 19 T. 11 S. R.  
Set 3/4" Pipe Fir 24" N. 66° E. .289 Set from oak 4" N. 30° W. .66 1/2  
" 12" South 12 good 3  
Distances and bearings check.  
Fir 24" S. 48° E. .171 chs A.  
" 24" West .025 " W.L.  
" 15" N. 45° W. .168 " V.A.  
Witness. Harry E. Wilbert

1/4 corner between Secs. 19 + 24 T. 11 S. R 5 + 6  
Set 2" pipe by proportion  
Fir " S. 76 1/2° E .69 chs  
Madrone 12" S. 17 1/2° E .806 "  
" " " " "

Section corner 23, 24, 25 and 26, Twp. 11 S., R. 6 W.

876

Reestablishment by ~~W. G. Galloway~~\*

February 1923

Set Oak stake, pole, and pile of stone

U.S.G.S.B.M. on top of Baldy bears S 46° 17' E

Court house, Corvallis bears S 71° 22' E

Witness Willard Simpson and Harry Wilbert

\* WALTER W. LARSEN, SEE THE OLD CORNER RESTORATION BOOK NO. 1, PAGES 166, 167 (CJL 2/17/94)

---

**TOWNSHIP 11 SOUTH, RANGE 6 WEST, WILLAMETTE MERIDIAN; SECTION 23 CORNER AT/NEAR SE**  
**DONATION LAND CLAIM \_\_\_\_\_ CORNER \_\_\_\_\_**

**COMMON CORNER(S):**

- AT/NEAR THE SOUTHWEST CORNER OF SECTION 24.
- AT/NEAR THE NORTHWEST CORNER OF SECTION 25.
- AT/NEAR THE NORTHEAST CORNER OF SECTION 26.

**UPDATES AND REVISIONS:**

**CORNER RECORDS (PREVIOUS RENEWALS, SURVEYS, ETC.)**

- [01] ORIGINAL GLO SURVEY BY HARVEY GORDON AND JOSIAH PRESTON DATED FEBRUARY 28, 1855.
- [02] COUNTY SURVEY NO. 846 BY WALTER W. LARSEN DATED FEBRUARY OF 1923 (FIELD BOOK NO. 32, PAGE 32).
- [03] COUNTY SURVEY NO. 851 BY WALTER W. LARSEN DATED FEBRUARY OF 1923 (PAGES 16, 17 OF FIELD NOTES).
- [04] OLD CORNER RESTORATION BOOK NO. 1 PAGE 167 BY WALTER W. LARSEN DATED FEBRUARY OF 1923.
- [05] CORNER RESTORATION NO. 876 BY WALTER W. LARSEN DATED FEBRUARY OF 1923.
- [06] MAP NO. 11-6-00011 BY BENTON COUNTY SURVEYOR'S OFFICE DATED MARCH OF 1923.
- [07] MAP NO. 11-6-00011 BY BENTON COUNTY SURVEYOR'S OFFICE DATED 1948.

**COMMENTS/LOCATION/ETC:**

THE SURVEYOR'S OF RECORD [01] MEASURED DISTANCES TO THE FACE OF BEARING TREES.

RECORD [05] IS A TRANSCRIBED COPY OF RECORD [04] AND CONTAIN ERRORS AND OMISSIONS.

**HORIZONTAL AND VERTICAL INFORMATION:**

**HORIZONTAL DATUM:** NAD 83 (91)  
**LATITUDE:** N 44° 35' 31.88090"  
**LONGITUDE:** W 123° 22' 26.10353"

**VERTICAL DATUM:** NGVD/29/47  
**ELLIPSOID ELEVATION:**  
**ORTHOMETRIC ELEVATION:** 1240.28'+/- 0.05-0.10  
**GEOID SEPARATION:**

**STATE PLANE COORDINATE SYSTEM:** OREGON NORTH  
**N (Y):** 350736.203+/-0.05-0.10  
**E (X):** 7453608.099+/-0.05-0.10

**SCALE FACTOR:** 0.99994487  
**COMBINED FACTOR:** 0.99988890  
**CONVERGENCE:** -2° 02' 17.3"

THIS POSITION WAS DETERMINED BY TIEING INTO A RANDOM G.P.S. CONTROL POINT (W.I.C.H.#1) WITH A SOLAR OBSERVATION FOR AZIMUTH (CORNER RESTORATION FIELD BOOK NO. 15, PAGE 66), AND E.D.M. DISTANCE. THE AZIMUTH AND DISTANCE WERE CONVERTED TO THE STATE PLANE GRID. FOR MORE INFORMATION ON THE G.P.S. OBSERVATIONS AND ADJUSTMENTS SEE PROJECT (W.I.C.H.) WILLAMETTE INDUSTRIES CARDWELL HILL IN THE G.P.S. PROJECT FILE DRAWER.

**NOTES:**

THIS IS A MICROSOFT WORD (VERSION 5.0) DOCUMENT NAMED "16600300" CREATED FROM A BOILER PLATE DOCUMENT NAMED "HISTORY", WHICH HAS A STYLESHEET NAMED "CORNER" ATTACHED TO IT.

**FIRM/AGENCY:** BENTON COUNTY SURVEYOR'S OFFICE  
**ADDRESS:** 360 S.W. AVERY AVE. CORVALLIS OR 97333; PH. 757-6821  
**RESEARCH BY:** CURTIS J. LIESENFELT/MARK E. ANDERSON  
**DATA ENTRY BY:** MARK E. ANDERSON

REGISTERED  
PROFESSIONAL  
LAND SURVEYOR

*Curtis J. Liesenfelt*

OREGON  
JULY 17, 1986  
CURTIS J. LIESENFELT  
2213

LICENSE RENEWAL 12/31/1996

**BENTON COUNTY CORNER RESTORATION FORM, PAGE 1 OF 1, 116600300R2**

**SEE CORNER HISTORY FORM FOR RECORDS ETC.**

CORNER RESTORATION FIELD BOOK NUMBER 16 PAGE(S) 14 DATE 7/6/1995

TOWNSHIP 11 SOUTH, RANGE 6 WEST, WILLAMETTE MERIDIAN; SECTION 23 CORNER AT/NEAR SE

DONATION LAND CLAIM \_\_\_\_\_ CORNER \_\_\_\_\_

CONDITION REPORT \_\_\_\_\_; REFERENCED OUT XX; RENEWED \_\_\_\_\_; SURVEYED IN \_\_\_\_\_

**LOCATION AND COMMENTS:**

THE MONUMENT IS LOCATED IN A MEADOW, ON A MODERATELY SLOPING, SOUTHEASTERLY FACING HILLSIDE, APPROXIMATELY 200 FEET EASTERLY FROM A GRAVEL LOGGING ROAD. THERE IS A NORTH-SOUTH AND EASTERLY GRAVEL ROAD INTERSECTION APPROXIMATELY 350 FEET SOUTH-SOUTHWESTERLY, DOWNHILL. TO REACH START AT THE DOUBLE GREEN GATES (WILLAMETTE INDUSTRIES) ON THE SOUTH SIDE OF HIDDEN VALLEY ROAD, APPROXIMATELY 0.1 MILES EASTERLY FROM BLAKESLEY CREEK ROAD, FOLLOW GRAVEL ROAD 1.2 MILES TO LEFT FORK (UPHILL), GO 0.05 MILES TO A RIGHT FORK (UPHILL), GO STRAIGHT FOR 1 MILE TO A WIDE SPOT IN SAID GRAVEL ROAD.

**MONUMENTS AND ACCESSORIES FOUND (CONDITION AND SOURCE):**

FOUND: 5/8" REBAR WITH YELLOW PLASTIC CAP SET IN A PILE OF STONES, AS PER CORNER RESTORATION FIELD BOOK NO. 15, PAGE 66.

FOUND: BENTON COUNTY COURT HOUSE, BEARS S 71° 21' 15" E (S 71° 22' E [02]).

FOUND: U.S.G.S. STATION "BALD" BEARS S 46° 15' 45" E (S 46° 17' E [02]).

FOUND: 3 1/4" BENTON COUNTY BRASS CAP AT THE SOUTH 1/4 CORNER OF SECTION 24 IN T 11 S, R 6 W AS PER CORNER RESTORATION NO. 4147, BEARS N 89° 19' 56" E 2655.00 FEET (N 89° 19' E 2653.99 FEET AS PER RECORD [03]).

FOUND: 3 1/4" BENTON COUNTY BRASS CAP AT THE WEST 1/4 CORNER OF SECTION 25 IN T 11 S, R 6 W AS PER CORNER NO. 116600240, BEARS S 0° 09' 26" W 2611.96 FEET (S 0° 08' W 2615.25 FEET AS PER RECORD [03]).

**MONUMENT SET (PROCEDURES AND DESCRIPTION):**

THIS RESTORATION WAS DONE TO PERPETUATE THE POSITION OF THE RECOVERED PILE OF STONES. RECORD [02] INDICATES THE STONES WERE SET BY A METHOD OTHER THAN DOUBLE PROPORTIONATE MEASUREMENT WHICH IS THE PROPER METHOD TO RESTORE THIS CORNER IF IT IS LOST. THIS OFFICE IS NOT PREPARED TO ACCEPT THIS PILE OF STONES AS THE SECTION CORNER AT THIS TIME.

**NEW ACCESSORIES:**

SET: 6" SPIKE AND BRASS WASHER IN THE TOP CENTER OF A 25" D. FIR STUMP, BEARS S 42° 40' W 35.48 FEET.

SET: 6" SPIKE AND BRASS WASHER IN THE TOP CENTER OF A 16" EASTERLY TRUNK OF A TWIN D. FIR STUMP, BEARS S 75° 08' E 41.81 FEET.

**MONUMENT DETAIL**

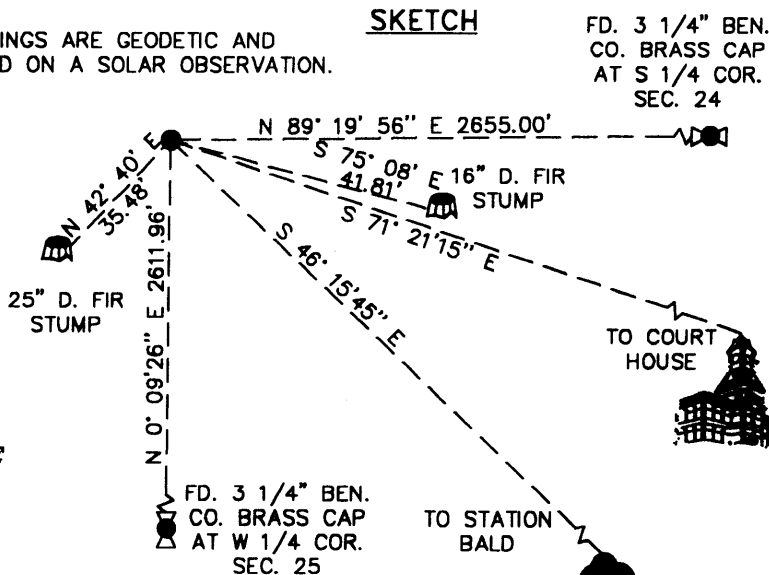


FD 5/8" REBAR WITH YELLOW PLASTIC CAP IN MOUND OF STONES



BEARINGS ARE GEODETIC AND BASED ON A SOLAR OBSERVATION.

**SKETCH**



**NOTES:**

COMPASS DECLINATION IS 20° EAST. ALL MEASURED DISTANCES AND COMPASS BEARINGS ARE TO THE CENTER OF THE OBJECT, UNLESS OTHERWISE NOTED. ALL BEARING TREES ARE PAINTED AND HAVE A B.T. TAG ATTACHED, FACING THE CORNER UNLESS OTHERWISE NOTED. ALL NEW BEARING TREES HAVE A BRASS WASHER (STAMPED "BENTON COUNTY SURVEYOR") ATTACHED TO A SIDE CENTER UNLESS OTHERWISE NOTED. ALL LIVE BEARING TREES HAVE A PLASTIC WASHER (STAMPED "BENTON COUNTY SURVEYOR CORNER RESTORATION") ATTACHED TO THE BACK OF THE TREE OPPOSITE THE CORNER UNLESS OTHERWISE NOTED. ALL SET REBAR ARE 5/8" X 30" AND HAVE A YELLOW PLASTIC CAP (STAMPED "BENTON COUNTY SURVEYOR") ATTACHED TO THE TOP.

THIS DOCUMENT WAS NAMED AND CREATED IN A MANNER SIMILAR TO THE HISTORY FORM. THE NAME OF THE BOILER PLATE IS "MONUMENT". THE BORDER, STAMP AND SKETCH ARE FROM AUTOCAD RELEASE 12.

THIS RESTORATION WAS PERFORMED AT THE DIRECTION AND APPROVAL OF THE BENTON COUNTY/DEPUTY COUNTY SURVEYOR. RW

**FIRM/AGENCY:** BENTON COUNTY SURVEYOR'S OFFICE  
**ADDRESS:** 360 S.W. AVERY AVE. CORVALLIS OR 97333; PH. 757-6821  
**SURVEYOR:** CURTIS J. LIESENFELT  
**SURVEY CREW:** MARK E. ANDERSON

REGISTERED PROFESSIONAL LAND SURVEYOR  
*Curtis J. Liesenfelt*  
OREGON  
JULY 17, 1986  
CURTIS J. LIESENFELT  
2213  
LICENSE RENEWAL 12/31/1996

**SEE CORNER HISTORY FORM FOR RECORDS ETC.**

**CORNER RESTORATION FIELD BOOK NUMBER 16 PAGE(S) 74 DATE 11/5/1997**  
**TOWNSHIP 11 SOUTH, RANGE 6 WEST, WILLAMETTE MERIDIAN; SECTION 23 CORNER SE**  
**DONATION LAND CLAIM \_\_\_\_\_ CORNER \_\_\_\_\_**  
**CONDITION REPORT \_\_\_\_\_; REFERENCED OUT \_\_\_\_\_; RENEWED XX; SURVEYED IN \_\_\_\_\_**

**LOCATION AND COMMENTS:**

THE MONUMENT IS LOCATED IN A MEADOW, ON A MODERATELY SLOPING, SOUTHEASTERLY FACING HILLSIDE, APPROXIMATELY 200 FEET EASTERLY FROM A GRAVEL LOGGING ROAD. THERE IS A NORTH-SOUTH AND EASTERLY GRAVEL ROAD INTERSECTION APPROXIMATELY 350 FEET SOUTH-SOUTHWESTERLY, DOWNHILL. TO REACH START AT THE DOUBLE GREEN GATES (WILLAMETTE INDUSTRIES) ON THE SOUTH SIDE OF HIDDEN VALLEY ROAD, APPROXIMATELY 0.1 MILES EASTERLY FROM BLAKESLEY CREEK ROAD, FOLLOW GRAVEL ROAD 1.2 MILES TO LEFT FORK (UPHILL), GO 0.05 MILES TO A RIGHT FORK (UPHILL), GO STRAIGHT FOR 1 MILE TO A WIDE SPOT IN SAID GRAVEL ROAD.

**MONUMENTS AND ACCESSORIES FOUND (CONDITION AND SOURCE):**

- FOUND: 5/8" REBAR WITH YELLOW PLASTIC CAP SET IN A PILE OF STONES, AS PER RECORD [08]. THIS POSITION WAS MONUMENTED WITH A STAKE, POLE AND PILE OF STONES AS PER RECORD [02], AND APPEARS TO HAVE BEEN DETERMINED VIA SOME TYPE OF EVIDENCE (NO RECORD WAS FOUND TO SUPPORT THIS). THIS POSITION DOES NOT APPEAR TO FIT ANY OF THE COMMON MATHEMATICAL SOLUTIONS WHICH COULD HAVE BEEN USED TO REESTABLISH A LOST CORNER. ITS RELATIONSHIP TO OTHER CORNERS AROUND IT (SEE COUNTY SURVEY NO. 9264) SUPPORT THIS DETERMINATION. BECAUSE OF THIS WE HAVE DETERMINED THE STATUS OF THIS CORNER TO BE OBLITERATED AND WE WILL ACCEPT THIS POSITION FOR THE CORNER.
- FOUND: FLAGPOLE ON TOP OF THE BENTON COUNTY COURT HOUSE, BEARS S 71° 21' 15" E AS PER RECORD [09] (S 71° 22' E AS PER RECORD [02]). THIS LINE IS THE BASIS OF BEARINGS FOR THIS RESTORATION.
- FOUND: U.S.G.S. STATION "BALD" BEARS (S 46° 15' 45" E AS PER RECORD [09]; S 46° 17' E AS PER RECORD [02]).
- FOUND: 3 1/4" BENTON COUNTY BRASS CAP AT THE SOUTH 1/4 CORNER OF SECTION 24 IN T 11 S, R 6 W AS PER CORNER RESTORATION NO. 4147, BEARS (N 89° 19' 56" E~2655.00 FEET AS PER RECORD [09]; N 89° 19' E~2653.99 FEET AS PER RECORD [03]).
- FOUND: 3 1/4" BENTON COUNTY BRASS CAP AT THE WEST 1/4 CORNER OF SECTION 25 IN T 11 S, R 6 W AS PER CORNER NO. 116600240, BEARS (S 0° 09' 26" W~2611.96 FEET AS PER RECORD [09]; S 0° 08' W~2615.25 FEET AS PER RECORD [03]).
- FOUND: SPIKE AND BRASS WASHER IN THE TOP CENTER OF A 16" EASTERLY TRUNK OF A TWIN D. FIR STUMP, BEARS S 75° 10' E 41.78 FEET (S 75° 08' E~41.81 FEET AS PER RECORD [09]).
- FOUND: SPIKE AND BRASS WASHER IN THE TOP CENTER OF A 25" D. FIR STUMP, BEARS S 42° 42' W~35.43 FEET (S 42° 40' W 35.48 FEET AS PER RECORD [09]).
- FOUND: AN ORANGE FIBERGLASS "SURVEY MARKER" POST 2 FEET SOUTH OF THE CORNER.

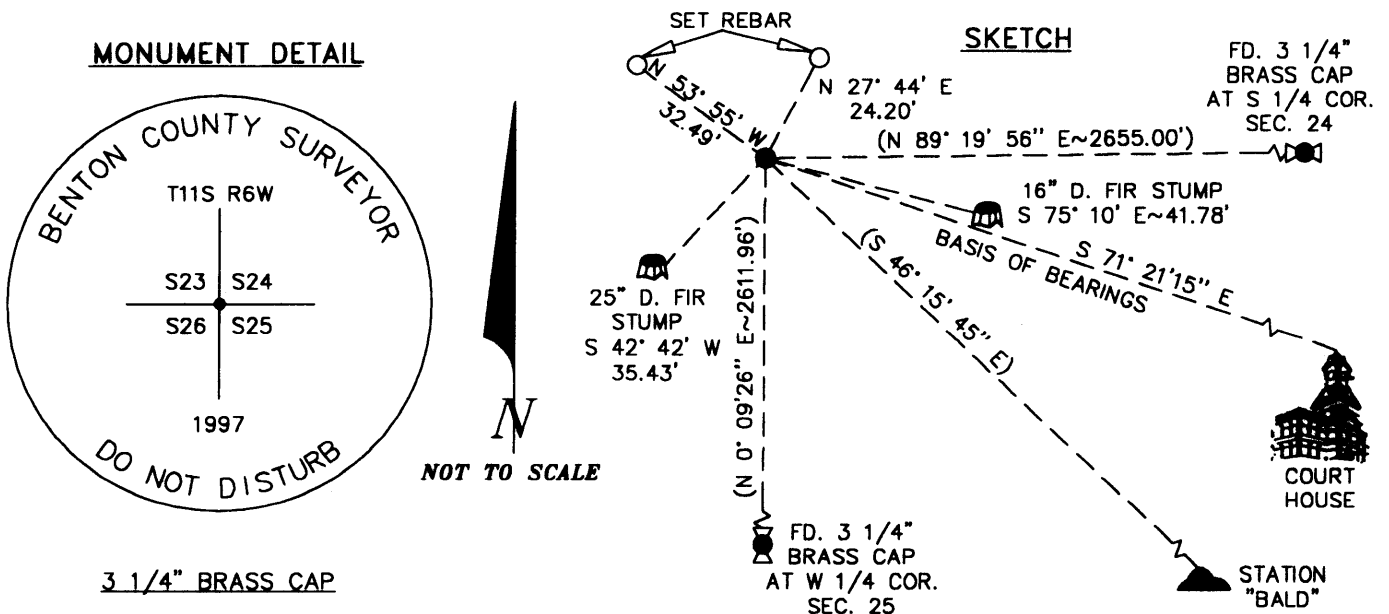
NO OTHER RECORD EVIDENCE WAS RECOVERED.

**MONUMENT SET (PROCEDURES AND DESCRIPTION):**

REFERENCED AND REMOVED THE REBAR AND CAP AND REPLACED WITH A 2" INSIDE DIAMETER X 36" LONG IRON PIPE WITH A 3 1/4" BENTON COUNTY BRASS CAP, STAMPED AS SHOWN. RESET THE REBAR AND CAP FOR THE NORTHEAST ACCESSORY (SEE BELOW). PILED STONES AROUND THE NEW MONUMENT. THE NEW MONUMENT IS APPROXIMATELY 0.15 FOOT HIGHER THAN THE OLD ONE.

**NEW ACCESSORIES:**

- SET: REBAR (SEE NOTES) 6" BELOW GROUND SURFACE, BEARS N 27° 44' E~24.20 FEET.
- SET: REBAR (SEE NOTES) 7" BELOW GROUND SURFACE, BEARS N 53° 55' W~32.49 FEET.



**NOTES:**

COMPASS DECLINATION IS 20° EAST. ALL MEASURED DISTANCES AND COMPASS BEARINGS ARE TO THE CENTER OF THE OBJECT, UNLESS OTHERWISE NOTED. ALL BEARING TREES ARE PAINTED AND HAVE A B.T. TAG ATTACHED, FACING THE CORNER UNLESS OTHERWISE NOTED. ALL SET REBAR ARE 5/8" X 30" AND HAVE A YELLOW PLASTIC CAP (STAMPED "BENTON COUNTY SURVEYOR") ATTACHED TO THE TOP.

THIS DOCUMENT WAS NAMED AND CREATED IN A MANNER SIMILAR TO THE HISTORY FORM. THE NAME OF THE BOILER PLATE IS "MONUMENT". THE BORDER, STAMP AND SKETCH ARE FROM AUTOCAD RELEASE 12.

THIS RESTORATION WAS PERFORMED AT THE DIRECTION AND APPROVAL OF THE BENTON COUNTY/DEPUTY COUNTY SURVEYOR. RW

**FIRM/AGENCY:** BENTON COUNTY SURVEYOR'S OFFICE  
**ADDRESS:** 360 S.W. AVERY AVE. CORVALLIS OR 97333; PH. 757-6821  
**SURVEYOR:** CURTIS J. LIESENFELT  
**SURVEY CREW:** CORY O'NEIL

REGISTERED  
PROFESSIONAL  
LAND SURVEYOR

*Curtis J. Liesenfelt*

OREGON  
JULY 17, 1986  
CURTIS J. LIESENFELT  
2213

LICENSE RENEWAL 12/31/1996

TOWNSHIP 11 SOUTH, RANGE 6 WEST, WILLAMETTE MERIDIAN; SECTION 23 CORNER SE  
DONATION LAND CLAIM \_\_\_\_\_ CORNER \_\_\_\_\_

**COMMON CORNER(S):**

- THE SOUTHWEST CORNER OF SECTION 24.
- THE NORTHWEST CORNER OF SECTION 25.
- THE NORTHEAST CORNER OF SECTION 26.

**CORNER RECORDS (PREVIOUS RENEWALS, SURVEYS, ETC.)**

- [01] ORIGINAL GLO SURVEY BY HARVEY GORDON AND JOSIAH PRESTON DATED FEBRUARY 28, 1855. SET POST, RAISED MONUMENT OF STONE.
- [02] COUNTY SURVEY NO. 846 BY WALTER W. LARSEN DATED FEBRUARY OF 1923 (FIELD BOOK NO. 32, PAGE 32). SET STAKE, POLE AND PILE OF STONES WITH 2 BEARING OBJECTS.
- [03] COUNTY SURVEY NO. 851 BY WALTER W. LARSEN DATED FEBRUARY OF 1923 (PAGES 16, 17 OF FIELD NOTES). NO MONUMENT DESCRIPTION, 3 BEARING OBJECTS.
- [04] OLD CORNER RESTORATION BOOK NO. 1 PAGE 167 BY WALTER W. LARSEN DATED FEBRUARY OF 1923. SAME INFORMATION AS RECORD [02].
- [05] CORNER RESTORATION NO. 876. THIS IS A TRANSCRIBED COPY OF RECORD [04] AND MAY CONTAIN ERRORS AND OMISSIONS.
- [06] MAP NO. 11-6-00011 BY BENTON COUNTY SURVEYOR'S OFFICE DATED MARCH OF 1923. PILE OF STONES WITH 2 BEARING OBJECTS.
- [07] MAP NO. 11-6-00011 BY BENTON COUNTY SURVEYOR'S OFFICE DATED 1948. OAK STAKE.
- [08] CORNER RESTORATION FIELD BOOK NO. 15, PAGE 66, DATED OCTOBER 18, 1994. FOUND LOW MOUND OF STONE, SET REBAR AND CAP IN CENTER.
- [09] CORNER RESTORATION NO. 116600300R2 BY CURTIS J. LIESENFELT, DATED JULY 6, 1995. FOUND REBAR AND CAP AND 4 BEARING OBJECTS, ESTABLISHED 2 NEW ACCESSORIES.
- [10] CORNER RESTORATION NO. 116600300R3 BY CURT LIESENFELT, DATED NOVEMBER 5, 1997. FOUND REBAR AND CAP WITH 4 ACCESSORIES, SET BRASS CAP WITH 2 NEW ACCESSORIES.
- [11] COUNTY SURVEY NO. 9264 BY TED LANGTON, ADTED NOVEMBER 19, 1996. FOUND BRASS CAP AND 2 ACCESSORIES.

**COMMENTS/LOCATION/ETC:**

**HORIZONTAL AND VERTICAL INFORMATION:**

**HORIZONTAL DATUM:** NAD 83 (91)  
**LATITUDE:** N 44° 35' 31.88090"  
**LONGITUDE:** W 123° 22' 26.10353"

**VERTICAL DATUM:** NGVD/29/47  
**ELLIPSOID ELEVATION:**  
**ORTHOMETRIC ELEVATION:** 1240.35' +/- 0.10-0.15  
**GEOD SEPARATION:**

**STATE PLANE COORDINATE SYSTEM:** OREGON NORTH  
**N (Y):** 350736.203 +/- 0.05-0.10  
**E (X):** 7453608.099 +/- 0.05-0.10

**SCALE FACTOR:** 0.99994487  
**COMBINED FACTOR:** 0.99988890  
**CONVERGENCE:** -2° 02' 17.3"

THIS POSITION WAS DETERMINED BY TIEING INTO A RANDOM G.P.S. CONTROL POINT (W.I.C.H.#1) WITH A SOLAR OBSERVATION FOR AZIMUTH (CORNER RESTORATION FIELD BOOK NO. 15, PAGE 66), AND E.D.M. DISTANCE. THE AZIMUTH AND DISTANCE WERE CONVERTED TO THE STATE PLANE GRID. FOR MORE INFORMATION ON THE G.P.S. OBSERVATIONS AND ADJUSTMENTS SEE PROJECT (W.I.C.H.) WILLAMETTE INDUSTRIES CARDWELL HILL IN THE G.P.S. PROJECT FILE DRAWER.

**NOTES:**

THIS IS A MICROSOFT WORD (VERSION 6.0) DOCUMENT NAMED "16600300" CREATED FROM A BOILER PLATE DOCUMENT NAMED "HISTORY", WHICH HAS A STYLESHEET NAMED "CORNER" ATTACHED TO IT.

**FIRM/AGENCY:** BENTON COUNTY SURVEYOR'S OFFICE  
**ADDRESS:** 360 S.W. AVERY AVE. CORVALLIS OR 97333; PH. 757-6821  
**RESEARCH BY:** CURTIS J. LIESENFELT  
**DATA ENTRY BY:** CURTIS J. LIESENFELT

REGISTERED  
PROFESSIONAL  
LAND SURVEYOR

*Curtis J. Liesenfelt*

OREGON  
JULY 17, 1986  
CURTIS J. LIESENFELT  
2213

LICENSE RENEWAL 12/31/1996