

CORNER FILE TRACKING

H:\Survey\Corners\Misc\Filetrac.doc

11/23/98

CORNER NUMBER
116640600

STEP	HISTORY()	RESTORATION()
Form Prepared, DB	1/28/04	6/21/04
Field Inspection, DB	6/15/04	6/15/04
Form Checked, DB	6/25/04	6/25/04
Form Edited, DB	6/29/04	6/29/04
Form Signed, DB	6/29/04	6/29/04
Authorize Payment, DB	—	—
Archive Digital Files	6/29/04	6/29/04
Collect Documents	6/29/04	6/29/04
Scanned	7/28/04	7/28/04
Copy For Filming	6/29/04	6/29/04
Filed, DB		
Finish index (count unit)	6/15/04	6/15/04
Filmed (Archived), DB		

(DB) = Entry needed in database (Access).

G I S I N D E X

6/29/04

6/29/04

COMMENTS:

DATE 01/28/2004TOWNSHIP 11 SOUTH, RANGE 06 WEST, WILLAMETTE MERIDIAN; SECTION 01 CORNER SOUTH 1/4
DONATION LAND CLAIM N/A CORNER NONE**COMMON CORNER(S):**

NORTH 1/4 SECTION 12

RECORDS (INFORMATION IN *BOLD ITALICS* IS COUNTY STAFFS' INTERPRETATION OF THE RECORD)

BASED ON EXTENSIVE RESEARCH AND RECOVERY OF EVIDENCE, THIS OFFICE HAS DETERMINED THAT MOST GENERAL LAND OFFICE SURVEYORS MEASURED TO THE FACE OF BEARING TREES.

- [01] GENERAL LAND OFFICE (GLO) NOTES BY JOSIAH PRESTON, D.S. AND HARVEY GORDON, D.S., DATED AUGUST 4, 1854. **SET POST. MARKED A 4" MAPLE *S58°W*, 12 LKS. (7.92 FEET) AND A 5" R. FIR *N18°W*, 22 LKS. (14.52 FEET).**
- [02] COUNTY SURVEY NO. 1133 (OLD NO. 339) FIELD NOTES (FIELDBOOK 54, PAGE 16) BY W. W. LARSEN, D.C.S., NO DATE GIVEN. **CORNER FOUND BUT NOT DESCRIBED. FOUND A DEAD 6" MAPLE (GLO BT) *S58°W*, 0.12 CHS. (7.92 FEET) AND A 16" FIR (GLO BT) *N18°W*, 0.22 CHS. (14.52 FEET).**
- [03] CORNER RESTORATION BOOK NO.1, PAGE 195 BY W. W. LARSEN, D.C.S., DATED 1931. **FOUND STAKE ON ORIGINAL CORNER. FOUND A DEAD 6" MAPLE (GLO BT) *S58°W*, 0.12 CHS. (7.92 FEET) AND A 16" FIR (GLO BT) *N18°W*, 0.22 CHS. (14.52 FEET).**
- [04] CORNER RESTORATION NO. 839. **TRANSCRIBED FROM RECORD [03] AND MAY CONTAIN ERRORS AND/OR OMISSIONS.**
- [05] COUNTY SUVEY NO.1266 (OLD NO. 339) FIELD NOTES (FIELDBOOK NO. 55, PAGE 19) BY W. C. GALLOWAY, C.S., DATED FEBRUARY 15, 1936. **SET A 3/4"x20" GALV. PIPE. FOUND A DEAD 6" MAPLE (GLO BT) STUMP 2' HIGH *S58°W*, 0.12 CHS. (7.92 FEET) AND A 16" FIR (GLO BT) *N18°W*, 0.22 CHS. (14.52 FEET). MARKED A 13" MAPLE *S53°W*, 0.15 CHS. (9.90 FEET) TO CENTER, BOTTOM OF FACE 2' UP.**
- [06] CORNER RESTORATION BOOK NO. 1, PAGE 195 BY W. C. GALLOWAY, C.S., DATED FEBRUARY 15, 1936. **SET A 3/4"x20" GALV. PIPE. FOUND A DEAD 6" MAPLE (GLO BT) STUMP 2' HIGH *S58°W*, 0.12 CHS. (7.92 FEET) AND A 16" FIR (GLO BT) *N18°W*, 0.22 CHS. (14.52 FEET). MARKED AN 11" MAPLE *S53°W*, 0.15 CHS. (9.90 FEET) TO CENTERLINE, BOTTOM OF FACE 2' UP.**
- [07] CORNER RESTORATION NO. 839. **TRANSCRIBED FROM RECORD [06] AND MAY CONTAIN ERRORS AND/OR OMISSIONS.**
- [08] BENTON COUNTY MAP NO. 11-6-00001 PLATTED BY W. C. GALLOWAY, C.S., DATED FEBRUARY 20, 1936. **3/4"x20" GALV. PIPE. 6" MAPLE STUB (GLO BT) STANDING *S58°W*, 0.12 CHS. (7.92 FEET). 16" FIR (GLO BT) STANDING *N18°W*, 0.22 CHS. (14.52 FEET). 13" MAPLE *S53°W*, 0.15 CHS. (9.90 FEET) TO CENTER AT BOTTOM OF FACE 2' UP.**
- [09] COUNTY SURVEY NO. 8862 BY JIM PETERSON, P.L.S., DATED JULY 28, 1994. **FOUND 3/4" IRON PIPE. FOUND 16" MAPLE (CS BT) *S62°W*, 9.6 FEET. MARKED A 24" WHITE FIR *N11°E*, 58.1 FEET.**

COMMENTS/LOCATION/ETC:**NOTES:**

THIS IS A MICROSOFT WORD 2000 DOCUMENT NAMED "16640600" CREATED FROM A BOILER PLATE DOCUMENT NAMED "HISTORY", WHICH HAS A STYLESHEET NAMED "CORNER" ATTACHED TO IT.

FIRM/AGENCY: BENTON COUNTY SURVEYOR'S OFFICE
ADDRESS: 360 S.W. AVERY AVE. CORVALLIS OR 97333; PH. 766-6821
RESEARCH BY: BERNARD S. ALTENBACH, ENGINEER/SURVEY TECH.
DATA ENTRY BY: BSA

BENTON COUNTY CORNER RESTORATION FORM, PAGE 1 OF 2, 116640600R2
SEE CORNER HISTORY FORM FOR RECORDS ETC.

CORNER RESTORATION FIELD BOOK NUMBER 22 PAGE(S) 21 DATE 06/15/2004
TOWNSHIP 11 SOUTH, RANGE 6 WEST, WILLAMETTE MERIDIAN; SECTION 1 CORNER S 1/4
DONATION LAND CLAIM NONE CORNER N/A
CONDITION REPORT _____; REFERENCED OUT _____; RENEWED XX; SURVEYED IN _____

LOCATION AND COMMENTS:

CORNER IS LOCATED IN A HARDWOOD AND CONIFER FOREST ON A GENTLE WESTERLY FACING SLOPE. TO REACH CORNER FROM THE JUNCTION OF CARDWELL HILL ROAD AND BLAKESLEY CREEK ROAD, TRAVEL EASTERLY ON BLAKESLEY CREEK ROAD FOR 1.73 MILES TO 3 WAY JUNCTION AND LOCKED GATE; THEN BEAR EASTERLY ON THE LEFT MOST SPUR FOR 1.71 MILES TO Y JUNCTION; THEN BEAR RIGHT FOR 0.65 MILES TO Y JUNCTION; THEN BEAR LEFT (PASSING THROUGH LOCKED GATE AT 0.03 MILES) FOR 0.56 MILES TO LOCATION TAG ON A 14" D. FIR ON THE WESTERLY SIDE OF ROAD; THEN WEST 405 FEET TO CORNER. CORNER IS POOR FOR PREMARKING AND GPS CONTROL.

MONUMENTS AND ACCESSORIES FOUND (CONDITION AND SOURCE):

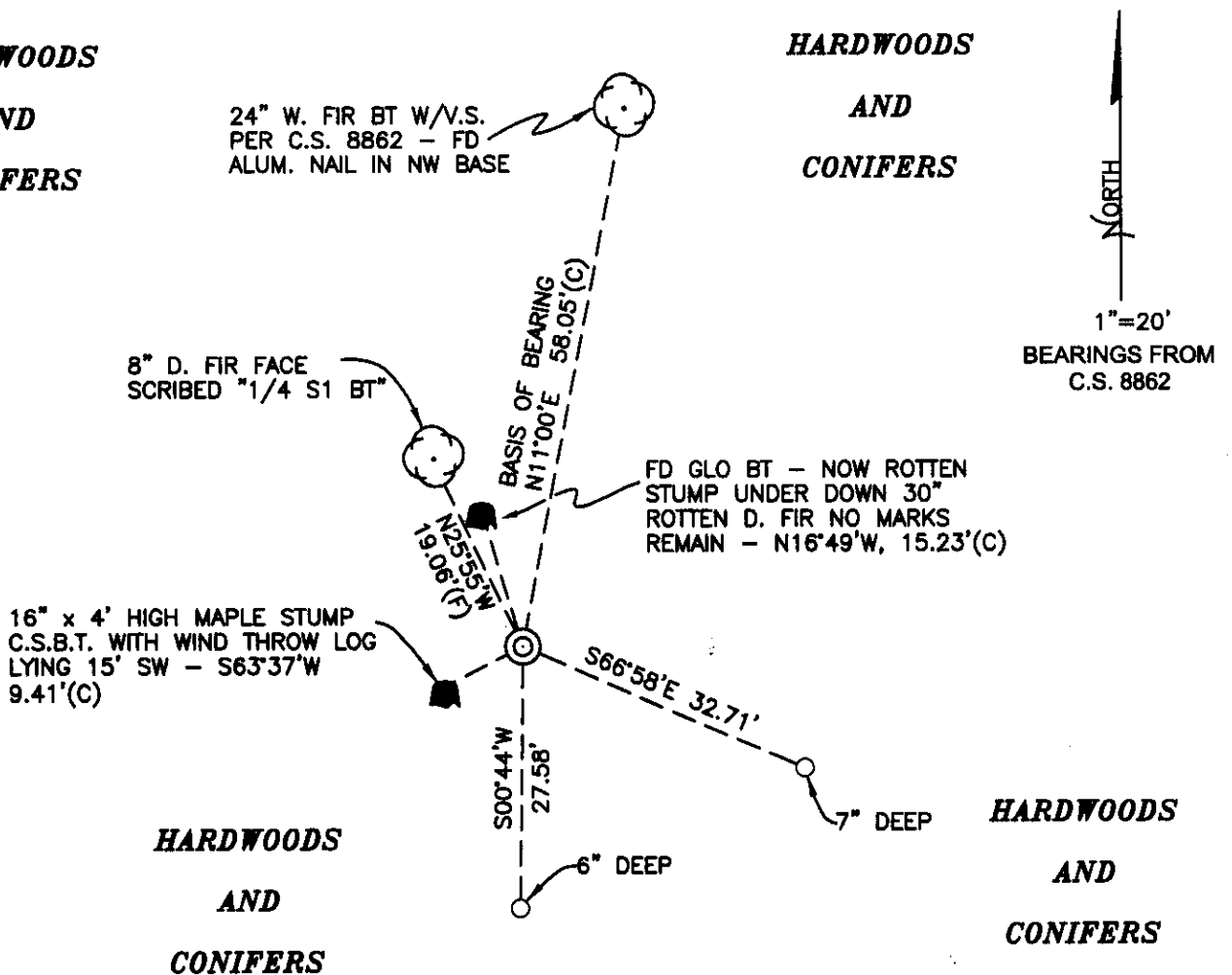
1. FOUND 3/4" IRON PIPE FLUSH WITH GROUND LEVEL FOR CORNER POSITION.
(SET 3/4" X 20" GALVANIZED PIPE PER RECORDS [05] AND [06]).
(3/4" X 20" GALVANIZED PIPE PER RECORD [08])
3/4" IRON PIPE PER RECORD [09]).
2. FOUND 16" X 4' HIGH MAPLE SNAG, COUNTY SURVEYOR'S BEARING TREE, S63°37'W, 9.41 FEET TO CENTER. WINDTHROW MAPLE LOG WITH ROTTEN FACE LYING 15 FEET SOUTHWESTERLY.
(MARKED 13" MAPLE S53°W, 9.90 FEET PER RECORDS [05], [06] AND [08]).
(FOUND 16" MAPLE, S62°W, 9.6 FEET PER RECORD [09]).
3. FOUND ROTTEN REMAINS OF D. FIR STUMP WITH NO VISIBLE MARKS REMAINING, N16°49'W, 15.2 FEET TO CENTER.
(5" RED FIR, N18°W, 14.52 FEET PER RECORD [01]).
(FOUND 16" FIR, N18°W, 14.52 FEET PER RECORDS [02] - [06] AND [08]).
4. FOUND 24" W. FIR WITH VISIBLE SCRIBING, N11°00'E, 58.05 FEET TO CENTER. FOUND ALUMINUM NAIL IN NORTHWEST BASE FOR DISTANCE MEASUREMENT.
(24" W. FIR, N11°E, 58.1 FEET MARKED "1/4 S1 BT" PER RECORD [09]).

MONUMENT SET (PROCEDURES AND DESCRIPTION):

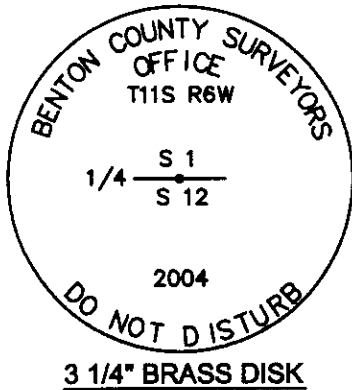
HELD THE 3/4" IRON PIPE AS SET PER RECORD [05] FOR TRUE CORNER POSITION. SET 2" X 31 1/2" GALVANIZED IRON PIPE WITH A 3 1/4" BRASS DISK CONCRETED IN THE TOP, 3" ABOVE GROUND LEVEL, OVER 3/4" IRON PIPE AND MARKED AS SHOWN ON PAGE 2 OF 2. SET 6 FOOT ORANGE CARSONITE "SURVEY MARKER" POST 0.5 FEET WEST OF NEW MONUMENT.

**HARDWOODS
AND
CONIFERS**

**HARDWOODS
AND
CONIFERS**



MONUMENT DETAIL



LEGEND

- SET 5/8" X 30" REBAR WITH YELLOW PLASTIC CAP MKD "BENTON COUNTY SURVEYOR"
- (F) MEASUREMENT TO FACE
- (C) MEASUREMENT TO CENTER
- ⊙ GOVERNMENT MONUMENT SET AS SHOWN
- ⊙ GOVERNMENT MONUMENT FOUND AS SHOWN
- ⊙ BEARING TREE AS NOTED
- C.S.B.T. COUNTY SURVEYORS BEARING TREE
- GLO GENERAL LAND OFFICE
- STUMP OF BEARING TREE AS NOTED

NEW ACCESSORIES:

1. SET REBAR (SEE LEGEND) 6" BELOW GROUND LEVEL, S0°44'W, 27.58 FEET.
2. SET REBAR (SEE LEGEND) 7" BELOW GROUND LEVEL, S66°58'E, 32.71 FEET.
3. FACE SCRIBED 8" D. FIR, "1/4 S1 BT", N25°55'W, 19.06 FEET TO FACE. SET ALUMINUM NAIL AND PLASTIC WASHER BELOW SCRIBING FOR DISTANCE AND ANGLE MEASUREMENT.

NOTES:

COMPASS DECLINATION IS 20° EAST. ALL MEASURED DISTANCES AND BEARINGS ARE TO THE CENTER OF THE OBJECT, UNLESS OTHERWISE NOTED. ALL BEARING TREES ARE PAINTED AND HAVE A B.T. TAG ATTACHED, FACING THE CORNER UNLESS OTHERWISE NOTED. ALL NEW BEARING TREES HAVE A PLASTIC WASHER (STAMPED "BENTON COUNTY SURVEYOR CORNER RESTORATION") ATTACHED (BY ALUMINUM NAIL) TO THE FACE, BELOW THE "BT" FOR DISTANCE AND ANGLE MEASUREMENT UNLESS OTHERWISE NOTED. THE DRAWING IS FROM AUTOCAD RELEASE 2002.

THIS RESTORATION WAS PERFORMED AT THE DIRECTION AND APROVAL OF THE BENTON COUNTY SURVEYOR, RM

FIRM/AGENCY: BENTON COUNTY SURVEYOR'S OFFICE
 ADDRESS: 360 S.W. AVERY AVE. CORVALLIS OR 97333; PH. 766-6821
 PRESENT: DAVID M. DEAN, P.L.S., BERNIE ALTENBACH AND ADAM COSALEGNO, SURVEY TECHNICIANS

REGISTERED
PROFESSIONAL
LAND SURVEYOR

6/29/04 *David M. Dean*

OREGON
JULY 13, 1984
DAVID M. DEAN
2090

RENEWAL DATE: 12/31/05

S.W. corner of sec 12 in T.10S. R.7 W. W.M.
 Set Stone 6"x6"x14" at orig corner
 Face of 48" stump bears N E 20° E .15 chains
 " " 60" snag " S 12° E .395 "

N.W. corner of sec 12 T.11S R.6W. W.M.
 set a 1/2" spot, 1/2" stake at SW side
 Set 4 1/4" iron stake on point of land on E. bank of creek
 Maple 15" in dia. bears N.60°W. .85 chains. old.
 " 10" " " 5.80° E .28 down and out.
 Mkd. " 18" " " N 29° E .62 Standings Down, 6 ft. stub.
 " 12" " " S. 58° E .540 Bearing from lines.

1/4 section corner on west line of section 12 T.11S. R.6W.
 set 2" Ford truck axle in place of stake.
 Set 4 x 4 x 36 dogwood stake
 Fir 8" 24" in dia. bears N. 83° E. 19 ^{chs.} standing
 " 12" 30" " " N. 73° W. 21 chains ± 5 ft.

1/4 Section corner on north line of sec. 12 - T.11 S. R.6W
 set a 7/8" x 20" galv. pipe
 Stake on orig. corner.
 Fir 16" in dia. bears N. 18° W 0.22 chains standing
 Maple 6" " " S. 58° W. .12 " dead.
 Mkd. " 11" " " S. 53° W .150 " ± bottom or face 2' up.

N.E. Corner of Jacob Slagle Ch. 62 in T.13S. R.5W.
 Set 2" pipe for corner from which a Reset in hole 1953
 1" pipe bears West .50 chains ✓ Ash 6" S. 80° E. 0.070 } Blase - no serial
 Dble " 8" S. 20° W 0.128 }

S.E. corner of Jacob Slagle Ch. 62 T.13S R.5W

Sept 16, 1929
 Walter W. Larsen
 Jacob Aare
 Jerry Aare

1931
 Walter W. Larsen
 Rex Clemens
 Ballard

M.C.G. Feb 15, 1936
 "



1931
 Walter W. Larsen
 Grover Avery
 Julian McFadden

11-6 1

$\frac{1}{4}$ -Section corner on north line of section 12, Twp. 11 S., R. 6 W.

839

Reestablishment by W. C. Galloway

1931

Stake on original corner

Fir 16" in diam bears N 18° W

0.22 chains

Maple 6" in diam bears S 58° W

.12 chains (dead)

Maple 11" in diam bears S 53° W

.150 chains

By W. C. Galloway

February 15, 1936

Set a $\frac{3}{4}$ " x 20" galvanized pipe

116640600

REMONUMENTING 1/4 1/2 T115 R6W

Fd 3/4" I.P. FLUSH w/GROUND LEVEL

FOR COR. POSITION AS SET FROM ORIG.

EVIDENCE PER CS 1266 (RECORD [E5])

NO EVIDENCE OF GLO MAPLE REMAINS

Fd ROOT CROWN & BARK RING OF GLO

FIR. Fd 16" MAPLE CSBT - NOW DN

& ROTTEN. w/HEALED BLAZE. Fd " W.

FIR BT W V.S. PER C.S. 8862 (RECORD

[09]). HELD 3/4" I.P. FOR TRUE COR.

SET 2" X 3 1/2" G.I.P. w/3/4" BRASS DISK

CONC IN TOP 3" ↑ MKD AS SHOWN

OVER 3/4" I.P.

SET 6' ORANGE CARBONITE "SURVEY

MARKER" POST 0° WEST. REFERENCED

AS SHOWN.

LOCATION TAG ON 14" D.F.I.R. ON SLY SIDE

Rock Rd. WEST 405'

T115 R6W

1/4 1/2
S1
S2

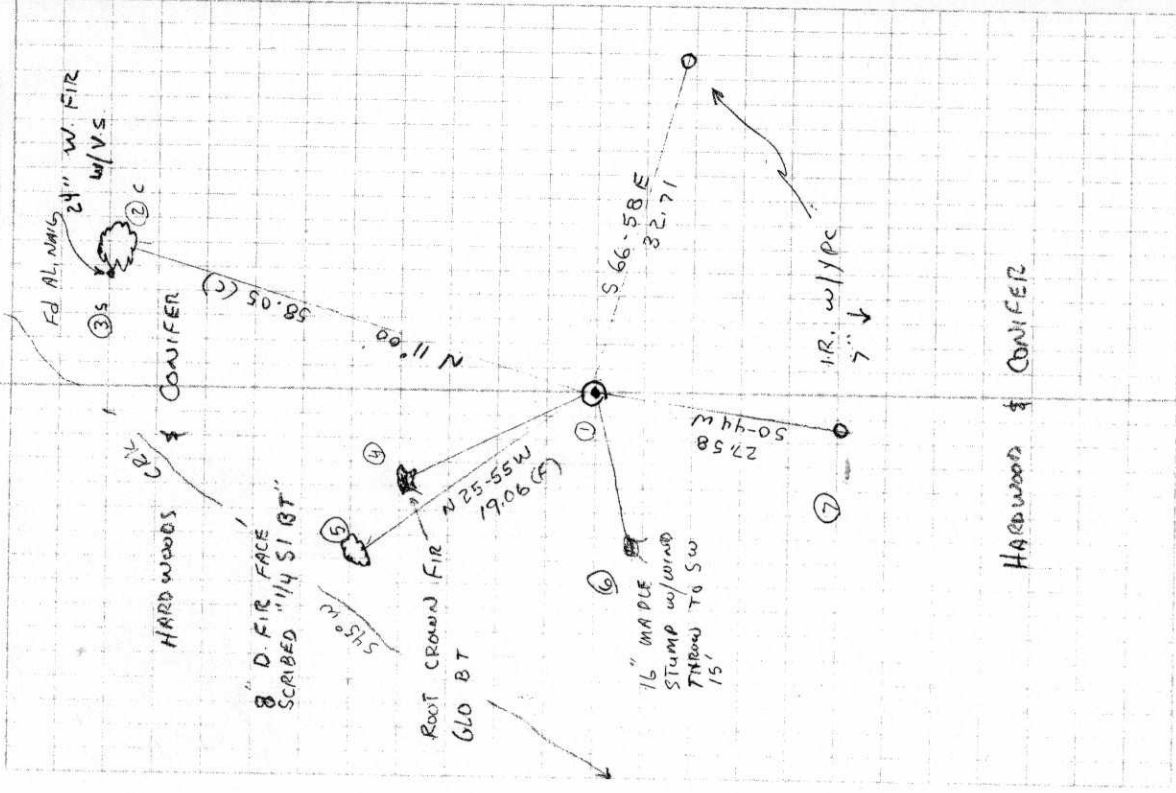
2004

3/4" BRASS DISK

CLEAR, WARM
70°F AM 28.9° AF
LEGA FOR 1105/705

6/15/04
D. DEAN
B. ALTENBACH
A. COSALEGNO

22/21



HARDWOODS & CONIFER