

## CORNER FILE TRACKING

H:\Survey\Corners\Misc\Filetrac2.doc  
06/15/2003

<b>CORNER NUMBER</b>
<b>116839040</b>

STEP	HISTORY()	RESTORATION()
Form Prepared, DB	4/09/07	4/25/07
Field Inspection, DB	4/24/07	4/24/07
Form Checked, DB	5/1/07	5/1/07
Form Edited, DB	5/2/07	5/2/07
Form Signed, DB	5/7/07	5/7/07
Counter Index	4/25/07	4/25/07
GIS Index	4/25/07	4/25/07
Authorize Payment, DB	—	—
Archive Digital Files	5/10/07	5/10/07
Collect Documents	N/A	N/A
Scanned	5/29/07	5/29/07
Copy For Filming	5/10/07	5/10/07
Filed, DB		
Finish index (count unit)	4/24/07	4/24/07
Filmed (Archived), DB		
Document No's to Andrew		

(DB) = Entry needed in database (Access).

### COMMENTS:

DATE 04/09/2007TOWNSHIP 11 SOUTH, RANGE 06 WEST, WILLAMETTE MERIDIAN; SECTION 05 CORNER N/A  
DONATION LAND CLAIM WASHINGTON PATTERSON NO. 39 CORNER SOUTH-SOUTHEAST**COMMON CORNER(S):**

ANGLE POINT ON WEST LINE OF REUBEN F BURGETT D L C NO 57

**RECORDS (INFORMATION IN BOLD ITALICS IS COUNTY STAFFS' INTERPRETATION OF THE RECORD)****BASED ON EXTENSIVE RESEARCH AND RECOVERY OF EVIDENCE, THIS OFFICE HAS DETERMINED THAT MOST GENERAL LAND OFFICE SURVEYORS MEASURED TO THE FACE OF BEARING TREES.**

- [01] GENERAL LAND OFFICE (GLO) NOTES OF THE WASHINGTON PATTERSON DLC NO 39 BY DENNIS HATHORN, D S , DATED DECEMBER 9, 1854 **SET A POST. MARKED A 15" W. OAK S7°E 71 LKS. (46.86 FT.) AND A 36" W. OAK N60°W 130 LKS. (85.80 FT.)**.
- [02] GLO NOTES OF THE REUBEN BURGETT DLC NO 57 BY DENNIS HATHORN, D S , DATED MARCH 24, 1855 **CORNER OF CLAIM 39 AT ANGLE IN LINE OF CLAIM 57.**

**NOTES:**

THIS IS A MICROSOFT WORD 2000 DOCUMENT NAMED "16839040" CREATED FROM A BOILER PLATE DOCUMENT NAMED "HISTORY", WHICH HAS A STYLESHEET NAMED "CORNER" ATTACHED TO IT

**FIRM/AGENCY:** BENTON COUNTY SURVEYOR'S OFFICE  
**ADDRESS:** 360 S W AVERY AVE CORVALLIS OR 97333, PH 766-6821  
**RESEARCH BY:** BERNARD S ALTENBACH, ENGINEER/SURVEY TECH.  
**DATA ENTRY BY:** SAME

**BENTON COUNTY CORNER RESTORATION FORM, PAGE 1 OF 2, 116839040R1**

**SEE CORNER HISTORY FORM FOR RECORDS ETC.**

CORNER RESTORATION FIELD BOOK NUMBER 25 PAGE(S) 24 DATE 04/24/2007  
TOWNSHIP 11 SOUTH, RANGE 6 WEST, WILLAMETTE MERIDIAN; SECTION 05 CORNER NONE  
DONATION LAND CLAIM WASHINGTON PATTERSON NO. 39 CORNER SOUTH-SOUTHWEST  
CONDITION REPORT \_\_\_\_; REFERENCED OUT \_\_\_\_; RENEWED XX; SURVEYED IN \_\_\_\_

**LOCATION AND COMMENTS:**

CORNER IS LOCATED ON A GENTLE SOUTHWEST FACING SLOPE IN A ±20 YEAR OLD D FIR PLANTATION TO REACH CORNER FROM THE JUNCTION OF BURGETT ROAD AND ALEXANDER ROAD, TRAVEL NORTHERLY ON ALEXANDER ROAD FOR 0.45 MILES TO THE NORTHWEST INTERIOR CORNER OF THE WASHINGTON PATTERSON DLC NO 39, THEN WALK SOUTHERLY ON SKID ROAD FOR APPROXIMATELY 16 1/2 CHAINS TO LOCATION TAG ON 4" D FIR AT THE WEST SIDE OF SKID ROAD, THEN N80°W, 40 FEET TO CORNER. CORNER IS POOR FOR PREMARKING AND GPS CONTROL.

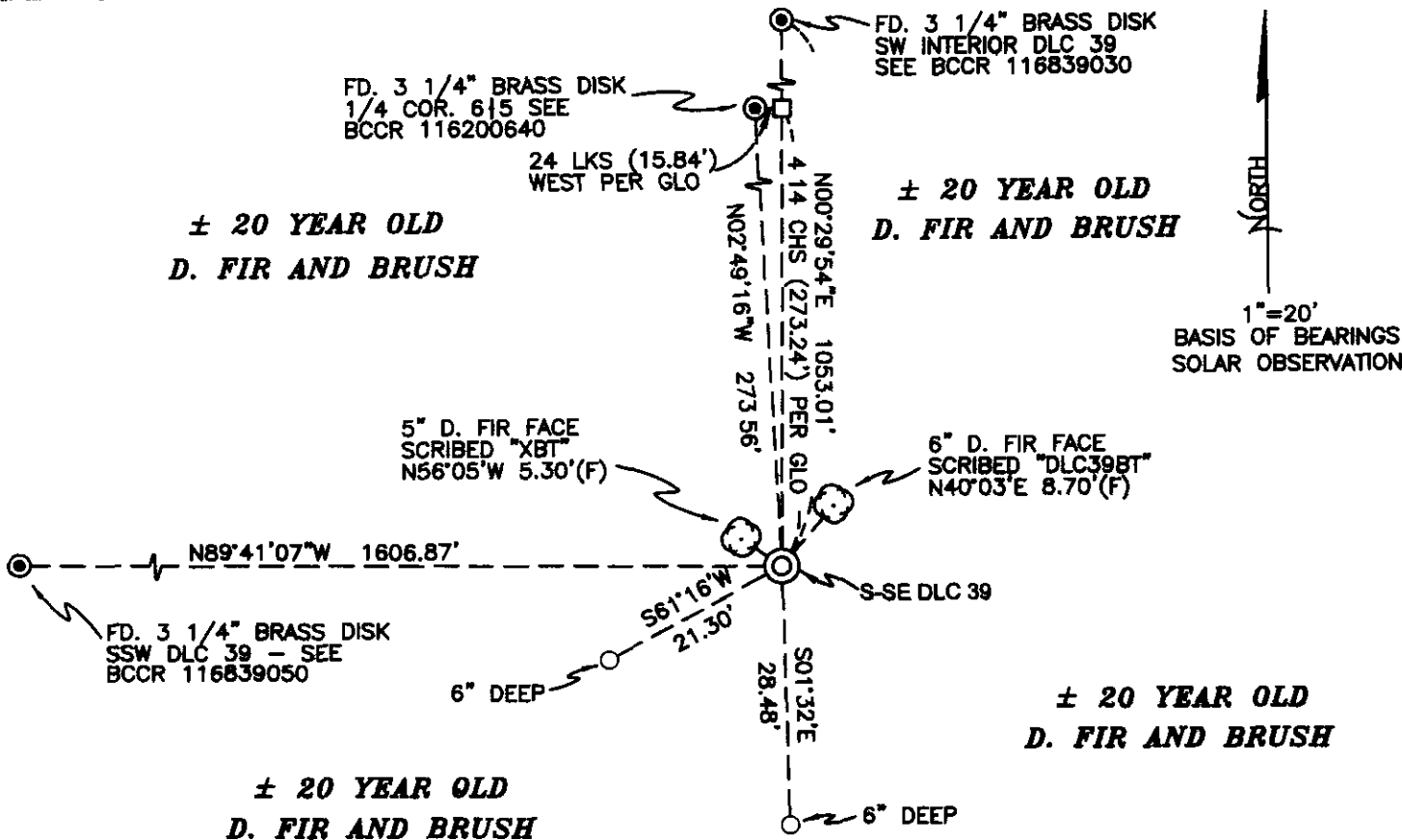
**MONUMENTS AND ACCESSORIES FOUND (CONDITION AND SOURCE):**

- 1 FOUND 3 1/4" BRASS DISK AT THE 1/4 CORNER COMMON TO SECTIONS 5 AND 6, N2°49'16"W 273.56 FEET SEE BENTON COUNTY CORNER RESTORATION NO 116200640 (N3°19'04"W, 273.70 FEET [CALCULATED] PER RECORDS [01] AND [02])
- 2 FOUND 3 1/4" BRASS DISK AT THE SW INTERIOR CORNER OF DLC NO 39, N0°29'54"E, 1053.01 FEET SEE BENTON COUNTY CORNER RESTORATION NO 116839030 (NORTH, 1056.00 FEET PER RECORDS [01] AND [02])
- 3 FOUND 3 1/4" BRASS DISK AT THE SOUTH-SOUTHWEST CORNER OF DLC NO 39, N89°41'07"W, 1606.87 FEET SEE BENTON COUNTY CORNER RESTORATION NO 116839050 (WEST, 1623.6 FEET PER RECORD [01])

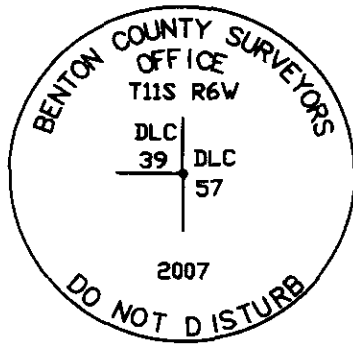
**MONUMENT SET (PROCEDURES AND DESCRIPTION):**

CORNER WAS DETERMINED TO BE LOST. POSITION OF CORNER WAS CALCULATED BY HOLDING THE SW INTERIOR OF DLC NO 39 AND A POINT 24 LINKS (15.84 FEET) EAST OF THE 1/4 CORNER COMMON TO SECTIONS 5 AND 6 FOR LINE PER GLO RECORD THEN EXTENDING THIS ESTABLISHED LINE SOUTHERLY FOR 4.14 CHAINS (273.24 FEET) PER GLO RECORD TO A CALCULATED POSITION.

AT SAID CALCULATED POSITION, SET A 2" X 3 1/2" GALVANIZED IRON PIPE WITH A 3 1/4" BRASS DISK CONCRETED IN THE TOP, FLUSH WITH GROUND LEVEL AND MARKED AS SHOWN ON PAGE 2 OF 2. SET A 6 FOOT ORANGE CARSONITE "SURVEY MARKER" POST 0.5 FEET NORTH OF NEW MONUMENT.



**MONUMENT DETAIL**



**3 1/4" BRASS DISK**

**LEGEND**

- SET 5/8" X 30" REBAR WITH YELLOW PLASTIC CAP MKD "BENTON COUNTY SURVEYOR"
- (F) MEASUREMENT TO FACE
- ⊙ GOVERNMENT MONUMENT SET AS SHOWN
- ⊙ GOVERNMENT MONUMENT FOUND AS SHOWN
- BEARING TREE AS NOTED
- ⊠ BCCR BENTON COUNTY CORNER RESTORATION CALCULATED POINT NOTHING SET

**NEW ACCESSORIES:**

- 1 SET REBAR (SEE LEGEND) 6" BELOW GROUND LEVEL S01°32'E, 28.48 FEET.
2. SET REBAR (SEE LEGEND) 6" BELOW GROUND LEVEL S61°16'W, 21.30 FEET.
3. 6" D. FIR FACE SCRIBED "DLC39BT" N40°03'E, 8.70 FEET TO FACE. SET ALUMINUM NAIL AND PLASTIC WASHER AT THE BOTTOM OF THE FACE FOR DISTANCE AND ANGLE MEASUREMENT.
- 4 5" D. FIR FACE SCRIBED "XBT" N56°05'W, 5.30 FEET TO FACE. SET ALUMINUM NAIL AND PLASTIC WASHER AT THE BOTTOM OF THE FACE FOR DISTANCE AND ANGLE MEASUREMENT.

**NOTES:**

COMPASS DECLINATION IS 20° EAST. ALL MEASURED DISTANCES AND BEARINGS ARE TO THE CENTER OF THE OBJECT, UNLESS OTHERWISE NOTED. ALL BEARING TREES ARE PAINTED AND HAVE A B.T. TAG ATTACHED, FACING THE CORNER UNLESS OTHERWISE NOTED. ALL NEW BEARING TREES HAVE A PLASTIC WASHER (STAMPED "BENTON COUNTY SURVEYOR CORNER RESTORATION") ATTACHED (BY ALUMINUM NAIL) TO THE FACE, BELOW THE "BT" FOR DISTANCE AND ANGLE MEASUREMENT UNLESS OTHERWISE NOTED. THE DRAWING IS FROM AUTOCAD RELEASE 2006.

THIS RESTORATION WAS PERFORMED AT THE DIRECTION AND APROVAL OF THE BENTON COUNTY SURVEYOR, David M. Dean

FIRM/AGENCY BENTON COUNTY SURVEYOR'S OFFICE  
 ADDRESS. 360 S.W. AVERY AVE. CORVALLIS OR 97333; PH. 766-6821  
 PRESENT: DAVID M. DEAN, P.L.S. AND BERNIE ALTENBACH, SURVEY TECH.  
 EQUIPMENT. LEICA TCR 1105 WITH TDS SOFTWARE ON BOARD

REGISTERED  
 PROFESSIONAL  
 LAND SURVEYOR

5/7/07 *David M. Dean*

OREGON  
 JULY 13, 1984  
 DAVID M. DEAN  
 2090

RENEWAL DATE: 12/31/07

116839040

REMANUMENTING S-SE W. PRATERSON DLC 39

T115 R6W

NO HISTORY BEYOND GLO. NO EVIDENCE OF GLO MONUMENT OR B.T'S. COR SET AT CALC. POSITION. ~ HELD POINT

24 LKS EAST OF 1/4 6/5 11-6 AS

POINT ON CLAIM LINE PER GLO. HELD

BNG FM INT SW 39 TAREU POINT 24 LKS

E OF 1/4 COR AND RECORD DIST OF

4.14 CHS (273.24 FT) TO CALC COR.

AT CALC. POSITION SET 2" 3/16" G.I.P

W/3/4" BRASS DISK CONC. IN TOP, FLUSH

W/GROUND AND MKD AS SHOWN.

SET 6' ORANGE CARBONITE "SURVEY

MARKER" POST ON NORTH

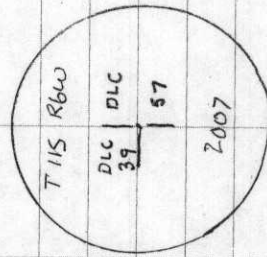
COR ON GENTLE SW SLOPE

POOR GPS & PREMARKING.

N 83.39 W 63° 48.81

LOC. TAG 4" FIR ON W SIDE SKID RD. N 80 W 40"

48-49-54 54) AS SET S-SE 39



3 1/4" BRASS DISK

CADY, MILD

55°F, 30.0" Hg

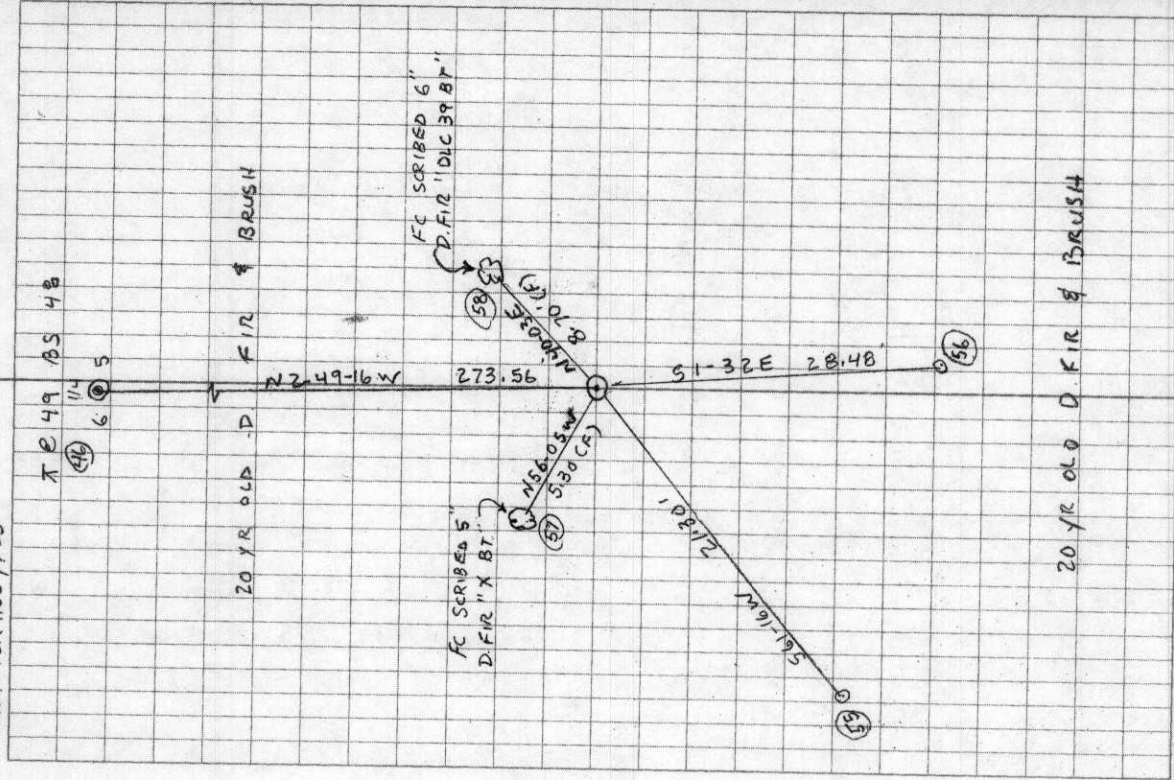
LEICA TCR 1105 / TDS

4/24/07

D DEAN

B. ALTENBACH

25/24



20 YR OLD D. FIR & BRUSH