

## CORNER FILE TRACKING

H:\Survey\Corners\Misc\Filetrac.doc

11/23/98

<b>CORNER NUMBER</b>
<b>116859030</b>

STEP	HISTORY()	RESTORATION()
✓ Form Prepared, DB	3/29/04	4/7/04
✓ Field Inspection, DB	4/1/04	4/1/04
✓ Form Checked, DB	4/27/04	4/27/04
✓ Form Edited, DB	4/30/04	4/30/04
✓ Form Signed, DB	4/30/04	4/30/04
✓ Authorize Payment, DB	—	—
Archive Digital Files	4/30/04	4/30/04
✓ Collect Documents	4/30/04	4/30/04
Scanned	5/7/04	5/7/04
Copy For Filming		
Filed, DB		
✓ Finish index (count unit)	4/1/04	4/1/04
Filmed (Archived), DB		

(DB) = Entry needed in database (Access).

### COMMENTS:

DATE 03/29/2004

TOWNSHIP 11 SOUTH, RANGE 06 WEST, WILLAMETTE MERIDIAN; SECTION 09 CORNER NONE  
DONATION LAND CLAIM H. S. HALLOCK NO. 59 CORNER SOUTHEAST

**COMMON CORNER(S):**

NONE

**RECORDS (INFORMATION IN *BOLD ITALICS* IS COUNTY STAFFS' INTERPRETATION OF THE RECORD)**

BASED ON EXTENSIVE RESEARCH AND RECOVERY OF EVIDENCE, THIS OFFICE HAS DETERMINED THAT MOST GENERAL LAND OFFICE SURVEYORS MEASURED TO THE FACE OF BEARING TREES.

[01] GENERAL LAND OFFICE (GLO) NOTES OF THE H. S. HALLOCK DONATION LAND CLAIM (DLC) NO. 59 BY DENNIS HATHORN, D.S., DATED MARCH 24, 1856. *SET POST. MARKED A 20" OAK S50°E 311 LKS. (205.26 FEET) AND A 12" OAK S9°W 357 LKS. (235.62 FEET).*

[02] BENTON COUNTY CORNER RESTORATION FORM BY DAVID SWANSON, P.L.S., DATED JUNE 1997. *FOUND 12" OAK STUMP. FACE BUT NO SCRIBING, S9°00'W, 235.6 FEET; FOUND 20" OAK STUMP WITH AX MARKS AND CHAINING NOTCH, S50°00'E, 205.3 FEET. SET 5/8" X 30" IRON ROD WITH YELLOW PLASTIC CAP MARKED "LS 1103" BY DISTANCE-DISTANCE INTERSECTION.*

**NOTES:**

THIS IS A MICROSOFT WORD 2000 DOCUMENT NAMED "16859030" CREATED FROM A BOILER PLATE DOCUMENT NAMED "HISTORY", WHICH HAS A STYLESHEET NAMED "CORNER" ATTACHED TO IT.

**FIRM/AGENCY:** BENTON COUNTY SURVEYOR'S OFFICE  
**ADDRESS:** 360 S.W. AVERY AVE. CORVALLIS OR 97333; PH. 766-6821  
**RESEARCH BY:** DAVID M. DEAN, P.L.S.,  
**DATA ENTRY BY:** DEAN

**BENTON COUNTY CORNER RESTORATION FORM, PAGE 1 OF 2, 116859030R1**

**SEE CORNER HISTORY FORM FOR RECORDS ETC.**

CORNER RESTORATION FIELD BOOK NUMBER 22 PAGE(S) 14 DATE 04/01/2004  
TOWNSHIP 11 SOUTH, RANGE 6 WEST, WILLAMETTE MERIDIAN; SECTION 9 CORNER NONE  
DONATION LAND CLAIM H. S. HALLOCK NO. 59 CORNER SOUTHEAST  
CONDITION REPORT \_\_\_\_; REFERENCED OUT \_\_\_\_; RENEWED XX; SURVEYED IN \_\_\_\_

**LOCATION AND COMMENTS:**

CORNER IS LOCATED ON A GENTLE WEST FACING SLOPE IN A  $\pm 5$  YEAR OLD CLEAR CUT AREA. TO REACH CORNER FROM THE JUNCTION OF HIGHWAY 223 (KINGS VALLEY HIGHWAY) AND MAHOGANY LANE, TRAVEL NORTHERLY ON HIGHWAY 223 FOR 0.67 MILES; THEN RIGHT (EAST) THROUGH LOCKED GATE ON PRIVATE GRAVEL ROAD, TRAVELING EASTERLY, NORTHERLY AND EASTERLY AGAIN FOR 1.20 MILES TO JUNCTION; THEN BEAR RIGHT FOR 0.08 MILES TO JUNCTION WITH SKID ROAD ON RIGHT; THEN SOUTH 60 FEET TO CORNER. CORNER IS GOOD FOR PERMARKING AND GPS CONTROL.

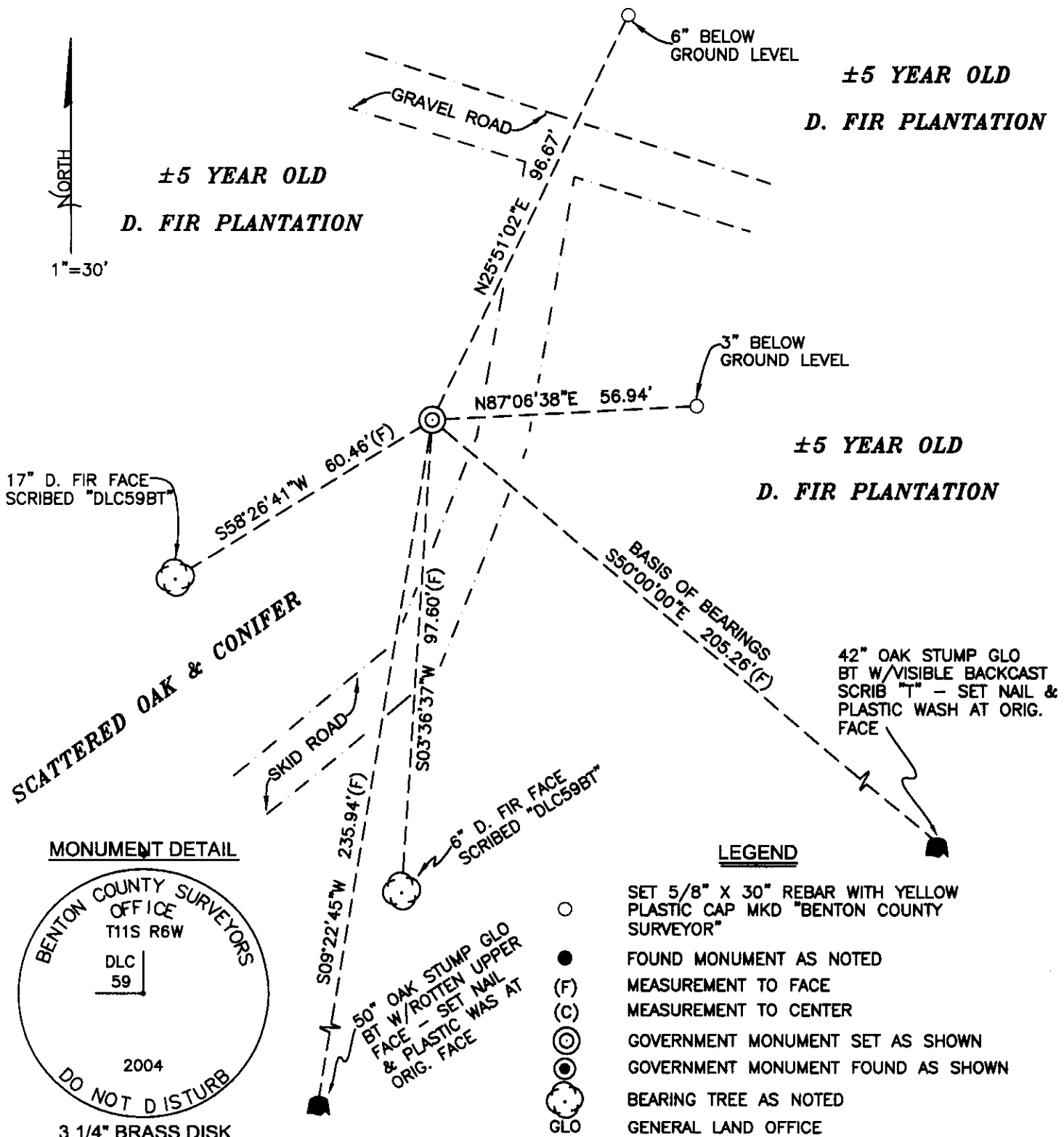
**MONUMENTS AND ACCESSORIES FOUND (CONDITION AND SOURCE):**

1. FOUND 5/8" X 30" IRON ROD WITH YELLOW PLASTIC CAP MARKED "LS 1103" WITH THE TOP 6" BENT 0.4 FEET WESTERLY. HELD STRAIGHT PORTION OF ROD FOR CORNER POSITION.  
(SET 5/8" X 30" IRON ROD WITH YELLOW PLASTIC CAP MARKED "LS 1103" BY DISTANCE-DISTANCE INTERSECTION FROM BOTH GLO BEARING TREES PER RECORD [02]).
2. FOUND 42" OAK STUMP WITH VISIBLE BACKCAST SCRIBING "t", S50°00'00"E, 205.26 FEET. SET NAIL AND PLASTIC WASHER AT ORIGINAL FACE FOR DISTANCE AND ANGLE MEASUREMENT. **BASIS OF BEARINGS FOR THIS RESTORATION.**  
(20" OAK, S50°E, 205.26 FEET PER RECORDS [01] AND [02]).
3. FOUND 50" OAK STUMP WITH ROTTEN UPPER FACE AND NO VISIBLE MARKS REMAINING, S9°22'45"W, 235.94 FEET. SET NAIL AND PLASTIC WASHER AT ORIGINAL FACE FOR DISTANCE AND ANGLE MEASUREMENT.  
(12" OAK, S9°W, 235.62 FEET PER RECORDS [01] AND [02]).

**MONUMENT SET (PROCEDURES AND DESCRIPTION):**

A DISTANCE/DISTANCE INTERSECTION BASED ON TIES TO THE 2 GLO BEARING TREES (STUMPS) AT ORIGINAL FACE POSITIONS, BEARS S39°37'W. 0.38 FEET FROM THE IRON ROD SET FOR CORNER POSITION PER RECORD [02]. WE HAVE HELD THE SAID IRON ROD SET PER RECORD [02] FOR THE TRUE CORNER, BASED ON A GOOD FAITH EFFORT TO RESTORE THE SUBJECT CORNER.

REMOVED THE 5/8" IRON ROD AND SET A 2" X 31 1/2" GALVANIZED IRON PIPE WITH A 3 1/4" BRASS DISK CONCRETED IN THE TOP, 1" ABOVE GROUND LEVEL AND MARKED AS SHOWN ON PAGE 2 OF 2. REMOVED THE 5/8" IRON ROD PER RECORD [02] FROM THE AREA. SET 6 ORANGE CARSONITE "SURVEY MARKER" POST 1 FOOT NORTH OF NEW MONUMENT.



**MONUMENT DETAIL**



**LEGEND**

- SET 5/8" X 30" REBAR WITH YELLOW PLASTIC CAP MKD "BENTON COUNTY SURVEYOR"
- FOUND MONUMENT AS NOTED
- (F) MEASUREMENT TO FACE
- (C) MEASUREMENT TO CENTER
- ⊙ GOVERNMENT MONUMENT SET AS SHOWN
- ⊙ GOVERNMENT MONUMENT FOUND AS SHOWN
- ⊙ BEARING TREE AS NOTED
- GLO GENERAL LAND OFFICE

**NEW ACCESSORIES:**

1. SET REBAR (SEE LEGEND) 4" BELOW GROUND LEVEL, N25°51'02"E, 96.67 FEET.
2. SET REBAR (SEE LEGEND) 3" BELOW GROUND LEVEL, N87°06.38"E, 56.94 FEET.
3. FACE SCRIBED 6" D. FIR, S3°36'37"W, 97.60 FEET TO FACE (98.0 FEET TO CENTER). SET ALUMINUM NAIL AND PLASTIC WASHER IN BLAZE BELOW SCRIBS FOR DISTANCE AND ANGLE MEASUREMENT.
4. FACE SCRIBED 17" D. FIR, S58°26'41"W, 60.46 FEET TO FACE (61.3 FEET TO CENTER). SET ALUMINUM NAIL AND PLASTIC WASHER IN BLAZE BELOW SCRIBS FOR DISTANCE AND ANGLE MEASUREMENT.

**NOTES:**

COMPASS DECLINATION IS 20° EAST. ALL MEASURED DISTANCES AND BEARINGS ARE TO THE CENTER OF THE OBJECT, UNLESS OTHERWISE NOTED. ALL BEARING TREES ARE PAINTED AND HAVE A B.T. TAG ATTACHED, FACING THE CORNER UNLESS OTHERWISE NOTED. ALL NEW BEARING TREES HAVE A PLASTIC WASHER (STAMPED "BENTON COUNTY SURVEYOR CORNER RESTORATION") ATTACHED (BY ALUMINUM NAIL) TO THE FACE, BELOW THE "BT" FOR DISTANCE AND ANGLE MEASUREMENT UNLESS OTHERWISE NOTED. THE DRAWING IS FROM AUTOCAD RELEASE 2002.

THIS RESTORATION WAS PERFORMED AT THE DIRECTION AND APPROVAL OF THE BENTON COUNTY SURVEYOR. *[Signature]*

REGISTERED PROFESSIONAL LAND SURVEYOR

4/30/04 *David M. Dean*

OREGON  
JULY 13, 1984  
DAVID M. DEAN  
2090

FIRM/AGENCY: BENTON COUNTY SURVEYOR'S OFFICE  
ADDRESS: 360 S.W. AVERY AVE. CORVALLIS OR 97333; PH. 766-6821  
PRESENT: DAVID M. DEAN, P.L.S., AND BERNIE ALTENBACH, SURVEY TECH.

RENEWAL DATE: 12/31/05

116859030

REMONUMENTING SE HS. HALLOCK DLG #59

T115 R6W

Fd 5/8" I.R. w/YPC "LS 1103" w/TOP

6" BENT W'LY - USED SPIN HOLE

Fd 42" OAK STAMP GLO BT w/VISIBLE

BACKCAST SCRIBING "T" SET NAIL &amp;

PLASTIC WASH IN TOP OF STAMP AT FACE

DIST. Fd 50" OAK STAMP GLO BT w/LOWER

PART OF UPPER FACE ROTTEN OFF .SET

AL NAIL &amp; PLASTIC WASH IN FACE

I.R. SET BY LS. 1103 BY DIST/DIST INTERSECTION

FM GLO STAMPS. OUR DIST/DIST WOULD BE

0.3' W'LY. HELD LS. 1103 I.R. FOR

TRUE CORNER. REMOVED I.R. AND SET

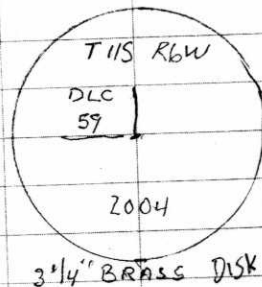
2" x 3 1/2" G.I.P. w/3 1/4" BRASS DISK CONCRETED

IN TOP 1" ABOVE GR. LEVEL MKD AS

SHOWN. REMOVED 5/8" I.R. FROM AREA

SET 6" ORANGE CARSONITE "SURVEY MARKER"

POST 1 FT NORTH OF NEW MON.

CLEAR, MILD  
61°F 29.7° H<sub>g</sub>  
LEICA TCR 1105/TDS4/1/04 22/14  
D. DEAN  
B. ALTENBACH  
J. PETERSON  
B. PETERSONLAT 44-37-53  
LONG 123-24-51

A2

128-10-08 = 551-49-52 E  
128-10-18