

CORNER FILE TRACKING

H:\Survey\Corners\Misc\Filetrac2.doc

06/15/2003

CORNER NUMBER

116870020

STEP	HISTORY()	RESTORATION()
Form Prepared, DB	8/15/03	11/1/06
Field Inspection, DB	10/20/06	10/20/06
Form Checked, DB	11/6/06	11/6/06
Form Edited, DB	11/7/06	11/7/06
Form Signed, DB	11/7/06	11/7/06
Counter Index	11/6/06	11/7/06
GIS Index	11/7/06	11/7/06
Authorize Payment, DB	—	—
Archive Digital Files		
Collect Documents	11/7/06	11/7/06
Scanned	11/7/06	11/7/06
Copy For Filming	11/7/06	11/7/06
Filed, DB		
Finish index (count unit)	10/20/06	10/20/06
Filmed (Archived), DB		

(DB) = Entry needed in database (Access).

COMMENTS:

DATE 8/15/2003TOWNSHIP 11 SOUTH, RANGE 6 WEST, WILLAMETTE MERIDIAN; SECTION 30 CORNER N/A
DONATION LAND CLAIM HEIRS OF STEPHEN KING DLC 70 CORNER SECOMMON CORNER(S):

NONE

RECORDS (INFORMATION IN BOLD ITALICS IS COUNTY STAFFS' INTERPRETATION OF THE RECORD)

BASED ON EXTENSIVE RESEARCH AND RECOVERY OF EVIDENCE, THIS OFFICE HAS DETERMINED THAT MOST GENERAL LAND OFFICE SURVEYORS MEASURED TO THE FACE OF BEARING TREES

[01] ORIGINAL GENERAL LAND OFFICE (GLO) SURVEY BY L DAVIS, D S , DATED JUNE 18, 1857 *SET POST FOR SE CORNER TO CLAIM 70 FROM WHICH A FIR 13" IN DIA. BEARS N87°30'W 363LKS (239.58 FEET).*[02] COUNTY SURVEY NO 7013 MAP BY ARNOLD BRUBAKER, R L S , DATED FEBUARY 2, 1979 *FOUND 60" D-FIR STUMP BELIEVED TO BE ORIGINAL (30" D-FIR N87°30'W 239.58 FEET). SET 5/8" ROD FROM STUMP WHICH WAS ONLY ONE LARGE ENOUGH WITHIN 150 FEET RADIUS. NEW BT'S: 16" D-FIR N16°W 69.3 FEET "DLC 70 BT". 14" GRAND FIR N63°W 29.45 FEET "DLC 70 BT".*COMMENTS/LOCATION/ETC:NOTES:

THIS IS A MICROSOFT WORD 2000 DOCUMENT NAMED "16870020" CREATED FROM A BOILER PLATE DOCUMENT NAMED "HISTORY", WHICH HAS A STYLESHEET NAMED "CORNER" ATTACHED TO IT

FIRM/AGENCY: BENTON COUNTY SURVEYOR'S OFFICEADDRESS: 360 S W AVERY AVE CORVALLIS OR 97333, PH 766-6821RESEARCH BY: DAVID M DEAN, P L SDATA ENTRY BY: SCOTT BOND, SURVEY TECH

BENTON COUNTY CORNER RESTORATION FORM, PAGE 1 OF 2, 116870020R1
SEE CORNER HISTORY FORM FOR RECORDS ETC.

CORNER RESTORATION FIELD BOOK NUMBER 24 PAGE(S) 61 DATE 10/20/2006
TOWNSHIP 11 SOUTH, RANGE 6 WEST, WILLAMETTE MERIDIAN; SECTION 30 CORNER NONE
DONATION LAND CLAIM HEIRS OF STEVEN KING NO. 70 CORNER SOUTHEAST
CONDITION REPORT ; REFERENCED OUT ; RENEWED XX, SURVEYED IN

LOCATION AND COMMENTS:

CORNER IS LOCATED IN THE SOUTHEAST CORNER OF A ±10 YEAR OLD D FIR PLANTATION ON A GENTLE NORTHERLY FACING SLOPE TO REACH CORNER FROM HARRIS COVERED BRIDGE OVER MARYS RIVER, TRAVEL SOUTH ON HARRIS ROAD (COUNTY ROAD NO 16520) FOR 0 10 MILES, THEN RIGHT ON PRIVATE GRAVEL ROAD FOR 0 05 MILES, THEN BEAR RIGHT (STAYING ON MAIN GRAVEL ROAD) FOR 0 33 MILES, THEN RIGHT ON GRAVEL SUPR ROAD FOR 0 13 MILES TO END OF ROAD, THEN EASTERLY FOR APPROXIMATELY 100 FEET TO CORNER CORNER IS POOR FOR PREMARKING AND GPS CONTROL

MONUMENTS AND ACCESSORIES FOUND (CONDITION AND SOURCE):

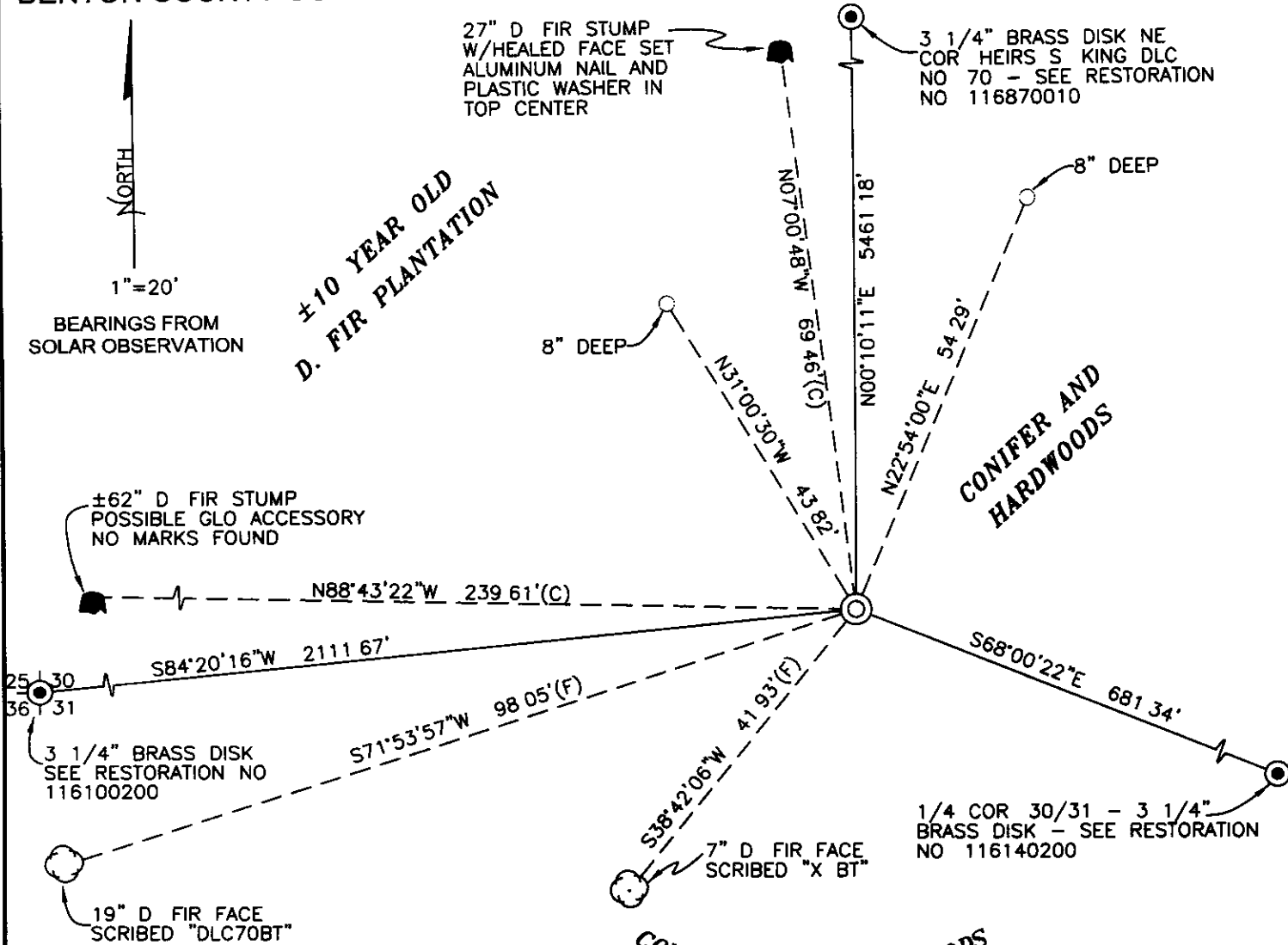
- 1 FOUND 5/8" IRON ROD, 2" ABOVE GROUND LEVEL FOR CORNER POSITION
(SET 5/8" ROD FROM STUMP (BELIEVED TO BE ORIGINAL) WHICH WAS ONLY ONE LARGE ENOUGH WITHIN 150 FOOT RADIUS PER RECORD [02])
- 2 FOUND ±62" D FIR STUMP, N88°43'22"W, 239 61 FEET TO CENTER STUMP IS A POSSIBLE ORIGINAL GLO ACCESSORY WE OPENED STUMP BUT FOUND NO SCRIBING
(A FIR, 30" DIAMETER BEARS N87°30'W, 239 58 FEET PER RECORD [01])
(FOUND 60" D FIR STUMP BELIEVED TO BE ORIGINAL 30" FIR, N87°30'W, 239 58 FEET PER RECORD [02])
- 3 FOUND 27" D FIR STUMP WITH HEALED BLAZE, N07°00'48"W, 69 46 FEET TO CENTER SET ALUMINUM NAIL AND PLASTIC WASHER IN TOP CENTER OF STUMP FOR DISTANCE AND ANGLE MEASUREMENT
(16" D FIR, N16°W, 69 3 FEET, MARKED "DLC70 BT" PER RECORD [02])
- 4 FOUND 3 1/4" BRASS DISK AT THE 1/4 CORNER COMMON TO SECTIONS 30 AND 31, S68°00'22"E, 681 34 FEET SEE RESTORATION NO 116140200
- 5 FOUND 3 1/4" BRASS DISK AT THE NORTHEAST CORNER OF THE HEIRS OF STEPHEN KING DLC NO 70, N00°10'11"E, 5461.18 FEET SEE RESTORATION NO 116870010
(NORTH, 5280 FEET PER RECORD [01])
- 6 FOUND 3 1/4" BRASS DISK AT SOUTHWEST CORNER OF SECTION 30, S84°20'16"W, 2111 67 FEET SEE RESTORATION NO 116100200

MONUMENT SET (PROCEDURES AND DESCRIPTION):

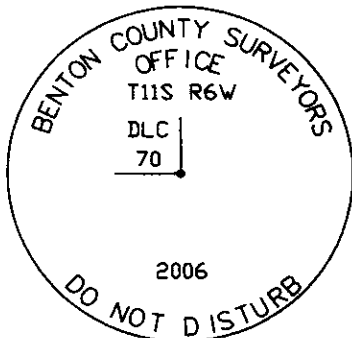
AS NOTED ABOVE, WE COULD FIND NO SCRIBING IN THE 62" D FIR STUMP IT IS POSSIBLE THAT L A DAVIS, D S BARK SCRIBED SOME OF HIS ACCESSORIES AS NOTED IN COUNTY SURVEY NO 608 AT THE NORTHEAST CORNER OF DLC NO 70 WE MADE A VERY THOROUGH SEARCH FOR THE LONE GLO ACCESSORY (30" FIR), BASED ON TIES TO THE MARYS RIVER ON BOTH THE EAST AND WEST LINE OF THE KING CLAIM, GLO PASSING CALL TO THE SOUTHWEST CORNER OF SECTION 30, TOPOGRAPHIC CALLS ON THE SOUTH LINE OF SAID CLAIM (STEEP SLOPE INTO MARYS RIVER) AND A WIDE RANDOM SEARCH, ALL WITHOUT SUCCESS

WE HAVE DETERMINED TO HOLD THE 5/8" IRON ROD SET IN COUNTY SURVEY NO 7013 FOR THE POSITION OF THE SUBJECT CORNER BASE ON 1) FAILURE TO FINE ANY EVIDENCE OF THE GLO MONUMENT OR ACCESSORY 2) WE CAN NOT POSITIVELY SAY THE STUMP USED IN COUNTY SURVEY NO 7013 WAS NOT AN ORIGINAL GLO ACCESSORY 3) THE PASSING CALL TO THE SOUTHWEST CORNER OF SECTION 30 COMPARES WELL WITH GLO RECORD IN REGARDS TO DISTANCE, AND 4) THE TOPOGRAPHIC CALL BY GLO ON THE SOUTH LINE OF CLAIM (STEEP SLOPE INTO MARYS RIVER) ALSO COMPARES WELL, AS BEST WE COULD DETERMINE FOR ADDITIONAL GRAPHIC AND NARRATIVE INFORMATION SEE COUNTY SURVEY NO 10145

WE LOWERED THE 5/8" IRON ROD TO A POINT 6" BELOW GROUND LEVEL SET A 2" X 31 1/2" GALVANIZED IRON PIPE OVER THE 5/8" IRON ROD WITH A 3 1/4" BRASS DISK CONCRETED IN THE TOP, 2" ABOVE GROUND LEVEL AND MARKED AS SHOWN ON PAGE 2 OF 2 SET 6 FOOT ORANGE CARSONITE "SURVEY MARKER" POST 0 5 FEET NORTH OF NEW MONUMENT



MONUMENT DETAIL



3 1/4" BRASS DISK

LEGEND

- SET 5/8" X 30" REBAR WITH YELLOW PLASTIC CAP MKD "BENTON COUNTY SURVEYOR"
- (F) MEASUREMENT TO FACE
- (C) MEASUREMENT TO CENTER
- ⊙ GOVERNMENT MONUMENT SET AS SHOWN
- GOVERNMENT MONUMENT FOUND AS SHOWN
- ⊙ BEARING TREE AS NOTED
- C S B T COUNTY SURVEYORS BEARING TREE
- GLO GENERAL LAND OFFICE
- STUMP OF BEARING TREE AS NOTED

NEW ACCESSORIES

- 1 SET REBAR (SEE LEGEND) N22°54'00"E, 54.29 FEET AND 8" BELOW GROUND LEVEL
- 2 SET REBAR (SEE LEGEND) N31°00'30"W, 43.82 FEET AND 8" BELOW GROUND LEVEL
- 3 FACE SCRIBED 19" D FIR, S71°53'57"W, 98.05 FEET TO FACE (99.0' TO CENTER) SET ALUMINUM NAIL AND PLASTIC WASHER IN BOTTOM OF BLAZE BELOW SCRIBING FOR DISTANCE AND ANGLE MEASUREMENT
- 4 FACE SCRIBED 7" D FIR, S38°42'06"W, 41.93 FEET TO FACE (42.3' TO CENTER) SET ALUMINUM NAIL AND PLASTIC WASHER IN BOTTOM OF BLAZE BELOW SCRIBING FOR DISTANCE AND ANGLE MEASUREMENT

NOTES

COMPASS DECLINATION IS 20° EAST ALL MEASURED DISTANCES AND BEARINGS ARE TO THE CENTER OF THE OBJECT, UNLESS OTHERWISE NOTED ALL BEARING TREES ARE PAINTED AND HAVE A BT TAG ATTACHED, FACING THE CORNER UNLESS OTHERWISE NOTED ALL NEW BEARING TREES HAVE A PLASTIC WASHER (STAMPED "BENTON COUNTY SURVEYOR CORNER RESTORATION") ATTACHED (BY ALUMINUM NAIL) TO THE FACE, BELOW THE "BT" FOR DISTANCE AND ANGLE MEASUREMENT UNLESS OTHERWISE NOTED THE DRAWING IS FROM AUTOCAD RELEASE 2006

THIS RESTORATION WAS PERFORMED AT THE DIRECTION AND APPROVAL OF THE BENTON COUNTY SURVEYOR, David M. Dean

FIRM/AGENCY BENTON COUNTY SURVEYOR'S OFFICE
 ADDRESS 360 SW AVERY AVE CORVALLIS OR 97333, PH 766-6821
 PRESENT DAVID M DEAN, PLS AND BERNIE ALTENBACH, SURVEY TECH
 EQUIPMENT LEICA TCR 1105 TOTAL STATION W/TDS ONBOARD

11/7/06

REGISTERED
 PROFESSIONAL
 LAND SURVEYOR

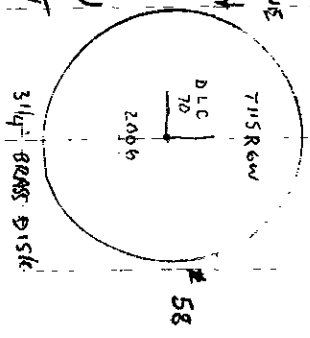
David M. Dean
 OREGON
 JULY 13, 1984
 DAVID M DEAN
 2090

RENEWAL DATE 12/31/07

116870 D20

RECONSTRUCTING SE HERS S KING'S DLE 70
T115 R6W

rd 5/8 IR PER CS 7013 AS SET FROM
 POSSIBLE GLO ACCESSORY AS "ONLY ONE LARGE
 ENOUGH IN 150' RANGE" WE PREPARED STUMP
 BUT FOUND NO MARKS, CHC OTHER SEARCH
 AREAS FROM GLO PASSING CALL TO J SET 30,
~~TOP~~ GLO TOPO CALLS TO N RIVER & STEEP
 BLUFF ON S LINE OF DLE 70 PLUS WIDE
 RANDOM SEARCH, NO EVIDENCE WAS FOUND
 OF GLO BT (30' FIR), C.S. 608 IN RECEIVED
 OF ME FOR DLE 70 MADE NOTATION OF
 "MARKED IN BARK" FOR 60' FIR (35' FIR PER
 GLO). HELD 5/8 IR PER CS 7013 FOR CAR POSITION
 PASSEY AND COULD NOT SAY STUMP RECOVERED IN
 CS 7013 WMS NOT THE ORIGINAL GLO BT, DIST
 TO PASSING CALL TO A SEC 30 MATCHES WELL
 AS DOES TOPO CALL TO "STEEP SLOPE" AND
 IN RIVER" ON S LINE
 Lowered 5/8 IR TO 6"
 SET 2" X 3 1/2" GIP
 DETER w/ 3 1/4" B.D.
 2" ↑ W/ 1/2" AS SIDELINE
 SET 6' ONSOURCE POST
 0.5" ↓



(SEE MAP) 6.5° E, 29.9° N
 LEVIA TOR 1105/TDS

12/20/06
 D DEAN
 J MARRIS
 B AUFENBACH

24/61

